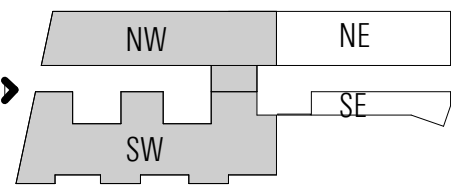




Notes:

1. Refer to floor plans for overall building dimensions.
2. Refer to sections for overall building height.
3. The exterior elevations, including door and window sizes and locations, the interior partition locations, the number, size, and locations of residential units, outdoor space, stairs, balcony and elevators are preliminary and shown for illustrative purposes only. The parking space layout is shown for illustrative purposes only. The final layouts may vary.
4. Retail storefronts, signage, and retail mezzanines are for illustrative purposes only and are subject to tenant modification. Applicant requests the flexibility to vary the final selection of the exterior materials within the color ranges and material types (maintaining the same general level of quality) proposed, based on availability at the time of construction and further project design.

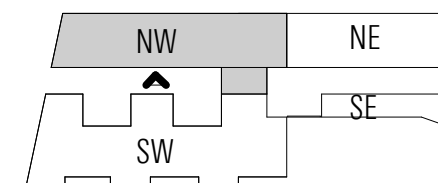


## ECKINGTON PLACE STREET ELEVATION



Notes:

1. Refer to floor plans for overall building dimensions.
2. Refer to sections for overall building height.
3. The exterior elevations, including door and window sizes and locations, the interior partition locations, the number, size, and locations of residential units, outdoor space, stairs, balcony and elevators are preliminary and shown for illustrative purposes only. The parking space layout is shown for illustrative purposes only. The final layouts may vary.
4. Retail storefronts, signage, and retail mezzanines are for illustrative purposes only and are subject to tenant modification. Applicant requests the flexibility to vary the final selection of the exterior materials within the color ranges and material types (maintaining the same general level of quality) proposed, based on availability at the time of construction and further project design.



NW | SOUTH ELEVATION

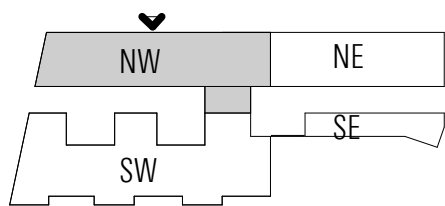
PRE-HEARING SUBMISSION | A3.02

04/22/2016

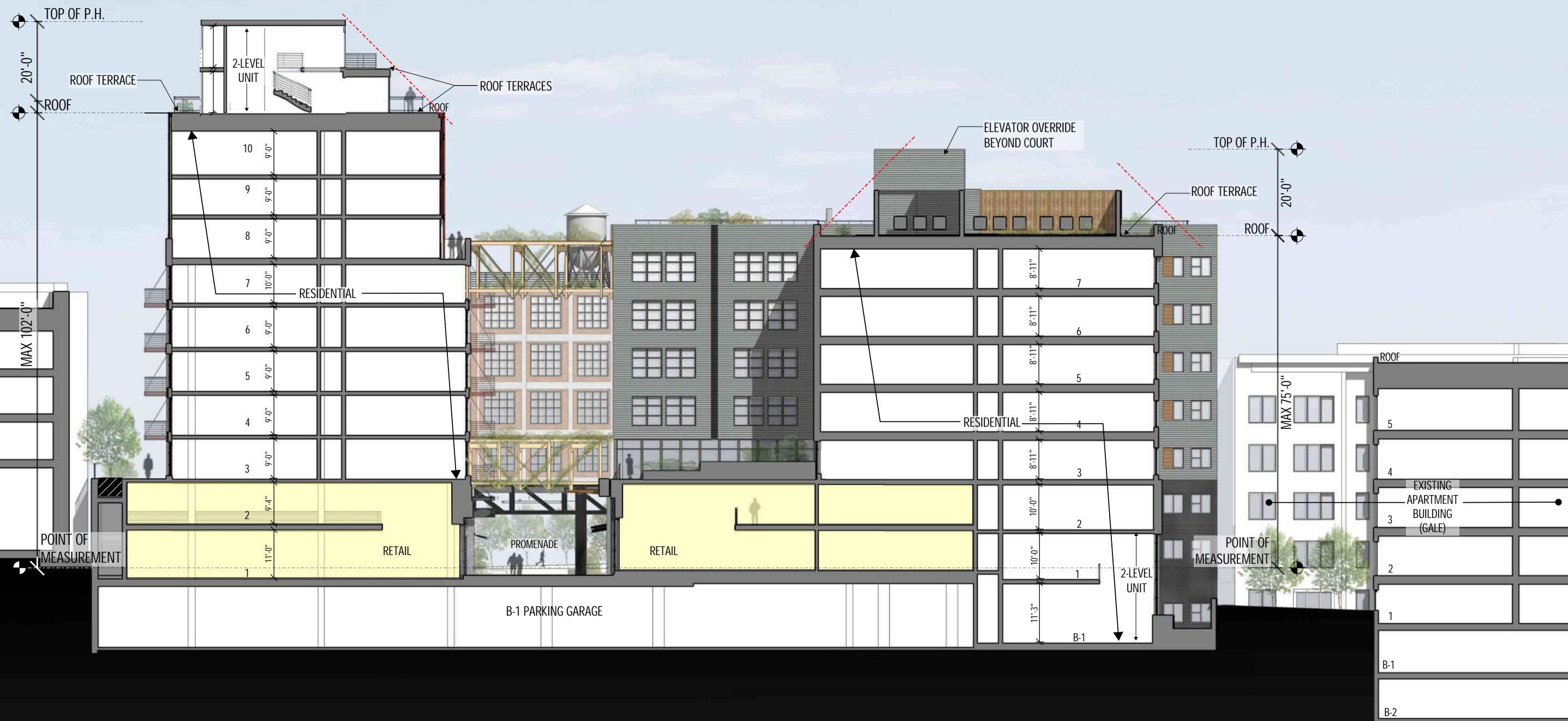


Notes:

1. Refer to floor plans for overall building dimensions.
2. Refer to sections for overall building height.
3. The exterior elevations, including door and window sizes and locations, the interior partition locations, the number, size, and locations of residential units, outdoor space, stairs, balcony and elevators are preliminary and shown for illustrative purposes only. The parking space layout is shown for illustrative purposes only. The final layouts may vary.
4. Retail storefronts, signage, and retail mezzanines are for illustrative purposes only and are subject to tenant modification. Applicant requests the flexibility to vary the final selection of the exterior materials within the color ranges and material types (maintaining the same general level of quality) proposed, based on availability at the time of construction and further project design.

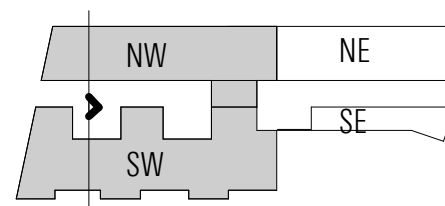


NW | NORTH ELEVATION

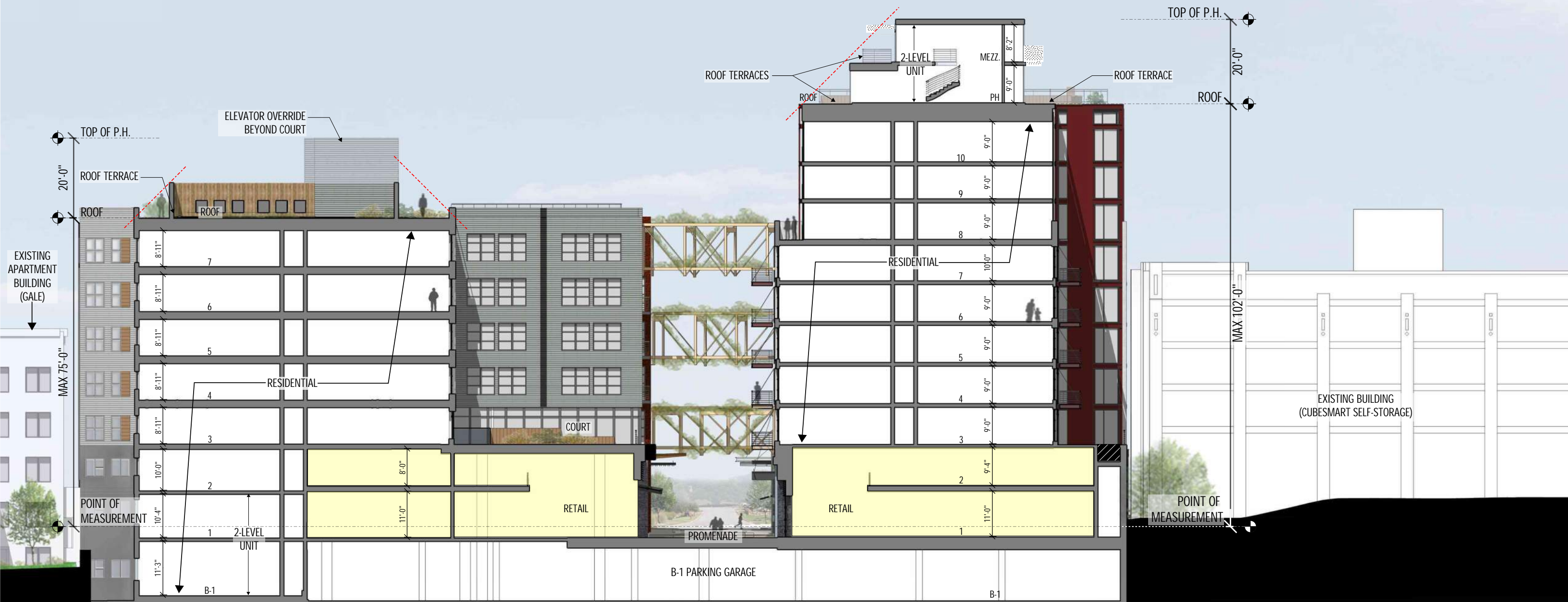


Notes:

1. Refer to floor plans for overall building dimensions.
2. Refer to sections for overall building height.
3. The exterior elevations, including door and window sizes and locations, the interior partition locations, the number, size, and locations of residential units, outdoor space, stairs, balcony and elevators are preliminary and shown for illustrative purposes only. The parking space layout is shown for illustrative purposes only. The final layouts may vary.
4. Retail storefronts, signage, and retail mezzanines are for illustrative purposes only and are subject to tenant modification. Applicant requests the flexibility to vary the final selection of the exterior materials within the color ranges and material types (maintaining the same general level of quality) proposed, based on availability at the time of construction and further project design.

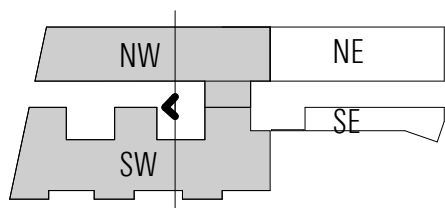


NW + SW | SECTION FACING EAST

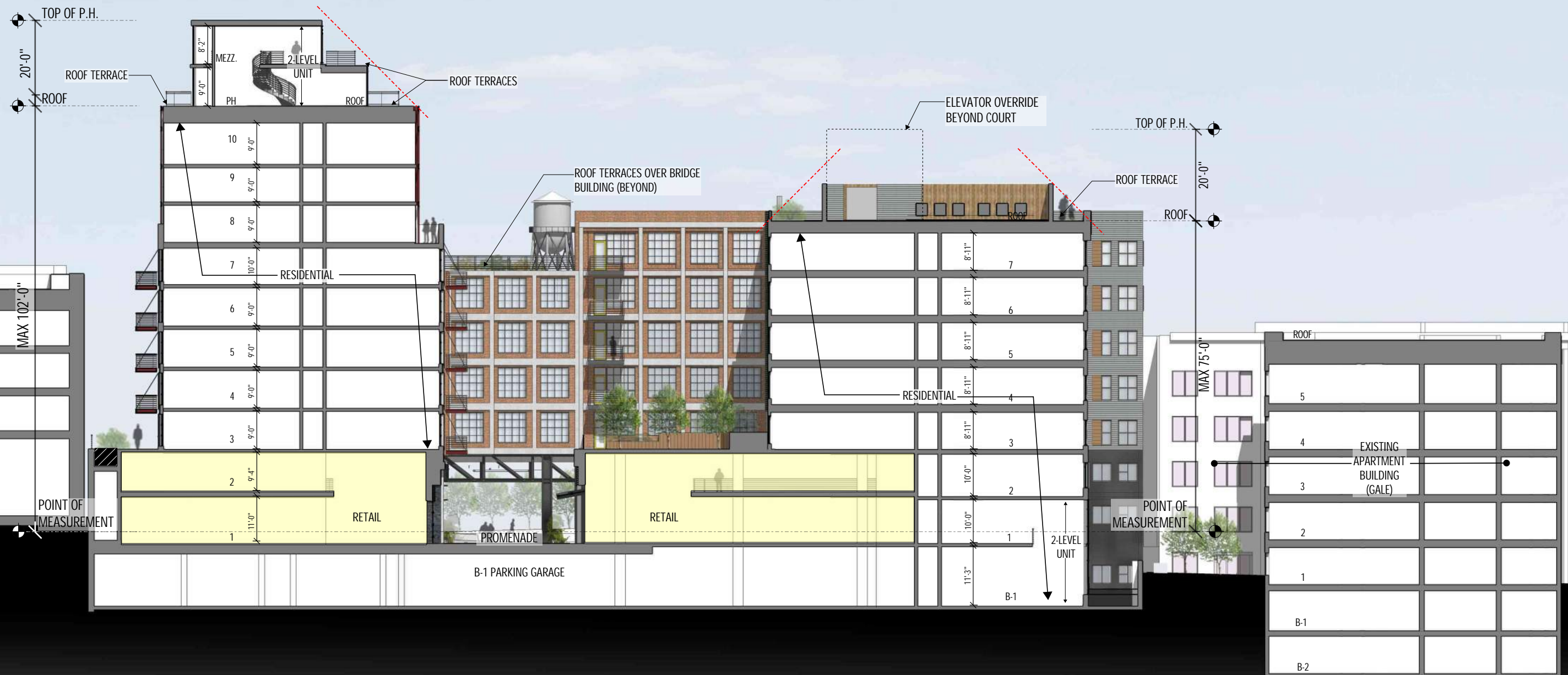


Notes:

1. Refer to floor plans for overall building dimensions.
2. Refer to sections for overall building height.
3. The exterior elevations, including door and window sizes and locations, the interior partition locations, the number, size, and locations of residential units, outdoor space, stairs, balcony and elevators are preliminary and shown for illustrative purposes only. The parking space layout is shown for illustrative purposes only. The final layouts may vary.
4. Retail storefronts, signage, and retail mezzanines are for illustrative purposes only and are subject to tenant modification. Applicant requests the flexibility to vary the final selection of the exterior materials within the color ranges and material types (maintaining the same general level of quality) proposed, based on availability at the time of construction and further project design.

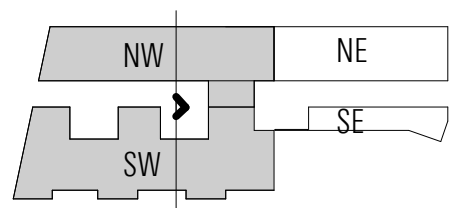


NW + SW | SECTION FACING WEST



Notes:

1. Refer to floor plans for overall building dimensions.
2. Refer to sections for overall building height.
3. The exterior elevations, including door and window sizes and locations, the interior partition locations, the number, size, and locations of residential units, outdoor space, stairs, balcony and elevators are preliminary and shown for illustrative purposes only. The parking space layout is shown for illustrative purposes only. The final layouts may vary.
4. Retail storefronts, signage, and retail mezzanines are for illustrative purposes only and are subject to tenant modification. Applicant requests the flexibility to vary the final selection of the exterior materials within the color ranges and material types (maintaining the same general level of quality) proposed, based on availability at the time of construction and further project design.

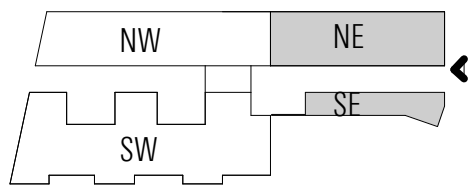


NW + SW | SECTION FACING EAST



Notes:

1. Refer to floor plans for overall building dimensions.
2. Refer to sections for overall building height.
3. The exterior elevations, including door and window sizes and locations, the interior partition locations, the number, size, and locations of residential units, outdoor space, stairs, balcony and elevators are preliminary and shown for illustrative purposes only. The parking space layout is shown for illustrative purposes only. The final layouts may vary.
4. Retail storefronts, signage, and retail mezzanines are for illustrative purposes only and are subject to tenant modification. Applicant requests the flexibility to vary the final selection of the exterior materials within the color ranges and material types (maintaining the same general level of quality) proposed, based on availability at the time of construction and further project design.

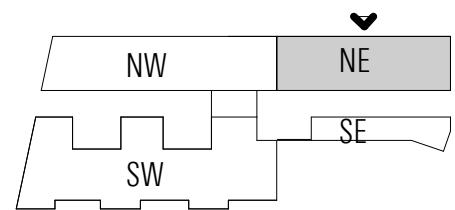


## HARRY THOMAS WAY STREET ELEVATION



Notes:

1. Refer to floor plans for overall building dimensions.
2. Refer to sections for overall building height.
3. The exterior elevations, including door and window sizes and locations, the interior partition locations, the number, size, and locations of residential units, outdoor space, stairs, balcony and elevators are preliminary and shown for illustrative purposes only. The parking space layout is shown for illustrative purposes only. The final layouts may vary.
4. Retail storefronts, signage, and retail mezzanines are for illustrative purposes only and are subject to tenant modification. Applicant requests the flexibility to vary the final selection of the exterior materials within the color ranges and material types (maintaining the same general level of quality) proposed, based on availability at the time of construction and further project design.



NE | NORTH ELEVATION

PRE-HEARING SUBMISSION | A3.12

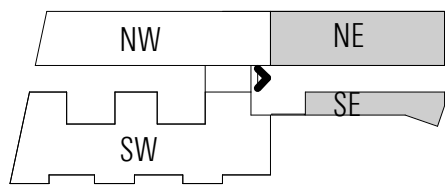
04/22/2016





Notes:

1. Refer to floor plans for overall building dimensions.
2. Refer to sections for overall building height.
3. The exterior elevations, including door and window sizes and locations, the interior partition locations, the number, size, and locations of residential units, outdoor space, stairs, balcony and elevators are preliminary and shown for illustrative purposes only. The parking space layout is shown for illustrative purposes only. The final layouts may vary.
4. Retail storefronts, signage, and retail mezzanines are for illustrative purposes only and are subject to tenant modification. Applicant requests the flexibility to vary the final selection of the exterior materials within the color ranges and material types (maintaining the same general level of quality) proposed, based on availability at the time of construction and further project design.

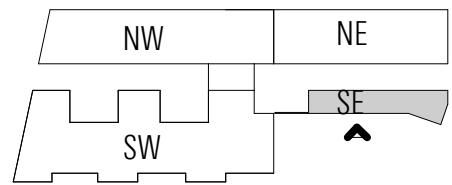


NE + SE | WEST ELEVATION



Notes:

1. Refer to floor plans for overall building dimensions.
2. Refer to sections for overall building height.
3. The exterior elevations, including door and window sizes and locations, the interior partition locations, the number, size, and locations of residential units, outdoor space, stairs, balcony and elevators are preliminary and shown for illustrative purposes only. The parking space layout is shown for illustrative purposes only. The final layouts may vary.
4. Retail storefronts, signage, and retail mezzanines are for illustrative purposes only and are subject to tenant modification. Applicant requests the flexibility to vary the final selection of the exterior materials within the color ranges and material types (maintaining the same general level of quality) proposed, based on availability at the time of construction and further project design.



SE | SOUTH ELEVATION

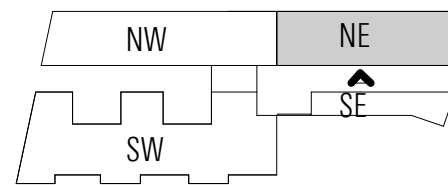
PRE-HEARING SUBMISSION | A3.14

04/22/2016



Notes:

1. Refer to floor plans for overall building dimensions.
2. Refer to sections for overall building height.
3. The exterior elevations, including door and window sizes and locations, the interior partition locations, the number, size, and locations of residential units, outdoor space, stairs, balcony and elevators are preliminary and shown for illustrative purposes only. The parking space layout is shown for illustrative purposes only. The final layouts may vary.
4. Retail storefronts, signage, and retail mezzanines are for illustrative purposes only and are subject to tenant modification. Applicant requests the flexibility to vary the final selection of the exterior materials within the color ranges and material types (maintaining the same general level of quality) proposed, based on availability at the time of construction and further project design.

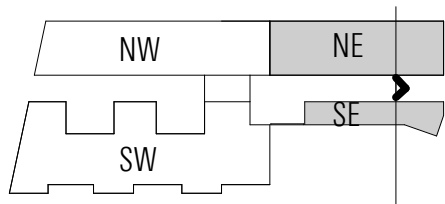


NE | SOUTH ELEVATION (PROMENADE)



Notes:

1. Refer to floor plans for overall building dimensions.
2. Refer to sections for overall building height.
3. The exterior elevations, including door and window sizes and locations, the interior partition locations, the number, size, and locations of residential units, outdoor space, stairs, balcony and elevators are preliminary and shown for illustrative purposes only. The parking space layout is shown for illustrative purposes only. The final layouts may vary.
4. Retail storefronts, signage, and retail mezzanines are for illustrative purposes only and are subject to tenant modification. Applicant requests the flexibility to vary the final selection of the exterior materials within the color ranges and material types (maintaining the same general level of quality) proposed, based on availability at the time of construction and further project design.

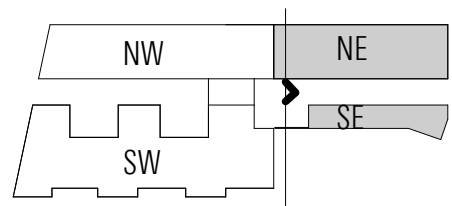


NE + SE | SECTION FACING EAST



Notes:

1. Refer to floor plans for overall building dimensions.
2. Refer to sections for overall building height.
3. The exterior elevations, including door and window sizes and locations, the interior partition locations, the number, size, and locations of residential units, outdoor space, stairs, balcony and elevators are preliminary and shown for illustrative purposes only. The parking space layout is shown for illustrative purposes only. The final layouts may vary.
4. Retail storefronts, signage, and retail mezzanines are for illustrative purposes only and are subject to tenant modification. Applicant requests the flexibility to vary the final selection of the exterior materials within the color ranges and material types (maintaining the same general level of quality) proposed, based on availability at the time of construction and further project design.



NE + SE | SECTION FACING EAST