

E Street Elevation

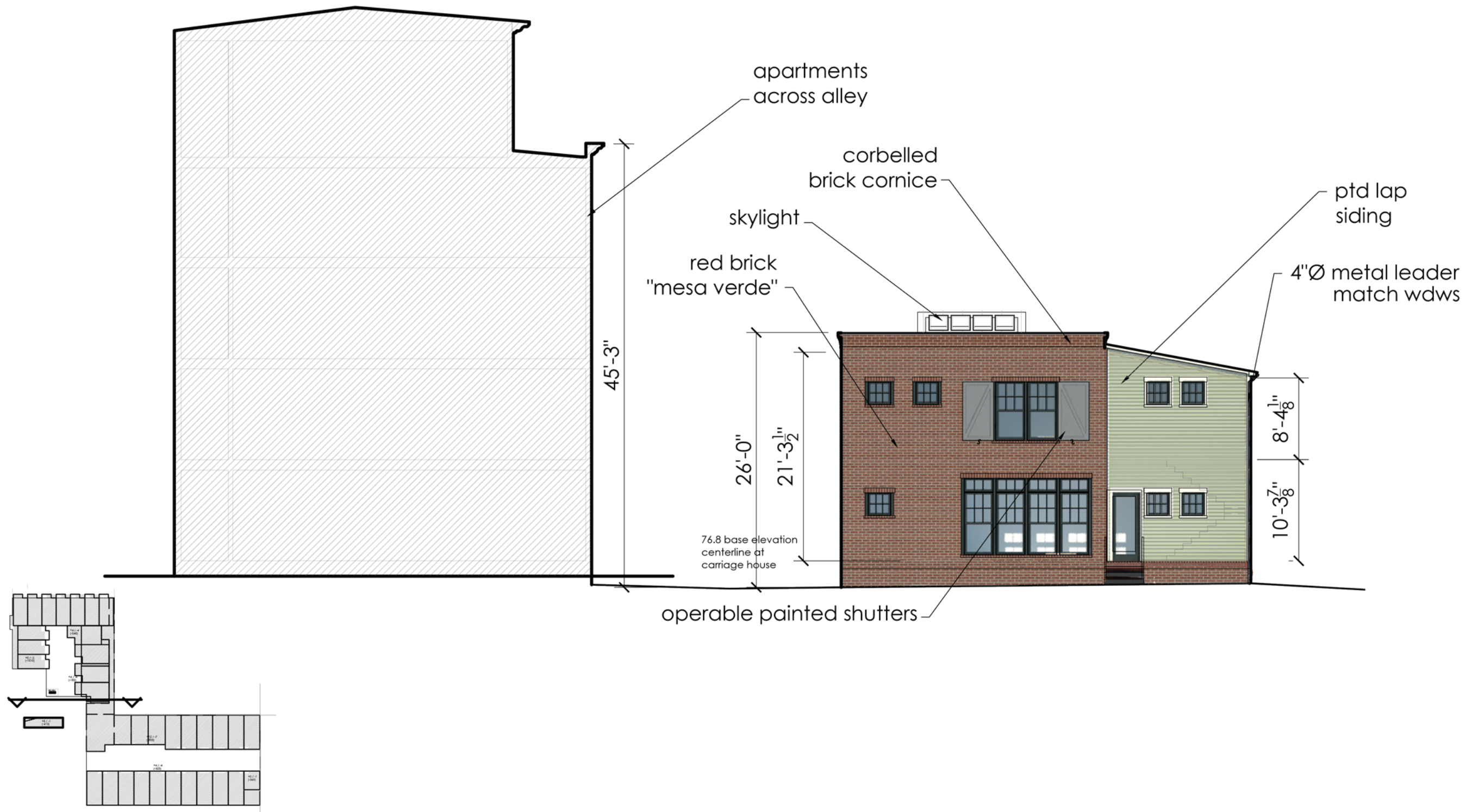
1311 E Street, SE Washington DC 20003

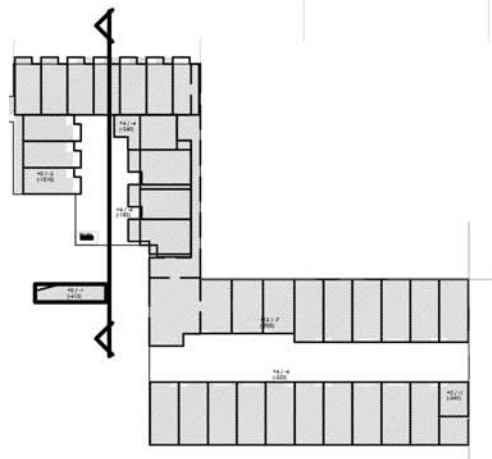
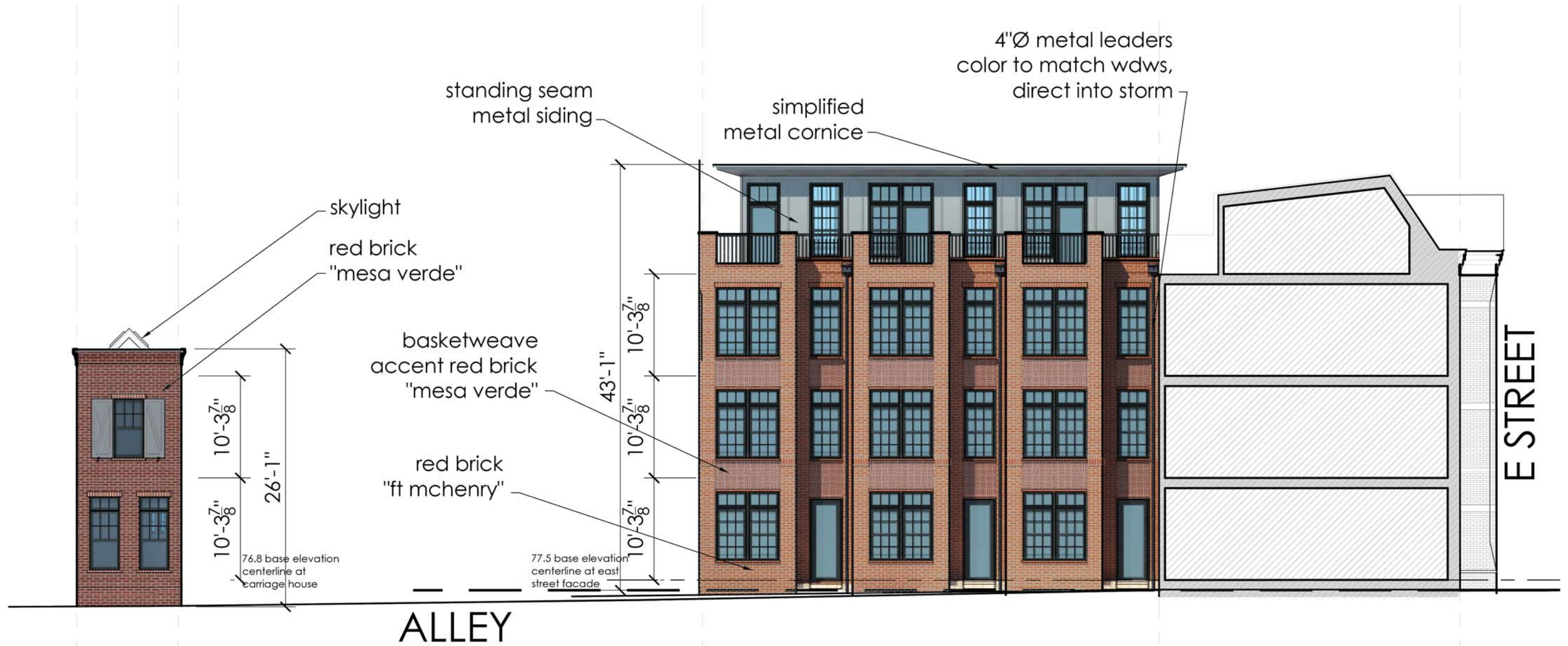


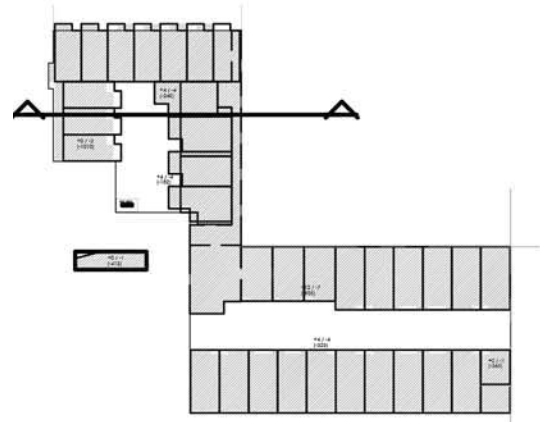
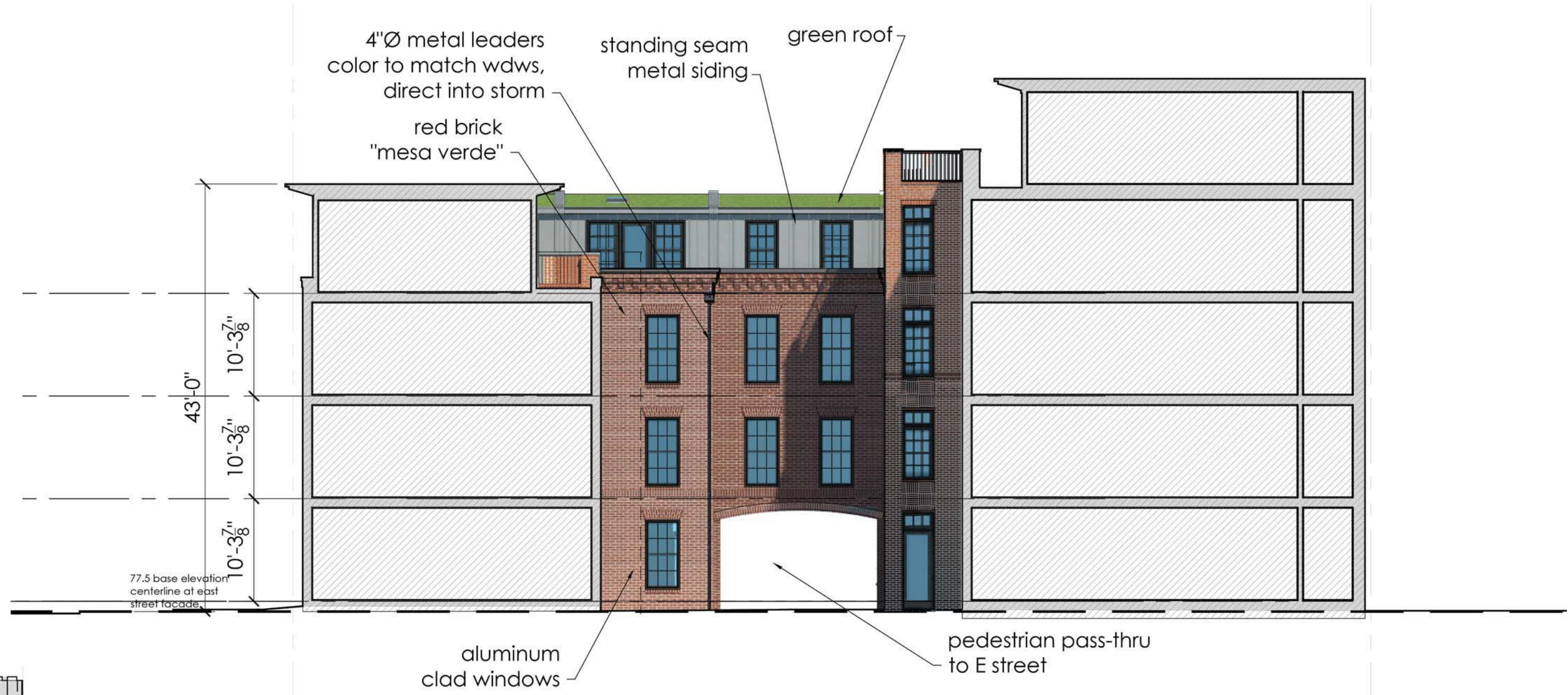
20 June 2016

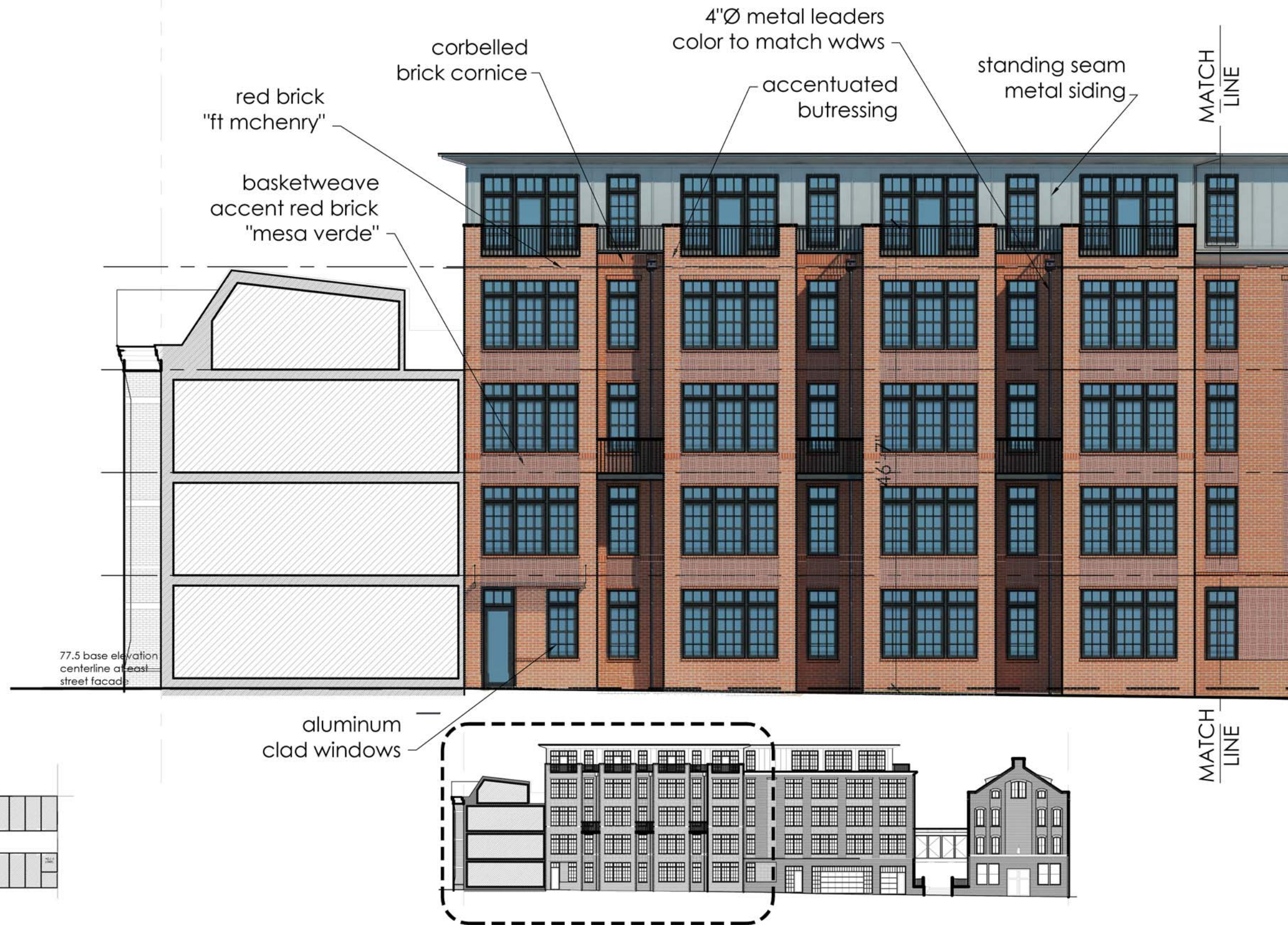
A. 29
 ZONING COMMISSION
 District of Columbia
 CASE NO. 15-13
 EXHIBIT NO. 47B2

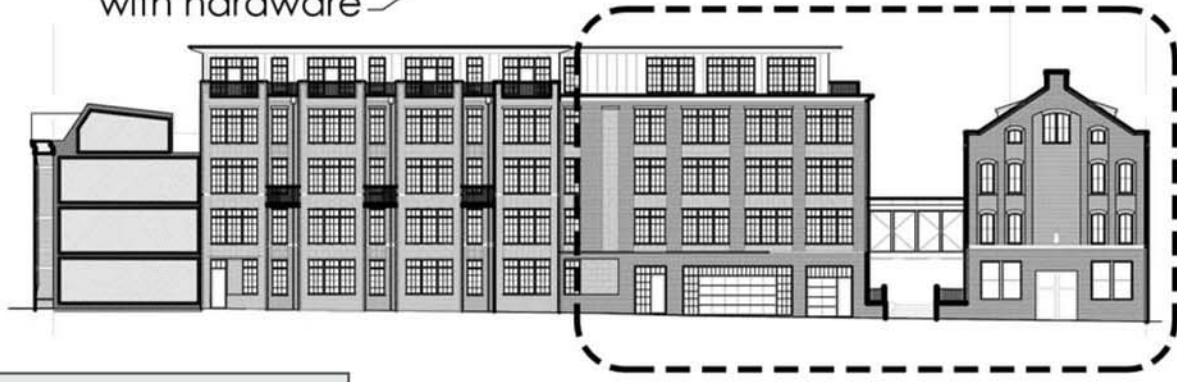
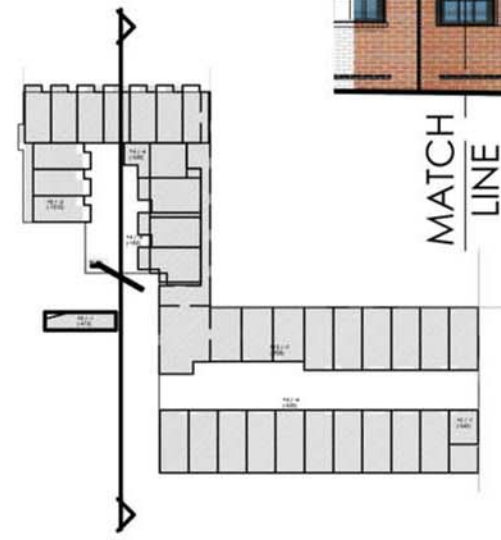












25' Alley looking east

1311 E Street, SE Washington DC 20003



note: internal drains on alleys
and south courtyard

MATCH
LINE

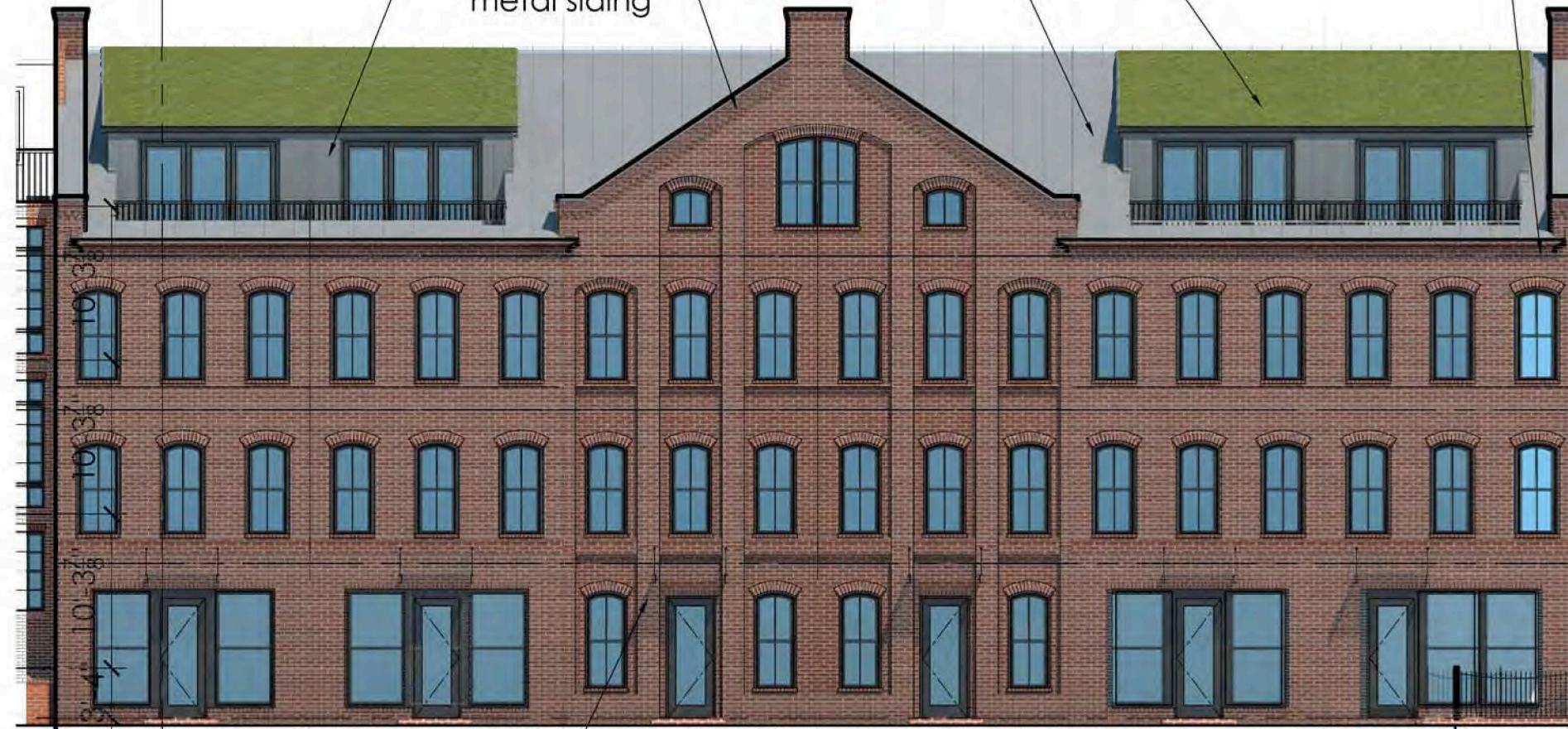
corbelled
brick rake

green roof

built-in gutter
along south court,
internal drain

standing seam
metal siding

standing seam
metal roof



MATCH
LINE

red brick
"mesa verde"

