





ENTRANCE VIEW FROM STREET



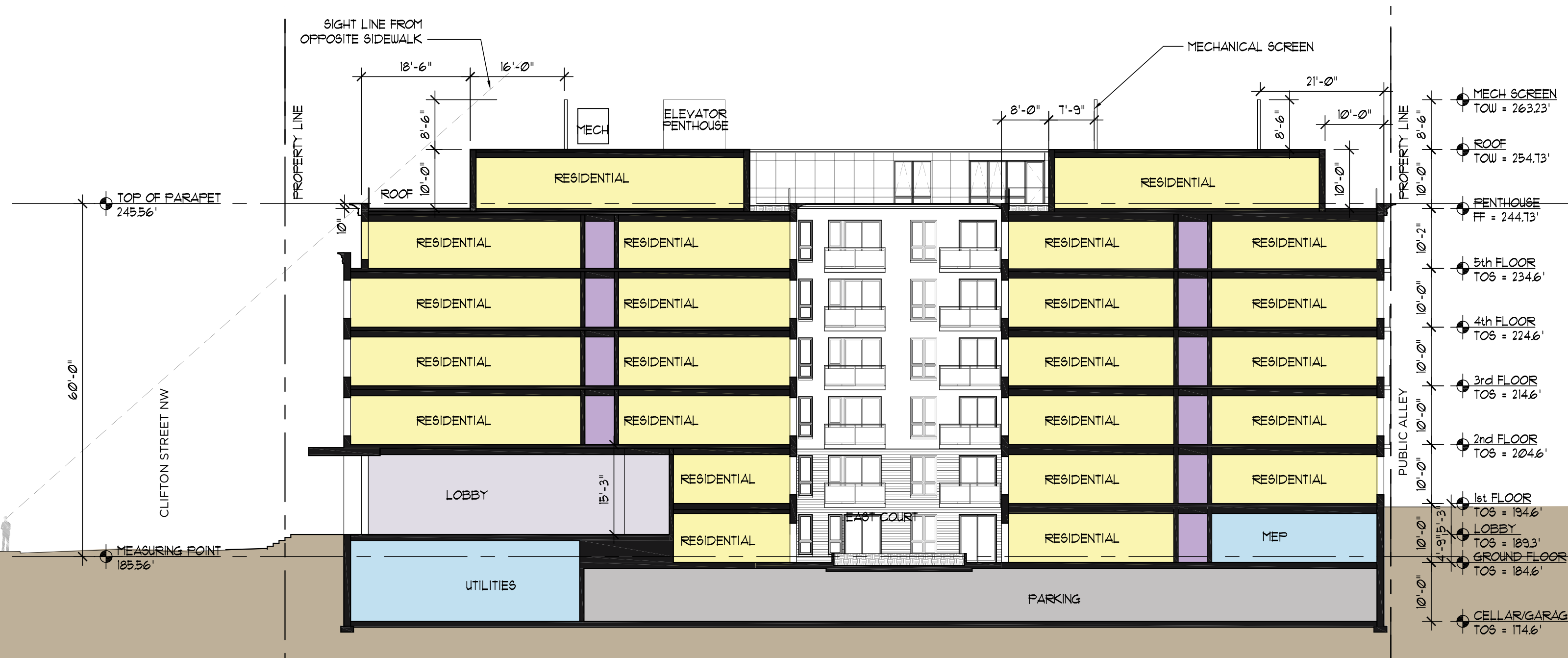
VIEW OF WEST COURT AND ROOF TERRACE FROM ADJACENT BUILDING



BUILDING AXONOMETRIC VIEW

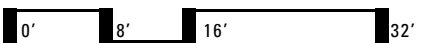
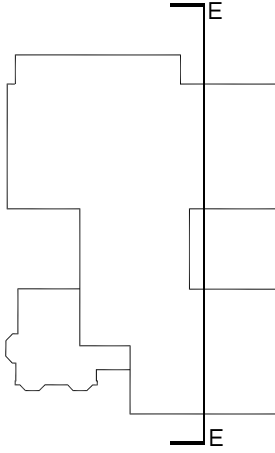


ALLEY PERSPECTIVE VIEW



SECTION E-E
1" = 16'-0"

- RESIDENTIAL
- CIRCULATION
- COMMUNITY
- MEP
- PARKING/BIKES/LOADING
- LANDSCAPE



A-27

Proposed Detail Building Section
1315 Clifton Street NW

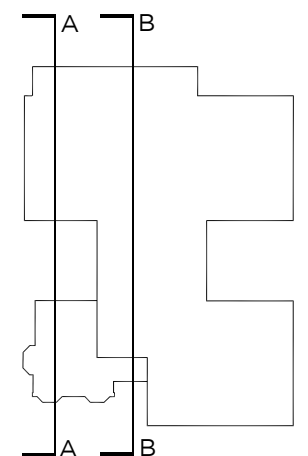
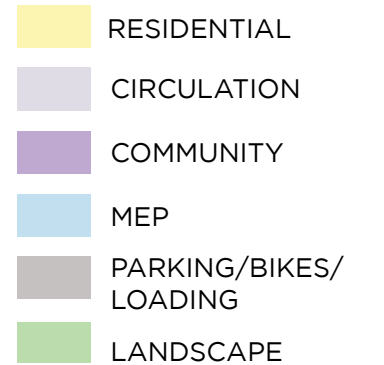
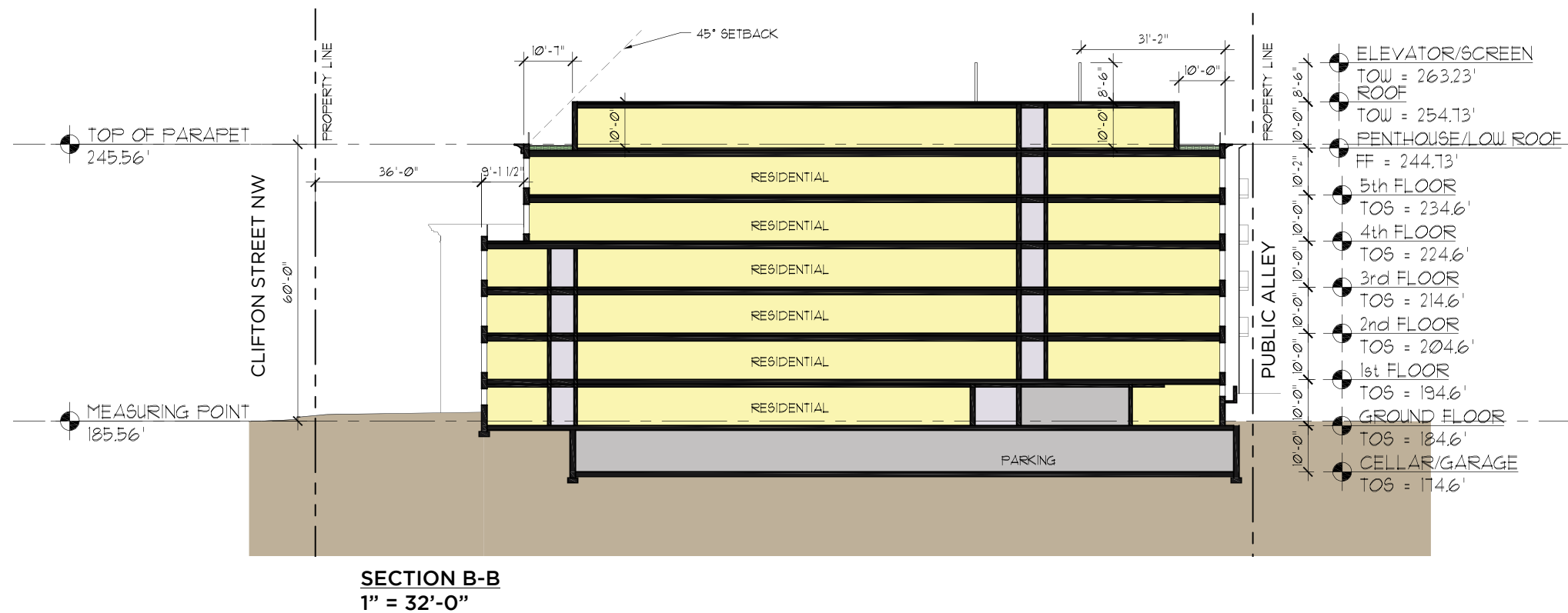
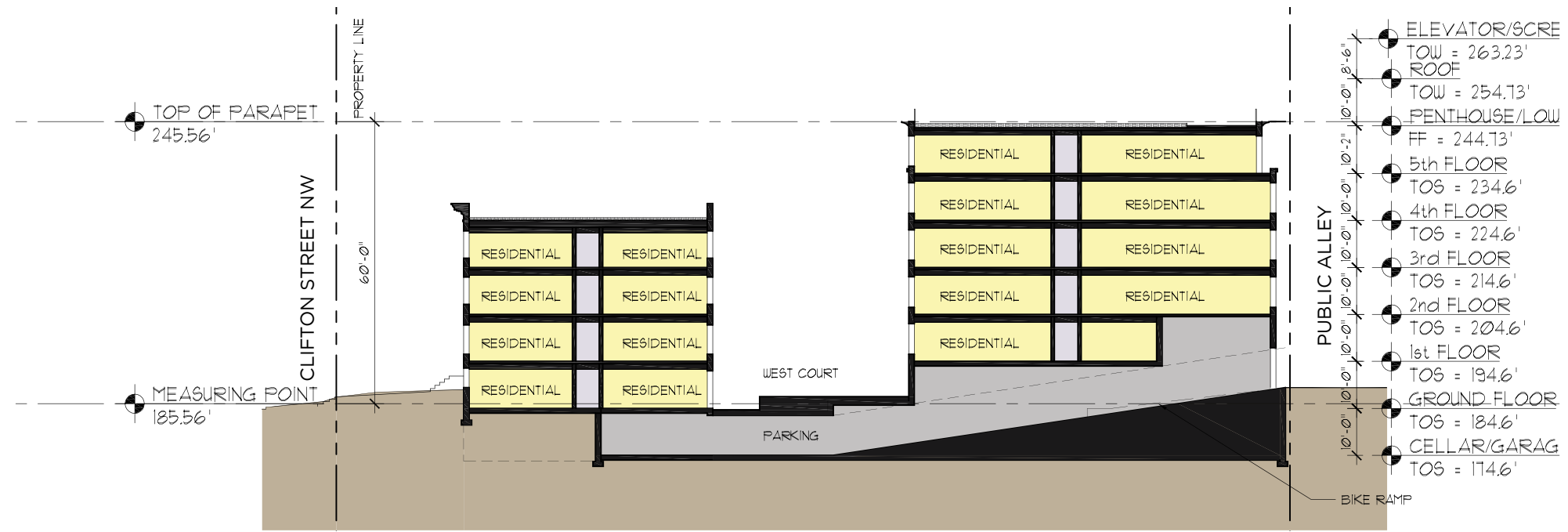
Washington, DC

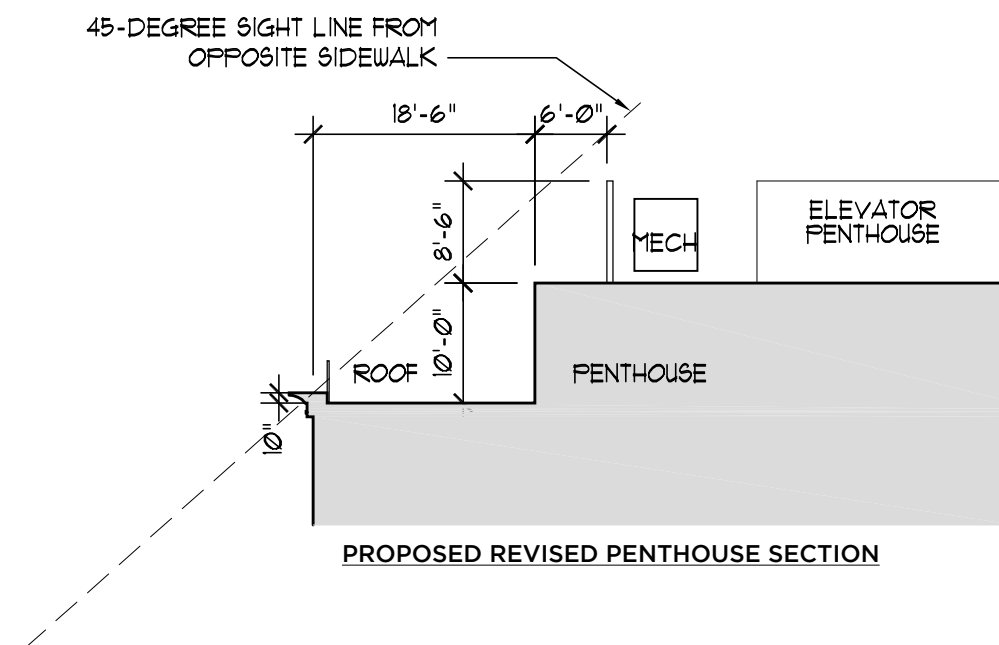
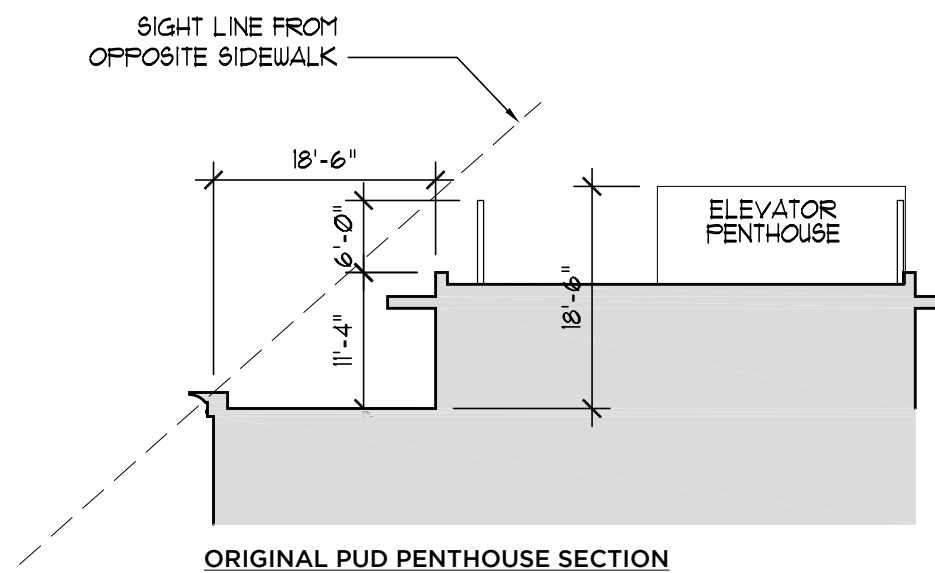
October 5, 2015



CUNNINGHAM | QUILL ARCHITECTS

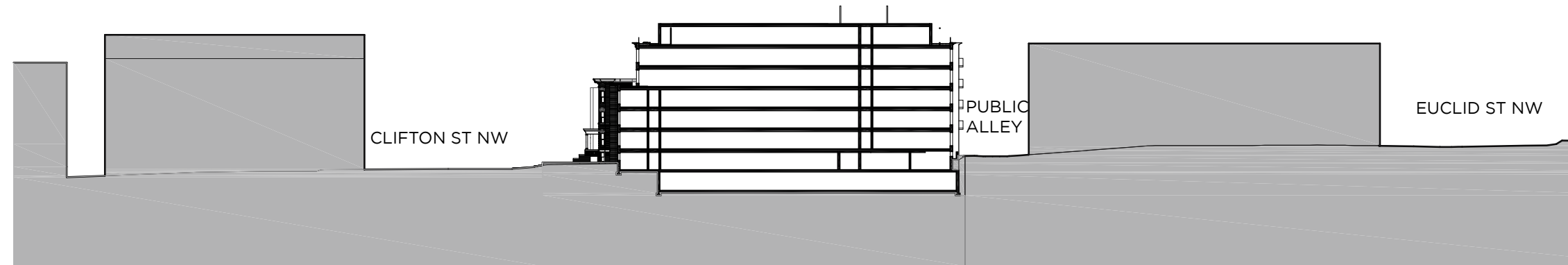
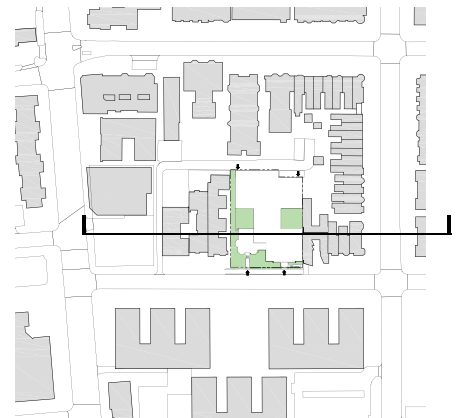
Copyright © 2015



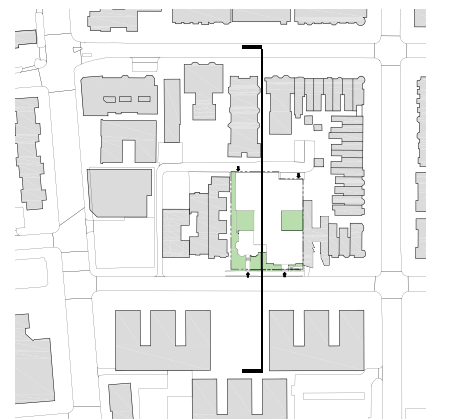




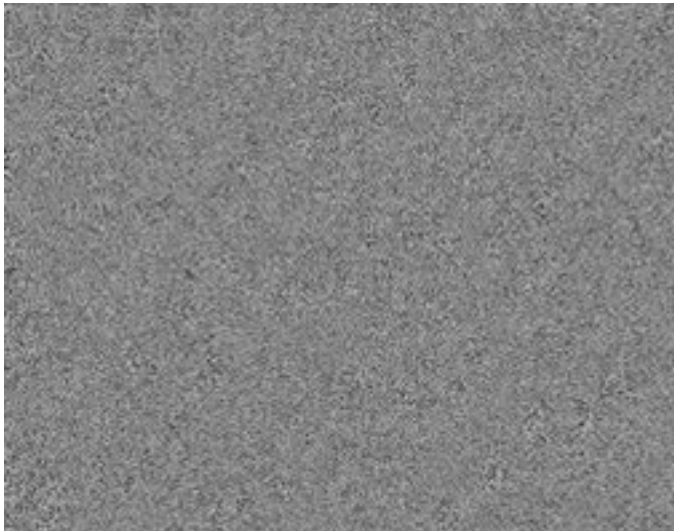
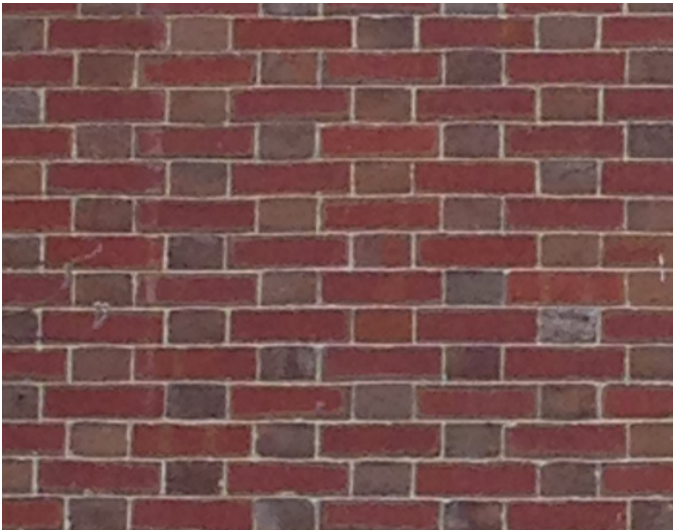
BLOCK SECTION
1/64" = 1'-0"



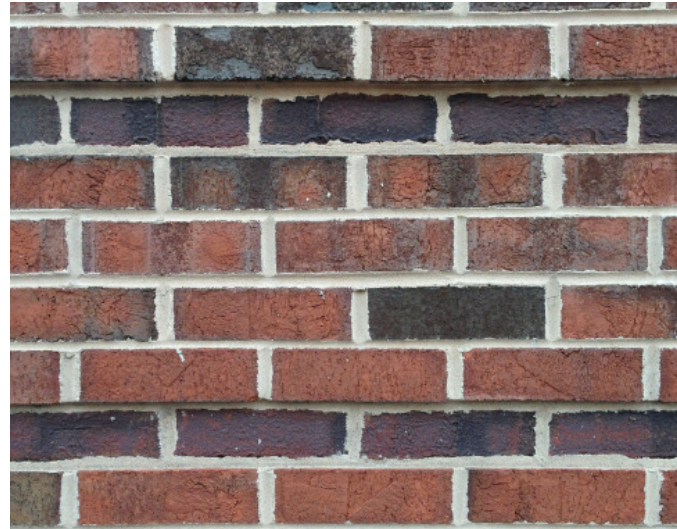
BLOCK SECTION
1/64" = 1'-0"



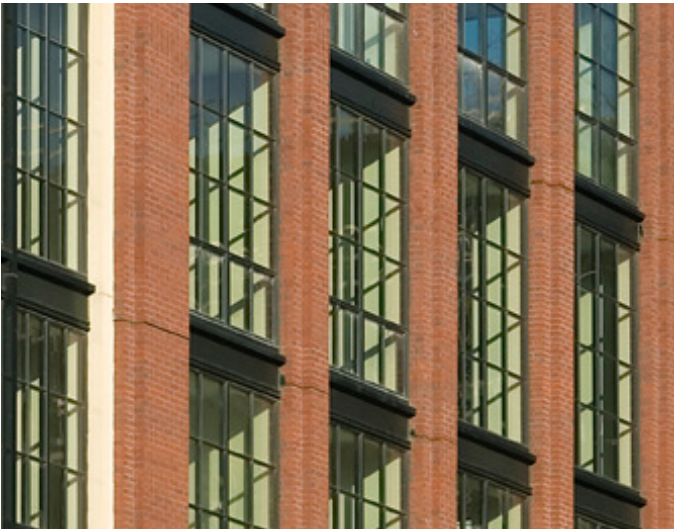
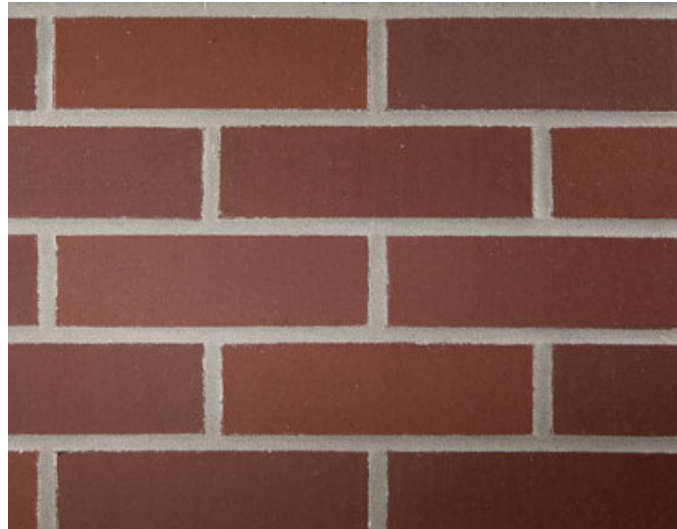




STONE BASE
GRAY



METAL PANEL
PENTHOUSE - WARM GRAY



METAL PANEL
INFILL PANELS -
DARK GRAY

WINDOWS
DARK GRAY/BLACK