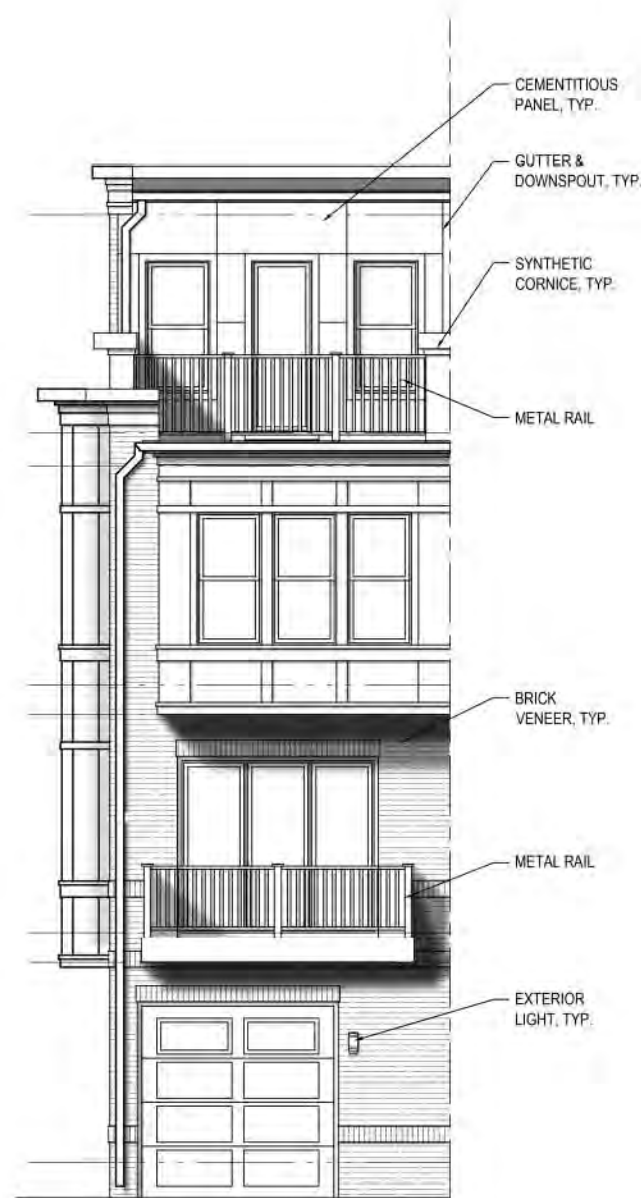
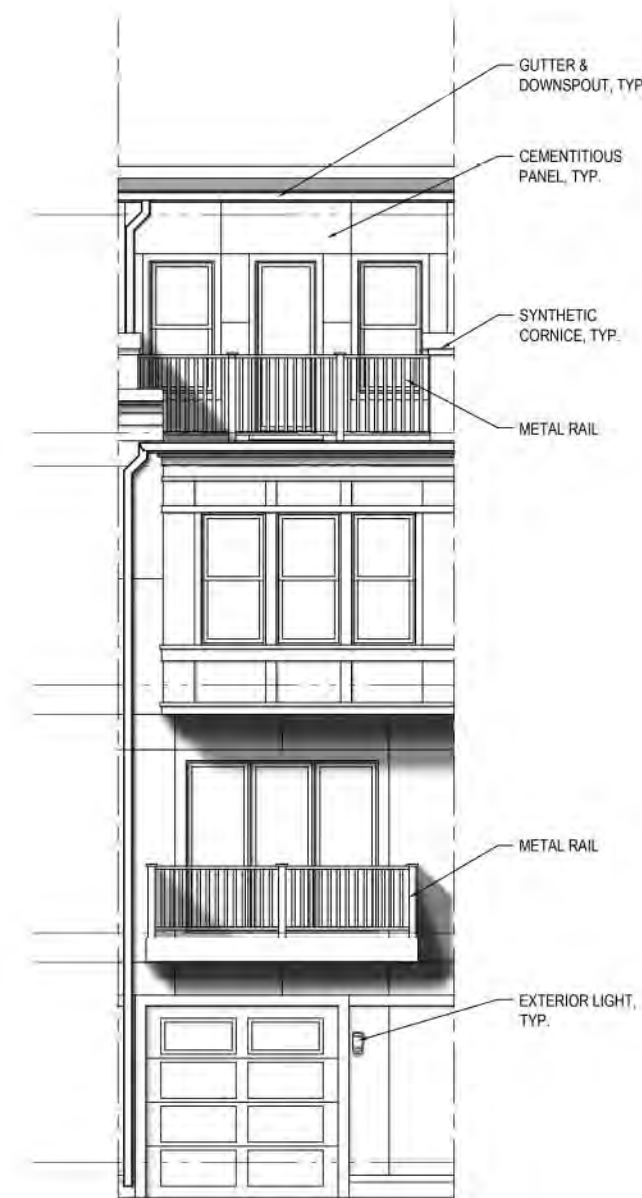


18' REAR
ELEV. END



14' REAR
ELEV. END



14' REAR
ELEV. TYP.

REAR ELEVATIONS

BROOKLAND TOWNHOMES
Washington, DC

MADISON HOMES

A.304



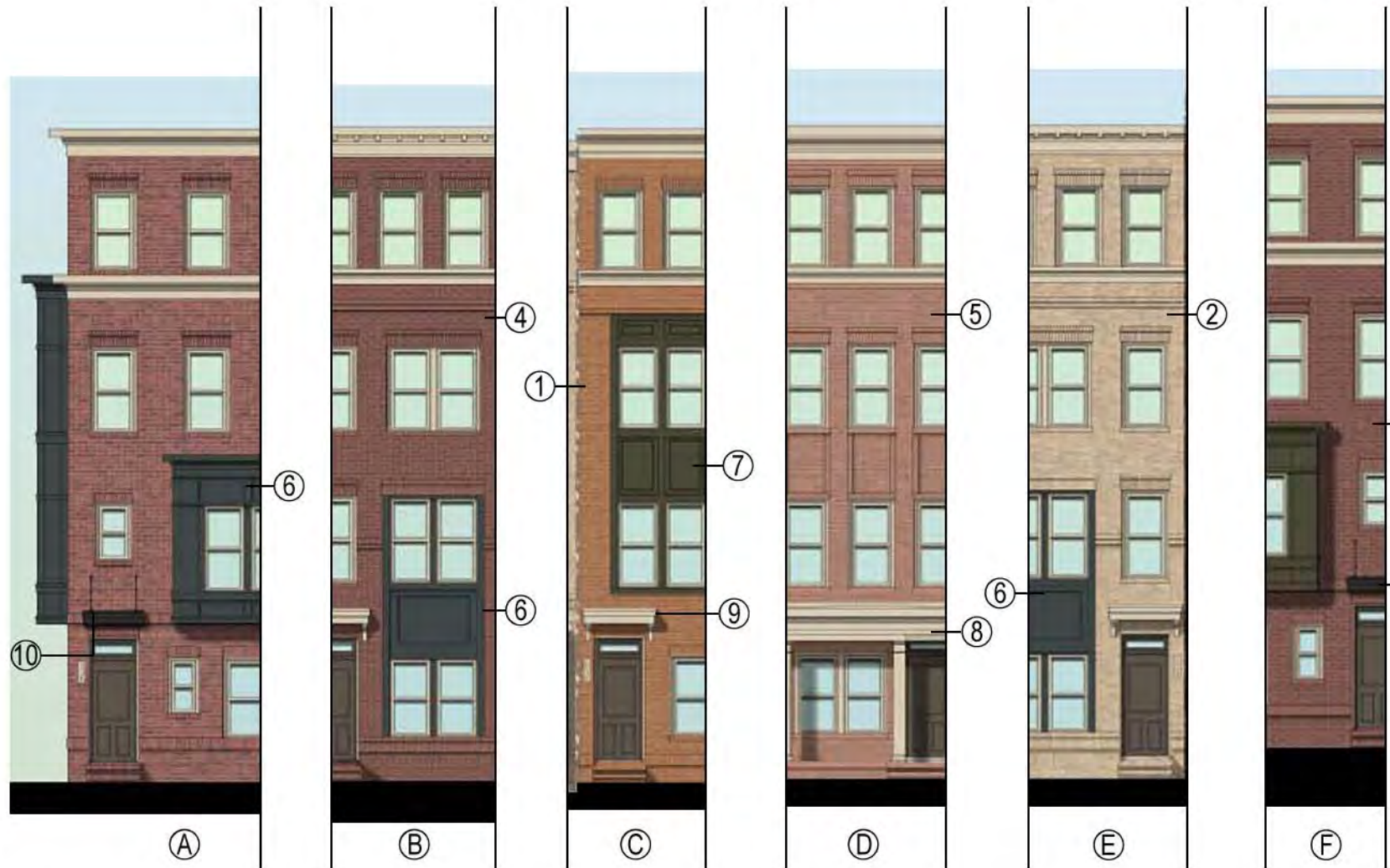
8521 Leesburg Pike Suite 700 Vienna, VA 22182
P: 571.830.1800 | F: 571.830.1801 | www.lessarddesign.com

© 2015 Lessard Design Inc. expressly reserves its common law copyright and other property rights in these plans. These plans are not to be changed or copied in any form or matter whatsoever, nor are they to be assigned to any third party without the express written permission and consent of Lessard Design, Inc.

10/09/15
ZONING COMMISSION
District of Columbia
MH1.009A.00D
CASE NO.15-02
EXHIBIT NO.26A3

0
SCALE 1/8" = 1'-0"

NOTES: (1) FLEXIBILITY IS REQUESTED TO VARY THE FINAL SELECTION OF THE EXTERIOR MATERIALS WITHIN THE COLOR RANGES AND GENERAL MATERIAL TYPES PROPOSED, BASED ON AVAILABILITY AT THE TIME OF CONSTRUCTION WITHOUT REDUCING THE QUALITY OF MATERIALS. (2) FLEXIBILITY IS REQUESTED TO MAKE MINOR REFINEMENTS TO EXTERIOR DETAILS AND DIMENSIONS, INCLUDING SILLS, BASES, CORNICES, RAILINGS AND TRIM, AND ANY OTHER CHANGES TO COMPLY WITH THE BUILDING CODES OR THAT OTHERWISE NECESSARY TO OBTAIN FINAL BUILDING PERMIT.



-  1 GENERAL SHALE - CAMPUS BLEND OR EQUIVALENT
-  2 GENERAL SHALE - TIDEWATER OR EQUIVALENT
-  3 GENERAL SHALE - COMMONWEALTH OR EQUIVALENT
-  4 GENERAL SHALE - VIRGINIA HIGHLANDS BRICK OR EQUIVALENT
-  5 GENERAL SHALE - LARIMER OR EQUIVALENT
-  6 McCORMICK PAINT - #0507 DEEP LAGOON OR EQUIVALENT
-  7 McCORMICK PAINT - #0443 SERPENTINE OR EQUIVALENT

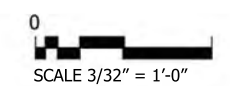


MATERIAL DETAILS

BROOKLAND TOWNHOMES
Washington, DC

A.400

MADISON HOMES



10/09/15
MHI.009A.00D



8521 Leesburg Pike Suite 700 Vienna, VA 22182
P: 571.830.1800 | F: 571.830.1801 | www.lessarddesign.com

© 2015 Lessard Design Inc. expressly reserves its common law copyright and other property rights in these plans. These plans are not to be changed or copied in any form or matter whatsoever, nor are they to be assigned to any third party without the express written permission and consent of Lessard Design, Inc.

PUD APPLICATION



REAR ELEVATIONS

S.7 S.3 S.1 S.1 S.5 S.3 S.3 S.1 S.1 S.2 S.2 S.3 S.4

MATERIAL SELECTIONS - FRONT							
BROOKLAND TH - MADISON HOMES							
	SCHEME 1	SCHEME 2	SCHEME 3	SCHEME 4	SCHEME 5	SCHEME 6	SCHEME 7
	CAMPUS BLEND OR EQUIVALENT	LARIMER OR EQUIVALENT	TIDEWATER OR EQUIVALENT	COMMON WEALTH OR EQUIVALENT	COMMON WEALTH OR EQUIVALENT	VIRGINIA HIGHLANDS OR EQUIVALENT	VIRGINIA HIGHLANDS OR EQUIVALENT
BRICK - GENERAL SHALE							
MORTAR - ESSROC CEMENT							
PRECAST - ROCK CAST AMV SERIES SMOOTH FACE OR EQUIVALENT	Bone -Smooth Face (RockCast AMV Series)	N/A	Bone -Smooth Face (RockCast AMV Series)	N/A	N/A	N/A	N/A
GUTTER COLOR - MCCORMICK PAINT	FLICKERING FLAME - 1005 G03	TRUMPET FLOWER - 1037 G05	MULLED CIDER - 0244 - G02	DARK MARMALADE - 1040 - G05	DARK MARMALADE - 1040 - G05	VALENTINO - 0046 - A07	VALENTINO - 0046 - A07
BAY PAINT COLOR - MCCORMICK PAINT	SERPENTINE - 0443 - G22	DEEP LAGOON - 0507 - A15	DEEP LAGOON - 0507 - A15	SERPENTINE - 0443 - G22	DEEP LAGOON - 0507 - A15	SERPENTINE - 0443 - G22	DEEP LAGOON - 0507 - A15
CORNICE / TRIM - SHERWIN WILLIAMS	SW7042 - SHOJI WHITE						
HARDI PANEL - JAMES HARDIE - REAR ONLY	GRAY SLATE						
FRONT DOOR COLOR - SHERWIN WILLIAMS	SW2808 ROOKWOOD DARK BROWN	SW2828 POLISHED MAHOGANY	SW2808 ROOKWOOD DARK BROWN	SW2808 ROOKWOOD DARK BROWN	SW6991 BLACK MAGIC	SW2828 POLISHED MAHOGANY	SW6991 BLACK MAGIC
METAL RAILING	BLACK						
METAL CANOPY - PAC - CLAD	MATTE BLACK						
METAL ROOF - PAC CLAD	MATTE BLACK						
WINDOW JELD-WEN	WHITE						
GARAGE DOOR	ALMOND						

WINDOW

JELD-WEN BUILDERS VINYL SINGLE-HUNG WINDOW



FRONT EXTERIOR LIGHT

BURGESS LIGHTING - KIC-9785OZ 10.5" W X 21" H 3-7 WATT CFL CANDELABRA BASE OLDE BRONZE CLEAR BEVELED GLASS



REAR EXTERIOR LIGHT

BURGESS LIGHTING - KIC-9783OZ 7" W X 10" H 1-14 WATT CFL CANDELABRA BASE OLDE BRONZE CLEAR BEVELED GLASS



8521 Leesburg Pike Suite 700 Vienna, VA 22182
P: 571.830.1800 | F: 571.830.1801 | www.lessarddesign.com

© 2013 Lessard Design Inc. expressly reserves its common law copyright and other property rights in these plans. These plans are not to be changed or copied in any form or matter whatsoever, nor are they to be assigned to any third party without the express written permission and consent of Lessard Design, Inc.

MATERIAL SELECTIONS

PUD APPLICATION

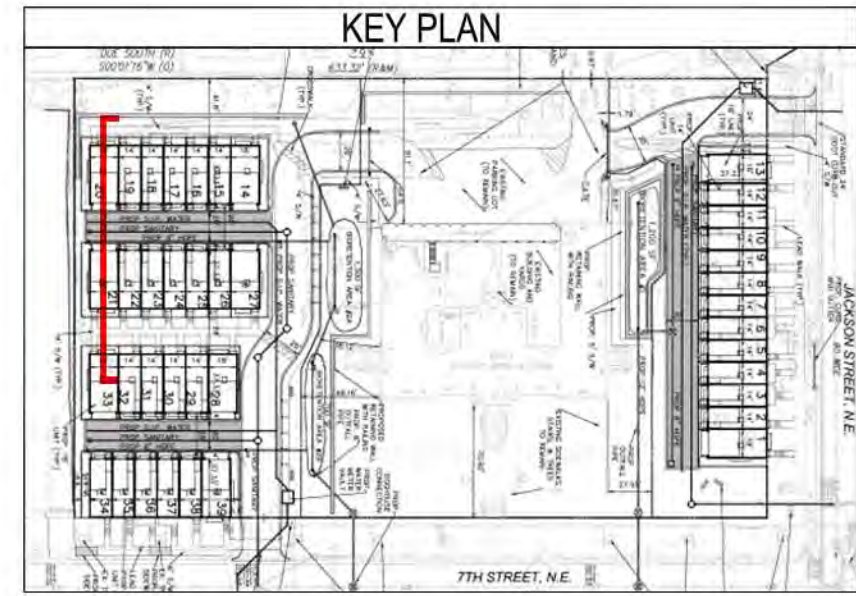
BROOKLAND TOWNHOMES
Washington, DC

MADISON HOMES

A.401

10/09/15
MHI.009A.00D

NOTES: (1) FLEXIBILITY IS REQUESTED TO VARY THE FINAL SELECTION OF THE EXTERIOR MATERIALS WITHIN THE COLOR RANGES AND GENERAL MATERIAL TYPES PROPOSED, BASED ON AVAILABILITY AT THE TIME OF CONSTRUCTION WITHOUT REDUCING THE QUALITY OF MATERIALS. (2) FLEXIBILITY IS REQUESTED TO MAKE MINOR REFINEMENTS TO EXTERIOR DETAILS AND DIMENSIONS, INCLUDING SILLS, BASES, CORNICES, RAILINGS AND TRIM, AND ANY OTHER CHANGES TO COMPLY WITH THE BUILDING CODES OR THAT OTHERWISE NECESSARY TO OBTAIN FINAL BUILDING PERMIT.



NOTE: SEE CIVIL FOR FURTHER DIMENSIONING



8521 Leesburg Pike Suite 700 Vienna, VA 22182
P: 571.830.1800 | F: 571.830.1801 | www.lessarddesign.com

© 2015 Lessard Design Inc. expressly reserves its common law copyright and other property rights in these plans. These plans are not to be changed or copied in any form or matter whatsoever, nor are they to be assigned to any third party without the express written permission and consent of Lessard Design, Inc.

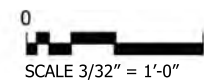
CONCEPTUAL ELEVATIONS

CONCEPTUAL ALLEY ELEVATION
PUD APPLICATION

BROOKLAND TOWNHOMES
Washington, DC

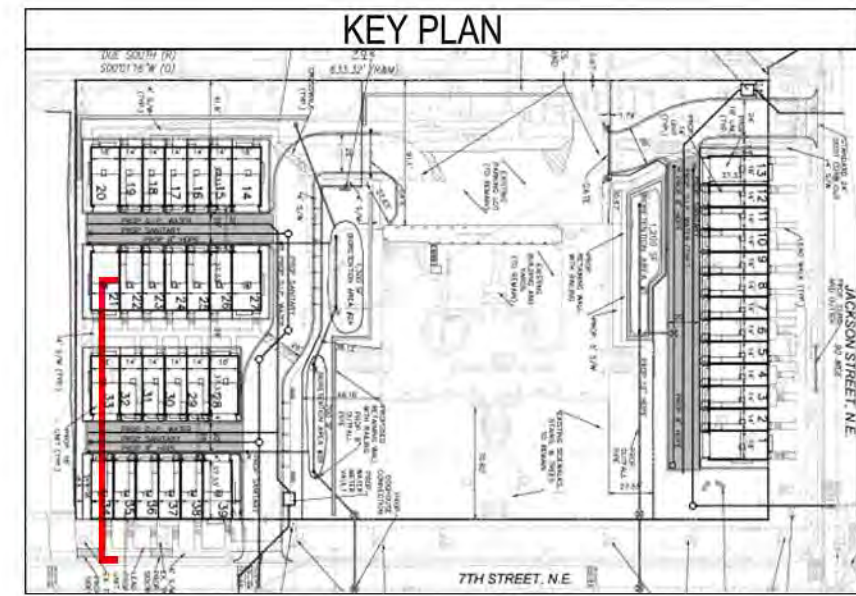
MADISON HOMES

A.500



10/09/15
MHI.009A.00D

NOTES: (1) FLEXIBILITY IS REQUESTED TO VARY THE FINAL SELECTION OF THE EXTERIOR MATERIALS WITHIN THE COLOR RANGES AND GENERAL MATERIAL TYPES PROPOSED, BASED ON AVAILABILITY AT THE TIME OF CONSTRUCTION WITHOUT REDUCING THE QUALITY OF MATERIALS. (2) FLEXIBILITY IS REQUESTED TO MAKE MINOR REFINEMENTS TO EXTERIOR DETAILS AND DIMENSIONS, INCLUDING SILLS, BASES, CORNICES, RAILINGS AND TRIM, AND ANY OTHER CHANGES TO COMPLY WITH THE BUILDING CODES OR THAT OTHERWISE NECESSARY TO OBTAIN FINAL BUILDING PERMIT.



NOTE: SEE CIVIL FOR FOR FUTHER DIMENSIONING



8521 Leesburg Pike Suite 700 Vienna, VA 22182
P: 571.830.1800 | F: 571.830.1801 | www.lessarddesign.com

© 2015 Lessard Design Inc. expressly reserves its common law copyright and other property rights in these plans. These plans are not to be changed or copied in any form or matter whatsoever, nor are they to be assigned to any third party without the express written permission and consent of Lessard Design, Inc.

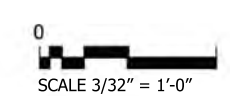
CONCEPTUAL ELEVATIONS

CONCEPTUAL ALLEY ELEVATION
PUD APPLICATION

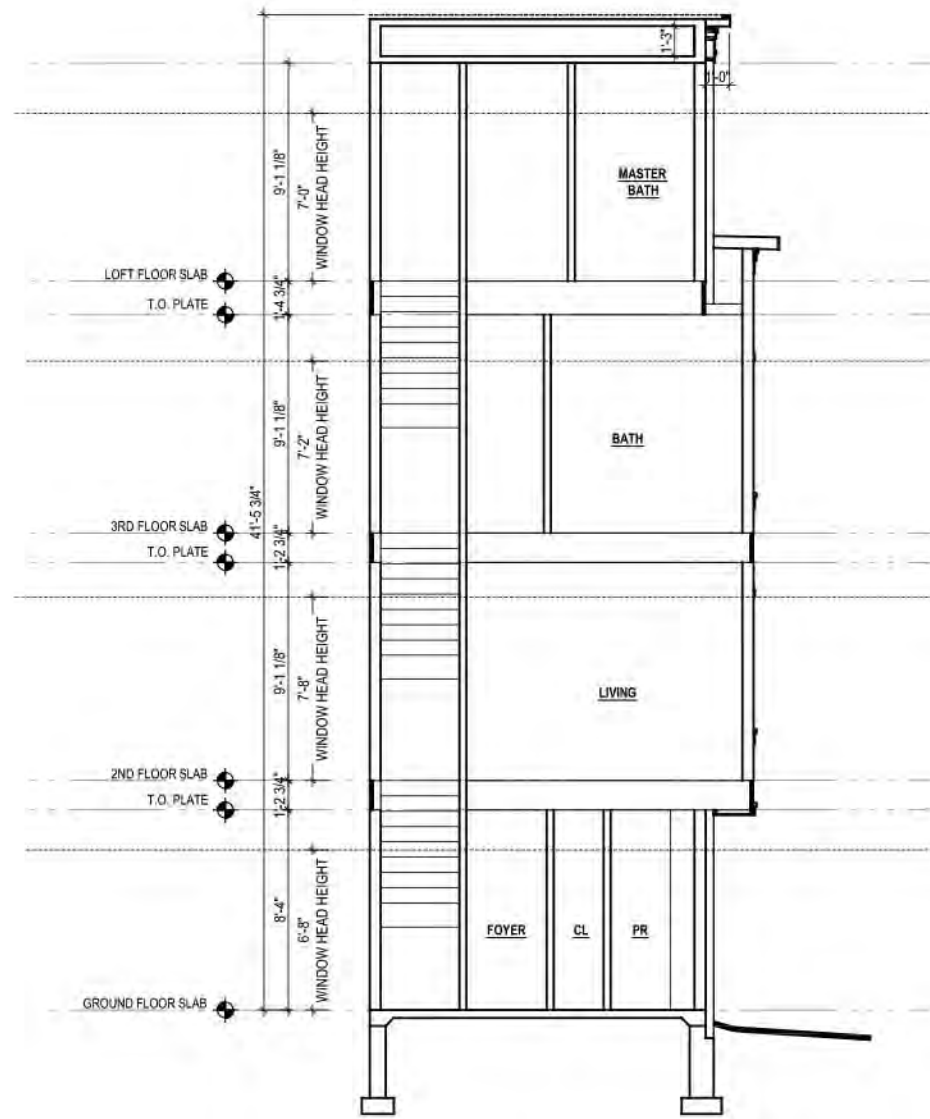
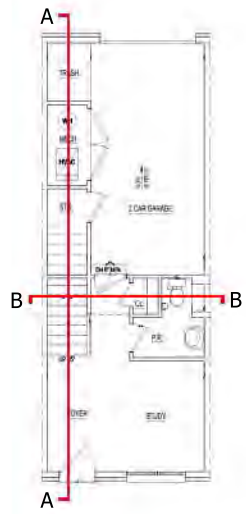
BROOKLAND TOWNHOMES
Washington, DC

MADISON HOMES

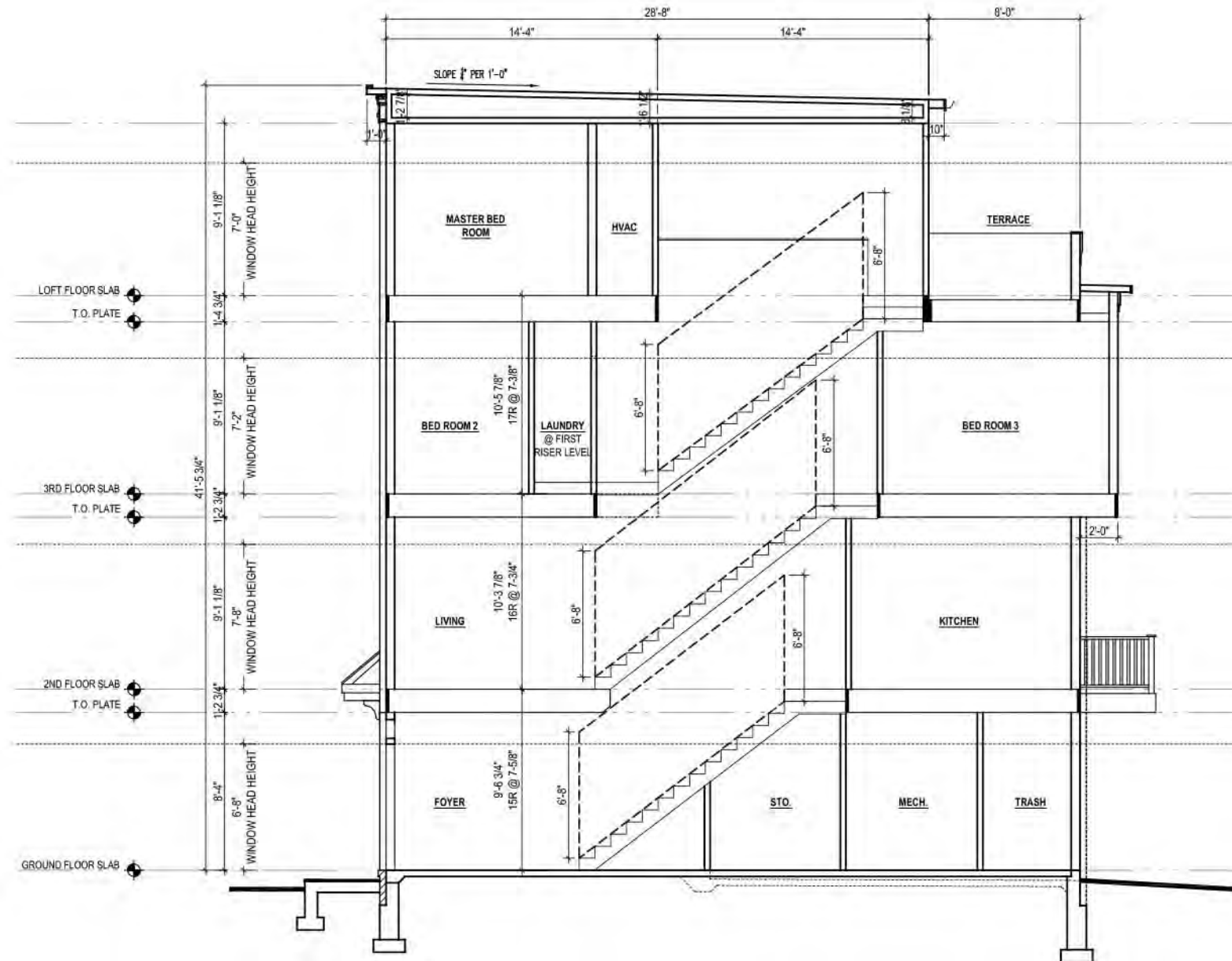
A.501



10/09/15
MHI.009A.00D



B



A

INTERIOR PLAN LAYOUTS ARE CONCEPTUAL AND FOR ILLUSTRATIVE PURPOSES; FINAL LAYOUTS MAY VARY.



8521 Leesburg Pike Suite 700 Vienna, VA 22182
 P: 571.830.1800 | F: 571.830.1801 | www.lessarddesign.com

© 2013 Lessard Design Inc. expressly reserves its common law copyright and other property rights in these plans. These plans are not to be changed or copied in any form or matter whatsoever, nor are they to be assigned to any third party without the express written permission and consent of Lessard Design, Inc.

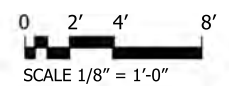
CONCEPTUAL SECTION

14' X 37' UNIT
 PUD APPLICATION

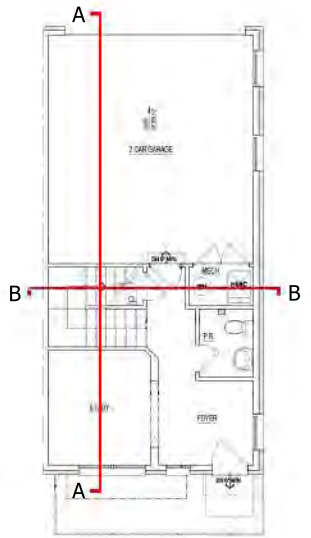
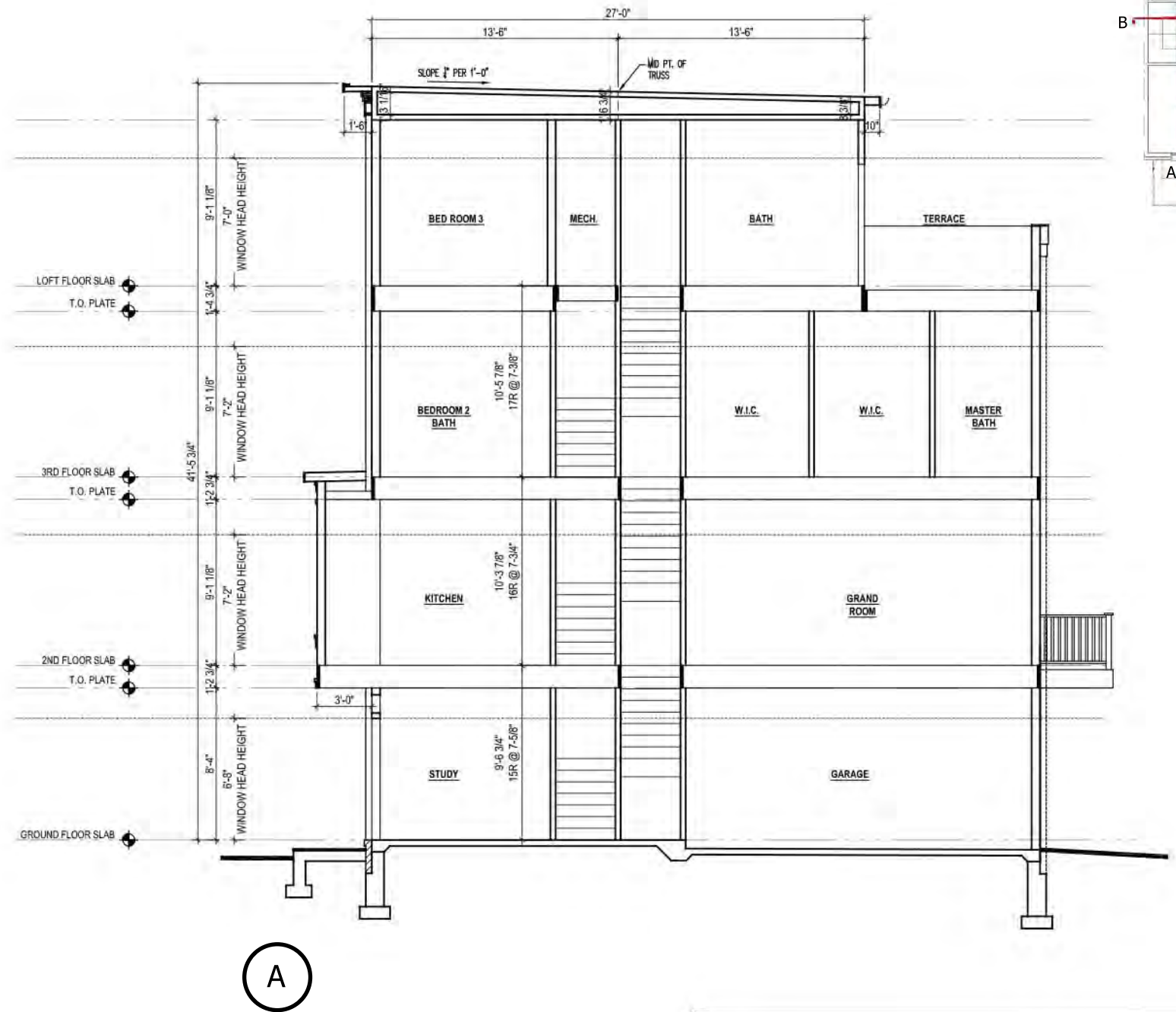
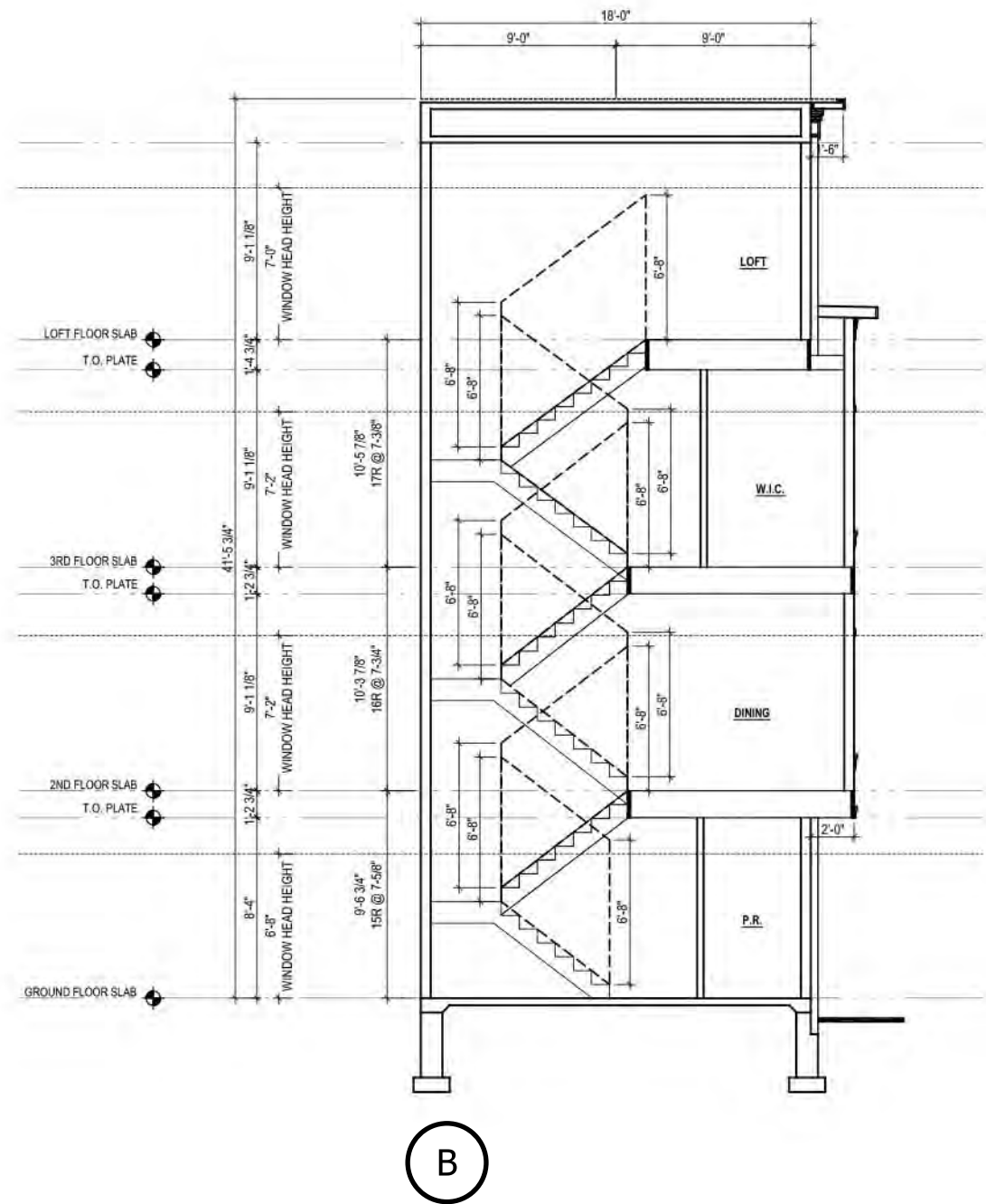
BROOKLAND TOWNHOMES
 Washington, DC

MADISON HOMES

A.600



10/09/15
 MHI.009A.00D



INTERIOR PLAN LAYOUTS ARE CONCEPTUAL AND FOR ILLUSTRATIVE PURPOSES; FINAL LAYOUTS MAY VARY.



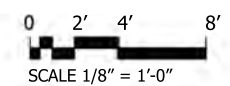
8521 Leesburg Pike Suite 700 Vienna, VA 22182
 P: 571.830.1800 | F: 571.830.1801 | www.lessarddesign.com

© 2015 Lessard Design Inc. expressly reserves its common law copyright and other property rights in these plans. These plans are not to be changed or copied in any form or matter whatsoever, nor are they to be assigned to any third party without the express written permission and consent of Lessard Design, Inc.

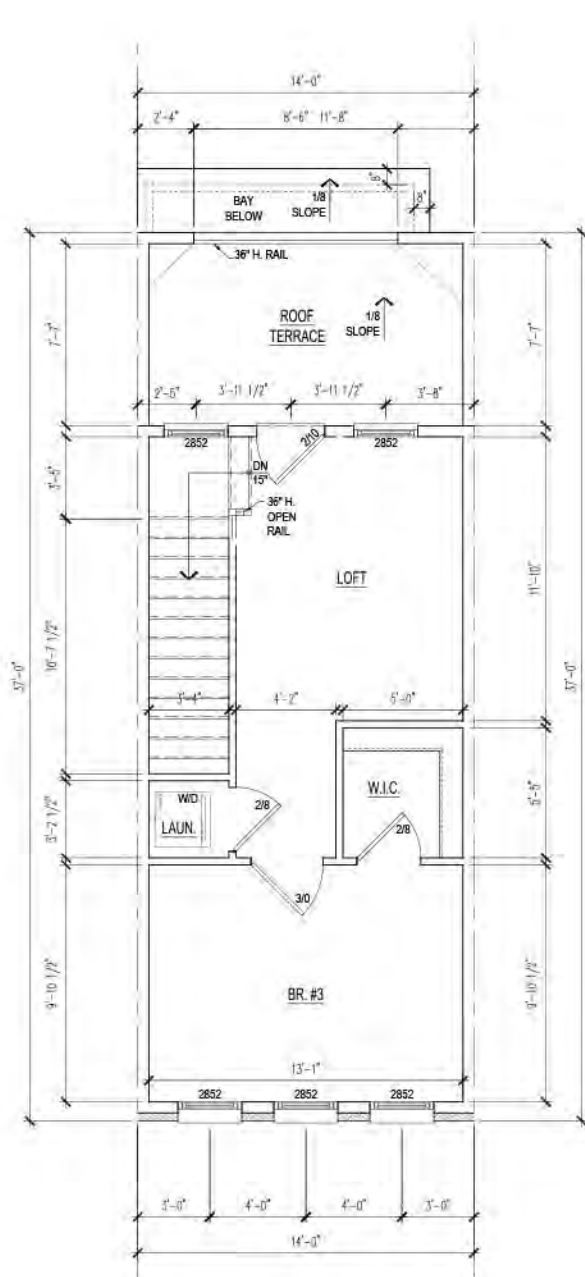
CONCEPTUAL SECTION
18' X 37' UNIT
 PUD APPLICATION

BROOKLAND TOWNHOMES
 Washington, DC
 MADISON HOMES

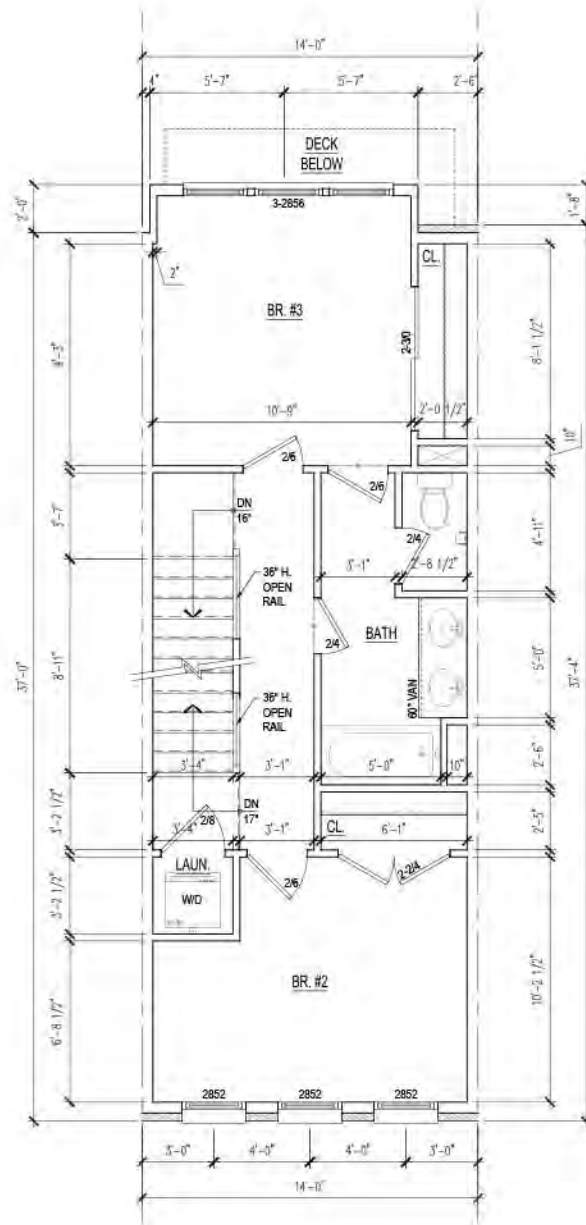
A.601



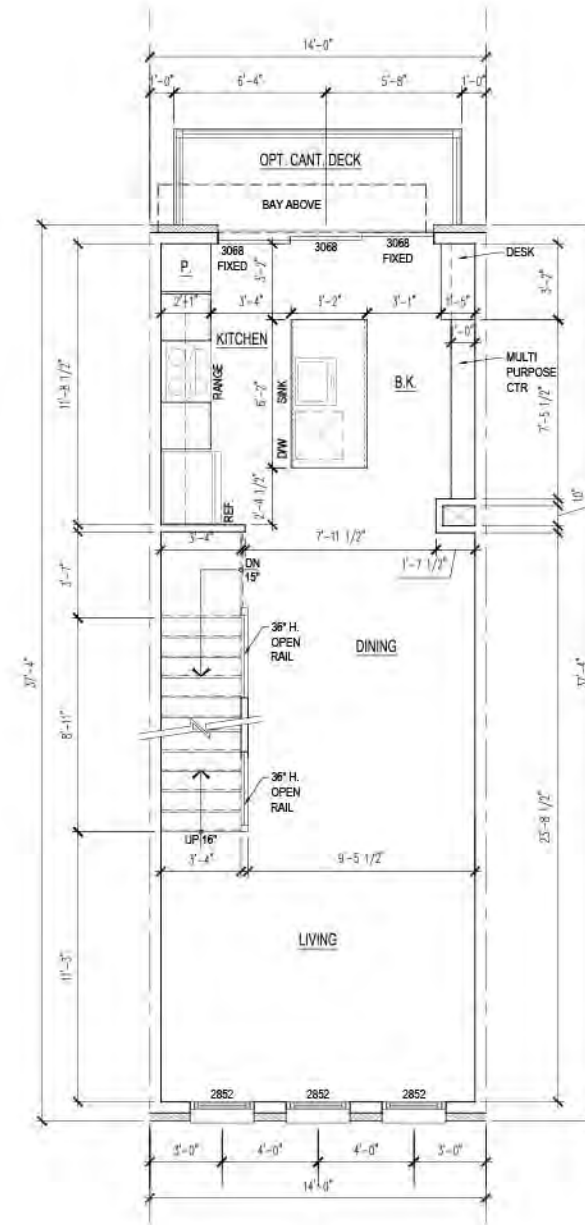
10/09/15
 MHL.009A.00D



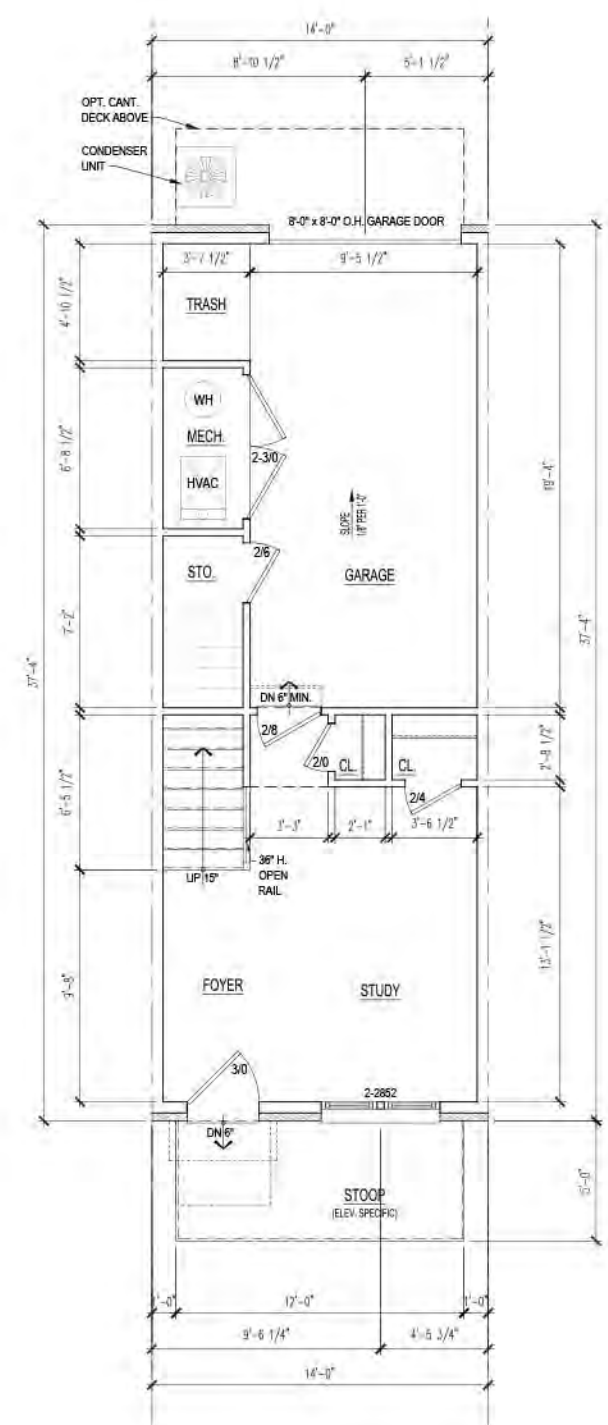
LOFT FLOOR PLAN



THIRD FLOOR PLAN



SECOND FLOOR PLAN



GROUND FLOOR PLAN

INTERIOR PLAN LAYOUTS ARE CONCEPTUAL AND FOR ILLUSTRATIVE PURPOSES; FINAL LAYOUTS MAY VARY.



8521 Leesburg Pike Suite 700 Vienna, VA 22182
P: 571.830.1800 | F: 571.830.1801 | www.lessarddesign.com

© 2015 Lessard Design Inc. expressly reserves its common law copyright and other property rights in these plans. These plans are not to be changed or copied in any form or matter whatsoever, nor are they to be assigned to any third party without the express written permission and consent of Lessard Design, Inc.

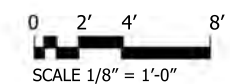
CONCEPTUAL FLOOR PLANS

BROOKLAND TOWNHOMES
Washington, DC

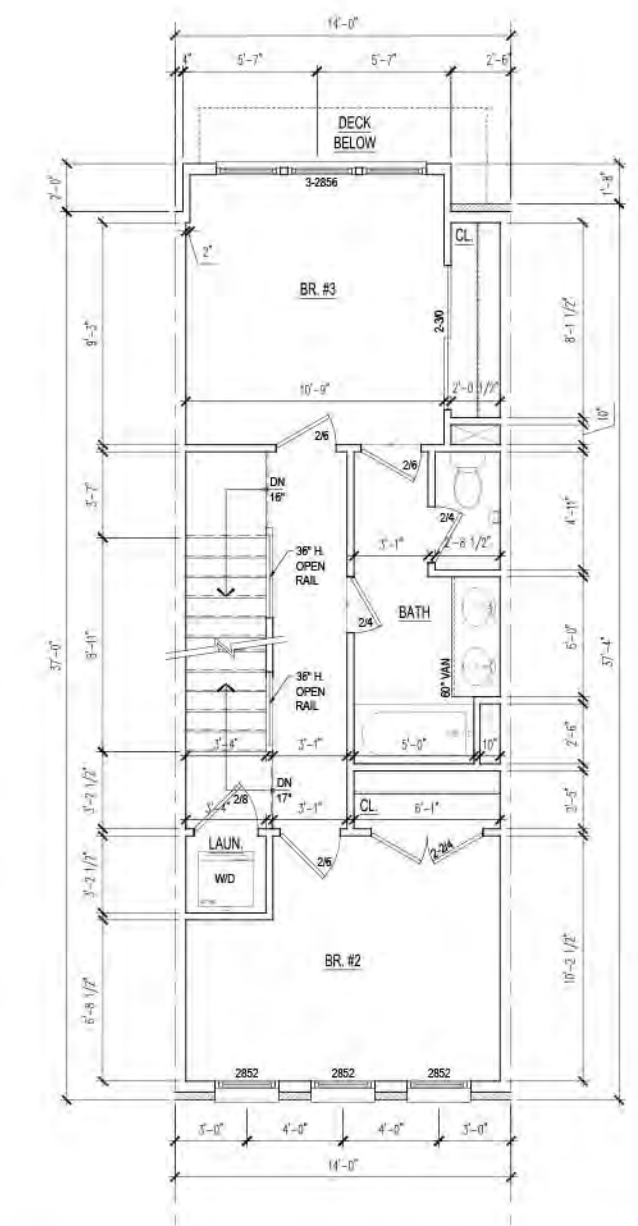
A.700

A.D.U. 14' X 37' UNIT
PUD APPLICATION

MADISON HOMES



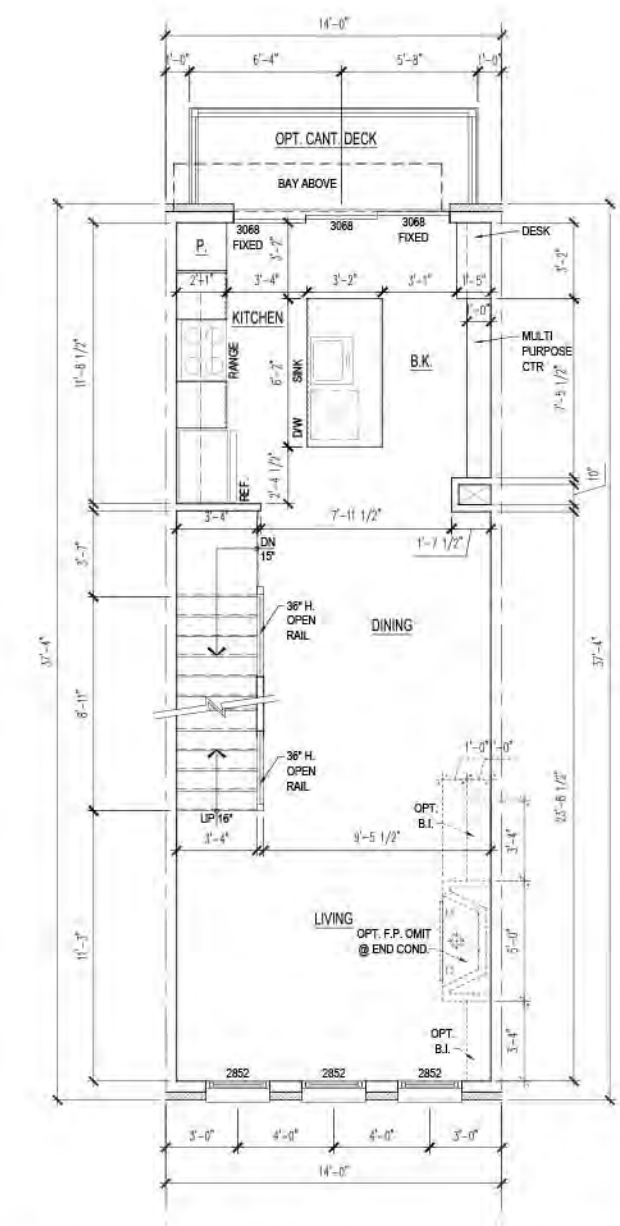
10/09/15
MHI.009A.00D



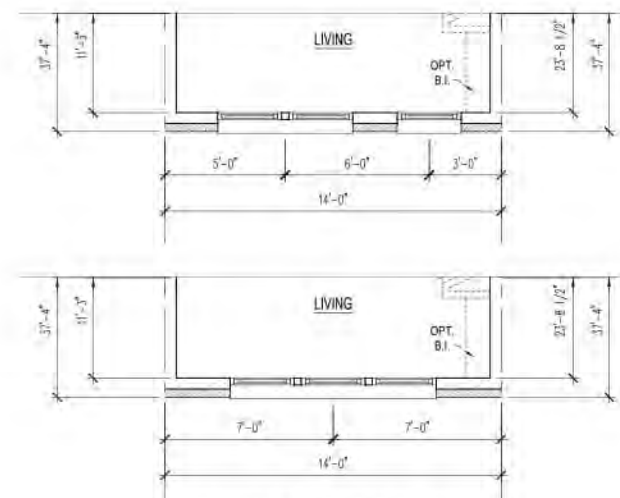
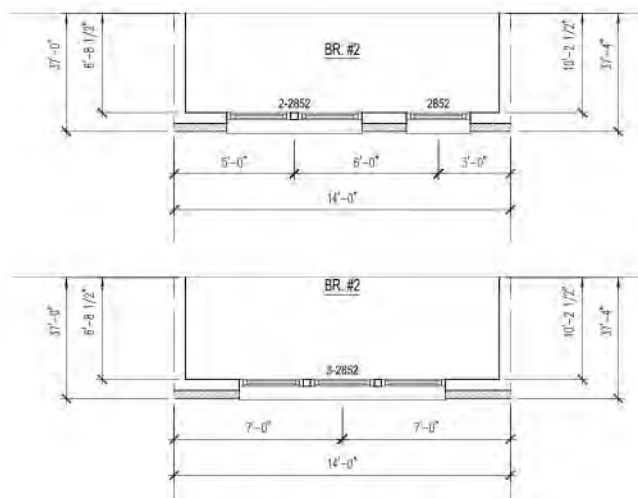
THIRD FLOOR PLAN



SECOND FLOOR PLAN



GROUND FLOOR PLAN



INTERIOR PLAN LAYOUTS ARE CONCEPTUAL AND FOR ILLUSTRATIVE PURPOSES; FINAL LAYOUTS MAY VARY.



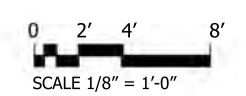
8521 Leesburg Pike Suite 700 Vienna, VA 22182
 P: 571.830.1800 | F: 571.830.1801 | www.lessarddesign.com

© 2015 Lessard Design Inc. expressly reserves its common law copyright and other property rights in these plans. These plans are not to be changed or copied in any form or matter whatsoever, nor are they to be assigned to any third party without the express written permission and consent of Lessard Design, Inc.

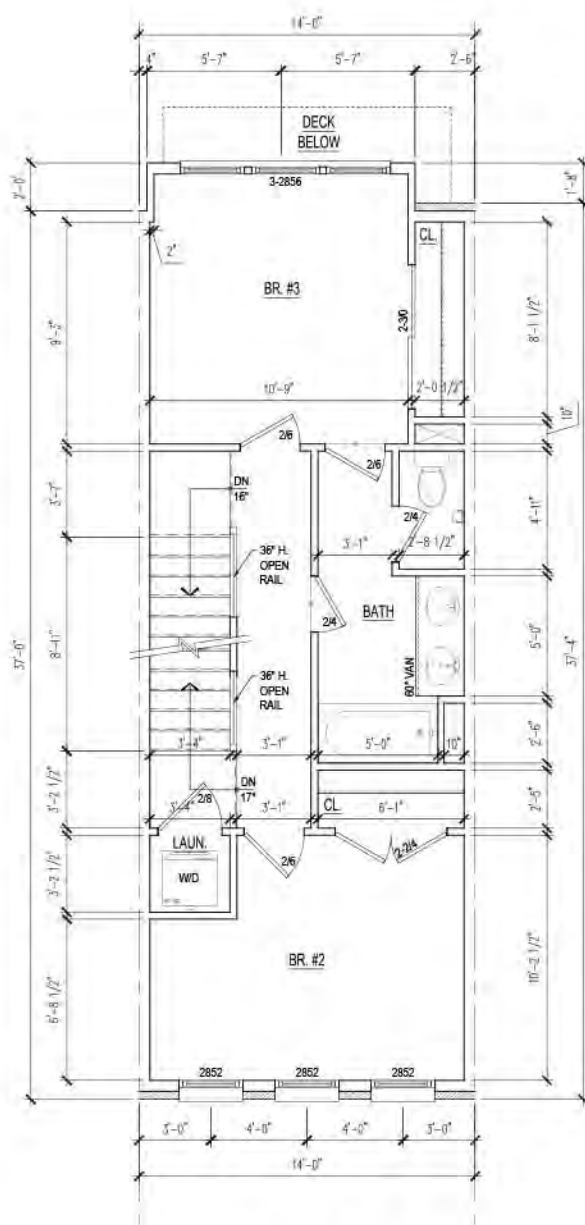
CONCEPTUAL FLOOR PLANS
 14' X 37' UNIT (ALT. END CONDITION)
 PUD APPLICATION

BROOKLAND TOWNHOMES
 Washington, DC
 MADISON HOMES

A.700A



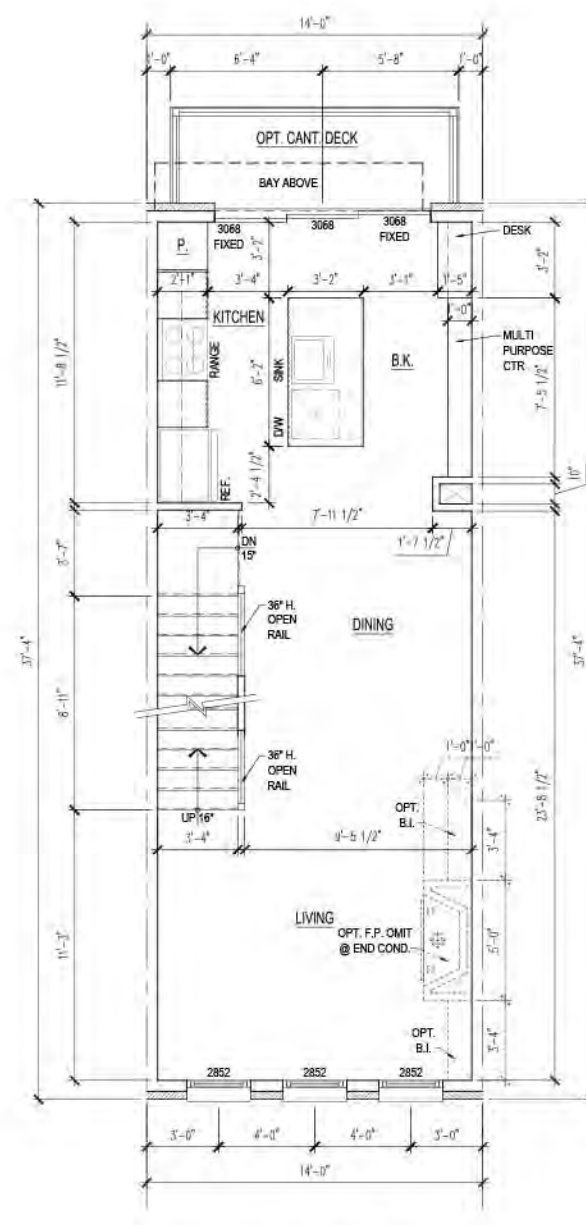
10/09/15
 MHI.009A.00D



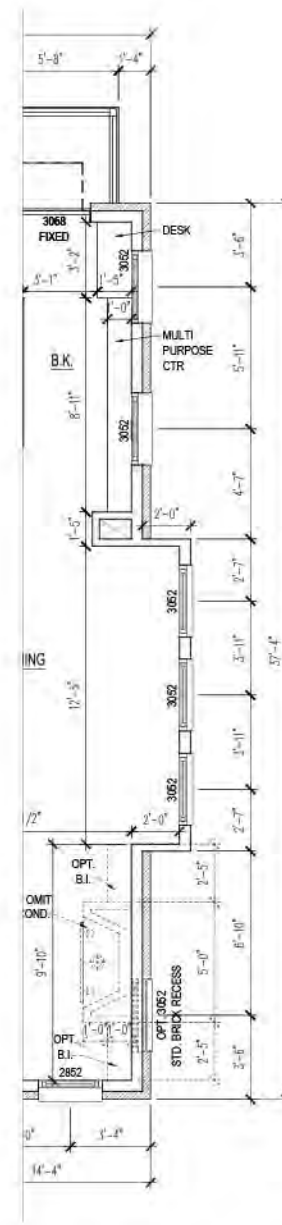
THIRD FLOOR PLAN



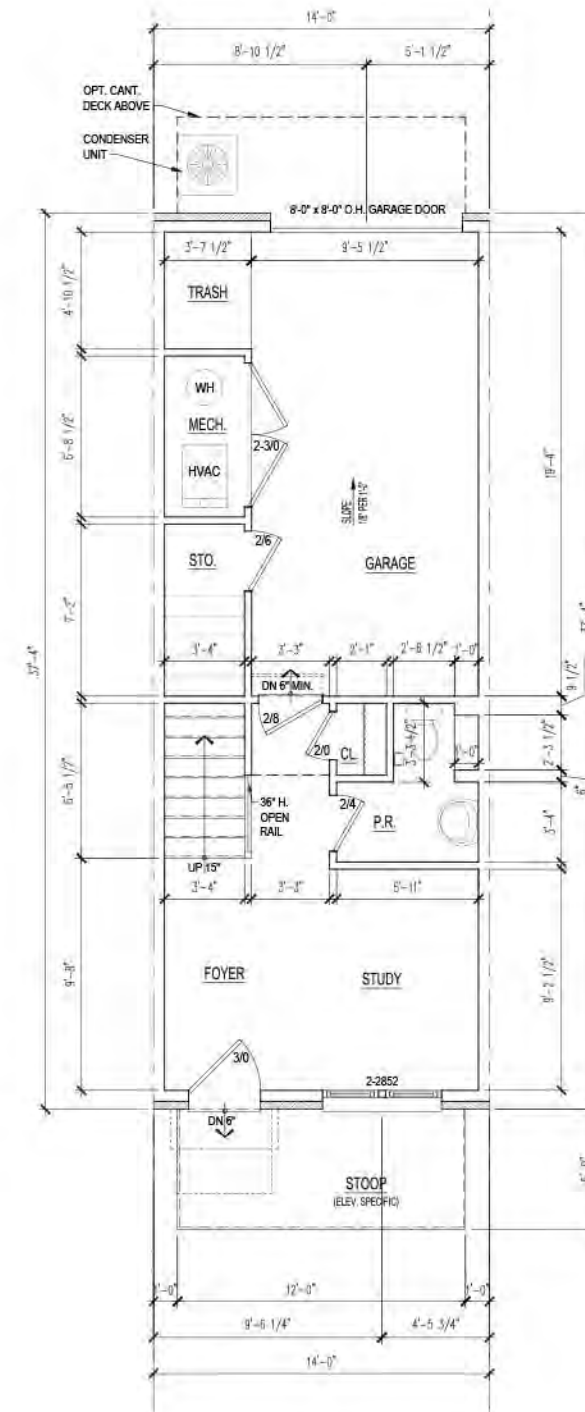
END CONDITION



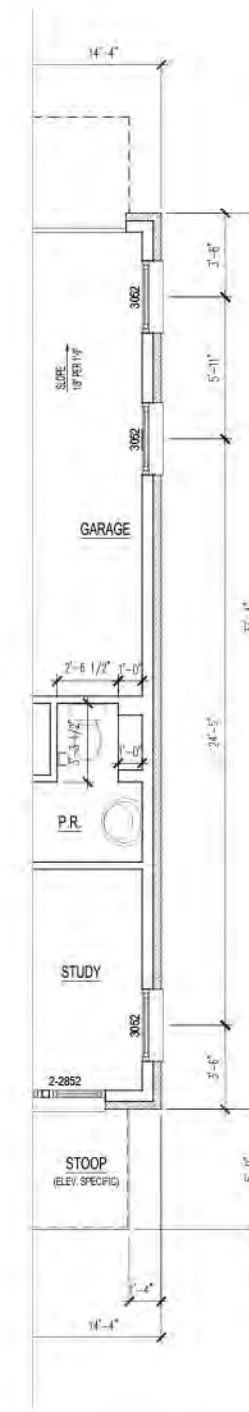
SECOND FLOOR PLAN



END CONDITION



GROUND FLOOR PLAN



END CONDITION

INTERIOR PLAN LAYOUTS ARE CONCEPTUAL AND FOR ILLUSTRATIVE PURPOSES; FINAL LAYOUTS MAY VARY.



8521 Leesburg Pike Suite 700 Vienna, VA 22182
 P: 571.830.1800 | F: 571.830.1801 | www.lessarddesign.com

© 2015 Lessard Design Inc. expressly reserves its common law copyright and other property rights in these plans. These plans are not to be changed or copied in any form or matter whatsoever, nor are they to be assigned to any third party without the express written permission and consent of Lessard Design, Inc.

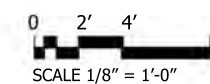
CONCEPTUAL FLOOR PLANS

STANDARD 14' X 37' UNIT
 PUD APPLICATION

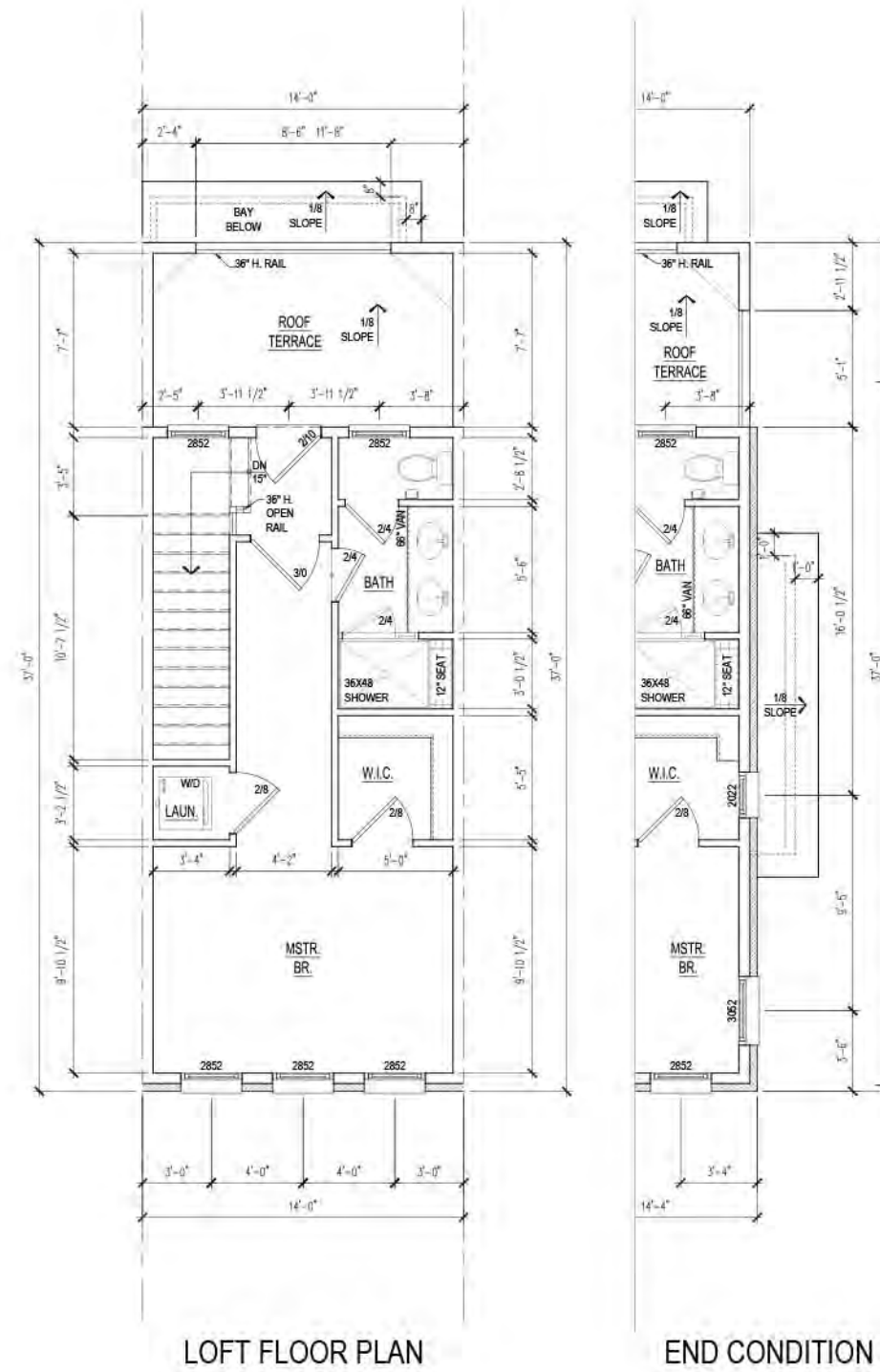
BROOKLAND TOWNHOMES
 Washington, DC

MADISON HOMES

A.701



10/09/15
 MHI.009A.00D



INTERIOR PLAN LAYOUTS ARE CONCEPTUAL AND FOR ILLUSTRATIVE PURPOSES; FINAL LAYOUTS MAY VARY.

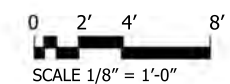
CONCEPTUAL FLOOR PLANS

BROOKLAND TOWNHOMES
Washington, DC

A.701A

STANDARD 14' X 37' UNIT
PUD APPLICATION

MADISON HOMES

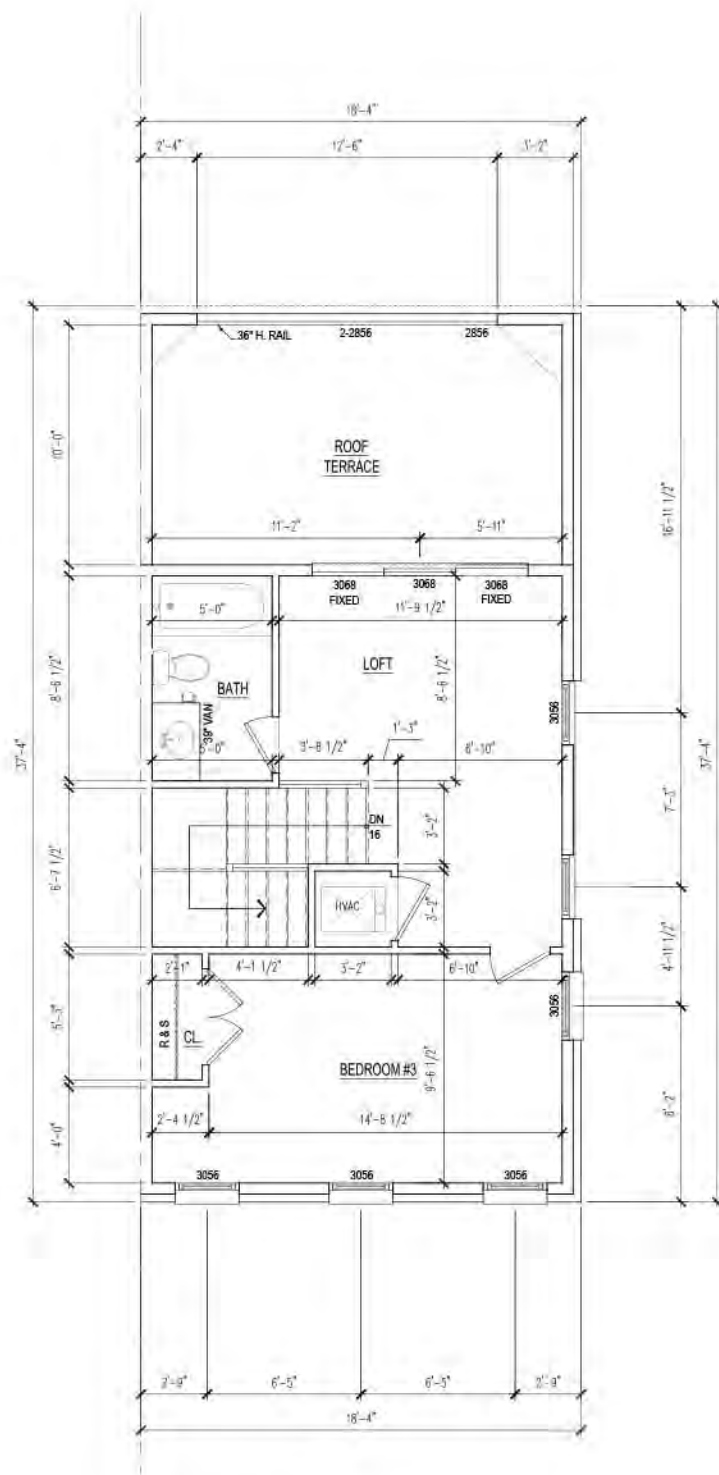


10/09/15
MHI.009A.00D

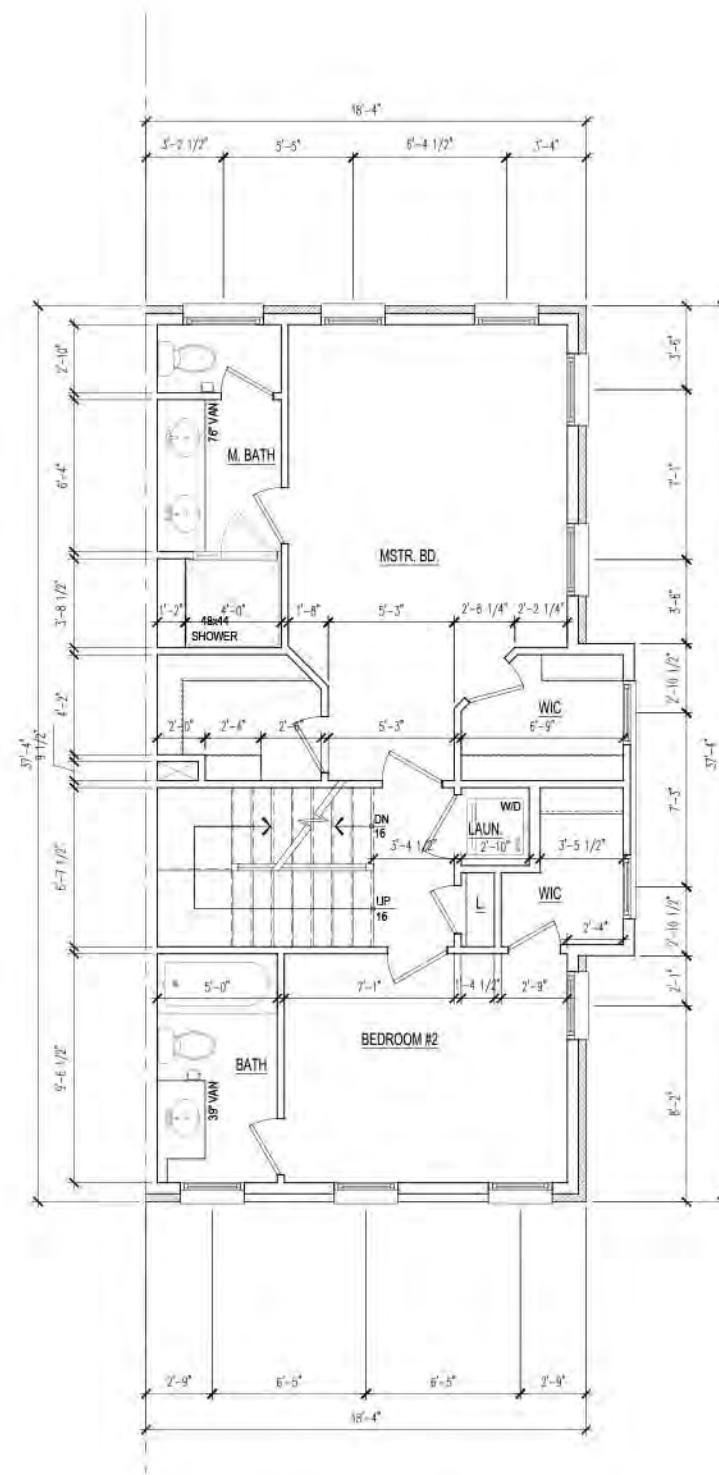


8521 Leesburg Pike Suite 700 Vienna, VA 22182
P: 571.830.1800 | F: 571.830.1801 | www.lessarddesign.com

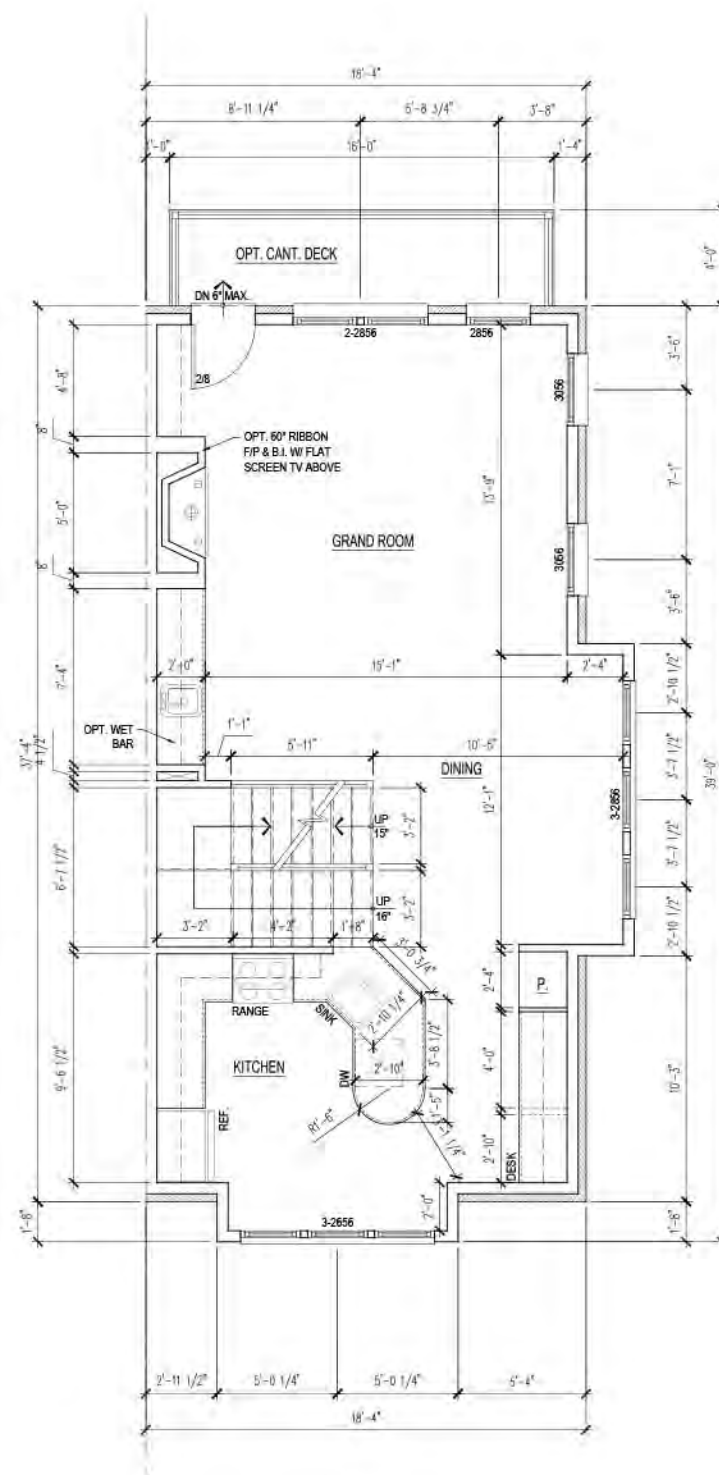
© 2015 Lessard Design Inc. expressly reserves its common law copyright and other property rights in these plans. These plans are not to be changed or copied in any form or matter whatsoever, nor are they to be assigned to any third party without the express written permission and consent of Lessard Design, Inc.



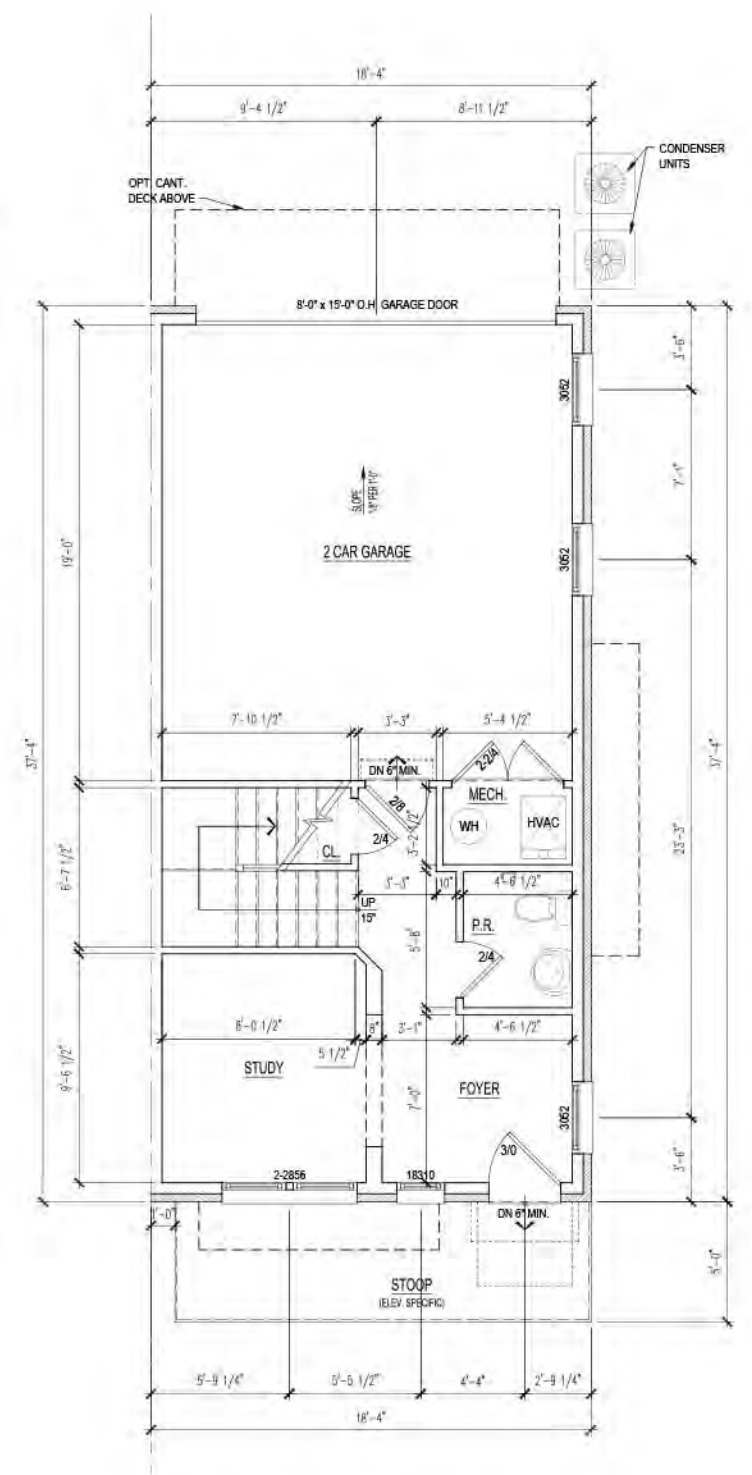
LOFT FLOOR PLAN



THIRD FLOOR PLAN



SECOND FLOOR PLAN



GROUND FLOOR PLAN

INTERIOR PLAN LAYOUTS ARE CONCEPTUAL AND FOR ILLUSTRATIVE PURPOSES; FINAL LAYOUTS MAY VARY.



8521 Leesburg Pike Suite 700 Vienna, VA 22182
 P: 571.830.1800 | F: 571.830.1801 | www.lessarddesign.com

© 2015 Lessard Design Inc. expressly reserves its common law copyright and other property rights in these plans. These plans are not to be changed or copied in any form or matter whatsoever, nor are they to be assigned to any third party without the express written permission and consent of Lessard Design, Inc.

CONCEPTUAL FLOOR PLANS

18' X 37' UNIT
 PUD APPLICATION

BROOKLAND TOWNHOMES
 Washington, DC

MADISON HOMES

A.702

10/09/15
 MHI.009A.00D

