

8521 Leesburg Pike Suite 700 Vienna, VA 22182  
 P: 571.830.1800 | F: 571.830.1801 | www.lessarddesign.com

© 2015 Lessard Design Inc. expressly reserves its common law copyright and other property rights in these plans. These plans are not to be changed or copied in any form or matter whatsoever, nor are they to be assigned to any third party without the express written permission and consent of Lessard Design, Inc.

## CONCEPTUAL PERSPECTIVE

AT REAR OF BUILDING ONE  
 (PROPOSED TREES HAVE BEEN REMOVED)

## BROOKLAND TOWNHOMES

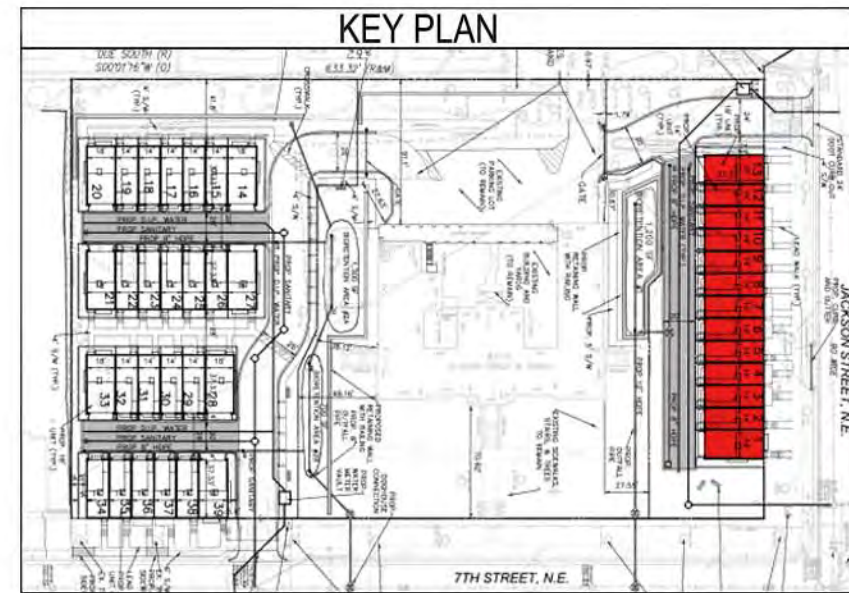
Washington, DC

MADISON HOMES

## A.101a

ZONING COMMISSION  
 District of Columbia  
 CASE NO. HD09A.00D  
 EXHIBIT NO. 26A2

NOTES: (1) FLEXIBILITY IS REQUESTED TO VARY THE FINAL SELECTION OF THE EXTERIOR MATERIALS WITHIN THE COLOR RANGES AND GENERAL MATERIAL TYPES PROPOSED, BASED ON AVAILABILITY AT THE TIME OF CONSTRUCTION WITHOUT REDUCING THE QUALITY OF MATERIALS. (2) FLEXIBILITY IS REQUESTED TO MAKE MINOR REFINEMENTS TO EXTERIOR DETAILS AND DIMENSIONS, INCLUDING SILLS, BASES, CORNICES, RAILINGS AND TRIM, AND ANY OTHER CHANGES TO COMPLY WITH THE BUILDING CODES OR THAT OTHERWISE NECESSARY TO OBTAIN FINAL BUILDING PERMIT.



LOT 01 18' UNIT    LOT 02 14' UNIT    LOT 03 14' UNIT    LOT 04 14' UNIT    LOT 05 14' A.D.U. UNIT    LOT 06 14' UNIT    LOT 07 14' UNIT    LOT 08 14' UNIT    LOT 09 14' UNIT    LOT 10 14' UNIT    LOT 11 14' UNIT    LOT 12 14' A.D.U. UNIT    LOT 13 18' UNIT

SEE SHEET C.02 FOR BUILDING HEIGHTS FROM AVERAGE FINISHED GRADE CALCULATIONS



8521 Leesburg Pike Suite 700 Vienna, VA 22182  
P: 571.830.1800 | F: 571.830.1801 | www.lessarddesign.com

© 2015 Lessard Design Inc. expressly reserves its common law copyright and other property rights in these plans. These plans are not to be changed or copied in any form or matter whatsoever, nor are they to be assigned to any third party without the express written permission and consent of Lessard Design, Inc.

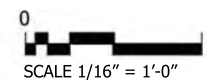
## CONCEPTUAL ELEVATIONS

BUILDING 1 - LOTS 1-13  
PUD APPLICATION

**BROOKLAND TOWNHOMES**  
Washington, DC

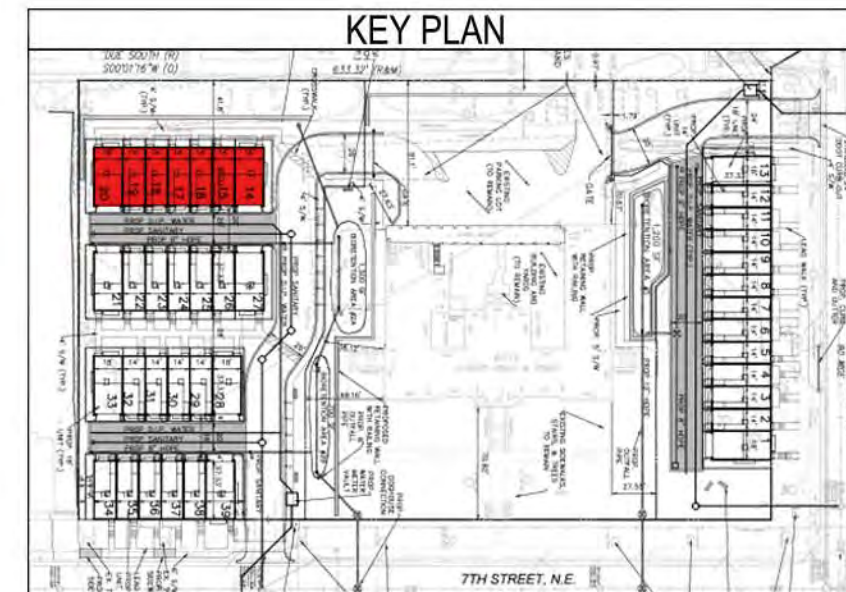
MADISON HOMES

**A.200**



10/09/15  
MHI.009A.00D

NOTES: (1) FLEXIBILITY IS REQUESTED TO VARY THE FINAL SELECTION OF THE EXTERIOR MATERIALS WITHIN THE COLOR RANGES AND GENERAL MATERIAL TYPES PROPOSED, BASED ON AVAILABILITY AT THE TIME OF CONSTRUCTION WITHOUT REDUCING THE QUALITY OF MATERIALS. (2) FLEXIBILITY IS REQUESTED TO MAKE MINOR REFINEMENTS TO EXTERIOR DETAILS AND DIMENSIONS, INCLUDING SILLS, BASES, CORNICES, RAILINGS AND TRIM, AND ANY OTHER CHANGES TO COMPLY WITH THE BUILDING CODES OR THAT OTHERWISE NECESSARY TO OBTAIN FINAL BUILDING PERMIT.



SEE SHEET C.02 FOR BUILDING HEIGHTS FROM AVERAGE FINISHED GRADE CALCULATIONS



8521 Leesburg Pike Suite 700 Vienna, VA 22182  
P: 571.830.1800 | F: 571.830.1801 | www.lessarddesign.com

© 2015 Lessard Design Inc. expressly reserves its common law copyright and other property rights in these plans. These plans are not to be changed or copied in any form or matter whatsoever, nor are they to be assigned to any third party without the express written permission and consent of Lessard Design, Inc.

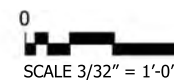
### CONCEPTUAL ELEVATIONS

**BROOKLAND TOWNHOMES**  
Washington, DC

**A.201**

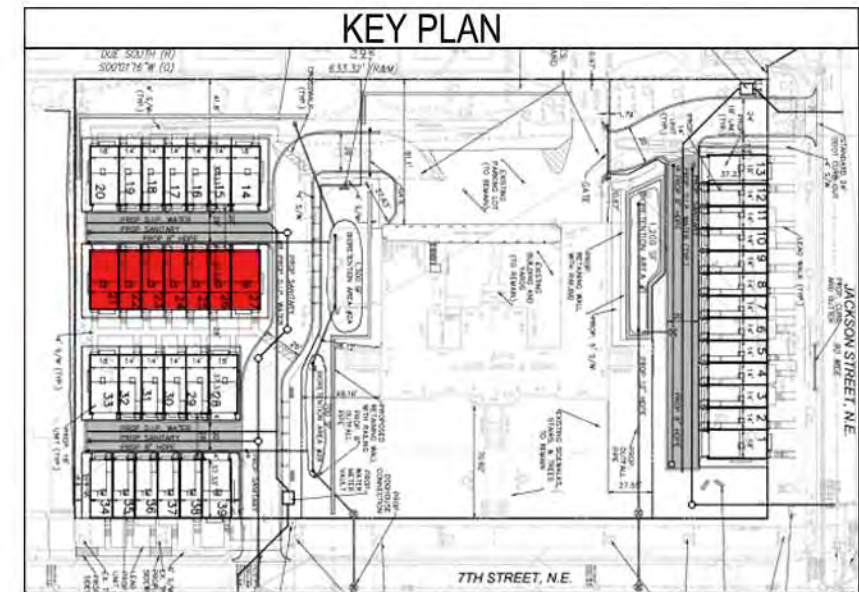
BUILDING 2 - LOTS 14-20  
PUD APPLICATION

MADISON HOMES



10/09/15  
MHI.009A.00D

NOTES: (1) FLEXIBILITY IS REQUESTED TO VARY THE FINAL SELECTION OF THE EXTERIOR MATERIALS WITHIN THE COLOR RANGES AND GENERAL MATERIAL TYPES PROPOSED, BASED ON AVAILABILITY AT THE TIME OF CONSTRUCTION WITHOUT REDUCING THE QUALITY OF MATERIALS. (2) FLEXIBILITY IS REQUESTED TO MAKE MINOR REFINEMENTS TO EXTERIOR DETAILS AND DIMENSIONS, INCLUDING SILLS, BASES, CORNICES, RAILINGS AND TRIM, AND ANY OTHER CHANGES TO COMPLY WITH THE BUILDING CODES OR THAT OTHERWISE NECESSARY TO OBTAIN FINAL BUILDING PERMIT.



SEE SHEET C.02 FOR BUILDING HEIGHTS FROM AVERAGE FINISHED GRADE CALCULATIONS



8521 Leesburg Pike Suite 700 Vienna, VA 22182  
P: 571.830.1800 | F: 571.830.1801 | www.lessarddesign.com

© 2015 Lessard Design Inc. expressly reserves its common law copyright and other property rights in these plans. These plans are not to be changed or copied in any form or matter whatsoever, nor are they to be assigned to any third party without the express written permission and consent of Lessard Design, Inc.

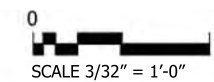
## CONCEPTUAL ELEVATIONS

BUILDING 3 - LOTS 21-27  
PUD APPLICATION

**BROOKLAND TOWNHOMES**  
Washington, DC

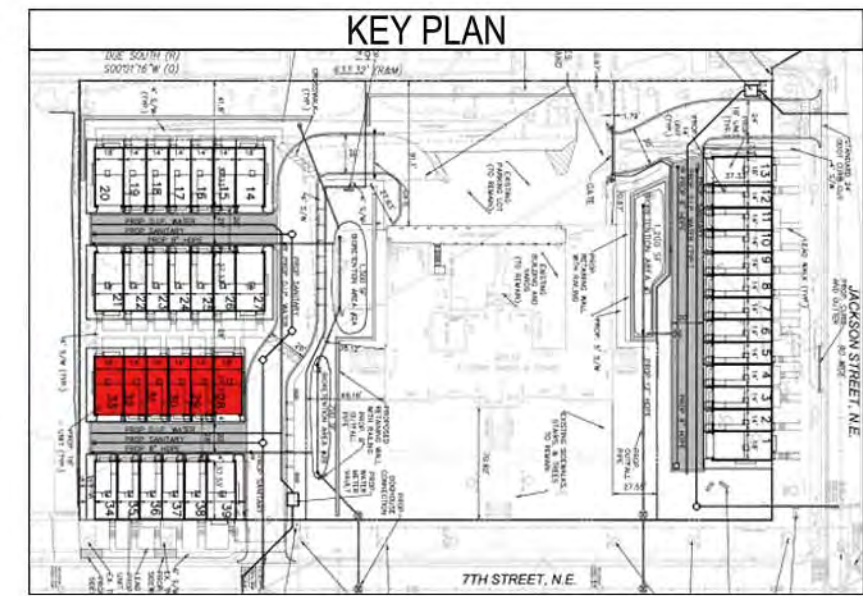
MADISON HOMES

**A.202**



10/09/15  
MHI.009A.00D

NOTES: (1) FLEXIBILITY IS REQUESTED TO VARY THE FINAL SELECTION OF THE EXTERIOR MATERIALS WITHIN THE COLOR RANGES AND GENERAL MATERIAL TYPES PROPOSED, BASED ON AVAILABILITY AT THE TIME OF CONSTRUCTION WITHOUT REDUCING THE QUALITY OF MATERIALS. (2) FLEXIBILITY IS REQUESTED TO MAKE MINOR REFINEMENTS TO EXTERIOR DETAILS AND DIMENSIONS, INCLUDING SILLS, BASES, CORNICES, RAILINGS AND TRIM, AND ANY OTHER CHANGES TO COMPLY WITH THE BUILDING CODES OR THAT OTHERWISE NECESSARY TO OBTAIN FINAL BUILDING PERMIT.



SEE SHEET C.02 FOR BUILDING HEIGHTS FROM AVERAGE FINISHED GRADE CALCULATIONS



8521 Leesburg Pike Suite 700 Vienna, VA 22182  
P: 571.830.1800 | F: 571.830.1801 | www.lessarddesign.com

© 2015 Lessard Design Inc. expressly reserves its common law copyright and other property rights in these plans. These plans are not to be changed or copied in any form or matter whatsoever, nor are they to be assigned to any third party without the express written permission and consent of Lessard Design, Inc.

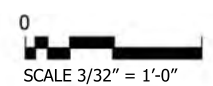
**CONCEPTUAL ELEVATIONS**

**BROOKLAND TOWNHOMES**  
Washington, DC

**A.203**

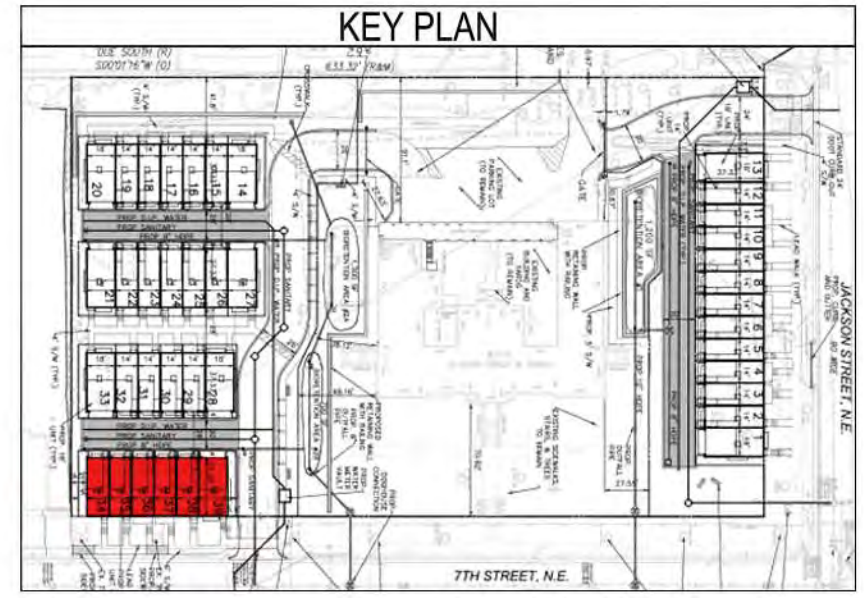
**BUILDING 4 - LOTS 28-33**  
PUD APPLICATION

MADISON HOMES



10/09/15  
MHI.009A.00D

NOTES: (1) FLEXIBILITY IS REQUESTED TO VARY THE FINAL SELECTION OF THE EXTERIOR MATERIALS WITHIN THE COLOR RANGES AND GENERAL MATERIAL TYPES PROPOSED, BASED ON AVAILABILITY AT THE TIME OF CONSTRUCTION WITHOUT REDUCING THE QUALITY OF MATERIALS. (2) FLEXIBILITY IS REQUESTED TO MAKE MINOR REFINEMENTS TO EXTERIOR DETAILS AND DIMENSIONS, INCLUDING SILLS, BASES, CORNICES, RAILINGS AND TRIM, AND ANY OTHER CHANGES TO COMPLY WITH THE BUILDING CODES OR THAT OTHERWISE NECESSARY TO OBTAIN FINAL BUILDING PERMIT.



LOT 34 14' UNIT      LOT 35 14' UNIT      LOT 36 14' UNIT      LOT 37 14' UNIT      LOT 38 14' UNIT      LOT 39 18' UNIT

SEE SHEET C.02 FOR BUILDING HEIGHTS FROM AVERAGE FINISHED GRADE CALCULATIONS



8521 Leesburg Pike Suite 700 Vienna, VA 22182  
P: 571.830.1800 | F: 571.830.1801 | www.lessarddesign.com

© 2015 Lessard Design Inc. expressly reserves its common law copyright and other property rights in these plans. These plans are not to be changed or copied in any form or matter whatsoever, nor are they to be assigned to any third party without the express written permission and consent of Lessard Design, Inc.

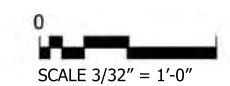
**CONCEPTUAL ELEVATIONS**

**BROOKLAND TOWNHOMES**  
Washington, DC

**A.204**

BUILDING 5 - LOTS 34-39  
PUD APPLICATION

MADISON HOMES



10/09/15  
MHI.009A.00D

NOTES: (1) FLEXIBILITY IS REQUESTED TO VARY THE FINAL SELECTION OF THE EXTERIOR MATERIALS WITHIN THE COLOR RANGES AND GENERAL MATERIAL TYPES PROPOSED, BASED ON AVAILABILITY AT THE TIME OF CONSTRUCTION WITHOUT REDUCING THE QUALITY OF MATERIALS. (2) FLEXIBILITY IS REQUESTED TO MAKE MINOR REFINEMENTS TO EXTERIOR DETAILS AND DIMENSIONS, INCLUDING SILLS, BASES, CORNICES, RAILINGS AND TRIM, AND ANY OTHER CHANGES TO COMPLY WITH THE BUILDING CODES OR THAT OTHERWISE NECESSARY TO OBTAIN FINAL BUILDING PERMIT.



NOTE: COLOR SHOWN FOR REFERENCE ONLY. SEE STREETScape FOR DESIGN INTENT.



8521 Leesburg Pike Suite 700 Vienna, VA 22182  
 P: 571.830.1800 | F: 571.830.1801 | www.lessarddesign.com

© 2015 Lessard Design Inc. expressly reserves its common law copyright and other property rights in these plans. These plans are not to be changed or copied in any form or matter whatsoever, nor are they to be assigned to any third party without the express written permission and consent of Lessard Design, Inc.

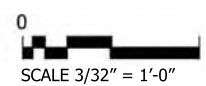
**CONCEPTUAL UNIT ELEVATIONS**

TYPICAL FRONT AND SIDE ELEVATIONS  
 PUD APPLICATION

**BROOKLAND TOWNHOMES**  
 Washington, DC

MADISON HOMES

**A.205**



10/09/15  
 MHI.009A.00D

NOTES: (1) FLEXIBILITY IS REQUESTED TO VARY THE FINAL SELECTION OF THE EXTERIOR MATERIALS WITHIN THE COLOR RANGES AND GENERAL MATERIAL TYPES PROPOSED, BASED ON AVAILABILITY AT THE TIME OF CONSTRUCTION WITHOUT REDUCING THE QUALITY OF MATERIALS. (2) FLEXIBILITY IS REQUESTED TO MAKE MINOR REFINEMENTS TO EXTERIOR DETAILS AND DIMENSIONS, INCLUDING SILLS, BASES, CORNICES, RAILINGS AND TRIM, AND ANY OTHER CHANGES TO COMPLY WITH THE BUILDING CODES OR THAT OTHERWISE NECESSARY TO OBTAIN FINAL BUILDING PERMIT.

NOTE: WINDOW LITE PATTERNS TO MATCH FRONT ELEVATION



18' UNIT REAR ELEVATION



14' UNIT REAR ELEVATION

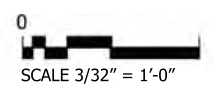
**CONCEPTUAL UNIT ELEVATIONS**

**BROOKLAND TOWNHOMES**  
Washington, DC

**A.206**

CONCEPTUAL REAR ELEVATIONS  
PUD APPLICATION

MADISON HOMES



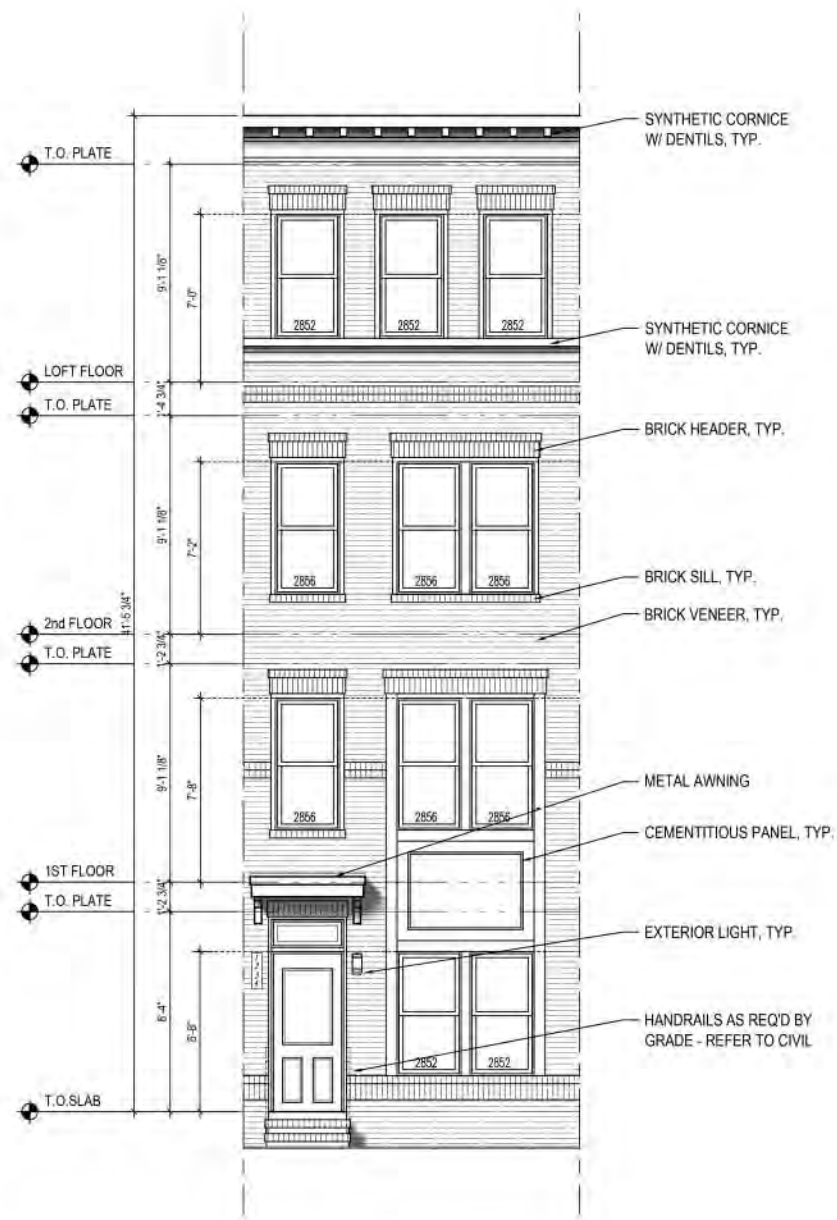
10/09/15  
MHI.009A.00D



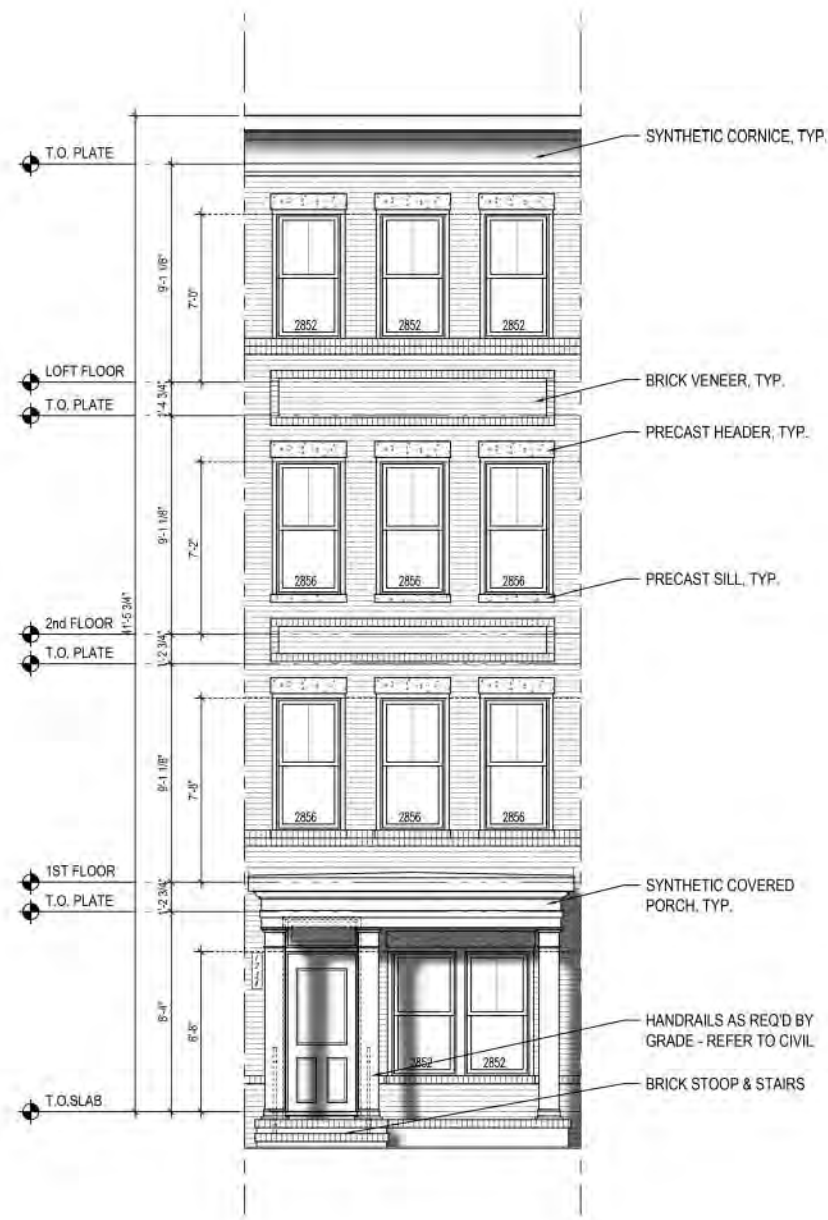
8521 Leesburg Pike Suite 700 Vienna, VA 22182  
P: 571.830.1800 | F: 571.830.1801 | www.lessarddesign.com

© 2015 Lessard Design Inc. expressly reserves its common law copyright and other property rights in these plans. These plans are not to be changed or copied in any form or matter whatsoever, nor are they to be assigned to any third party without the express written permission and consent of Lessard Design, Inc.

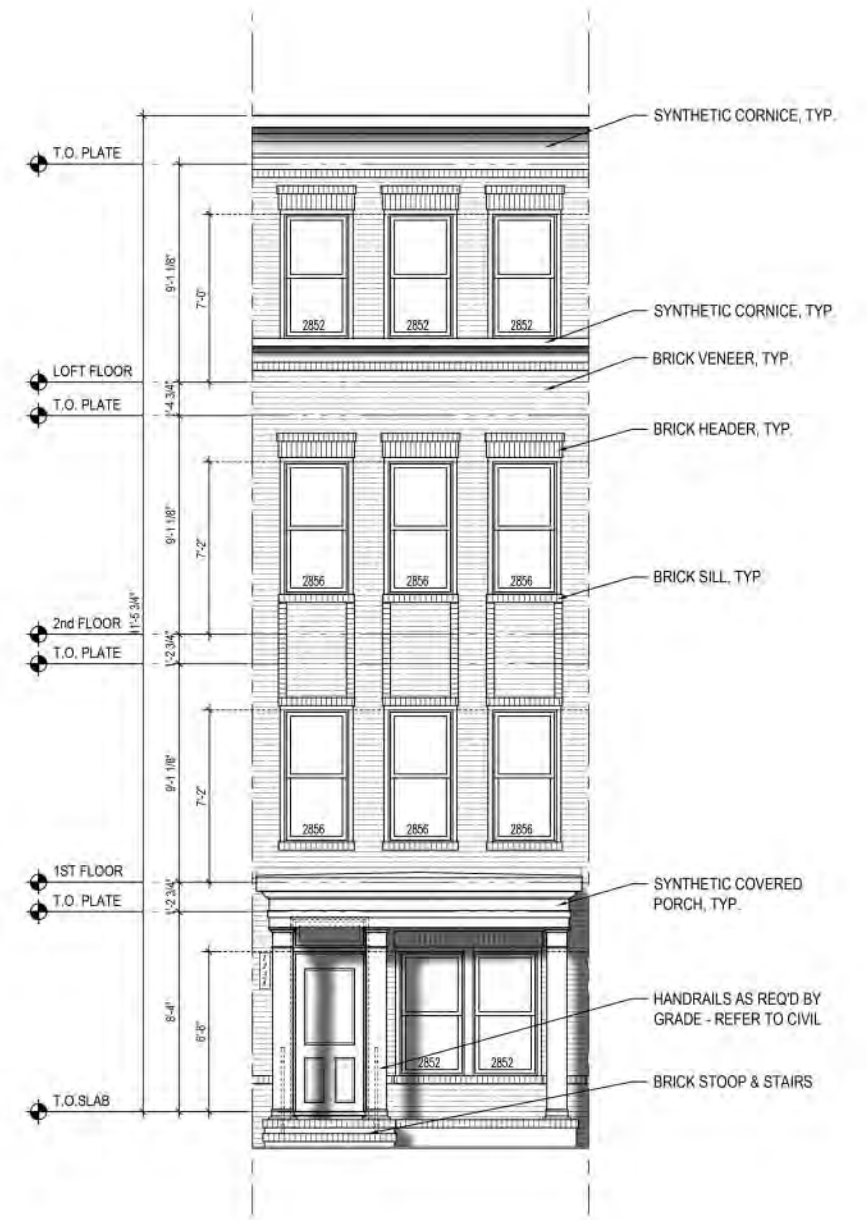




**ELEV. #3**



**ELEV. #2**



**ELEV. #1**

**14' UNIT ELEVATIONS**

**BROOKLAND TOWNHOMES**  
Washington, DC

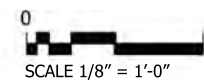
**A.300**



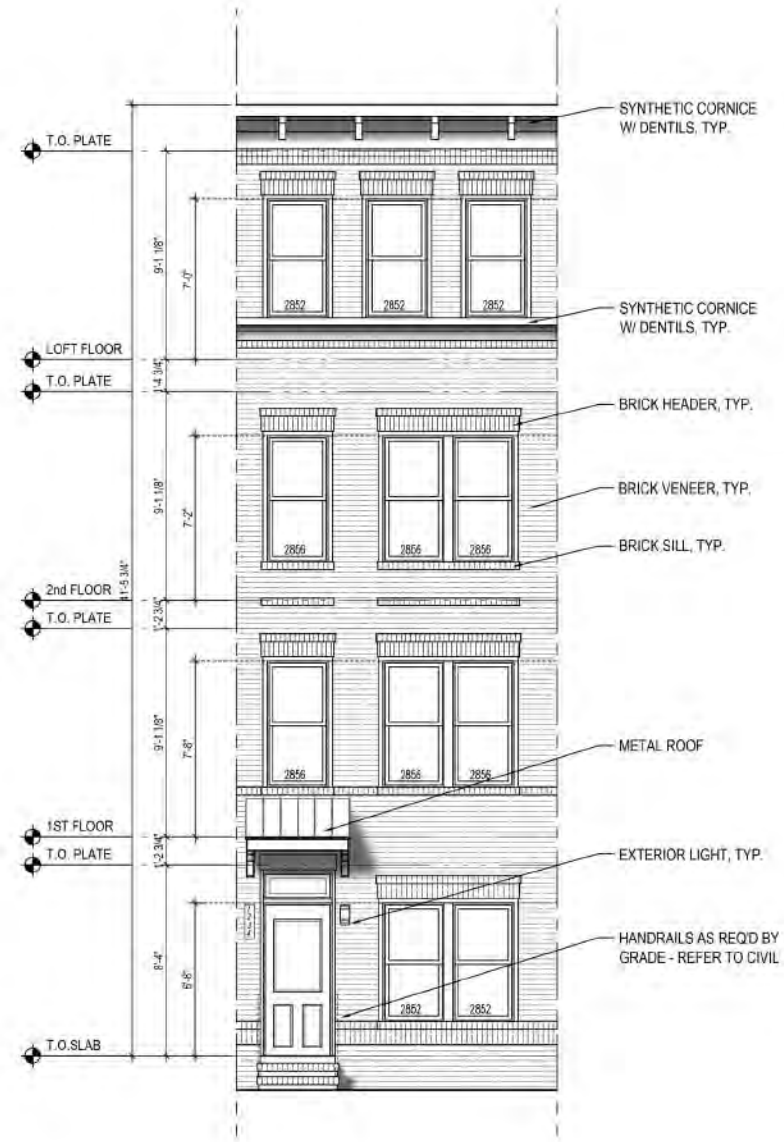
8521 Leesburg Pike Suite 700 Vienna, VA 22182  
P: 571.830.1800 | F: 571.830.1801 | www.lessarddesign.com

© 2015 Lessard Design Inc. expressly reserves its common law copyright and other property rights in these plans. These plans are not to be changed or copied in any form or matter whatsoever, nor are they to be assigned to any third party without the express written permission and consent of Lessard Design, Inc.

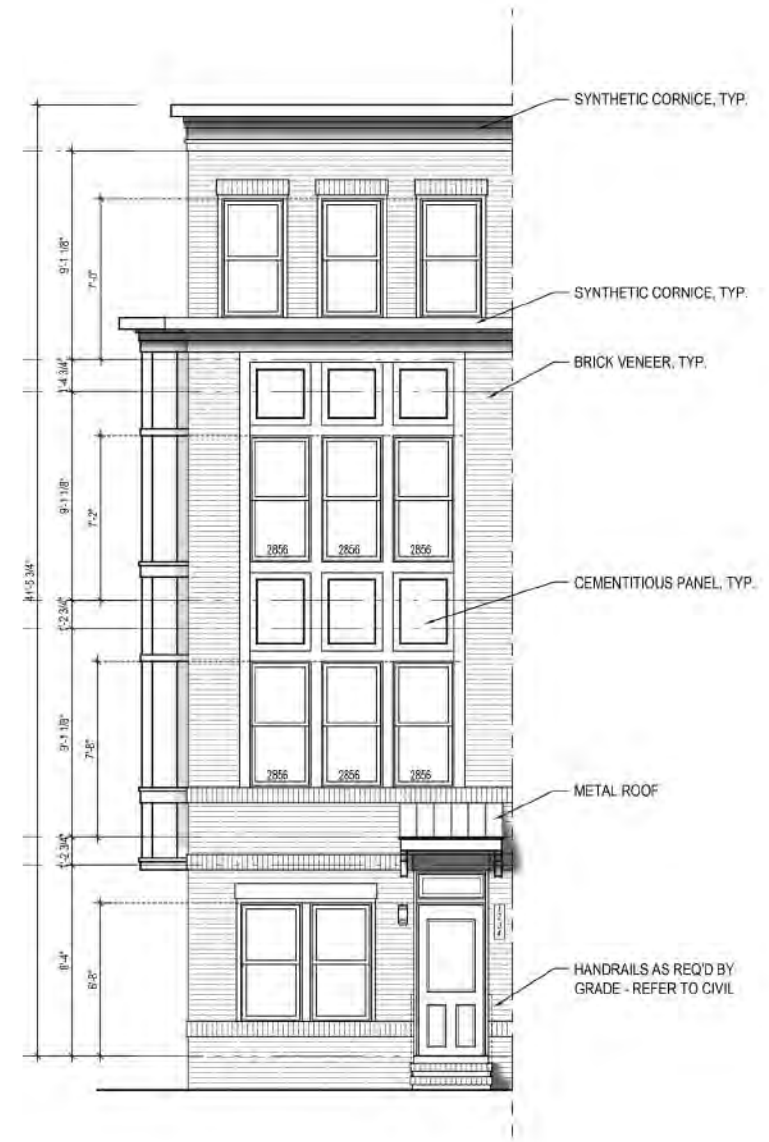
MADISON HOMES



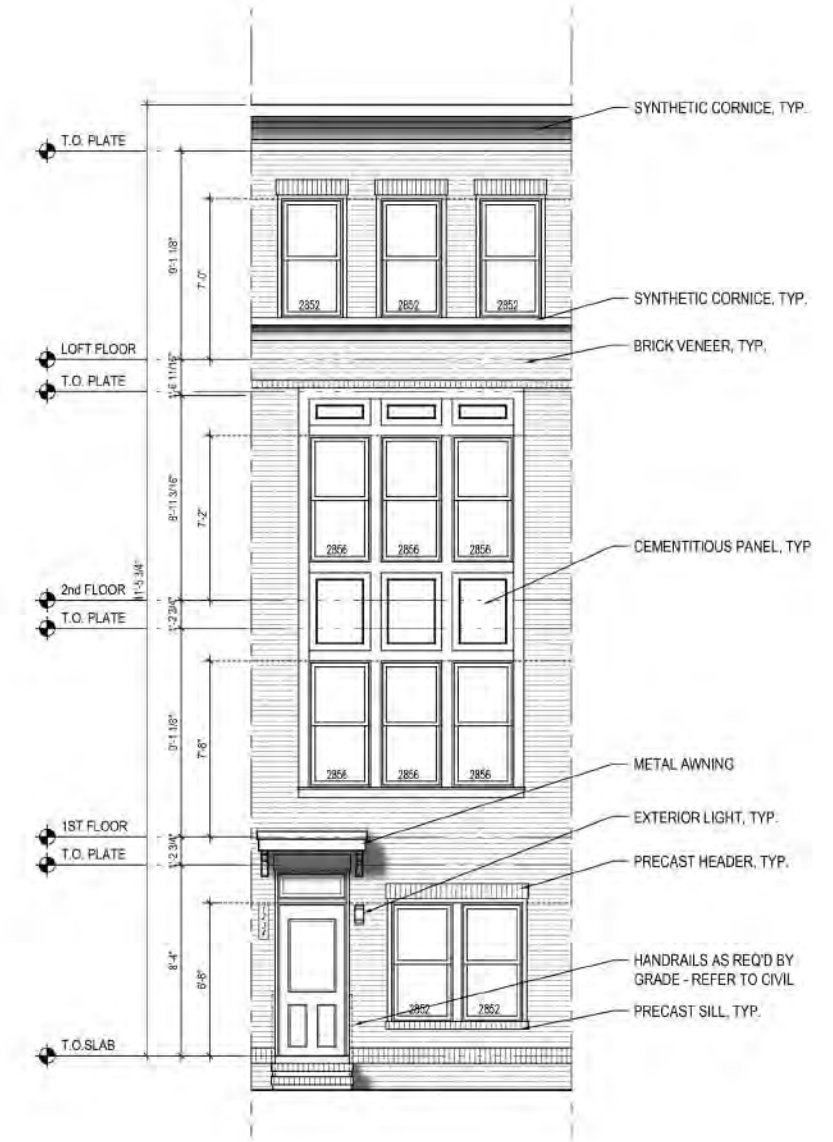
10/09/15  
MHI.009A.00D



**ELEV. #5**



**ELEV. #4 - END**



**ELEV. #4**

**14' UNIT ELEVATIONS**

**BROOKLAND TOWNHOMES**  
Washington, DC

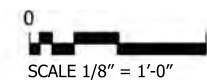
MADISON HOMES

**A.301**



8521 Leesburg Pike Suite 700 Vienna, VA 22182  
P: 571.830.1800 | F: 571.830.1801 | www.lessarddesign.com

© 2015 Lessard Design Inc. expressly reserves its common law copyright and other property rights in these plans. These plans are not to be changed or copied in any form or matter whatsoever, nor are they to be assigned to any third party without the express written permission and consent of Lessard Design, Inc.



10/09/15  
MHI.009A.00D



ELEV. #4 - END



8521 Leesburg Pike Suite 700 Vienna, VA 22182  
 P: 571.830.1800 | F: 571.830.1801 | www.lessarddesign.com

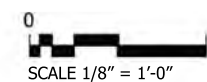
© 2015 Lessard Design Inc. expressly reserves its common law copyright and other property rights in these plans. These plans are not to be changed or copied in any form or matter whatsoever, nor are they to be assigned to any third party without the express written permission and consent of Lessard Design, Inc.

**14' UNIT ELEVATIONS**

**BROOKLAND TOWNHOMES**  
 Washington, DC

MADISON HOMES

**A.302**



10/09/15  
 MHI.009A.00D



**18' ELEV. END**



**18' ELEV. END**

**18' UNIT ELEVATIONS**

**BROOKLAND TOWNHOMES**  
Washington, DC

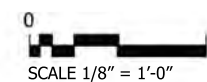
**A.303**



8521 Leesburg Pike Suite 700 Vienna, VA 22182  
P: 571.830.1800 | F: 571.830.1801 | www.lessarddesign.com

© 2015 Lessard Design Inc. expressly reserves its common law copyright and other property rights in these plans. These plans are not to be changed or copied in any form or matter whatsoever, nor are they to be assigned to any third party without the express written permission and consent of Lessard Design, Inc.

MADISON HOMES



10/09/15  
MHI.009A.00D