



**18' ELEV. END**



**18' ELEV. END**

**18' UNIT ELEVATIONS**

**BROOKLAND TOWNHOMES**  
Washington, DC

**A.303**



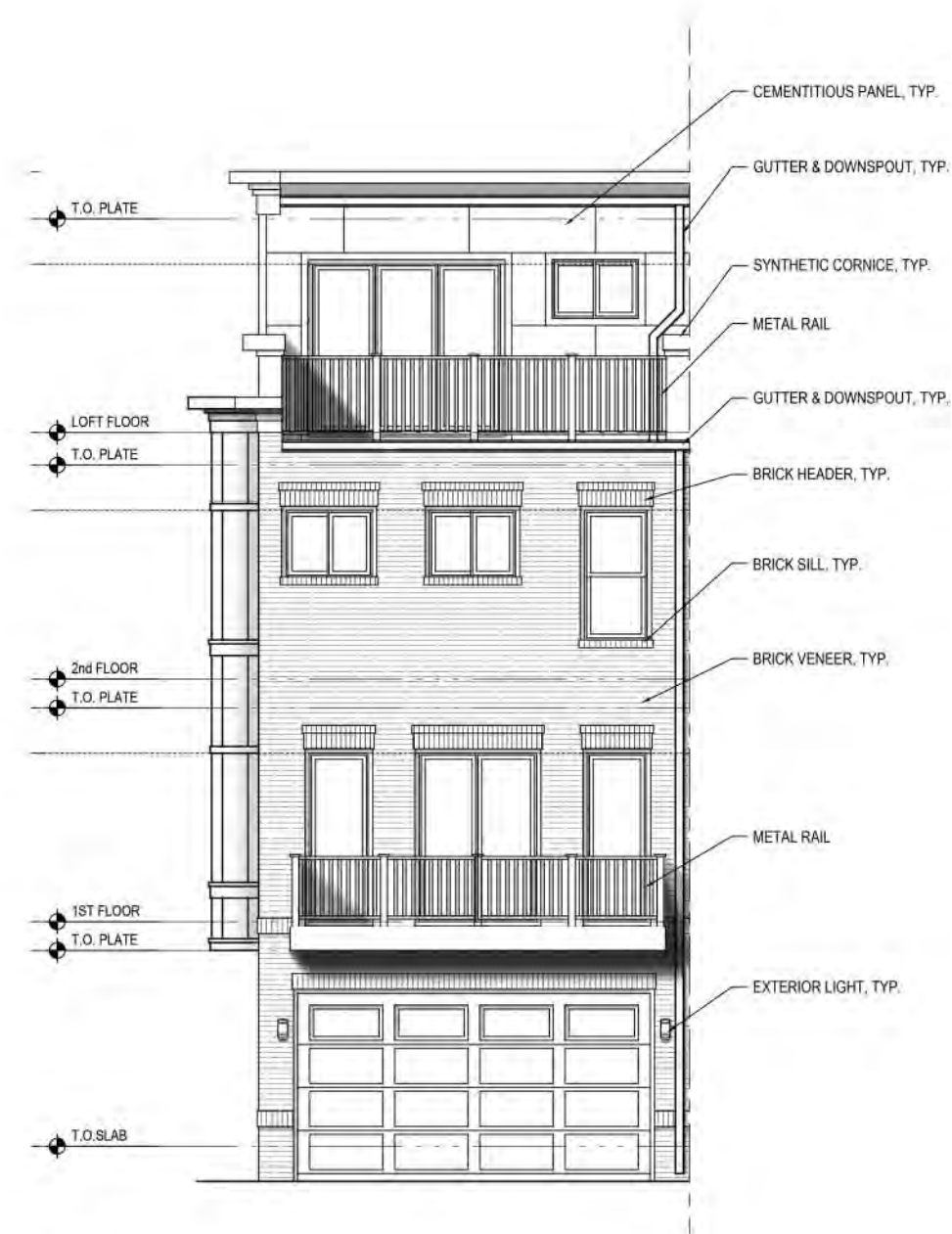
8521 Leesburg Pike Suite 700 Vienna, VA 22182  
P: 571.830.1800 | F: 571.830.1801 | www.lessarddesign.com

© 2015 Lessard Design Inc. expressly reserves its common law copyright and other property rights in these plans. These plans are not to be changed or copied in any form or matter whatsoever, nor are they to be assigned to any third party without the express written permission and consent of Lessard Design, Inc.

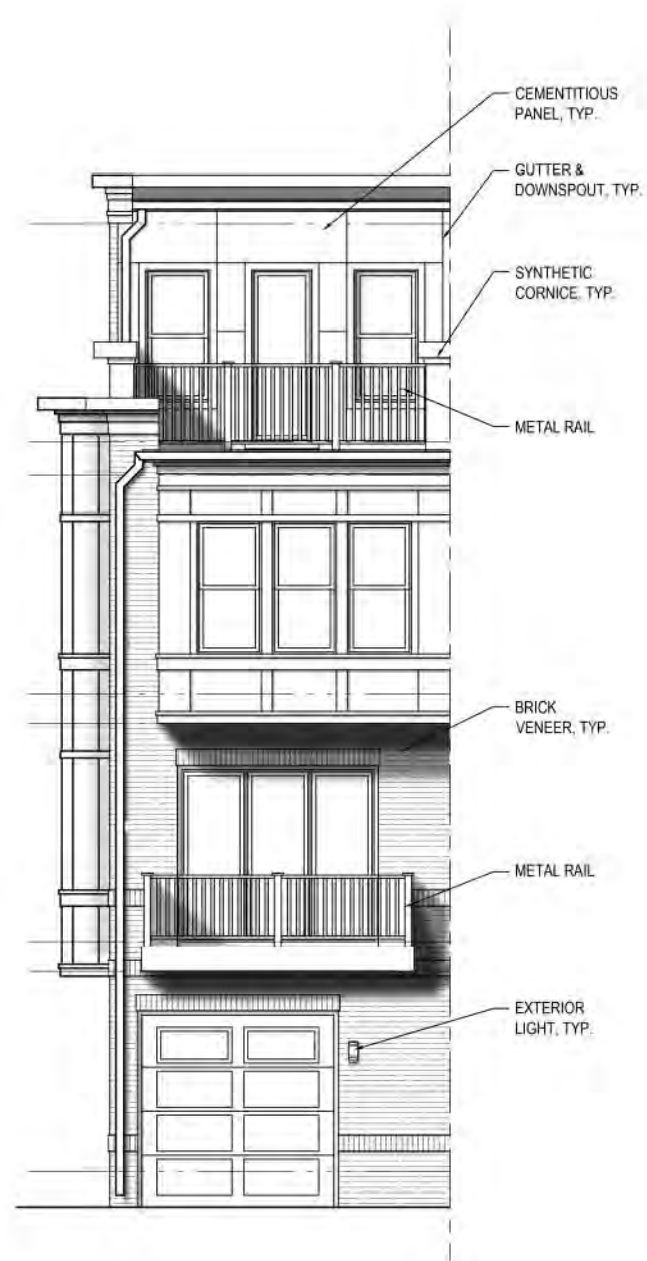
MADISON HOMES

0 1 2 3 4 5 6 7 8 9 10  
SCALE 1/8" = 1'-0"

ZONING COMMISSION  
District of Columbia  
08/11/15  
MH1.009A.00D  
CASE NO.15-02  
EXHIBIT NO.16A3



18' REAR  
ELEV. END



14' REAR  
ELEV. END



14' REAR  
ELEV. TYP.

REAR ELEVATIONS

BROOKLAND TOWNHOMES  
Washington, DC

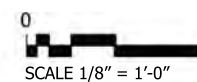
MADISON HOMES

A.304



8521 Leesburg Pike Suite 700 Vienna, VA 22182  
P: 571.830.1800 | F: 571.830.1801 | www.lessarddesign.com

© 2015 Lessard Design Inc. expressly reserves its common law copyright and other property rights in these plans. These plans are not to be changed or copied in any form or matter whatsoever, nor are they to be assigned to any third party without the express written permission and consent of Lessard Design, Inc.



08/11/15  
MHI.009A.00D

NOTES: (1) FLEXIBILITY IS REQUESTED TO VARY THE FINAL SELECTION OF THE EXTERIOR MATERIALS WITHIN THE COLOR RANGES AND GENERAL MATERIAL TYPES PROPOSED, BASED ON AVAILABILITY AT THE TIME OF CONSTRUCTION WITHOUT REDUCING THE QUALITY OF MATERIALS. (2) FLEXIBILITY IS REQUESTED TO MAKE MINOR REFINEMENTS TO EXTERIOR DETAILS AND DIMENSIONS, INCLUDING SILLS, BASES, CORNICES, RAILINGS AND TRIM, AND ANY OTHER CHANGES TO COMPLY WITH THE BUILDING CODES OR THAT OTHERWISE NECESSARY TO OBTAIN FINAL BUILDING PERMIT.



-  1 GENERAL SHALE - CAMPUS BLEND OR EQUIVALENT
-  2 GENERAL SHALE - TIDEWATER OR EQUIVALENT
-  3 GENERAL SHALE - COMMONWEALTH OR EQUIVALENT
-  4 GENERAL SHALE - VIRGINIA HIGHLANDS BRICK OR EQUIVALENT
-  5 GENERAL SHALE - LARIMER OR EQUIVALENT
-  6 McCORMICK PAINT - #0507 DEEP LAGOON OR EQUIVALENT
-  7 McCORMICK PAINT - #0443 SERPENTINE OR EQUIVALENT



**MATERIAL DETAILS**

**BROOKLAND TOWNHOMES**  
Washington, DC

**A.400**

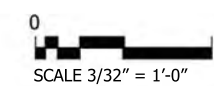


8521 Leesburg Pike Suite 700 Vienna, VA 22182  
P: 571.830.1800 | F: 571.830.1801 | www.lessarddesign.com

© 2015 Lessard Design Inc. expressly reserves its common law copyright and other property rights in these plans. These plans are not to be changed or copied in any form or matter whatsoever, nor are they to be assigned to any third party without the express written permission and consent of Lessard Design, Inc.

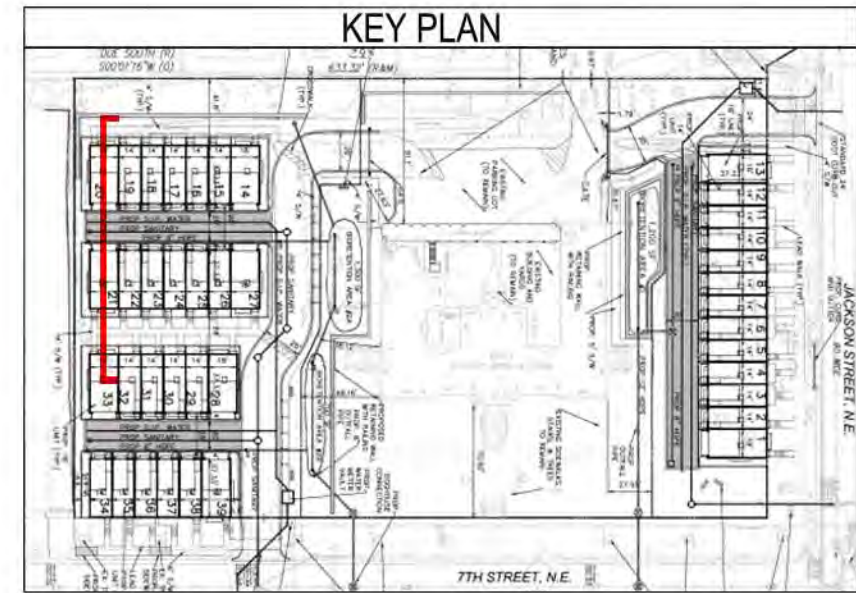
PUD APPLICATION

MADISON HOMES



08/11/15  
MHI.009A.00D

NOTES: (1) FLEXIBILITY IS REQUESTED TO VARY THE FINAL SELECTION OF THE EXTERIOR MATERIALS WITHIN THE COLOR RANGES AND GENERAL MATERIAL TYPES PROPOSED, BASED ON AVAILABILITY AT THE TIME OF CONSTRUCTION WITHOUT REDUCING THE QUALITY OF MATERIALS. (2) FLEXIBILITY IS REQUESTED TO MAKE MINOR REFINEMENTS TO EXTERIOR DETAILS AND DIMENSIONS, INCLUDING SILLS, BASES, CORNICES, RAILINGS AND TRIM, AND ANY OTHER CHANGES TO COMPLY WITH THE BUILDING CODES OR THAT OTHERWISE NECESSARY TO OBTAIN FINAL BUILDING PERMIT.



NOTE: SEE CIVIL FOR FURTHER DIMENSIONING



8521 Leesburg Pike Suite 700 Vienna, VA 22182  
P: 571.830.1800 | F: 571.830.1801 | www.lessarddesign.com

© 2015 Lessard Design Inc. expressly reserves its common law copyright and other property rights in these plans. These plans are not to be changed or copied in any form or matter whatsoever, nor are they to be assigned to any third party without the express written permission and consent of Lessard Design, Inc.

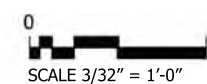
CONCEPTUAL ELEVATIONS

CONCEPTUAL ALLEY ELEVATION  
PUD APPLICATION

BROOKLAND TOWNHOMES  
Washington, DC

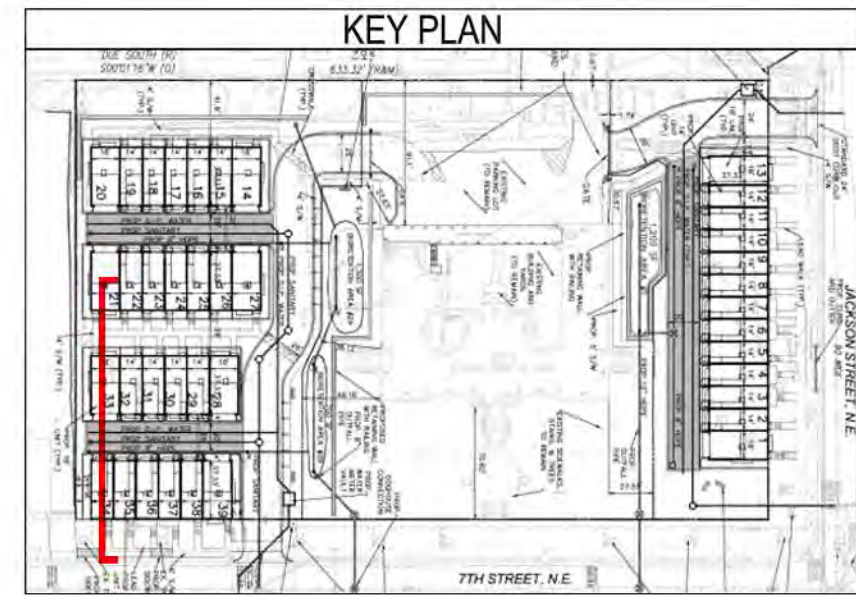
MADISON HOMES

A.500



08/11/15  
MHI.009A.00D

NOTES: (1) FLEXIBILITY IS REQUESTED TO VARY THE FINAL SELECTION OF THE EXTERIOR MATERIALS WITHIN THE COLOR RANGES AND GENERAL MATERIAL TYPES PROPOSED, BASED ON AVAILABILITY AT THE TIME OF CONSTRUCTION WITHOUT REDUCING THE QUALITY OF MATERIALS. (2) FLEXIBILITY IS REQUESTED TO MAKE MINOR REFINEMENTS TO EXTERIOR DETAILS AND DIMENSIONS, INCLUDING SILLS, BASES, CORNICES, RAILINGS AND TRIM, AND ANY OTHER CHANGES TO COMPLY WITH THE BUILDING CODES OR THAT OTHERWISE NECESSARY TO OBTAIN FINAL BUILDING PERMIT.



NOTE: SEE CIVIL FOR FOR FUTHER DIMENSIONING



8521 Leesburg Pike Suite 700 Vienna, VA 22182  
P: 571.830.1800 | F: 571.830.1801 | www.lessarddesign.com

© 2015 Lessard Design Inc. expressly reserves its common law copyright and other property rights in these plans. These plans are not to be changed or copied in any form or matter whatsoever, nor are they to be assigned to any third party without the express written permission and consent of Lessard Design, Inc.

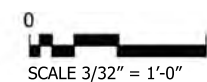
**CONCEPTUAL ELEVATIONS**

**BROOKLAND TOWNHOMES**  
Washington, DC

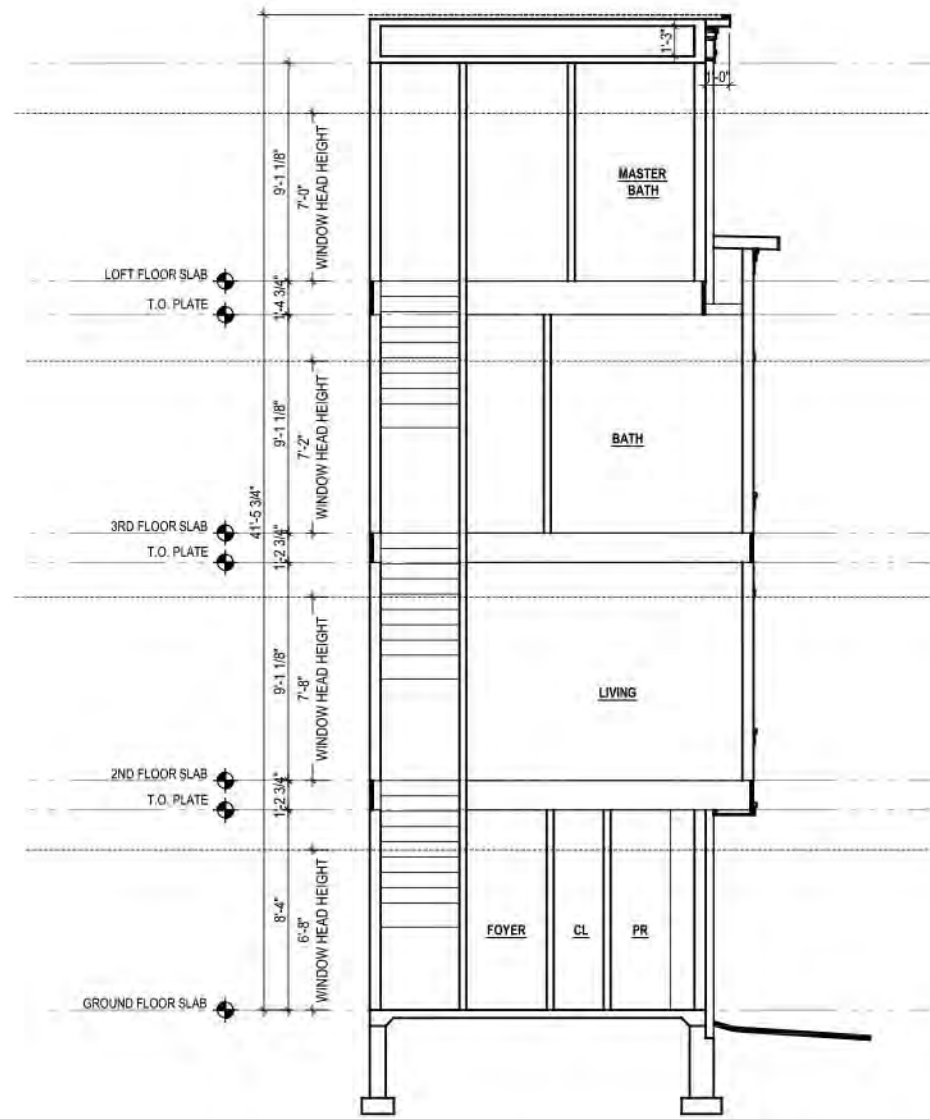
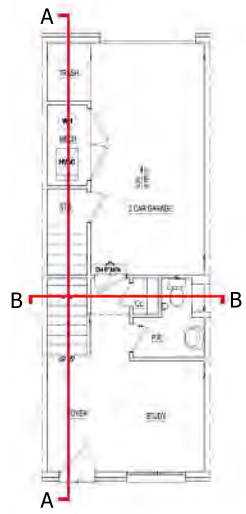
**A.501**

CONCEPTUAL ALLEY ELEVATION  
PUD APPLICATION

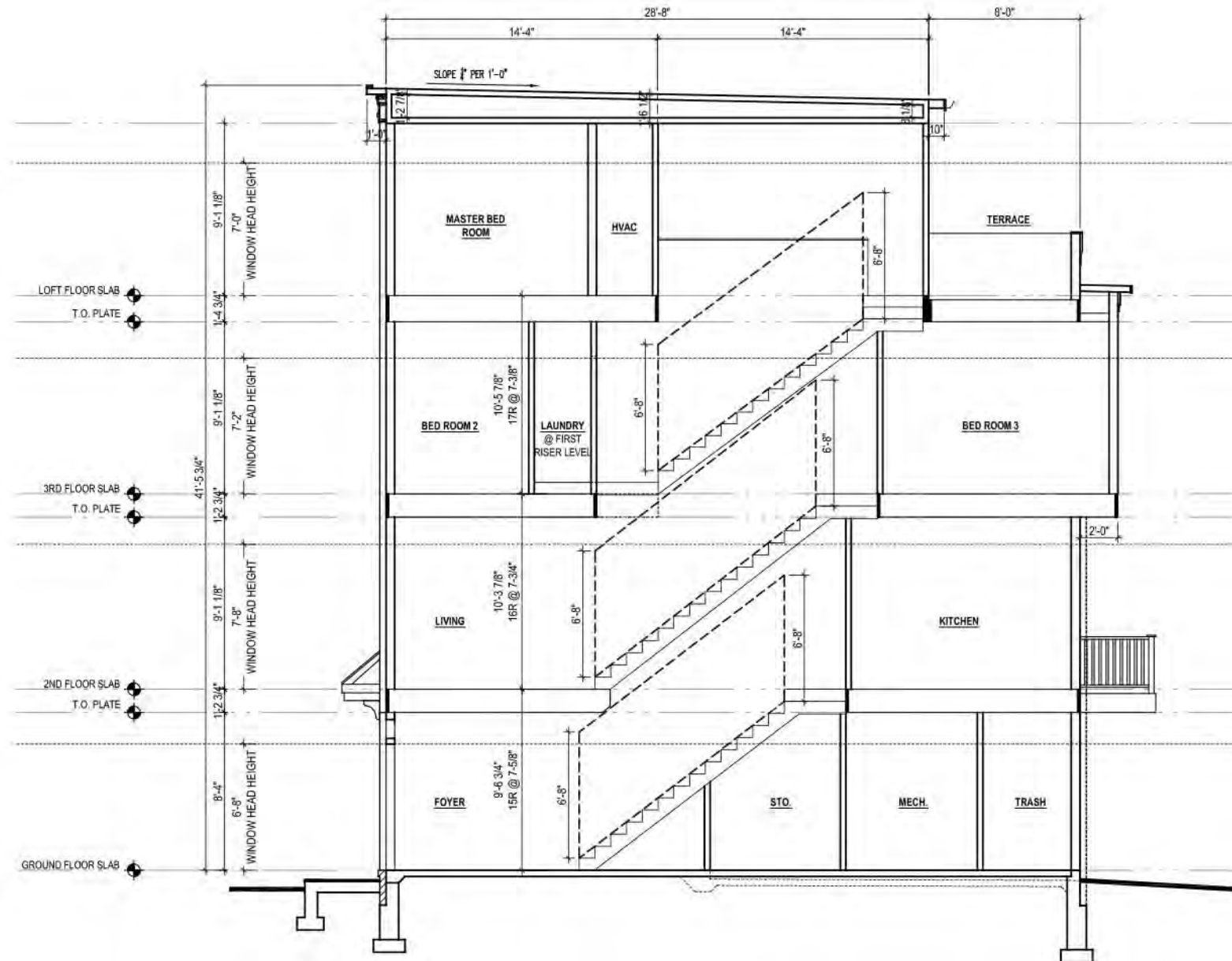
MADISON HOMES



08/11/15  
MHI.009A.00D



B



A

INTERIOR PLAN LAYOUTS ARE CONCEPTUAL AND FOR ILLUSTRATIVE PURPOSES; FINAL LAYOUTS MAY VARY.

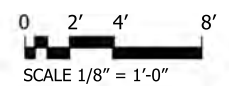
**CONCEPTUAL SECTION**

**BROOKLAND TOWNHOMES**  
Washington, DC

**A.600**

14' X 37' UNIT  
PUD APPLICATION

MADISON HOMES

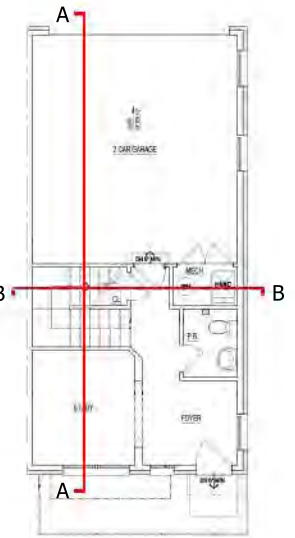
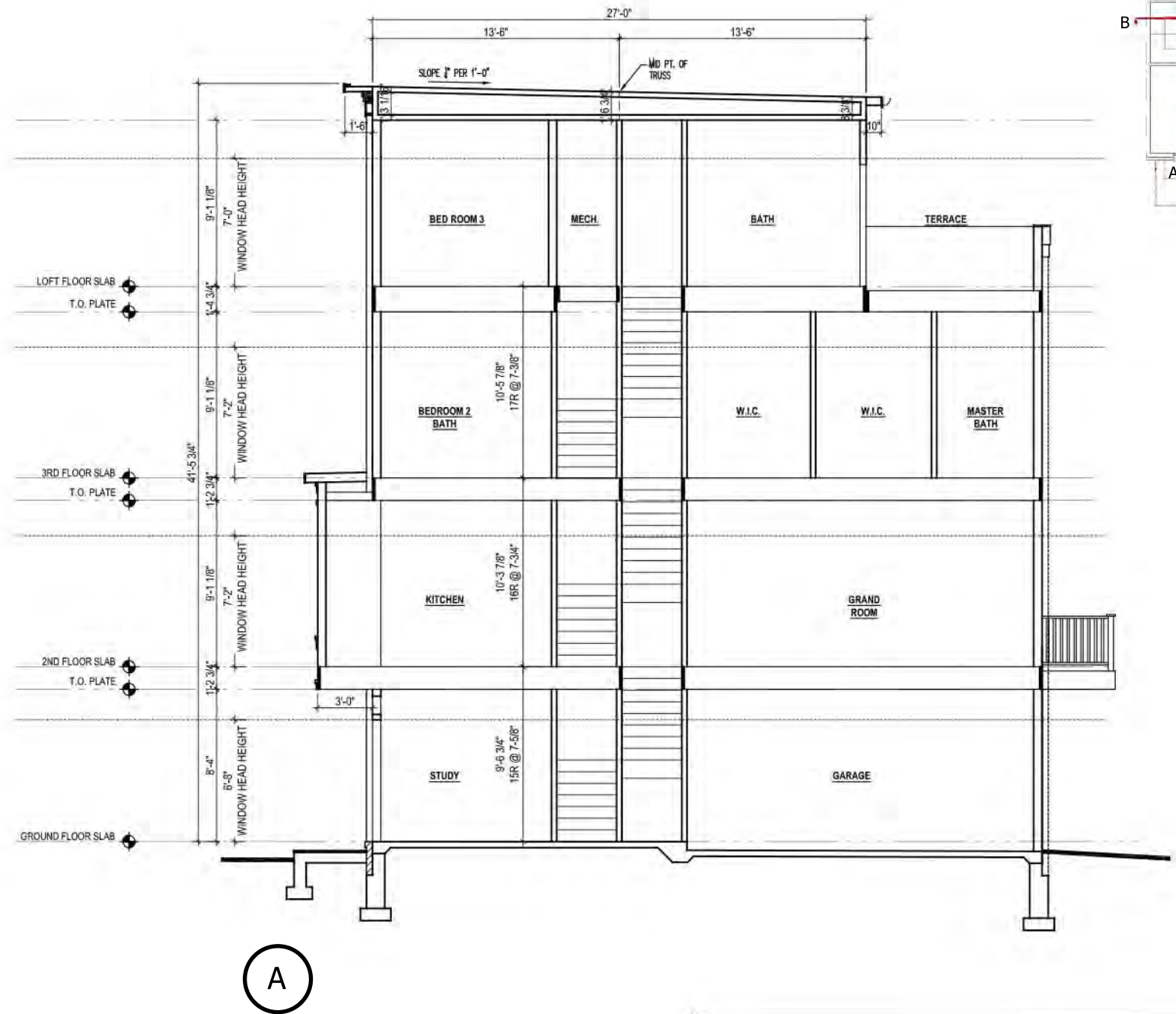
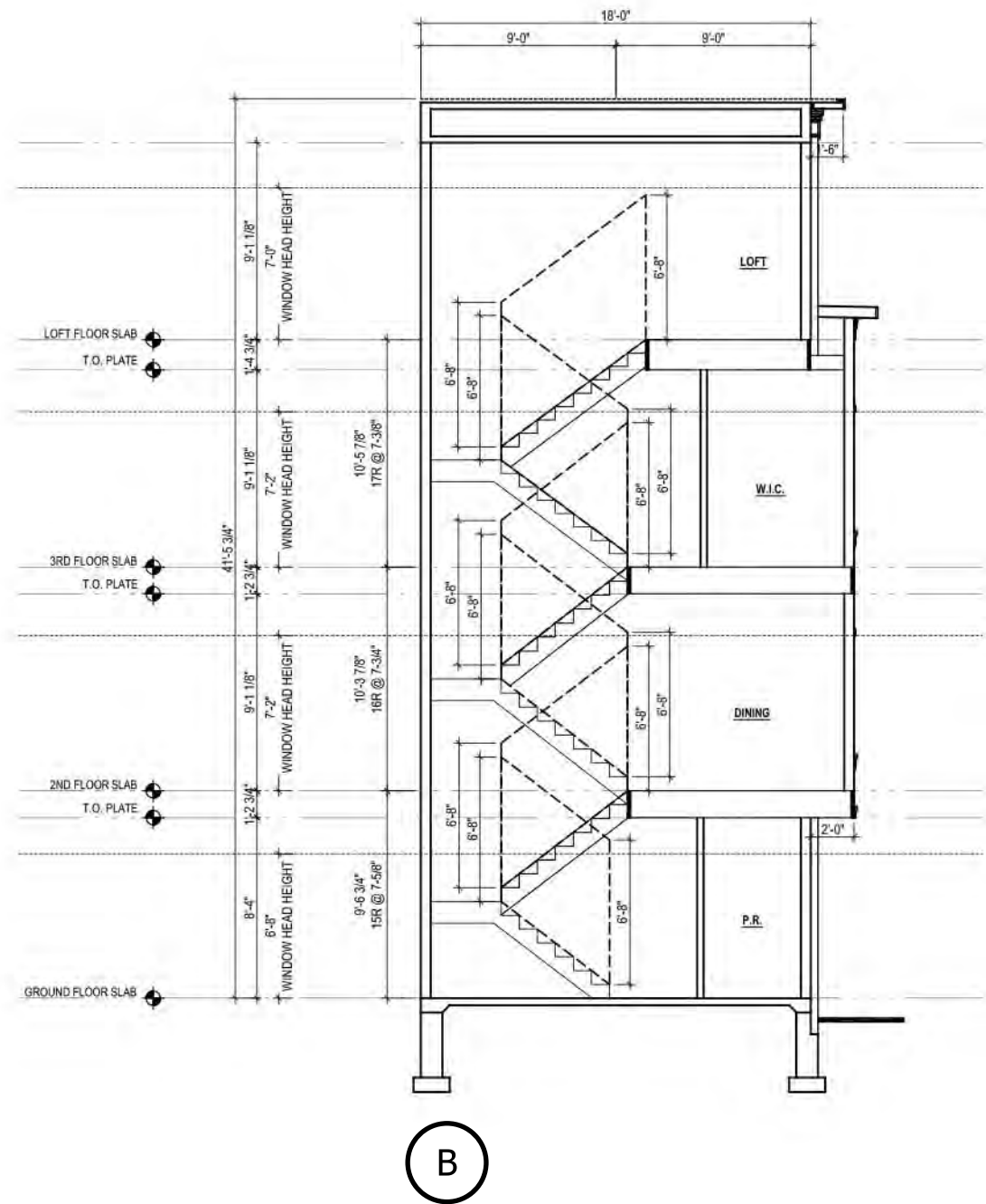


08/11/15  
MHI.009A.00D



8521 Leesburg Pike Suite 700 Vienna, VA 22182  
P: 571.830.1800 | F: 571.830.1801 | www.lessarddesign.com

© 2013 Lessard Design Inc. expressly reserves its common law copyright and other property rights in these plans. These plans are not to be changed or copied in any form or matter whatsoever, nor are they to be assigned to any third party without the express written permission and consent of Lessard Design, Inc.



INTERIOR PLAN LAYOUTS ARE CONCEPTUAL AND FOR ILLUSTRATIVE PURPOSES; FINAL LAYOUTS MAY VARY.



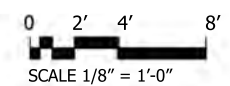
8521 Leesburg Pike Suite 700 Vienna, VA 22182  
 P: 571.830.1800 | F: 571.830.1801 | www.lessarddesign.com

© 2015 Lessard Design Inc. expressly reserves its common law copyright and other property rights in these plans. These plans are not to be changed or copied in any form or matter whatsoever, nor are they to be assigned to any third party without the express written permission and consent of Lessard Design, Inc.

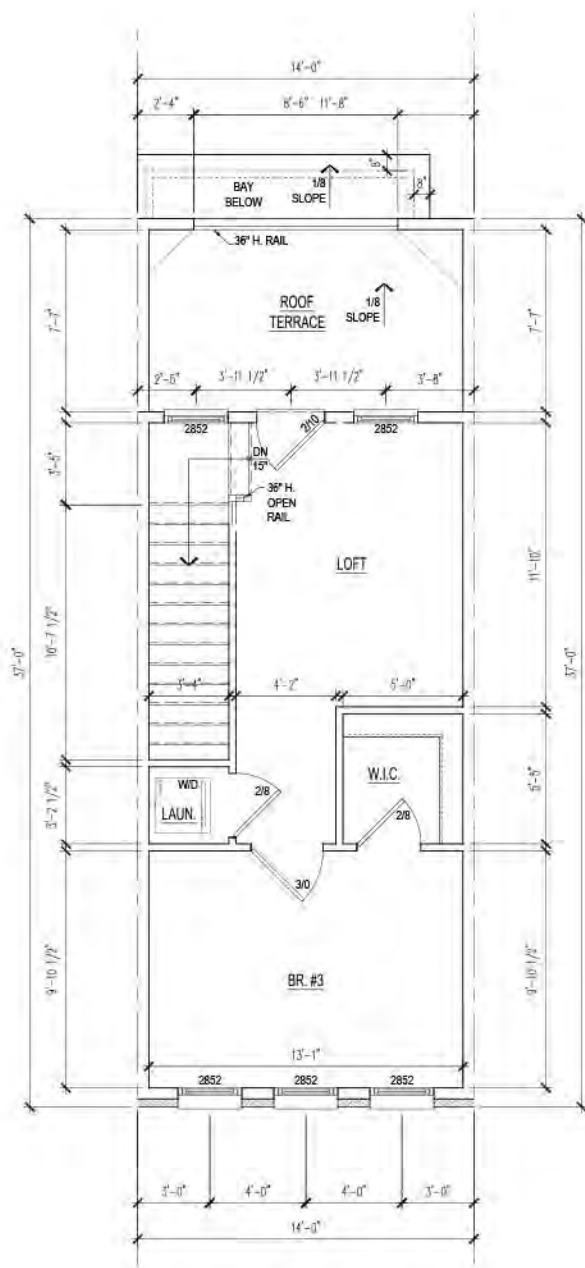
**CONCEPTUAL SECTION**  
 18' X 37' UNIT  
 PUD APPLICATION

**BROOKLAND TOWNHOMES**  
 Washington, DC  
 MADISON HOMES

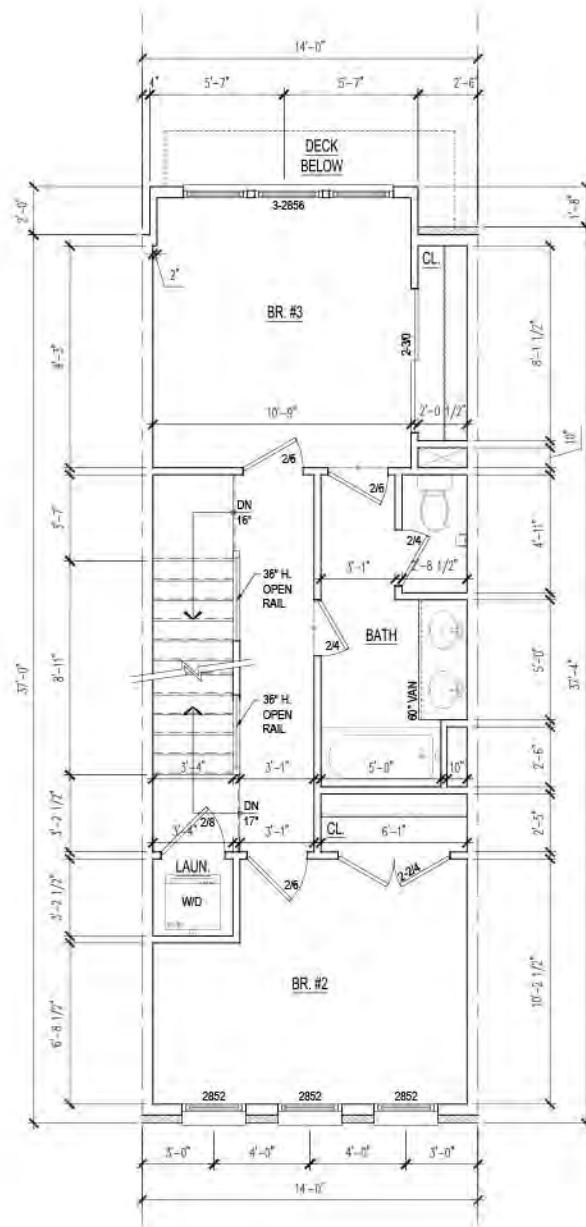
**A.601**



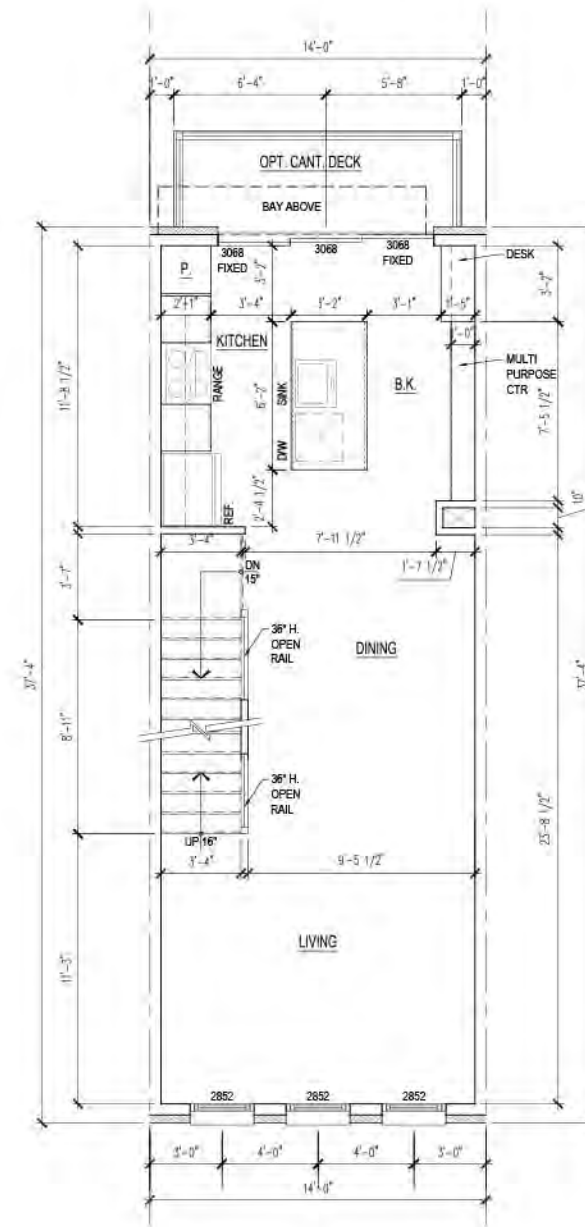
08/11/15  
 MHL.009A.00D



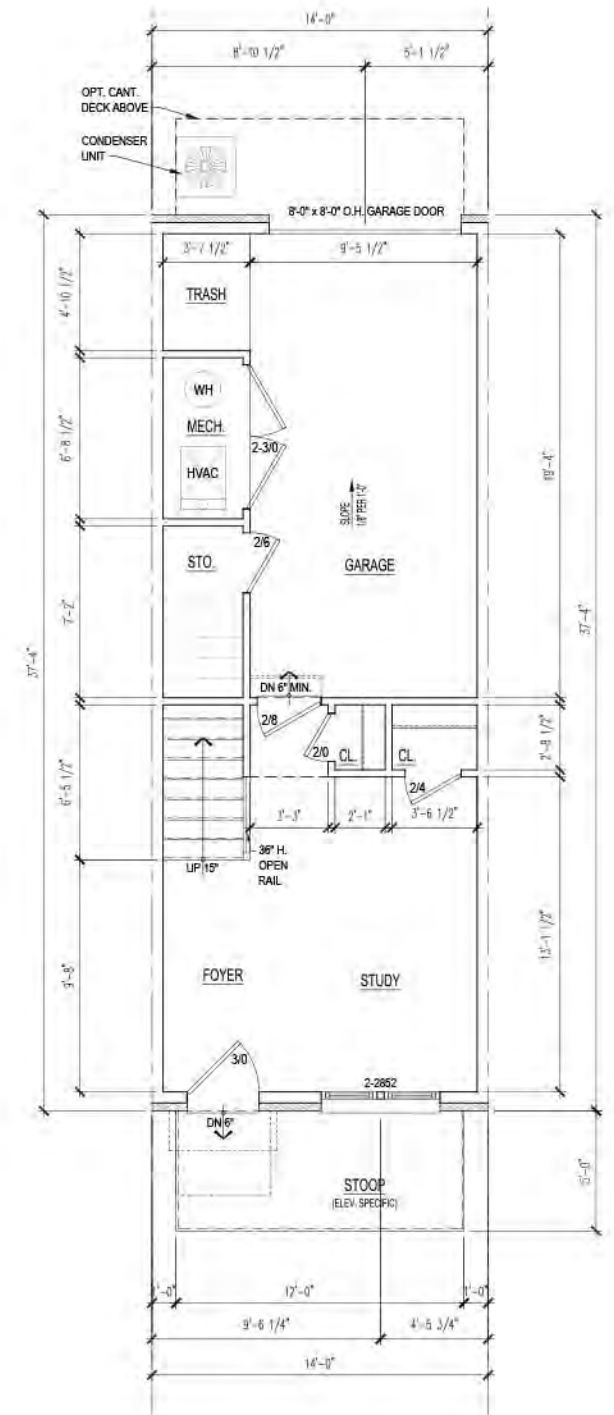
LOFT FLOOR PLAN



THIRD FLOOR PLAN



SECOND FLOOR PLAN



GROUND FLOOR PLAN

INTERIOR PLAN LAYOUTS ARE CONCEPTUAL AND FOR ILLUSTRATIVE PURPOSES; FINAL LAYOUTS MAY VARY.



8521 Leesburg Pike Suite 700 Vienna, VA 22182  
P: 571.830.1800 | F: 571.830.1801 | www.lessarddesign.com

© 2015 Lessard Design Inc. expressly reserves its common law copyright and other property rights in these plans. These plans are not to be changed or copied in any form or matter whatsoever, nor are they to be assigned to any third party without the express written permission and consent of Lessard Design, Inc.

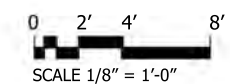
CONCEPTUAL FLOOR PLANS

BROOKLAND TOWNHOMES  
Washington, DC

A.700

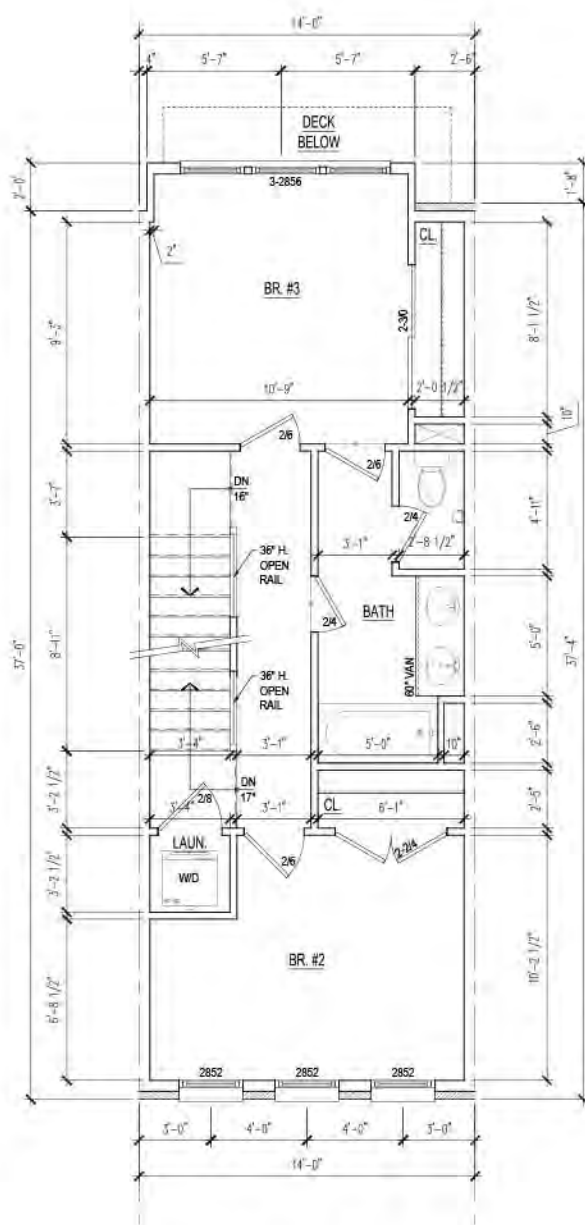
A.D.U. 14' X 37' UNIT  
PUD APPLICATION

MADISON HOMES



08/11/15  
MHI.009A.00D

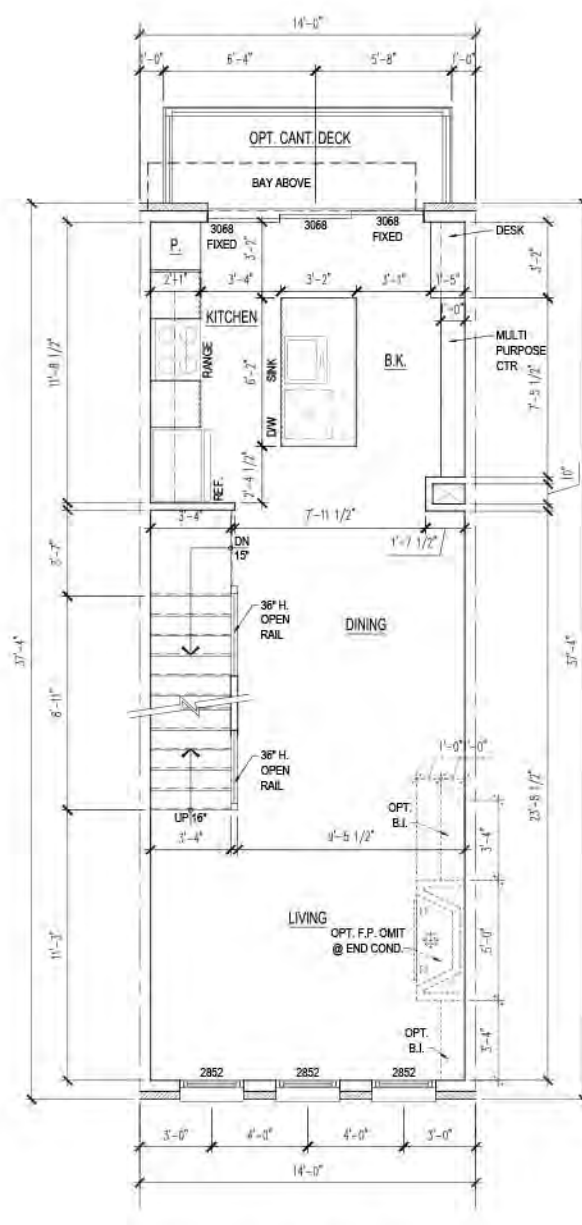




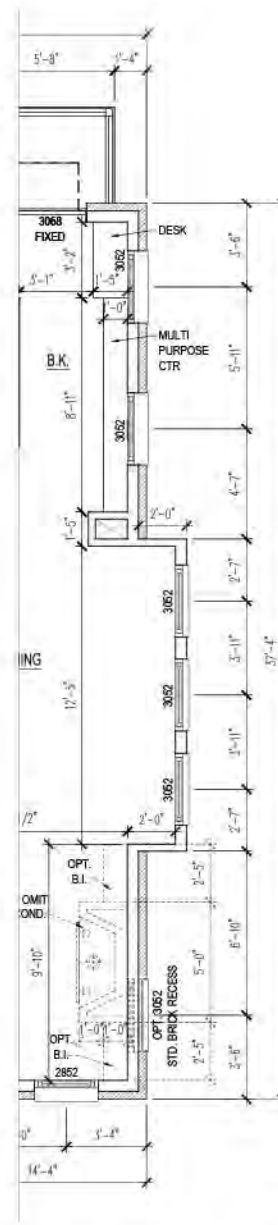
THIRD FLOOR PLAN



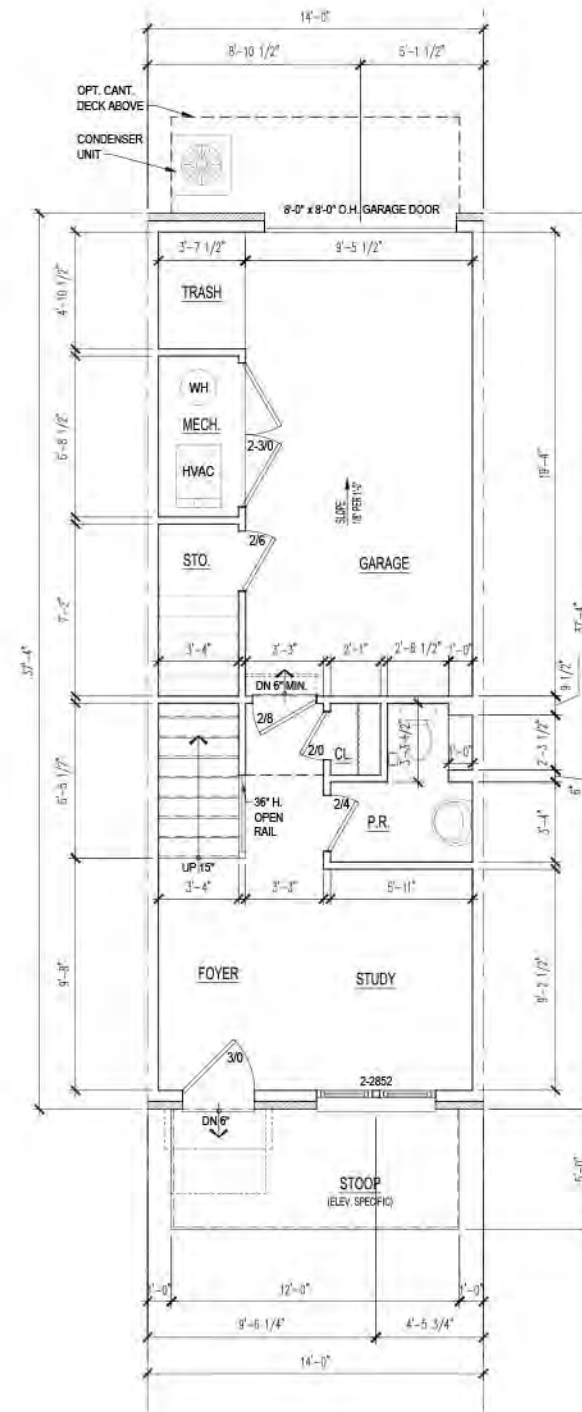
END CONDITION



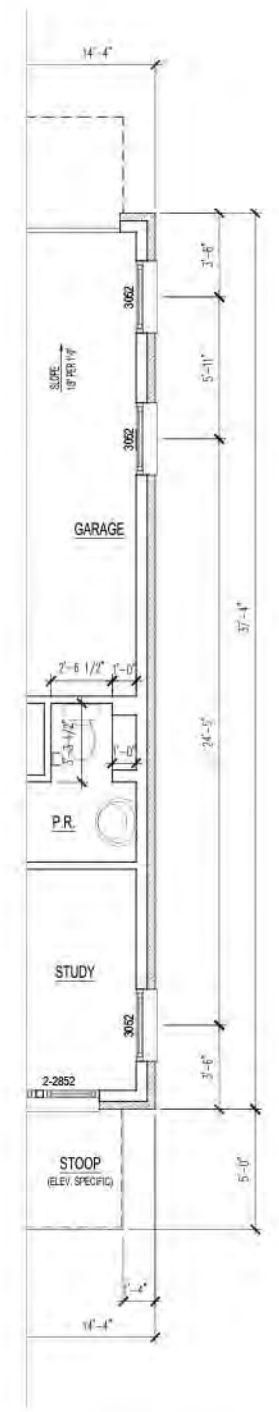
SECOND FLOOR PLAN



END CONDITION



GROUND FLOOR PLAN



END CONDITION

INTERIOR PLAN LAYOUTS ARE CONCEPTUAL AND FOR ILLUSTRATIVE PURPOSES; FINAL LAYOUTS MAY VARY.



8521 Leesburg Pike Suite 700 Vienna, VA 22182  
 P: 571.830.1800 | F: 571.830.1801 | www.lessarddesign.com

© 2015 Lessard Design Inc. expressly reserves its common law copyright and other property rights in these plans. These plans are not to be changed or copied in any form or matter whatsoever, nor are they to be assigned to any third party without the express written permission and consent of Lessard Design, Inc.

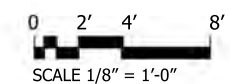
CONCEPTUAL FLOOR PLANS

STANDARD 14' X 37' UNIT  
 PUD APPLICATION

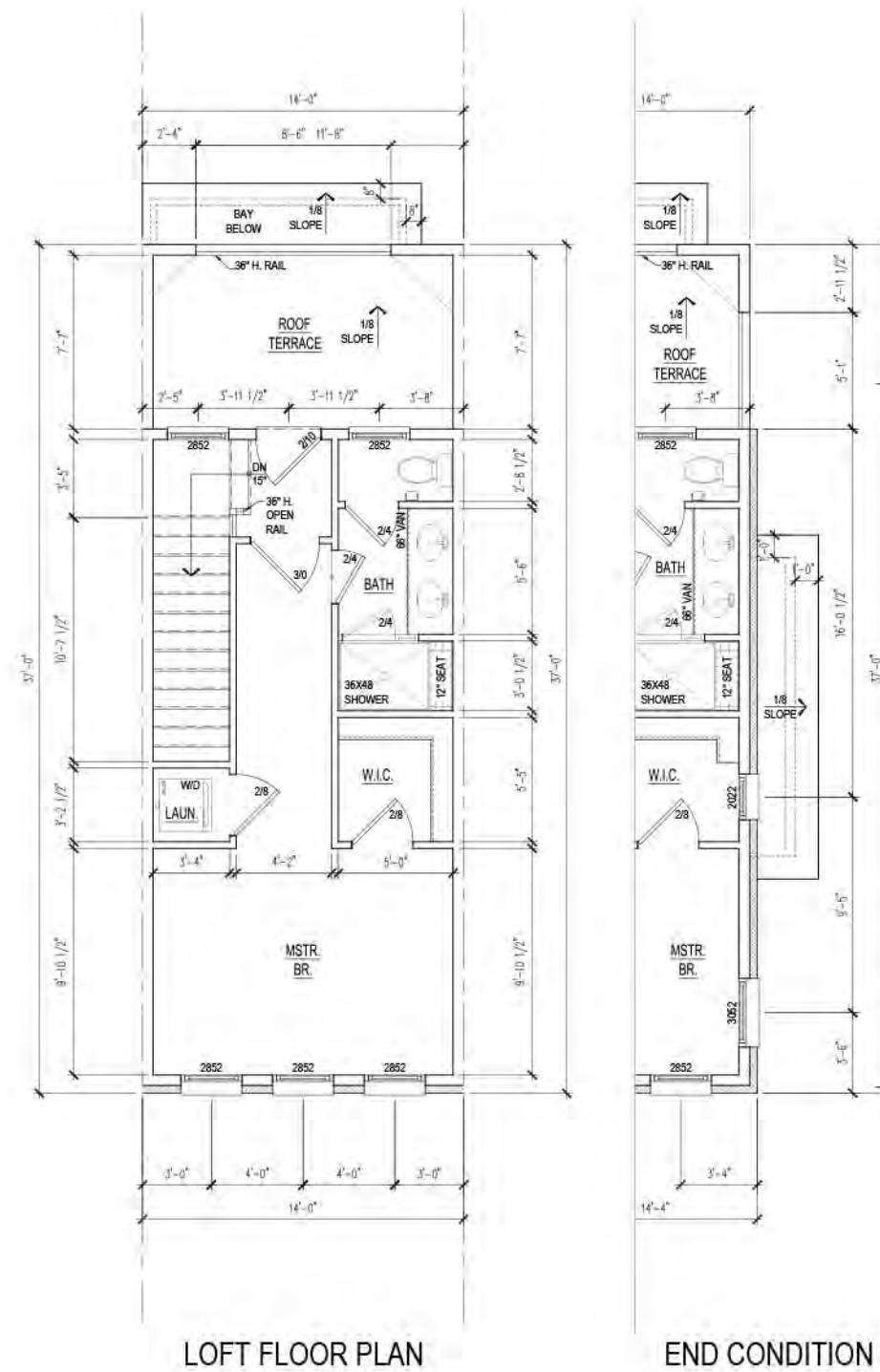
BROOKLAND TOWNHOMES  
 Washington, DC

MADISON HOMES

A.701



08/11/15  
 MHI.009A.00D



INTERIOR PLAN LAYOUTS ARE CONCEPTUAL AND FOR ILLUSTRATIVE PURPOSES; FINAL LAYOUTS MAY VARY.

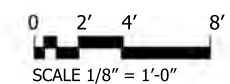
**CONCEPTUAL FLOOR PLANS**

**BROOKLAND TOWNHOMES**  
Washington, DC

**A.701A**

STANDARD 14' X 37' UNIT  
PUD APPLICATION

MADISON HOMES



08/11/15  
MHI.009A.00D



8521 Leesburg Pike Suite 700 Vienna, VA 22182  
P: 571.830.1800 | F: 571.830.1801 | www.lessarddesign.com

© 2015 Lessard Design Inc. expressly reserves its common law copyright and other property rights in these plans. These plans are not to be changed or copied in any form or matter whatsoever, nor are they to be assigned to any third party without the express written permission and consent of Lessard Design, Inc.