

BROOKLAND TOWNHOMES

Z.C. CASE # 15-02

PUD SUBMISSION

JANUARY 30, 2015
REVISED MAY 12, 2015
REVISED AUGUST 14, 2015

Sheet Index

A.001	Site Plan
A.002	Aerial Map
A.003	Zoning Map
A.004	Context
A.005	Rendered Landscape Plan
A.006	Landscaping Details
A.007	Landscaping Details
A.008	Landscaping Details
A.100	Conceptual Perspective
A.101	Conceptual Perspective
A.200	Conceptual Elevations, Lots 1-13
A.201	Conceptual Elevations, Lots 14-20
A.202	Conceptual Elevations, Lots 21-27
A.203	Conceptual Elevations, Lots 28-33
A.204	Conceptual Elevations, Lots 34-39
A.205	Conceptual Elevations, Front and Side
A.206	Conceptual Elevations, Rear
A.300	14' Unit Elevations
A.301	14' Unit Elevations
A.302	14' Unit Elevations
A.303	18' Unit Elevations
A.304	Rear Elevations
A.400	Material Details
A.500	Conceptual Elevations, Alley
A.501	Conceptual Elevations, Alley
A.600	Conceptual Section
A.601	Conceptual Section
A.700	Conceptual Floor Plans
A.701	Conceptual Floor Plans
A.701A	Conceptual Floor Plans
A.702	Conceptual Floor Plans
A.702A	Conceptual Floor Plans
C.01	Existing Conditions Plan
C.02	Site and Utility Plan



Applicant/Contract Purchaser: MHI-Brookland, LLC

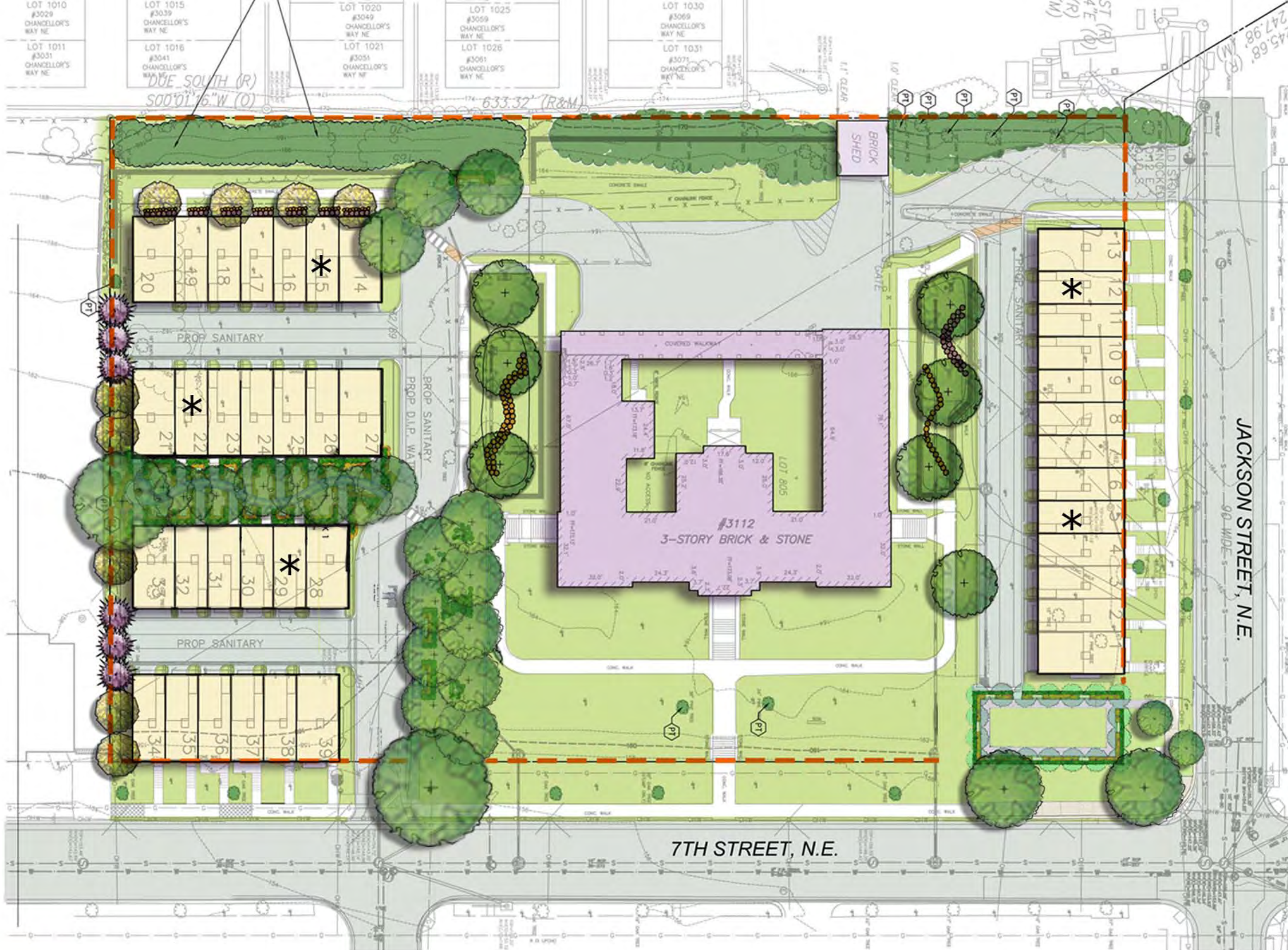
Owner: The Redemptorists

Land Use Counsel/Agent: Goulston & Storrs

Civil Engineer: VIKA Capitol

Architect: Lessard Design

Landscape Architect: Solutions IPEM



- PROPOSED TOWNHOMES
- * DENOTES A.D.U. UNIT
- EXISTING BUILDING



8521 Leesburg Pike Suite 700 Vienna, VA 22182
 P: 571.830.1800 | F: 571.830.1801 | www.lessarddesign.com

© 2015 Lessard Design Inc. expressly reserves its common law copyright and other property rights in these plans. These plans are not to be changed or copied in any form or matter whatsoever, nor are they to be assigned to any third party without the express written permission and consent of Lessard Design, Inc.

SITE PLAN

PUD APPLICATION

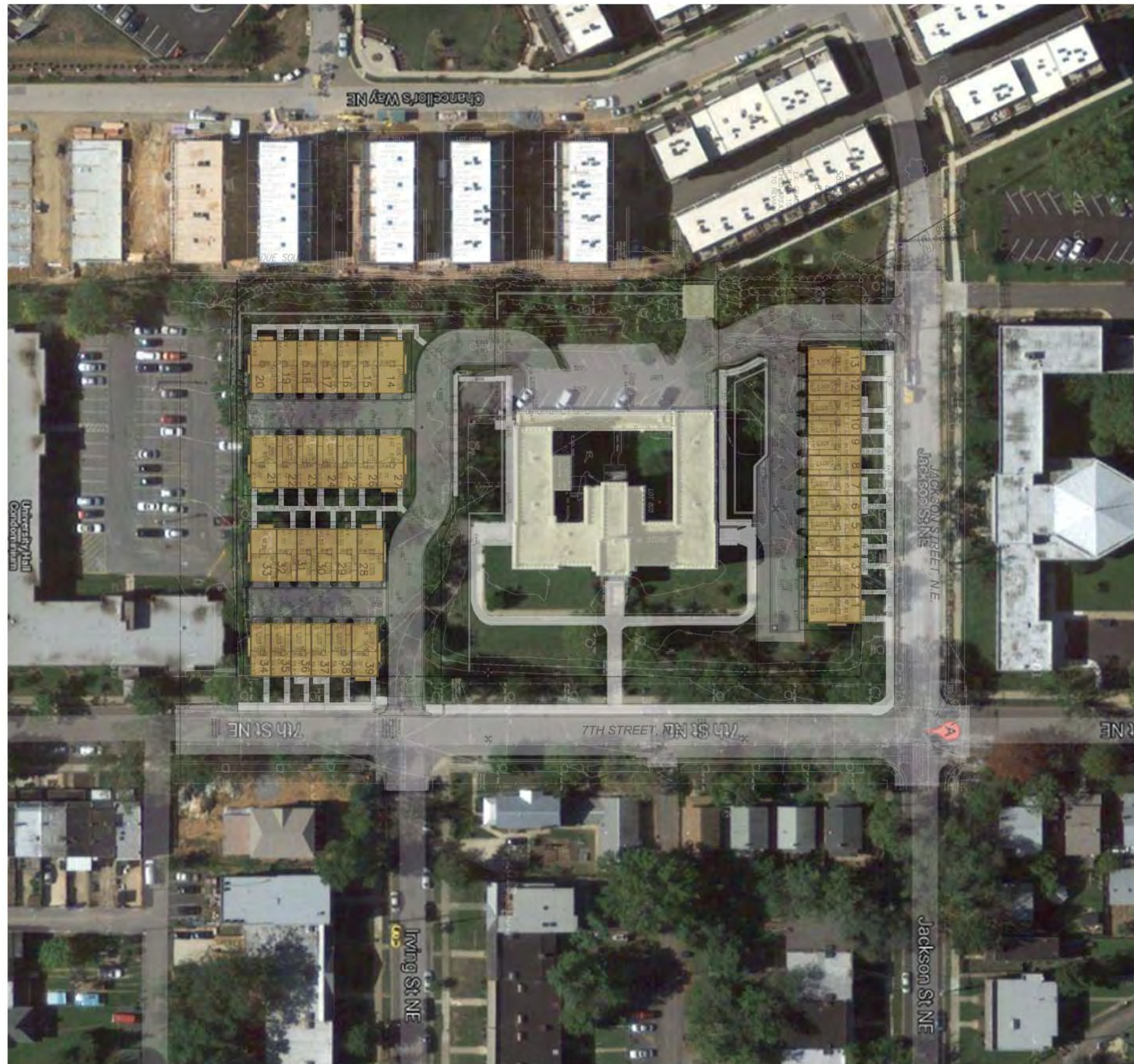
BROOKLAND TOWNHOMES
 Washington, DC

MADISON HOMES



A.001

08/11/15
 MHI.009A.00D



AERIAL MAP

BROOKLAND TOWNHOMES
Washington, DC

A.002

PUD APPLICATION

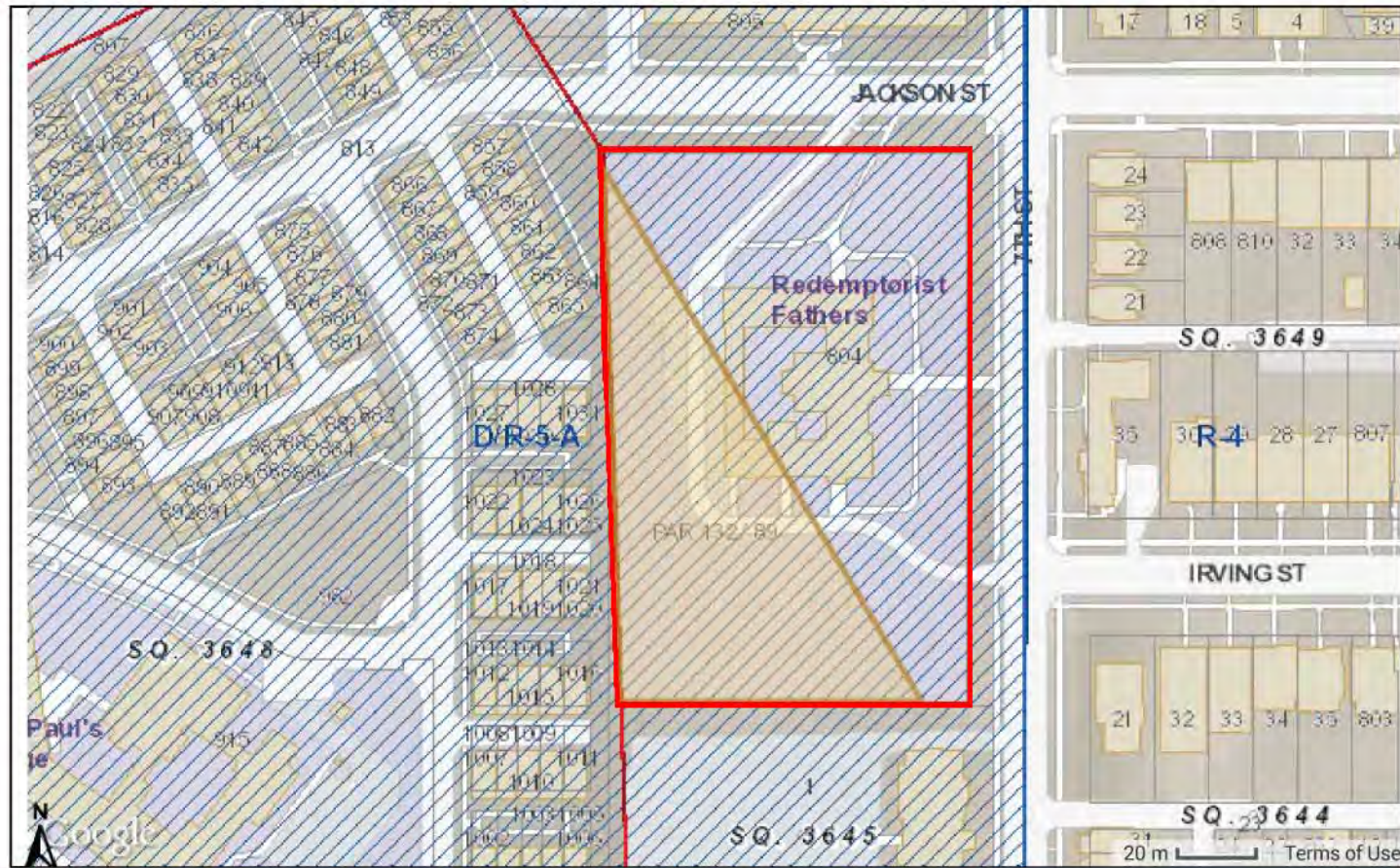
MADISON HOMES

08/11/15
MHI.009A.00D



8521 Leesburg Pike Suite 700 Vienna, VA 22182
P: 571.830.1800 | F: 571.830.1801 | www.lessarddesign.com

© 2013 Lessard Design Inc. expressly reserves its common law copyright and other property rights in these plans. These plans are not to be changed or copied in any form or matter whatsoever, nor are they to be assigned to any third party without the express written permission and consent of Lessard Design, Inc.



Zoning Layers

Zone Districts	Pending Overlays	Active PUDs	Latitude: -76.996988, Longitude: 38.928706
Pending Zones	Baist Index	Pending	Campus Plans
Overlays	Historic Districts	TDRs	CEA

While DCOZ is committed to providing accurate and timely zoning information via the zoning map, DCOZ cannot guarantee the quality, content, accuracy, or completeness of the information, text, graphics, links, and other items contained therein. All data visualizations on the zoning map should be considered approximate. Information provided in the zoning map should not be used as a substitute for legal, accounting, real estate, business, tax, or other professional advice. DCOZ assumes no liability for any errors, omissions, or inaccuracies in the information provided regardless of the cause of such or for any decision made, action taken, or action not taken by the user in reliance upon any maps or information provided herein. DCOZ retains the right to change any content on its zoning map without prior notice.

Zoning Data Summary*	
Square/Suffix/Lot	PAR / 0132 / 0089
Premises Address	NE
Zoning District(s)	R-5-A
Overlay District(s)	D
Pending Zoning District(s)	
Pending Overlay District(s)	
PUDs	None
Pending PUDs	None
Ward	5
Council Member	Kenyan McDuffie
ANC	5E
ANC Chairperson	Sylvia M. Pinkney
SMD	5E01
Commissioner	Debbie Smith-Steiner

* For a detailed explanation of zoning related terms, please refer to the DC Zoning Map Glossary available at http://maps.dcoz.dc.gov/css/Map_App_User_Guide/Glossary.pdf.

** To the extent an active PUD exists on a particular site, the PUD zoning depicts the zoning in effect for that site.



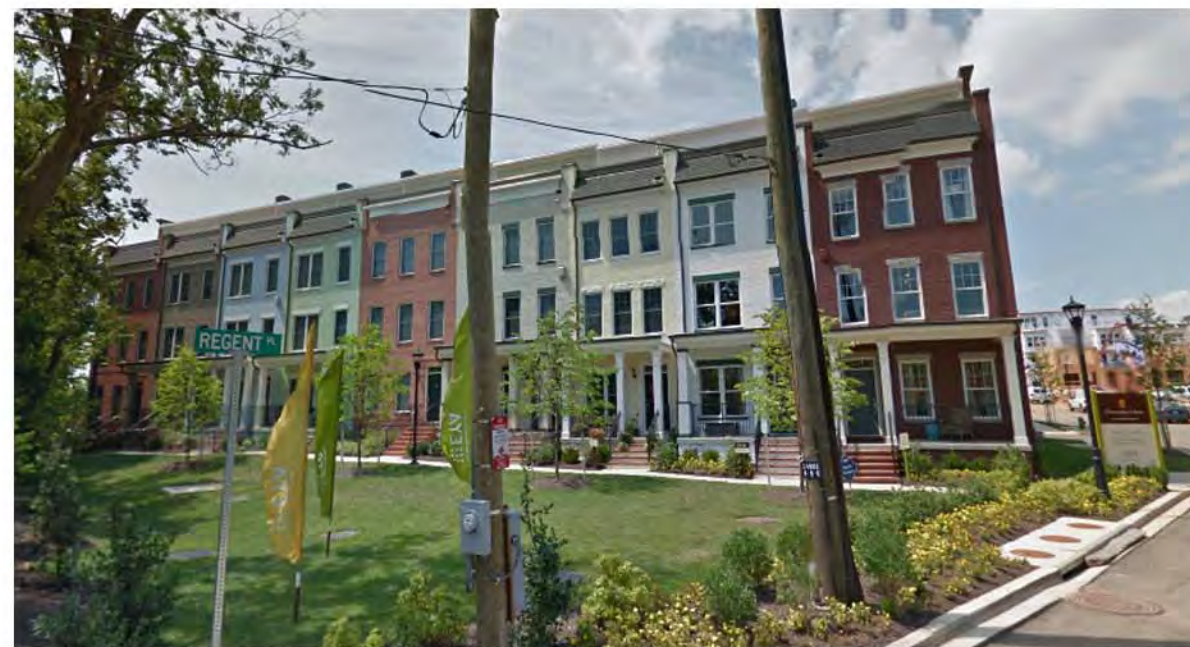
AT CHANCELLOR'S ROW TOWN HOMES



AT REAR OF 579 REGENT PINE N.E.



AT INTERSECTION OF JACKSON STREET N.E. AND 7TH STREET N.E.



AT INTERSECTION OF JACKSON STREET N.E. AND REGENT PINE N.E.



*PROPOSED STREETSCAPE ELEVATION OF CATHOLIC UNIVERSITY SOUTH CAMPUS REDEVELOPMENT



8521 Leesburg Pike Suite 700 Vienna, VA 22182
 P: 571.830.1800 | F: 571.830.1801 | www.lessarddesign.com

© 2015 Lessard Design Inc. expressly reserves its common law copyright and other property rights in these plans. These plans are not to be changed or copied in any form or matter whatsoever, nor are they to be assigned to any third party without the express written permission and consent of Lessard Design, Inc.

CONTEXT

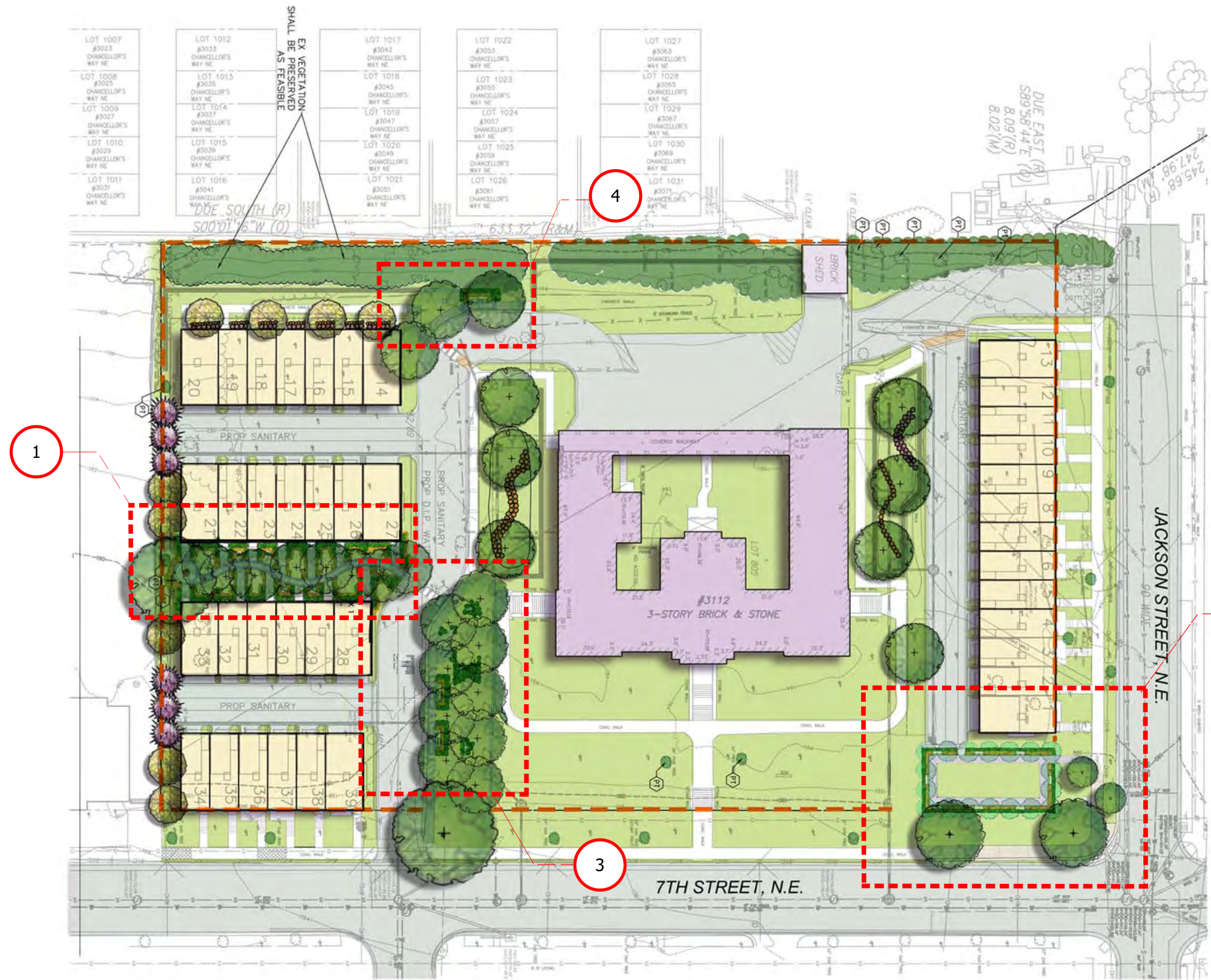
PUD APPLICATION

BROOKLAND TOWNHOMES
 Washington, DC

MADISON HOMES

A.004

08/11/15
 MHI.009A.00D



REFER TO SHEETS A-006 AND A-007 FOR LANDSCAPING DETAILS.



8521 Leesburg Pike Suite 700 Vienna, VA 22182
 P: 571.830.1800 | F: 571.830.1801 | www.lessarddesign.com

© 2015 Lessard Design Inc. expressly reserves its common law copyright and other property rights in these plans. These plans are not to be changed or copied in any form or matter whatsoever, nor are they to be assigned to any third party without the express written permission and consent of Lessard Design, Inc.

RENDERED LANDSCAPING PLAN

BROOKLAND TOWNHOMES
 Washington, DC



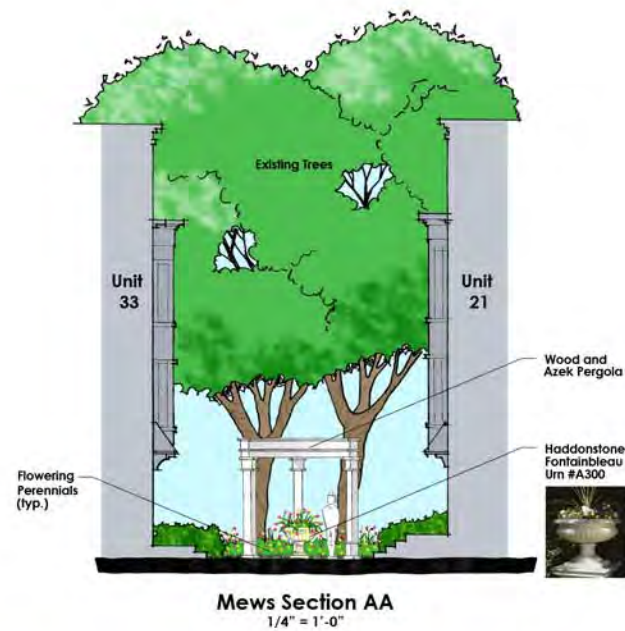
A.005

MADISON HOMES

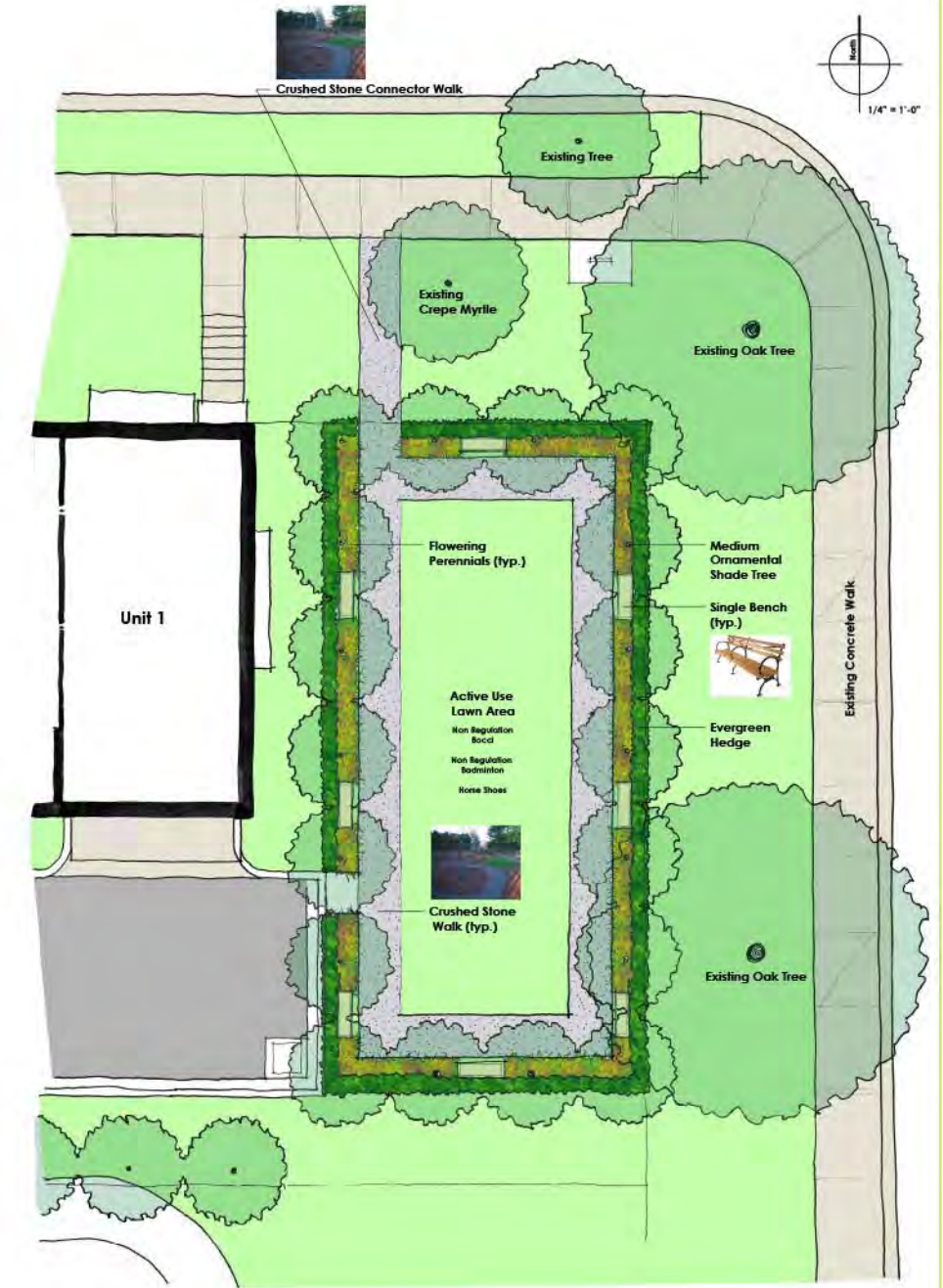
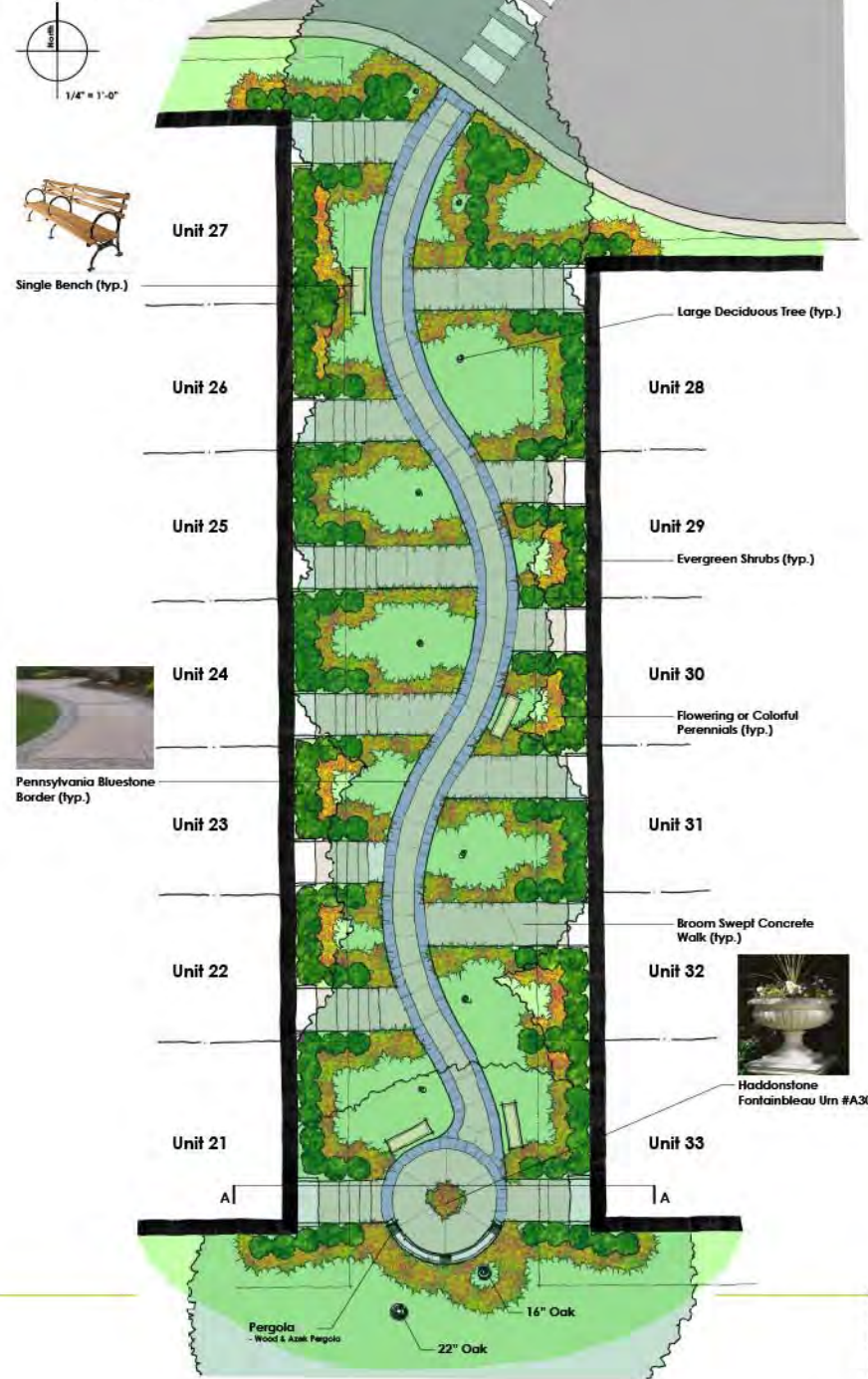
08/11/15
 MHI.009A.00D

PUD APPLICATION

THE MEWS
Brookland Townhomes
Madison Homes



THE MEWS
Brookland Townhomes
Madison Homes



BROOKLAND PARK

Brookland Townhomes
Madison Homes

SECTION A **1a**

DETAIL **1**

DETAIL **2**

LANDSCAPING DETAILS

BROOKLAND TOWNHOMES
Washington, DC

A.006

MADISON HOMES

PUD APPLICATION

08/11/15
MHI.009A.00D



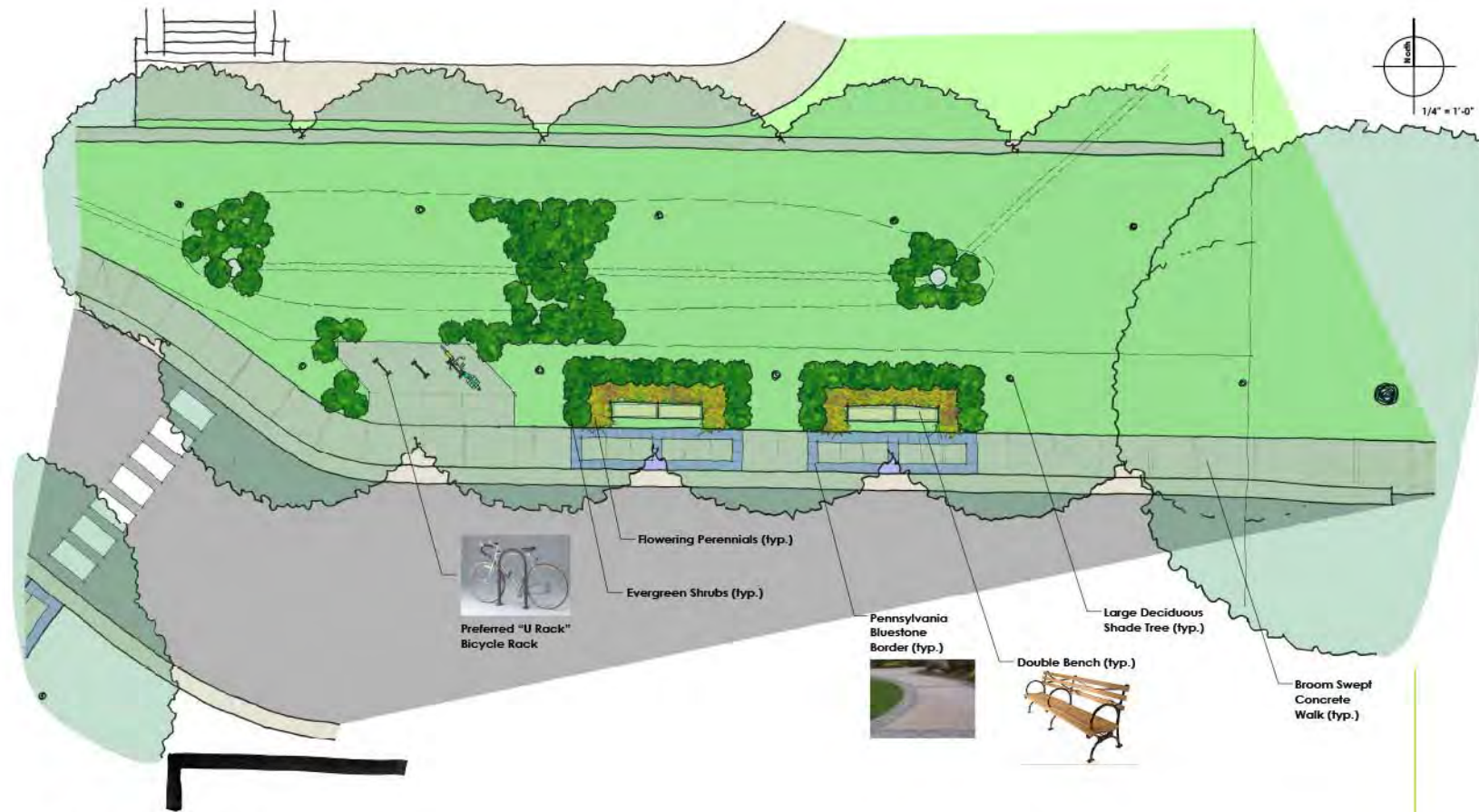
8521 Leesburg Pike Suite 700 Vienna, VA 22182
P: 571.830.1800 | F: 571.830.1801 | www.lessarddesign.com

© 2015 Lessard Design Inc. expressly reserves its common law copyright and other property rights in these plans. These plans are not to be changed or copied in any form or matter whatsoever, nor are they to be assigned to any third party without the express written permission and consent of Lessard Design, Inc.

solutions
Integrated Planning
Engineering & Management, LLC
303 North Bedford Street
Georgetown, DE 19847
Tel: 302.297.9215
www.solutionsperm.com

solutions
Integrated Planning
Engineering & Management, LLC
303 North Bedford Street
Georgetown, DE 19847
Tel: 302.297.9215
www.solutionsperm.com

solutions
Integrated Planning
Engineering & Management, LLC
303 North Bedford Street
Georgetown, DE 19847
Tel: 302.297.9215
www.solutionsperm.com



MINI-PARK 1

Brookland Townhomes
Madison Homes

solutions
Integrated Planning
Engineering & Management, LLC
303 North Bedford Street
Georgetown, DE 19847
Tel: 302.297.9215
www.solutionsipem.com

DETAIL 3



MINI-PARK 2

Brookland Townhomes
Madison Homes

solutions
Integrated Planning
Engineering & Management, LLC
303 North Bedford Street
Georgetown, DE 19847
Tel: 302.297.9215
www.solutionsipem.com

DETAIL 4



8521 Leesburg Pike Suite 700 Vienna, VA 22182
P: 571.830.1800 | F: 571.830.1801 | www.lessarddesign.com

© 2015 Lessard Design Inc. expressly reserves its common law copyright and other property rights in these plans. These plans are not to be changed or copied in any form or matter whatsoever, nor are they to be assigned to any third party without the express written permission and consent of Lessard Design, Inc.

LANDSCAPING DETAILS

PUD APPLICATION

BROOKLAND TOWNHOMES
Washington, DC

MADISON HOMES



A.007

08/11/15
MHI.009A.00D



8521 Leesburg Pike Suite 700 Vienna, VA 22182
P: 571.830.1800 | F: 571.830.1801 | www.lessarddesign.com

© 2015 Lessard Design Inc. expressly reserves its common law copyright and other property rights in these plans. These plans are not to be changed or copied in any form or matter whatsoever, nor are they to be assigned to any third party without the express written permission and consent of Lessard Design, Inc.

CONCEPTUAL PERSPECTIVE

IN BETWEEN BUILDINGS 3 & 4

BROOKLAND TOWNHOMES
Washington, DC

MADISON HOMES

A.100

08/11/15
MHI.009A.00D



8521 Leesburg Pike Suite 700 Vienna, VA 22182
P: 571.830.1800 | F: 571.830.1801 | www.lessarddesign.com

© 2015 Lessard Design Inc. expressly reserves its common law copyright and other property rights in these plans. These plans are not to be changed or copied in any form or matter whatsoever, nor are they to be assigned to any third party without the express written permission and consent of Lessard Design, Inc.

CONCEPTUAL PERSPECTIVE

BROOKLAND TOWNHOMES
Washington, DC

MADISON HOMES

A.101

08/11/15
MHI.009A.00D