

NOTES: (1) FLEXIBILITY IS REQUESTED TO VARY THE FINAL SELECTION OF THE EXTERIOR MATERIALS WITHIN THE COLOR RANGES AND GENERAL MATERIAL TYPES PROPOSED, BASED ON AVAILABILITY AT THE TIME OF CONSTRUCTION WITHOUT REDUCING THE QUALITY OF MATERIALS. (2) FLEXIBILITY IS REQUESTED TO MAKE MINOR REFINEMENTS TO EXTERIOR DETAILS AND DIMENSIONS, INCLUDING SILLS, BASES, CORNICES, RAILINGS AND TRIM, AND ANY OTHER CHANGES TO COMPLY WITH THE BUILDING CODES OR THAT OTHERWISE NECESSARY TO OBTAIN FINAL BUILDING PERMIT.



NOTE: COLOR SHOWN FOR REFERENCE ONLY. SEE STREETScape FOR DESIGN INTENT.

CONCEPTUAL UNIT ELEVATIONS

BROOKLAND TOWNHOMES
Washington, DC

A.106

TYPICAL FRONT AND SIDE ELEVATIONS
PUD APPLICATION

MADISON HOMES

0 SCALE 3/32" = 1'-0"
ZONING COMMISSION
District of Columbia
05/07/15
MHI.009A.00D
CASE NO.15-02
EXHIBIT NO.12A2



8521 Leesburg Pike Suite 700 Vienna, VA 22182
P: 571.830.1800 | F: 571.830.1801 | www.lessarddesign.com

© 2013 Lessard Design Inc. expressly reserves its common law copyright and other property rights in these plans. These plans are not to be changed or copied in any form or matter whatsoever, nor are they to be assigned to any third party without the express written permission and consent of Lessard Design, Inc.

NOTES: (1) FLEXIBILITY IS REQUESTED TO VARY THE FINAL SELECTION OF THE EXTERIOR MATERIALS WITHIN THE COLOR RANGES AND GENERAL MATERIAL TYPES PROPOSED, BASED ON AVAILABILITY AT THE TIME OF CONSTRUCTION WITHOUT REDUCING THE QUALITY OF MATERIALS. (2) FLEXIBILITY IS REQUESTED TO MAKE MINOR REFINEMENTS TO EXTERIOR DETAILS AND DIMENSIONS, INCLUDING SILLS, BASES, CORNICES, RAILINGS AND TRIM, AND ANY OTHER CHANGES TO COMPLY WITH THE BUILDING CODES OR THAT OTHERWISE NECESSARY TO OBTAIN FINAL BUILDING PERMIT.

NOTE: WINDOW LITE PATTERNS TO MATCH FRONT ELEVATION



18' UNIT REAR ELEVATION



14' MARKET RATE UNIT ELEVATION



14' A.D.U. UNIT ELEVATION

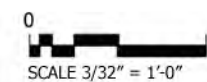
CONCEPTUAL UNIT ELEVATIONS

BROOKLAND TOWNHOMES
Washington, DC

A.107

CONCEPTUAL REAR ELEVATIONS
PUD APPLICATION

MADISON HOMES



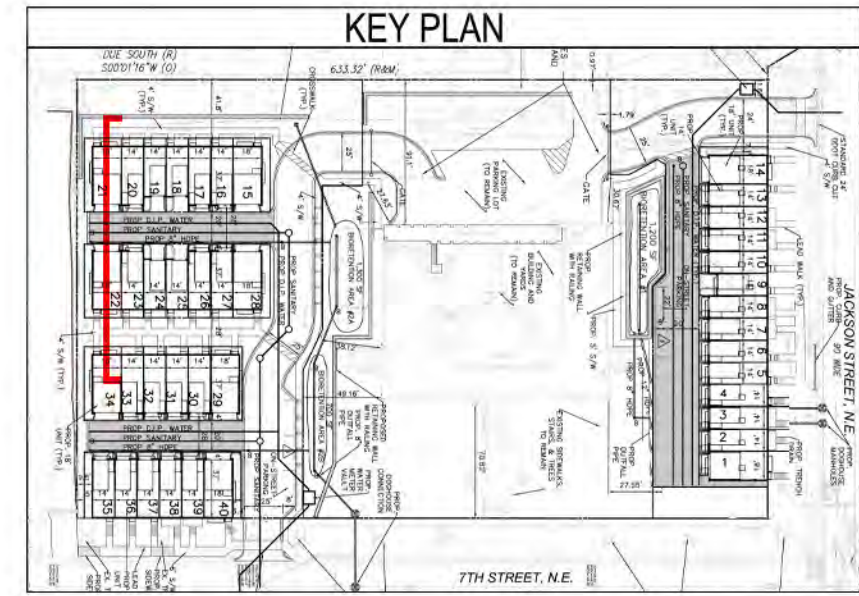
05/07/15
MHI.009A.00D



8521 Leesburg Pike Suite 700 Vienna, VA 22182
P: 571.830.1800 | F: 571.830.1801 | www.lessarddesign.com

© 2013 Lessard Design Inc. expressly reserves its common law copyright and other property rights in these plans. These plans are not to be changed or copied in any form or matter whatsoever, nor are they to be assigned to any third party without the express written permission and consent of Lessard Design, Inc.

NOTES: (1) FLEXIBILITY IS REQUESTED TO VARY THE FINAL SELECTION OF THE EXTERIOR MATERIALS WITHIN THE COLOR RANGES AND GENERAL MATERIAL TYPES PROPOSED, BASED ON AVAILABILITY AT THE TIME OF CONSTRUCTION WITHOUT REDUCING THE QUALITY OF MATERIALS. (2) FLEXIBILITY IS REQUESTED TO MAKE MINOR REFINEMENTS TO EXTERIOR DETAILS AND DIMENSIONS, INCLUDING SILLS, BASES, CORNICES, RAILINGS AND TRIM, AND ANY OTHER CHANGES TO COMPLY WITH THE BUILDING CODES OR THAT OTHERWISE NECESSARY TO OBTAIN FINAL BUILDING PERMIT.



NOTE: SEE CIVIL FOR FURTHER DIMENSIONING



8521 Leesburg Pike Suite 700 Vienna, VA 22182
P: 571.830.1800 | F: 571.830.1801 | www.lessarddesign.com

© 2013 Lessard Design Inc. expressly reserves its common law copyright and other property rights in these plans. These plans are not to be changed or copied in any form or matter whatsoever, nor are they to be assigned to any third party without the express written permission and consent of Lessard Design, Inc.

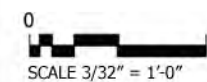
CONCEPTUAL ELEVATIONS

CONCEPTUAL ALLEY ELEVATION
PUD APPLICATION

BROOKLAND TOWNHOMES
Washington, DC

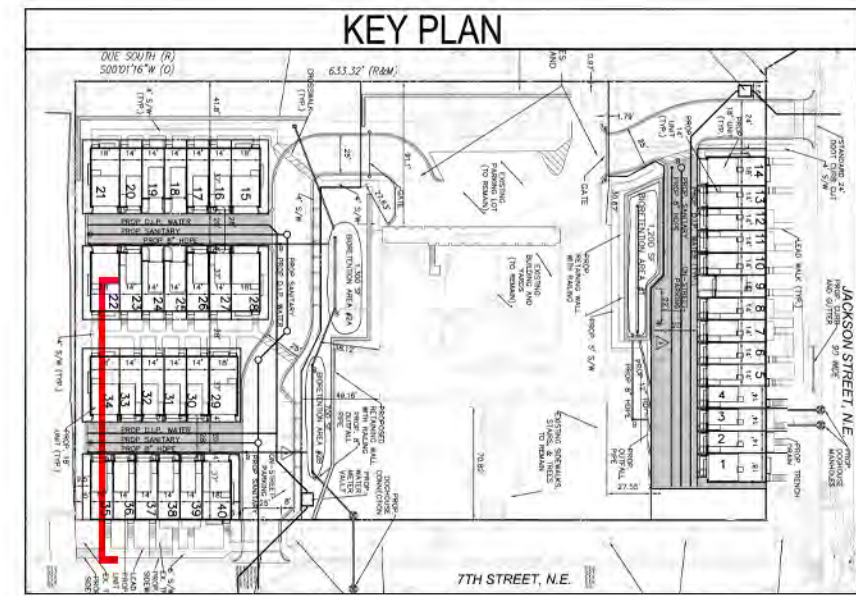
MADISON HOMES

A.108



05/07/15
MHI.009A.00D

NOTES: (1) FLEXIBILITY IS REQUESTED TO VARY THE FINAL SELECTION OF THE EXTERIOR MATERIALS WITHIN THE COLOR RANGES AND GENERAL MATERIAL TYPES PROPOSED, BASED ON AVAILABILITY AT THE TIME OF CONSTRUCTION WITHOUT REDUCING THE QUALITY OF MATERIALS. (2) FLEXIBILITY IS REQUESTED TO MAKE MINOR REFINEMENTS TO EXTERIOR DETAILS AND DIMENSIONS, INCLUDING SILLS, BASES, CORNICES, RAILINGS AND TRIM, AND ANY OTHER CHANGES TO COMPLY WITH THE BUILDING CODES OR THAT OTHERWISE NECESSARY TO OBTAIN FINAL BUILDING PERMIT.



NOTE: SEE CIVIL FOR FOR FUTHER DIMENSIONING



8521 Leesburg Pike Suite 700 Vienna, VA 22182
P: 571.830.1800 | F: 571.830.1801 | www.lessarddesign.com

© 2013 Lessard Design Inc. expressly reserves its common law copyright and other property rights in these plans. These plans are not to be changed or copied in any form or matter whatsoever, nor are they to be assigned to any third party without the express written permission and consent of Lessard Design, Inc.

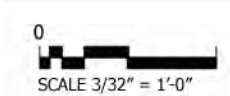
CONCEPTUAL ELEVATIONS

CONCEPTUAL ALLEY ELEVATION
PUD APPLICATION

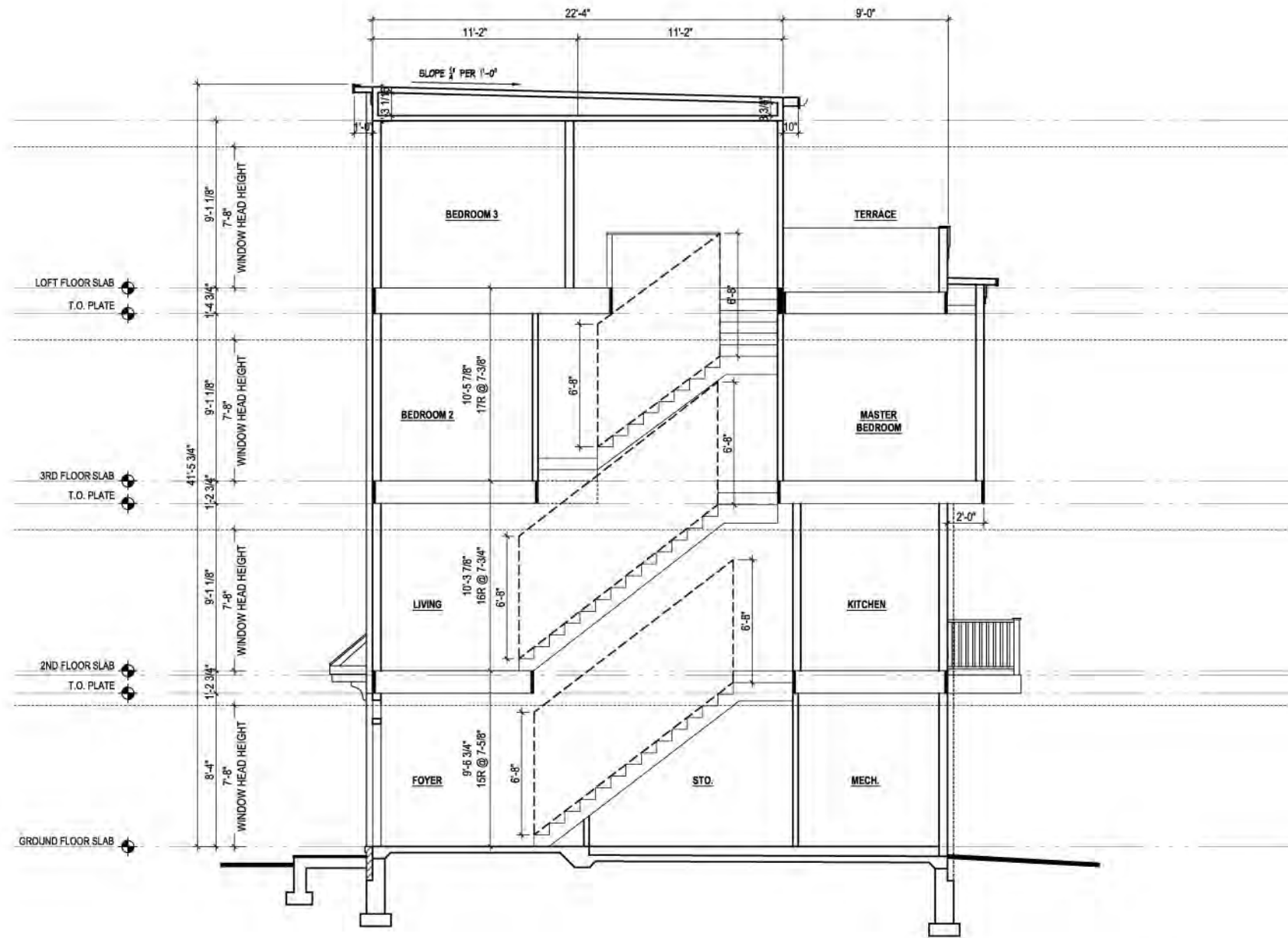
BROOKLAND TOWNHOMES Washington, DC

MADISON HOMES

A.109



05/07/15
MHI.009A.00D



INTERIOR PLAN LAYOUTS ARE CONCEPTUAL AND FOR ILLUSTRATIVE PURPOSES; FINAL LAYOUTS MAY VARY.

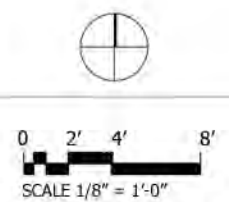
CONCEPTUAL SECTION

BROOKLAND TOWNHOMES
Washington, DC

A.200

14' X 32' A.D.U. UNIT
PUD APPLICATION

MADISON HOMES

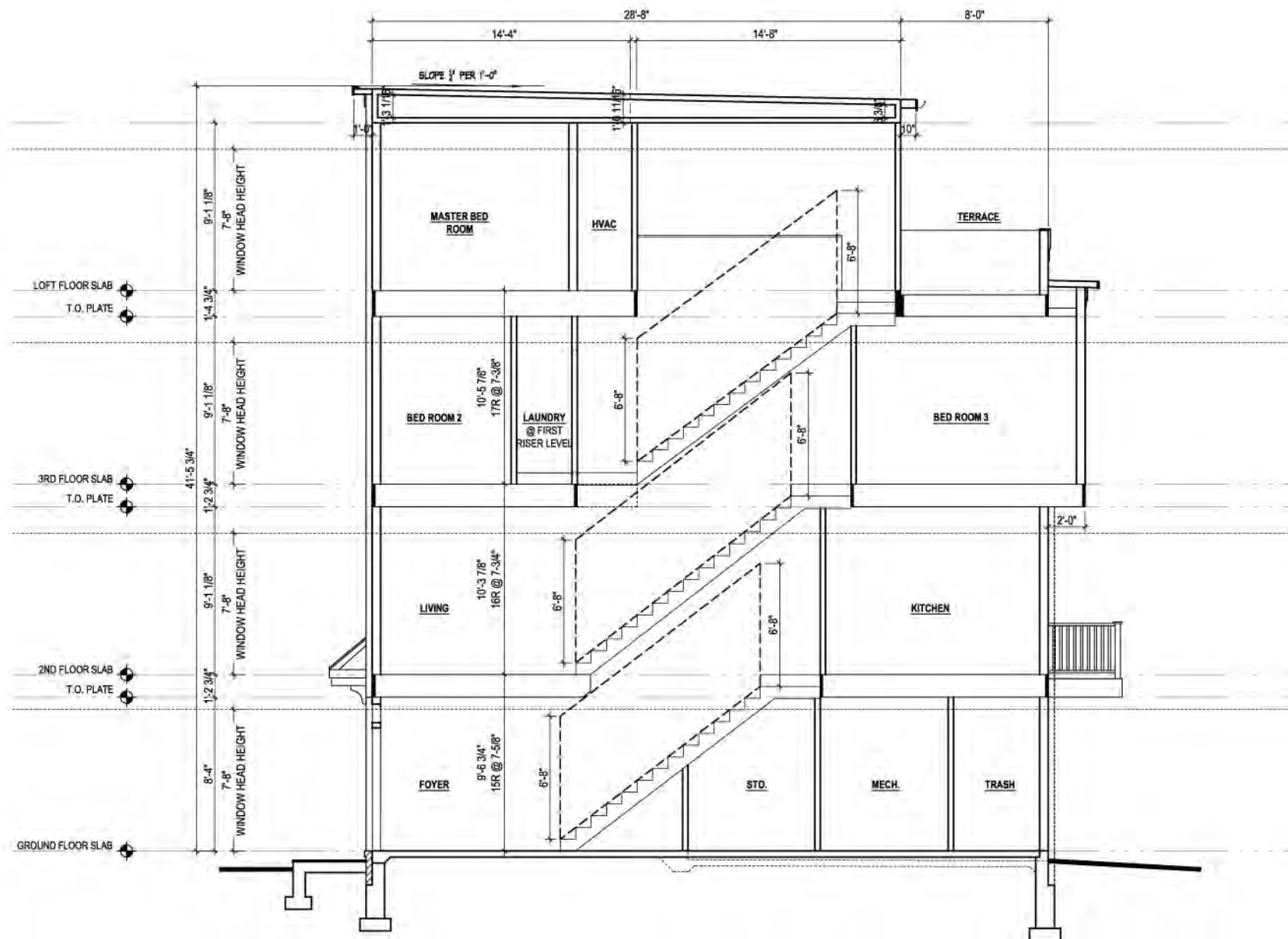


05/07/15
MHI.009A.00D



8521 Leesburg Pike Suite 700 Vienna, VA 22182
P: 571.830.1800 | F: 571.830.1801 | www.lessarddesign.com

© 2013 Lessard Design Inc. expressly reserves its common law copyright and other property rights in these plans. These plans are not to be changed or copied in any form or matter whatsoever, nor are they to be assigned to any third party without the express written permission and consent of Lessard Design, Inc.



INTERIOR PLAN LAYOUTS ARE CONCEPTUAL AND FOR ILLUSTRATIVE PURPOSES; FINAL LAYOUTS MAY VARY.

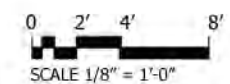
CONCEPTUAL SECTION

BROOKLAND TOWNHOMES
Washington, DC

A.201

14' X 37' UNIT
PUD APPLICATION

MADISON HOMES

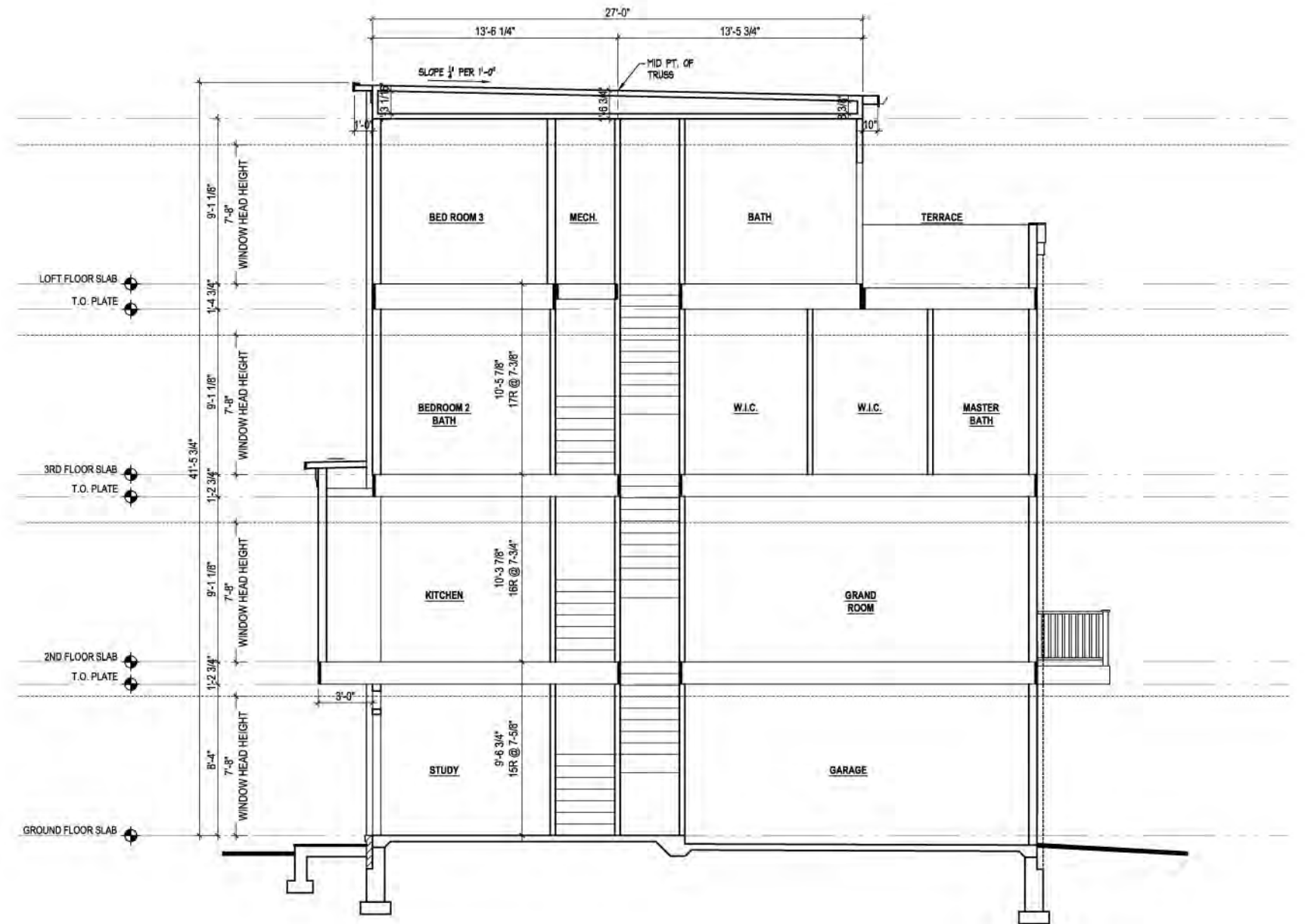
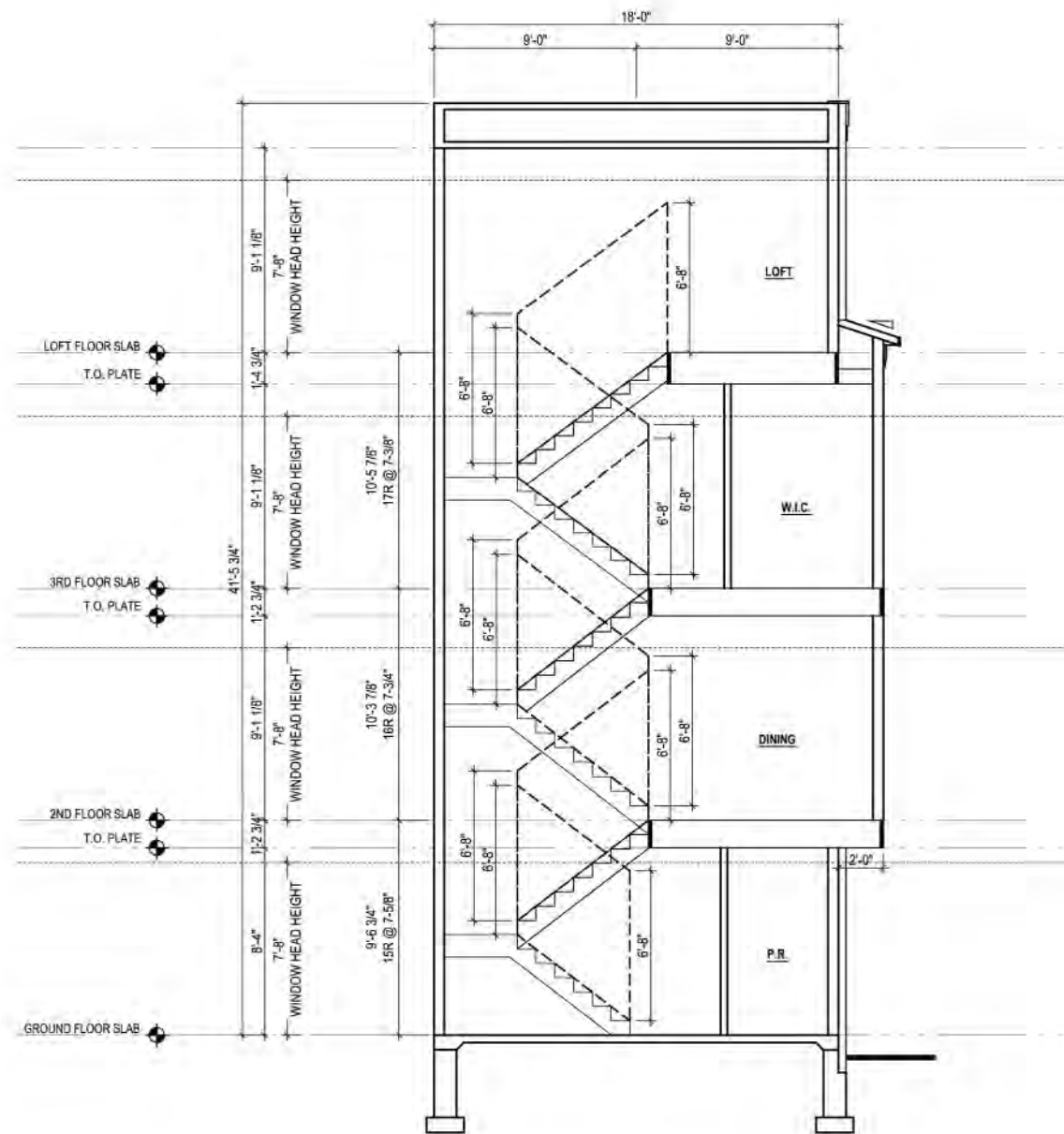


05/07/15
MHI.009A.000



8521 Leesburg Pike Suite 700 Vienna, VA 22182
P: 571.830.1800 | F: 571.830.1801 | www.lessarddesign.com

© 2013 Lessard Design Inc. expressly reserves its common law copyright and other property rights in these plans. These plans are not to be changed or copied in any form or matter whatsoever, nor are they to be assigned to any third party without the express written permission and consent of Lessard Design, Inc.



INTERIOR PLAN LAYOUTS ARE CONCEPTUAL AND FOR ILLUSTRATIVE PURPOSES; FINAL LAYOUTS MAY VARY.



8521 Leesburg Pike Suite 700 Vienna, VA 22182
 P: 571.830.1800 | F: 571.830.1801 | www.lessarddesign.com

© 2013 Lessard Design Inc. expressly reserves its common law copyright and other property rights in these plans. These plans are not to be changed or copied in any form or matter whatsoever, nor are they to be assigned to any third party without the express written permission and consent of Lessard Design, Inc.

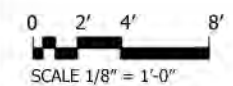
CONCEPTUAL SECTION

18' X 37' UNIT
 PUD APPLICATION

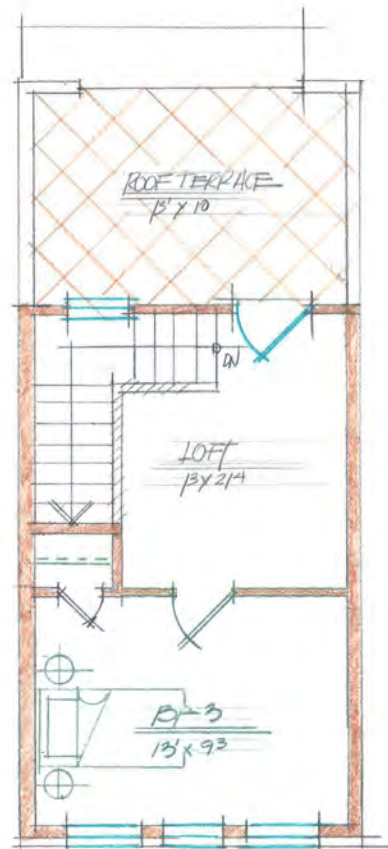
BROOKLAND TOWNHOMES
 Washington, DC

MADISON HOMES

A.202

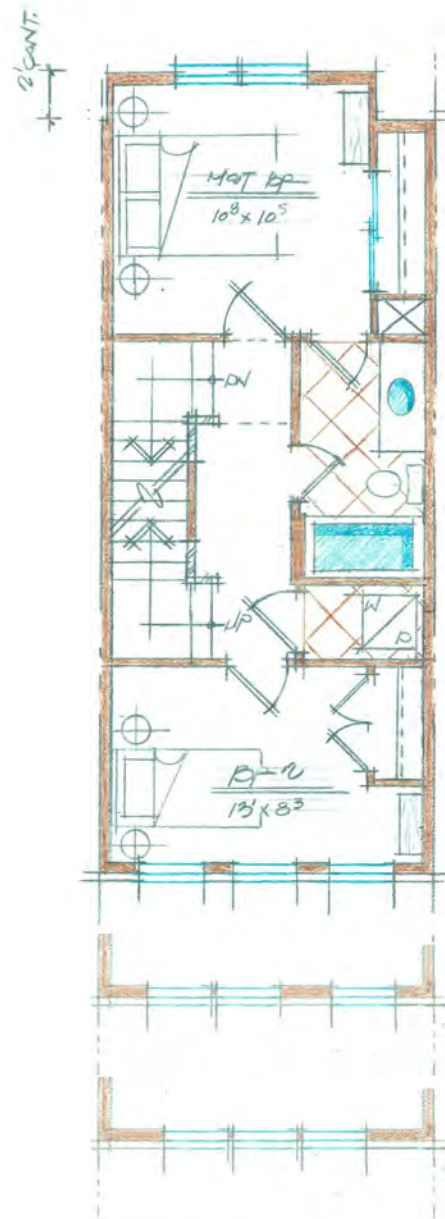


05/07/15
 MHI.009A.00D



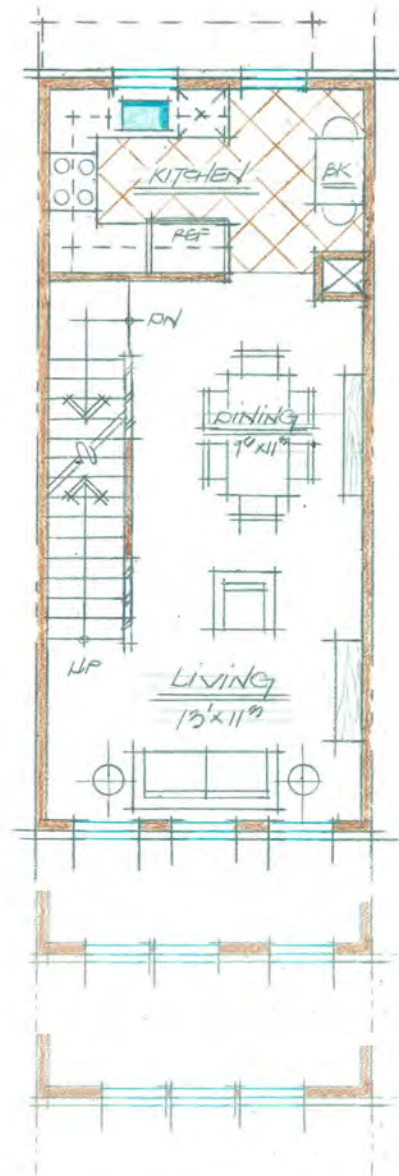
LOFT FLOOR PLAN

13'03" ± 9'0" clg



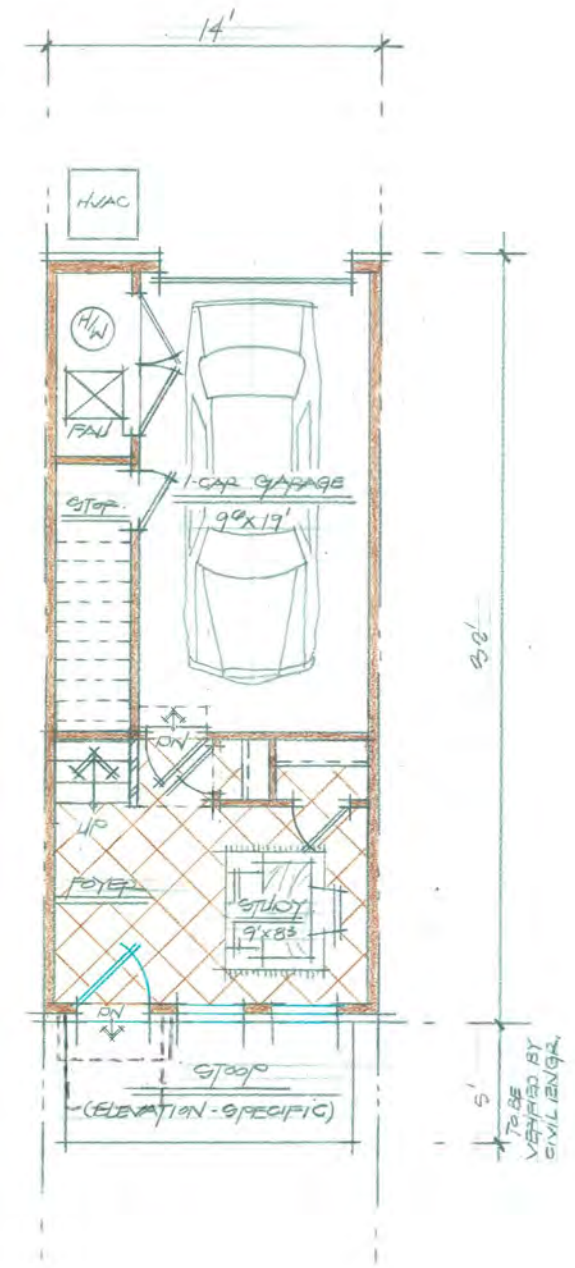
3RD FLOOR PLAN

14'02" ± 9'0" clg



2ND FLOOR PLAN

14'09" ± 9'0" clg



1ST FLOOR PLAN

16'05" ± TOTAL = 14'04" ± 8'0" clg

INTERIOR PLAN LAYOUTS ARE CONCEPTUAL AND FOR ILLUSTRATIVE PURPOSES; FINAL LAYOUTS MAY VARY.

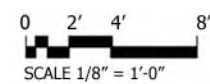
CONCEPTUAL FLOOR PLANS

BROOKLAND TOWNHOMES
Washington, DC

A.300

14' X 32' A.D.U. UNIT
PUD APPLICATION

MADISON HOMES

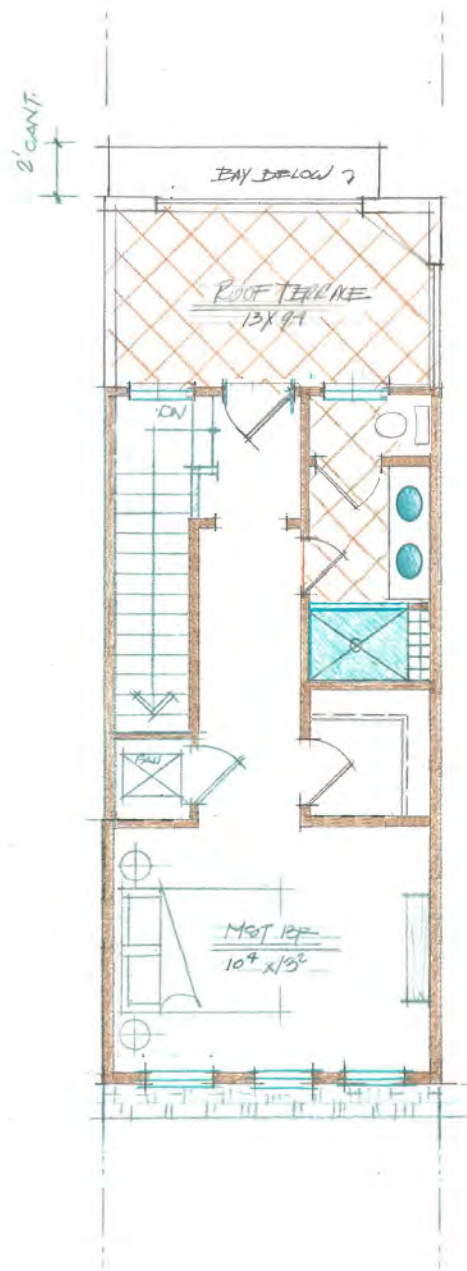


05/07/15
MHI.009A.00D



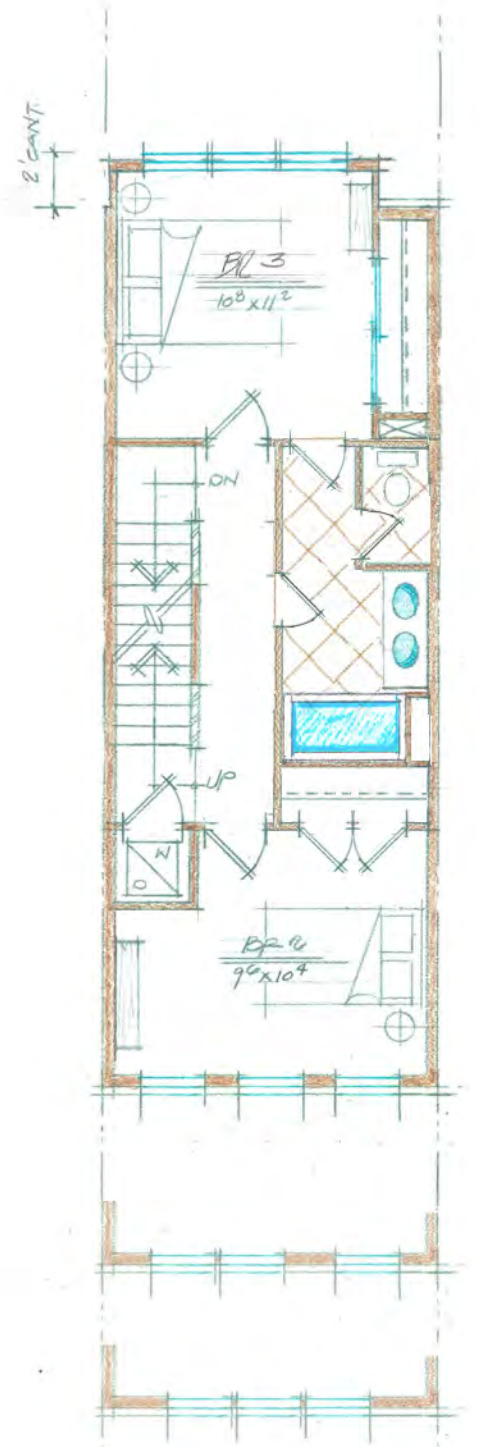
8521 Leesburg Pike Suite 700 Vienna, VA 22182
P: 571.830.1800 | F: 571.830.1801 | www.lessarddesign.com

© 2013 Lessard Design Inc. expressly reserves its common law copyright and other property rights in these plans. These plans are not to be changed or copied in any form or matter whatsoever, nor are they to be assigned to any third party without the express written permission and consent of Lessard Design, Inc.



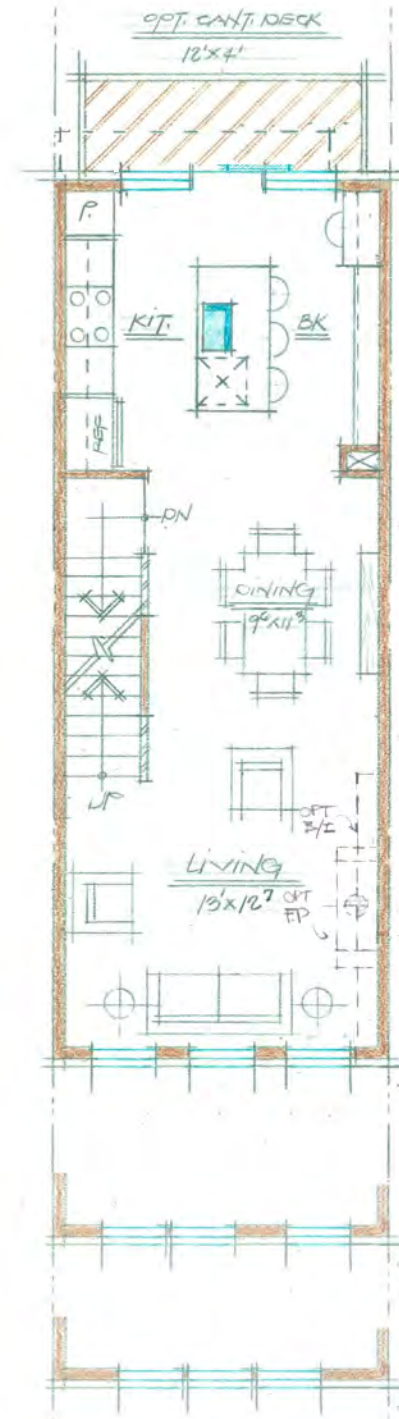
LOFT FLOOR PLAN

9'8 1/2" ± 9'1" clg



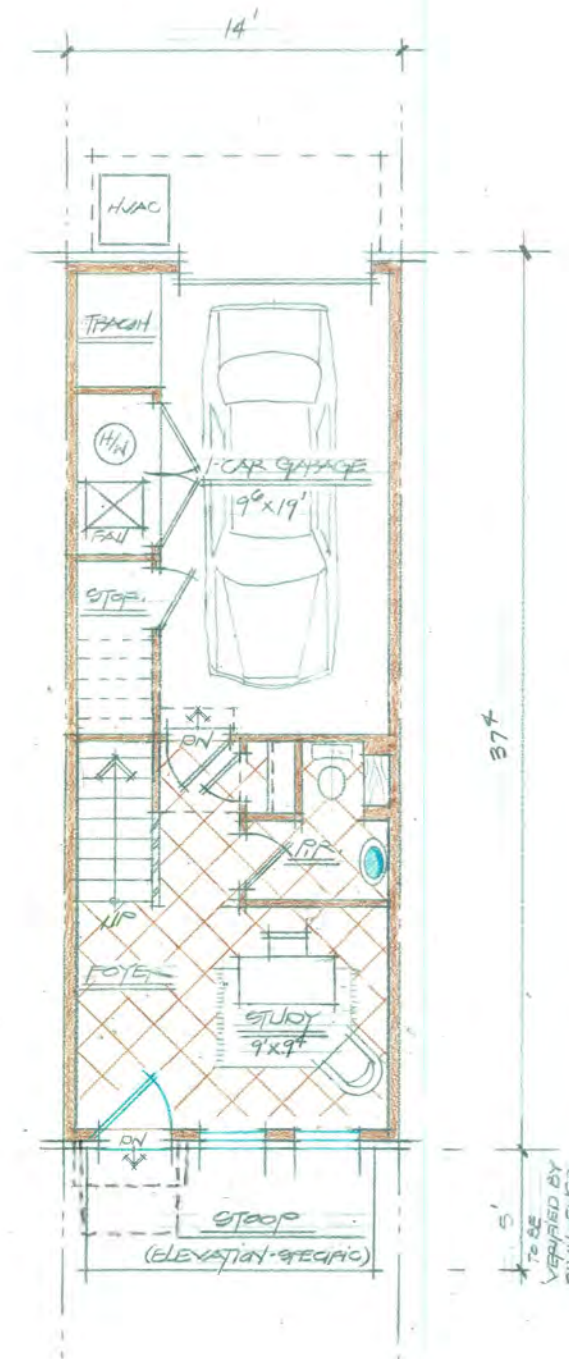
1ST FLOOR PLAN

5'35" ± 9'1" clg



2ND FLOOR PLAN

5'19" ± 9'1" clg



1ST FLOOR PLAN

0'9" ± TOTAL=16'7" ± 8' clg

INTERIOR PLAN LAYOUTS ARE CONCEPTUAL AND FOR ILLUSTRATIVE PURPOSES; FINAL LAYOUTS MAY VARY.



8521 Leesburg Pike Suite 700 Vienna, VA 22182
P: 571.830.1800 | F: 571.830.1801 | www.lessarddesign.com

© 2013 Lessard Design Inc. expressly reserves its common law copyright and other property rights in these plans. These plans are not to be changed or copied in any form or matter whatsoever, nor are they to be assigned to any third party without the express written permission and consent of Lessard Design, Inc.

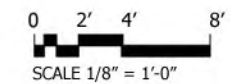
CONCEPTUAL FLOOR PLANS

BROOKLAND TOWNHOMES
Washington, DC

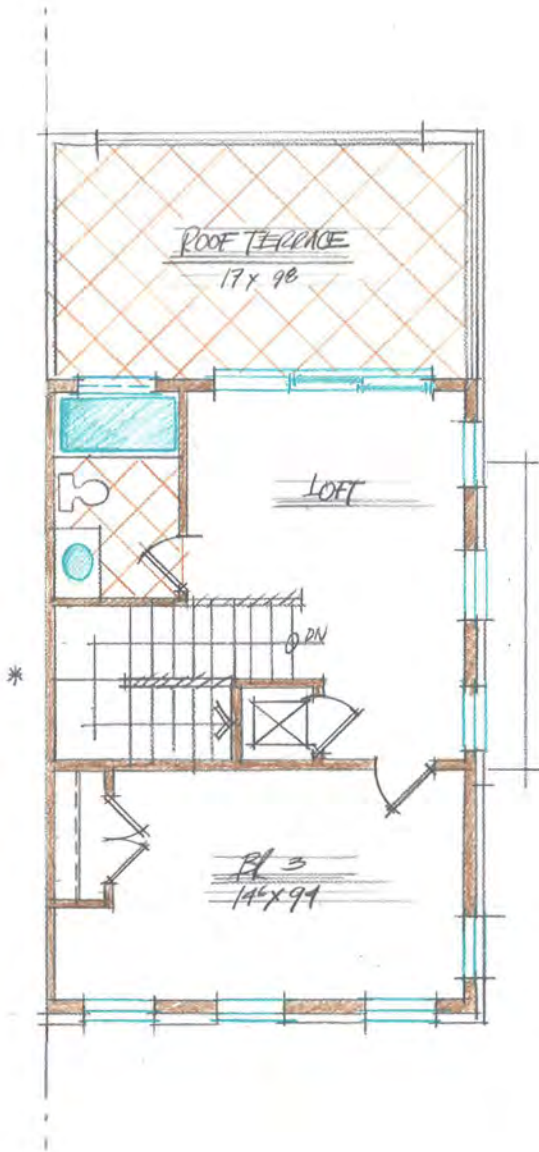
A.301

14' X 37' UNIT
PUD APPLICATION

MADISON HOMES



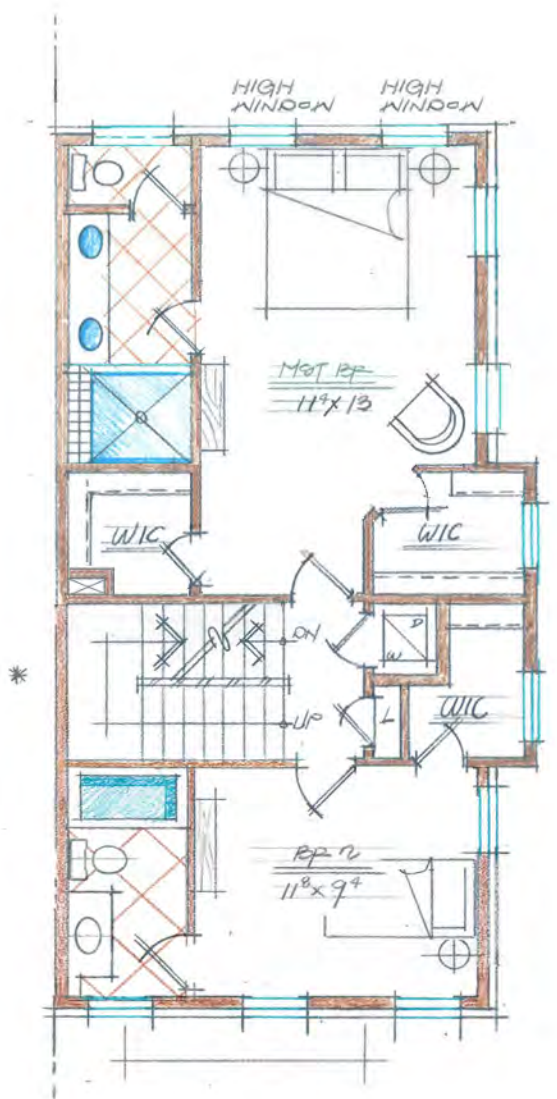
05/07/15
MHI.009A.00D



LOFT FLOOR PLAN

480 sq ft 9' cldg

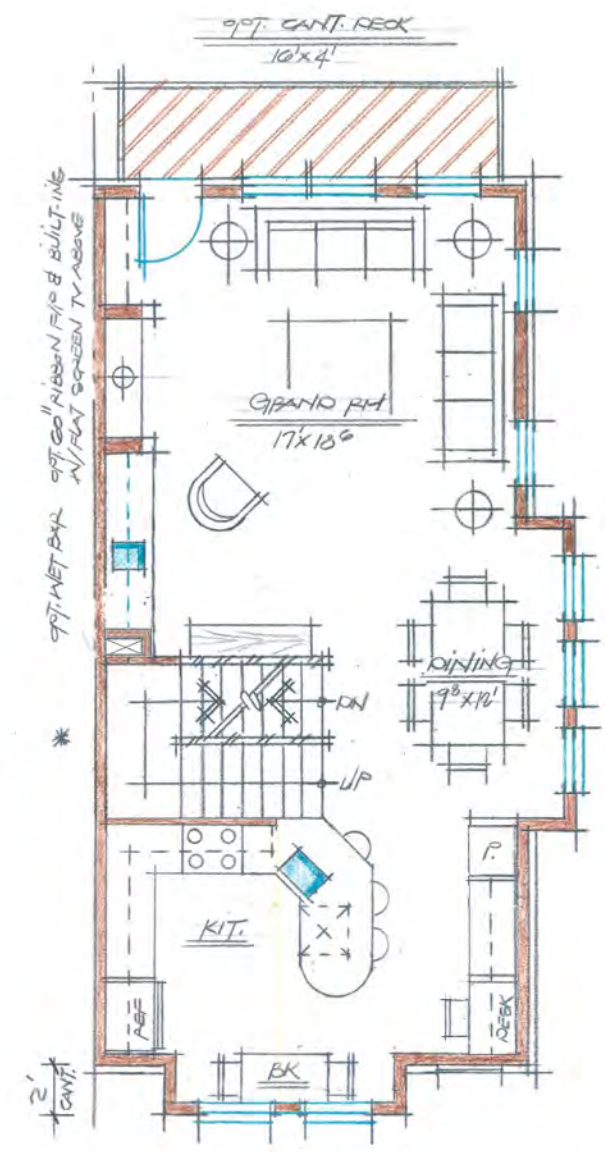
* NOTE:
W/ OPT. 1ST FLR. PLAN, REVERSE
STAIR DIRECTIONS @ 2ND, 3RD, & LOFT FLRS.



1ST FLOOR PLAN

660 sq ft 9' cldg

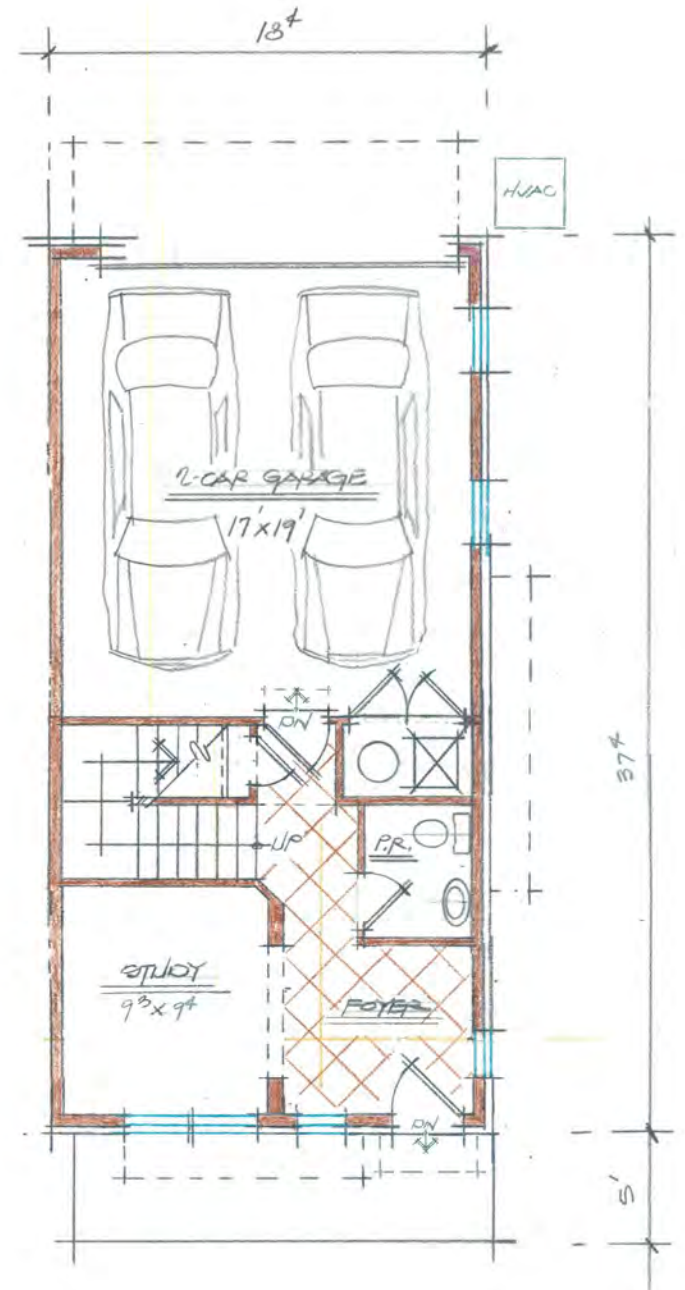
* NOTE:
W/ OPT. 1ST FLR. PLAN, REVERSE
STAIR DIRECTIONS @ 2ND, 3RD, & LOFT FLRS.



2ND FLOOR PLAN

717 sq ft 9' cldg

* NOTE:
W/ OPT. 1ST FLR. PLAN, REVERSE
STAIR DIRECTIONS @ 2ND, 3RD, & LOFT FLRS.



1ST FLOOR PLAN

306 sq ft total = 216 sq ft 8' cldg

INTERIOR PLAN LAYOUTS ARE CONCEPTUAL AND FOR ILLUSTRATIVE PURPOSES; FINAL LAYOUTS MAY VARY.



8521 Leesburg Pike Suite 700 Vienna, VA 22182
P: 571.830.1800 | F: 571.830.1801 | www.lessarddesign.com

© 2013 Lessard Design Inc. expressly reserves its common law copyright and other property rights in these plans. These plans are not to be changed or copied in any form or matter whatsoever, nor are they to be assigned to any third party without the express written permission and consent of Lessard Design, Inc.

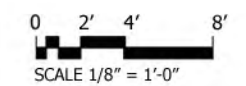
CONCEPTUAL FLOOR PLANS

BROOKLAND TOWNHOMES
Washington, DC

A.302

18' X 37' UNIT
PUD APPLICATION

MADISON HOMES



05/07/15
MHI.009A.00D