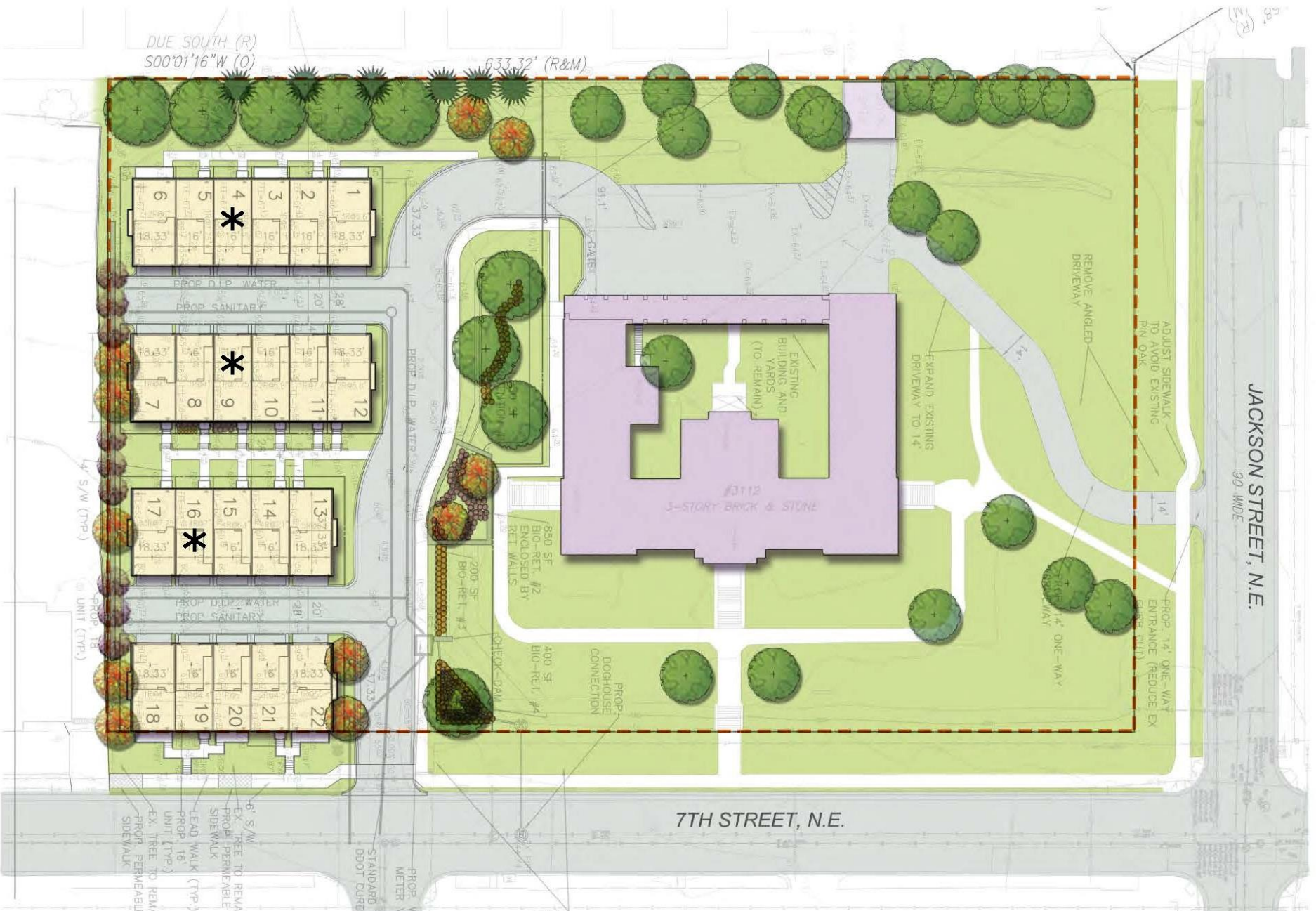


BROOKLAND TOWNHOMES

ZC # 15-02, Public Hearing #2, December 15, 2016

Co-Applicant/Contract Purchaser: MHI-Brookland, LLC, c/o Madison Homes
Co-Applicant/Owner: The Redemptorists
Land Use Counsel: Goulston & Storrs
Architect: Lessard Design
Engineer/Landscape Arch: VIK A Capitol
Transportation Consultant: Gorove/Slade Associates





Current submission

PROPOSED TOWNHOMES

EXISTING BUILDING

* I.Z. UNIT



Current submission



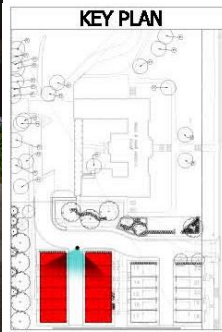
Previous submission



Current submission



Current submission





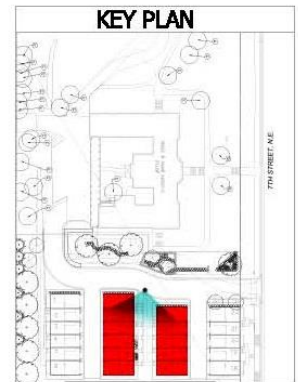
Current submission



Previous submission



Current submission





Current submission



Previous submission



REPRESENTATIVE REAR ELEVATION

LOT #6
18' UNIT
ELEV. #1

LOT #5
18' UNIT
ELEV. #2

LOT #4
16' I.Z. UNIT
ELEV. #3

LOT #3
18' UNIT
ELEV. #1

LOT #2
18' UNIT
ELEV. #2

LOT #1
18' UNIT
ELEV. #1



SIDE ELEVATION

LOT #1
18' UNIT
ELEV. #1

FRONT ELEVATION

LOT #1
18' UNIT
ELEV. #1

LOT #2
18' UNIT
ELEV. #2

LOT #3
18' UNIT
ELEV. #1

LOT #4
16' I.Z. UNIT
ELEV. #3

LOT #5
18' UNIT
ELEV. #2

LOT #6
18' UNIT
ELEV. #1

SIDE ELEVATION

LOT #6
18' UNIT
ELEV. #1

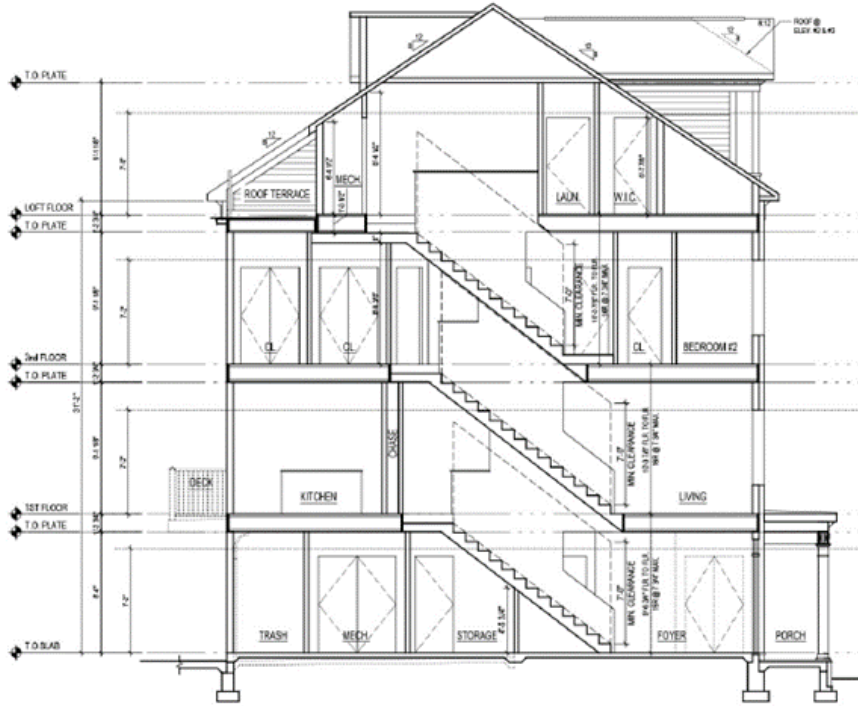
Current submission



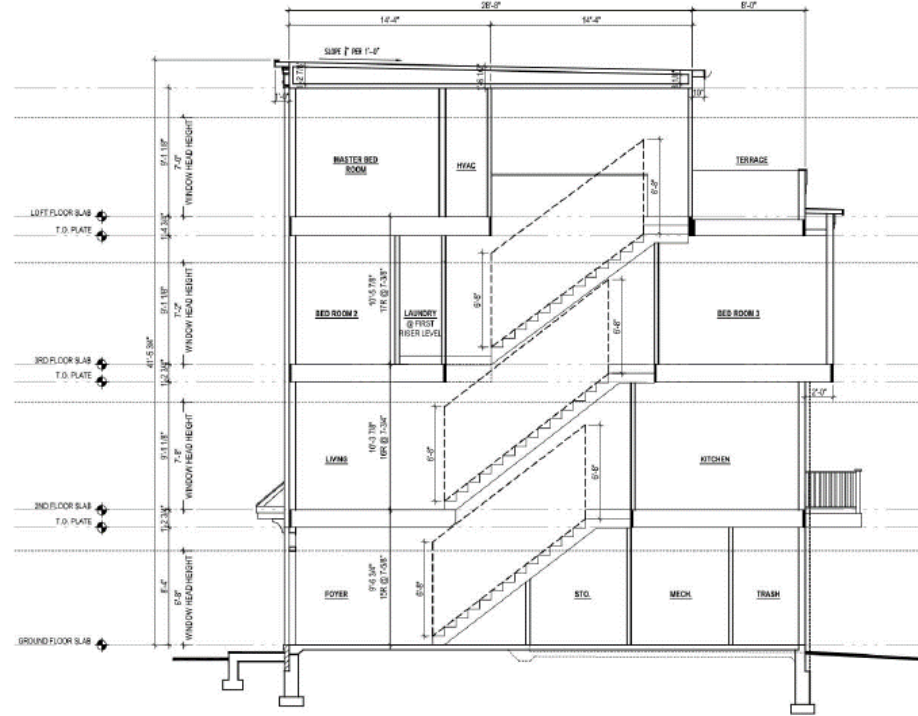
Current submission



Previous submission



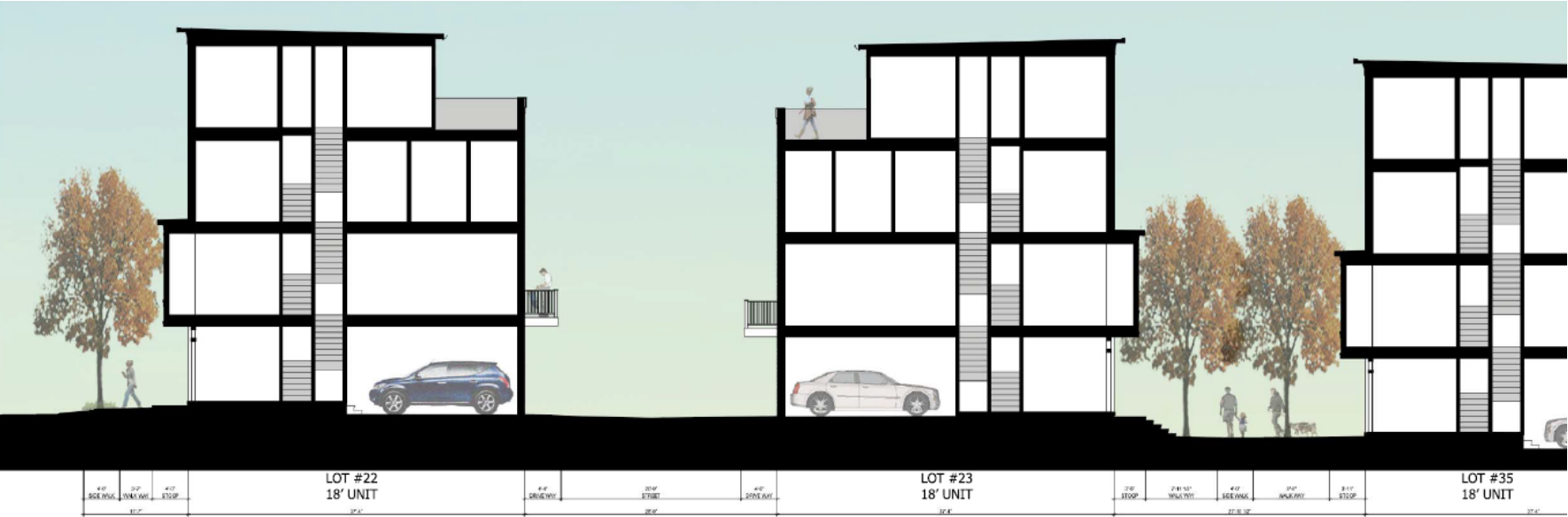
Typical section
Current submission



Typical section
Previous submission



Typical alley section
Current submission



Typical alley section
Previous submission

Holy Redeemer College
Existing Front



Holy Redeemer College
Existing North Façade

BROOKLAND TOWNHOMES

