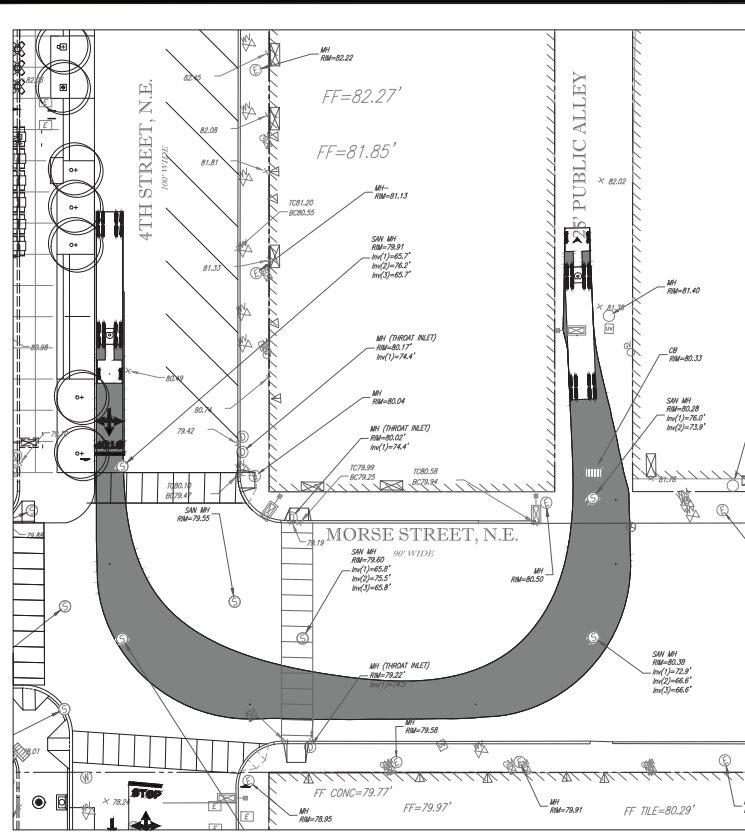


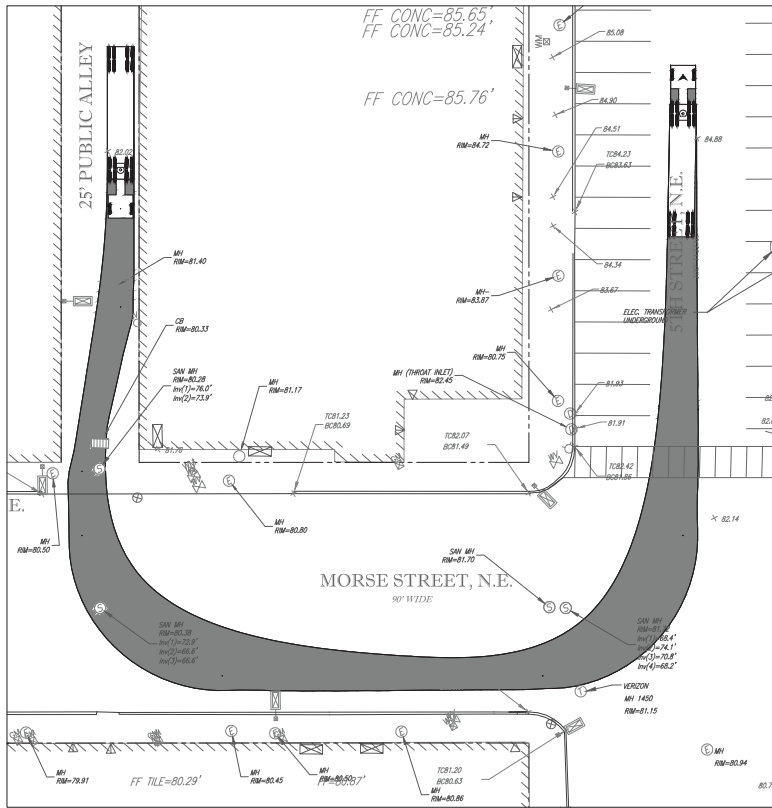
PRELIMINARY
CIVIL DRAWINGS
FOR ILLUSTRATIVE
PURPOSE ONLY
AND SUBJECT TO
CHANGE IN FINAL
DESIGN

BOHLER DC
SITE AND CONSULTING ENGINEERING
LAND SURVEYING PROGRAM MANAGEMENT LANDSCAPE ARCHITECTURE
SUSTAINABLE DESIGN PERMITTING SERVICES TRANSPORTATION SERVICES

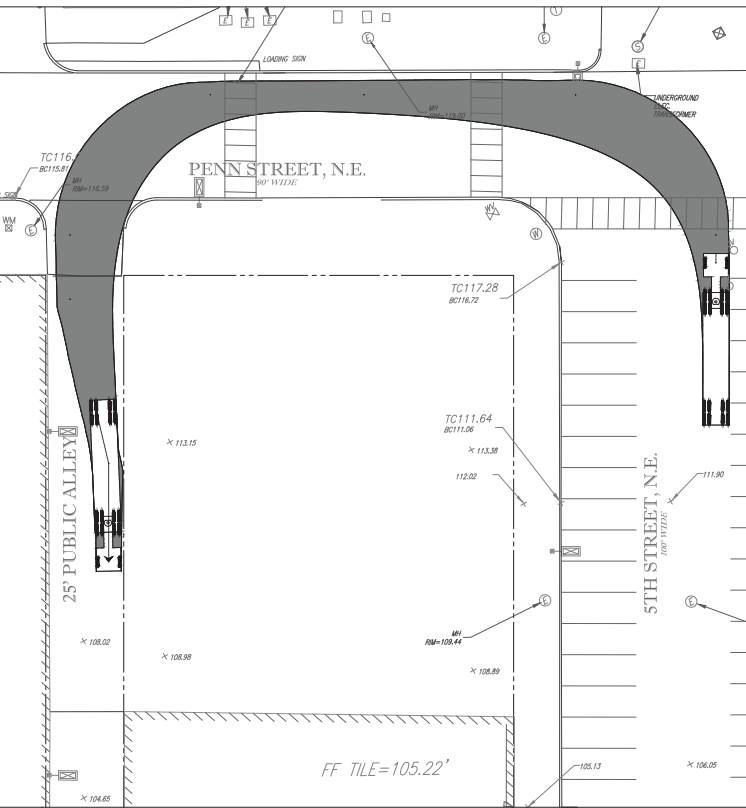
REV	DATE	COMMENT	BY



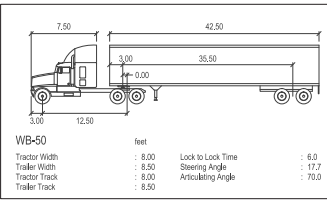
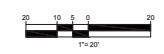
4TH STREET, LEFT ON MORSE LEFT INTO ALLEY
SCALE 1" = 20'



ALLEY, LEFT ON MORSE LEFT ONTO 5TH STREET
SCALE 1" = 20'



5TH STREET, LEFT ON PENN, LEFT INTO ALLEY
SCALE 1" = 20'



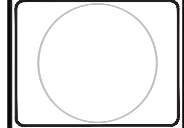
NOT APPROVED FOR CONSTRUCTION

PROJECT NO: DC12121
DRAWN BY: JCB
CHECKED BY: KAR
DATE: 12/15
SCALE: 1" = 20'
LOAD ID: 1554

PROJECT: PUD PRESENTATION PLAN FOR EDENS

LOCATION OF SITE
FLORIDA AVE., NE
WASHINGTON, DC

BOHLER DC
1301 PENNSYLVANIA AVE., NW, STE. 825
WASHINGTON, DC 20004
Phone: (202) 524-5700
Fax: (202) 524-5701
DC@BohlerEng.com



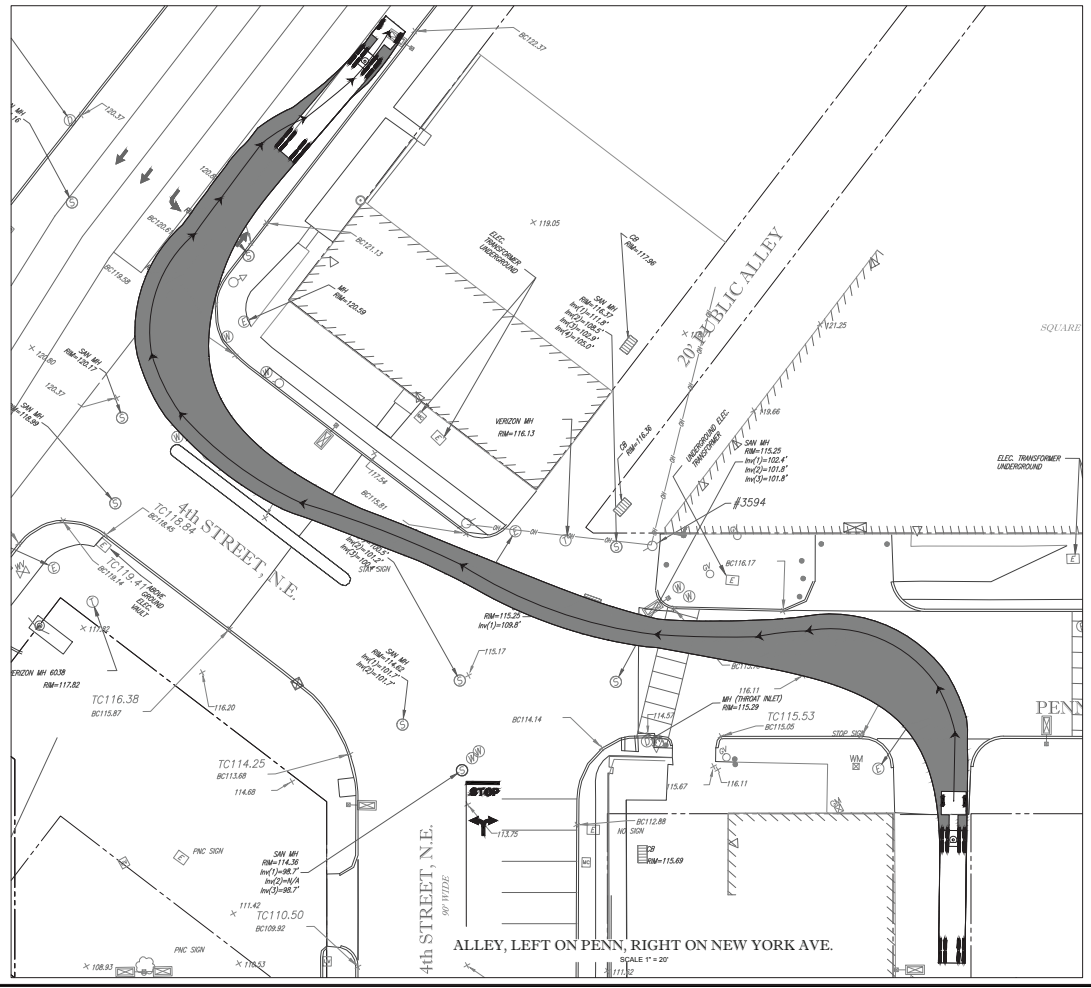
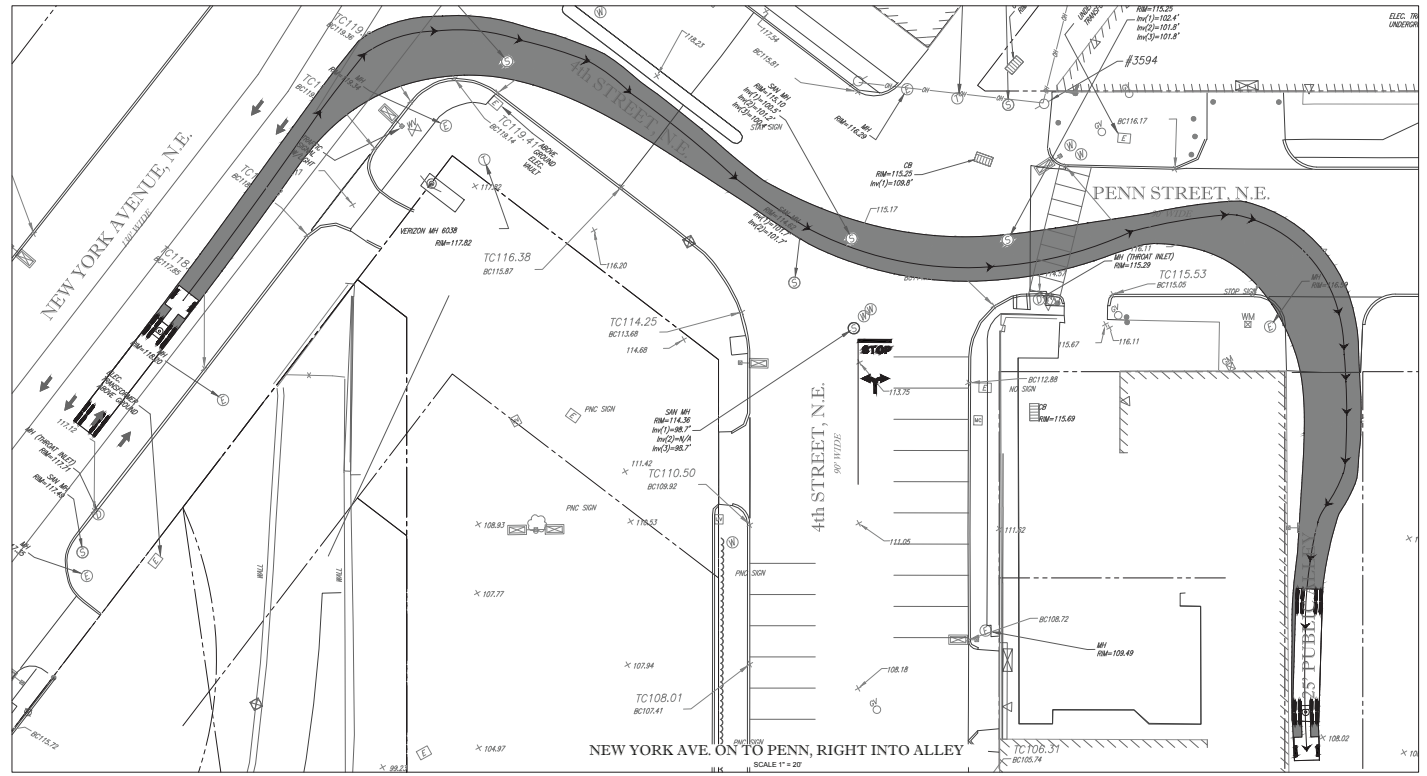
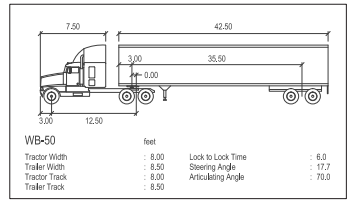
SHEET TITLE
TRUCK TURN ACCESS PLAN

SHEET NUMBER
C-303

PRELIMINARY
CIVIL DRAWINGS
FOR ILLUSTRATIVE
PURPOSE ONLY
AND SUBJECT TO
CHANGE IN FINAL
DESIGN

BOHLER DC
SITE DESIGN AND CONSULTING ENGINEERING
LAND SURVEYING PROGRAM MANAGEMENT LANDSCAPE ARCHITECTURE
SUSTAINABLE DESIGN PERMITTING SERVICES TRANSPORTATION SERVICES

REVISIONS			
REV	DATE	COMMENT	BY



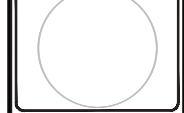
NOT APPROVED FOR CONSTRUCTION

PROJECT NO: DC12123
DRAWN BY: JCB
CHECKED BY: KAR
DATE: 12/20/15
SCALE: 1" = 20'
SHEET ID: 304

PROJECT: PUD PRESENTATION PLAN FOR EDENS

LOCATION OF SITE: FLORIDA AVE., NE WASHINGTON, DC

BOHLER DC
1301 PENNSYLVANIA AVE., NW, STE. 825
WASHINGTON, DC 20004
Phone: (202) 524-5700
Fax: (202) 524-5701
DC@BohlerEng.com



SHEET TITLE: TRUCK TURN ACCESS PLAN

SHEET NUMBER: C-304