

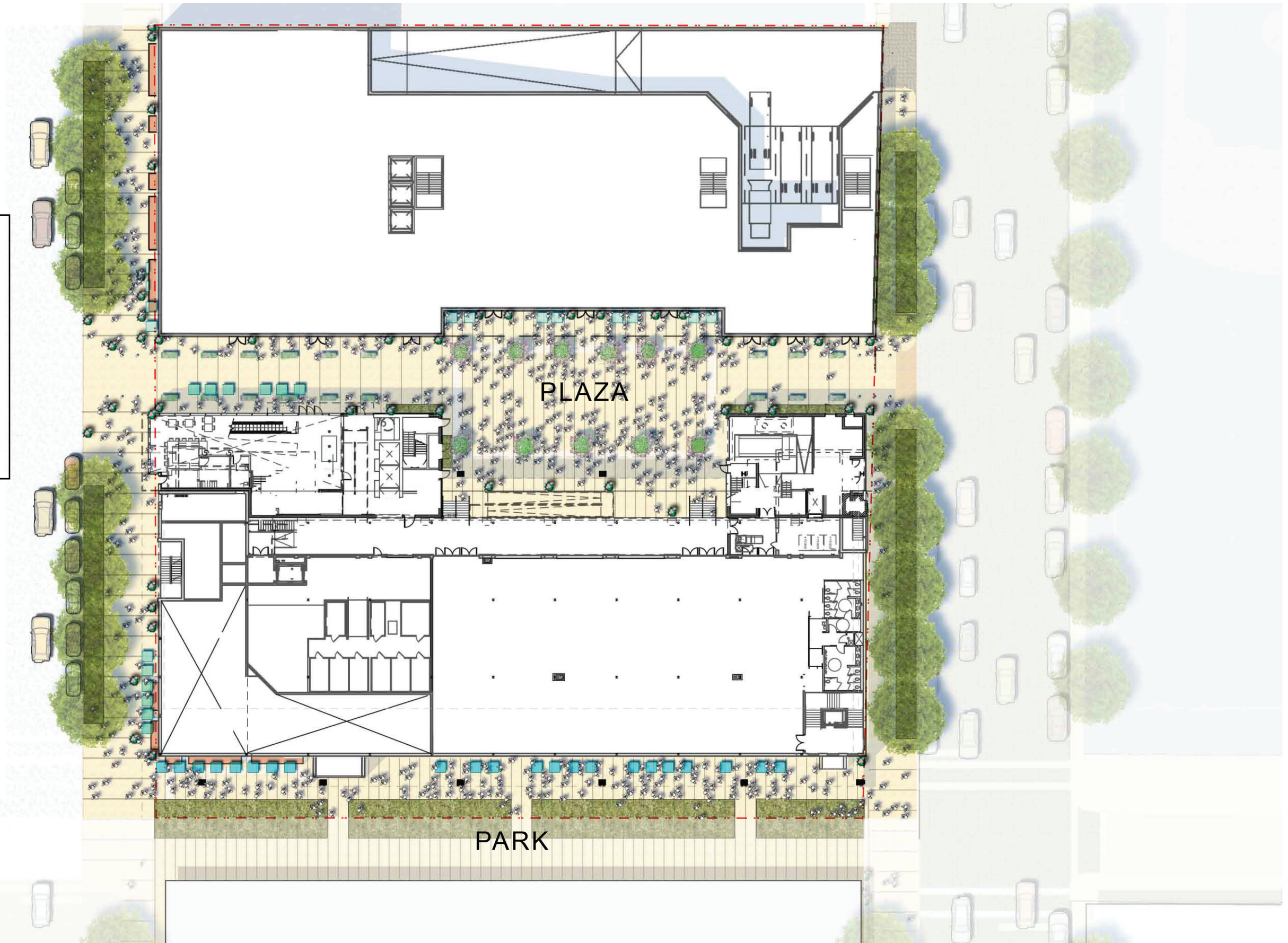
LEGEND

- HARDSCAPE - SEE NEXT PAGE
- PLANTINGS
- SITE FURNITURE
WILL BE MOVABLE TO ALLOW
FOR PROGRAMATIC FLEXIBILITY

NEAL PLACE



0 40 Ft.



1309 - 1329 5TH STREET NE WASHINGTON, DC

PUD SUBMISSION 2014 JULY 3
(REVISED 2015 JANUARY 30)

LANDSCAPE - OVERALL SITE PLAN L 1

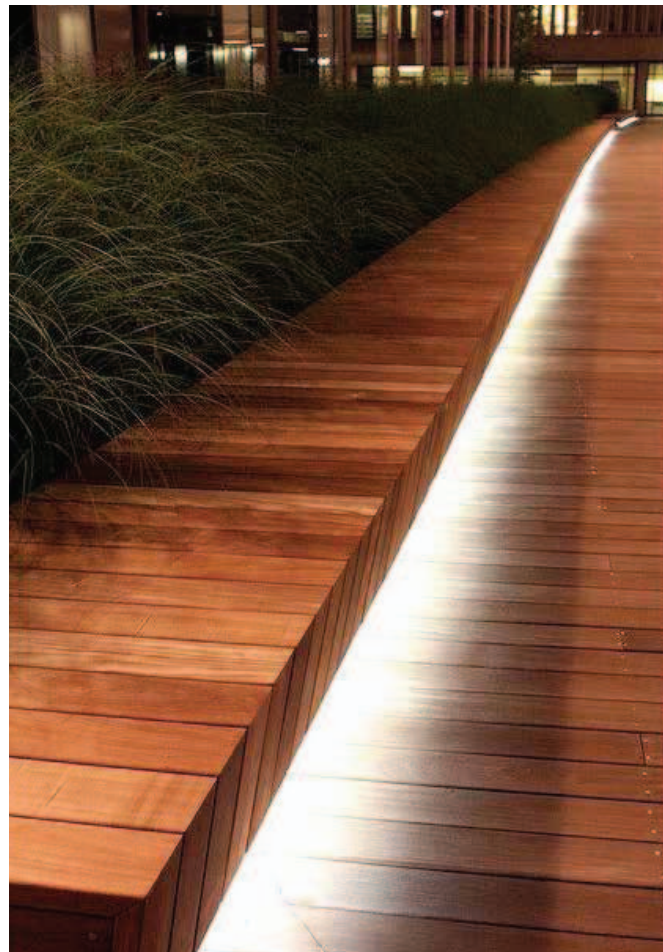
MATERIAL OPTIONS

pavers
 wood decks
 steel
 cast in place concrete

pavers (asphalt, concrete, clay and or stone)



wood decks and boardwalks



steel for edges, drain covers, guardrails and handrails, etc.



cast in place concrete

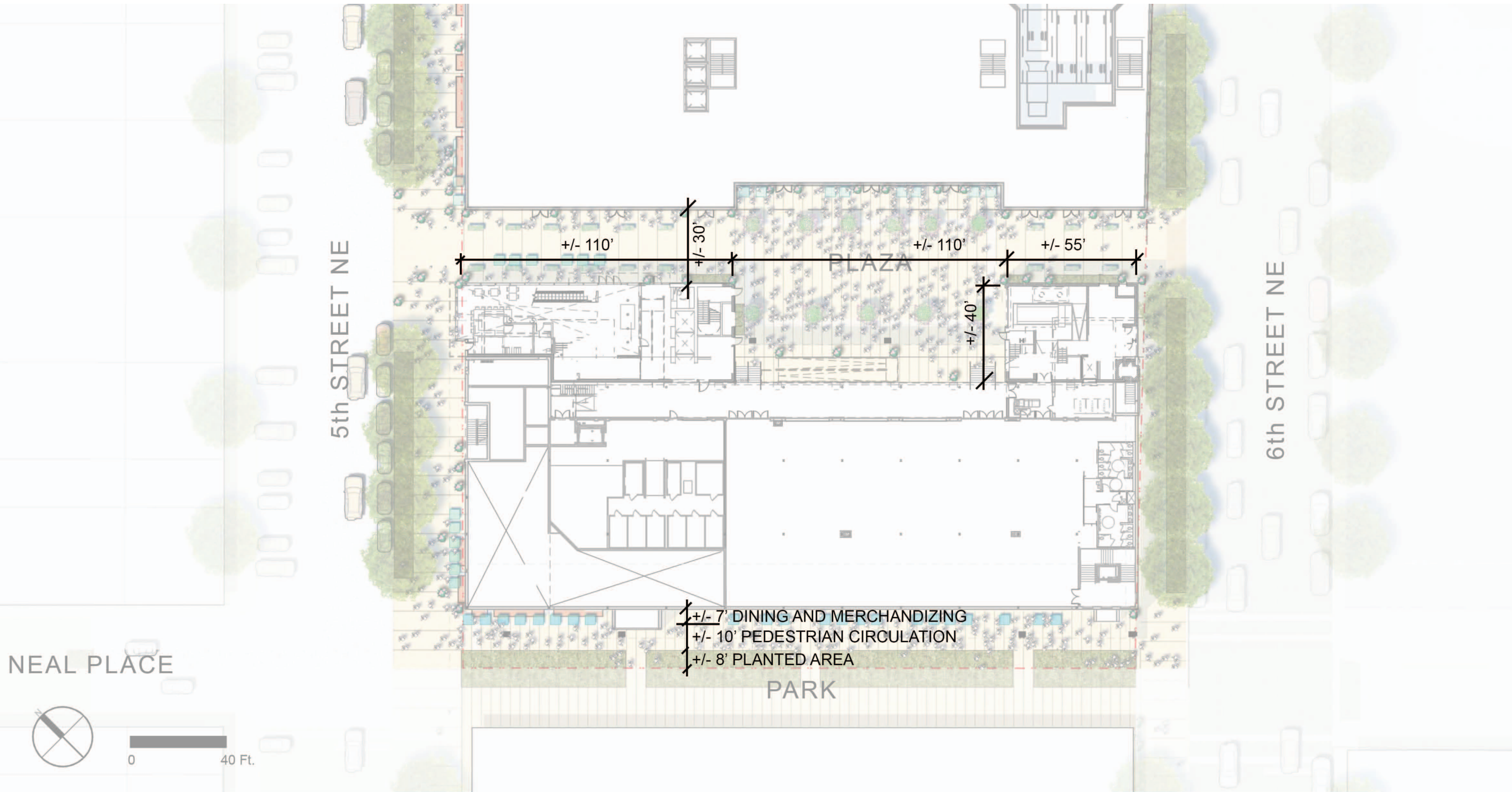


1309 - 1329 5TH STREET NE WASHINGTON, DC

PUD SUBMISSION 2014 JULY 3
 (REVISED 2015 JANUARY 30)

LANDSCAPE - MATERIALS

L2



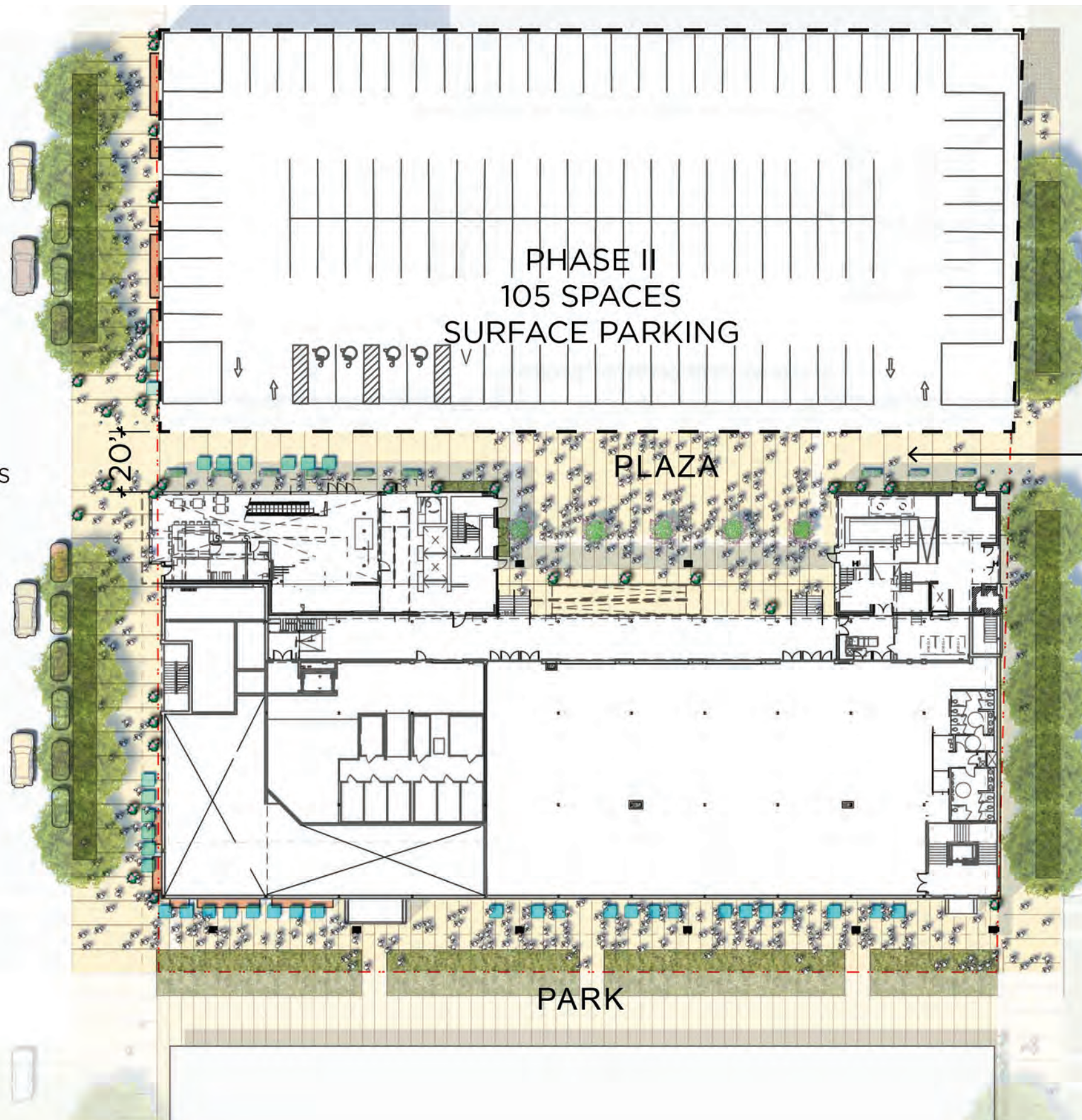
1309 - 1329 5TH STREET NE WASHINGTON, DC

PUD SUBMISSION 2014 JULY 3
(REVISED 2015 JANUARY 30)

LANDSCAPE - PLAN WITH DIMENSIONS

L3

* FOR ADDITIONAL SAMPLE OF MATERIALS
PLEASE SEE MATERIAL SAMPLES PAGE



PRIOR TO THE COMPLETION OF THE NORTH BUILDING IN PHASE II, THE PRIMARY PLAZA MATERIAL WILL BE SCORED CONCRETE. THE SPACE WILL ALSO INCLUDE PLANTING BEDS AGAINST THE SOUTH BUILDING FOR GROUNDCOVERS, SHRUBS AND CLIMBING VINES. FURNITURE AND PLANTERS WILL GENERALLY BE MOVABLE TO MAXIMIZE THE FLEXIBILITY OF THE SPACE.

NEAL PLACE



0 40 Ft.

1309 - 1329 5TH STREET NE WASHINGTON, DC

PUD SUBMISSION 2014 JULY 3
(REVISED 2015 JANUARY 30)

LANDSCAPE - INTERIM L 4