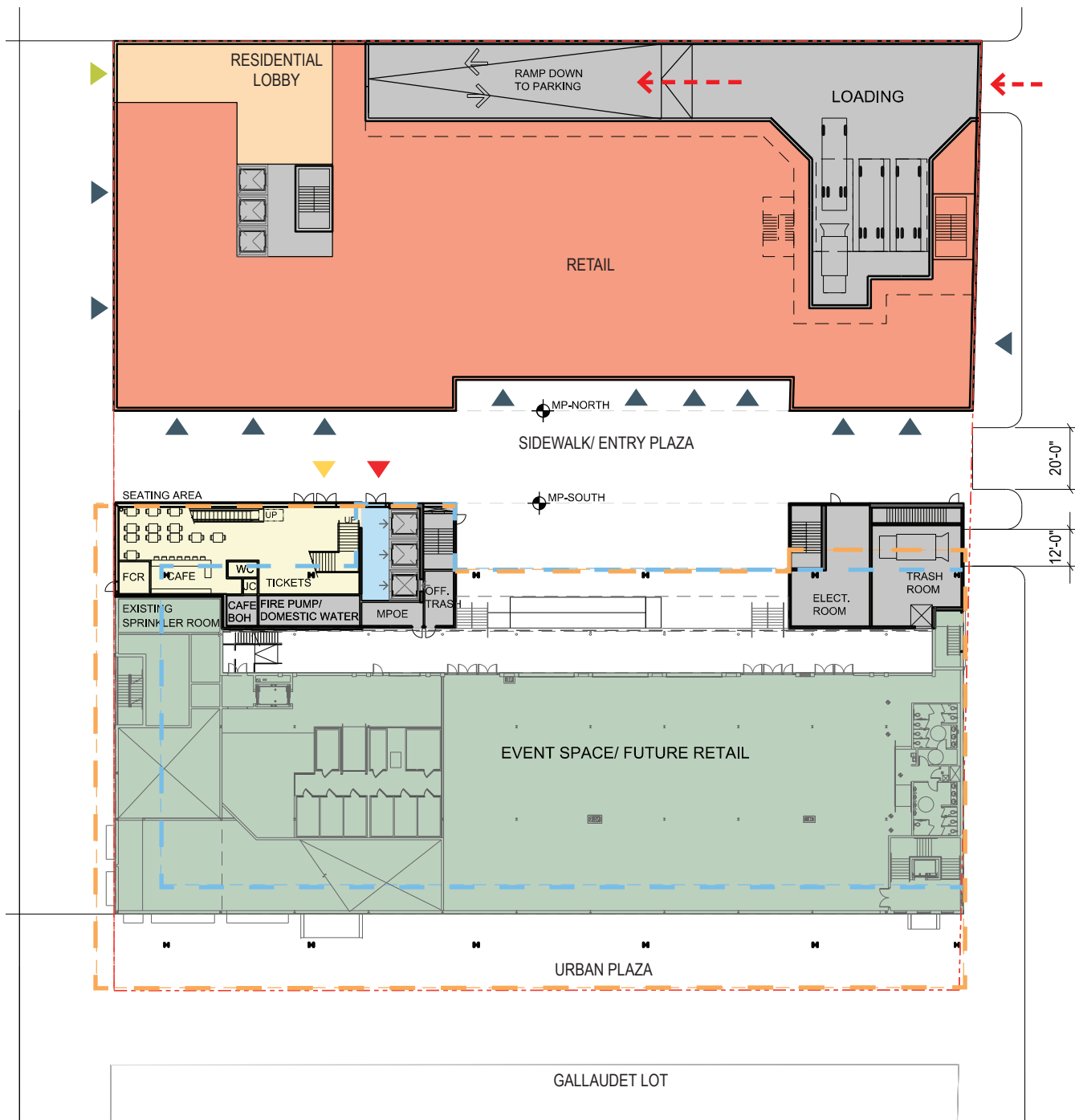
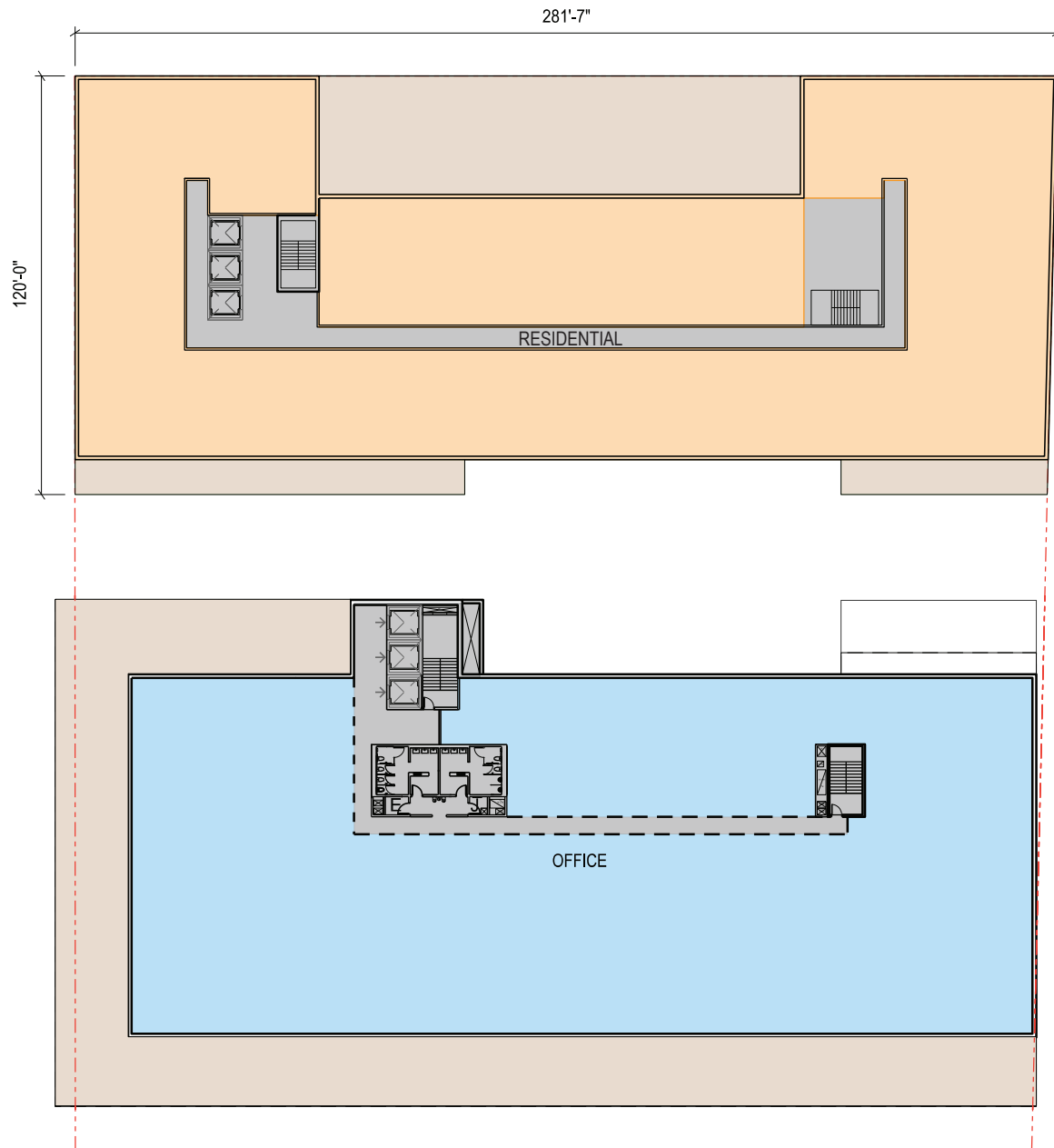


EXHIBIT E-3



EVENT LEVEL PLAN



TYPICAL PLAN

NOTES:

1. REFER TO ROOF PLAN FOR OVERALL BUILDING DIMENSIONS.
2. THE EXTERIOR ELEVATIONS, INCLUDING DOOR AND WINDOW SIZES, NUMBER, AND LOCATIONS, THE INTERIOR PARTITION LOCATIONS, THE NUMBER, SIZE, AND LOCATIONS OF THEATER BOXES, OUTDOOR SPACE, STAIRS, BALCONY, TERRACES, AND ELEVATORS ARE PRELIMINARY AND SHOWN FOR ILLUSTRATIVE PURPOSES ONLY. THE PARKING GARAGE LAYOUT IS SHOWN FOR ILLUSTRATIVE PURPOSES ONLY.
3. ALL SPOT ELEVATIONS ARE RELATIVE TO THE MEASURING POINT, ASSUMED FOR THESE DRAWINGS TO BE +0'-0".

LEGEND

- PROPERTY LINE
- CORE/ SERVICE
- RETAIL
- EVENT
- THEATER
- OFFICE
- PARKING
- TERRACE
- ROOF
- RESIDENTIAL
- LINE OF THEATER ABOVE
- LINE OF OFFICE ABOVE
- DIRECTION OF TRAFFIC FLOW
- VEHICULAR ENTRANCE/ EXIT
- ▶ PEDESTRIAN OFFICE ENTRANCE/ EXIT
- ▶ PEDESTRIAN RETAIL ENTRANCE/ EXIT
- ▶ PEDESTRIAN THEATER ENTRANCE/ EXIT
- ▶ PEDESTRIAN RES ENTRANCE/ EXIT

NOTE:
SOUTH BUILDING FIRST AND SECOND FLOOR LAYOUTS DEPICTED ARE THE CURRENT LAYOUTS OF THE MARKET AT UNION MARKET AND ARE SUBJECT TO CHANGE OVER TIME, INCLUDING THE CREATION OF SEPARATE RETAIL USES WITH INDIVIDUAL ENTRANCES.

1309 - 1329 5TH STREET NE WASHINGTON, DC

PUD APPLICATION 2014 JULY 3
SUPPLEMENTAL SUBMISSION 08/27/14

OPTION 2
FLOOR PLANS A10