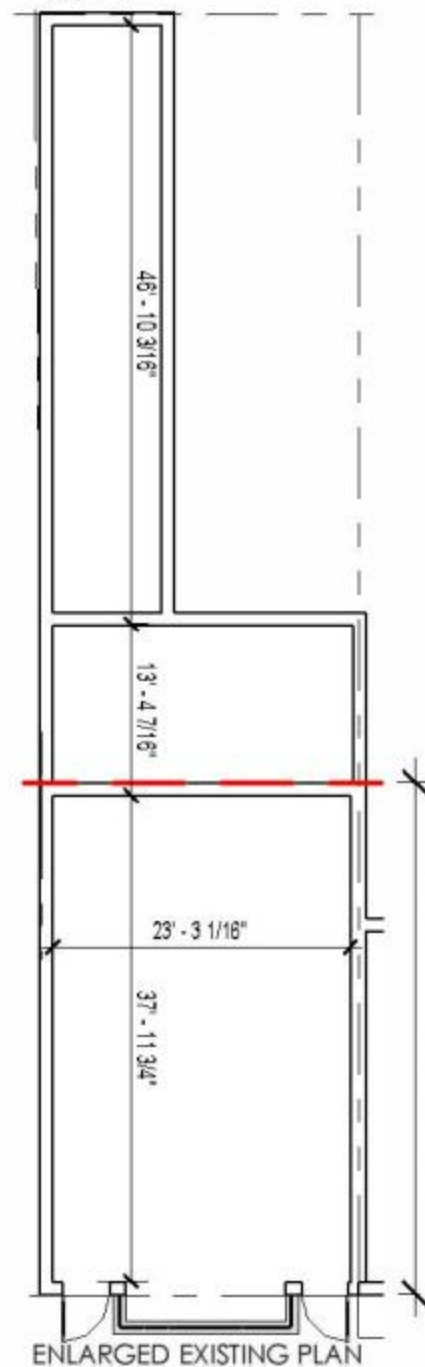


SQUARE 369, LOT 878  
HISTORIC LOT:  
LOT 1



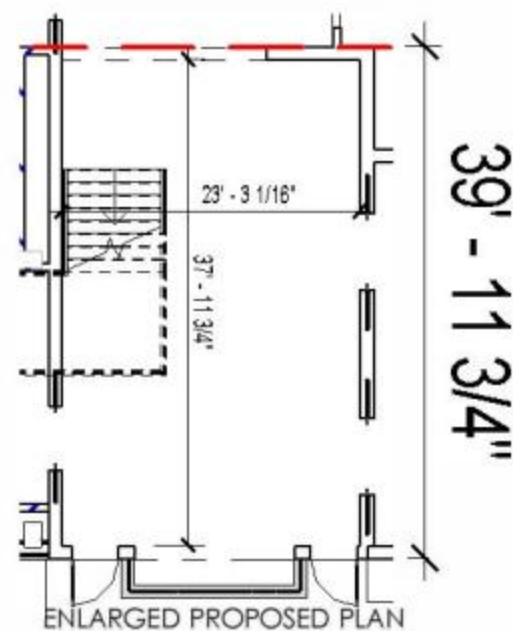
ENLARGED EXISTING PLAN



SITE PLAN



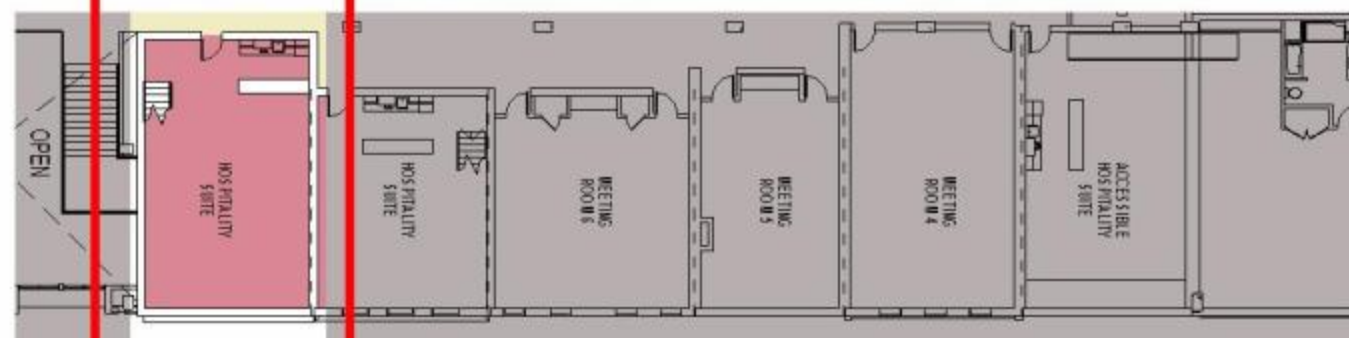
THIRD LEVEL PLAN



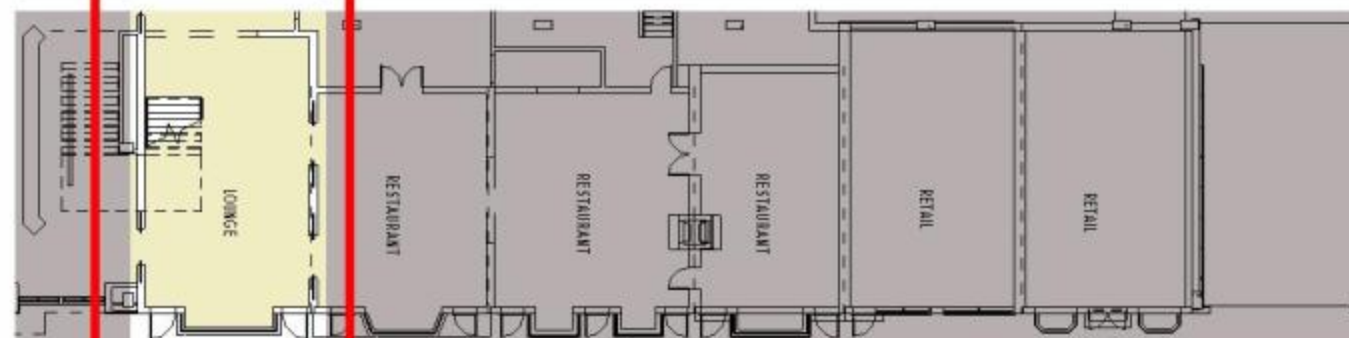
ENLARGED PROPOSED PLAN



EXISTING AERIAL



SECOND LEVEL PLAN



GROUND LEVEL PLAN



PROPOSED ELEVATION

PROJECT N° 20110015 / 03862-001

ISSUE DATE: NOVEMBER 20, 2014

MAYOR'S AGENT  
HEARING PRESENTATION  
DECEMBER 12, 2014

LOT 878 BUILDING INFORMATION

COLUMBIA PLACE - BLOCK 369  
Square 369, Washington, DC

© 2014 Cooper Carry, Inc., 191 Peachtree Street NE, Suite 2400, Atlanta, Georgia 30303 Tel. 404-237-2000 Fax 404-237-0276

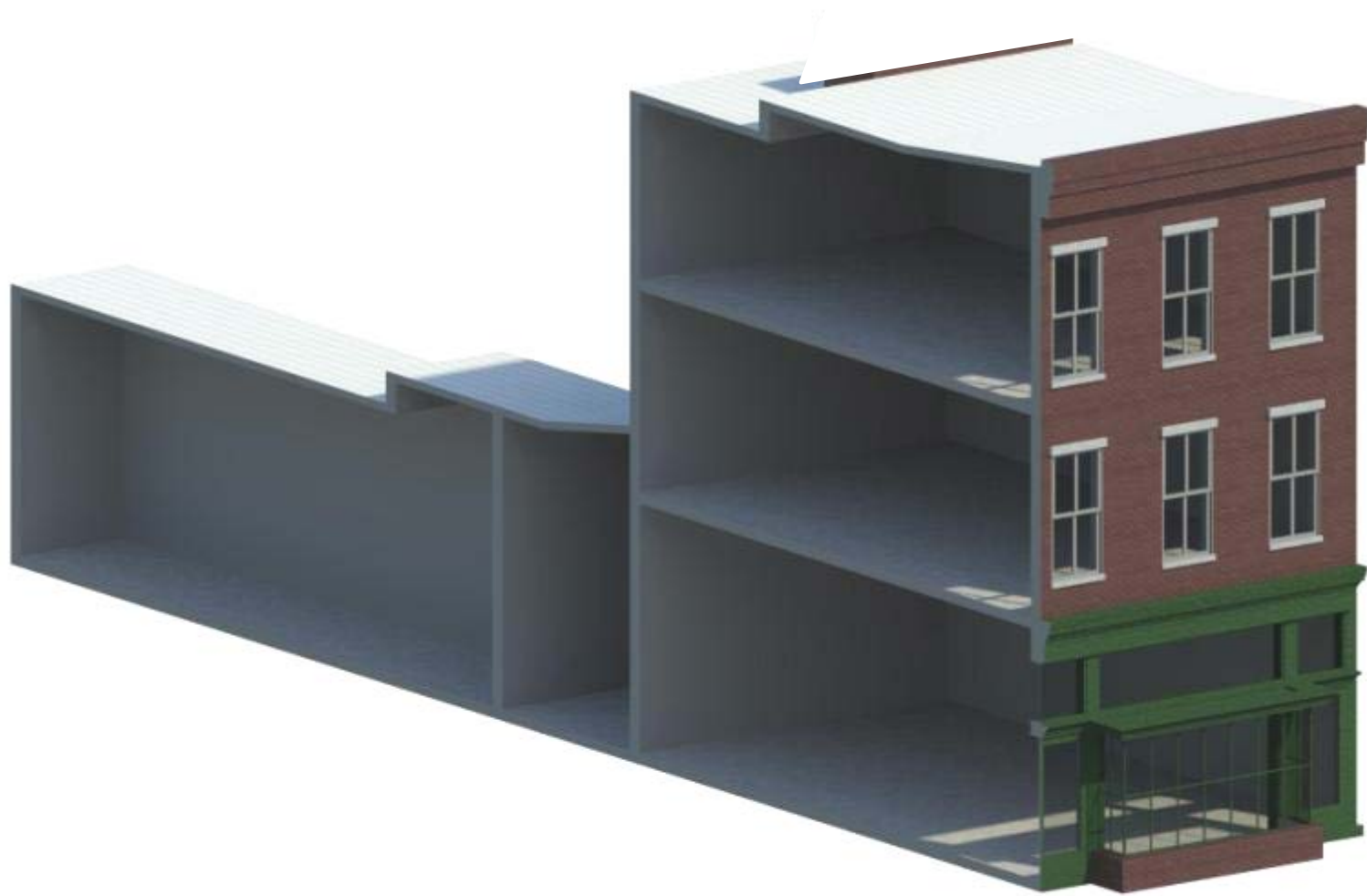


HPRB 369

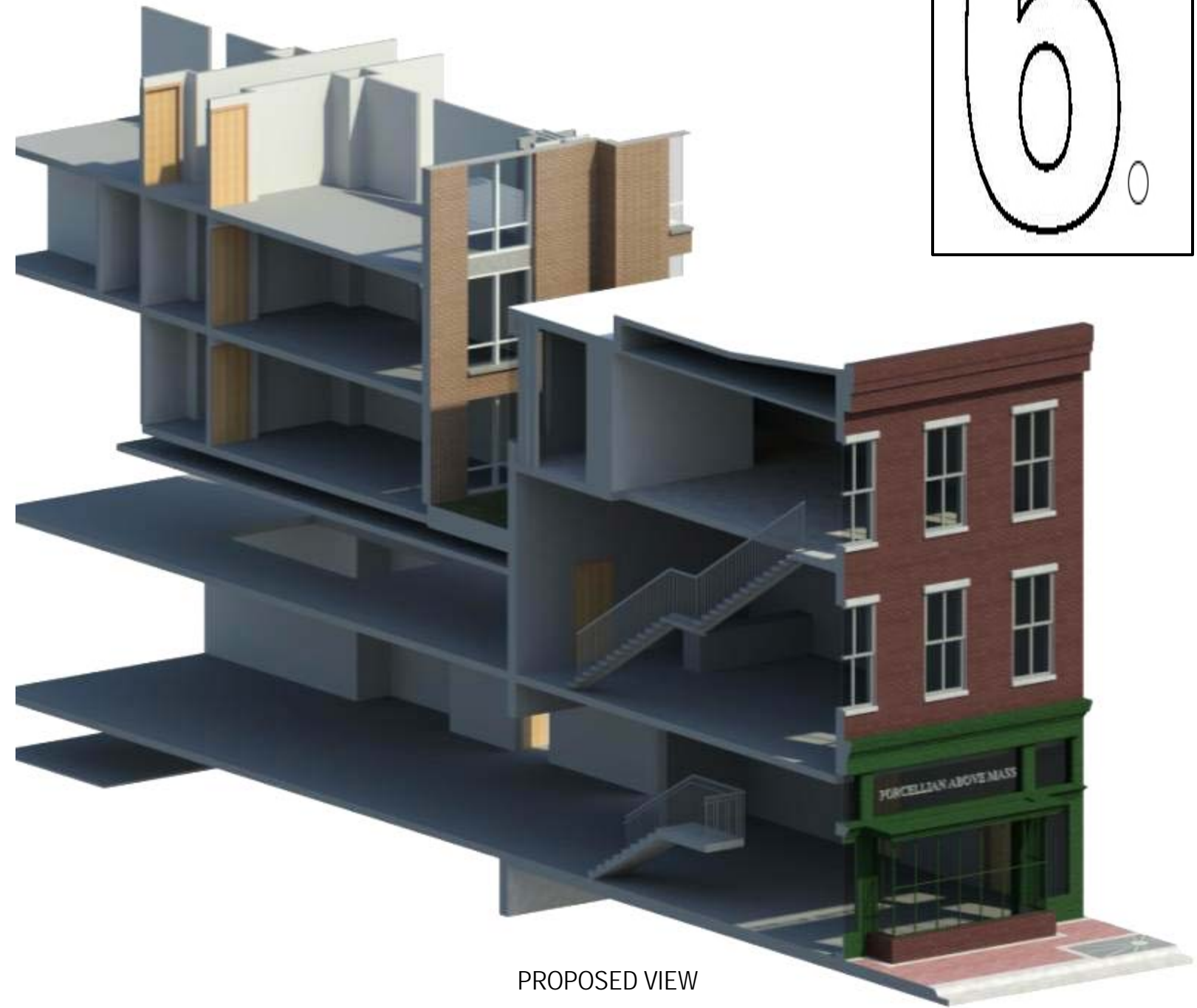
ZONING COMMISSION  
District of Columbia  
CASE NO. 14-09  
EXHIBIT NO. 50A17  
**A110**



6.



EXISTING VIEW



PROPOSED VIEW

Information presented at Mayor's Agent Hearing and submitted with PUD as Supplemental Information

PROJECT N° 20110015 / 03862-001

ISSUE DATE: NOVEMBER 20, 2014

**MAYOR'S AGENT  
HEARING PRESENTATION  
DECEMBER 12, 2014**

© 2014 Cooper Carry, Inc., 191 Peachtree Street NE, Suite 2400, Atlanta, Georgia 30303 Tel. 404-237-2000 Fax 404-237-0276

LOT 878 BUILDING VIEWS

COLUMBIA PLACE - BLOCK 369  
*Square 369, Washington, DC*

  
**COOPER CARRY**  
tvsvdesign

HPRB 369  
A-110a



6

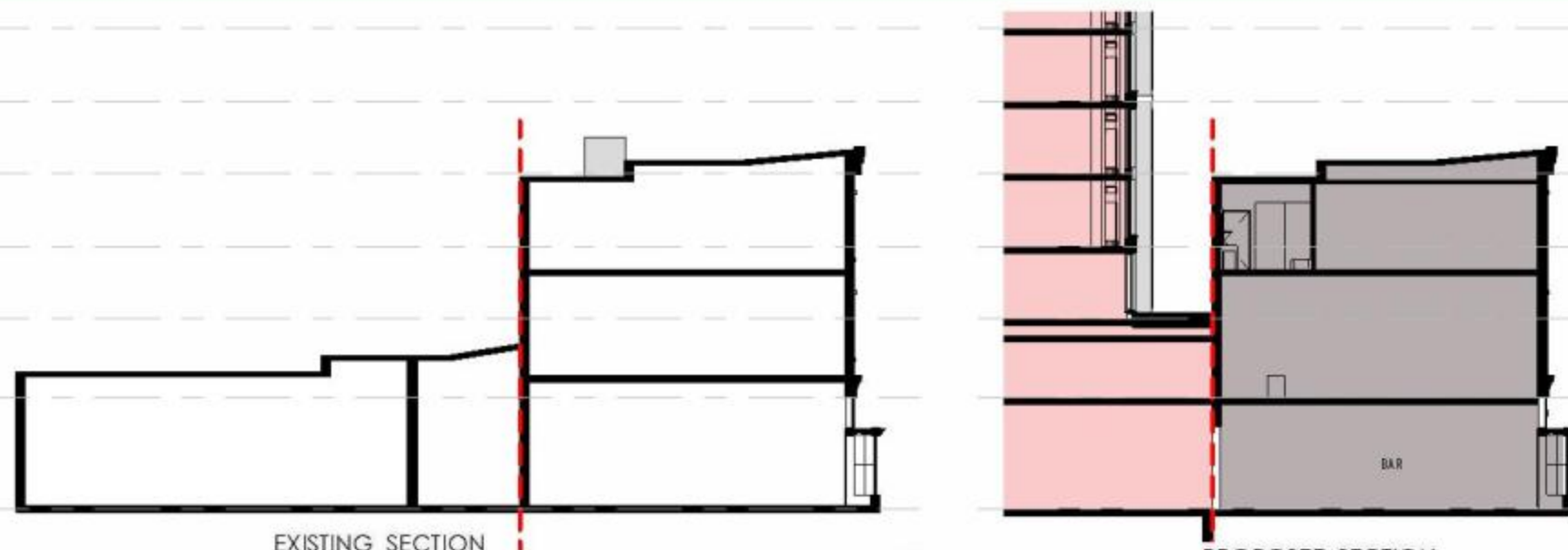
**1104**9<sup>TH</sup> STREET NWSQUARE 369, LOT 878  
HISTORIC LOT:  
LOT 1**BUILDING DATA:**

YEAR BUILT CIRCA 1850-1855

ARCHITECT UNKNOWN

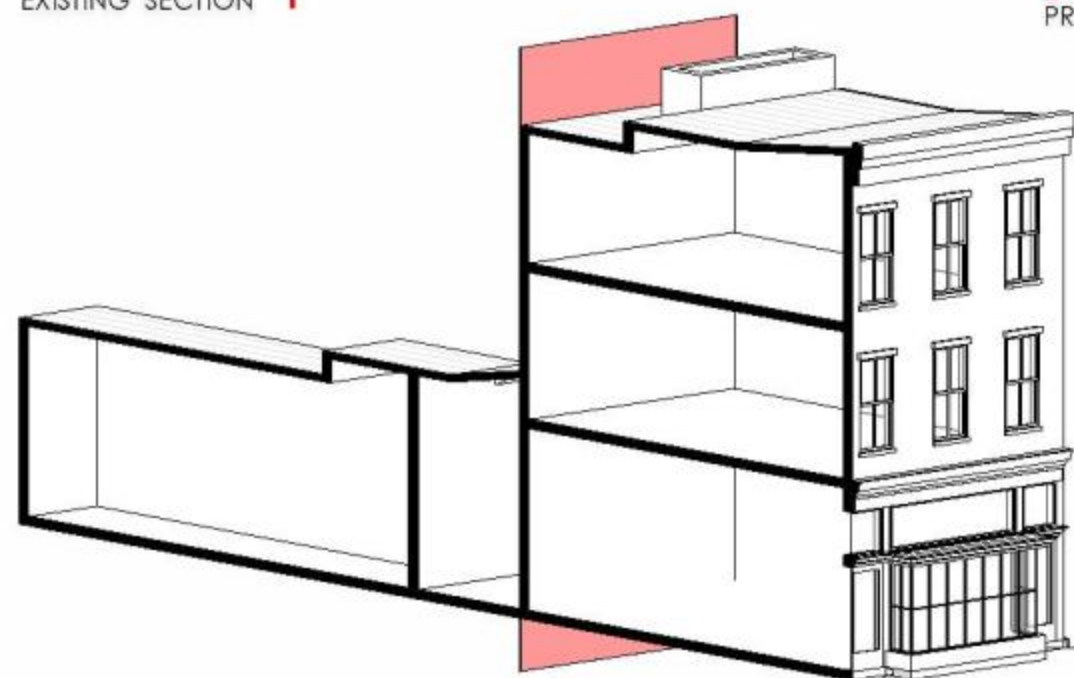
ORIGINAL USE DWELLING

SUBSEQUENT USES STORE AND DWELLING



EXISTING SECTION

PROPOSED SECTION



AXONOMETRIC VIEW – EXISTING BUILDING

**EXISTING CONDITIONS:**

FRONT FACADE



REAR FACADE



SIDE VIEW



REAR VIEW

**VISUAL ANALYSIS OF STRUCTURE:**

- Front façade to be preserved and braced during construction.
- Concrete slab on grade to remain where determined to be sound.
- Masonry walls to remain as indicated. Walls to be reinforced as required.
- 2<sup>nd</sup> and 3<sup>rd</sup> floors are in poor condition.
- Roof is in poor condition.
- Intermediate wood floors to be removed and replaced with code-compliant materials. Floors to be located as dictated by hotel program.
- Roof structure to be removed and replaced with code-compliant materials. New materials and configuration to match existing as closely as possible.

PROJECT N° 20110015 / 03862-001

ISSUE DATE: NOVEMBER 20, 2014

MAYOR'S AGENT  
HEARING PRESENTATION  
DECEMBER 12, 2014

LOT 878 BUILDING INFORMATION

COLUMBIA PLACE - BLOCK 369  
*Square 369, Washington, DC*

© 2014 Cooper Carry, Inc., 191 Peachtree Street NE, Suite 2400, Atlanta, Georgia 30303 Tel. 404-237-2000 Fax 404-237-0276

**COOPER CARRY**

tvsvdesign

HPRB 369

A-111



7

911

L STREET NW

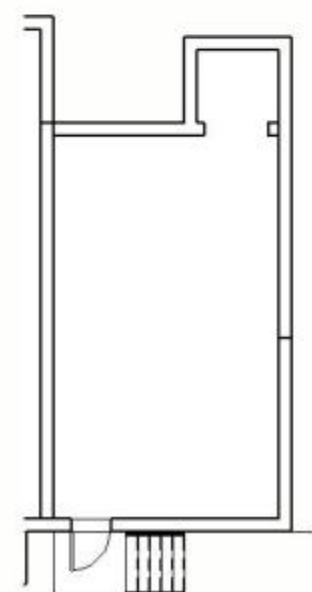
SQUARE 369, LOT 801  
HISTORIC LOT:  
PART OF LOT 2



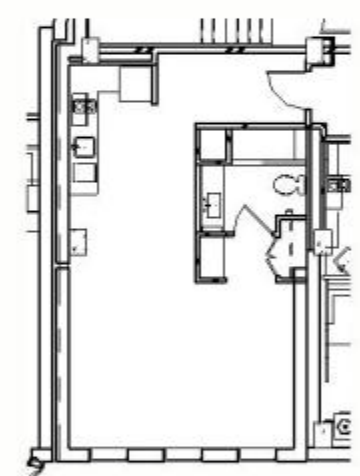
SITE PLAN



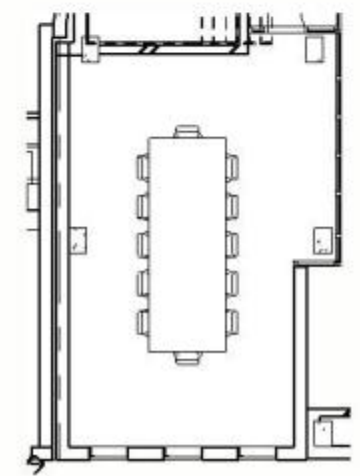
EXISTING AERIAL



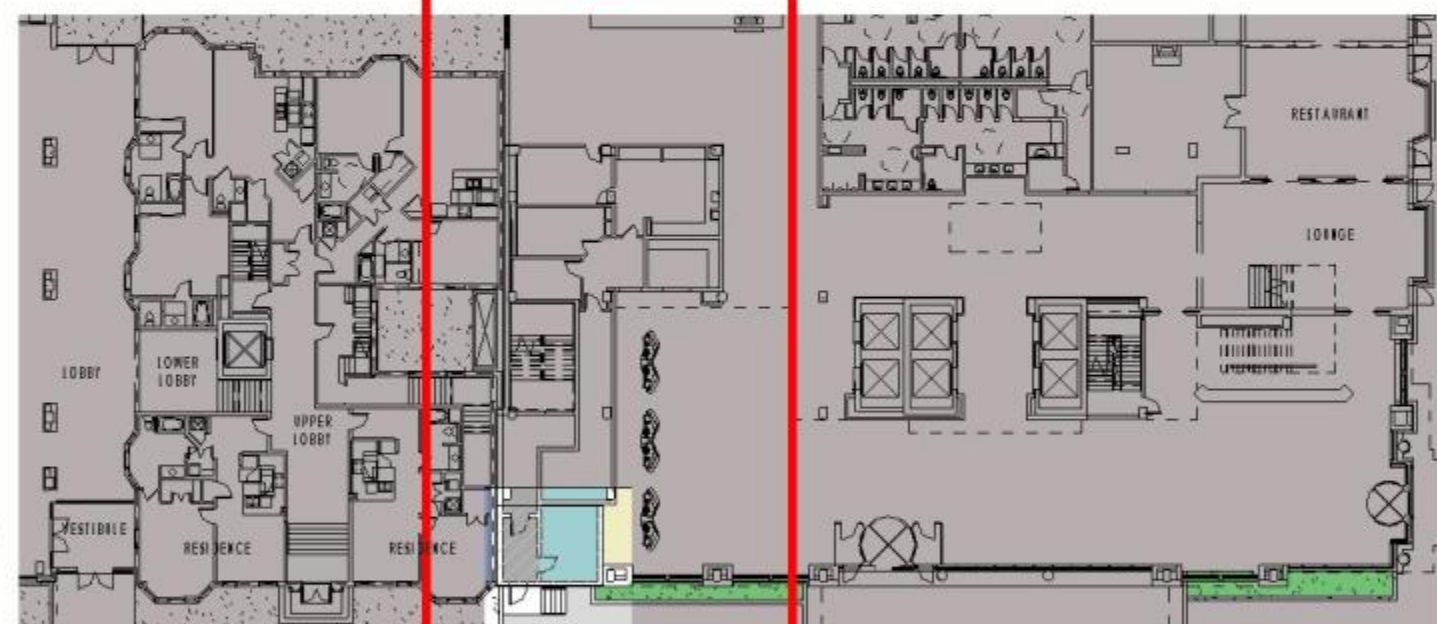
ENLARGED  
EXISTING PLAN



ENLARGED  
PROPOSED PLAN  
(THIRD FLOOR)



ENLARGED  
PROPOSED PLAN  
(SECOND FLOOR)



GROUND LEVEL PLAN



PROPOSED ELEVATION

PROJECT N° 20110015 / 03862-001      ISSUE DATE: NOVEMBER 20, 2014

MAYOR'S AGENT  
HEARING PRESENTATION  
DECEMBER 12, 2014

LOT 801 BUILDING INFORMATION

COLUMBIA PLACE - BLOCK 369  
Square 369, Washington, DC

© 2014 Cooper Carry, Inc., 191 Peachtree Street NE, Suite 2400, Atlanta, Georgia 30303 Tel. 404-237-2000 Fax 404-237-0276



HPRB 369  
A-113

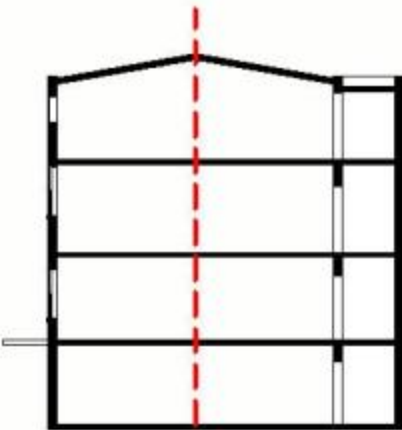


911  
L STREET NW

SQUARE 369, LOT 801  
HISTORIC LOT:  
PART OF LOT 2

BUILDING DATA:

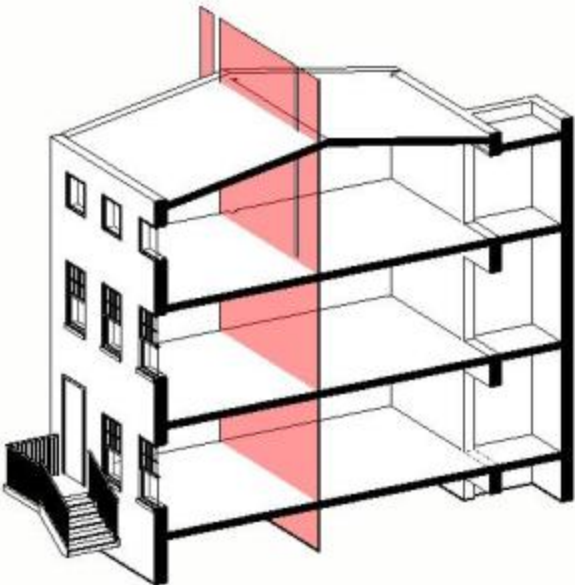
YEAR BUILT	CIRCA 1854-1859
ARCHITECT	UNKNOWN
ORIGINAL USE	DWELLING
SUBSEQUENT USES	DWELLING



EXISTING SECTION



PROPOSED SECTION



AXONOMETRIC VIEW - EXISTING BUILDING

EXISTING CONDITIONS:



FRONT FACADE



REAR FACADE



SIDE VIEW



AERIAL VIEW

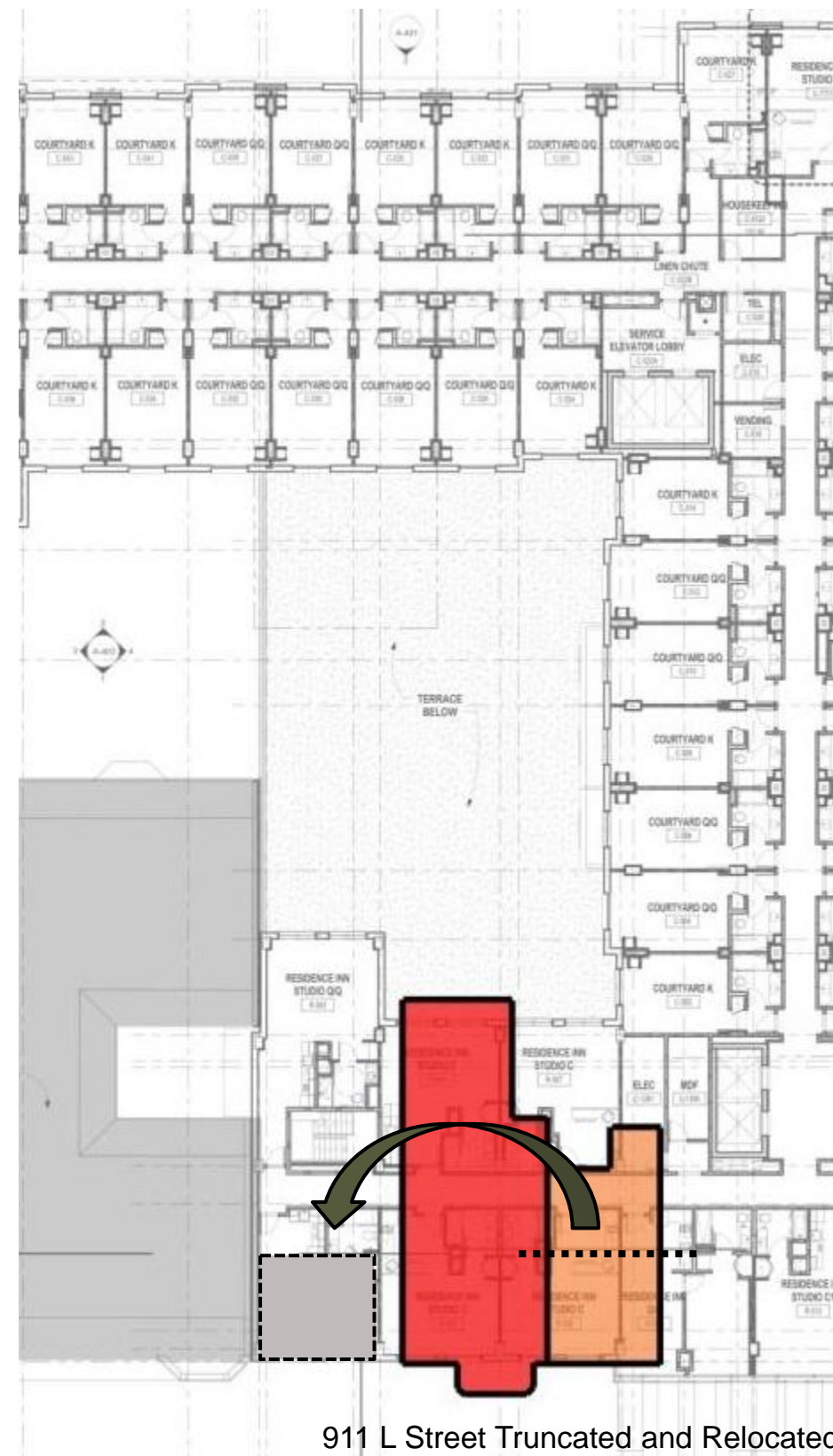
VISUAL ANALYSIS OF STRUCTURE:

- Front facade to be preserved and braced for relocation and during construction.
- Masonry walls to remain as indicated. Walls to be reinforced as required.
- Floors to be located as dictated by hotel program.
- Roof structure to be removed and replaced with code-compliant materials. New materials and configuration to match existing as closely as possible.

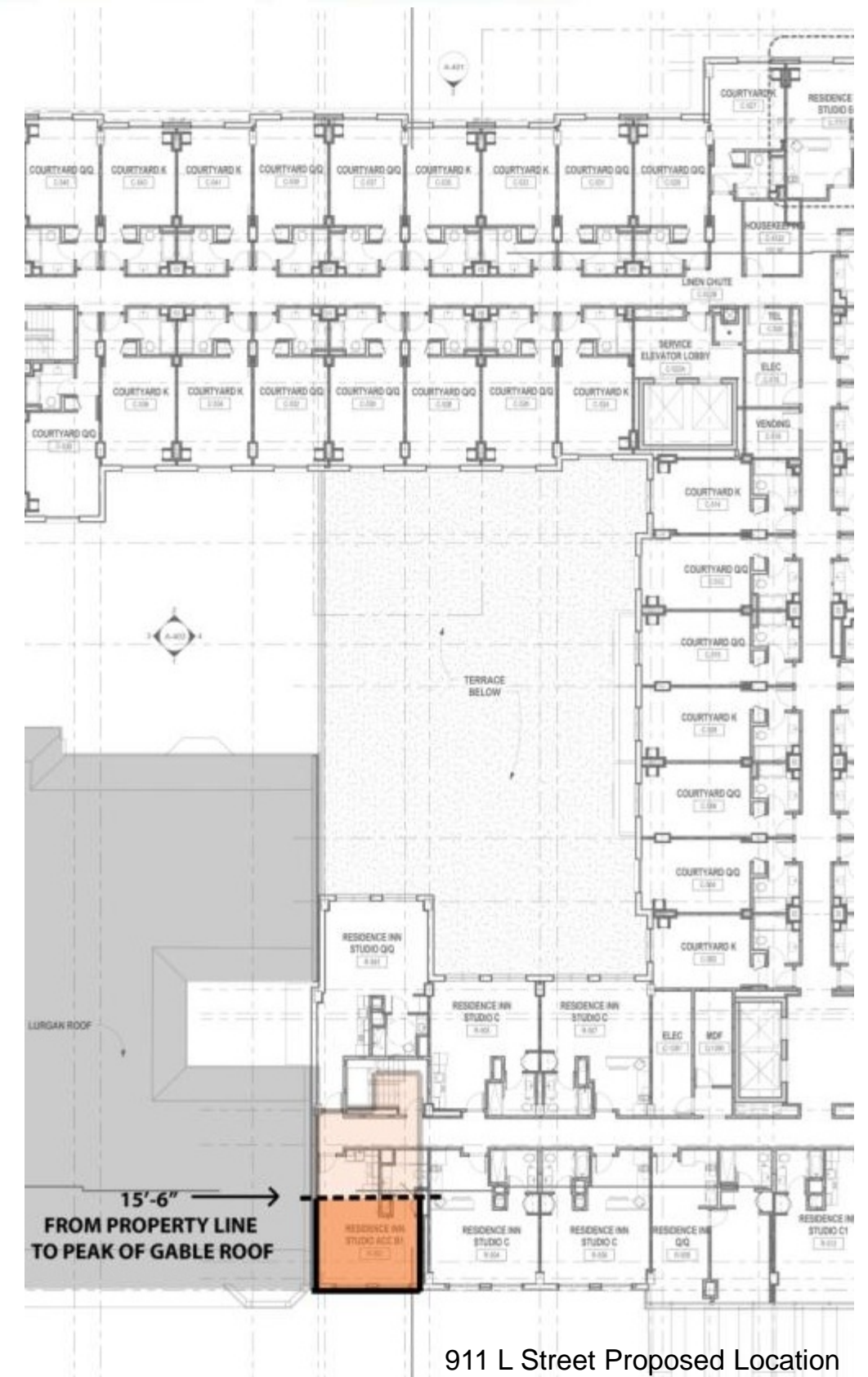




911/913 L Street Current Location



911 L Street Truncated and Relocated



911 L Street Proposed Location

PROJECT N° 20110015 / 03862-001

ISSUE DATE: NOVEMBER 20, 2014

**MAYOR'S AGENT  
HEARING PRESENTATION  
DECEMBER 12, 2014**

© 2014 Cooper Carry, Inc., 191 Peachtree Street NE, Suite 2400, Atlanta, Georgia 30303 Tel. 404-237-2000 Fax 404-237-0276

911 L Street Proposed Location

COLUMBIA PLACE - BLOCK 369  
Square 369, Washington, DC

**COOPER CARRY**  
tvdsdesign

HPRB 369

A-113a



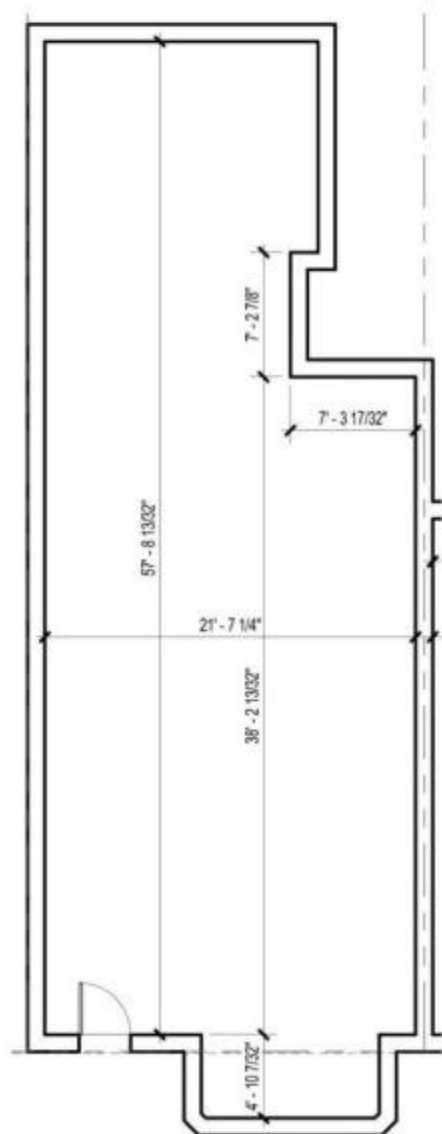
8

**913**

L STREET NW

SQUARE 369, LOT 802  
HISTORIC LOT:  
PART OF LOT 2

SITE PLAN



ENLARGED EXISTING PLAN

BUILDING TO BE  
DEMOLISHED

ENLARGED PROPOSED PLAN

**BUILDING DATA:**

YEAR BUILT	1892
ARCHITECT	APPLETON P. CLARK, JR.
ORIGINAL USE	DWELLING
SUBSEQUENT USES	DWELLING

**EXISTING CONDITIONS:**

FRONT FACADE



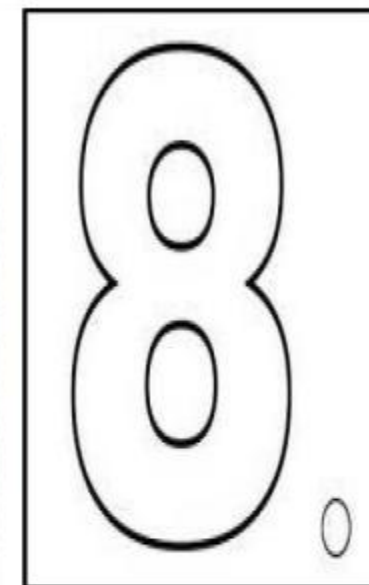
REAR FACADE



SIDE VIEW



AERIAL VIEW

**VISUAL ANALYSIS OF STRUCTURE :**

To be demolished.

PROJECT N° 20110015 / 03862-001

ISSUE DATE: NOVEMBER 20, 2014

MAYOR'S AGENT  
HEARING PRESENTATION  
DECEMBER 12, 2014

LOT 802 BUILDING INFORMATION

COLUMBIA PLACE - BLOCK 369  
Square 369, Washington, DC

© 2014 Cooper Carry, Inc., 191 Peachtree Street NE, Suite 2400, Atlanta, Georgia 30303 Tel. 404-237-2000 Fax 404-237-0276

COOPER CARRY  
tvsvdesign

HPRB 369

A-114

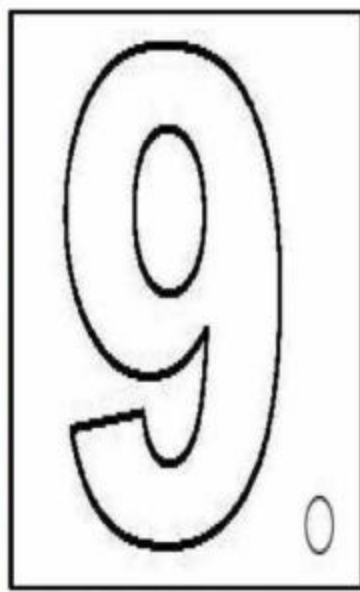


919  
L STREET NW

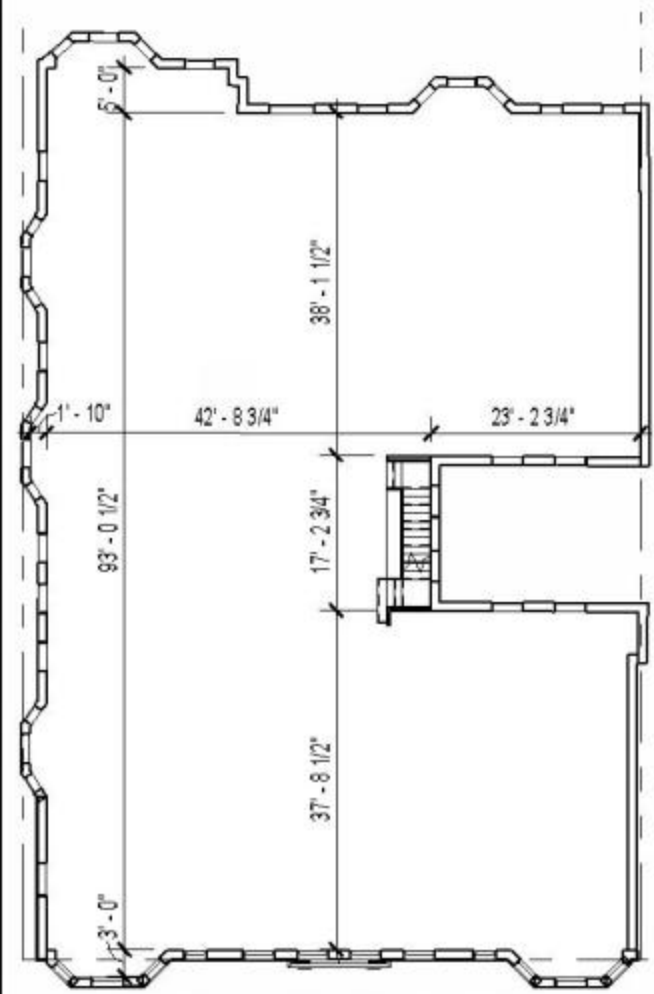
SQUARE 369, LOT 881  
HISTORIC LOT:  
LOT 62; LOT H, I, K



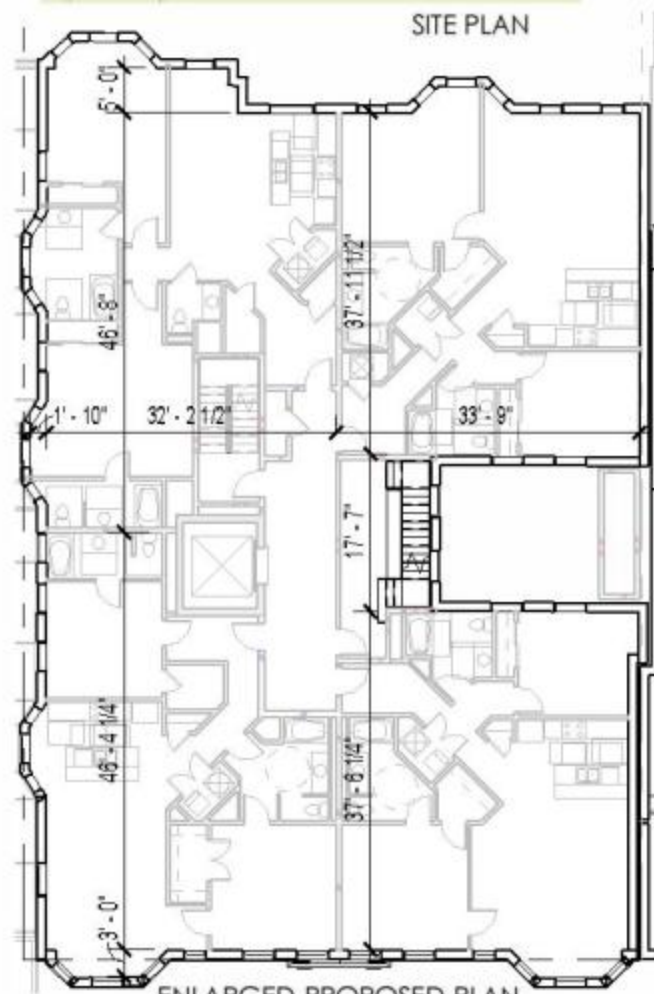
SITE PLAN



EXISTING AERIAL



ENLARGED EXISTING PLAN



ENLARGED PROPOSED PLAN  
(TYPICAL FLOOR)



GROUND LEVEL PLAN



PROPOSED ELEVATION

PROJECT N° 20110015 / 03862-001    ISSUE DATE: NOVEMBER 20, 2014

MAYOR'S AGENT  
HEARING PRESENTATION  
DECEMBER 12, 2014

LOT 881 BUILDING INFORMATION

COLUMBIA PLACE - BLOCK 369  
Square 369, Washington, DC

© 2014 Cooper Carry, Inc., 191 Peachtree Street NE, Suite 2400, Atlanta, Georgia 30303 Tel. 404-237-2000 Fax 404-237-0276

 HPRB 369

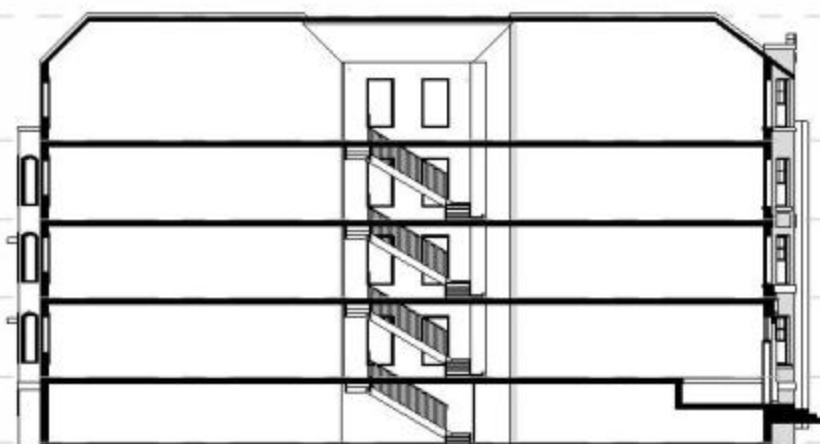
**COOPER CARRY**  
tvdsdesign

A-115

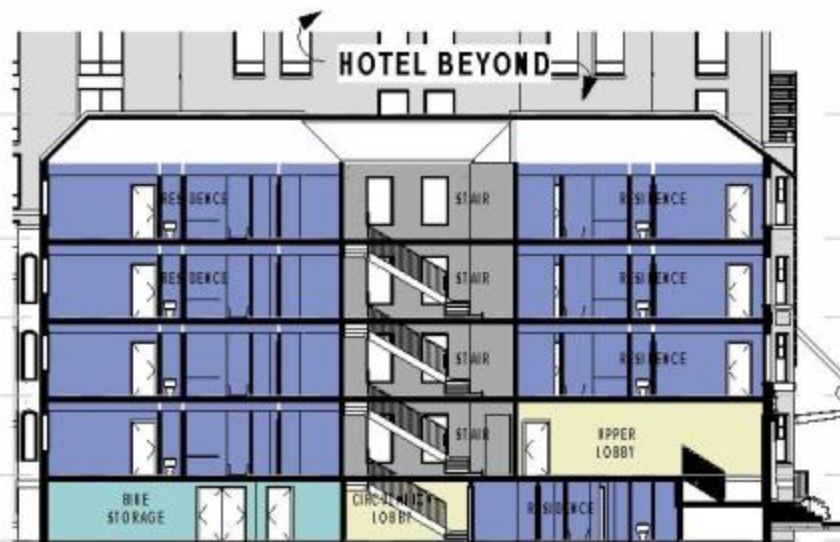


**BUILDING DATA:**

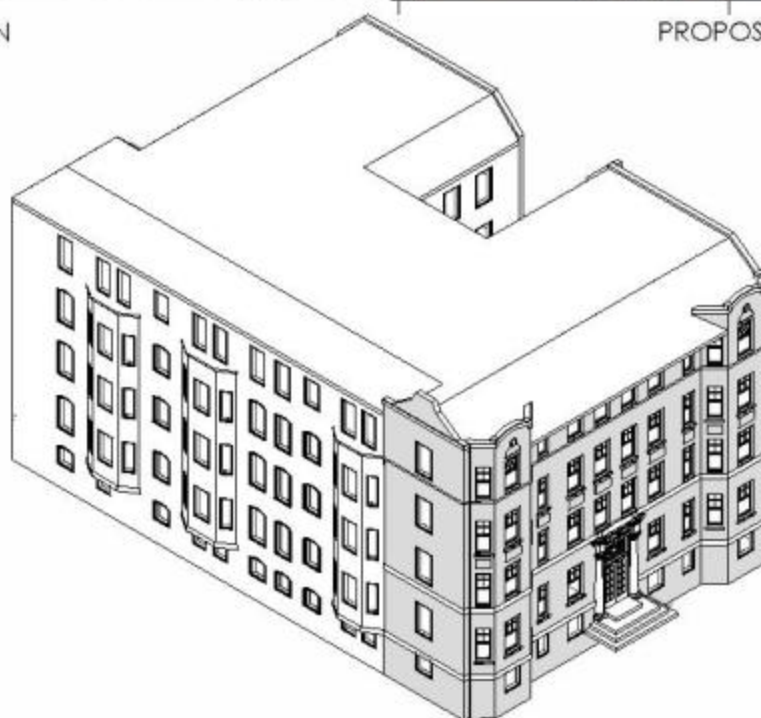
YEAR BUILT	1913
ARCHITECT	APPLETON P. CLARK, JR.
ORIGINAL USE	APARTMENT BUILDING
SUBSEQUENT USES	APARTMENT BUILDING



EXISTING SECTION



PROPOSED SECTION



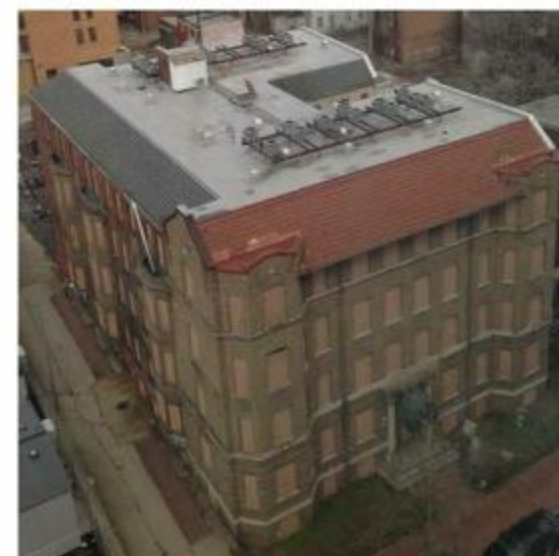
AXONOMETRIC VIEW – EXISTING BUILDING

**EXISTING CONDITIONS:**

FRONT FACADE



REAR FACADE



SIDE VIEW



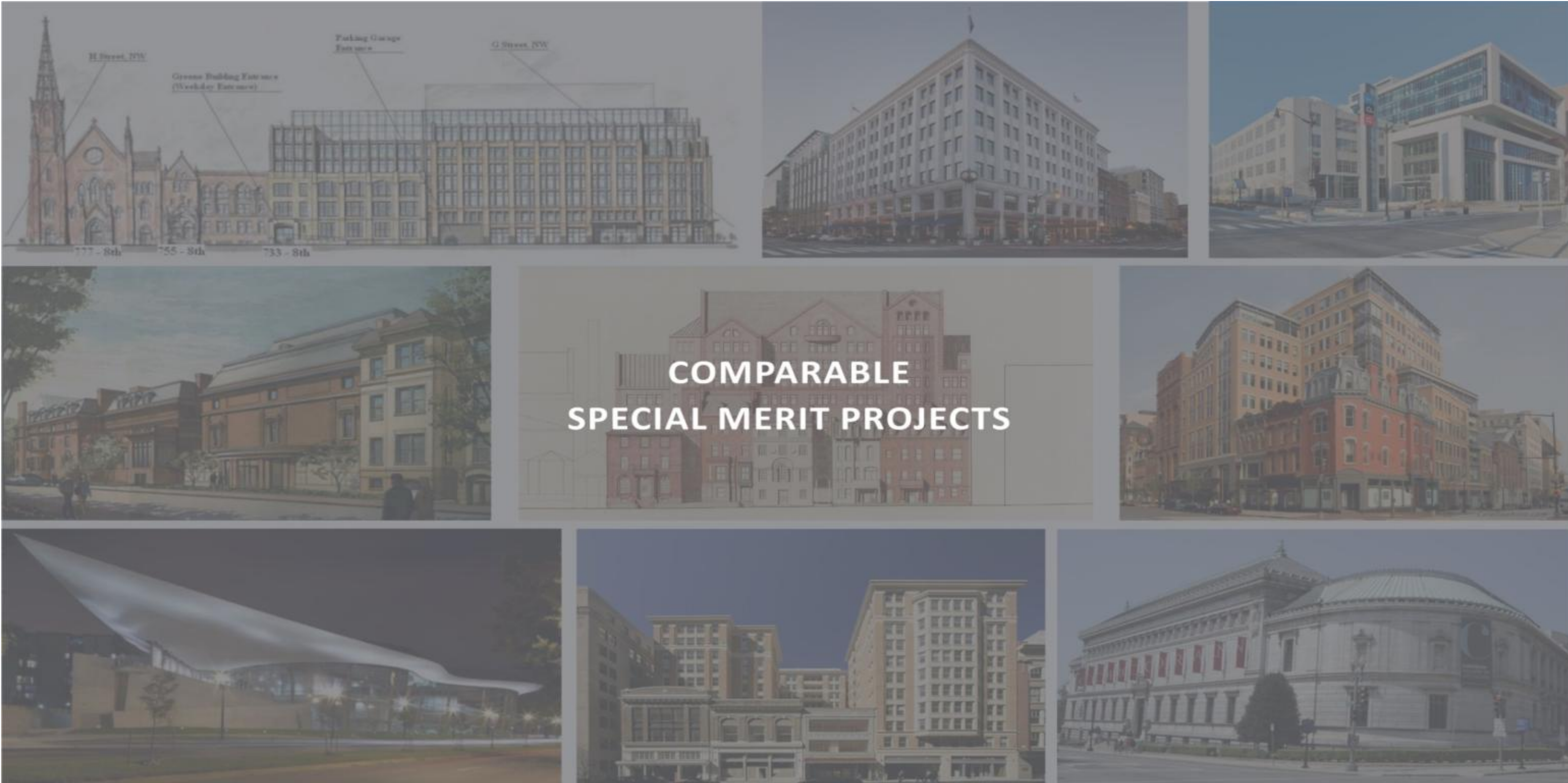
SIDE VIEW

**VISUAL ANALYSIS OF STRUCTURE:**

- All facades to be preserved and braced during construction.
- Concrete slab on grade to remain where determined to be sound.
- Masonry walls to remain as indicated. Walls to be reinforced as required.
- Retain existing floors and roof structure, and encapsulate them to achieve code compliance.
- Final code compliant remediation of existing floors and roof structure to be determined with input from HPRB following selective demolition of existing finishes.







COMPARABLE  
SPECIAL MERIT PROJECTS

Information presented at Mayor's Agent Hearing and submitted with PUD as Supplemental Information

PROJECT N° 20110015 / 03862-001		ISSUE DATE: NOVEMBER 20, 2014	
MAYOR'S AGENT HEARING PRESENTATION DECEMBER 12, 2014		COLUMBIA PLACE - BLOCK 369 <i>Square 369, Washington, DC</i>	
		© 2014 Cooper Carry, Inc., 191 Peachtree Street NE, Suite 2400, Atlanta, Georgia 30303 Tel. 404-237-2000 Fax 404-237-0276	
		 COOPER CARRY	HPRB 369
		tvsvdesign	A-120





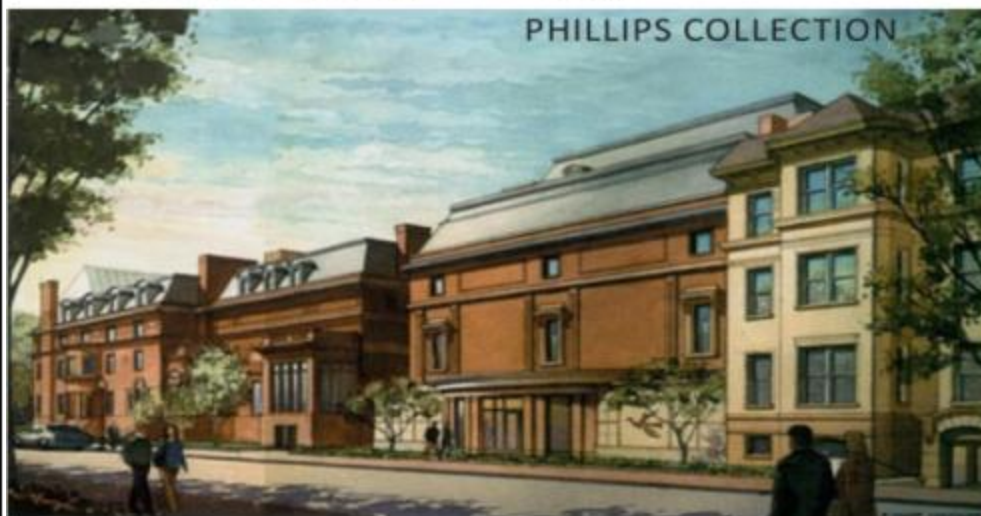
CALVARY BAPTIST CHURCH



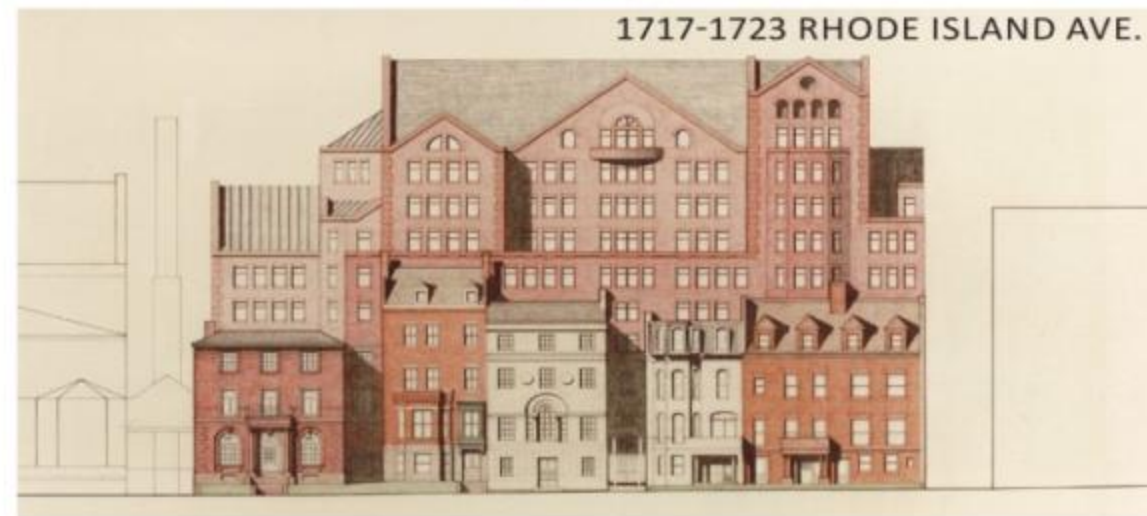
TERRELL PLACE



C&P TELEPHONE CO.



PHILLIPS COLLECTION



1717-1723 RHODE ISLAND AVE.



ATLANTIC BUILDING



ARENA STAGE



915-919 E STREET, NW



CORCORAN GALLERY

Information presented at Mayor's Agent Hearing and submitted with PUD as Supplemental Information

PROJECT N° 20110015 / 03862-001

ISSUE DATE: NOVEMBER 20, 2014

**MAYOR'S AGENT  
HEARING PRESENTATION  
DECEMBER 12, 2014**

© 2014 Cooper Carry, Inc., 191 Peachtree Street NE, Suite 2400, Atlanta, Georgia 30303 Tel. 404-237-2000 Fax 404-237-0276

COLUMBIA PLACE - BLOCK 369  
*Square 369, Washington, DC*

  
**COOPER CARRY**  
tvdesign

HPRB 369  
**A-121**





Information presented at Mayor's Agent Hearing and submitted with PUD as Supplemental Information

PROJECT N° 20110015 / 03862-001

ISSUE DATE: NOVEMBER 20, 2014

**MAYOR'S AGENT  
HEARING PRESENTATION  
DECEMBER 12, 2014**

© 2014 Cooper Carry, Inc., 191 Peachtree Street NE, Suite 2400, Atlanta, Georgia 30303 Tel. 404-237-2000 Fax 404-237-0276

RENDERING-STREET VIEW-9TH

COLUMBIA PLACE - BLOCK 369  
*Square 369, Washington, DC*

  
**COOPER CARRY**  
tvdesign

HPRB 369

A-513





Information presented at Mayor's Agent Hearing and submitted with PUD as Supplemental Information

PROJECT N° 20110015 / 03862-001

ISSUE DATE: NOVEMBER 20, 2014

MAYOR'S AGENT  
HEARING PRESENTATION  
DECEMBER 12, 2014

RENDERING-STREET VIEW-ENTRY

COLUMBIA PLACE - BLOCK 369  
*Square 369, Washington, DC*

© 2014 Cooper Carry, Inc., 191 Peachtree Street NE, Suite 2400, Atlanta, Georgia 30303 Tel. 404-237-2000 Fax 404-237-0276



HPRB 369

A-514





Information presented at Mayor's Agent Hearing and submitted with POD as Supplemental Information

PROJECT N° 20110015 / 03862-001

ISSUE DATE: NOVEMBER 20, 2014

**MAYOR'S AGENT  
HEARING PRESENTATION  
DECEMBER 12, 2014**

RENDERING – 9TH STREET VIEW

COLUMBIA PLACE - BLOCK 369  
*Square 369, Washington, DC*

© 2014 Cooper Carry, Inc., 191 Peachtree Street NE, Suite 2400, Atlanta, Georgia 30303 Tel. 404-237-2000 Fax 404-237-0276



**COOPER CARRY**

**tvdesign**

HPRB 369

**A-515**





PROJECT N° 20110015 / 03862-001

ISSUE DATE: NOVEMBER 10, 2014

**MAYOR'S AGENT  
REVIEW SUBMISSION  
NOVEMBER 20, 2014**

911, 913 L Street: Current Location

COLUMBIA PLACE - BLOCK 369  
Square 369, Washington, DC

© 2014 Cooper Carry, Inc., 191 Peachtree Street NE, Suite 2400, Atlanta, Georgia 30303 Tel. 404-237-2000 Fax 404-237-0276



**COOPER CARRY**  
tvdsdesign

HPRB 369

A-602





Information presented at Mayor's Agent Hearing and submitted with PUD as Supplemental Information

PROJECT N° 20110015 / 03862-001

ISSUE DATE: NOVEMBER 20, 2014

**MAYOR'S AGENT  
HEARING PRESENTATION  
DECEMBER 12, 2014**

© 2014 Cooper Carry, Inc., 191 Peachtree Street NE, Suite 2400, Atlanta, Georgia 30303 Tel. 404-237-2000 Fax 404-237-0276

 Current Scope of Historic Preservation

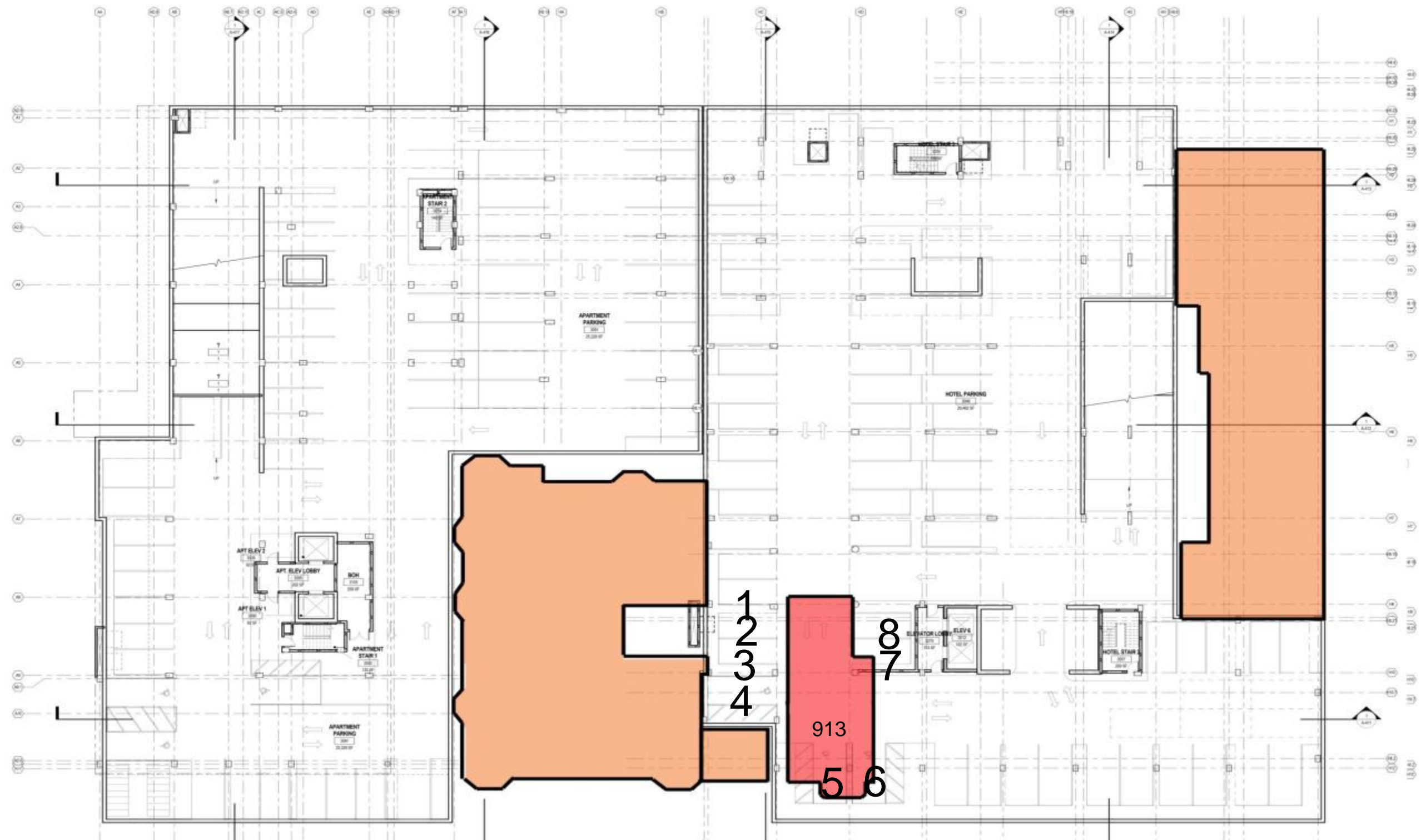
COLUMBIA PLACE - BLOCK 369  
Square 369, Washington, DC

  
**COOPER CARRY**  
tvdsdesign

HPRB 369

A-603





Loss of 8 Parking Spaces per floor 2 floors = Total 16 spaces lost

Information presented at Mayor's Agent Hearing and submitted with PUD as Supplemental Information

PROJECT N° 20110015 / 03862-001

ISSUE DATE: NOVEMBER 20, 2014

Programmatic impact of retaining 913 L Street: Parking

MAYOR'S AGENT  
HEARING PRESENTATION  
DECEMBER 12, 2014

COLUMBIA PLACE - BLOCK 369  
Square 369, Washington, DC

© 2014 Cooper Carry, Inc., 191 Peachtree Street NE, Suite 2400, Atlanta, Georgia 30303 Tel. 404-237-2000 Fax 404-237-0276



COOPER CARRY  
tvsvdesign

HPRB 369

A-604





Floor-to-floor heights do not correspond to hotel system.



Loss of Registration and Administration Spaces

Information presented at Mayor's Agent Hearing and submitted with PUD as Supplemental Information

PROJECT N° 20110015 / 03862-001

ISSUE DATE: NOVEMBER 20, 2014

Programmatic impact of retaining 913 L Street: Lobby level does not align

MAYOR'S AGENT  
HEARING PRESENTATION  
DECEMBER 12, 2014

COLUMBIA PLACE - BLOCK 369  
Square 369, Washington, DC

© 2014 Cooper Carry, Inc., 191 Peachtree Street NE, Suite 2400, Atlanta, Georgia 30303 Tel. 404-237-2000 Fax 404-237-0276



COOPER CARRY  
tvdesign

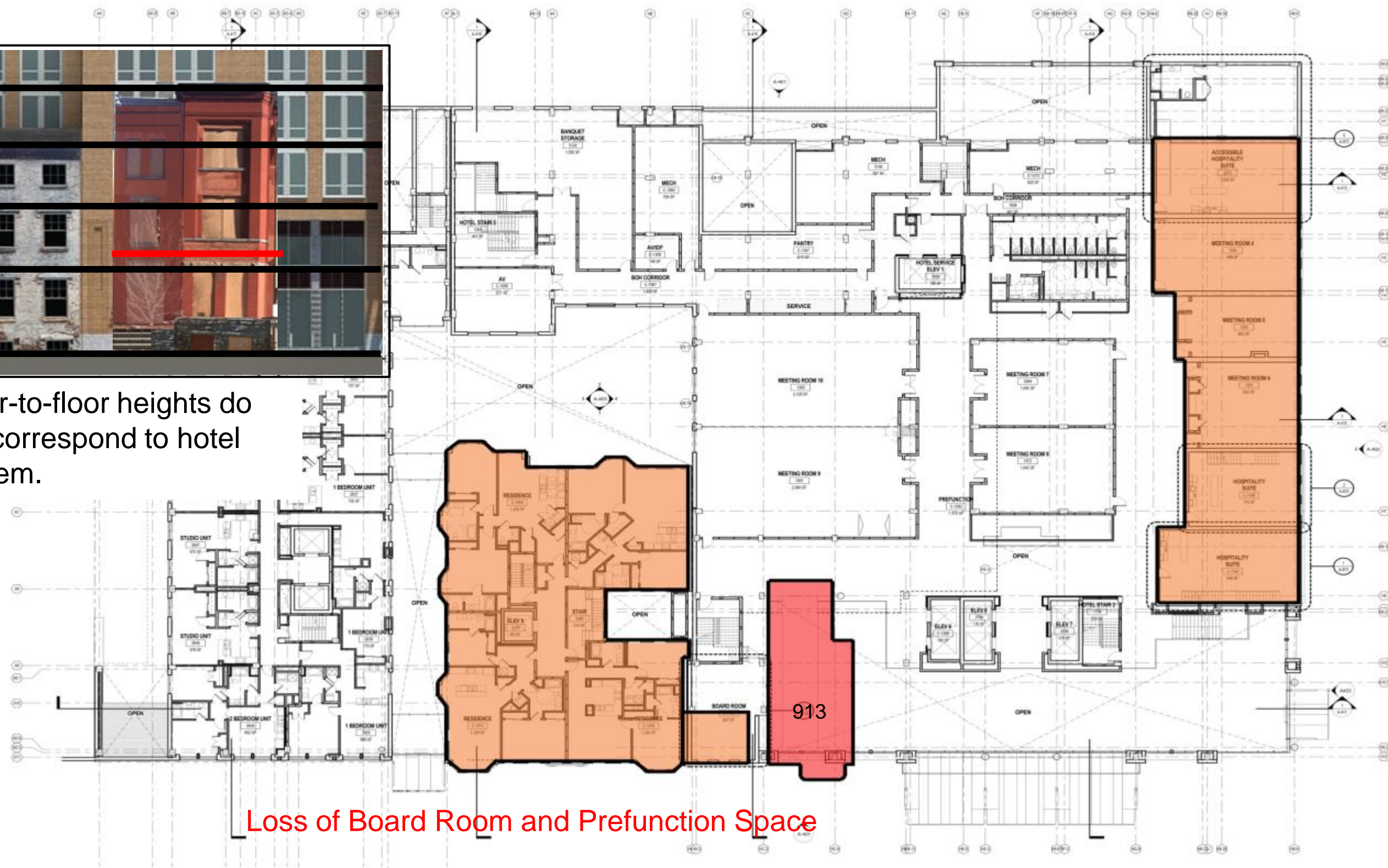
HPRB 369

A-605





Floor-to-floor heights do not correspond to hotel system.



Loss of Board Room and Prefunction Space

PROJECT N° 20110015 / 03862-001

ISSUE DATE: NOVEMBER 20, 2014

Programmatic impact of retaining 913 L Street: Meeting and Banquet

MAYOR'S AGENT  
HEARING PRESENTATION  
DECEMBER 12, 2014

COLUMBIA PLACE - BLOCK 369  
Square 369, Washington, DC

© 2014 Cooper Carry, Inc., 191 Peachtree Street NE, Suite 2400, Atlanta, Georgia 30303 Tel. 404-237-2000 Fax 404-237-0276



COOPER CARRY  
tvdsdesign

HPRB 369

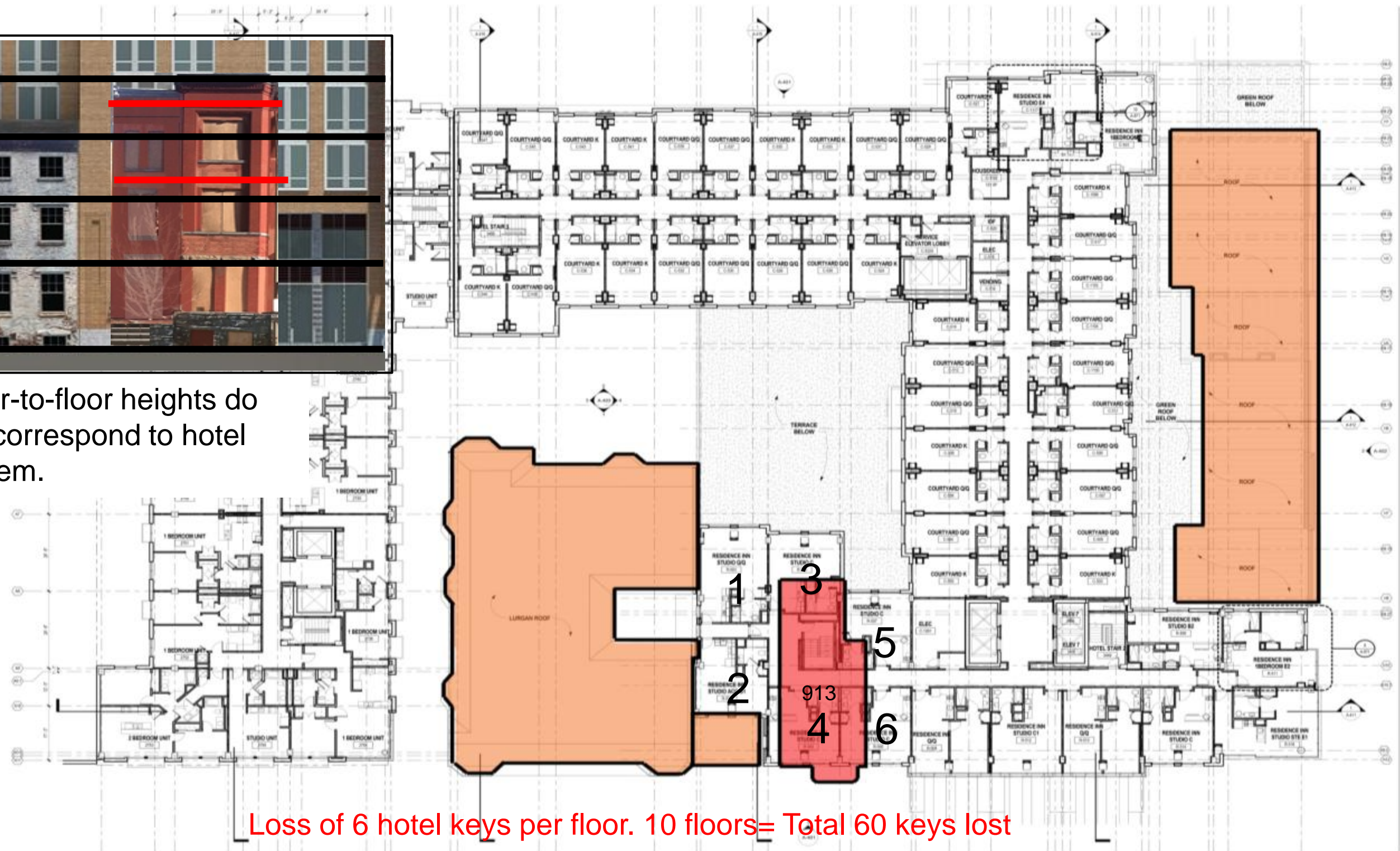
A-606

Additional Information





Floor-to-floor heights do not correspond to hotel system.



Loss of 6 hotel keys per floor. 10 floors= Total 60 keys lost

Information presented at Mayor's Agent hearing and submitted with POD as Supplemental Information

PROJECT N° 20110015 / 03862-001

ISSUE DATE: NOVEMBER 20, 2014

MAYOR'S AGENT  
HEARING PRESENTATION  
DECEMBER 12, 2014

Programmatic impact of retaining 913 L Street: Guestroom Levels

COLUMBIA PLACE - BLOCK 369  
Square 369, Washington, DC

© 2014 Cooper Carry, Inc., 191 Peachtree Street NE, Suite 2400, Atlanta, Georgia 30303 Tel. 404-237-2000 Fax 404-237-0276



COOPER CARRY  
tvsvdesign

HPRB 369

A-606A






Information presented at Mayor's Agent Hearing and submitted with PUD as Supplemental Information

PROJECT N° 20110015 / 03862-001	ISSUE DATE: NOVEMBER 20, 2014	911 L Street relocated, Lurgan restored	 <b>COOPER CARRY</b> tvdesign	HPRB 369  A-607
<b>MAYOR'S AGENT HEARING PRESENTATION DECEMBER 12, 2014</b>	COLUMBIA PLACE - BLOCK 369 <i>Square 369, Washington, DC</i>  <small>© 2014 Cooper Carry, Inc., 191 Peachtree Street NE, Suite 2400, Atlanta, Georgia 30303 Tel. 404-237-2000 Fax 404-237-0276</small>			





Information presented at Mayor's Agent Hearing and submitted with PUD as Supplemental Information

PROJECT N° 20110015 / 03862-001	ISSUE DATE: NOVEMBER 20, 2014	Programmatic loss: 911 L Street relocated, Lurgan Restored; 913 L Street at current Location		 <b>COOPER CARRY</b> tvdesign	HPRB 369
MAYOR'S AGENT HEARING PRESENTATION DECEMBER 12, 2014		COLUMBIA PLACE - BLOCK 369 <i>Square 369, Washington, DC</i>  © 2014 Cooper Carry, Inc., 191 Peachtree Street NE, Suite 2400, Atlanta, Georgia 30303 Tel. 404-237-2000 Fax 404-237-0276			A-608





Information presented at Mayor's Agent Hearing and submitted with POD as Supplemental Information

PROJECT N° 20110015 / 03862-001		ISSUE DATE: NOVEMBER 20, 2014	913 L Street Floor-to-floor heights do not correspond to Hotel system.		<div> HPRB 369</div>	
MAYOR'S AGENT HEARING PRESENTATION DECEMBER 12, 2014			COLUMBIA PLACE - BLOCK 369 <i>Square 369, Washington, DC</i>		COOPER CARRY	
			© 2014 Cooper Carry, Inc., 191 Peachtree Street NE, Suite 2400, Atlanta, Georgia 30303 Tel. 404-237-2000 Fax 404-237-0276		tvdesign	
						A-609





Relocate L street keys to north:  
 Loss of 5 hotel keys per floor. 10 floors= Total 50 keys Plus  
 Courtyard lost

Information presented at Mayor's Agent Hearing and submitted with PUD as Supplemental Information

PROJECT N° 20110015 / 03862-001

ISSUE DATE: NOVEMBER 20, 2014

Programmatic impact of retaining 913 L Street: Guestroom Levels OPTION

MAYOR'S AGENT  
 HEARING PRESENTATION  
 DECEMBER 12, 2014

COLUMBIA PLACE - BLOCK 369  
 Square 369, Washington, DC

© 2014 Cooper Carry, Inc., 191 Peachtree Street NE, Suite 2400, Atlanta, Georgia 30303 Tel. 404-237-2000 Fax 404-237-0276

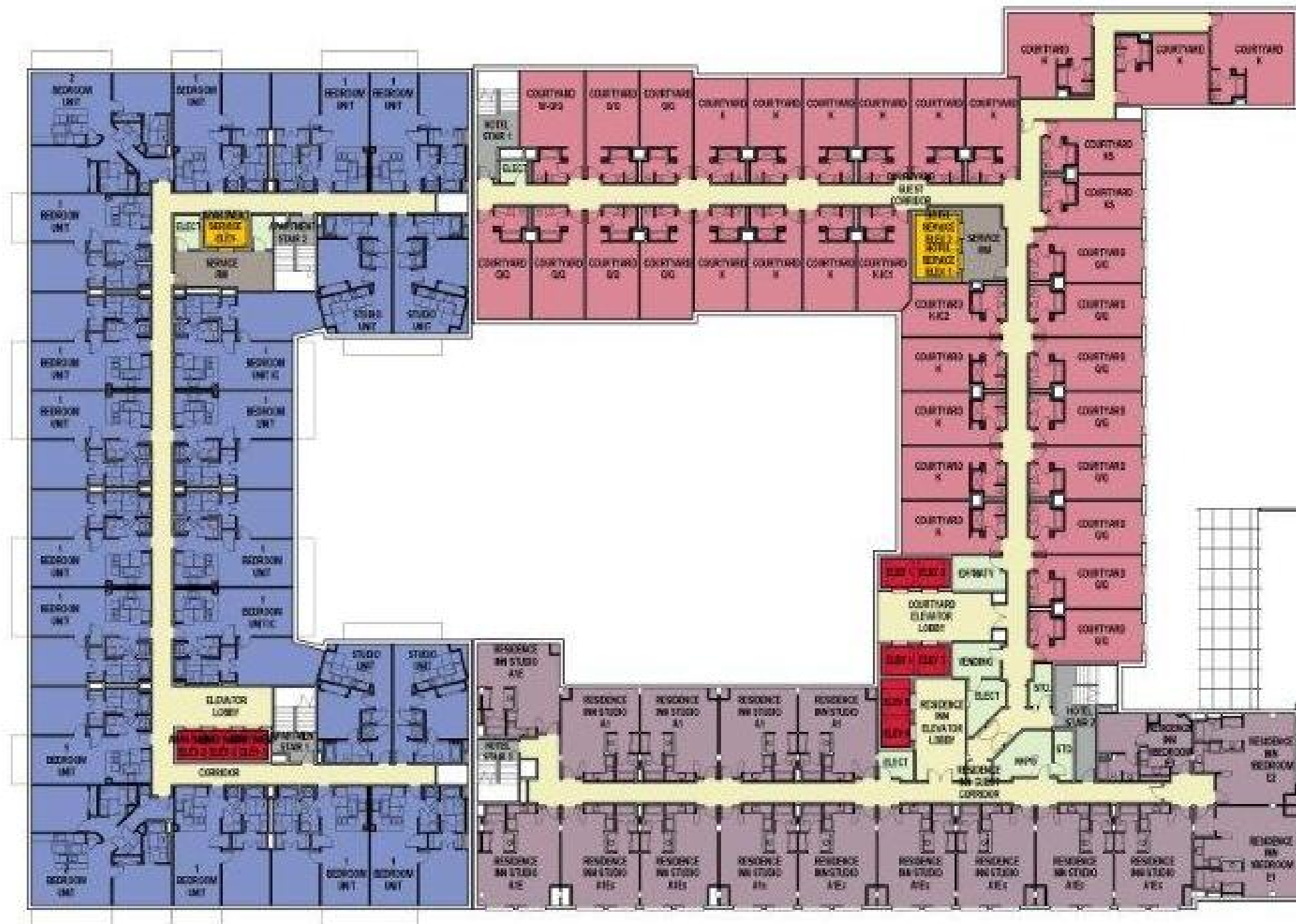


COOPER CARRY  
 tvsdesign

HPRB 369

A-610





Compared to older option with Demolition of Lurgan Building:  
 Loss of 1 RI per floor. 10 floors= Total 10 Keys lost  
 Loss of 5 Apartments per floor. 10 Floors=50 Apartments lost

Information presented at City of Atlanta Hearing and submitted with PUD as Supplemental Information

PROJECT N° 20110015 / 03862-001

ISSUE DATE: NOVEMBER 20, 2014

MAYOR'S AGENT  
 HEARING PRESENTATION  
 DECEMBER 12, 2014

COLUMBIA PLACE - BLOCK 369  
 Square 369, Washington, DC

© 2014 Cooper Carry, Inc., 191 Peachtree Street NE, Suite 2400, Atlanta, Georgia 30303 Tel. 404-237-2000 Fax 404-237-0276



COOPER CARRY  
 tvsdesign

HPRB 369

A-611