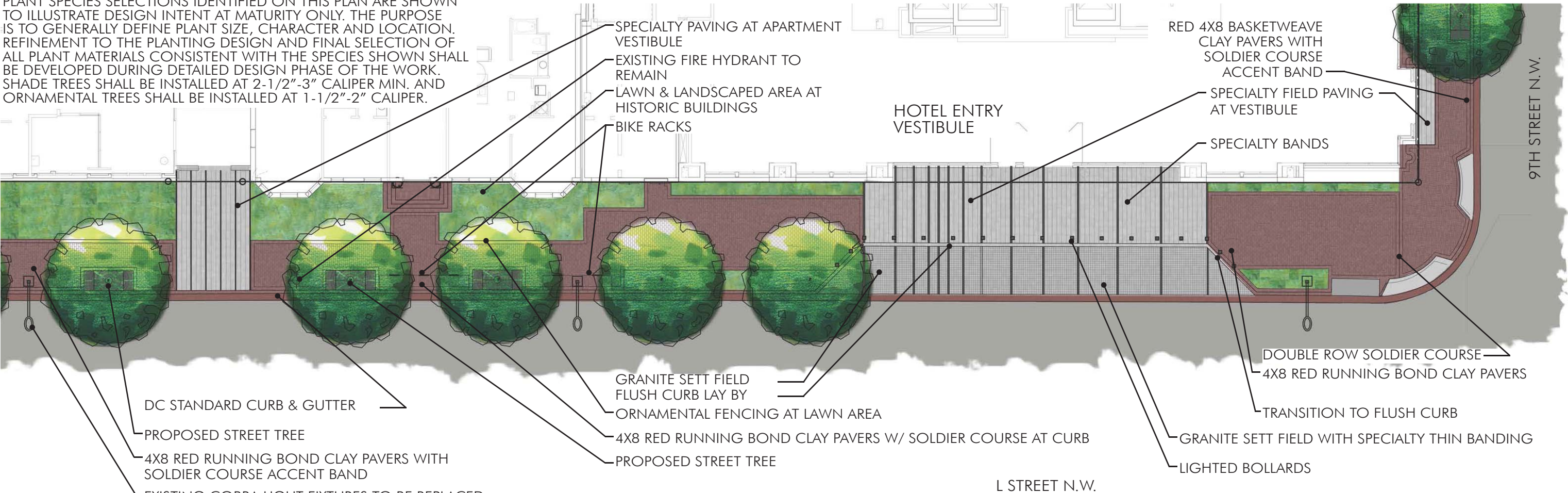


NOTE:
PLANT SPECIES SELECTIONS IDENTIFIED ON THIS PLAN ARE SHOWN TO ILLUSTRATE DESIGN INTENT AT MATURITY ONLY. THE PURPOSE IS TO GENERALLY DEFINE PLANT SIZE, CHARACTER AND LOCATION. REFINEMENT TO THE PLANTING DESIGN AND FINAL SELECTION OF ALL PLANT MATERIALS CONSISTENT WITH THE SPECIES SHOWN SHALL BE DEVELOPED DURING DETAILED DESIGN PHASE OF THE WORK. SHADE TREES SHALL BE INSTALLED AT 2-1/2"-3" CALIPER MIN. AND ORNAMENTAL TREES SHALL BE INSTALLED AT 1-1/2"-2" CALIPER.

DC STANDARD CURB & GUTTER
PROPOSED STREET TREE
4X8 RED RUNNING BOND CLAY PAVERS WITH SOLDIER COURSE ACCENT BAND
EXISTING COBRA LIGHT FIXTURES TO BE REPLACED WITH WASHINGTON GLOBE STYLE FIXTURE. REQUIRES REVIEW & APPROVAL BY DDOT.



LINEAR PAVING & LIGHTING



LINEAR PAVING & LIGHTING



LINEAR PAVING & LIGHTING



BANDING CONCEPT IMAGE


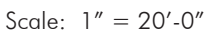



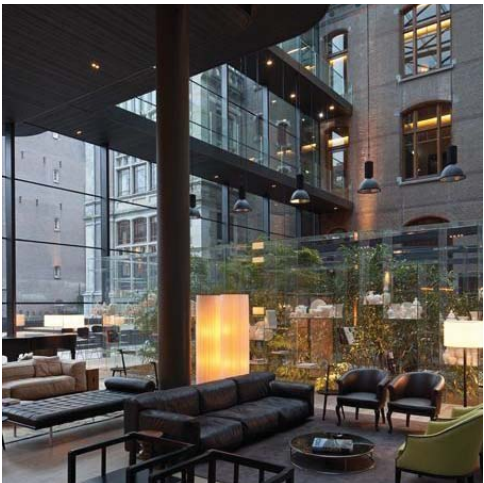
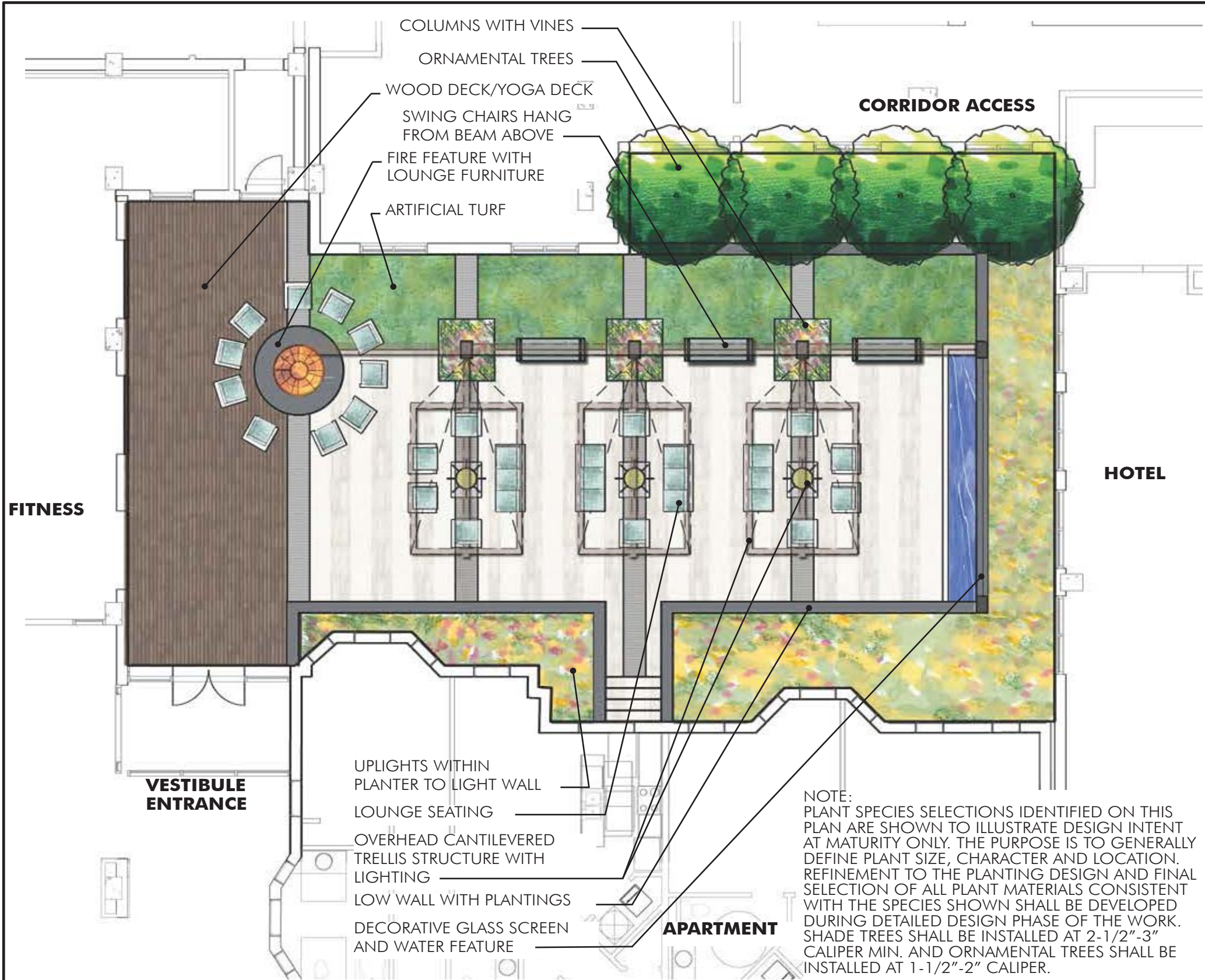
BANDING & LIGHTING CONCEPT IMAGE



BANDING & LIGHTING CONCEPT IMAGE

PRE-HEARING SUBMISSION

PROJECT N° 20110015 / 03862-001		ISSUE DATE: 01.09.2015	STREETSCAPE ENLARGEMENT PLAN			PUD 369
PUD 369 SUBMISSION			COLUMBIA PLACE - BLOCK 369 <i>Square 369, Washington, DC</i> Scale: 1" = 20'-0"  			L1.02
			© 2014 Cooper Carry, Inc., 191 Peachtree Street NE, Suite 2400, Atlanta, Georgia 30303 Tel. 404-237-2000 Fax 404-237-0276		ZONING COMMISSION District of Columbia CASE NO. 14-03 EXHIBIT NO. 50A15	



OVERALL CONCEPT IMAGE



FIRE PIT/ FIRE PLACE



GLASS WATER WALL CONCEPTS


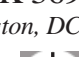


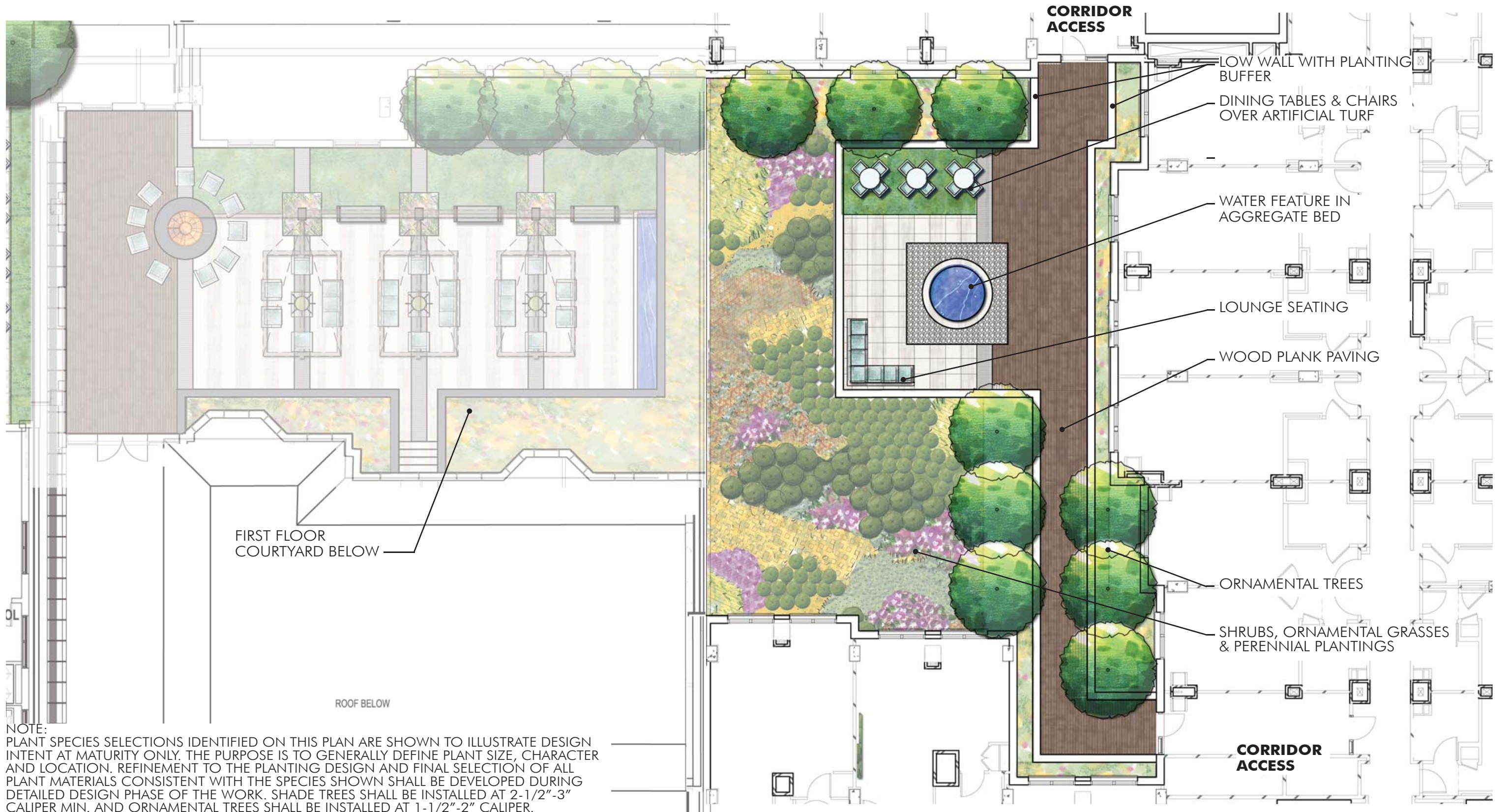
SWINGS



TRELLIS CONCEPTS

PRE-HEARING SUBMISSION

PROJECT N° 20110015 / 03862-001		ISSUE DATE: 01.09.2015	GROUND FLOOR COURTYARD ENLARGEMENT			PUD 369
PUD 369 SUBMISSION			<div>COLUMBIA PLACE - BLOCK 369</div> <div>Square 369, Washington, DC</div> <div>Scale: 1" = 10'-0"</div> <div> </div> <div>© 2014 Cooper Carry, Inc., 191 Peachtree Street NE, Suite 2400, Atlanta, Georgia 30303 Tel. 404-237-2000 Fax 404-237-0276</div>			L1.03



PRE-HEARING SUBMISSION

PROJECT N° 20110015 / 03862-001

ISSUE DATE: 01.09.2015

4TH LEVEL TERRACE ENLARGEMENT

PUD 369 SUBMISSION

COLUMBIA PLACE - BLOCK 369

Square 369, Washington, DC

Scale: NTS

0 5' 10' 20'

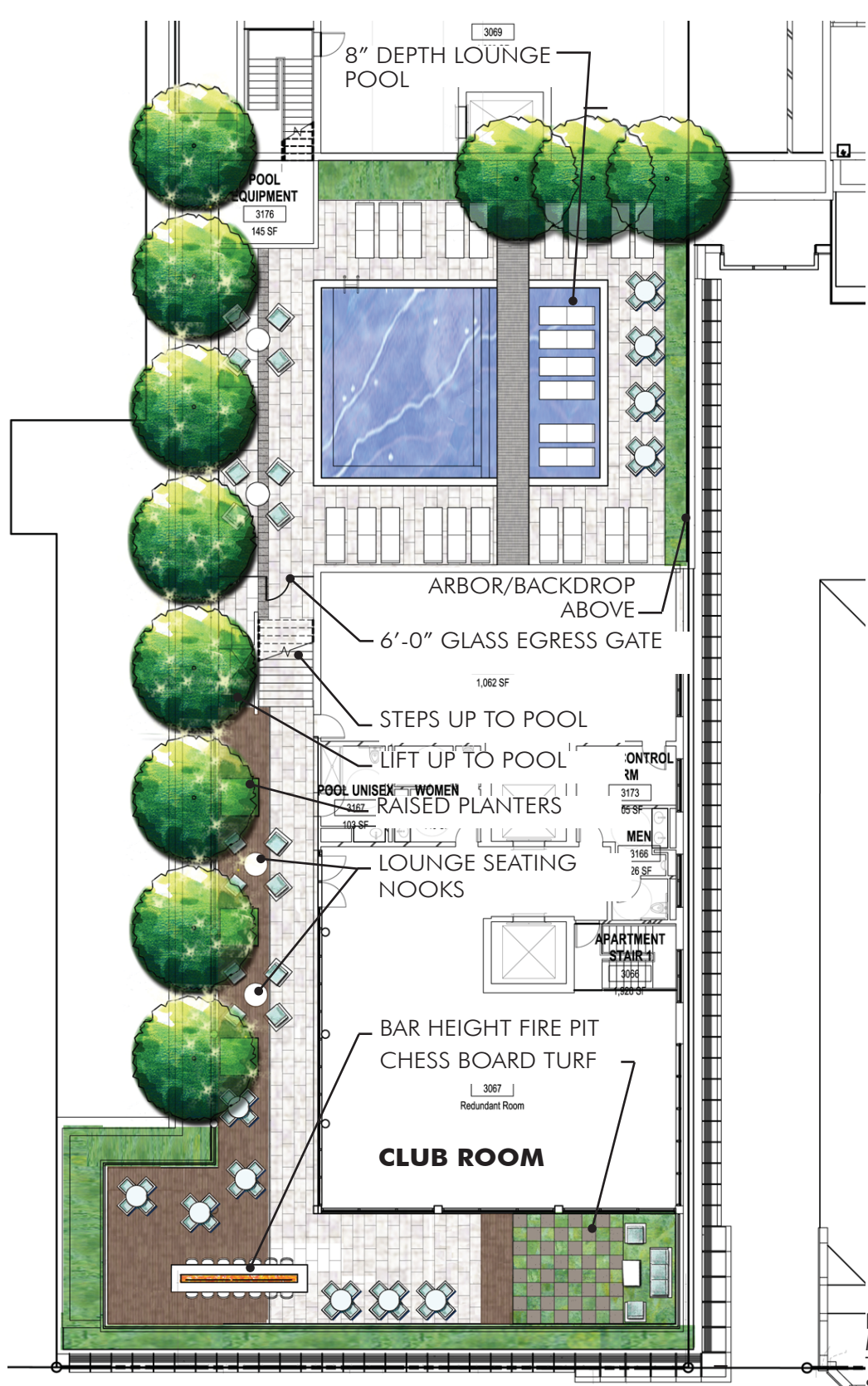


STUDIO39

PUD 369

L1.04

© 2014 Cooper Carry, Inc., 191 Peachtree Street NE, Suite 2400, Atlanta, Georgia 30303 Tel. 404-237-2000 Fax 404-237-0276



BAR HEIGHT FIRE PIT



FIRE PIT CONCEPT IMAGE



CHESS BOARD CONCEPT IMAGE



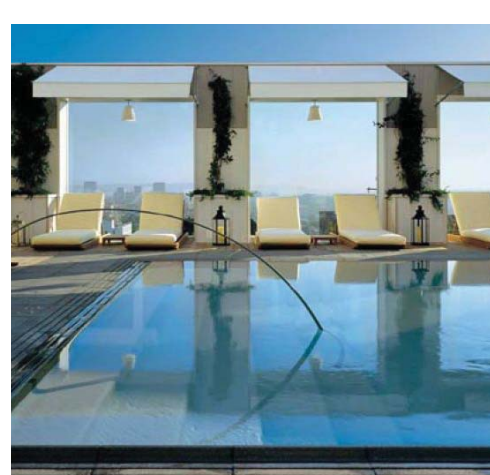
SEATING NOOK CHAIRS



PAVING & TURF CONCEPT IMAGE



PAVING & TURF CONCEPT IMAGE



FRAMED ARBOR & HANDRAIL CONCEPT IMAGE



ARBOR CONCEPT IMAGE



CONCEPT IMAGE



CONCEPT IMAGE



LINEAR BAND WIDE COPING



FRAMED ARBOR CONCEPT IMAGE

NOTE: PLANT SPECIES SELECTIONS IDENTIFIED ON THIS PLAN ARE SHOWN TO ILLUSTRATE DESIGN INTENT AT MATURITY ONLY. THE PURPOSE IS TO GENERALLY DEFINE PLANT SIZE, CHARACTER AND LOCATION. REFINEMENT TO THE PLANTING DESIGN AND FINAL SELECTION OF ALL PLANT MATERIALS CONSISTENT WITH THE SPECIES SHOWN SHALL BE DEVELOPED DURING DETAILED DESIGN PHASE OF THE WORK. SHADE TREES SHALL BE INSTALLED AT 2-1/2" - 3" CALIPER MIN. AND ORNAMENTAL TREES SHALL BE INSTALLED AT 1-1/2" - 2" CALIPER.

PRE-HEARING SUBMISSION

PROJECT N° 20110015 / 03862-001 | ISSUE DATE: 01.09.2015

PUD 369 SUBMISSION

CLUB ROOM & POOL DECK ENLARGEMENT

COLUMBIA PLACE - BLOCK 369
Square 369, Washington, DC

Scale: 1" = 20'-0"
0 5' 10' 20' NORTH

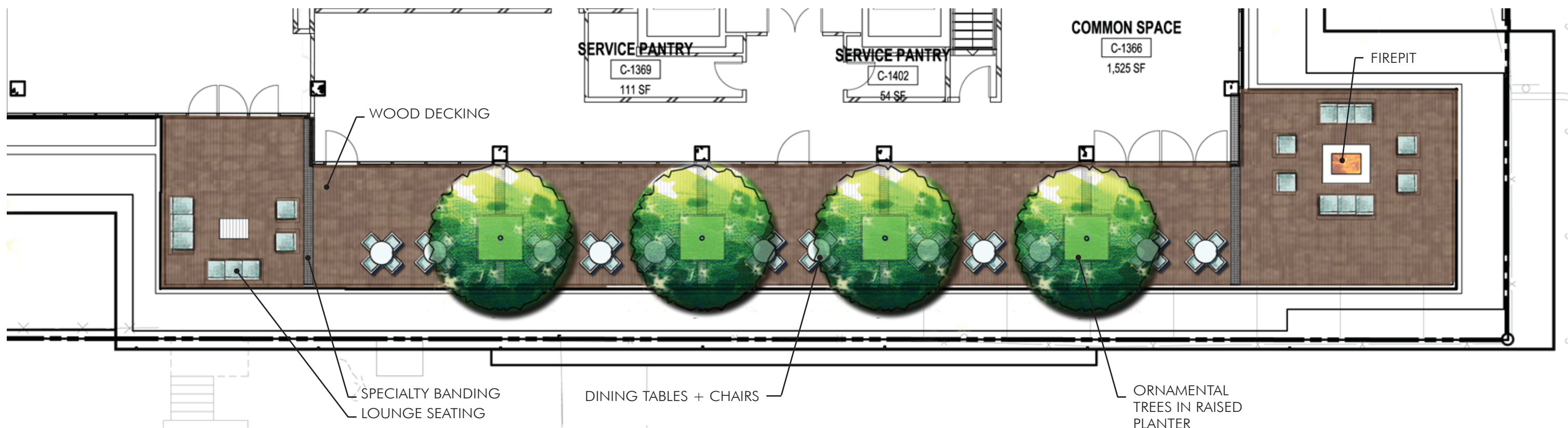


PUD 369

L1.05



SEATING NOOK CHAIRS



NOTE:
PLANT SPECIES SELECTIONS IDENTIFIED ON THIS PLAN ARE SHOWN TO ILLUSTRATE DESIGN INTENT AT MATURITY ONLY. THE PURPOSE IS TO GENERALLY DEFINE PLANT SIZE, CHARACTER AND LOCATION. REFINEMENT TO THE PLANTING DESIGN AND FINAL SELECTION OF ALL PLANT MATERIALS CONSISTENT WITH THE SPECIES SHOWN SHALL BE DEVELOPED DURING DETAILED DESIGN PHASE OF THE WORK. SHADE TREES SHALL BE INSTALLED AT 2-1/2"-3" CALIPER MIN. AND ORNAMENTAL TREES SHALL BE INSTALLED AT 1-1/2"-2" CALIPER.

PRE-HEARING SUBMISSION

PROJECT N° 20110015 / 03862-001

ISSUE DATE: 01.09.2015

HOTEL ROOF DECK ENLARGEMENT

PUD 369 SUBMISSION

COLUMBIA PLACE - BLOCK 369
Square 369, Washington, DC

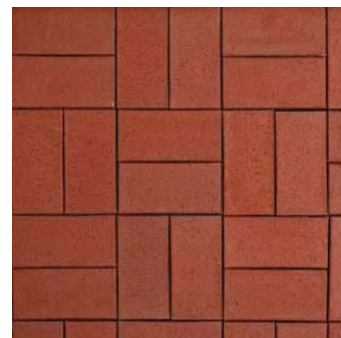
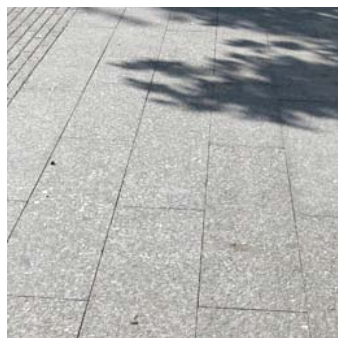
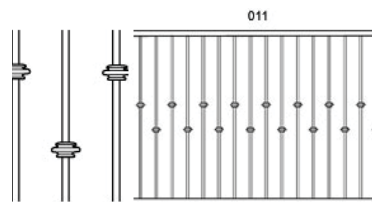
Scale: 3/32" = 1'-0"
0 2.5' 5' 12' NORTH

© 2014 Cooper Carry, Inc., 191 Peachtree Street NE, Suite 2400, Atlanta, Georgia 30303 Tel. 404-237-2000 Fax 404-237-0276



PUD 369

L1.06



NOTE:
PLANT SPECIES SELECTIONS IDENTIFIED ON THIS PLAN ARE SHOWN TO ILLUSTRATE DESIGN INTENT AT MATURITY ONLY. THE PURPOSE IS TO GENERALLY DEFINE PLANT SIZE, CHARACTER AND LOCATION. REFINEMENT TO THE PLANTING DESIGN AND FINAL SELECTION OF ALL PLANT MATERIALS CONSISTENT WITH THE SPECIES SHOWN SHALL BE DEVELOPED DURING DETAILED DESIGN PHASE OF THE WORK. SHADE TREES SHALL BE INSTALLED AT 2-1/2"-3" CALIPER MIN. AND ORNAMENTAL TREES SHALL BE INSTALLED AT 1-1/2"-2" CALIPER.

PRE-HEARING SUBMISSION

PROJECT N° 20110015 / 03862-001

ISSUE DATE: 01.09.2015

HARDSCAPE + STREETSCAPE ELEMENTS

PUD 369 SUBMISSION

COLUMBIA PLACE - BLOCK 369
Square 369, Washington, DC



PUD 369

L1.07

© 2014 Cooper Carry, Inc., 191 Peachtree Street NE, Suite 2400, Atlanta, Georgia 30303 Tel. 404-237-2000 Fax 404-237-0276

Streetscape Trees



SCARLET OAK
Quercus coccinea
9th Street



LONDON PLANETREE
Plantanus acerifolia
L Street

Ornamental Trees



WATERFALL JAPANESE MAPLE
Acer palatum 'Waterfall'



NATCHEZ CrapeMYRTLE
Lagerstroemia indica 'Natchez'

Green Roof



STIPA TENUISSIMA
Nasella tenuissima



SEDUM SPEC.



SEDUM SPEC.



SEDUM SPEC.

Shrubs



JAPANESE AUCUBA
Aucuba japonica
'Rozannie'



OSAKAZUKI AZALEA
Rhododendron
'Osakazuki'



WINTERGREEN BOXWOOD
Buxus microphylla

Perennials/Ornamental Grasses/ Ferns



FEATHER REED GRASS
Calamagrostis acutifolia 'Karl Foerster'



CREeping PHLOX
Phlox stolonifera 'Sherwood Purple'



HEAVY METAL SWITCH GRASS
Panicum virgatum 'Heavy Metal'



MOONBEAM COREOPSIS
Coreopsis verticula 'Moonbeam'



MONDO GRASS
Ophiopogon japonicus



DOROTHY WYCKOFF PIERIS
Peiris japonica 'DOROTHY WYCKOFF'



OTTO LUYKENS CHERRY LAUREL
Prunus laurocerasus 'Otto Luykens'



GIRARD'S CRIMSON AZALEA
Rhododendron 'Girard's Crimson'



CAROLINA YELLOW JESSAMINE
Gelsemium sempervirens



EVERGREEN CLEMATIS
Clematis armandii



PINK MUHLY GRASS
Muhlenbergia capillaris



LADY IN RED FERN
Athyrium filix-femina



OAKLEAF FOAM FLOWER
Tiarella cordifolia 'Collina'

NOTE:
PLANT SPECIES SELECTIONS IDENTIFIED ON THIS PLAN ARE SHOWN TO ILLUSTRATE DESIGN INTENT AT MATURITY ONLY. THE PURPOSE IS TO GENERALLY DEFINE PLANT SIZE, CHARACTER AND LOCATION. REFINEMENT TO THE PLANTING DESIGN AND FINAL SELECTION OF ALL PLANT MATERIALS CONSISTENT WITH THE SPECIES SHOWN SHALL BE DEVELOPED DURING DETAILED DESIGN PHASE OF THE WORK. SHADE TREES SHALL BE INSTALLED AT 2-1/2"-3" CALIPER MIN. AND ORNAMENTAL TREES SHALL BE INSTALLED AT 1-1/2"-2" CALIPER.

PRE-HEARING SUBMISSION

PROJECT N° 20110015 / 03862-001

ISSUE DATE: 01.09.2015

PLANT SCHEDULE

PUD 369 SUBMISSION

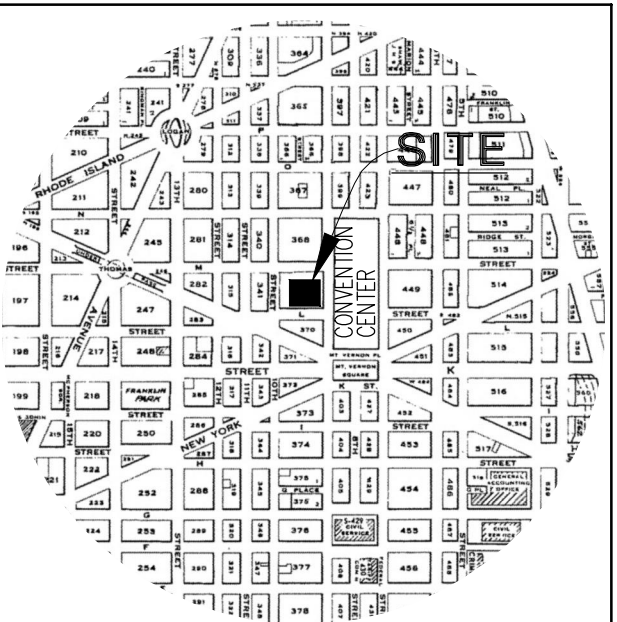
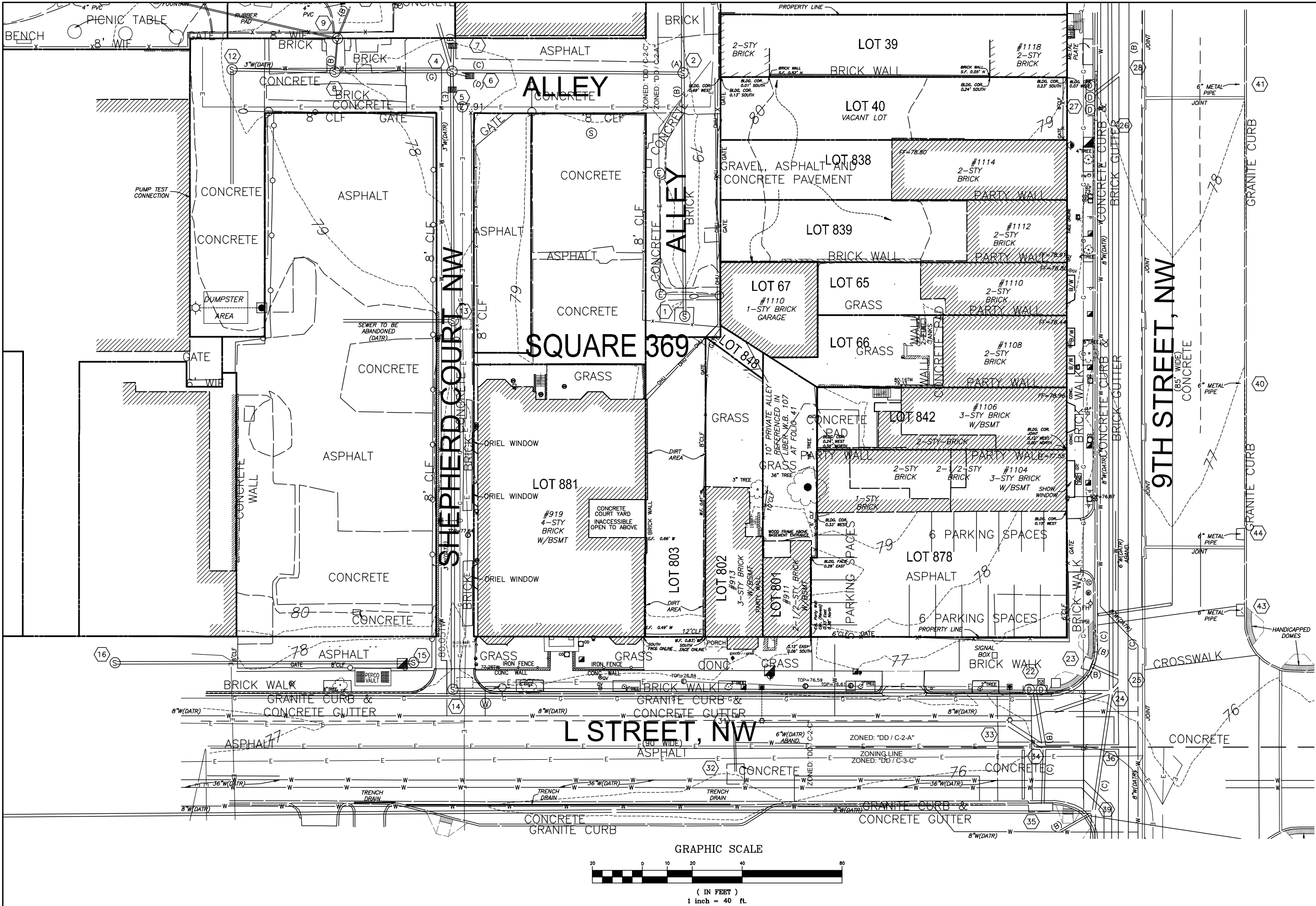
COLUMBIA PLACE - BLOCK 369
Square 369, Washington, DC



XXXX
STUDIO39
XXXX

PUD 369

L1.08



VICINITY MAP
NOT TO SCALE

LEGEND

- TOP OF WALL
- TRASH CAN
- UNDG. TRAF. LINE
- TRAF. SIGNAL POLE
- TRAF. SIGNAL BOX
- SIGN
- PARKING METER
- UTILITY MANHOLE
- TELEPHONE POLE
- TELEPHONE MANHOLE
- LIGHT POLE
- LAMP POST
- ELECTRIC MANHOLE
- ELEC. JUNC. BOX
- GROUND SHOT
- SAN. SEW. MH
- CLEAN OUT
- WATER VALVE
- WATER METER
- WATER MANHOLE
- FIRE HYDRANT
- GAS VALVE
- POST
- BOLLARD
- STEEL PLATES
- BUILDINGS
- ADJACENT LOT BUILDINGS

PROJECT N° 20110015 / 03862 | January 9, 2015

PUD 369 SUBMISSION

EXISTING CONDITIONS

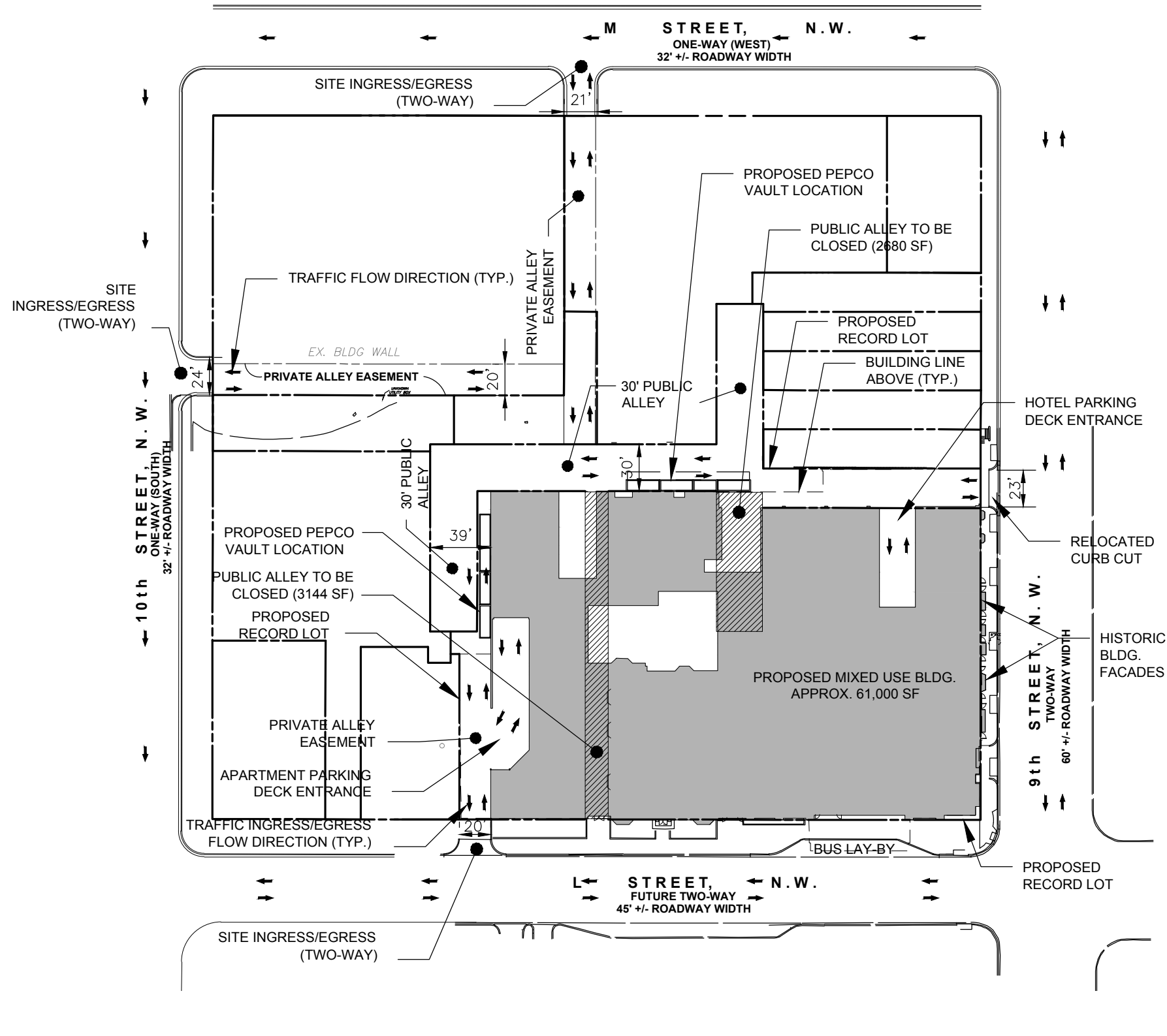
PUD 369
Square 369, Washington, DC



PROFESSIONAL ENGINEERS
& LAND SURVEYORS
10 G STREET, NE, SUITE 430
WASHINGTON, DC, 20002
PH: (202) 289-4545
FAX: (202) 289-5051

PUD 369

C 1.0



PROJECT N° 20110015 / 03862

January 9, 2015

CONCEPT CONTEXT PLAN

PUD 369 SUBMISSION

© 2014 AMT, LLC 10 G ST NE SUITE 430 WASHINGTON, DC 20002 (202) 289-4545

PUD 369

Square 369, Washington, DC

AMT LLC

PROFESSIONAL ENGINEERS
& LAND SURVEYORS
10 G STREET, NE, SUITE 430
WASHINGTON, DC, 20002
PH: (202) 289-4545
FAX: (202) 289-5051

PUD 369

C 2.0