



PRE-HEARING SUBMISSION

PROJECT N° 20110015 / 03862-001

ISSUE DATE: 01.09.2015

RENDERING – 9TH STREET VIEW

COLUMBIA PLACE - BLOCK 369  
Square 369, Washington, DC

PUD 369 SUBMISSION

© 2014 Cooper Carry, Inc., 191 Peachtree Street NE, Suite 2400, Atlanta, Georgia 30303 Tel. 404-237-2000 Fax 404-237-0276



COOPER CARRY

tvdesign

PUD 369

ZONING COMMISSION  
District of Columbia  
CASE NO. 14-05  
EXHIBIT NO. 50A14  
**A-516**



PRE-HEARING SUBMISSION

PROJECT N° 20110015 / 03862-001

ISSUE DATE: 01.09.2015

RENDERING – 9TH STREET VIEW

COLUMBIA PLACE - BLOCK 369  
*Square 369, Washington, DC*

PUD 369 SUBMISSION

© 2014 Cooper Carry, Inc., 191 Peachtree Street NE, Suite 2400, Atlanta, Georgia 30303 Tel. 404-237-2000 Fax 404-237-0276



COOPER CARRY

tvdesign

PUD 369

A-517



PRE-HEARING SUBMISSION

PROJECT N° 20110015 / 03862-001

ISSUE DATE: 01.09.2015

TRAFFIC PATTERN / CIRCULATION PLAN

COLUMBIA PLACE - BLOCK 369  
Square 369, Washington, DC

PUD 369 SUBMISSION

© 2014 Cooper Carry, Inc., 191 Peachtree Street NE, Suite 2400, Atlanta, Georgia 30303 Tel. 404-237-2000 Fax 404-237-0276

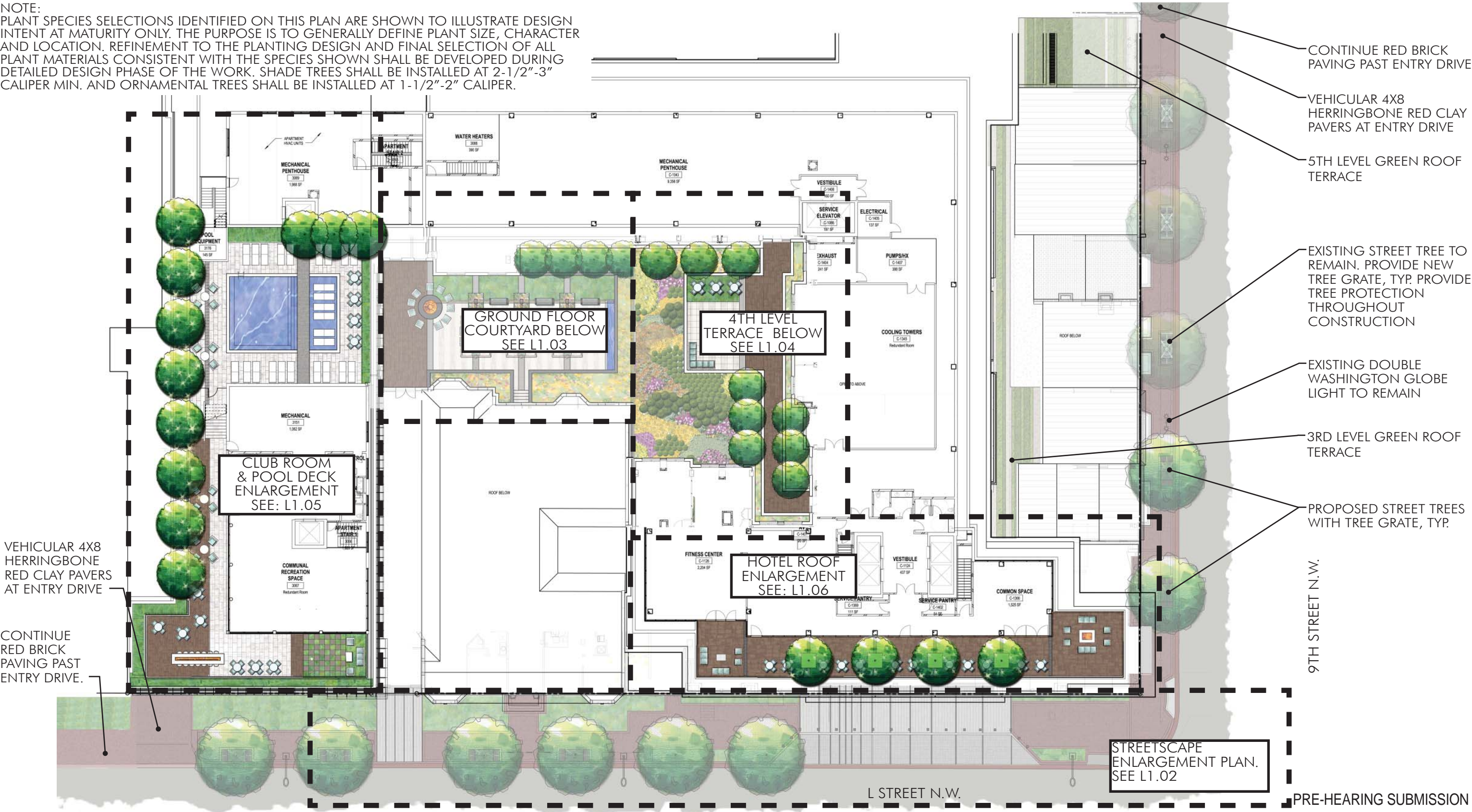


COOPER CARRY  
tvdsdesign

PUD 369

A-517

NOTE:  
PLANT SPECIES SELECTIONS IDENTIFIED ON THIS PLAN ARE SHOWN TO ILLUSTRATE DESIGN INTENT AT MATURITY ONLY. THE PURPOSE IS TO GENERALLY DEFINE PLANT SIZE, CHARACTER AND LOCATION. REFINEMENT TO THE PLANTING DESIGN AND FINAL SELECTION OF ALL PLANT MATERIALS CONSISTENT WITH THE SPECIES SHOWN SHALL BE DEVELOPED DURING DETAILED DESIGN PHASE OF THE WORK. SHADE TREES SHALL BE INSTALLED AT 2-1/2"-3" CALIPER MIN. AND ORNAMENTAL TREES SHALL BE INSTALLED AT 1-1/2"-2" CALIPER.



PROJECT N° 20110015 / 03862-001 ISSUE DATE: 01.09.2015

PUD 369 SUBMISSION

© 2014 Cooper Carry, Inc., 191 Peachtree Street NE, Suite 2400, Atlanta, Georgia 30303 Tel. 404-237-2000 Fax 404-237-0276

OVERALL ROOF PLAN  
COLUMBIA PLACE - BLOCK 369  
Square 369, Washington, DC  
Scale: 1" = 30'-0"  
0 10' 20' 30' NORTH



PUD 369

L1.01