



Canopy at L St
 Darker canopy structure
 Lighter glass
 Setback at interior court
 Darker Penthouse

POST-HEARING SUBMISSION

PROJECT N° 20110015 / 03862-001

ISSUE DATE: 02.12.2015

RENDERING CANOPY- STREET VIEW- ENTRY

PUD 369 SUBMISSION
 POST-HEARING SUBMISSION

COLUMBIA PLACE - BLOCK 369
Square 369, Washington, DC

© 2014 Cooper Carry, Inc., 191 Peachtree Street NE, Suite 2400, Atlanta, Georgia 30303 Tel. 404-237-2000 Fax 404-237-0276



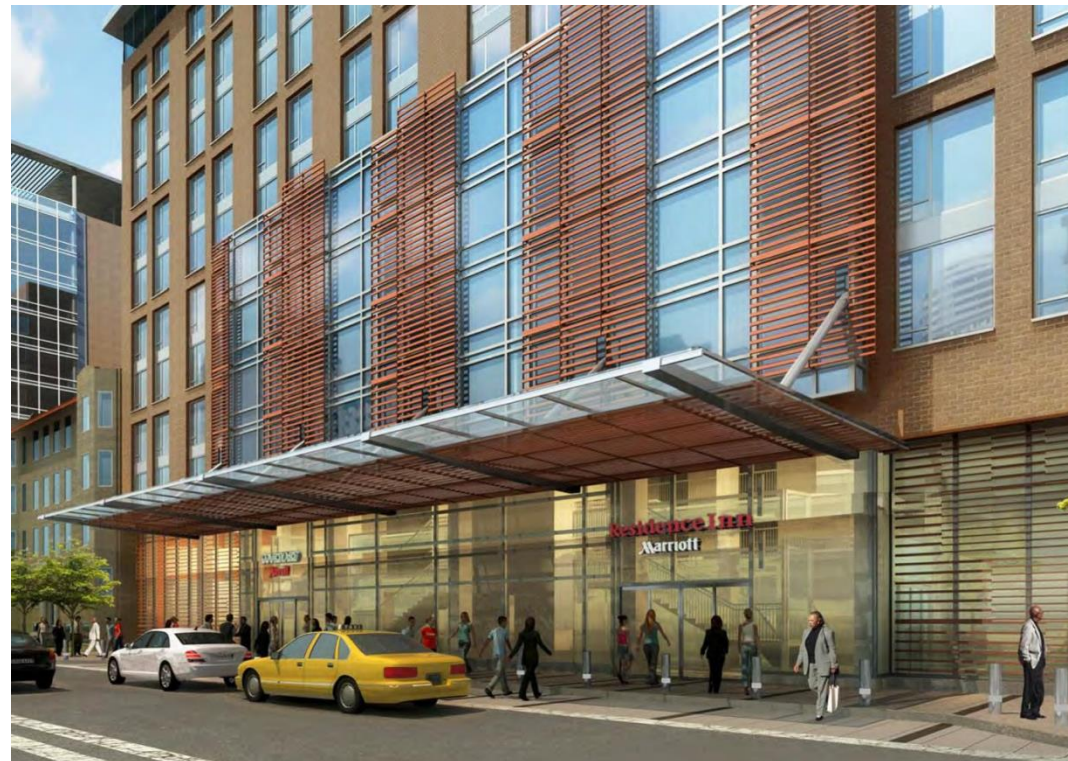
COOPER CARRY
 tvsdesign

PUD 369

ZONING COMMISSION
 District of Columbia
 CASE NO. 14-05
 EXHIBIT NO. 63A5
A.514



CANOPY RENDERING
As submitted 1-29-15



CANOPY RENDERING
As submitted 09-18-2014 HPRB
Canopy size: 87'-4" x 24'-6"



CANOPY RENDERING
As submitted 2-12-15
Canopy Size: 64'-2" x 19'-8"

Canopy at L St: Darker canopy
Structure; Lighter glass
POST-HEARING SUBMISSION

PROJECT N° 20110015 / 03862-001 ISSUE DATE: 02.12.2015

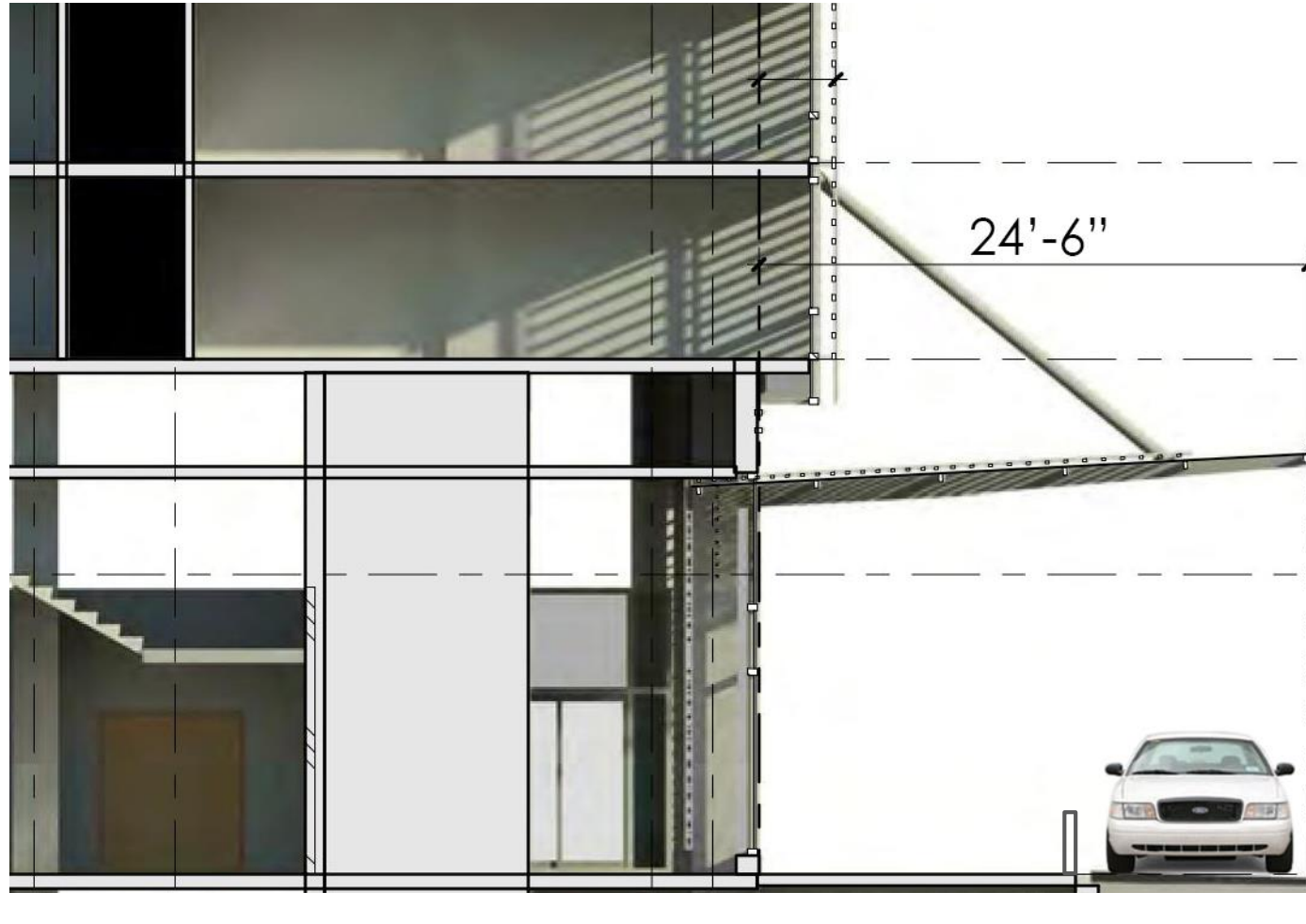
PUD 369 SUBMISSION
POST-HEARING SUBMISSION

© 2014 Cooper Carry, Inc., 191 Peachtree Street NE, Suite 2400, Atlanta, Georgia 30303 Tel. 404-237-2000 Fax 404-237-0276

RENDERING CANOPY- STREET VIEW- ENTRY

COLUMBIA PLACE - BLOCK 369
Square 369, Washington, DC

 COOPER CARRY tvsdesign	PUD 369
	A-514A



CANOPY SECTION
As submitted 09-18-2014 HPRB
Canopy size: 87'-4" x 24'-6"



CANOPY SECTION
As submitted 2-12-15
Canopy Size: 64'-2" x 19'-8"

Canopy at L St:
Canopy Reduction from ZC Setdown

POST-HEARING SUBMISSION

PROJECT N° 20110015 / 03862-001 ISSUE DATE: 02.12.2015

RENDERING CANOPY- STREET VIEW- ENTRY

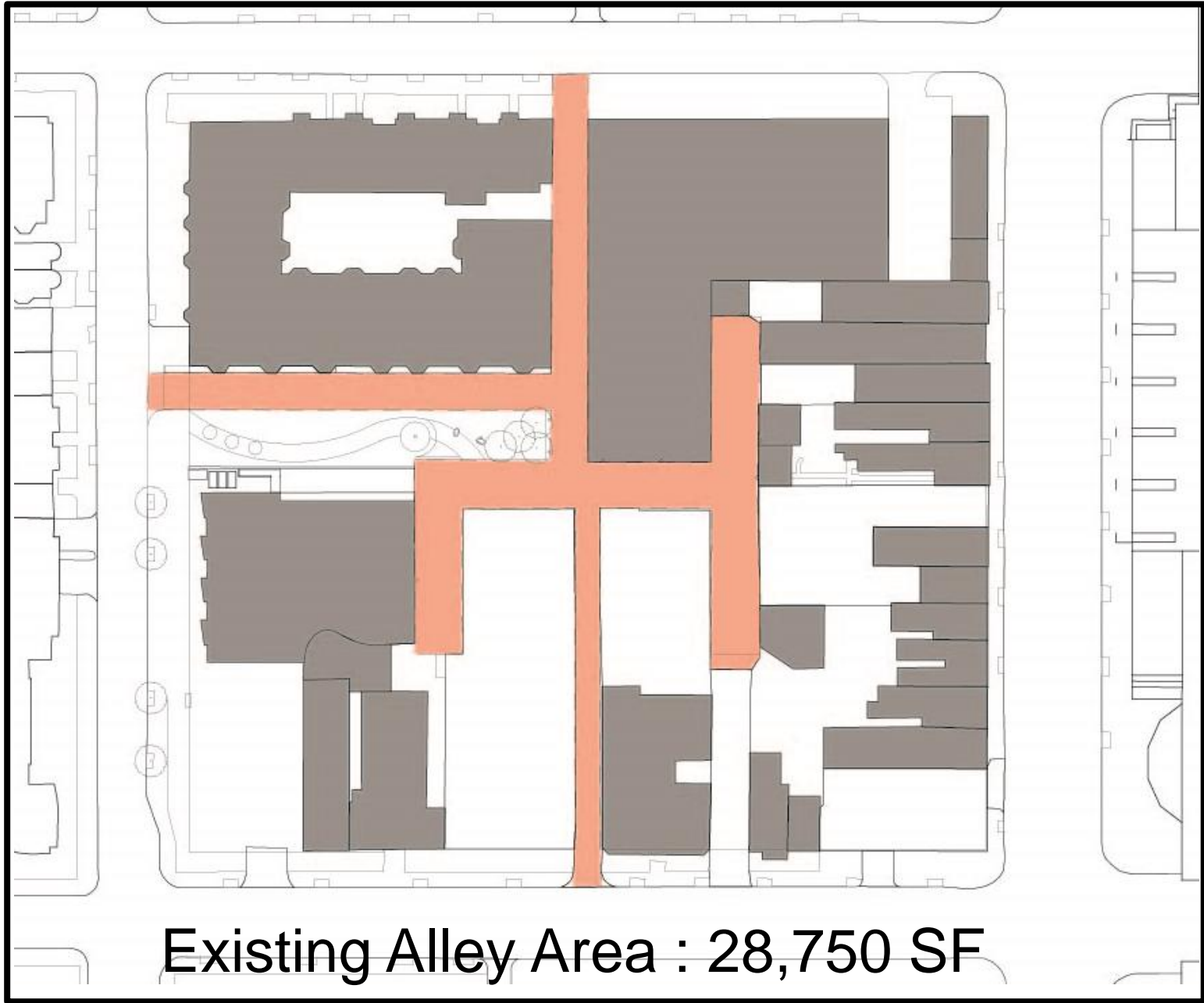
PUD 369 SUBMISSION
POST-HEARING SUBMISSION

COLUMBIA PLACE - BLOCK 369
Square 369, Washington, DC

© 2014 Cooper Carry, Inc., 191 Peachtree Street NE, Suite 2400, Atlanta, Georgia 30303 Tel. 404-237-2000 Fax 404-237-0276


COOPER CARRY
tvdesign

PUD 369
A-514B



Existing site: Alleys



Proposed site: Alleys

Increase in alley area
Approx 9% above current

POST-HEARING SUBMISSION

PROJECT N° 20110015 / 03862-001 ISSUE DATE: 02.12.2015

PUD 369 SUBMISSION
POST-HEARING SUBMISSION

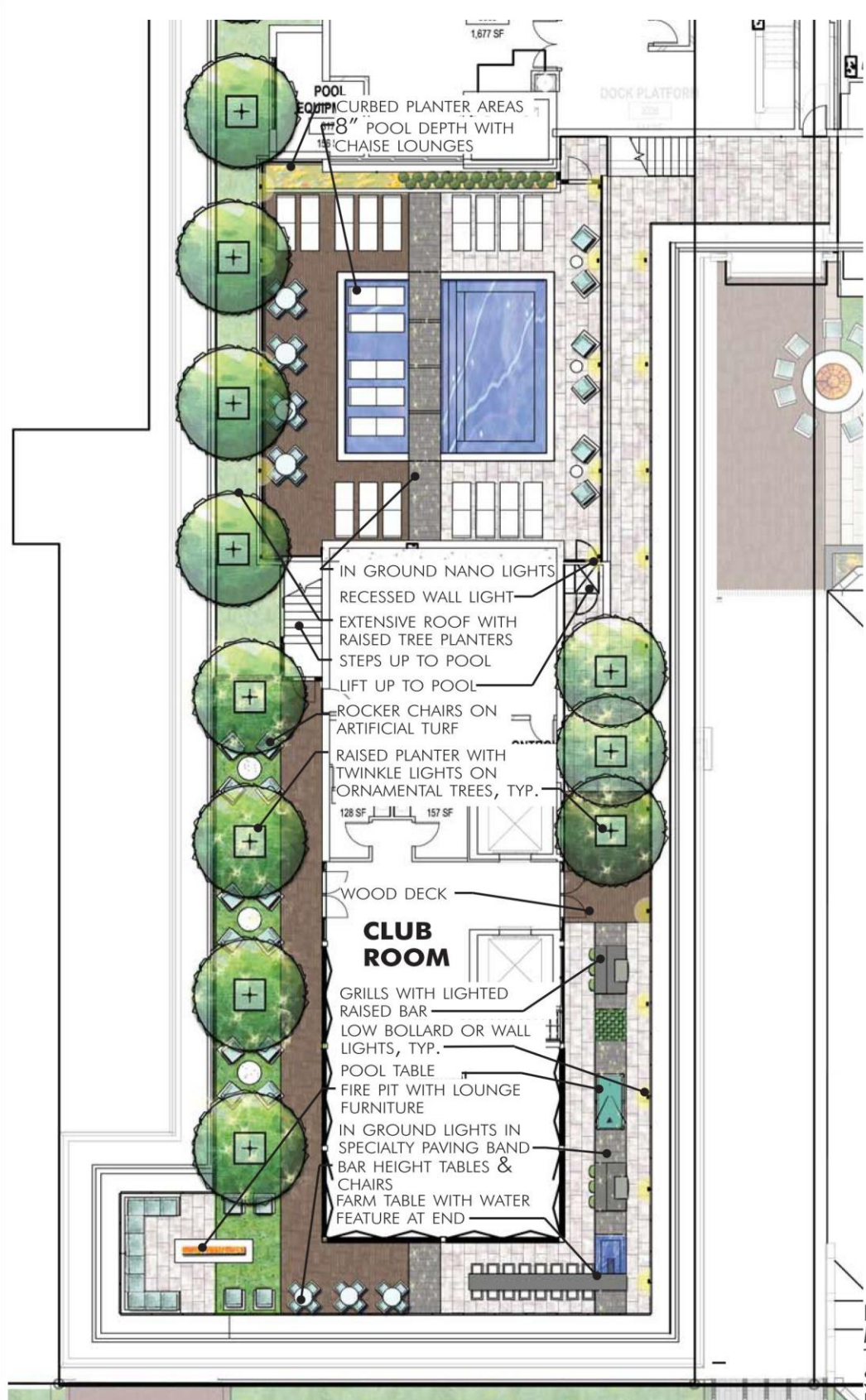
© 2014 Cooper Carry, Inc., 191 Peachtree Street NE, Suite 2400, Atlanta, Georgia 30303 Tel. 404-237-2000 Fax 404-237-0276

Existing site: Alleys

COLUMBIA PLACE - BLOCK 369
Square 369, Washington, DC


COOPER CARRY
tvdesign

PUD 369
A-010



FIRE PIT CONCEPT IMAGE



LOUNGE CHAIRS ON TURF



RECESSED WALL LIGHTS



LIGHTED RAISED BAR CONCEPT



NANO LED FLUSH INGROUND



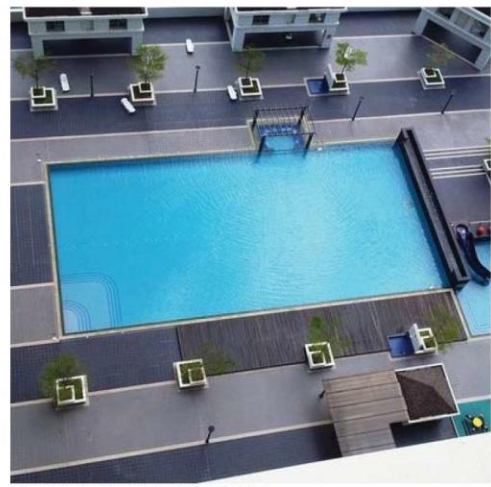
LOW BOLLARD LIGHT



WATER FEATURE & LIGHTED PAVER BANDING



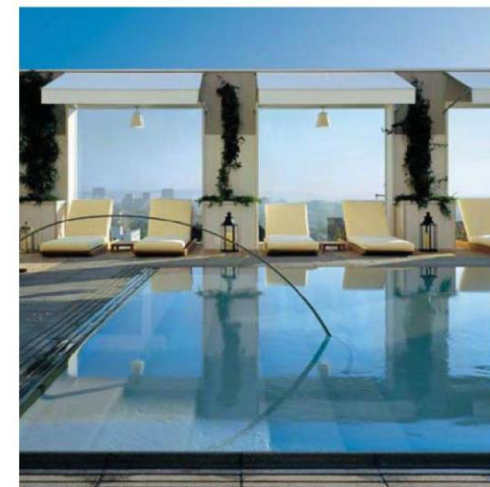
CONCEPT IMAGE



CONCEPT IMAGE



LINEAR BAND WIDE COPING



FRAMED ARBOR & HANDRAIL CONCEPT IMAGE

NOTE: PLANT SPECIES SELECTIONS IDENTIFIED ON THIS PLAN ARE SHOWN TO ILLUSTRATE DESIGN INTENT AT MATURITY ONLY. THE PURPOSE IS TO GENERALLY DEFINE PLANT SIZE, CHARACTER AND LOCATION. REFINEMENT TO THE PLANTING DESIGN AND FINAL SELECTION OF ALL PLANT MATERIALS CONSISTENT WITH THE INTENT SHOWN SHALL BE DEVELOPED DURING DETAILED DESIGN PHASE OF THE WORK. SHADE TREES SHALL BE INSTALLED AT 2-1/2" - 3" CALIPER MIN. AND ORNAMENTAL TREES SHALL BE INSTALLED AT 1-1/2" - 2" CALIPER.

POST HEARING SUBMISSION



HAMMOCKS



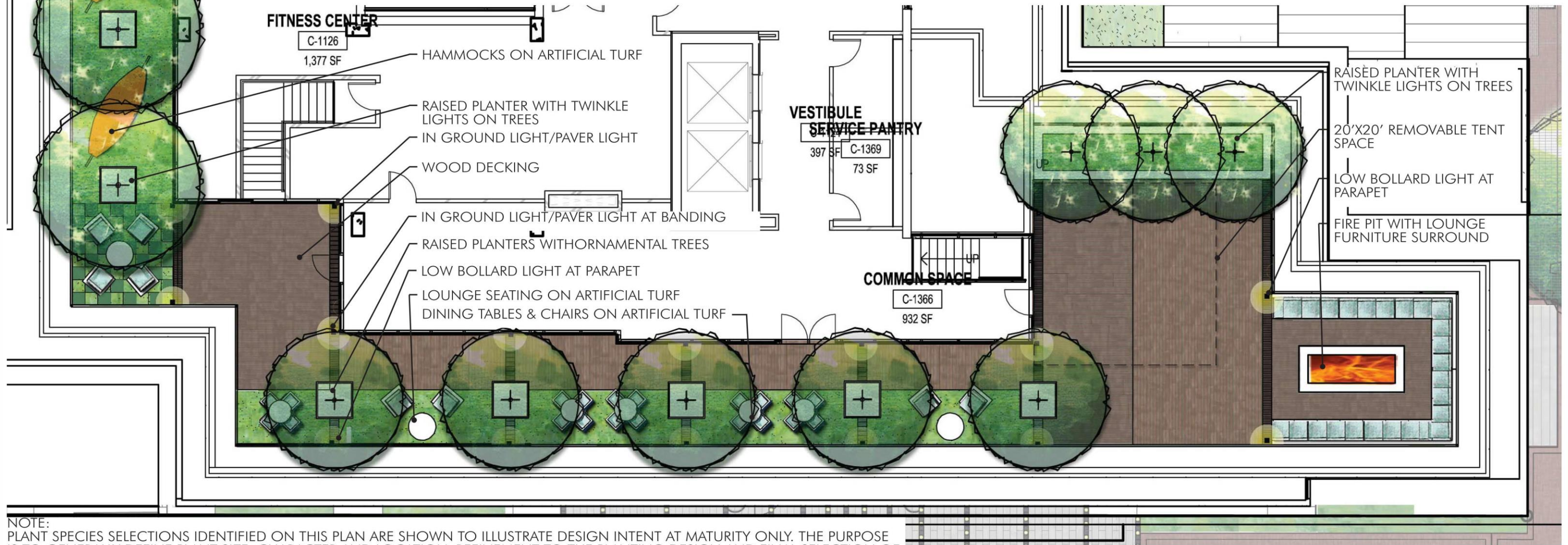
CHESSEBOARD TURF



SEATING NOOK CHAIRS ON TURF



SEATING NOOK CHAIRS



NOTE:
PLANT SPECIES SELECTIONS IDENTIFIED ON THIS PLAN ARE SHOWN TO ILLUSTRATE DESIGN INTENT AT MATURITY ONLY. THE PURPOSE IS TO GENERALLY DEFINE PLANT SIZE, CHARACTER AND LOCATION. REFINEMENT TO THE PLANTING DESIGN AND FINAL SELECTION OF ALL PLANT MATERIALS CONSISTENT WITH THE INTENT SHOWN SHALL BE DEVELOPED DURING DETAILED DESIGN PHASE OF THE WORK. SHADE TREES SHALL BE INSTALLED AT 2-1/2" - 3" CALIPER MIN. AND ORNAMENTAL TREES SHALL BE INSTALLED AT 1-1/2" - 2" CALIPER.

POST HEARING SUBMISSION



LOT AREA: 70,780 SF
ZONE: C-3-C (REQUIRED G.A.R. = 0.20)
HISTORIC FOOTPRINT CONTRIBUTION: 14,873 SF
G.A.R. LOT AREA: 55,907 SF
VEGETATED "GREEN ROOFS"
2"-8" GROWTH MEDIUM: 10,000 SF
VEGETATED "GREEN ROOFS"
OVER 8" GROWTH MEDIUM: 4,200 SF
DESIGN G.A.R. = 0.226

Green Area Ratio Scoresheet				
Ward	Lot	Square	Zoning District	
enter sq ft of lot		55,907	enter sq ft of lot	55,907
Lot size (enter this value first) *		55,907	multiply	SCORE 0.226
Landscape Elements				
A	Landscaped areas (select one of the following for each area)			
1	Landscaped areas with a soil depth of less than 24"			
enter sq ft	0	0.3		
2	Landscaped areas with a soil depth of 24" or greater			
enter sq ft	0	0.6		
3	Bioretention facilities			
enter sq ft	0	0.4		
B	Plantings (credit for plants in landscaped areas from Section A)			
1	Groundcovers, or other plants less than 2' tall at maturity			
enter sq ft	773	0.2	154.6	
2	Plants, not including grasses, 2' or taller at maturity - calculated at 9 sq ft per plant (typically planted no closer than 18" on center)			
enter number of plants	784	7056	0.3	2,116.8
3	Tree canopy for all new trees 2.5" to 6" diameter or equivalent - calculated at 50 sq ft per tree			
enter number of trees	28	1400	0.5	700.0
4	Tree canopy for new trees 6" diameter or larger or equivalent - calculated at 250 sq ft per tree			
enter number of trees	0	0	0.6	
5	Tree canopy for preservation of existing tree 6" to 12" diameter or larger or equivalent - calculated at 250 sq ft per tree			
enter number of trees	0	0	0.7	
6	Tree canopy for preservation of existing tree 12" to 18" diameter or larger or equivalent - calculated at 600 sq ft per tree			
enter number of trees	0	0	0.7	
7	Tree canopy for preservation of all existing trees 18" to 24" dia. or equivalent - calculated at 1300 sq ft per tree			
enter number of trees	0	0	0.7	
8	Tree canopy for preservation of all existing trees 24" diameter or larger or equivalent - calculated at 2000 sq ft per tree			
enter number of trees	0	0	0.8	
9	Vegetated wall, plantings on a vertical surface			
enter sq ft	180	0.6	108.0	
C	Vegetated or "green" roofs			
1	Over at least 2" and less than 8" of growth medium			
enter sq ft	10,000	0.6	6,000.0	
2	Over at least 8" of growth medium			
enter sq ft	4,200	0.8	3,360.0	
H	Bonuses			
1	Native plant species			
enter sq ft	2,181	0.1	218.1	

* Permeable paving and structural soil together may not qualify for more than one third of the Green Area Ratio score.
Total square footage of all permeable paving and enhanced tree growth

POST HEARING SUBMISSION

PROJECT N° 20110015 / 03862-001 ISSUE DATE: 02.11.2015

PUD 369 SUBMISSION

GREEN AREA RATIO DIAGRAM

COLUMBIA PLACE - BLOCK 369
Square 369, Washington, DC

Scale: 1" = 30'-0"
0 10' 20' 30' NORTH

© 2014 Cooper Carry, Inc., 191 Peachtree Street NE, Suite 2400, Atlanta, Georgia 30303 Tel. 404-237-2000 Fax 404-237-0276

STUDIO39

PUD 369

L1.09