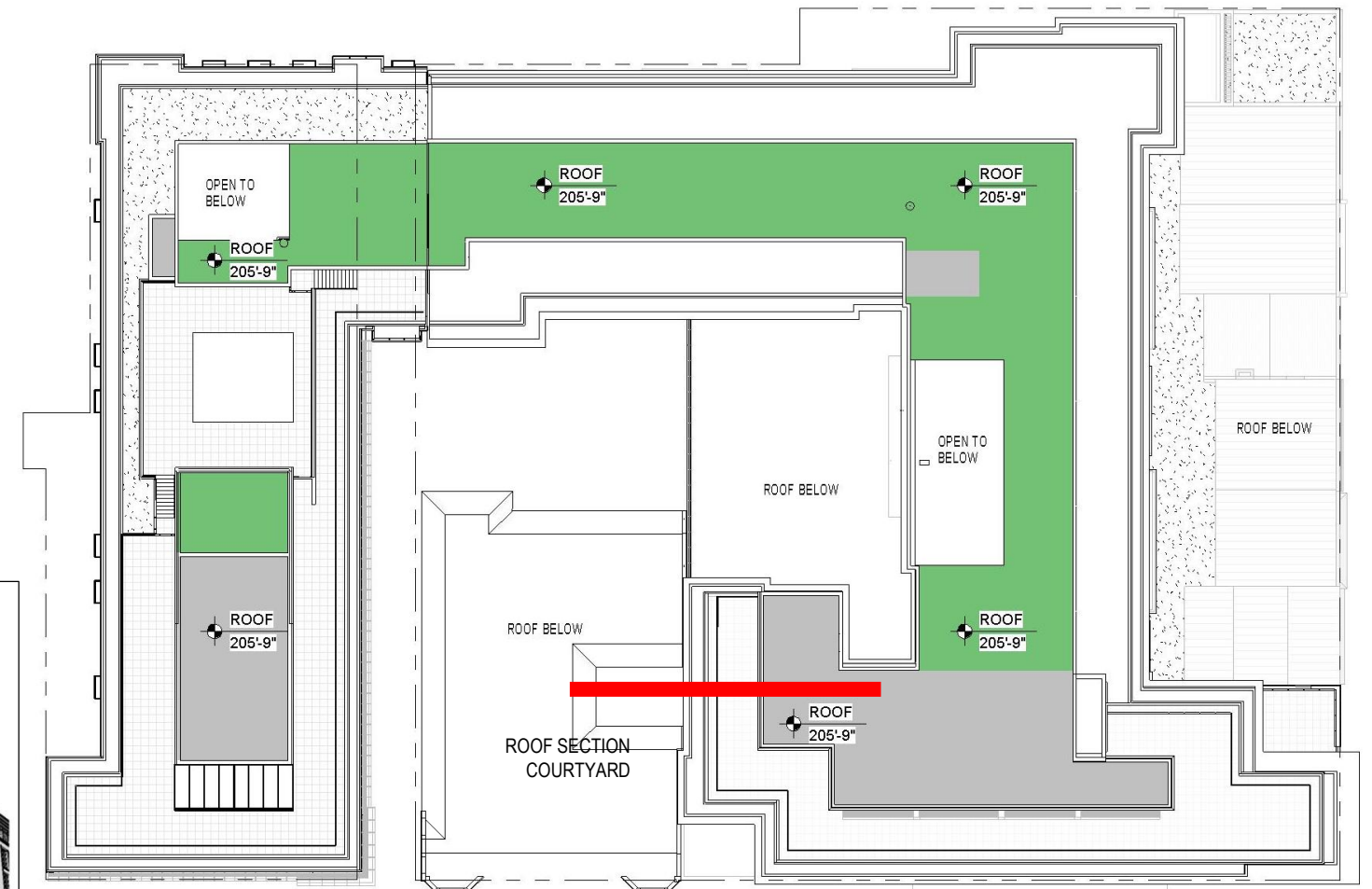


As submitted 1-29-15



As submitted 2-12-15



VIEW FROM SOUTH
SIDEWALK AT DCMM

ROOF PLAN
As submitted 2-12-15

View from DCMM showing
set back at Interior court over
Lurgan building

POST-HEARING SUBMISSION

PROJECT N° 20110015 / 03862-001

ISSUE DATE: 02.12.2015

PUD 369 SUBMISSION
POST-HEARING SUBMISSION

© 2014 Cooper Carry, Inc., 191 Peachtree Street NE, Suite 2400, Atlanta, Georgia 30303 Tel. 404-237-2000 Fax 404-237-0276

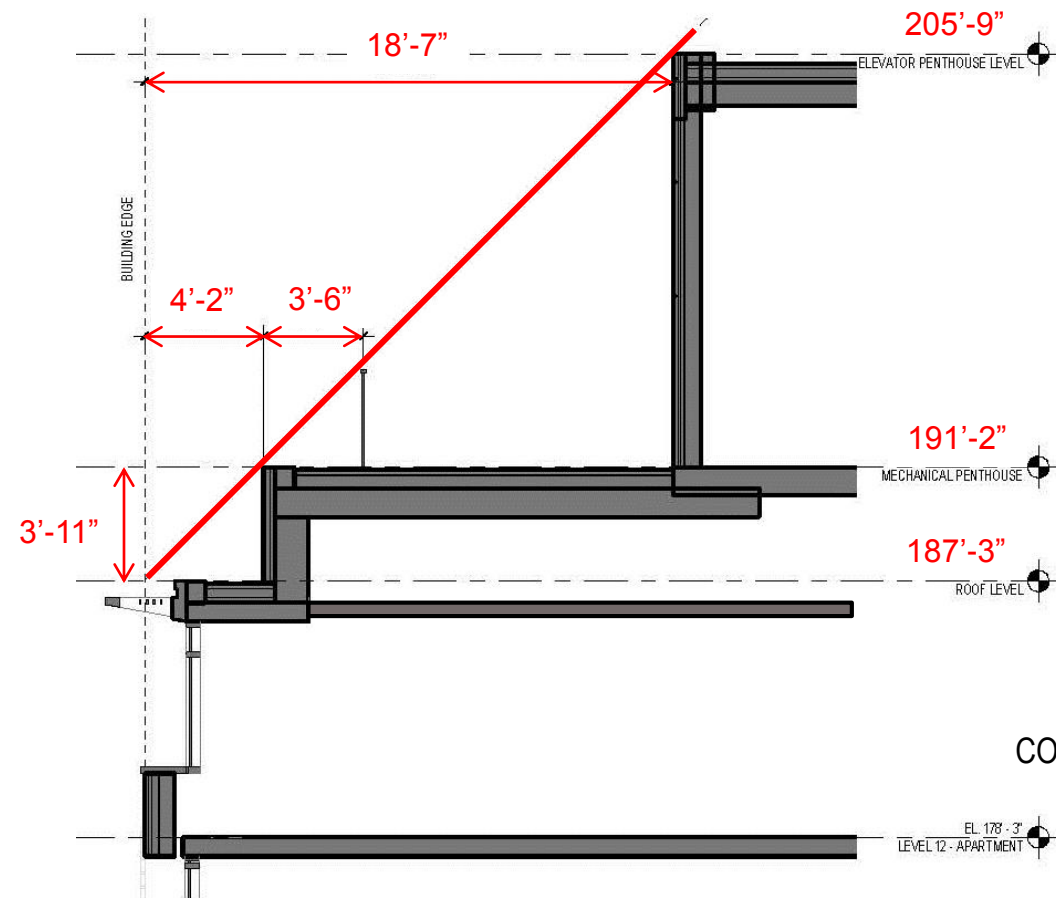
ROOF SETBACK COURTYARD

COLUMBIA PLACE - BLOCK 369
Square 369, Washington, DC

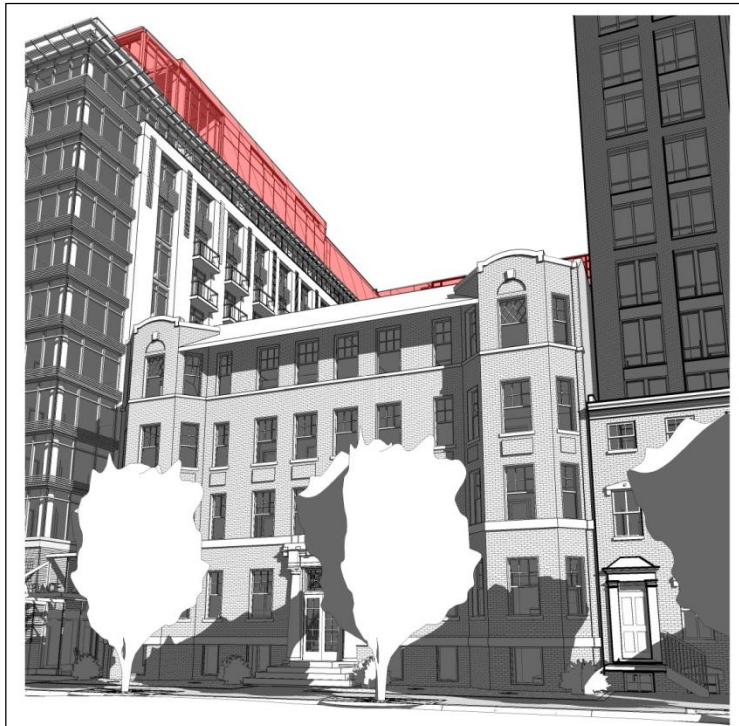
COOPER CARRY
tvdsdesign

PUD 369

ZONING COMMISSION
District of Columbia
CASE NO. 14-05
EXHIBIT NO. 63A2
A221



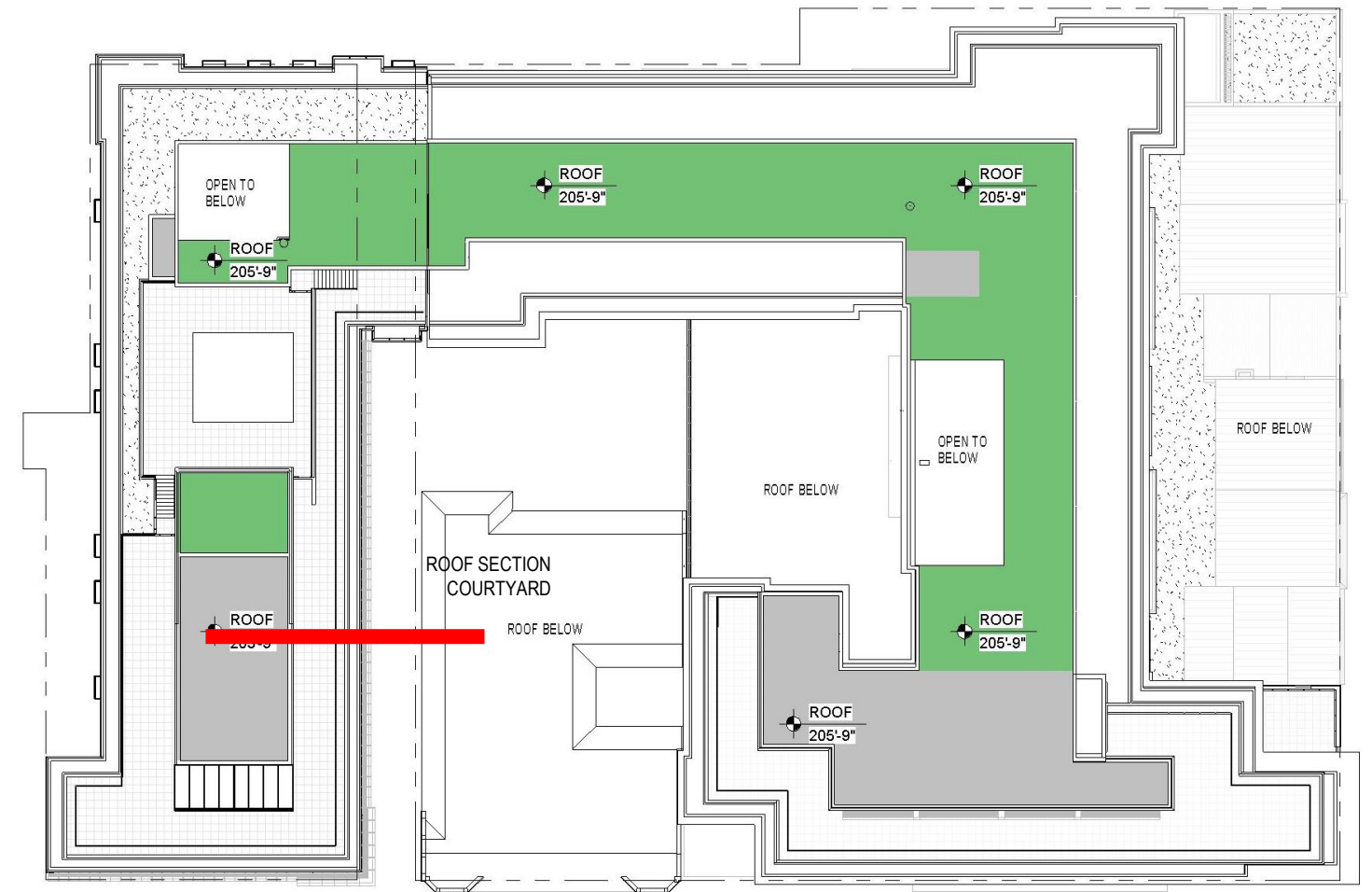
ROOF SECTION
COURTYARD 2-12-15



As submitted 1-29-15



As submitted 2-12-15



ROOF PLAN
As submitted 2-12-15

VIEW FROM SOUTH
SIDEWALK AT DCMM

View from DCMM showing
set back at Interior court over
Lurgan building

POST-HEARING SUBMISSION

PROJECT N° 20110015 / 03862-001

ISSUE DATE: 02.12.2015

PUD 369 SUBMISSION
POST-HEARING SUBMISSION

© 2014 Cooper Carry, Inc., 191 Peachtree Street NE, Suite 2400, Atlanta, Georgia 30303 Tel. 404-237-2000 Fax 404-237-0276

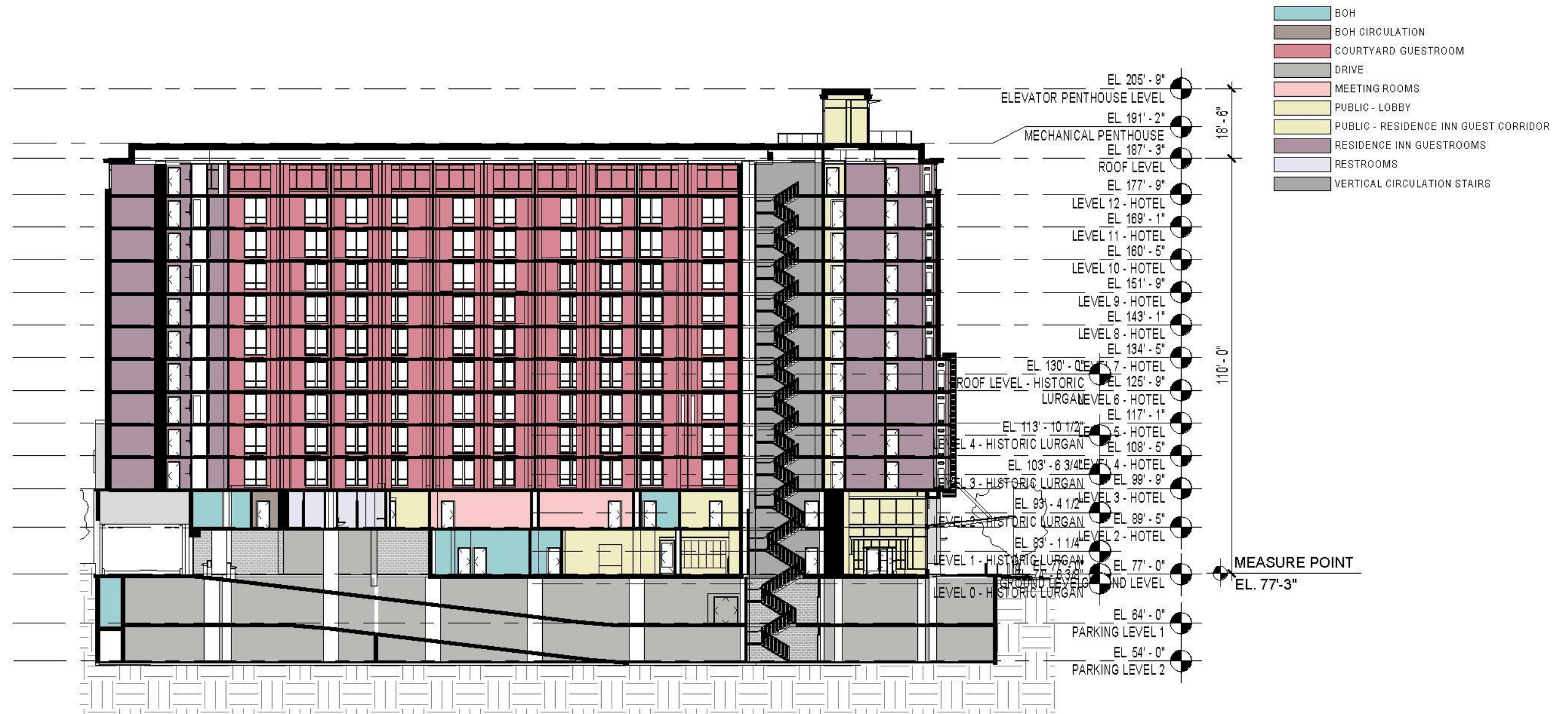
ROOF SETBACK COURTYARD

COLUMBIA PLACE - BLOCK 369
Square 369, Washington, DC

COOPER CARRY
tvdesign

PUD 369

A-222



Building Section showing:
Set back at L, 9th Street

POST-HEARING SUBMISSION

PROJECT N° 20110015 / 03862-001

ISSUE DATE: 02.12.2015

NORTH-SOUTH BUILDING SECTION THROUGH HOTEL

COLUMBIA PLACE - BLOCK 369
Square 369, Washington, DC

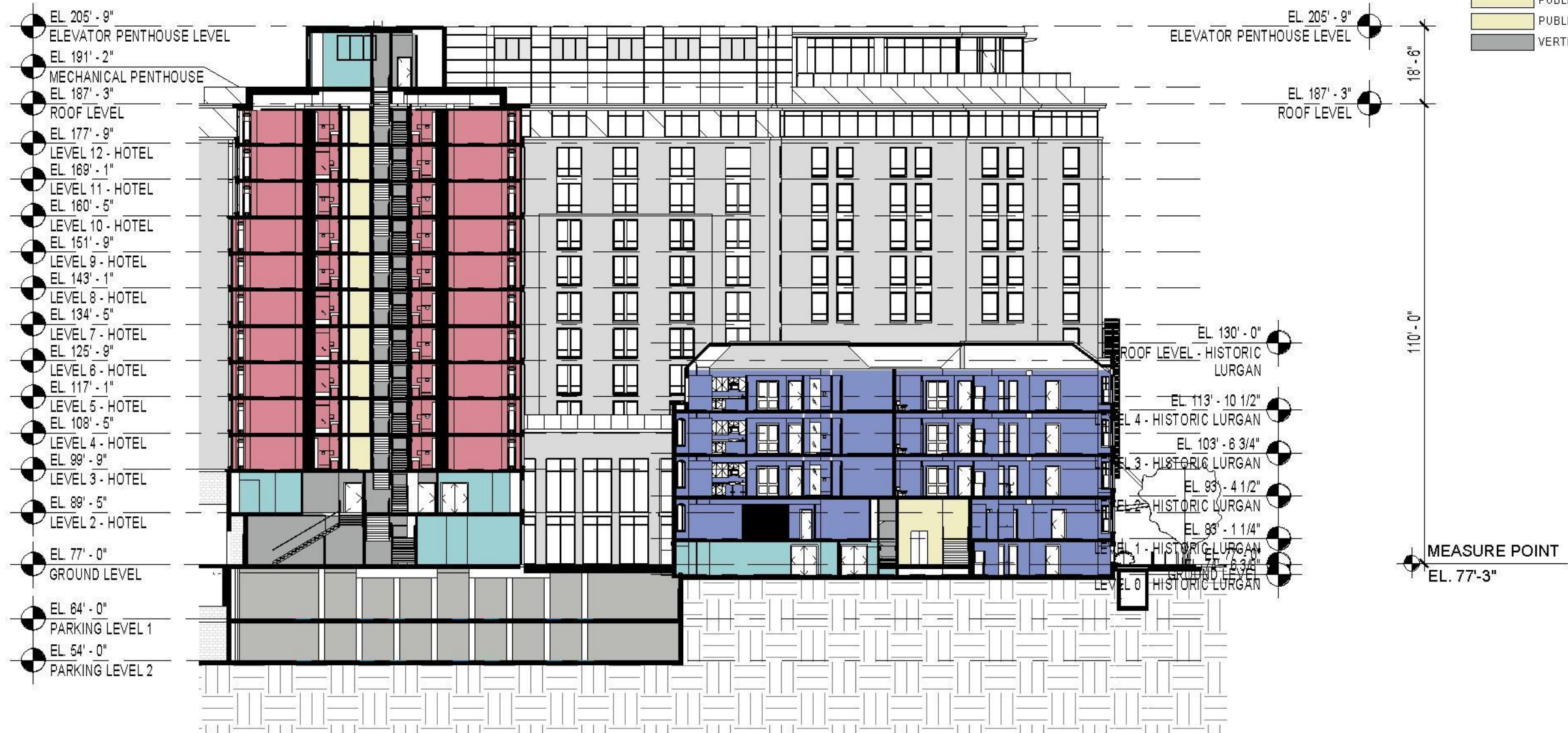
PUD 369 SUBMISSION
POST-HEARING SUBMISSION

© 2014 Cooper Carry, Inc., 191 Peachtree Street NE, Suite 2400, Atlanta, Georgia 30303 Tel. 404-237-2000 Fax 404-237-0276

COOPER CARRY
tvdsdesign

PUD 369

A-301



Building Section showing:
Set back at Alley and interior court

POST-HEARING SUBMISSION

PROJECT N° 20110015 / 03862-001

ISSUE DATE: 02.12.2015

NORTH-SOUTH BUILDING SECTION THROUGH HISTORIC APARTMENT BUILDING

PUD 369 SUBMISSION
POST-HEARING SUBMISSION

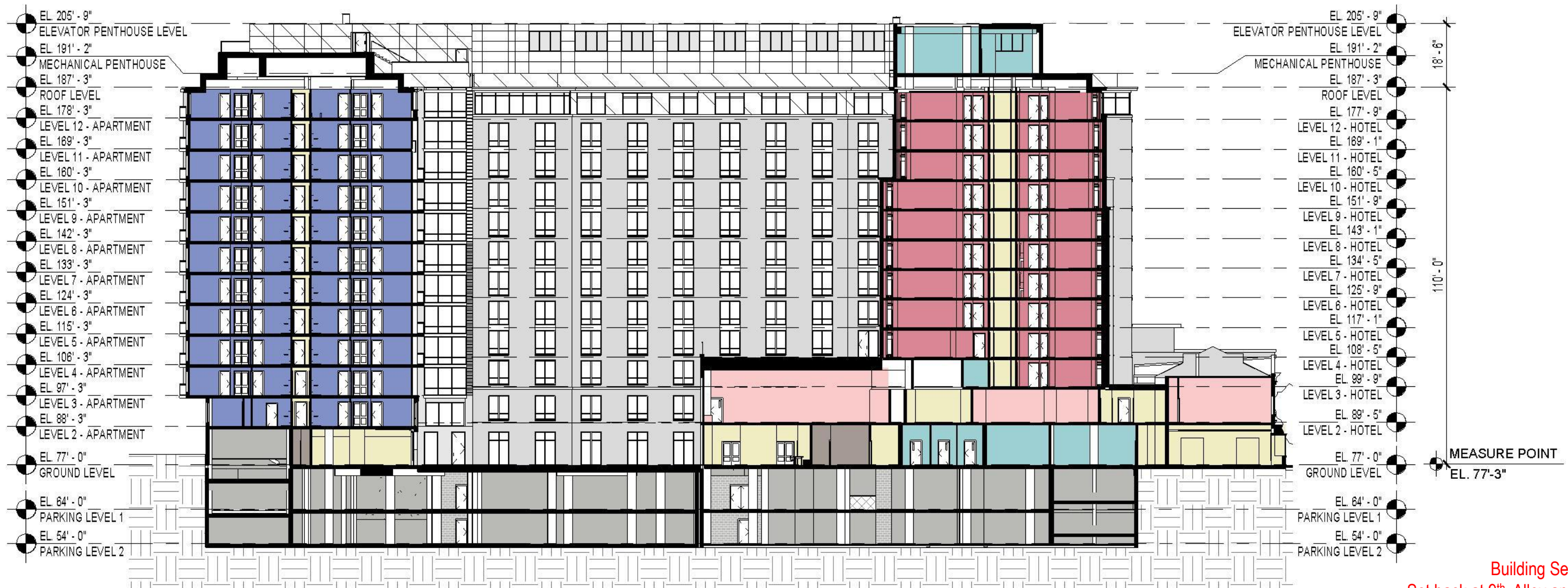
COLUMBIA PLACE - BLOCK 369
Square 369, Washington, DC

© 2014 Cooper Carry, Inc., 191 Peachtree Street NE, Suite 2400, Atlanta, Georgia 30303 Tel. 404-237-2000 Fax 404-237-0276

COOPER CARRY
tvdsdesign

PUD 369
A-302

- APARTMENTS - 1 BEDROOM UNITS
- APARTMENTS - STUDIO UNITS
- BOH
- BOH CIRCULATION
- COURTYARD GUESTROOM
- DRIVE
- MEETING ROOMS
- PUBLIC - APARTMENTS UNITS CORRIDOR
- PUBLIC - COURTYARD GUEST CORRIDOR
- PUBLIC - DINING/BAR
- PUBLIC - LOBBY



Building Section showing:
Set back at 9th, Alley and interior court

POST-HEARING SUBMISSION

PROJECT N° 20110015 / 03862-001 ISSUE DATE: 02.12.2015

PUD 369 SUBMISSION
POST-HEARING SUBMISSION

© 2014 Cooper Carry, Inc., 191 Peachtree Street NE, Suite 2400, Atlanta, Georgia 30303 Tel. 404-237-2000 Fax 404-237-0276

EAST-WEST BUILDING SECTION

COLUMBIA PLACE - BLOCK 369
Square 369, Washington, DC

COOPER CARRY
tvdsdesign

PUD 369
A-303



SOUTH ELEVATION- L STREET



EAST ELEVATION- 9TH STREET

Elevation showing:
Set back at L, 9th and Interior court

POST-HEARING SUBMISSION

PROJECT N° 20110015 / 03862-001

ISSUE DATE: 02.12.2015

L STREET & 9TH STREET ELEVATIONS

PUD 369 SUBMISSION

POST-HEARING SUBMISSION

COLUMBIA PLACE - BLOCK 369
Square 369, Washington, DC

© 2014 Cooper Carry, Inc., 191 Peachtree Street NE, Suite 2400, Atlanta, Georgia 30303 Tel. 404-237-2000 Fax 404-237-0276



COOPER CARRY

tvsvdesign

PUD 369

A-401



Elevation showing:
Set back at L, 9th and Interior court

POST-HEARING SUBMISSION

PROJECT N° 20110015 / 03862-001

ISSUE DATE: 02.12.2015

SOUTH (L STREET) ELEVATION

PUD 369 SUBMISSION

POST-HEARING SUBMISSION

COLUMBIA PLACE - BLOCK 369
Square 369, Washington, DC

© 2014 Cooper Carry, Inc., 191 Peachtree Street NE, Suite 2400, Atlanta, Georgia 30303 Tel. 404-237-2000 Fax 404-237-0276

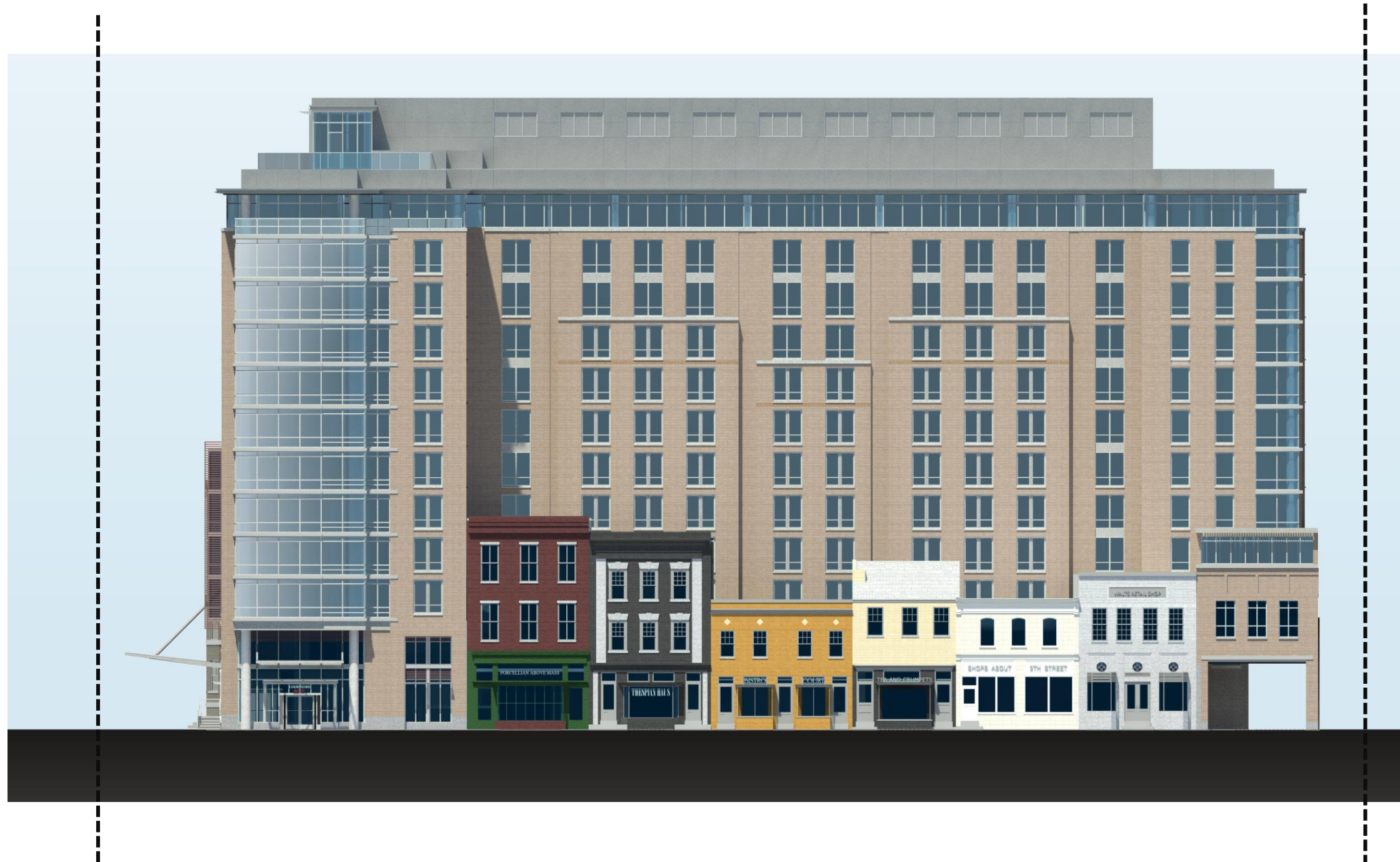


COOPER CARRY

tvdesign

PUD 369

A-402



Elevation showing:
Set back at L, 9th and Alley

POST-HEARING SUBMISSION

PROJECT N° 20110015 / 03862-001 ISSUE DATE: 02.12.2015

EAST (9th STREET) ELEVATION

PUD 369 SUBMISSION
POST-HEARING SUBMISSION

COLUMBIA PLACE - BLOCK 369
Square 369, Washington, DC

© 2014 Cooper Carry, Inc., 191 Peachtree Street NE, Suite 2400, Atlanta, Georgia 30303 Tel. 404-237-2000 Fax 404-237-0276



COOPER CARRY
tvsvdesign

PUD 369

A-403



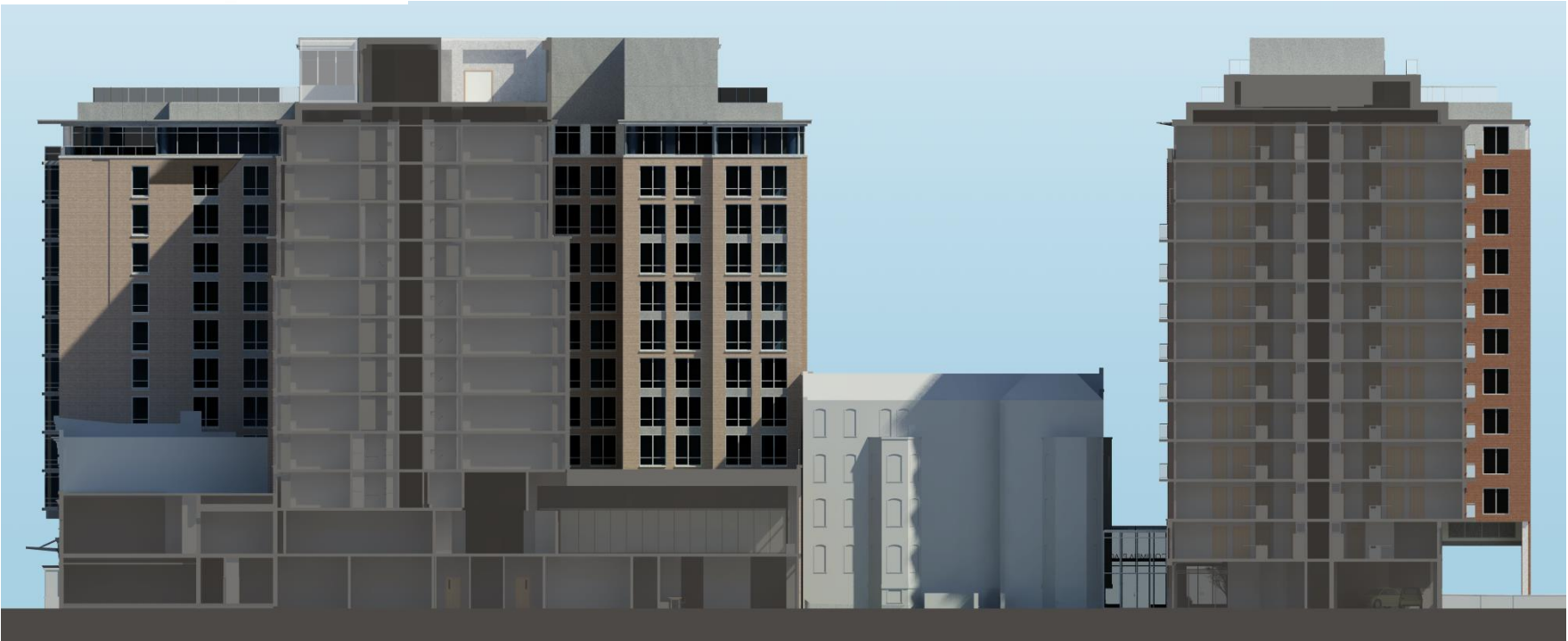
1 - EAST COURTYARD ELEVATION



2 - SOUTH COURTYARD ELEVATION



3 - WEST COURTYARD ELEVATION



4 - NORTH COURTYARD ELEVATION

Elevation showing:
Set back at Alleys, L, 9th, Interior Court

POST-HEARING SUBMISSION

PROJECT N° 20110015 / 03862-001 ISSUE DATE: 02.12.2015

PUD 369 SUBMISSION
POST-HEARING SUBMISSION

© 2014 Cooper Carry, Inc., 191 Peachtree Street NE, Suite 2400, Atlanta, Georgia 30303 Tel. 404-237-2000 Fax 404-237-0276

COLUMBIA PLACE - BLOCK 369
Square 369, Washington, DC


COOPER CARRY
tvdesign

PUD 369



Setback at L, 9th, and Interior
Court; Darker Penthouse

POST-HEARING SUBMISSION

PROJECT N° 20110015 / 03862-001

ISSUE DATE: 02.12.2015

RENDERING- AERIAL OF L & 9TH

COLUMBIA PLACE - BLOCK 369
Square 369, Washington, DC

PUD 369 SUBMISSION
POST-HEARING SUBMISSION

© 2014 Cooper Carry, Inc., 191 Peachtree Street NE, Suite 2400, Atlanta, Georgia 30303 Tel. 404-237-2000 Fax 404-237-0276



COOPER CARRY
tvdesign

PUD 369

A-501