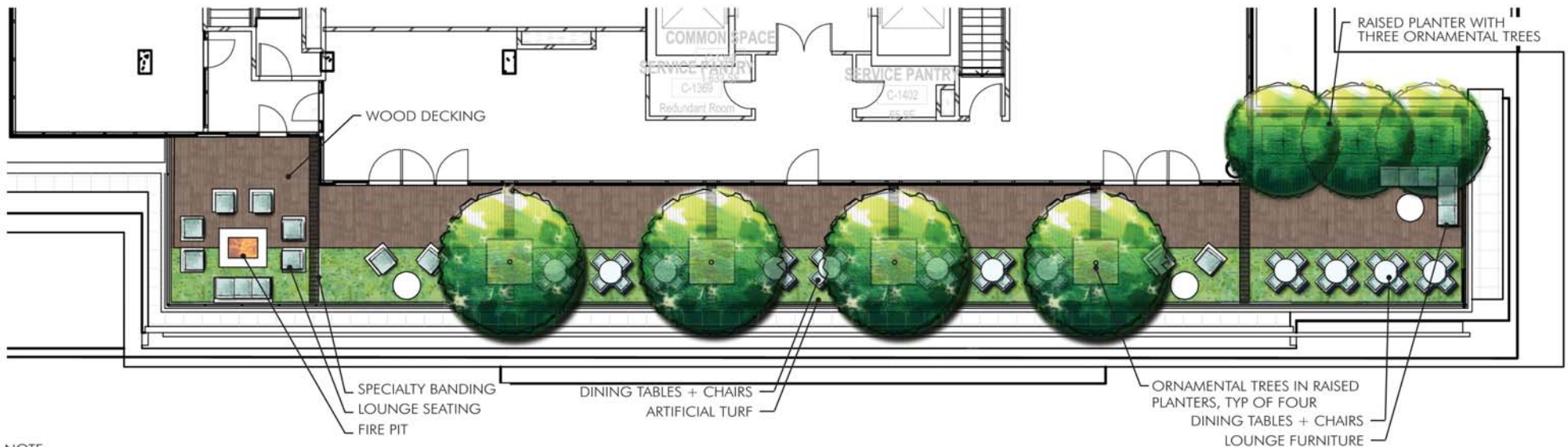






SEATING NOOK CHAIRS



NOTE:
PLANT SPECIES SELECTIONS IDENTIFIED ON THIS PLAN ARE SHOWN TO ILLUSTRATE DESIGN INTENT AT MATURITY ONLY. THE PURPOSE IS TO GENERALLY DEFINE PLANT SIZE, CHARACTER AND LOCATION. REFINEMENT TO THE PLANTING DESIGN AND FINAL SELECTION OF ALL PLANT MATERIALS CONSISTENT WITH THE SPECIES SHOWN SHALL BE DEVELOPED DURING DETAILED DESIGN PHASE OF THE WORK. SHADE TREES SHALL BE INSTALLED AT 2-1/2"-3" CALIPER MIN. AND ORNAMENTAL TREES SHALL BE INSTALLED AT 1-1/2"-2" CALIPER.

PRE-HEARING SUBMISSION

PROJECT N° 20110015 / 03862-001

ISSUE DATE: 01.28.2015

HOTEL ROOF DECK ENLARGEMENT

COLUMBIA PLACE - BLOCK 369

Square 369, Washington, DC

Scale: 3/32" = 1'-0"

0 2.5' 5' 12' NORTH

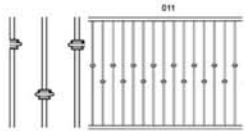
PUD 369 SUBMISSION

© 2014 Cooper Carry, Inc., 191 Peachtree Street NE, Suite 2400, Atlanta, Georgia 30303 Tel. 404-237-2000 Fax 404-237-0276



PUD 369

L1.06



PICKET FENCING



STREETSCAPE TRASH RECEPTACLE



STREETSCAPE BOLLARDS



STAINLESS STEEL STRIPS



PAVER ACCENT LIGHTS



STREETSCAPE "U" BIKE RACK



GRANITE PAVER PLANKS



GRANITE SETTS



PATTERN: BASKET WEAVE
COLOR: RED
(9TH STREET N.W.)



PATTERN: HERRINGBONE
COLOR: RED
(VEHICULAR ACCESS DRIVES)



PATTERN: RUNNING BOND
COLOR: RED
(L STREET N.W.)



DOUBLE WASHINGTON GLOBE-
EXISTING TO REMAIN
(9TH STREET N.W.)



PENDANT STYLE WASHINGTON GLOBE-
TO REPLACE EXISTING COBRA FIXTURE
(L STREET N.W.)
NOTE: SUBSTITUTION REQUIRES
DDOT REVIEW AND APPROVAL



TREE GRATE

NOTE:
PLANT SPECIES SELECTIONS IDENTIFIED ON THIS PLAN ARE SHOWN TO ILLUSTRATE DESIGN INTENT AT MATURITY ONLY. THE PURPOSE IS TO GENERALLY DEFINE PLANT SIZE, CHARACTER AND LOCATION. REFINEMENT TO THE PLANTING DESIGN AND FINAL SELECTION OF ALL PLANT MATERIALS CONSISTENT WITH THE SPECIES SHOWN SHALL BE DEVELOPED DURING DETAILED DESIGN PHASE OF THE WORK. SHADE TREES SHALL BE INSTALLED AT 2-1/2"-3" CALIPER MIN. AND ORNAMENTAL TREES SHALL BE INSTALLED AT 1-1/2"-2" CALIPER.

PRE-HEARING SUBMISSION

PROJECT N° 20110015 / 03862-001

ISSUE DATE: 01.28.2015

HARDSCAPE + STREETSCAPE ELEMENTS

PUD 369 SUBMISSION

COLUMBIA PLACE - BLOCK 369
Square 369, Washington, DC



STUDIO39

PUD 369

L1.07

© 2014 Cooper Carry, Inc., 191 Peachtree Street NE, Suite 2400, Atlanta, Georgia 30303 Tel. 404-237-2000 Fax 404-237-0276

Streetscape Trees



SCARLET OAK
Quercus coccinea
9th Street



LONDON PLANETREE
Platanus acerifolia
L Street

Ornamental Trees



WATERFALL JAPANESE MAPLE
Acer palatum "Waterfall"



NATCHEZ Crape Myrtle
Lagerstroemia indica "Natchez"

Green Roof



STIPA TENUISSIMA
Nasella tenuissima



SEDUM SPEC.



SEDUM SPEC.



SEDUM SPEC.

Shrubs



JAPANESE AUCUBA
Aucuba japonica
"Rozannie"



OSAKAZUKI AZALEA
Rhododendron
"Osakazuki"



WINTERGREEN BOXWOOD
Buxus microphylla

Perennials/Ornamental Grasses/ Ferns



FEATHER REED GRASS
Calamagrostis acutifolia "Karl
Foerster"



CREeping PHLOX
Phlox stolonifera "Sherwood
Purple"



HEAVY METAL SWITCH GRASS
Panicum virgatum "Heavy
Metal"



MOONBEAM COREOPSIS
Coreopsis verticula
"Moonbeam"



MONDO GRASS
Ophiopogon japonicus



DOROTHY WYCKOFF PIERIS
Peiris japonica "DOROTHY
WYCKOFF"



OTTO LUYKENS CHERRY
LAUREL
Prunus laurocerasus
"Otto Luykens"



GIRARD'S CRIMSON
AZALEA
Rhododendron "Girard's
Crimson"



CAROLINA YELLOW JESSAMINE
Gelsemium sempervirens



EVERGREEN CLEMATIS
Clematis armandii



PINK MUHLY GRASS
Muhlenbergia capillaris



LADY IN RED FERN
Athyrium filix-femina



OAKLEAF FOAM FLOWER
Tiarella cordifolia "Collina"

NOTE:
PLANT SPECIES SELECTIONS IDENTIFIED ON THIS PLAN ARE SHOWN TO ILLUSTRATE DESIGN INTENT AT MATURITY ONLY. THE PURPOSE IS TO GENERALLY DEFINE PLANT SIZE, CHARACTER AND LOCATION. REFINEMENT TO THE PLANTING DESIGN AND FINAL SELECTION OF ALL PLANT MATERIALS CONSISTENT WITH THE SPECIES SHOWN SHALL BE DEVELOPED DURING DETAILED DESIGN PHASE OF THE WORK. SHADE TREES SHALL BE INSTALLED AT 2-1/2"-3" CALIPER MIN. AND ORNAMENTAL TREES SHALL BE INSTALLED AT 1-1/2"-2" CALIPER.

PRE-HEARING SUBMISSION

PROJECT N° 20110015 / 03862-001

ISSUE DATE: 01.28.2015

PUD 369 SUBMISSION

PLANT SCHEDULE

COLUMBIA PLACE - BLOCK 369
Square 369, Washington, DC



STUDIO39

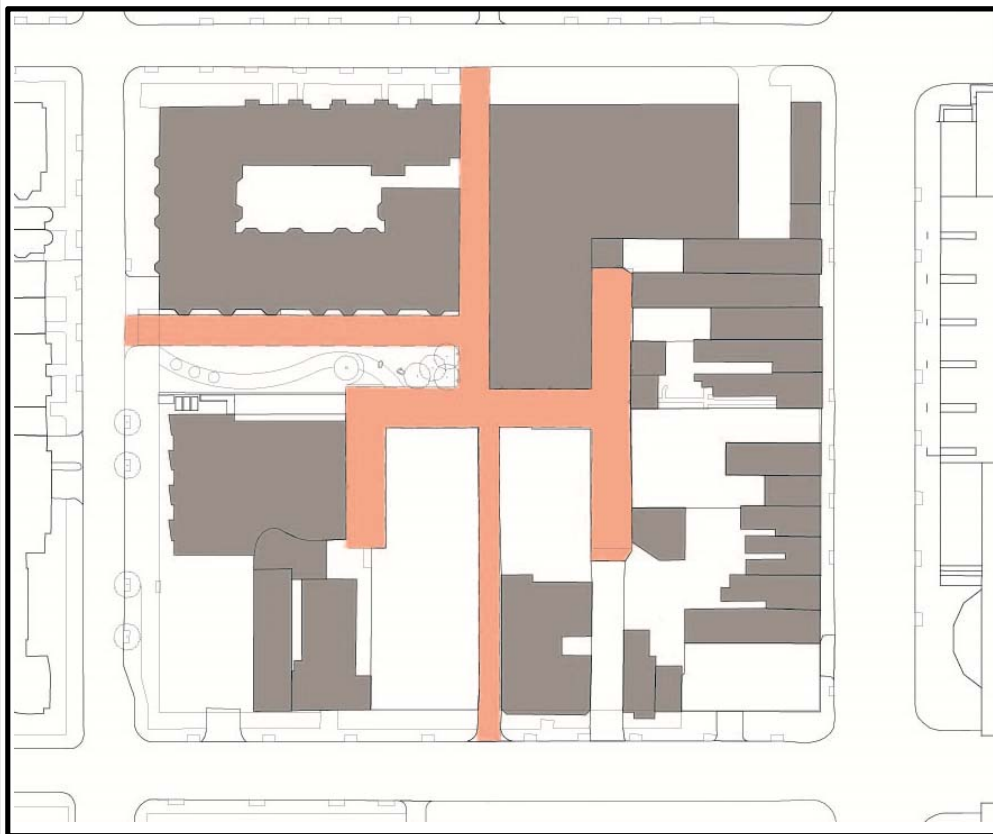
PUD 369

L1.08



LOT AREA: 70,780 SF
 ZONE: C-3-C (REQUIRED G.A.R. = 0.20)
 HISTORIC FOOTPRINT CONTRIBUTION: 14,873 SF
 G.A.R. LOT AREA: 55,907 SF
 VEGETATED "GREEN ROOFS"
 2"-8" GROWTH MEDIUM: 10,000 SF
 VEGETATED "GREEN ROOFS"
 OVER 8" GROWTH MEDIUM: 4,200 SF
 DESIGN G.A.R. = 0.226

Green Area Ratio Score Sheet			
Point	sq ft	Score	Points Score
1.0			
1.0			
1.0			
1.0			
1.0			
1.0			
1.0			
1.0			
1.0			
1.0			
1.0			
1.0			
1.0			
1.0			
1.0			
1.0			
1.0			
1.0			
1.0			
1.0			
1.0			
1.0			
1.0			
1.0			
1.0			
1.0			
1.0			
1.0			
1.0			
1.0			
1.0			
1.0			
1.0			
1.0			
1.0			
1.0			
1.0			
1.0			
1.0			
1.0			
1.0			
1.0			
1.0			
1.0			
1.0			
1.0			
1.0			
1.0			
1.0			
1.0			
1.0			
1.0			
1.0			
1.0			
1.0			
1.0			
1.0			
1.0			
1.0			
1.0			
1.0			
1.0			
1.0			
1.0			
1.0			
1.0			
1.0			
1.0			
1.0			
1.0			
1.0			
1.0			
1.0			
1.0			
1.0			
1.0			
1.0			
1.0			
1.0			
1.0			
1.0			
1.0			
1.0			
1.0			
1.0			
1.0			
1.0			
1.0			
1.0			
1.0			
1.0			
1.0			
1.0			
1.0			
1.0			
1.0			
1.0			
1.0			
1.0			
1.0			
1.0			
1.0			
1.0			
1.0			
1.0			
1.0			
1.0			
1.0			
1.0			
1.0			
1.0			
1.0			
1.0			
1.0			
1.0			
1.0			
1.0			
1.0			
1.0			
1.0			
1.0			
1.0			
1.0			
1.0			
1.0			
1.0			
1.0			
1.0			
1.0			
1.0			
1.0			
1.0			
1.0			
1.0			
1.0			
1.0			
1.0			
1.0			
1.0			
1.0			
1.0			
1.0			
1.0			
1.0			
1.0			
1.0			
1.0			
1.0			
1.0			
1.0			
1.0			
1.0			
1.0			
1.0			
1.0			
1.0			
1.0			
1.0			
1.0			
1.0			
1.0			
1.0			
1.0			
1.0			
1.0			
1.0			
1.0			
1.0			
1.0			
1.0			
1.0			
1.0			
1.0			
1.0			
1.0			
1.0			
1.0			
1.0			
1.0			
1.0			
1.0			
1.0			
1.0			
1.0			
1.0			
1.0			
1.0			
1.0			
1.0			
1.0			
1.0			
1.0			
1.0			
1.0			
1.0			
1.0			
1.0			
1.0			
1.0			
1.0			
1.0			
1.0			
1.0			
1.0			
1.0			
1.0			
1.0			
1.0			
1.0			
1.0			
1.0			
1.0			
1.0			
1.0			
1.0			
1.0			
1.0			
1.0			
1.0			
1.0			
1.0			
1.0			
1.0			
1.0			
1.0			
1.0			
1.0			
1.0			
1.0			
1.0			
1.0			
1.0			
1.0			
1.0			
1.0			
1.0			
1.0			
1.0			
1.0			
1.0			
1.0			
1.0			
1.0			
1.0			
1.0			
1.0			
1.0			
1.0			
1.0			
1.0			
1.0			
1.0			
1.0			
1.0			
1.0			



Existing site: Alleys



Proposed site: Alleys

PRE-HEARING SUBMISSION

PROJECT N° 20110015 / 03862-001

ISSUE DATE: 01.29.2015

PUD 369 SUBMISSION

Existing site: Alleys

COLUMBIA PLACE - BLOCK 369
Square 369, Washington, DC

© 2014 Cooper Carry, Inc., 191 Peachtree Street NE, Suite 2400, Atlanta, Georgia 30303 Tel. 404-237-2000 Fax 404-237-0276



COOPER CARRY

tvsvdesign

PUD 369

A-010



Proposed Alley: Ground Level to 15'-0"

PRE-HEARING SUBMISSION

PROJECT N° 20110015 / 03862-001 ISSUE DATE: 01.29.2015

PUD 369 SUBMISSION

Proposed site: Alleys

COLUMBIA PLACE - BLOCK 369
Square 369, Washington, DC

© 2014 Cooper Carry, Inc., 191 Peachtree Street NE, Suite 2400, Atlanta, Georgia 30303 Tel. 404-237-2000 Fax 404-237-0276

COOPER CARRY
tvdesign

PUD 369

A-010a

Columbia Place PUD Transportation Overview



GOROVE / SLADE

Transportation Planners and Engineers

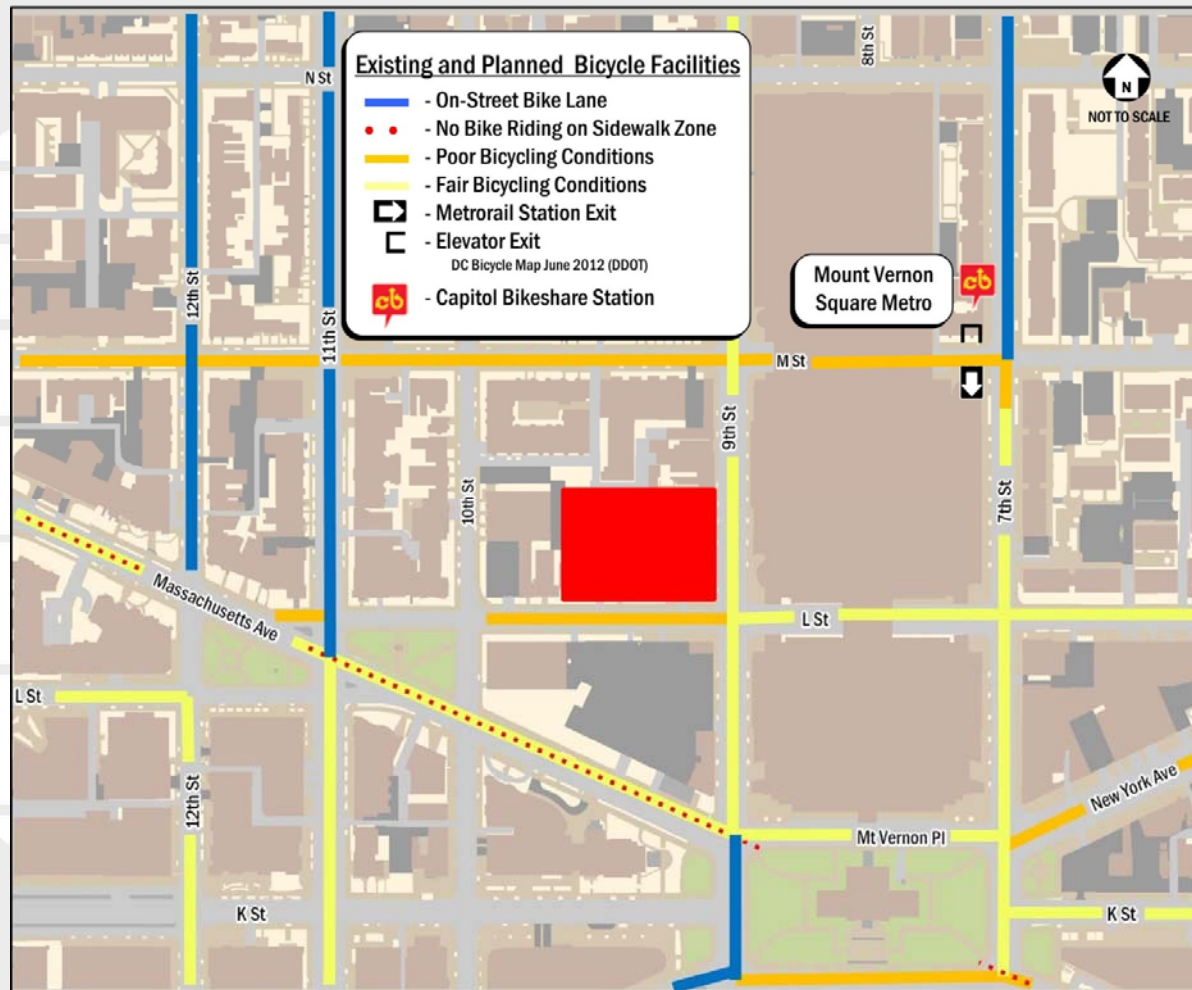
Existing Transit Service

- Development Site
- WMATA Bus Route
- Transit Stop
- Transit Stop With Shelter
- Metro Extra Transit Stop
- Metrorail Station

Map details: The map shows a street grid in Mount Vernon Square. A red rectangle indicates the development site, located between 10th St and 11th St, and between Massachusetts Ave and L St. Blue lines represent bus routes 64, G8, 79, and 70. A Metrorail station is located at Mount Vernon Square. Various transit stops are marked with blue and green dots. A north arrow and 'NOT TO SCALE' text are in the top left corner.



Existing Bicycle Facilities



TDM Elements

- TDM plan includes:
 - The Applicant will provide an adequate amount of short-and long-term bicycle parking spaces, including a secure bicycle room within the building that can house up to 67 bicycles.
 - The TDM Leader will make printed materials related to local transportation alternatives available to residents and employees upon request and at move-in for new tenants.
 - The Applicant will dedicate one space on site for car sharing services to use with right of first refusal.



DDOT Conditions

- **Applicant agrees to all of the DDOT Conditions:**
 - Install a minimum of 67 long-term and 10 short-term bicycle spaces for the residential building
 - Install a minimum of 15 long-term and 6 short-term bicycle spaces for the hotel and retail uses
 - Install a TransitScreen in each residential and hotel lobby
 - Become a Hotel Partner or Corporate Member of Capital Bikeshare
 - Provide a one-time Capital Bikeshare or cashare membership at initial lease and/or sale of each residential unit
 - Unbundle parking costs from the price of all commercial and residential leases
 - Provide shower and changing facilities for hotel staff





PRE-HEARING SUBMISSION

PROJECT N° 20110015 / 03862-001

ISSUE DATE: 01.29.2015

RENDERING-CORNER OF L & 9TH

COLUMBIA PLACE - BLOCK 369
Square 369, Washington, DC



PUD 369

A-504

PUD 369 SUBMISSION

© 2014 Cooper Carry, Inc., 191 Peachtree Street NE, Suite 2400, Atlanta, Georgia 30303 Tel. 404-237-2000 Fax 404-237-0276