

ZONING COMMISSION
 District of Columbia
 CASE NO.13-14
 EXHIBIT NO.501





Crataegus viridis 'Winter King'



3/32" = 1'

0' 5'-4" 10'-8" 21'-4"





Echinacea sp.



Yarrow sp.



Agastache sp.



Baptisia australis



Allium sp.



Solidago graminifolia / Goldenrod



Nepeta sp.



Asclepias tuberosa



Thymus sp.



Pycnanthemum muticum



Eryngium yuccifolium



Ruta graveolens





Hypericum calycinum



Asarum canadense



Xanthoriza simplicima



Actaea racemosa



Helleborus sp.



Geranium maculatum



Sanguinaria canadensis



Osmunda cinnamomea



Pulmonaria longifolia



Aquilegia canadensis

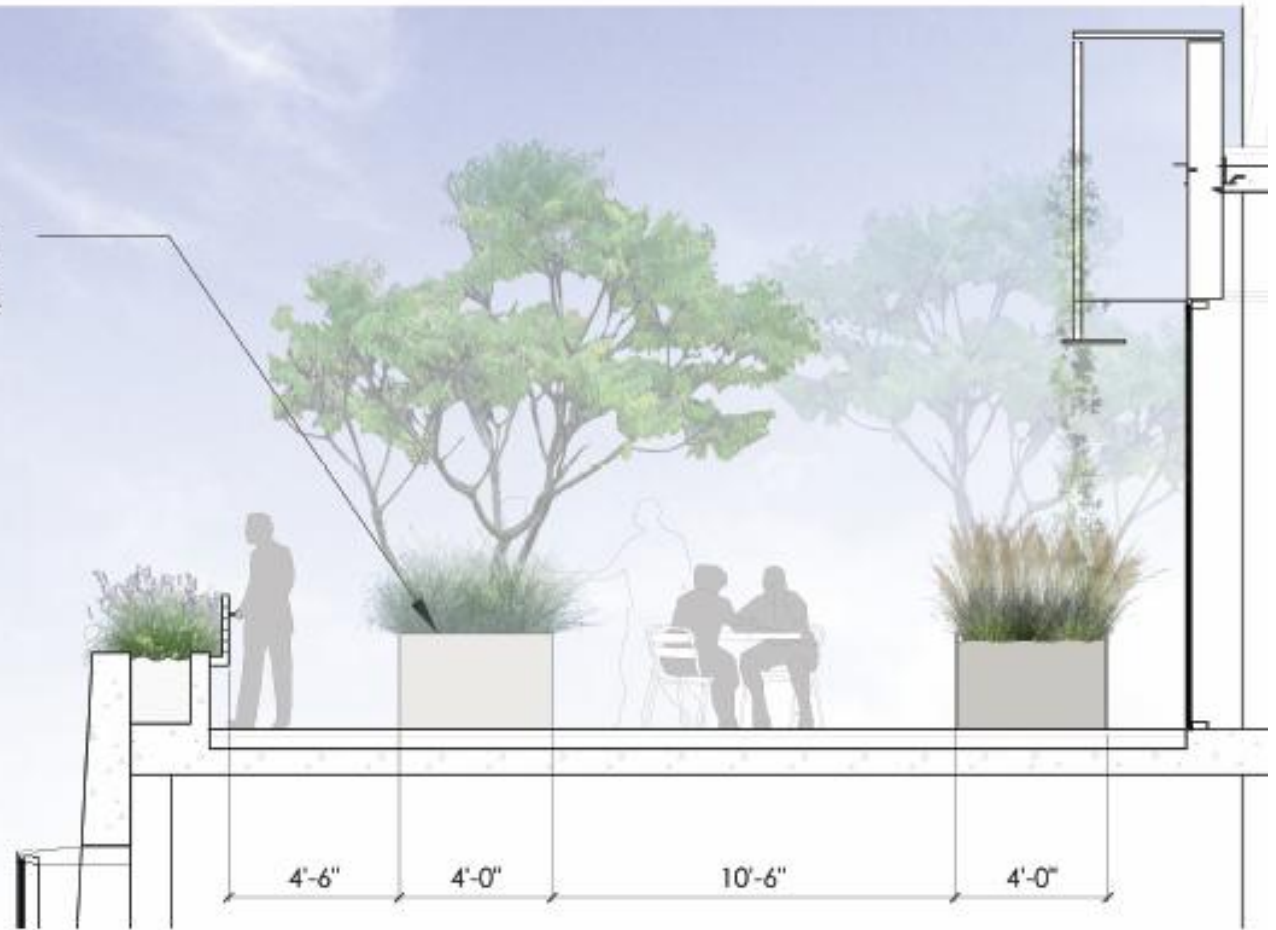


Hamamelis sp.



Polystichum acrostichoides

STAGGERED PLANTERS 3'-4"W X 10'L X 30"D,
PLANTED WITH A MIX OF SUMAC
AND NATIVE GRASSES



Terrace Section



Rhus copallina



Liatris spicata 'Alba'



Sporobolus heterolepis



Muhlenbergia 'White Cloud'



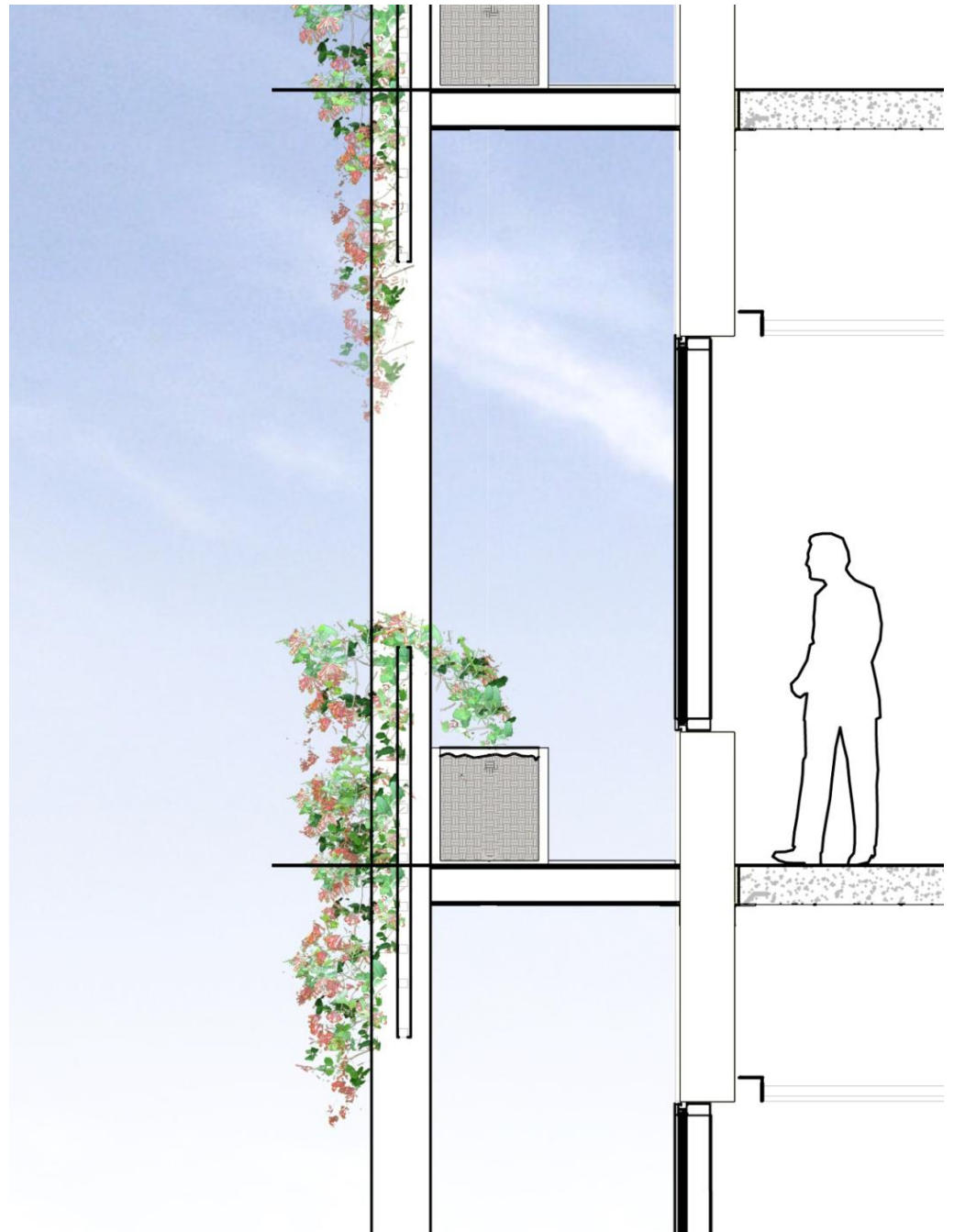
Gelsemium sempervirens



Lonicera sempervirens



Bignonia capreolata



KEY PROJECT BENEFIT – JOB CREATION



PARKS & PRESERVATION

- 9+ acres of public open space (13.55 acres of overall open space)
- Preservation and re-use of silos, regulator houses, sand washers and multiple filter cells
- Integration of community center with Cell No. 20

AFFORDABLE HOUSING

- 20% of housing units - affordable or senior affordable
- Additional 34% of housing units – workforce

CBE OWNER/DEVELOPER

- All multi-family parcels being developed by JLDP (100% CBE developer)

ECONOMIC DEVELOPMENT

of healthcare and health-related industries

WORKFORCE DEVELOPMENT

- 3,200 permanent + 3,000 construction jobs
- Healthcare component creates unique workforce development opportunities
- Partnerships w/Children's National, Trinity, Providence Health Foundation, Community Foundation, and more

WORKFORCE DEVELOPMENT OPPORTUNITY

	Labor Force	Employment	Unemployment	Unemployment Rate
Ward 5	41,990	36,991	4,999	11.9%

Source: DOES Office of Labor Market Research and Information – March 2014 Estimates

- District residents need **IMMEDIATE** workforce development opportunities
- Partnership approach between public sector, private sector & non-profit **PARTNERS**
- Healthcare component provides a **BROAD RANGE** of career opportunities



Entry Level

- Education:
 - High School /GED + CPR
- Job:
 - Patient Transport
- Wages:
 - \$10/hr



Middle Skill

- Education:
 - High School /GED + Cert.
- Job:
 - Radiology Film Clerk
- Wages:
 - \$15/hr



Advanced

- Education:
 - 4-yr degree
- Job:
 - Pharmacist
- Wages:
 - \$50/hr

WHO WE ASKED



WHAT THEY SUGGEST

- Taking full advantage of the job creation at McMillan will require **COORDINATION AND COOPERATION** with:
 - Talent providers
 - Employers
 - Community



Employers



Community