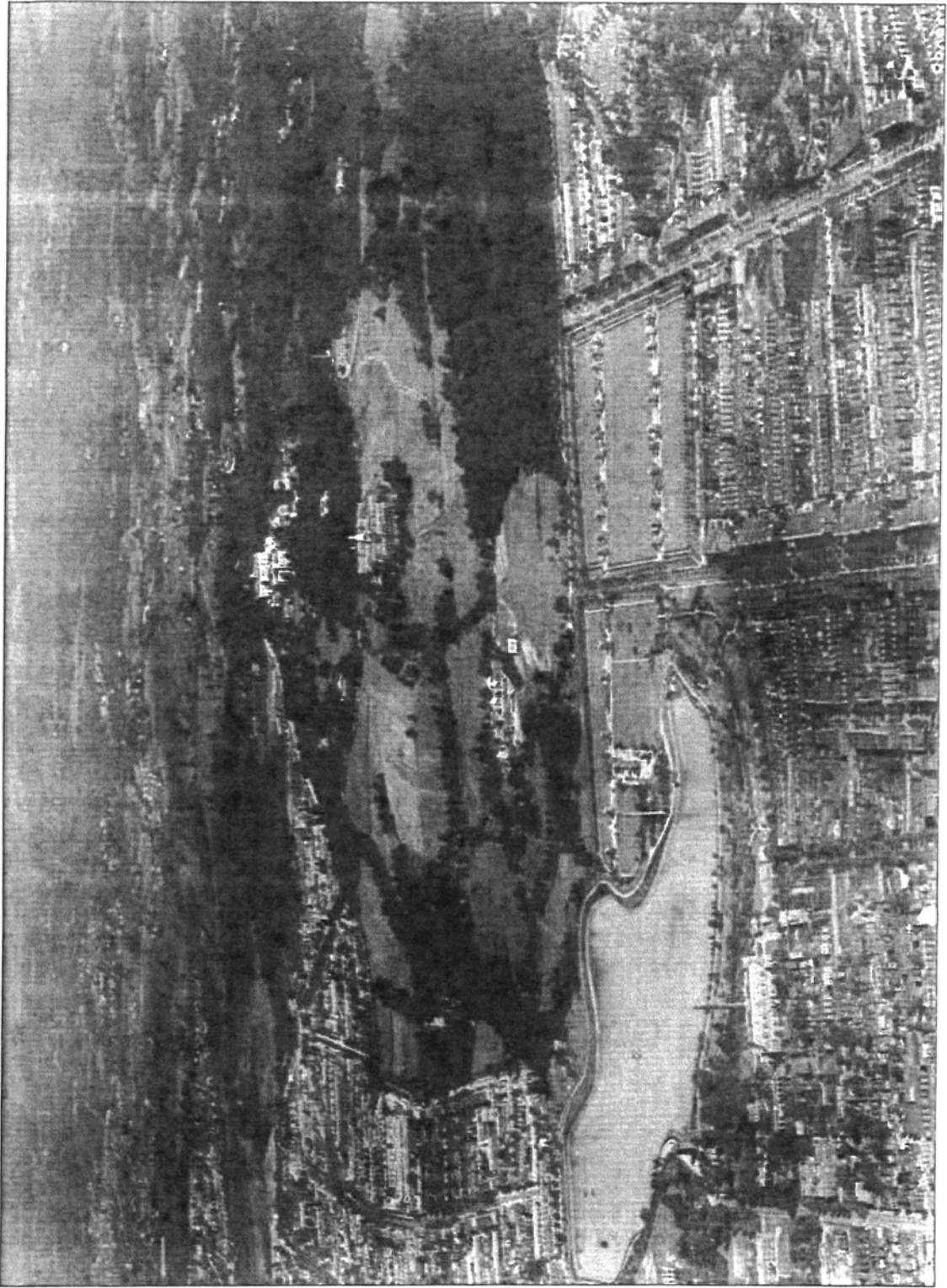
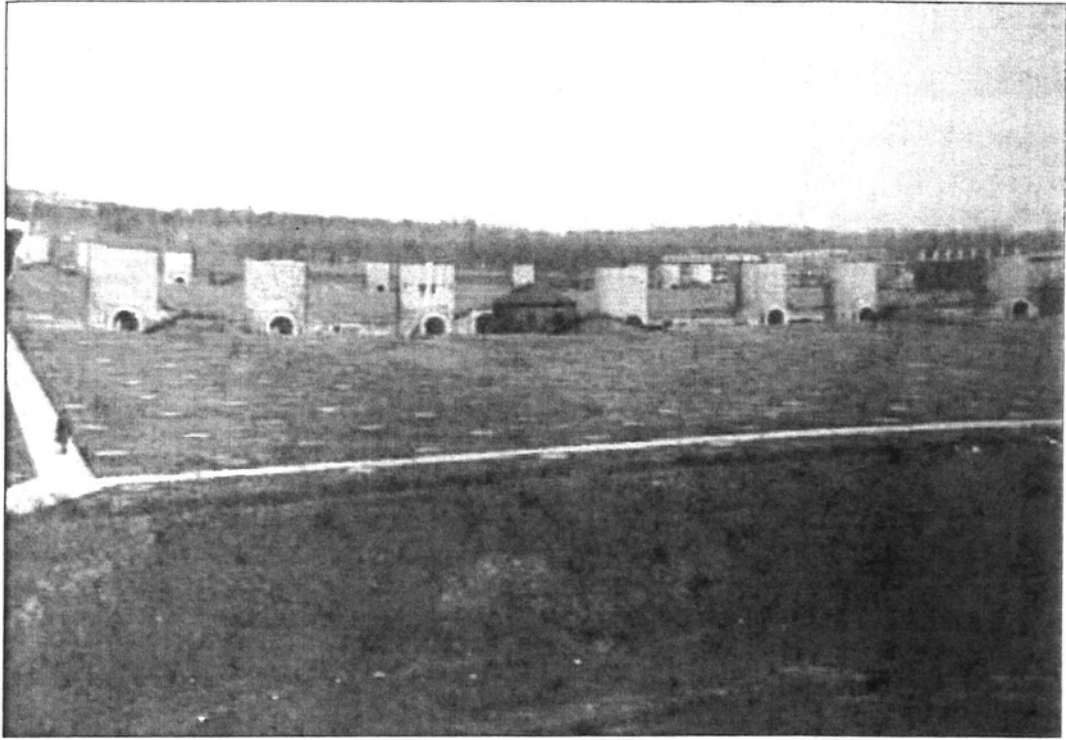


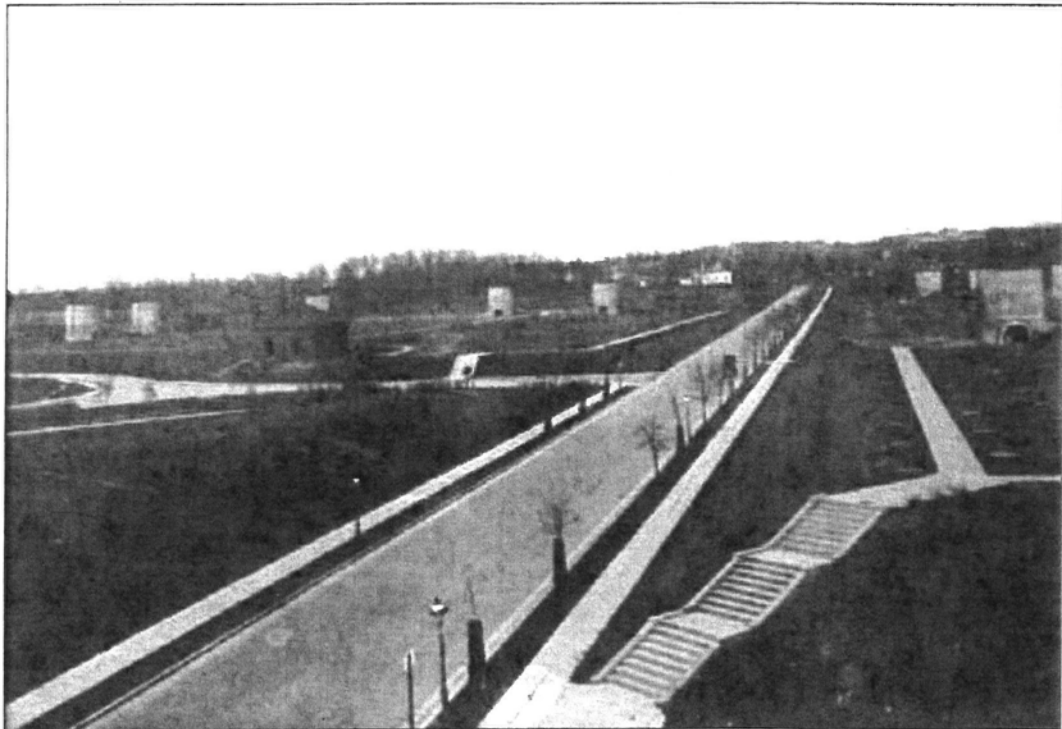
D-3: North end of McMillan Sand Filtration Plant, looking northwest, Bolling Field Photo, Negative 9905 A.S. (summer 1921)  
RG 18AA, Box 153, No. 22  
Courtesy of the National Archives Records Administration, Still Pictures Division



D-2: View of McMillan Sand Filtration Plant, looking north, Bolling Field Photo, Negative 9903 A.S. (summer 1921)  
RG 18AA, Box 153, No. 21  
Courtesy of the National Archives Records Administration, Still Pictures Division



C-14: Panoramic view looking northeast over filter beds (c. 1904)  
Courtesy of the Archives of the Washington Aqueduct



C-15: Looking north along First Street (c. 1910)  
Courtesy of the Archives of the Washington Aqueduct



Uncovering the History of DC's Bloomingdale Neighborhood

Monday, February 3, 2014

### 1917: Girl Scouts Garden at McMillan

In 1917, as the war raged in Europe, and Americans planted gardens at home, the local Girl Scouts planted gardens, including one on the McMillan filtration grounds. The Girl Scouts learned to can during the summer and a Girl Scout who lived on W Street won the top prize from the National Emergency Food Garden Commission.



Girl Scouts preparing ground for seed at their filtration plant farm.



(1917, Jun 17). *The Washington Post* (1877-1922)

**Blog Archive**

- ▼ 2014 (41)
  - ▶ 04/20 - 04/27 (1)
  - ▶ 03/16 - 03/23 (1)
  - ▶ 02/23 - 03/02 (5)
  - ▶ 02/16 - 02/23 (8)
  - ▶ 02/09 - 02/16 (2)
  - ▼ 02/02 - 02/09 (3)
    - Bloomingdale History as of 1937
    - 1909: For the Porch lovers
    - 1917: Girl Scouts Garden at McMillan
  - ▶ 01/26 - 02/02 (5)
  - ▶ 01/19 - 01/26 (8)
  - ▶ 01/12 - 01/19 (6)
  - ▶ 01/05 - 01/12 (2)
- ▶ 2013 (95)
- ▶ 2012 (59)

**Favorite Links**

- Bloomingdale Neighborhood Blog
- Bloomingdale Action List

**Total Pageviews**

**26,582**

**Contributors**

- Bloomingdale History
- Bloomingdale resident

**Labels**

- 1837 (1)
- 1878 (1)
- 1887 (1)
- 1888 (2)
- 1890 (1)
- 1891 (3)
- 1892 (1)
- 1894 (1)
- 1895 (1)
- 1897 (1)
- 1899 (1)
- 1900 (1)
- 1901 (8)
- 1902 (9)
- 1903 (10)
- 1904 (11)
- 1905 (11)
- 1906 (10)
- 1907 (7)
- 1908 (6)
- 1909 (10)
- 1910 (7)
- 1911 (6)
- 1912 (6)

# GIRL SCOUTS TO PLANT BIG GARDENS TOMORROW

Also to Receive Canning Instructions While Cultivating Continental Hall and Other Tracts.

After completing the work of clearing the rubbish from the lots back of Memorial Continental Hall, the Girl Scouts of the District tomorrow will see the land plowed and immediately will begin to plant it.

Seed for planting this tract, as well as two other gardens—between 1st and North Capitol streets, on the filtration plant grounds, and at the Georgetown filtration plant—has been donated by the national emergency food garden commission.

The girls will report at 9:30 o'clock tomorrow morning, and they will work twice a week until the end of the school term, when they will be at the

# Portrait City

## McMillan Park

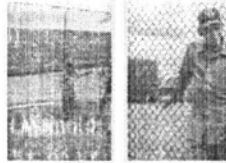
McMillan Park has played an important role in the life of Bloomingdale, Stronghold, and other adjacent neighborhoods since its inception. Some long-time residents recount their experiences: Ben Franklin played there as a child, Ella Walker picnicked with her family by the water, and Frank Braxton received military training "on top of all those sewer tops" as a high-school student prior to World War II. (11/13)



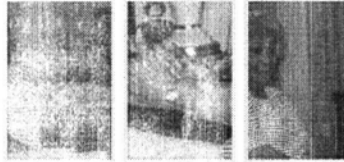
Interview: John Salatti, Jen Quintana, Rosina Teri Memolo  
Photographs: Robert Sullivan

Like { 3 } Tweet { 2 } g+1 { 0 }

### Ben Franklin



### Ella Walker



### Frank Braxton

