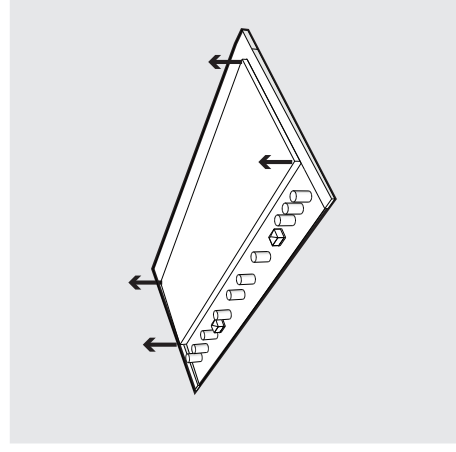


The two primary objectives for the massing of these facilities are to break down the scale of our buildings, while simultaneously keeping the forms clean and legible. We sculpted the building footprints to accommodate the preservation of cell 14 and the vehicular circulation. Next, we stepped the buildings down towards North Capitol Street in order to reduce the perceived scale for the residences along North Capitol Street.

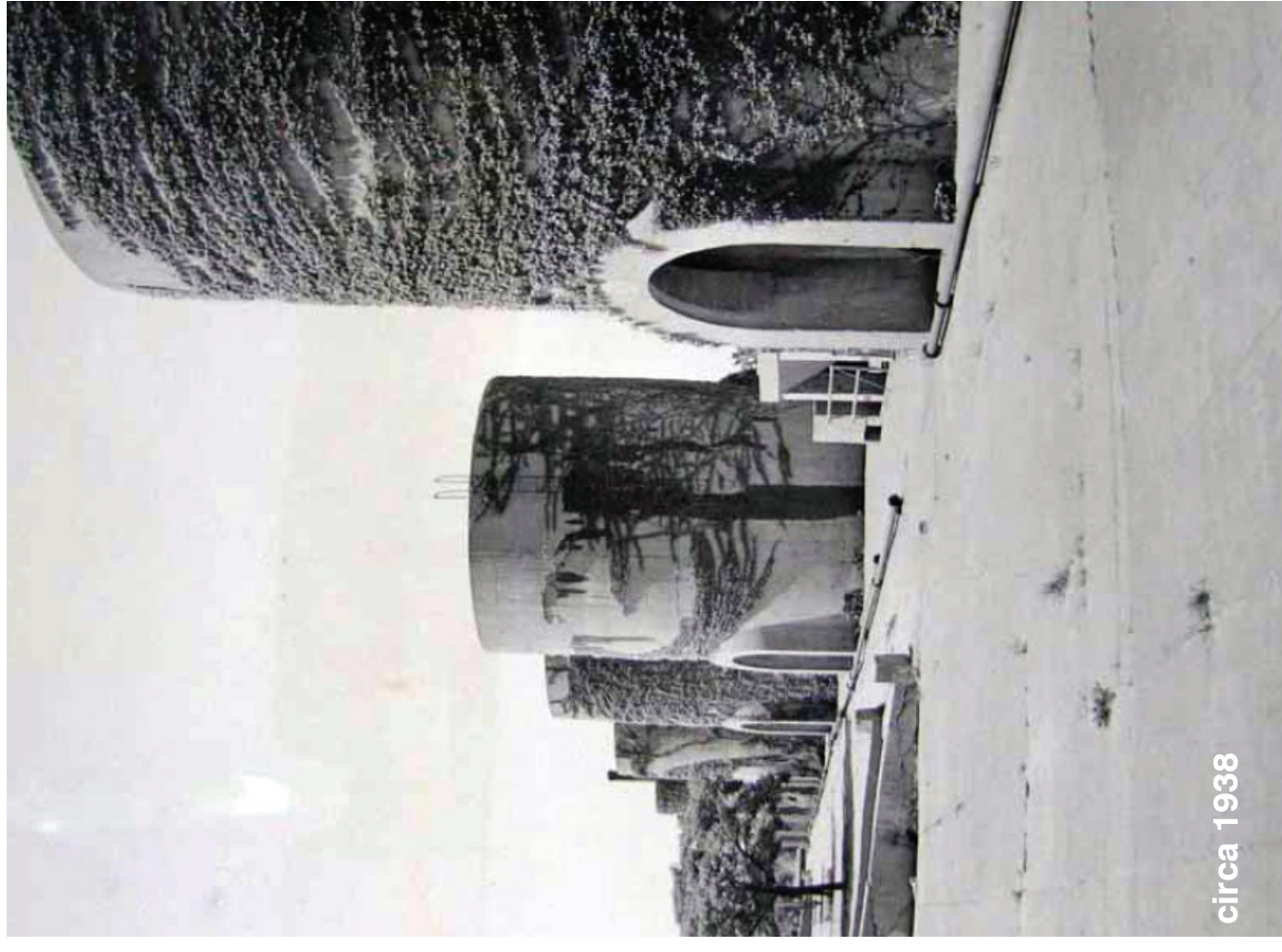
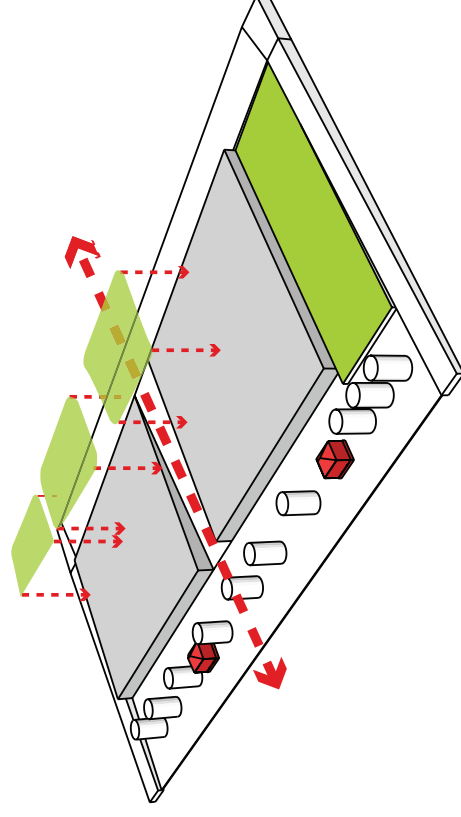
The building mass is further sculpted by the delineation of a base, separating the healthcare facilities from the retail. This base has a canted wall and made of board formed concrete, in memory of the cell walls. Set within the base are the retail bays, with consistent frames but unique retail storefronts.



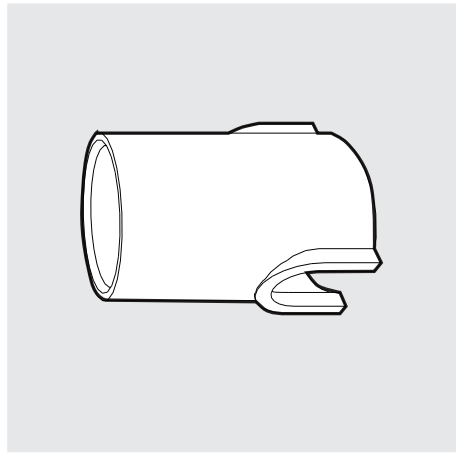
circa 1904



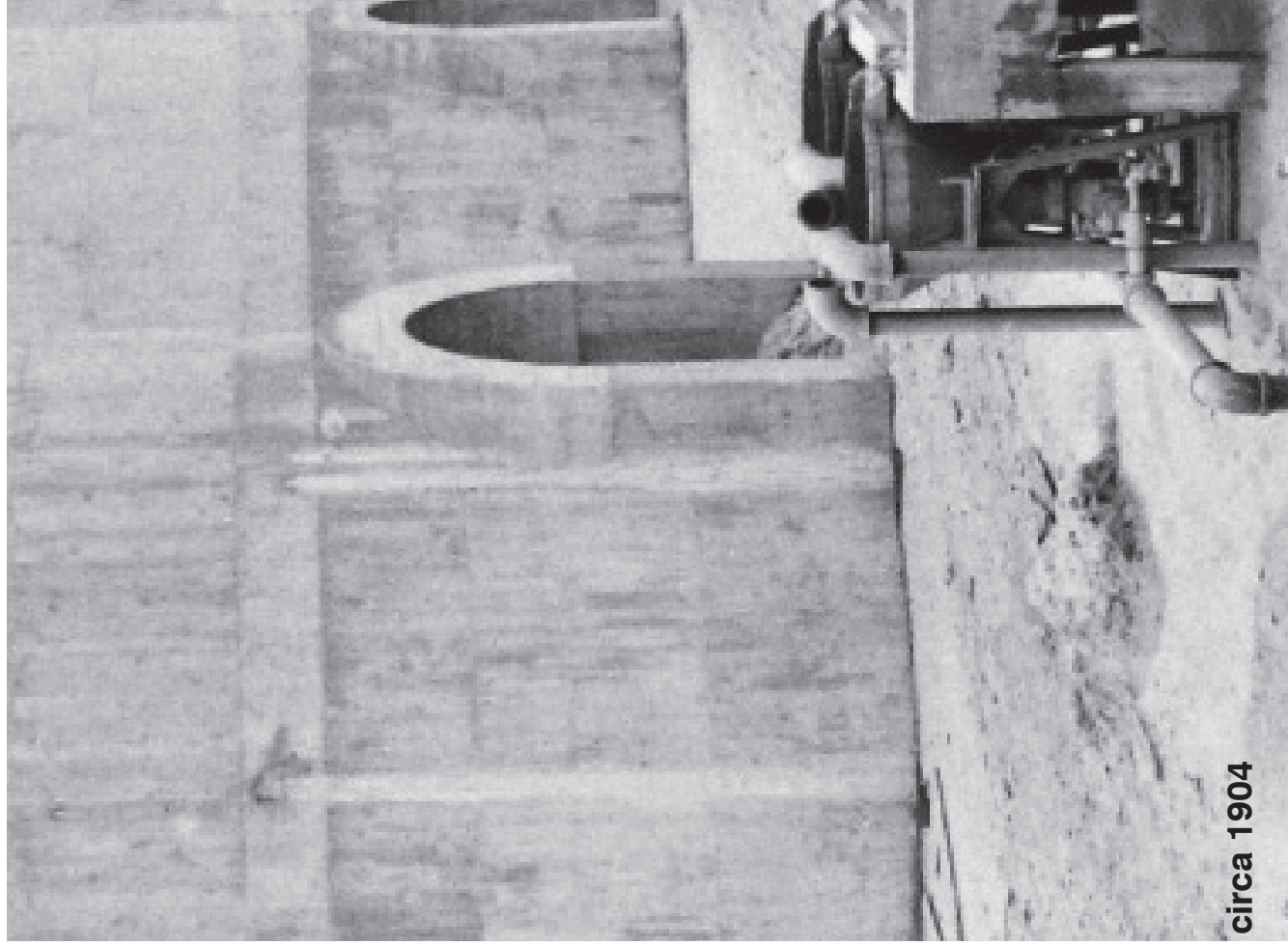
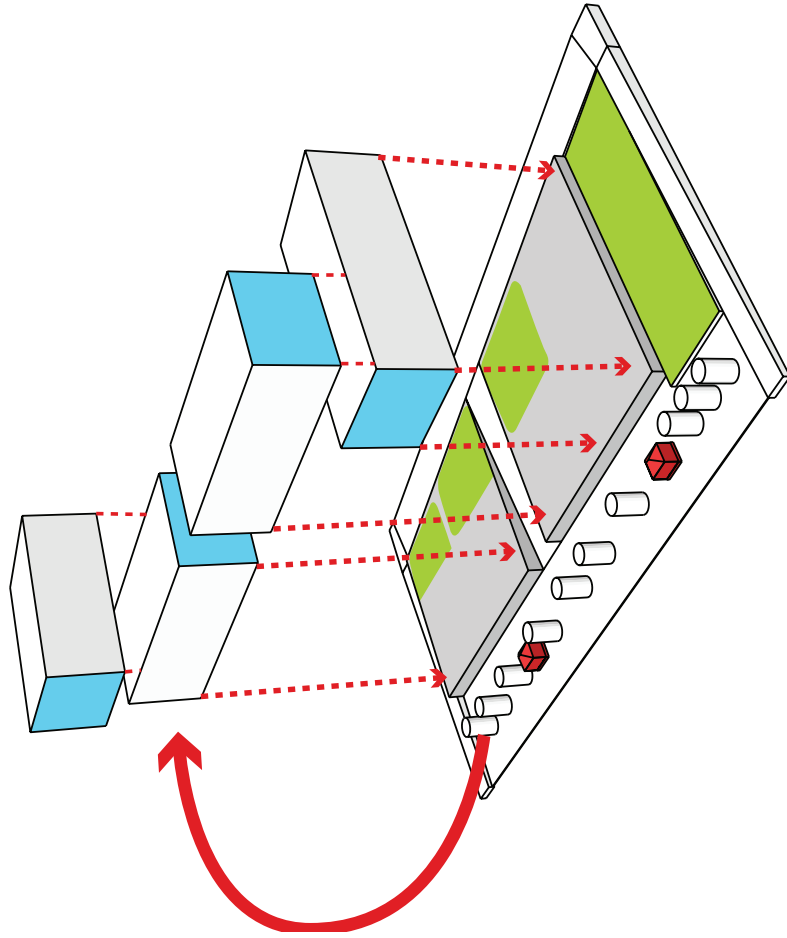
RAISED PLINTH



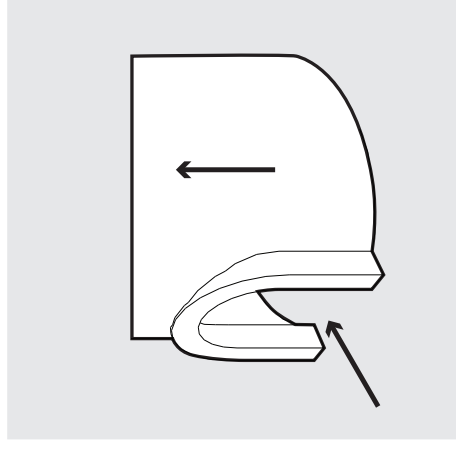
circa 1938



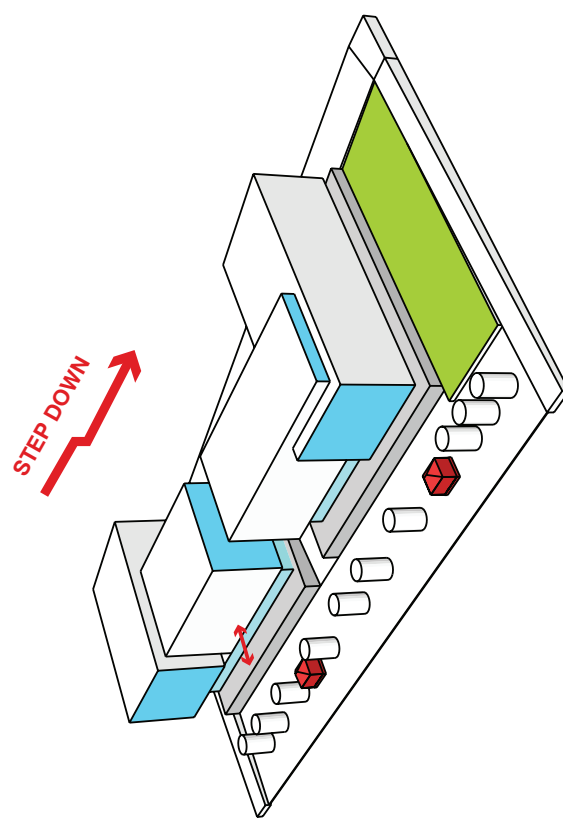
SIMPLE GEOMETRY



circa 1904



EMBEDDED FORMS



RENDERING: LOOKING EAST DOWN THE NORTH SERVICE COURT

Trammell Crow Company

