



BUILDING A

BUILDING C



BUILDING F

NOTES: (1) Flexibility is requested to vary the final selection of the exterior materials within the color ranges and general material types proposed, based on availability at the time of construction without reducing the quality of materials. (2) Flexibility is requested to make minor refinements to exterior details and dimensions, including sills, bases, cornices, railings and trim, and any other changes to comply with the building codes or that otherwise necessary to obtain final building permit

0 8' 16'
 SCALE: 1/16" = 1'-0"



BUILDING KEY PLAN



BUILDING **C**
STREET ELEVATION **CC**: SOUTH SERVICE COURT • NORTH SIDE ELEVATION



BUILDING **C**
STREET ELEVATION **EE**: NORTH CAPITOL STREET • EAST SIDE ELEVATION

NOTES: (1) Flexibility is requested to vary the final selection of the exterior materials within the color ranges and general material types proposed, based on availability at the time of construction without reducing the quality of materials. (2) Flexibility is requested to make minor refinements to exterior details and dimensions, including sills, bases, cornices, railings and trim, and any other changes to comply with the building codes or that otherwise necessary to obtain final building permit





BUILDING **(B)** STREET ELEVATION **DD**: EVARTS STREET • SOUTH SIDE ELEVATION

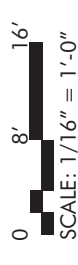


BUILDING **(C)** STREET ELEVATION **FF**: SOUTH SERVICE COURT • NORTH SIDE ELEVATION

NOTES: (1) Flexibility is requested to vary the final selection of the exterior materials within the color ranges and general material types proposed, based on availability at the time of construction without reducing the quality of materials. (2) Flexibility is requested to make minor refinements to exterior details and dimensions, including sills, bases, cornices, railings and trim, and any other changes to comply with the building codes or that otherwise necessary to obtain final building permit



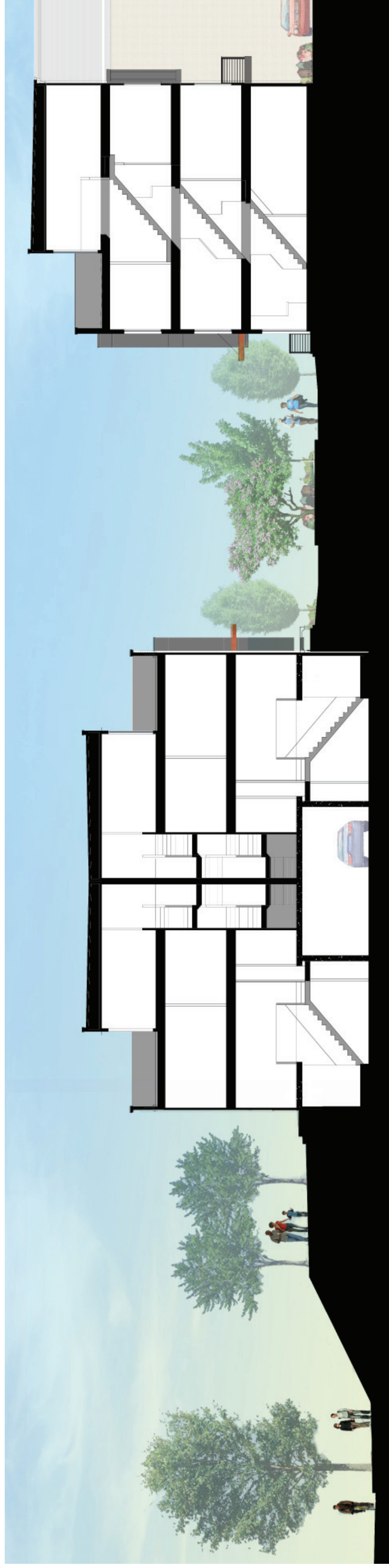
BUILDING **(G)** STREET ELEVATION **GG**: EVARTS STREET • SOUTH SIDE ELEVATION



SITE SECTIONS



BUILDING KEY PLAN



SITE SECTION **HH**: FROM NORTH CAPITOL STREET TO HALF STREET

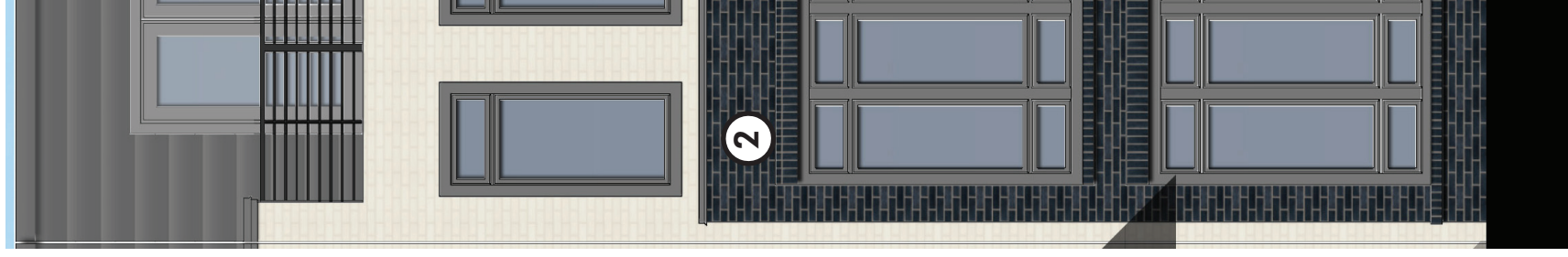
INTERIOR PLAN LAYOUTS ARE CONCEPTUAL AND FOR ILLUSTRATIVE PURPOSES; FINAL LAYOUTS MAY VARY.



INTERIOR PLAN LAYOUTS ARE CONCEPTUAL AND FOR ILLUSTRATIVE PURPOSES; FINAL LAYOUTS MAY VARY.



A. DETAIL



B. DETAIL

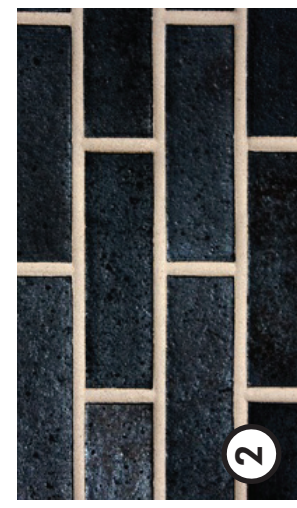


A.

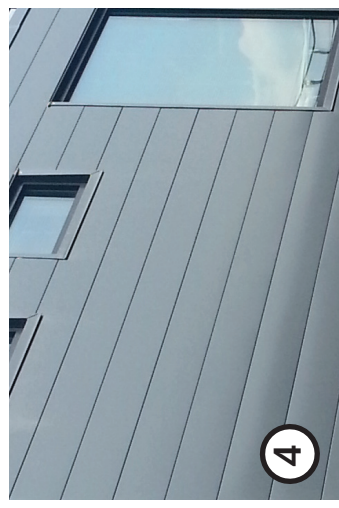
- ① WHITESTONE BRICK WITH WHITE MORTAR
- ② MANGANESE IRONSPOT SMOOTH BRICK WITH WHITE MORTAR
- ③ CHARCOAL GREY PANEL
- ④ CHARCOAL GREY (ZINC) METAL SIDING WITH CONCEALED FASTENERS
- ⑤ STAINED WOOD CANOPY WITH WIRE TIEBACKS
- ⑥ BLACK (ALUMINUM) METAL HANDRAILS
- ⑦ CLEAR GLASS WITH LOW-E COATING; CHARCOAL GREY WINDOW TRIM
- ⑧ CHARCOAL GREY METAL WRAPPED DOOR WITH CLEAR GLASS WITH LOW-E COATING



①



②



④



⑤

NOTES: (1) Flexibility is requested to vary the final selection of the exterior materials within the color ranges and general material types proposed, based on availability at the time of construction without reducing the quality of materials. (2) Flexibility is requested to make minor refinements to exterior details and dimensions, including sills, bases, cornices, railings and trim, and any other changes to comply with the building codes or that otherwise necessary to obtain final building permit