



Crataegus viridis 'Winter King'



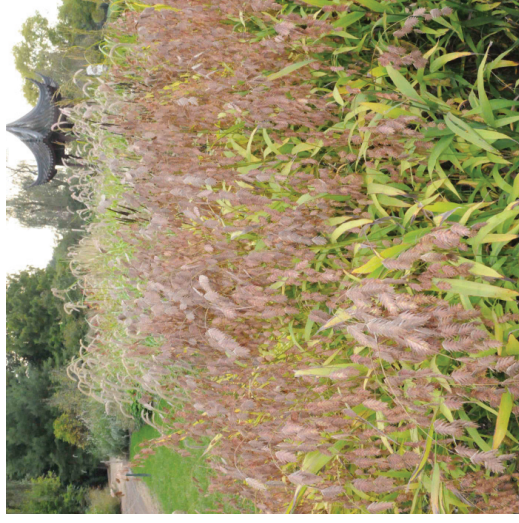




*Panicum virgatum*



*Carex stricta*



*Chasmanthium latifolium*



*Itea virginica*



*Rudbeckia hirta*



*Aster novae-angliae*



*Eupatorium 'Little Joe'*



*Monarda fistulosa*



*Amsonia hubrichtii*



*Solidago rugosa*