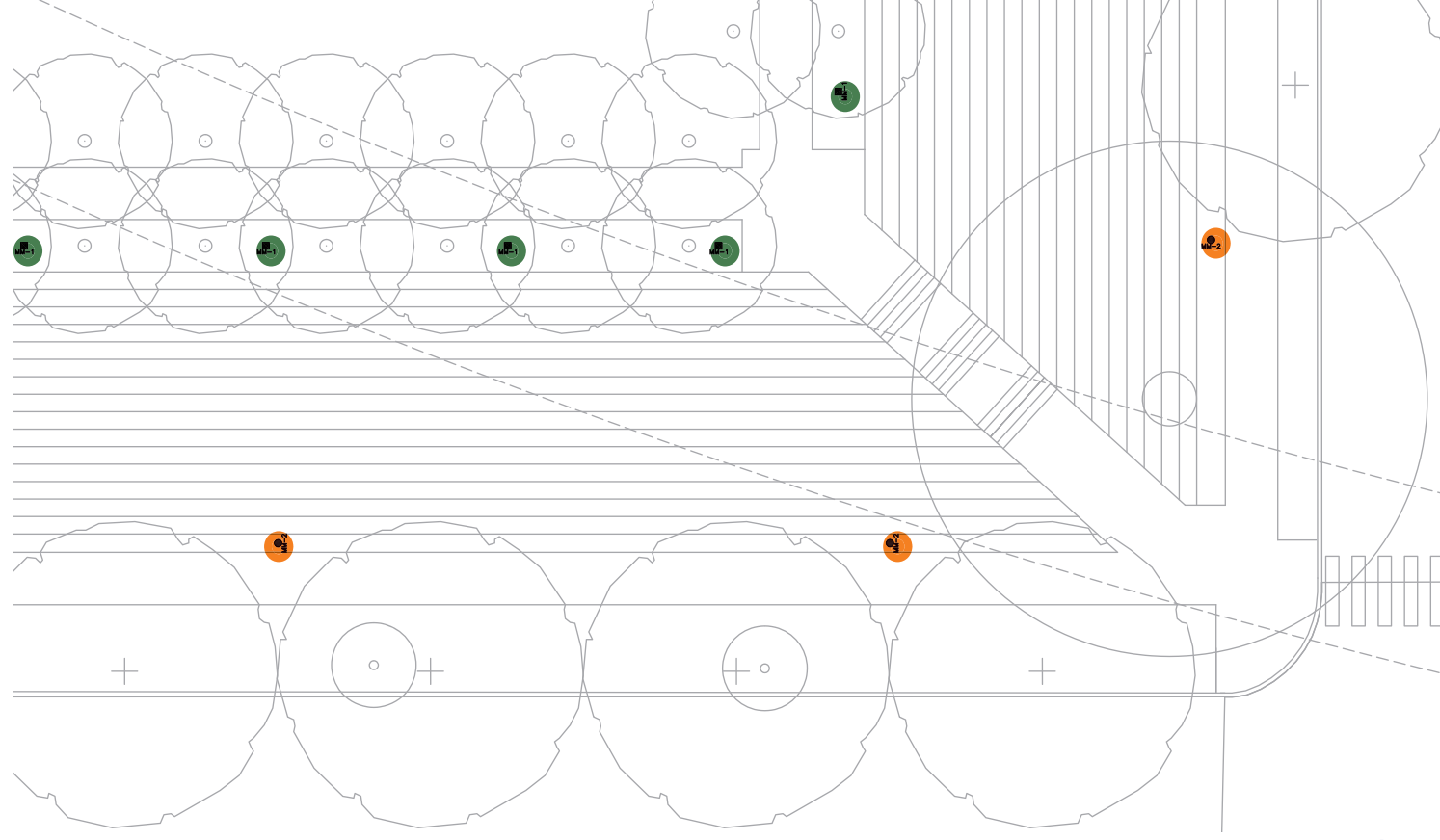


B

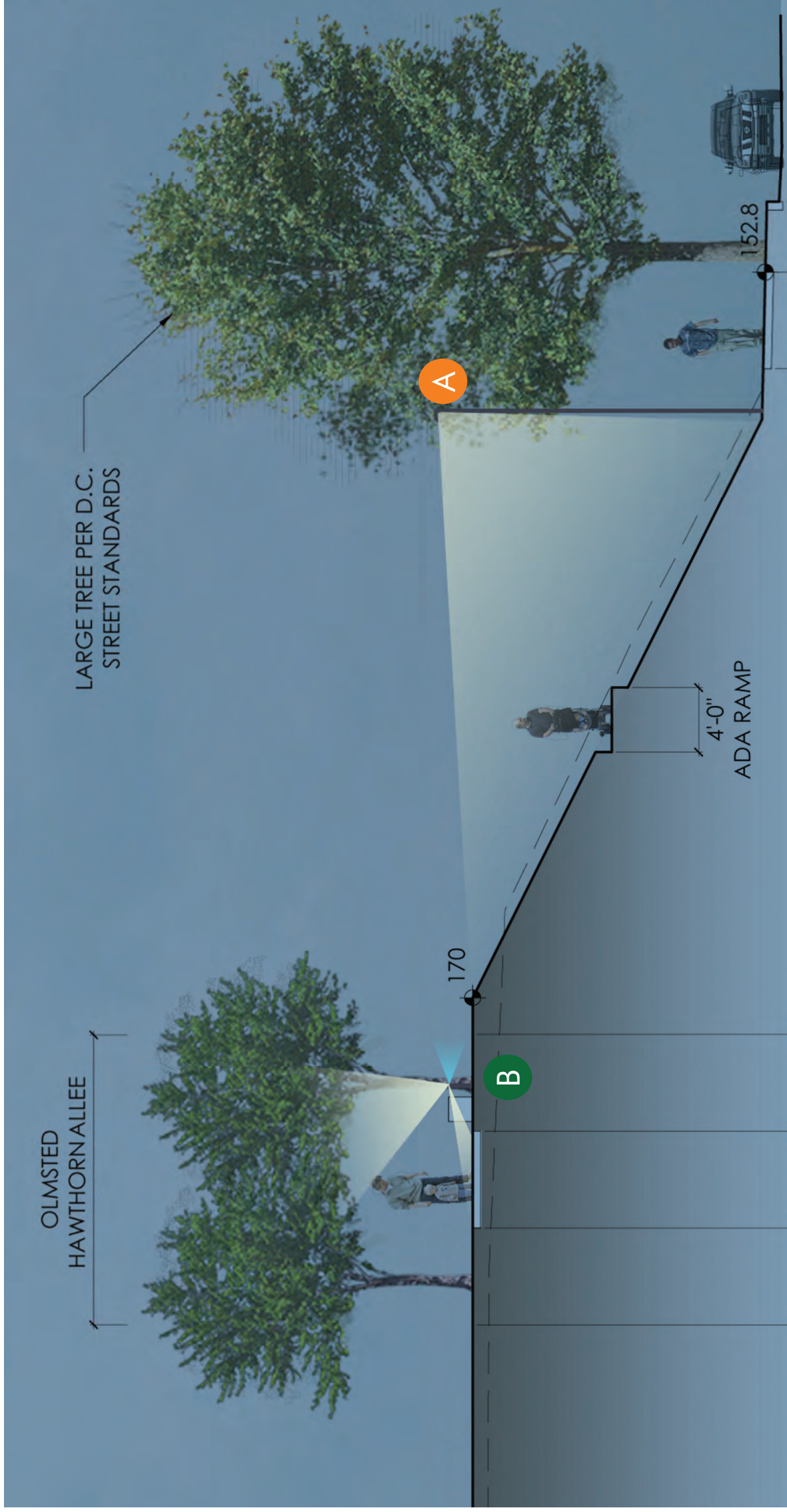


CITY ELEMENTS 230
Illuminating bollard for pathway
and tree illumination

Olmsted Walk & Berm



SECTION



SECTION

- A Berm Lighting
- B Olmsted Walk Bollards
- C Street Lamp
- D Service Court Wall Linear Lighting
- E Sand Silo Linear Lighting
- F Manhole Stud Lights
- G Catenary Lights
- Custom Modified Fixture TBD

A

LED pole top luminaires with asymmetrical light distribution

Type: Die-cast aluminum housing and slip filter. Slip fits 3" O.D. pole top, screws to pole with integrated slip filter mechanism and single set screw. Pole top is constructed of die-cast aluminum with a 1/2" diameter hole. All aluminum used in the construction is marine grade and copper free.

BEGA Product: BEGA

Project: [Blank]

Voltage: [Blank]

Options: [Blank]

Modified: [Blank]

Notes:

- Finish:** These luminaires are available in four standard BEGA colors: Black (BLK); White (WHT); Bronze (BRZ); Silver (SLV). To specify, add appropriate suffix to luminaire part number.
- SA:** Certified to U.S. and Canadian standards for wet locations.
- Weight:** 23 lbs.
- Effective Projected Area (EPA):** .86 f²
- Luminaire Lumens:** 11715 (tested in accordance with LM-79-08)

Technical Specifications:

- Material:** Die-cast aluminum housing and slip filter. Slip fits 3" O.D. pole top, screws to pole with integrated slip filter mechanism and single set screw. Pole top is constructed of die-cast aluminum with a 1/2" diameter hole. All aluminum used in the construction is marine grade and copper free.
- Finish:** These luminaires are available in four standard BEGA colors: Black (BLK); White (WHT); Bronze (BRZ); Silver (SLV). To specify, add appropriate suffix to luminaire part number.
- SA:** Certified to U.S. and Canadian standards for wet locations.
- Weight:** 23 lbs.
- Effective Projected Area (EPA):** .86 f²
- Luminaire Lumens:** 11715 (tested in accordance with LM-79-08)

Electrical: 150W LED luminaire, 174 total system watts, -30°C start temperature, integral 120V through 277V electronic LED driver, 0-10V dimming, integral 10KV surge protection. Standard LED color temperature is 4000K with an 85 CRI. Available in 3000K (P3-CRI) and 5000K (P5-CRI).

Dimensions: See drawing for dimensions. Luminaire height is 152.8" from the top of the pole to the top of the luminaire. Luminaire width is 17.0" from the center of the luminaire to the center of the luminaire.

Single LED pole-top luminaires

Lamp	LED	A	B	C	
PARALED	150W LED	L2-0	13%	3	32%

Recommended for use with 30" to 35" poles.

B

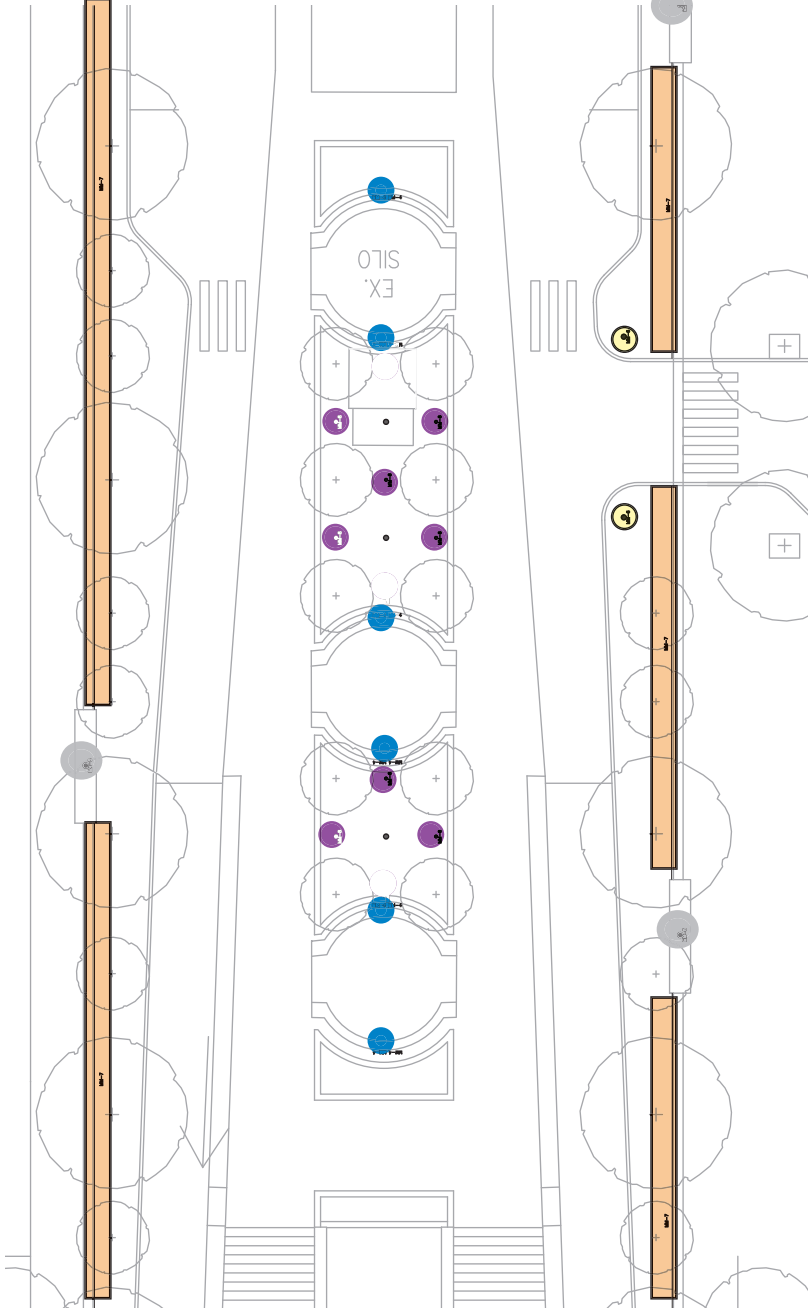
CITY ELEMENTS
Modular Light Column System

hess

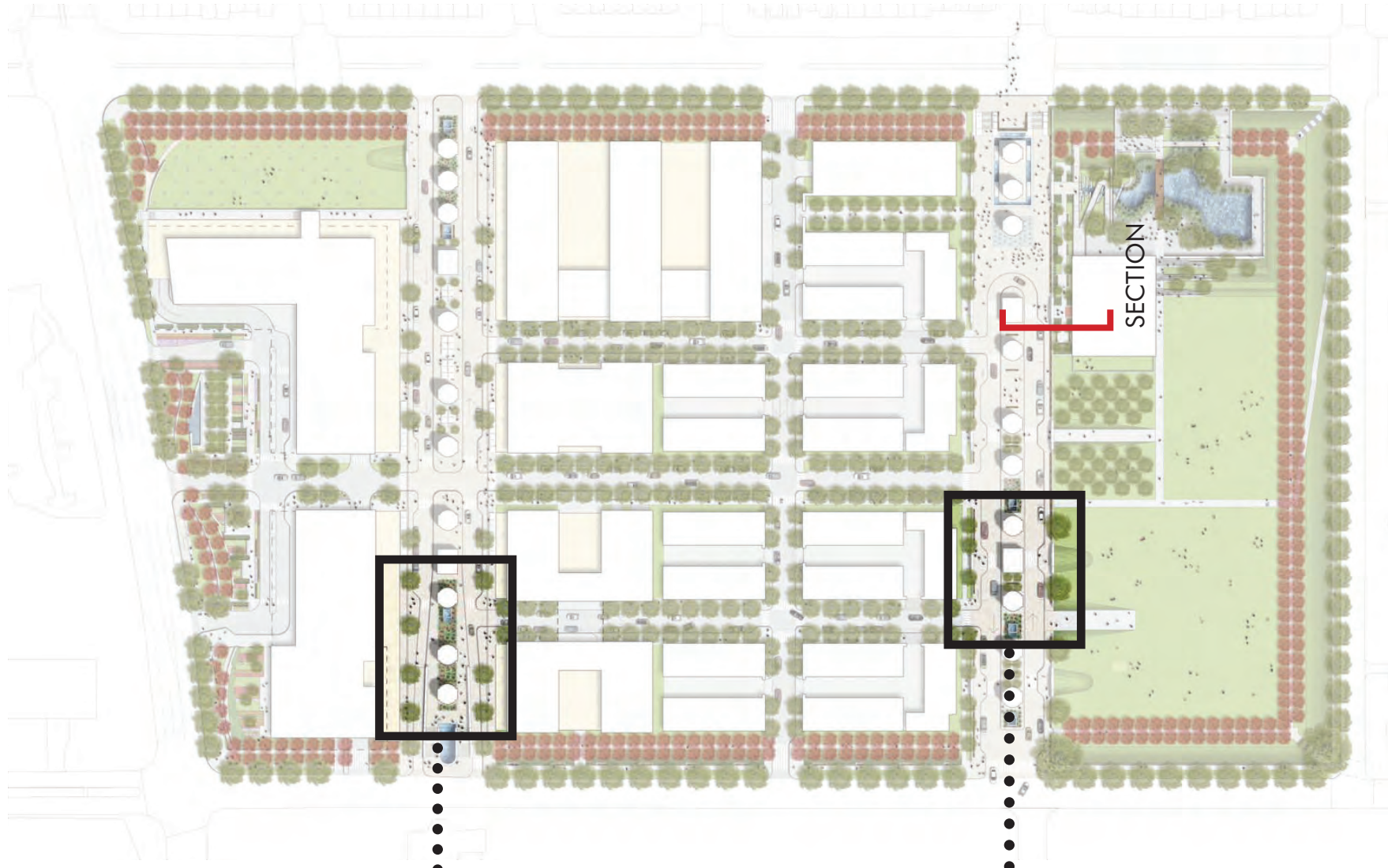
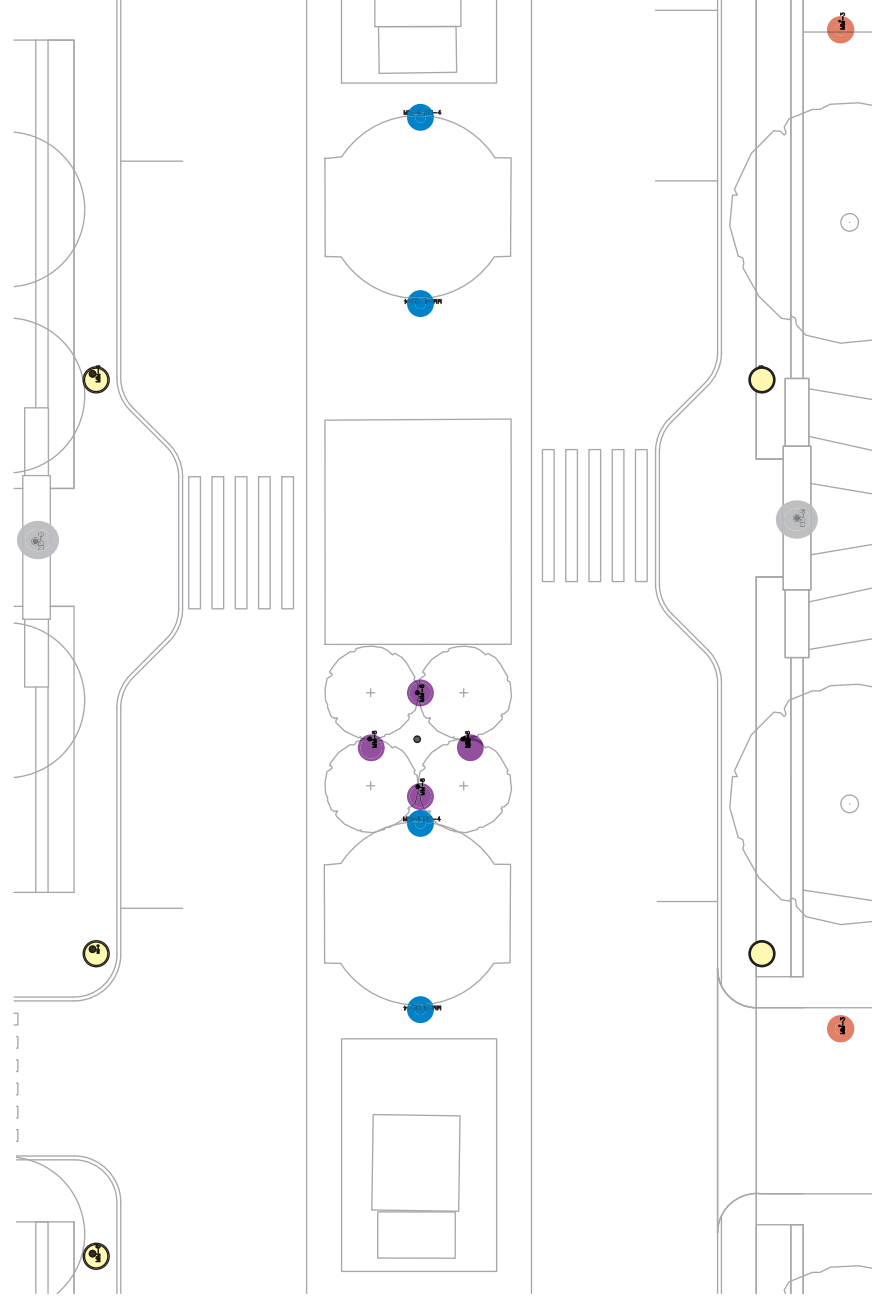
SERVICE COURTS



North Service Court



South Service Court





SECTION

- A Berm Lighting
- B Olmsted Walk Bollards
- C Street Lamp
- D Service Court Wall Linear Lighting
- E Sand Silo Linear Lighting
- F Manhole Stud Lights
- G Catenary Lights
- Custom Modified Fixture TBD

LED pole top luminaires with asymmetrical light distribution



Type: BEGA Product:
Project: Voltage:
Color: Options:
Modified:

Housing: Die-cast aluminum housing and slip filter. Slip filter 30° O.D. pole top. Luminaire head slope adjustment located in slip filter for 0° or 15° head angle. All aluminum used in the construction is marine grade and copper free.

End-use: Fixtures are rugged, constructed of die-cast aluminum with toolless access to the LED array. The LED array is protected by a clear, scratch-resistant, clear acrylic lens. Fully sealed light distribution for no fogging above horizontal. Fully gasketed with a molded silicone gasket.

Electrical: 150W LED luminaire, 174 total system watts, -30° C start temperature. Integral 120V through 277V electronic LED driver. 0-10V dimming. Integral 50KV surge protection. Available in 3000K (85 CRI), add suffix K3 to order.

Note: LEDs supplied with luminaire. Due to the dynamic nature of LED technology, LED luminaire data on this sheet is subject to change at the discretion of BEGA-US. For the most current technical data, please refer to www.bega-us.com.

Finish: These luminaires are available in four standard BEGA colors: Black (BK); Silver (SL); White (WH); and Clear (CL). Custom colors are available upon request. Custom colors subject to availability and additional charges. Custom color samples available upon request. Custom color samples subject to availability and additional charges.

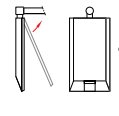
CSA: Certified to U.S. and Canadian standards for wet locations. Protection class: IP66.

Weight: 23 lbs.

Effective Projected Area (EPA): 36 f²

Luminaire Lumens: 11715

Tested in accordance with LM-79-08



Single LED pole top luminaires

Luminaire	LED	A	B	C
3000K LED	150W LED	13 1/4"	3	3 1/4"

Recommended for use with 30° to 30° poles.

BEGA-US 1000 BEGA Way, Carpinteria, CA 93013 (805) 684-0553 FAX (805) 566-9474 www.bega-us.com
Copyright BEGA-US 2012 Updated 1/13

XOOLUX™ HERCULES IP54



35.8 Watt/meter
17992 lumen/meter (lm/m)
1 24 V Plug & Play
Ra/CRI 92



IP Rating: IP54 Oberflache: Aluminium eloxiert Finish: Anodized Al Silver

Elektrische & Optische Betriebsdaten Electrical & optical data

Abmessungen Dimensions	L x 40 mm x 24 mm
Leistung Power	35.8 W/meter
Spannung Voltage (V)	24 Volt (24 V, 25 V, 27 V)
Temperatur Temperature	T _{amb} = -25°C, T _{max} = +70°C
Lager Temp. Storage Temp.	T _{min} = -25°C, T _{max} = +85°C
Aufkutemperatur Ambient Temp.	T _{min} = -25°C, T _{max} = +45°C

When fabricating or installing, components are 50% shorter in length than the LED luminaire. For more details regarding catalogue changes, min and max data sheet values and product lot access see the LED Linear main catalogue, page 361.

Length	H x L LED	Voltage (VDC)	Current (A)	Modes and total luminaires per (m)			
				HERCULES IP54	HERCULES IP50	HERCULES IP50	
205 mm (8")	3	24 V	0.25	263	267	284	300
542 mm (21")	9	24 V	0.25	788	802	827	851
900 mm (35")	15	24 V	0.25	1333	1337	1379	1408
1060 mm (42")	18	24 V	0.25	1576	1600	1664	1702



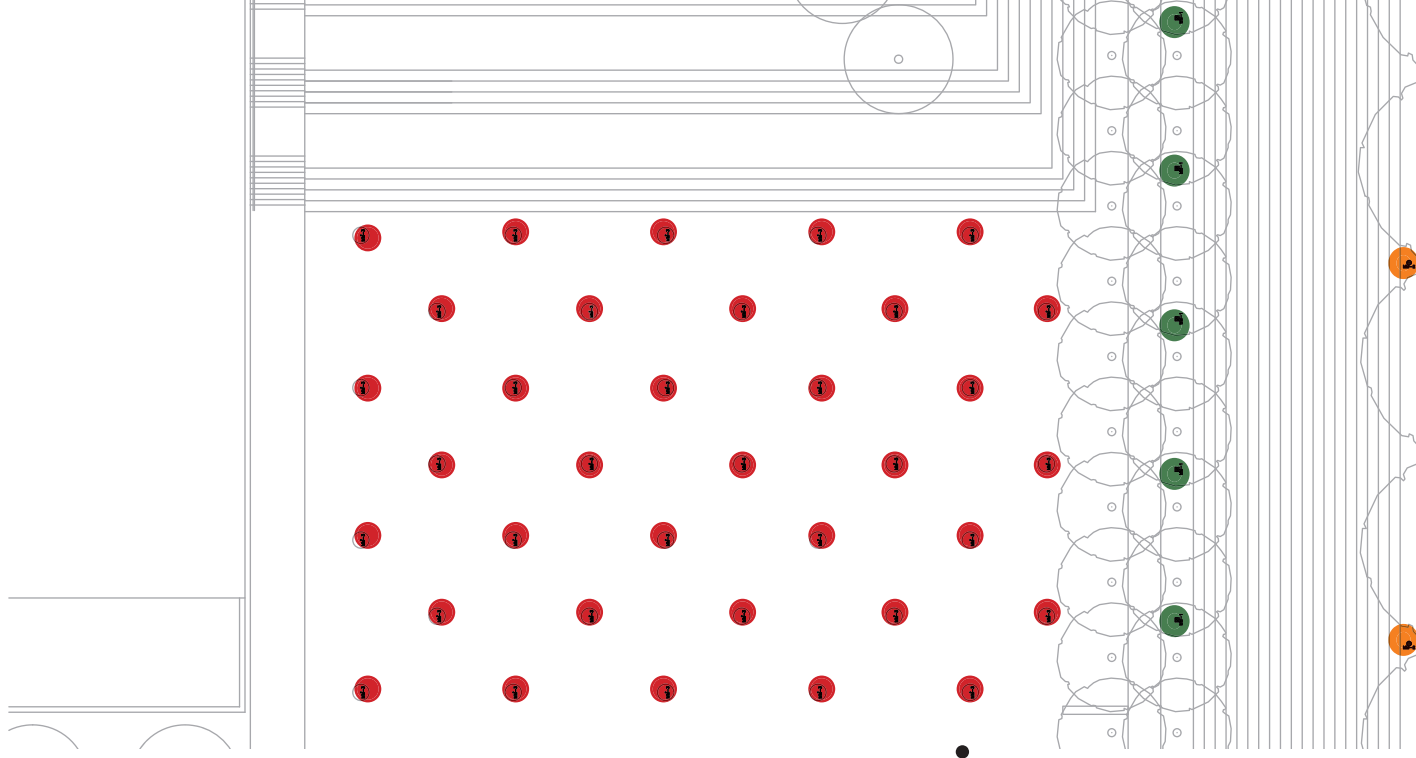
F



SolarLite Road Studs™



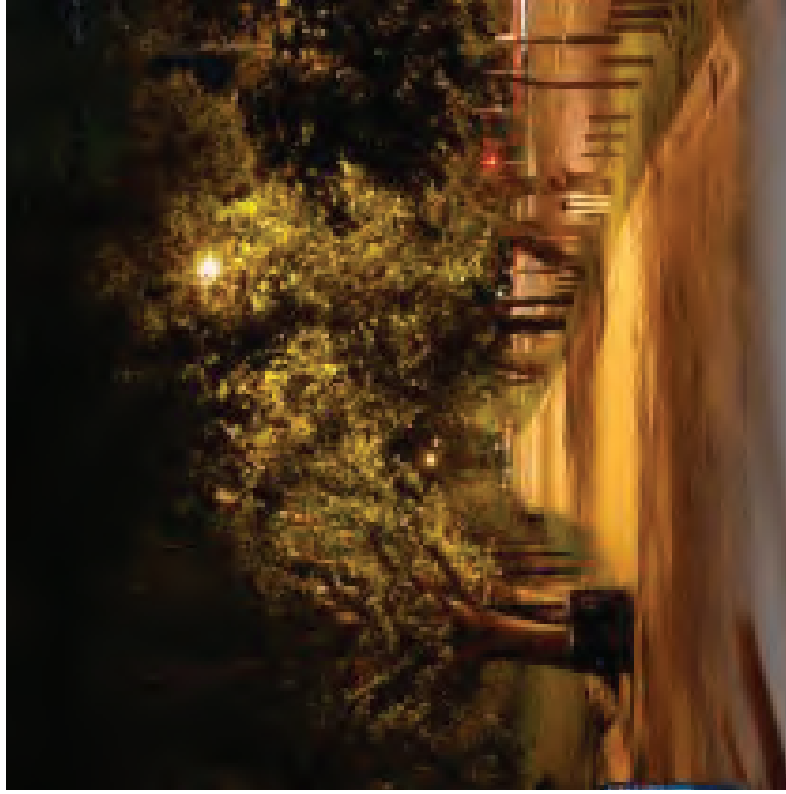
Cells 14 & 28: Manholes



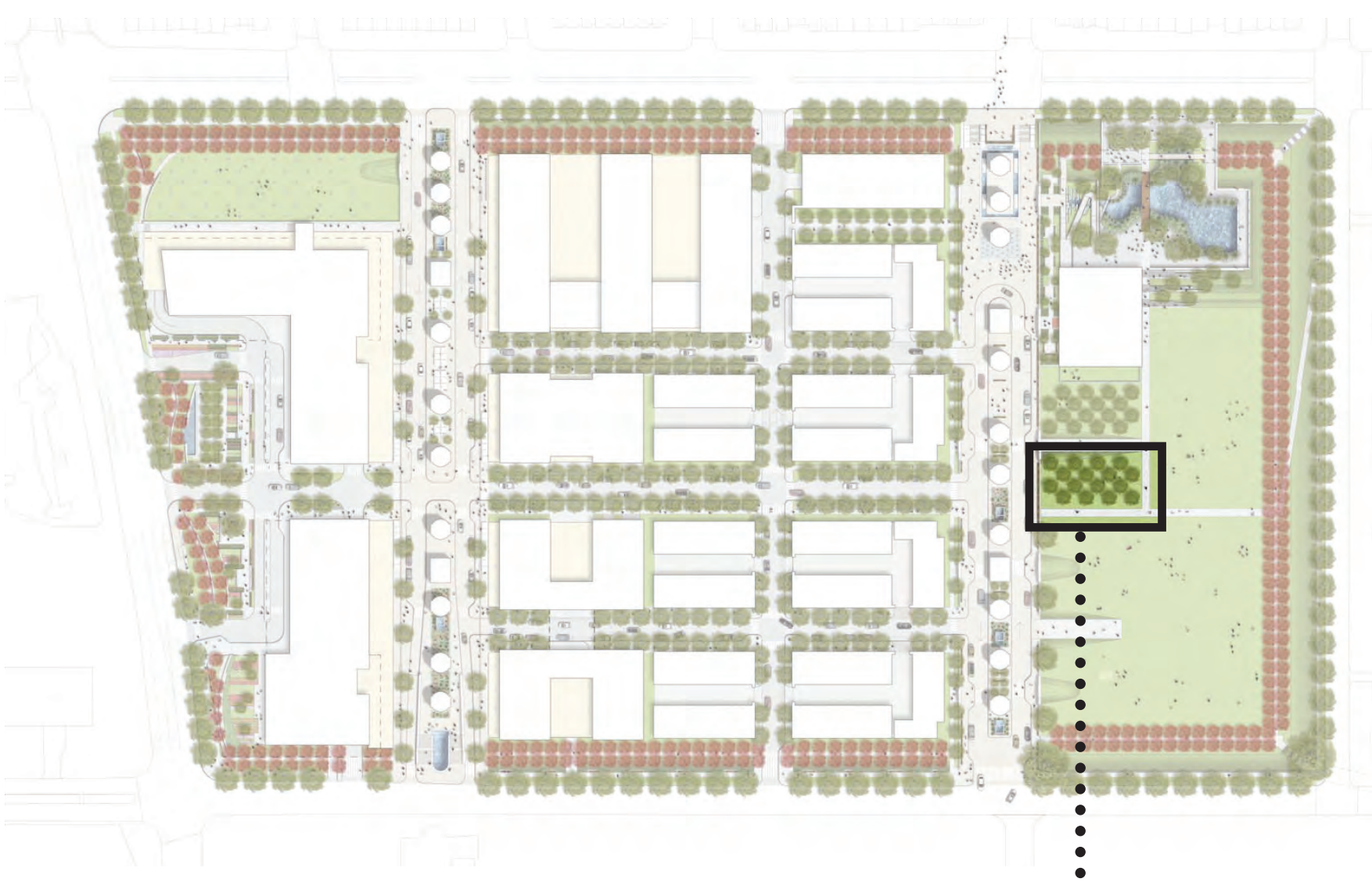
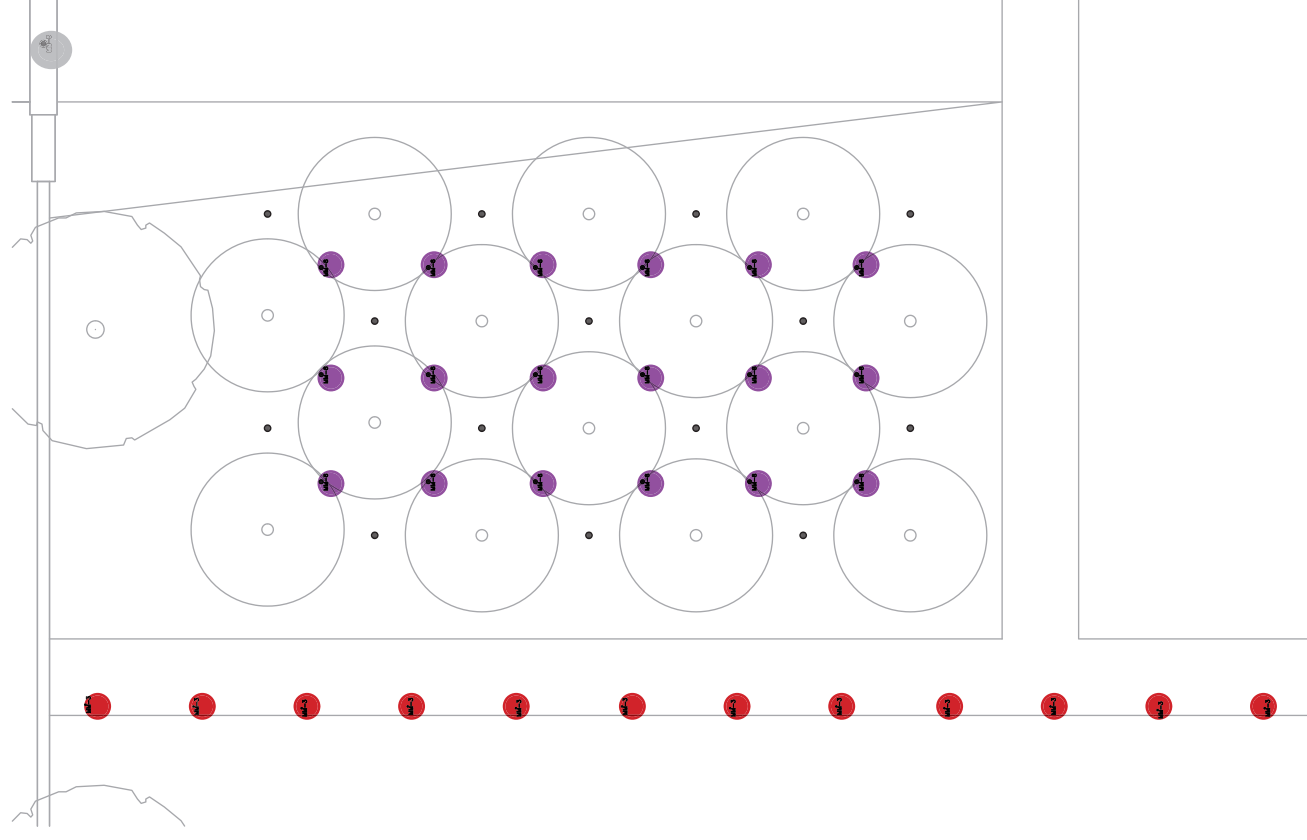
G



Ring Mount
Delta Star™
Shown in Black Satin Finish (BLP)



Bosque of Trees



- A Berm Lighting
- B Olmsted Walk Bollards
- C Street Lamp
- D Service Court Wall Linear Lighting
- E Sand Silo Linear Lighting
- F Manhole Stud Lights
- G Catenary Lights
- Custom Modified Fixture TBD