



HEALTHCARE FACILITIES

DEVELOPER

TRAMMELL CROW COMPANY

PROJECT DIRECTOR

ANNE L. CORBETT

ARCHITECTS

SHALOM BARANES ASSOCIATES

LANDSCAPE ARCHITECTS

NELSON BYRD WOLTZ









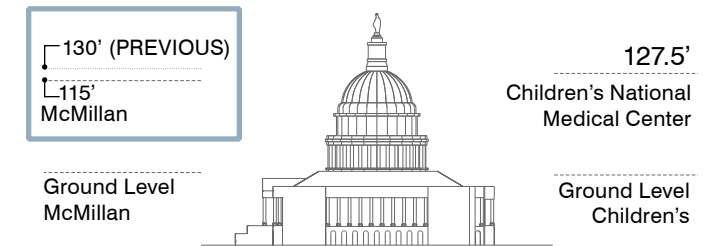
AFRH SITELINE STUDY (REVISED 115' MAX HEIGHT+NCPC SHIFT)



AFRH VIEWS (MASTER PLAN AUGUST 2008)

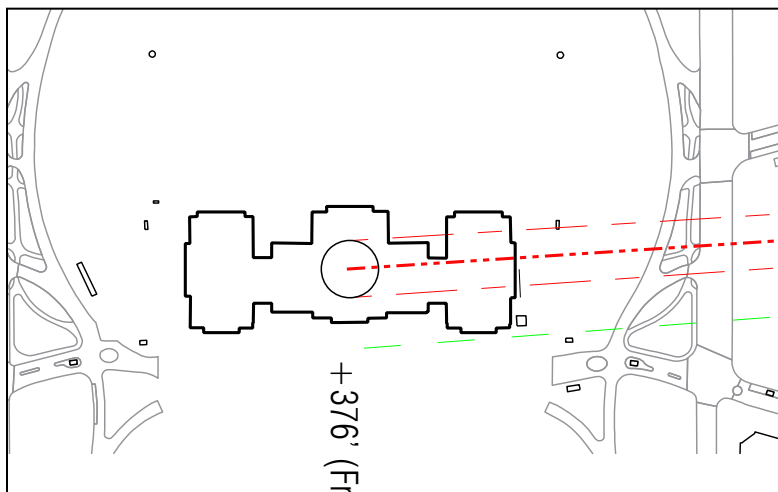


1. VIEW FROM SCOTT STATUE (VIEW OF CAPITOL BLOCKED BY TREES)

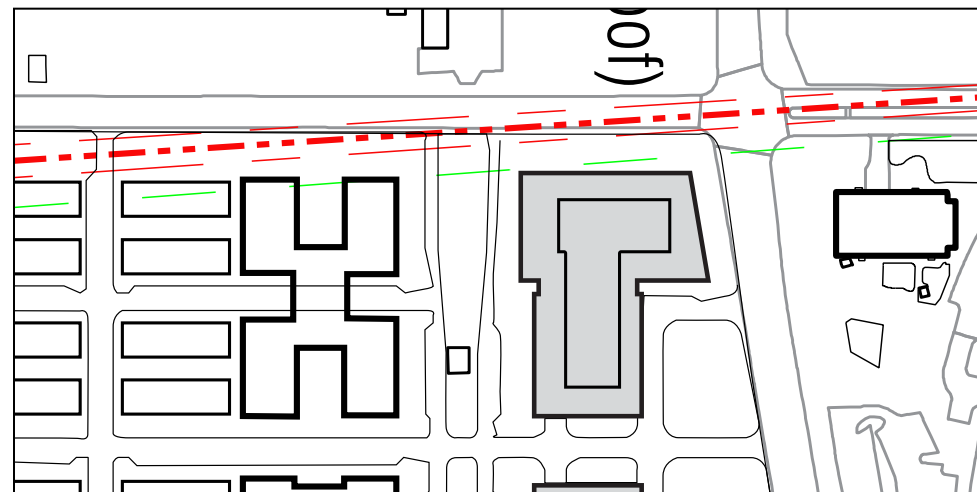


NOTE: IF THE CAPITOL DOME WERE VISIBLE THROUGH THE TREES, THE McMILLAN BUILDINGS WOULD FRAME THE DOME ON THE LEFT, SIMILAR TO HOW CHILDREN'S HOSPITAL CURRENTLY FRAMES IT ON THE RIGHT.

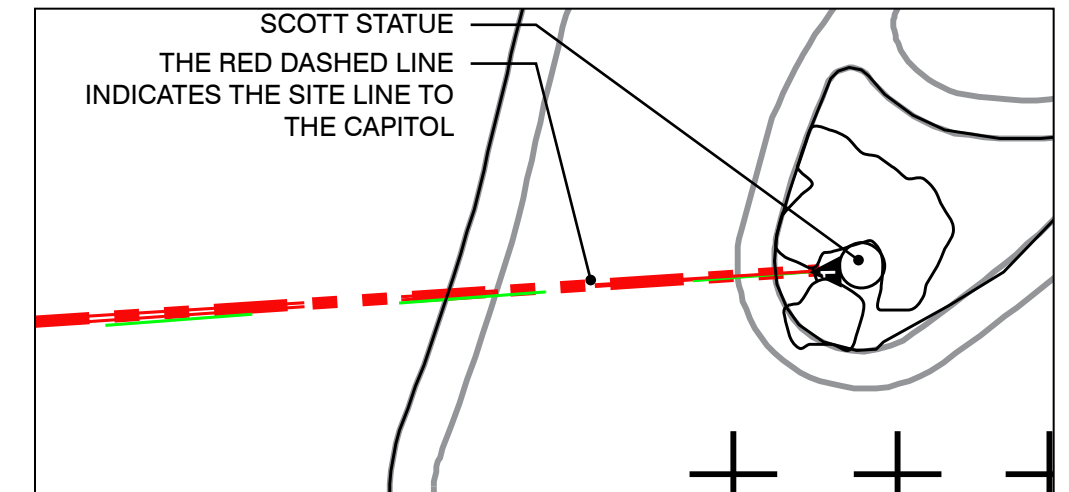
2. BUILDING HEIGHT RELATIONSHIP



A ENLARGED SITELINE @ CAPITOL DOME



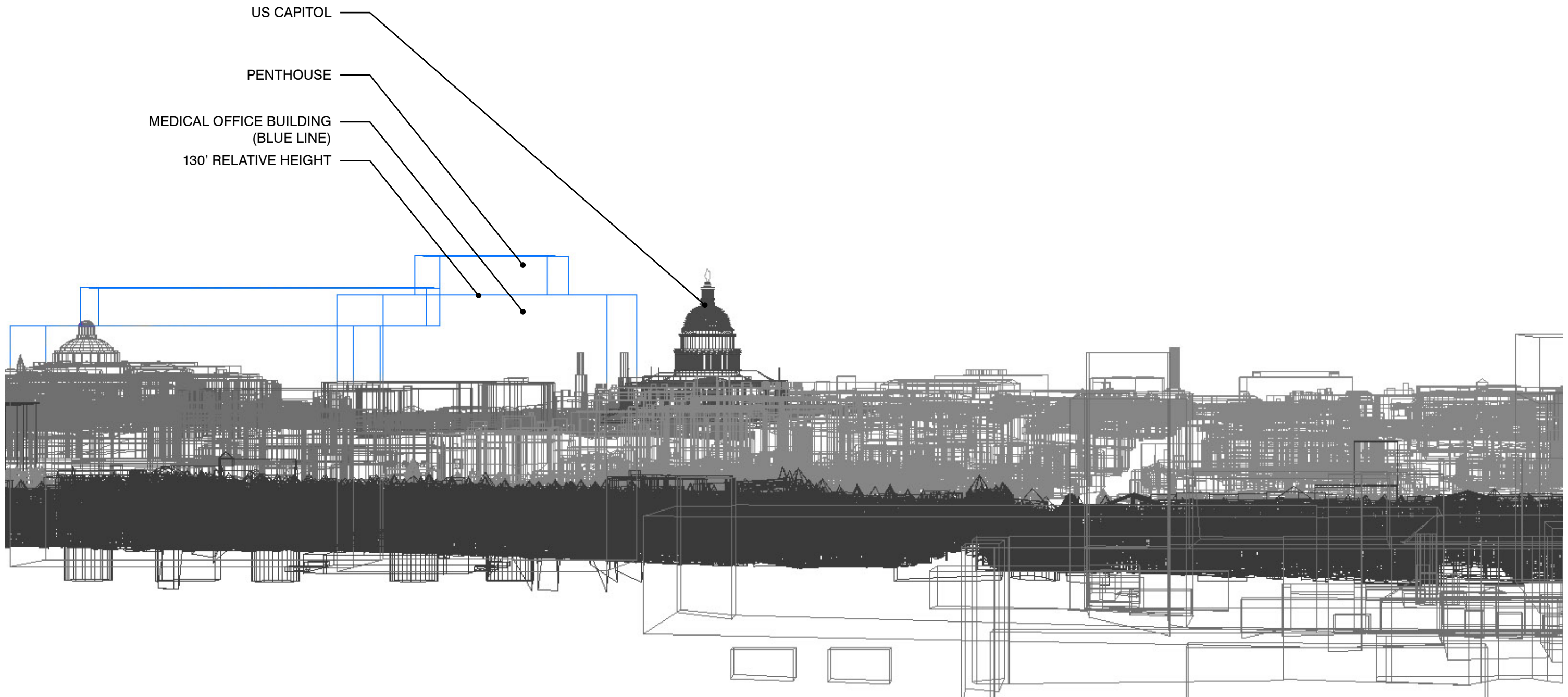
B SITELINE @ McMILLAN SITE



C SITELINE @ SCOTT STATUE

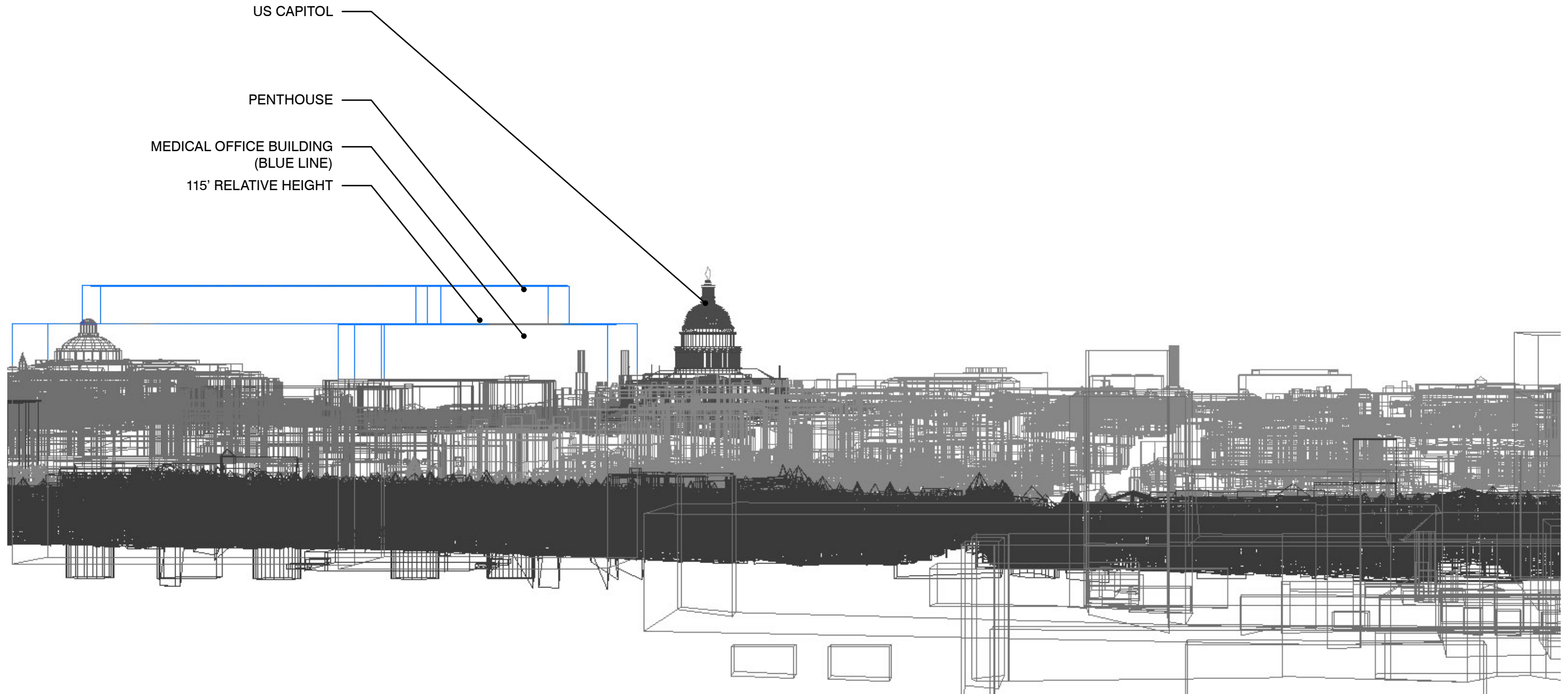


SITELINE FROM SCOTT STATUE TO THE CAPITOL DOME (LABELED VIEW 3 IN AFRH MASTER PLAN)



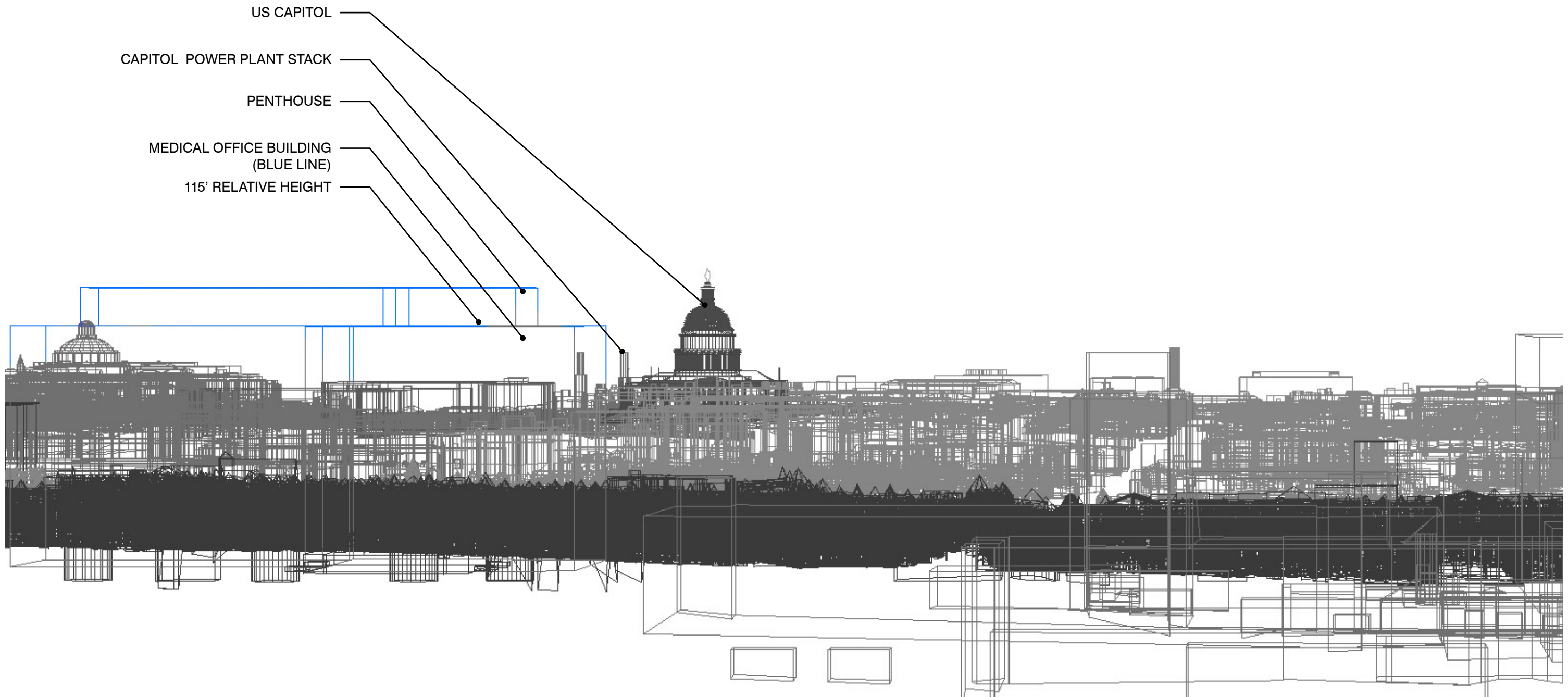
WIREFRAME PERSPECTIVE VIEW TAKEN FROM SCOTT STATUE @ 301'-0" ABOVE SEA LEVEL.

3D MODEL WAS CREATED BY CYBERCITY 3D, INC FOR THE DC GIS DEPARTMENT (OCTO) IN 2009. SBA HAS ADDED THE 3D MODEL OF THE MEDICAL OFFICE BUILDING.



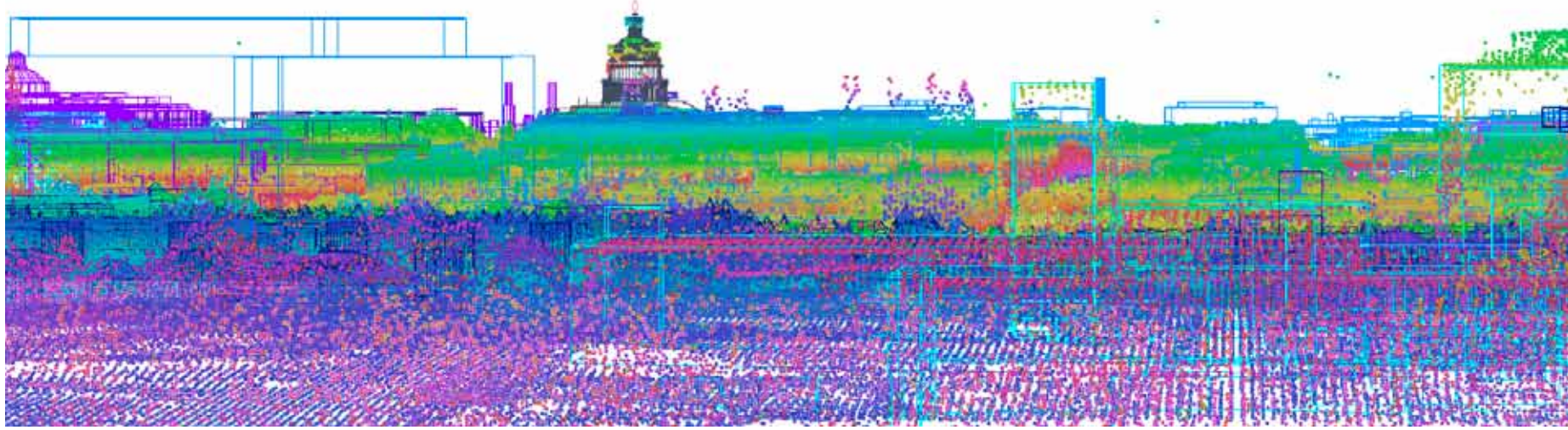
WIREFRAME PERSPECTIVE VIEW TAKEN FROM SCOTT STATUE @ 301'-0" ABOVE SEA LEVEL.

3D MODEL WAS CREATED BY CYBERCITY 3D, INC FOR THE DC GIS DEPARTMENT (OCTO) IN 2009. SBA HAS ADDED THE 3D MODEL OF THE MEDICAL OFFICE BUILDING.



WIREFRAME PERSPECTIVE VIEW TAKEN FROM SCOTT STATUE @ 301'-0" ABOVE SEA LEVEL.

3D MODEL WAS CREATED BY CYBERCITY 3D, INC FOR THE DC GIS DEPARTMENT (OCTO) IN 2009. SBA HAS ADDED THE 3D MODEL OF THE MEDICAL OFFICE BUILDING.



3D model was created by cybercity 3d, inc for the DC GIS Department (OCTO) in 2009. SBA further confirmed the model with lidar data also created by cybercity 3d inc for the DC GIS Department. SBA has added the 3d model of the medical office building.



The aerial image to the right shows the location of Scott Statue. The red line is the view point used for the perspective view studies.

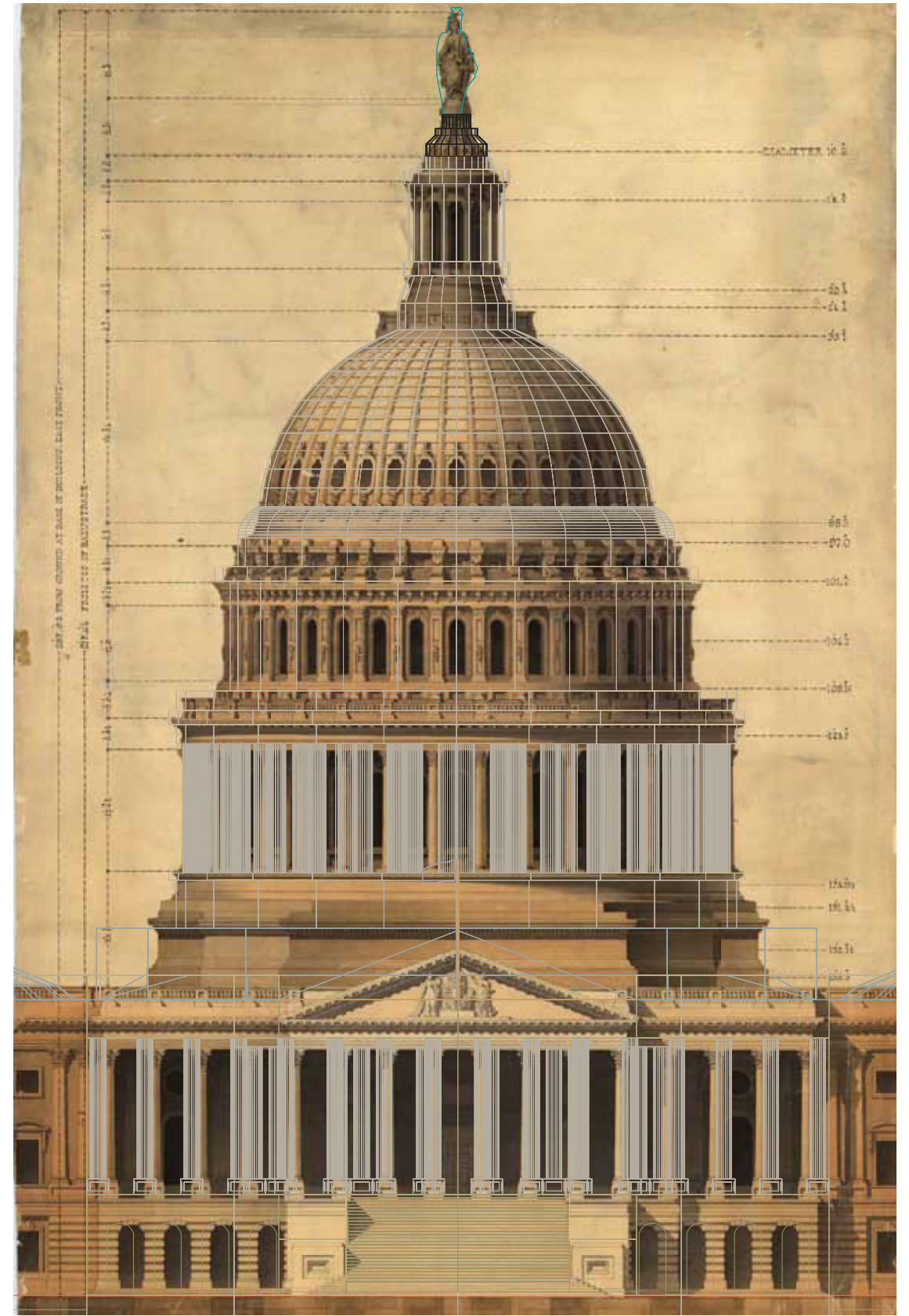
The NGS Data Sheet

See file [ds\data.txt](#) for more information about the datasheet.

```

PROGRAM = datasheet95, VERSION = 8.5
1 National Geodetic Survey, Retrieval Date = OCTOBER 2, 2014
UA0016 *****
UA0016 DESIGNATION - FREEDOM
UA0016 PID - UA0016
UA0016 STATE/COUNTY- DC/DISTRICT OF COLUMBIA
UA0016 COUNTRY - US
UA0016 USGS QUAD - WASHINGTON WEST (1983)
UA0016
UA0016 *CURRENT SURVEY CONTROL
UA0016
UA0016* NAD 83(2011) POSITION- 38 53 23.31608(N) 077 00 32.61474(W) ADJUSTED
UA0016* NAD 83(2011) ELLIP HT- 76.564 (meters) (06/27/12) ADJUSTED
UA0016* NAD 83(2011) EPOCH - 2010.00
UA0016* NAVD 88 ORTHO HEIGHT - 108.7 (meters) 357. (feet) GPS OBS
UA0016
UA0016 NAVD 88 orthometric height was determined with geoid model GEOID93
UA0016 GEOID HEIGHT - -32.49 (meters) GEOID93
UA0016 GEOID HEIGHT - -32.13 (meters) GEOID12A
UA0016 NAD 83(2011) X - 1,117,482.903 (meters) COMP
UA0016 NAD 83(2011) Y - -4,843,844.460 (meters) COMP
UA0016 NAD 83(2011) Z - 3,982,851.119 (meters) COMP
UA0016 LAPLACE CORR - -3.00 (seconds) DEFLEC12A
UA0016
UA0016 FGDC Geospatial Positioning Accuracy Standards (95% confidence, cm)
UA0016 Type Horiz Ellip Dist(km)
UA0016 -----
UA0016 NETWORK 0.97 3.53
UA0016 -----
UA0016 MEDIAN LOCAL ACCURACY AND DIST (015 points) 1.07 3.70 20.06
UA0016 -----
UA0016 NOTE: Click here for information on individual local accuracy
UA0016 values and other accuracy information.
UA0016
UA0016 The horizontal coordinates were established by GPS observations
UA0016 and adjusted by the National Geodetic Survey in June 2012.
UA0016
UA0016 NAD 83(2011) refers to NAD 83 coordinates where the reference
UA0016 frame has been affixed to the stable North American tectonic plate. See
UA0016 NA2011 for more information.
UA0016
UA0016 The horizontal coordinates are valid at the epoch date displayed above
UA0016 which is a decimal equivalence of Year/Month/Day.
UA0016
UA0016 The orthometric height was determined by GPS observations and a
UA0016 high-resolution geoid model.
UA0016
UA0016 Photographs are available for this station.
UA0016
UA0016 The X, Y, and Z were computed from the position and the ellipsoidal ht.
UA0016
UA0016 The Laplace correction was computed from DEFLEC12A derived deflections.
UA0016
UA0016 The ellipsoidal height was determined by GPS observations
UA0016 and is referenced to NAD 83.
    
```

SBA used the NGS data for the survey medallion located at the base of the Statue of Freedom to locate the elevation of the US Capitol.



3D model created by Cybercity 3d, inc for the DC GIS Department (OCTO) in 2009 does not include the US Capitol for security reasons. SBA has compiled historic drawings of the US Capitol and used them to build a 3d model of the Capitol. The gray lines indicate the model overlaid onto the historic drawings.