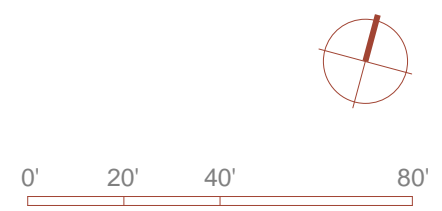


1 1st Floor
1" = 40'-0"



1st Floor Plan

Congress Heights

Square 5914, LLC

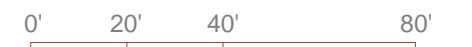
maurice walters | architect

ZONING COMMISSION

District of Columbia
CASE NO. 16-16
EXHIBIT NO. 52D2



① Office 2nd Floor
1" = 40'-0"

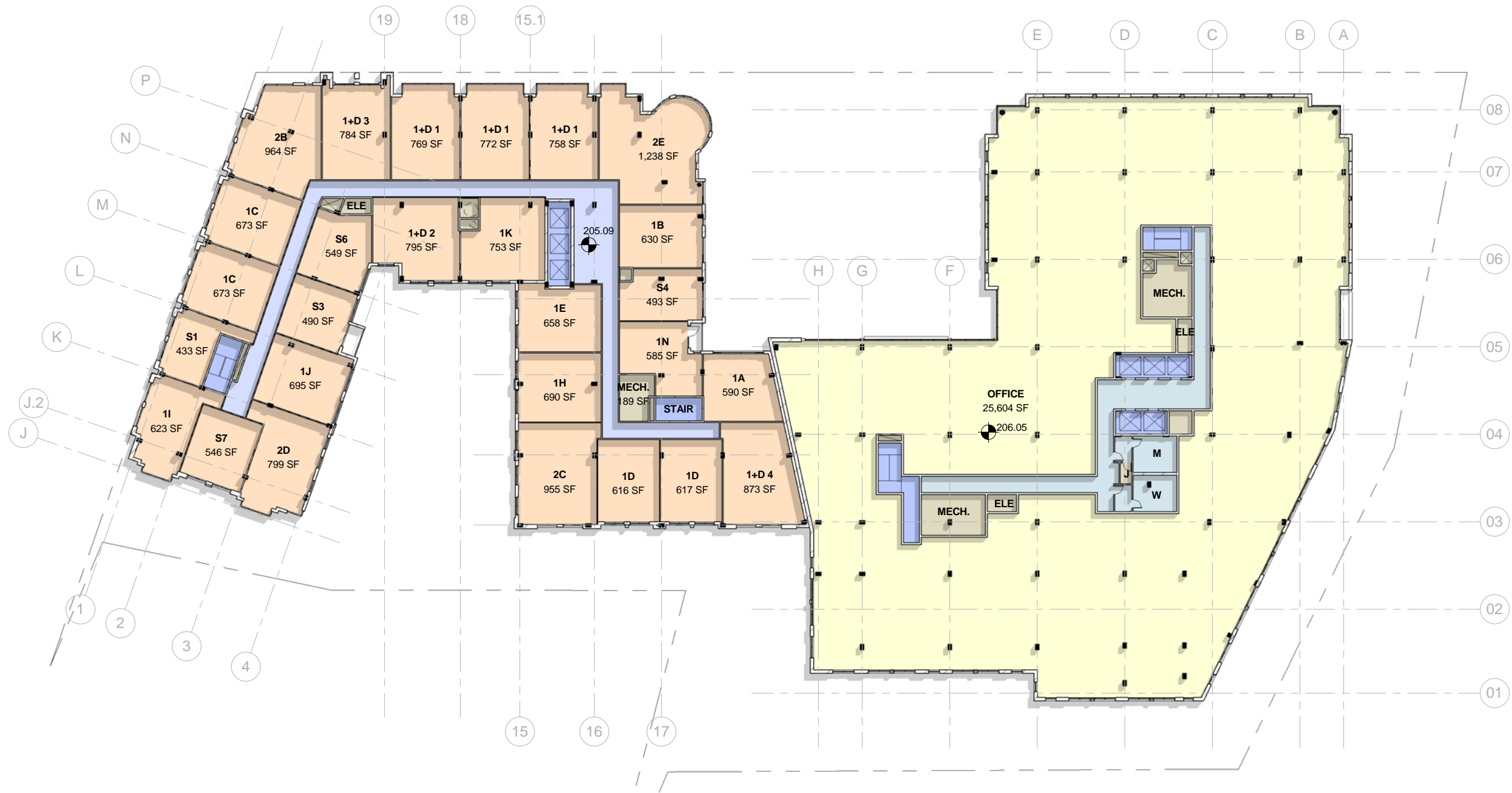


2nd Floor Plan

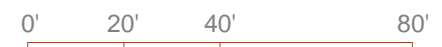
Congress Heights

Square 5914, LLC

maurice **walters** | architect



① 3rd Floor (Res. & Office)
1" = 40'-0"

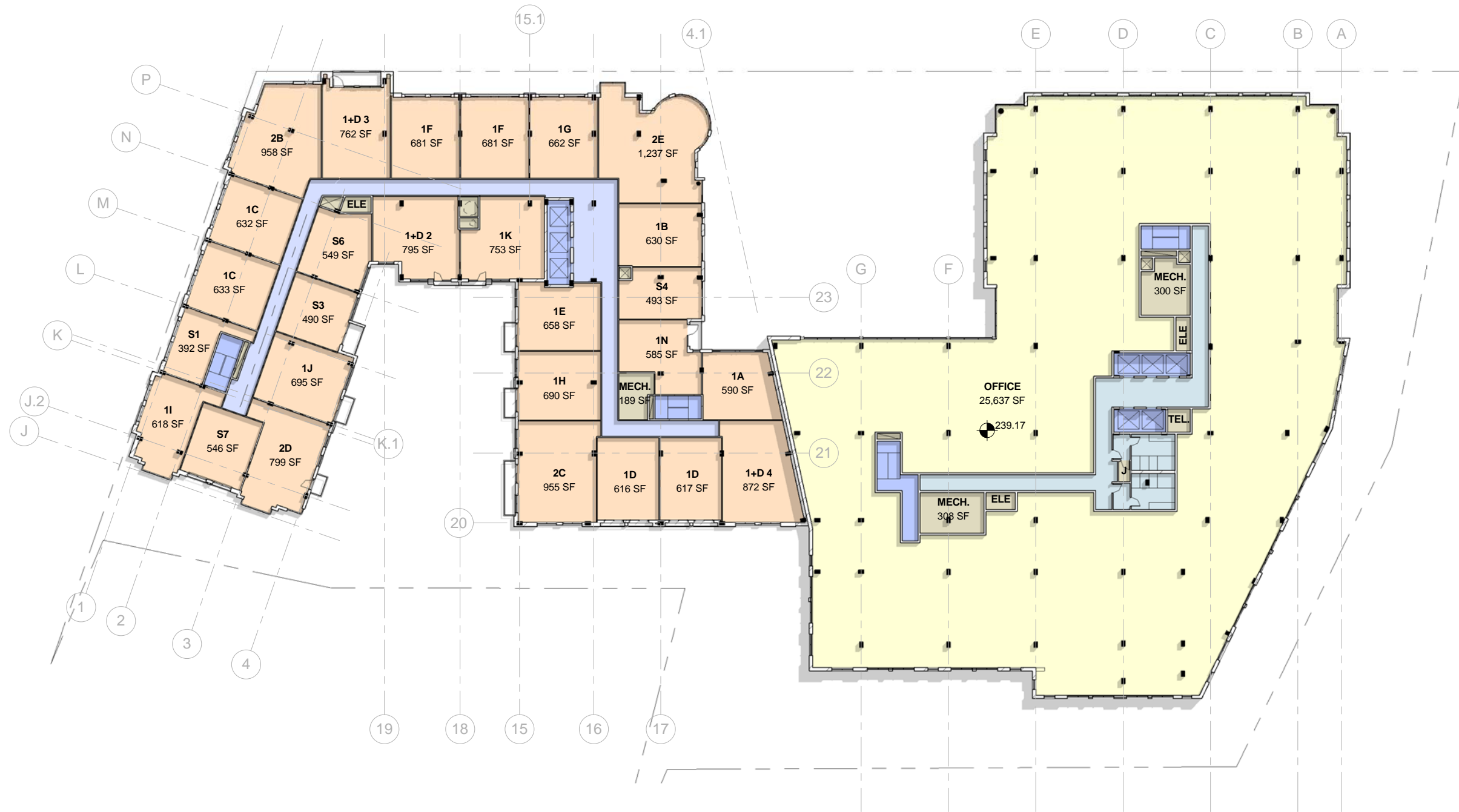


3rd Floor Plan

Congress Heights

Square 5914, LLC

maurice **walters** | architect



① Typical Floor Plan
1" = 40'-0"

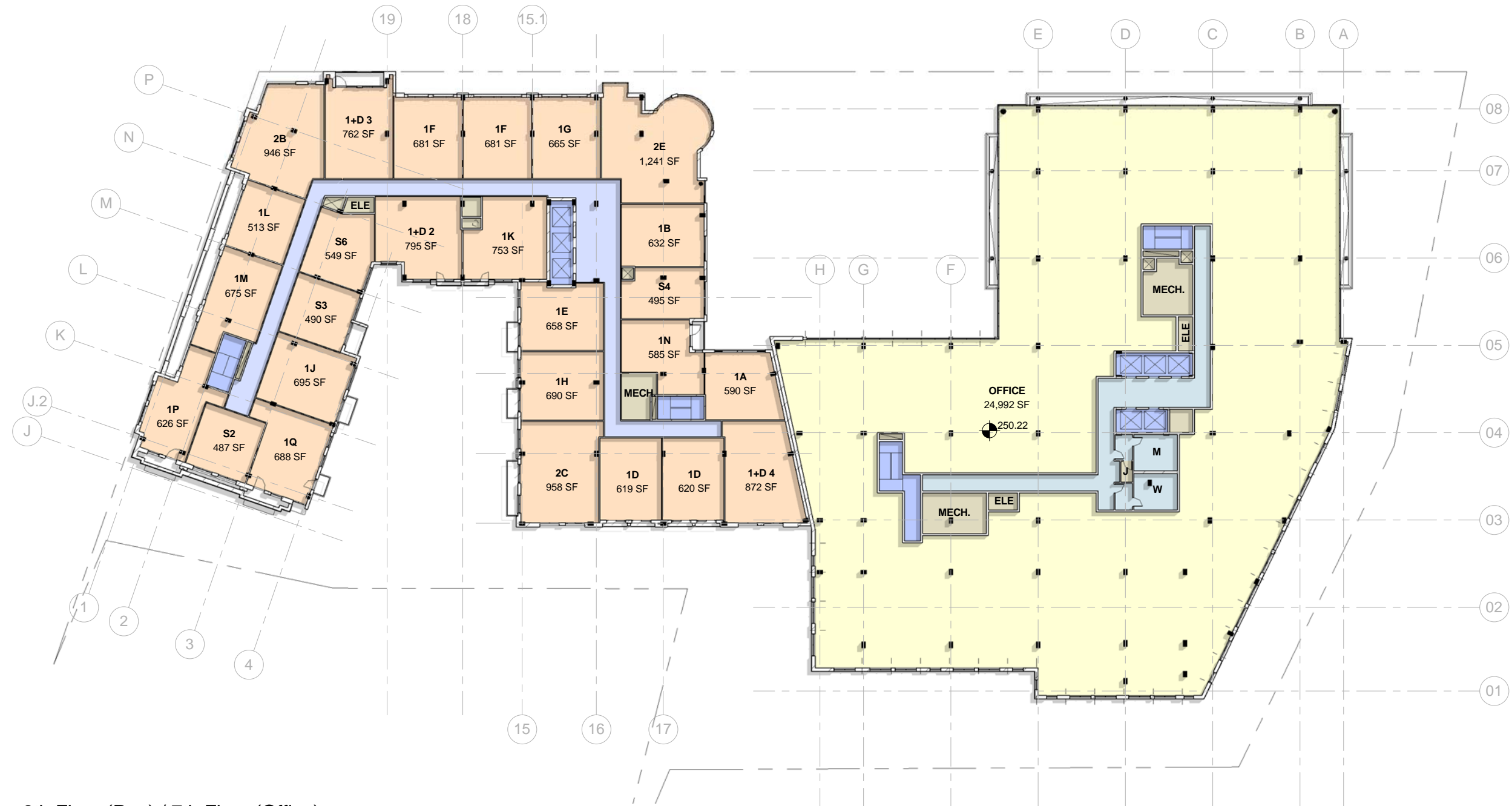


Typical Floor

Congress Heights

Square 5914, LLC

mauricewalters | architect



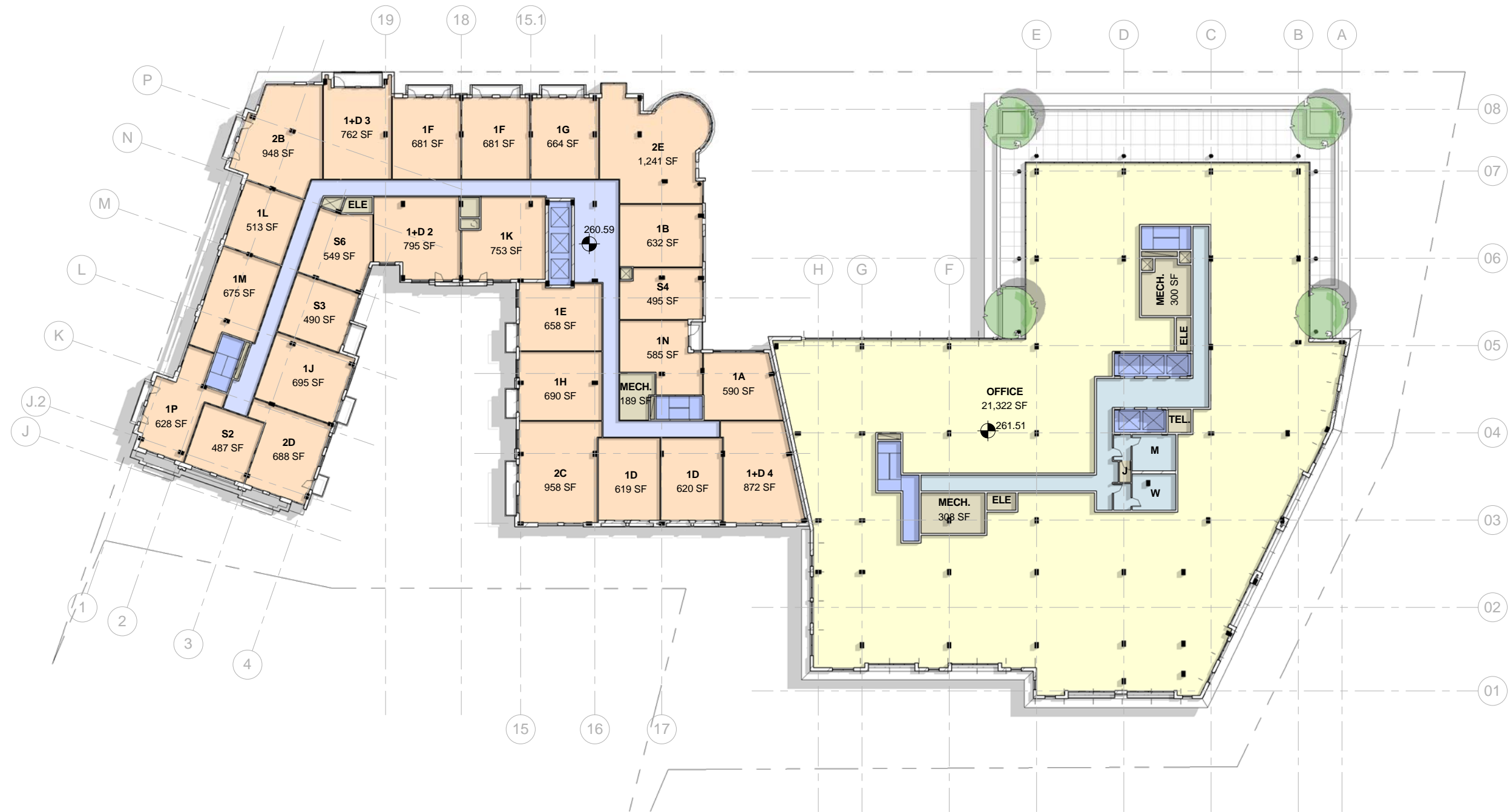
① 8th Floor (Res) / 7th Floor (Office)
1" = 40'-0"

8th Floor (Res) / 7th Floor (Office)

Congress Heights

Square 5914, LLC

maurice **walters** | architect



① 9th Floor (Res) / 8th Floor (Office)
1" = 40'-0"

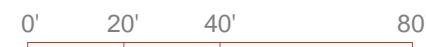
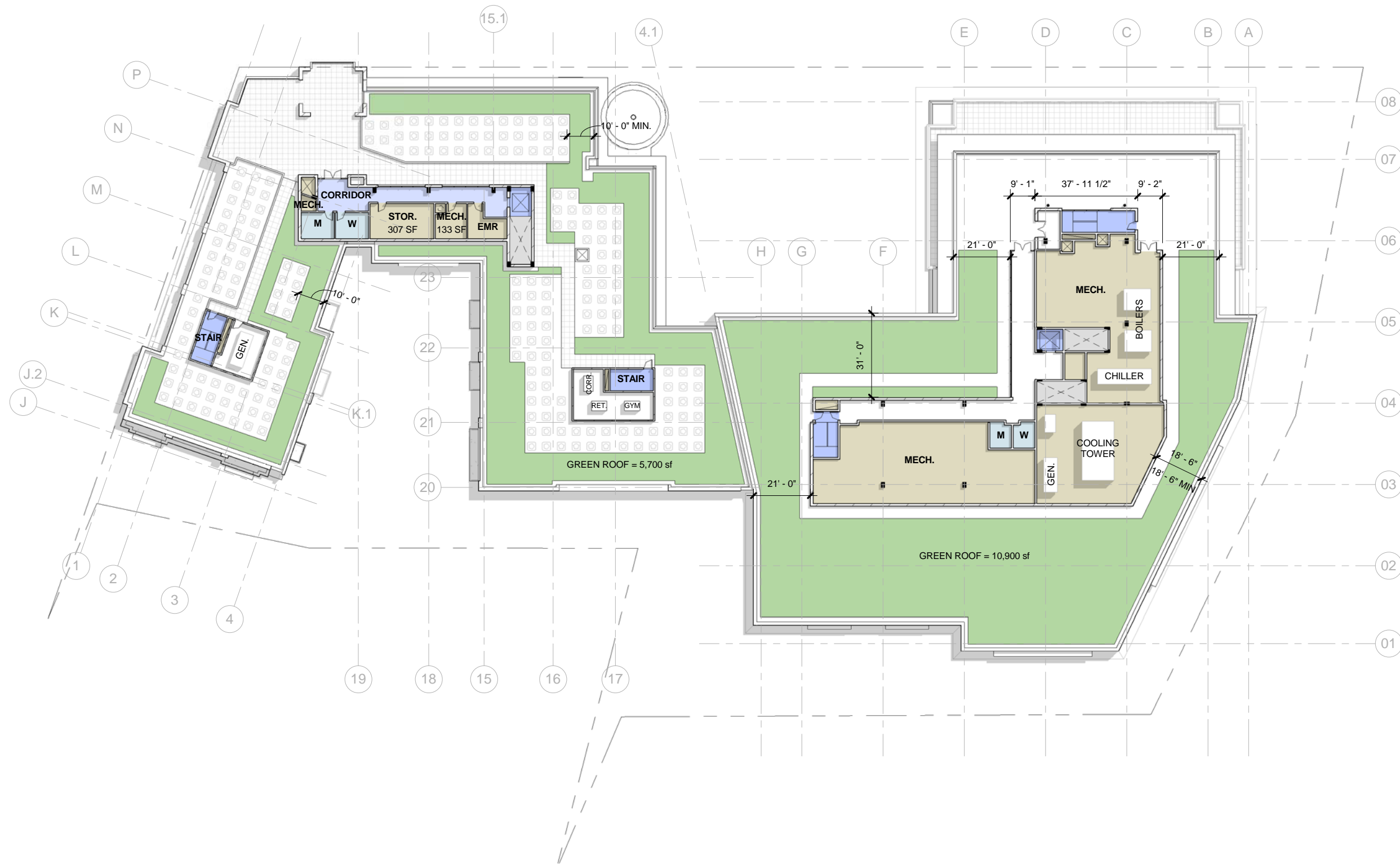


9th Floor (Res) / 8th Floor (Office)

Congress Heights

Square 5914, LLC

maurice **walters** | architect



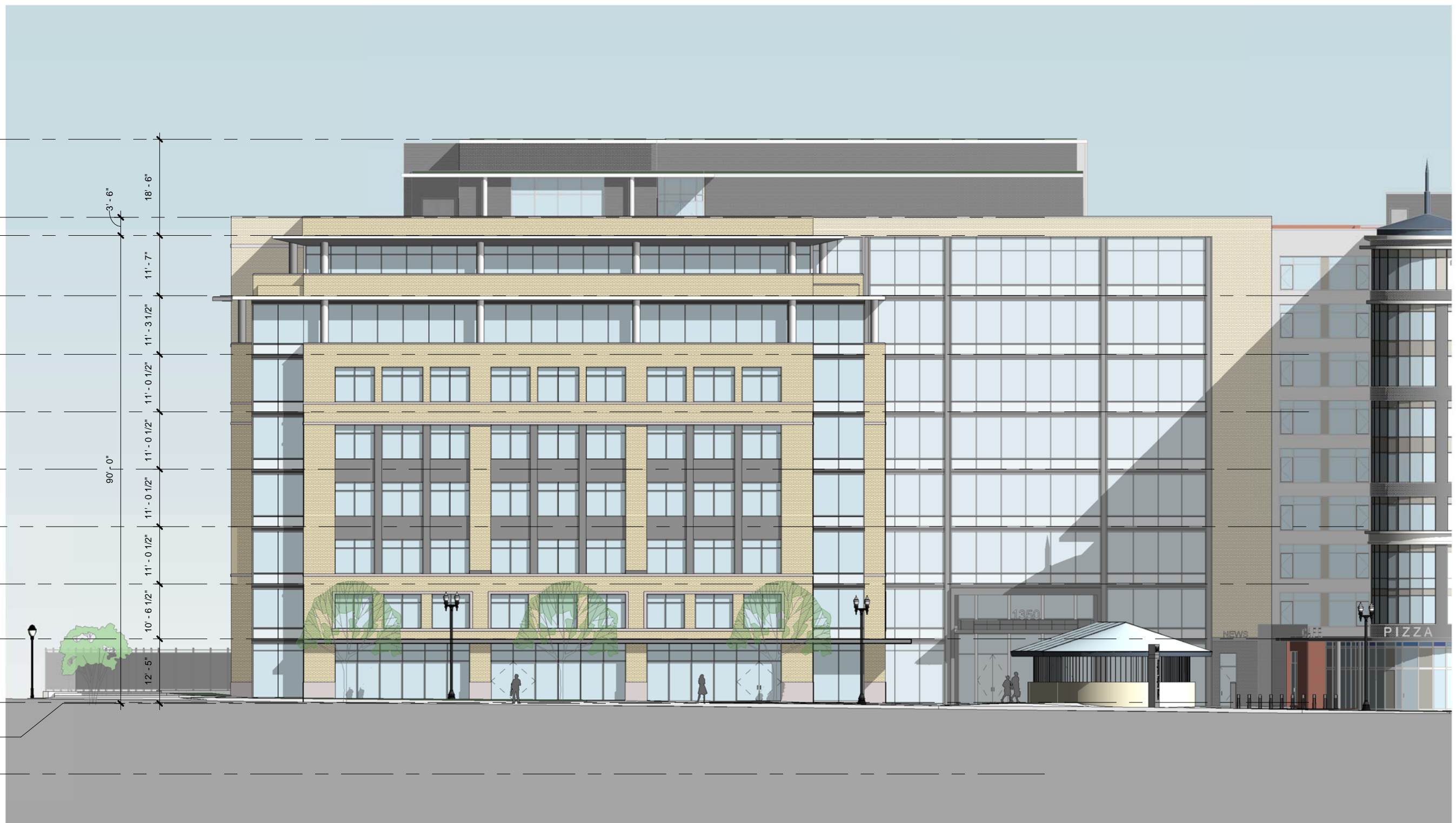
Roof Plan

Congress Heights

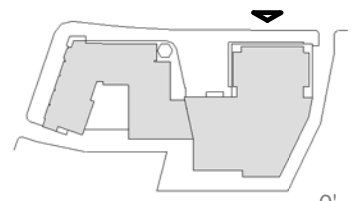
Square 5914, LLC

mauricewalters | architect

- T.O. Penthouse
291' - 7 3/32"
- T.O. Parapet
276' - 7 3/32"
- Office Roof
273' - 1 3/32"
- Office 8th Floor
261' - 6 3/32"
- Office 7th Floor
250' - 2 19/32"
- Office 6th Floor
239' - 2 3/32"
- Office 5th Floor
228' - 1 19/32"
- Office 4th Floor
217' - 1 3/32"
- Office 3rd Floor
206' - 0 19/32"
- Office 2nd Floor
195' - 6 3/32"
- Office 1st Floor
183' - 3 1/4"
- Meas. Pt. (Office)
183' - 1 3/32"
- Garage
169' - 6"



① North Elevation - Office
1" = 20'-0"



0' 10' 20' 40'

North Elevation - Office
Congress Heights
Square 5914, LLC

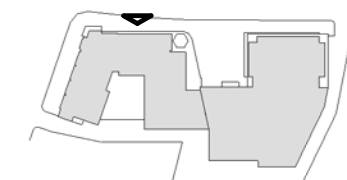
mauricewalters | architect



North Elevation - Residential

Congress Heights

Square 5914, LLC



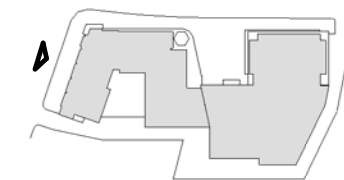
mauricewalters | architect



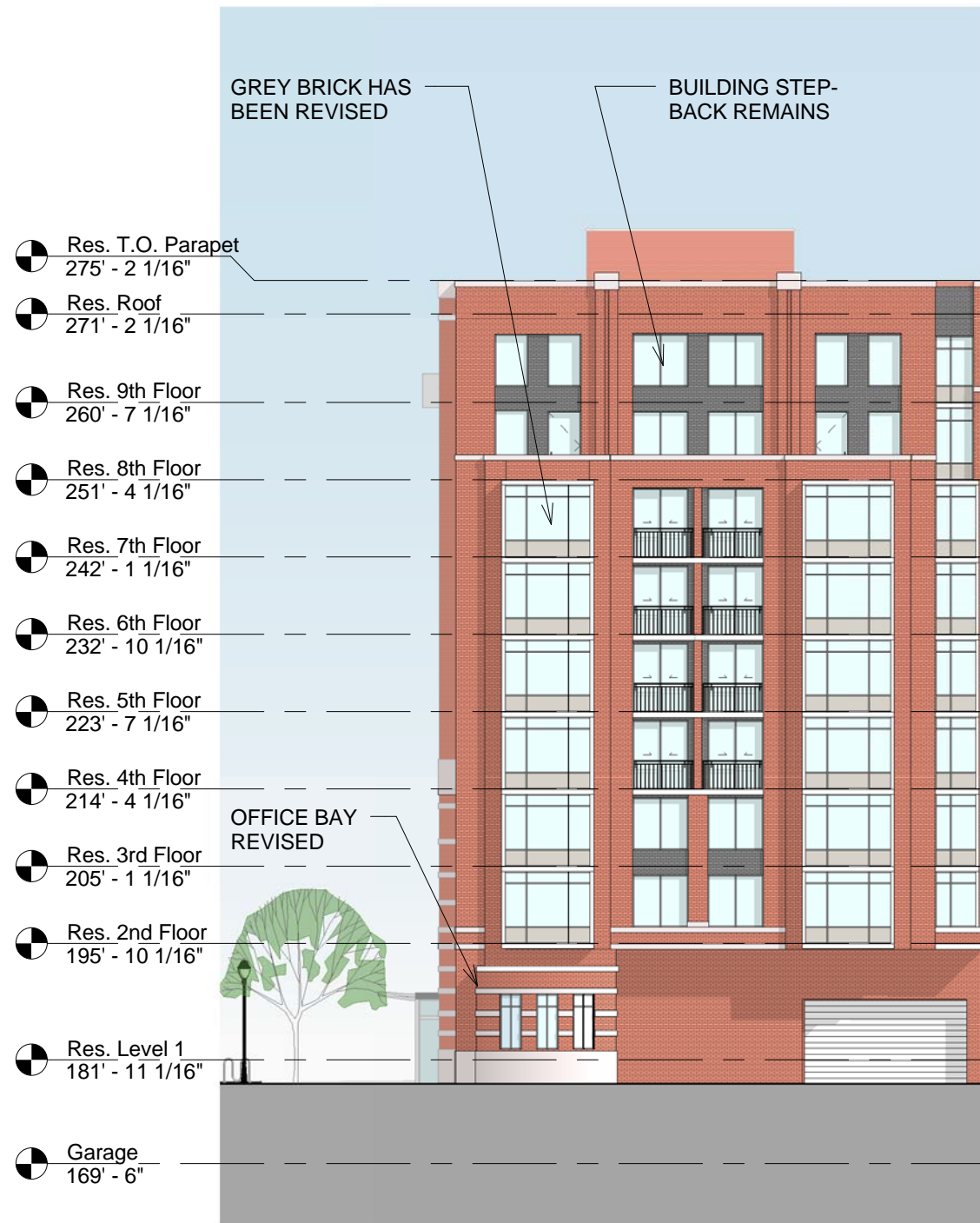
West Elevation

Congress Heights

Square 5914, LLC



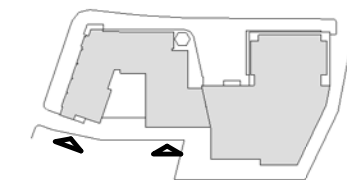
maurice walters | architect



① South Residential Elevation - West
1" = 20'-0"



② South Residential Elevation - East
1" = 20'-0"



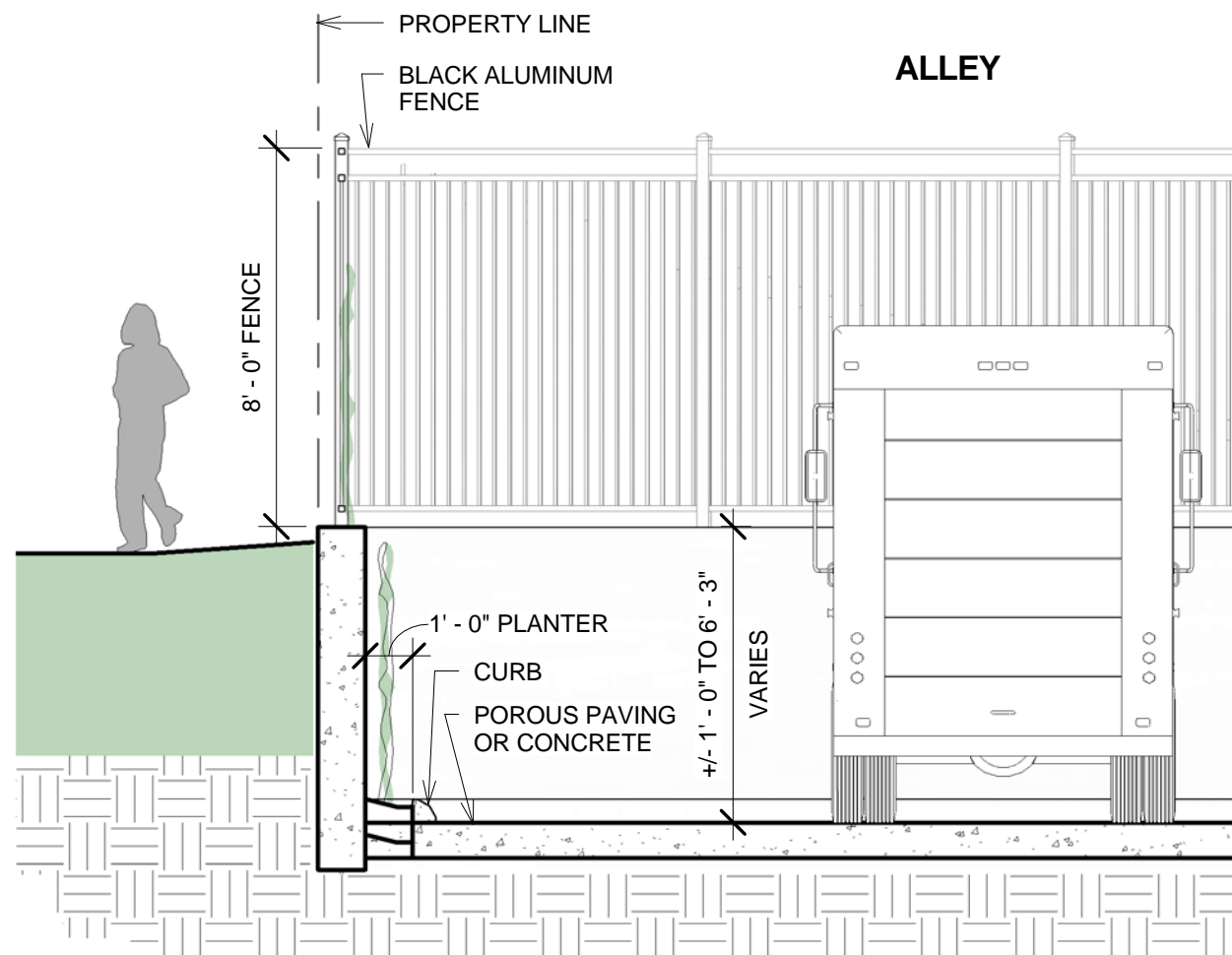
0' 10' 20' 40'

Residential Elevations - South

Congress Heights

Square 5914, LLC

mauricewalters | architect



① Section through Retaining Wall at Alley
1/4" = 1'-0"

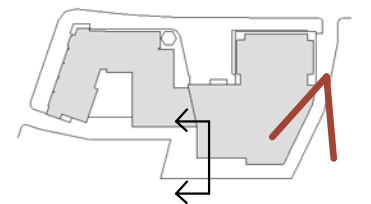


View at East Alley - Office Building

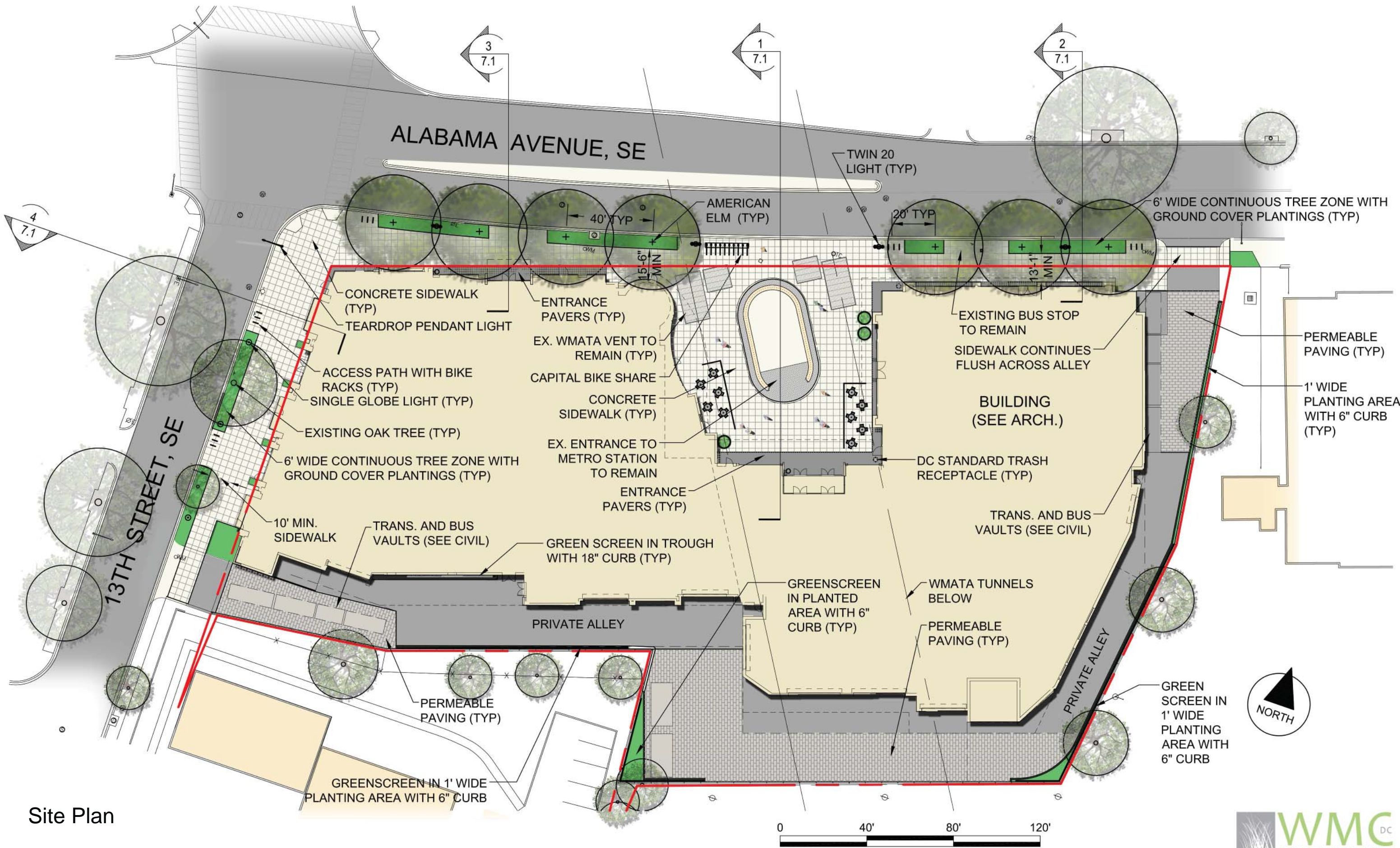
Retaining Wall Detail

Congress Heights

Square 5914, LLC



maurice **walters** | architect



Site Plan

Congress Heights
Square 5914, LLC





SCORED CONCRETE SIDEWALK



ENTRANCE PAVERS



CONTINUOUS TREE PLANTING ZONE WITH METAL FENCE



1' WIDE PLANTING AREA WITH GREEN SCREEN



CAPITAL BIKESHARE STATION



DC STANDARD BIKE RACKS



SINGLE GLOBE LIGHT & DC STANDARD TRASH RECEPTACLE



TWIN 20 DOUBLE GLOBE LIGHT



PERMEABLE PAVING

Design Palette - Streetscape and Green Alley

Congress Heights

Square 5914, LLC