

CONGRESS HEIGHTS METRO

SOUTHEAST, WASHINGTON, DC

CONSOLIDATED PUD APPLICATION

CLIENT
SQUARE 5914, LLC

LAND USE COUNSEL
GOULSTON & STORRS, LLP

ARCHITECT
MAURICE WALTERS ARCHITECT, PC

LANDSCAPE ARCHITECT / CIVIL ENGINEER
WILES MENSCH CORPORATION

TRAFFIC CONSULTANT
WELLS + ASSOCIATES



PUD SUBMISSION
PUD RESUBMISSION

APRIL 25, 2013
JULY 31, 2014



Rendering - Northwest Perspective

Congress Heights

Square 5914, LLC



maurice walters | architect



Rendering - Office from across Alabama

Congress Heights

Square 5914, LLC



maurice walters | architect

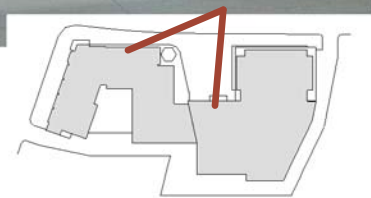


Metro Plaza - Existing & Proposed

Congress Heights

Square 5914, LLC

EXISTING
CONDITIONS



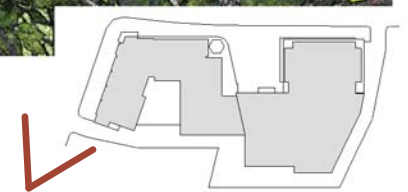
maurice **walters** | architect



Perspective View - 13th St. looking north

Congress Heights

Square 5914, LLC



maurice **walters** | architect



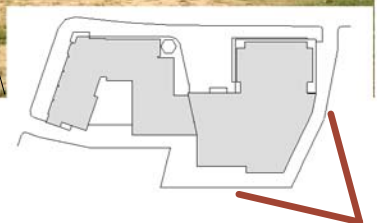
BUILDING HEIGHT
LOWERED; RELATIONSHIP
TO CONTEXT SHOWN

View from Southeast (Malcolm X)

Congress Heights

Square 5914, LLC

EXISTING
CONDITIONS



maurice **walters** | architect

