

Open Court - 16.25' width

Open Court - 1' width

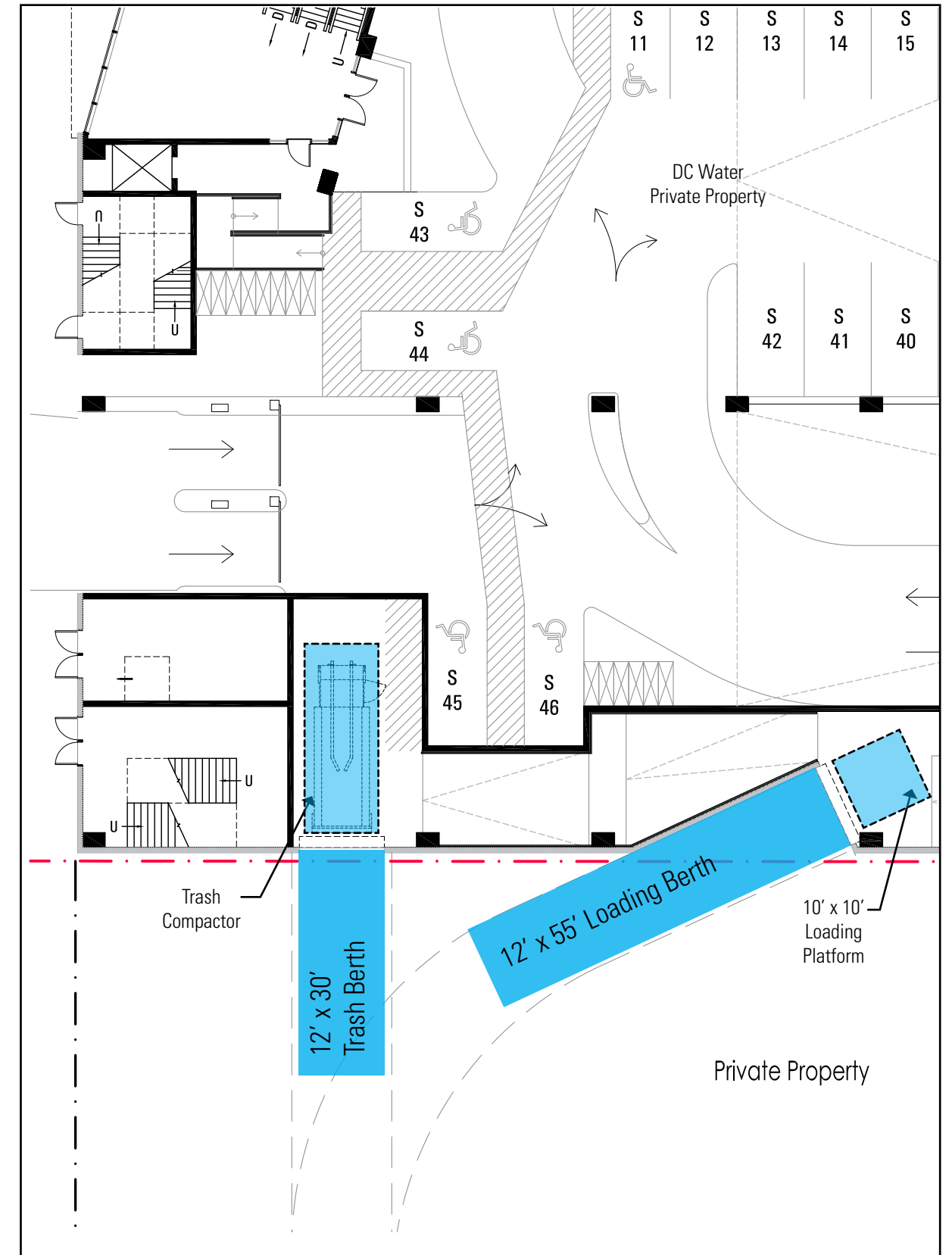
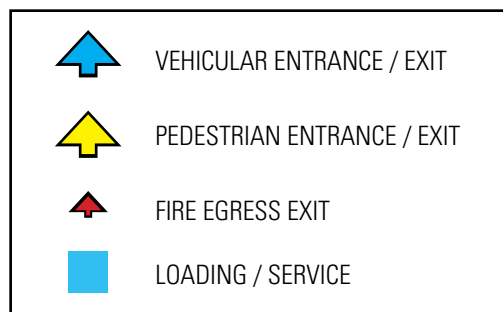
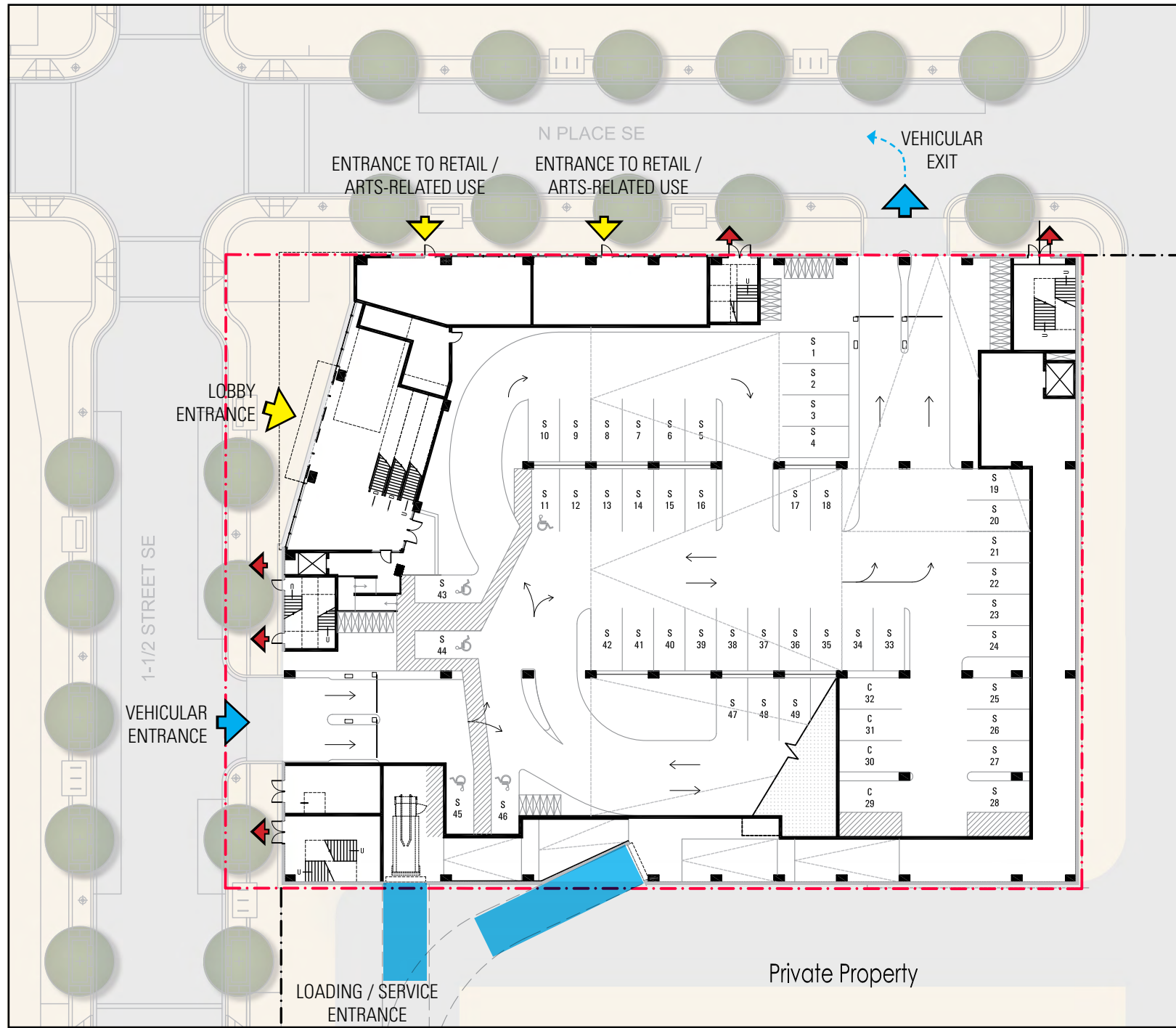
Closed Court - 1' width

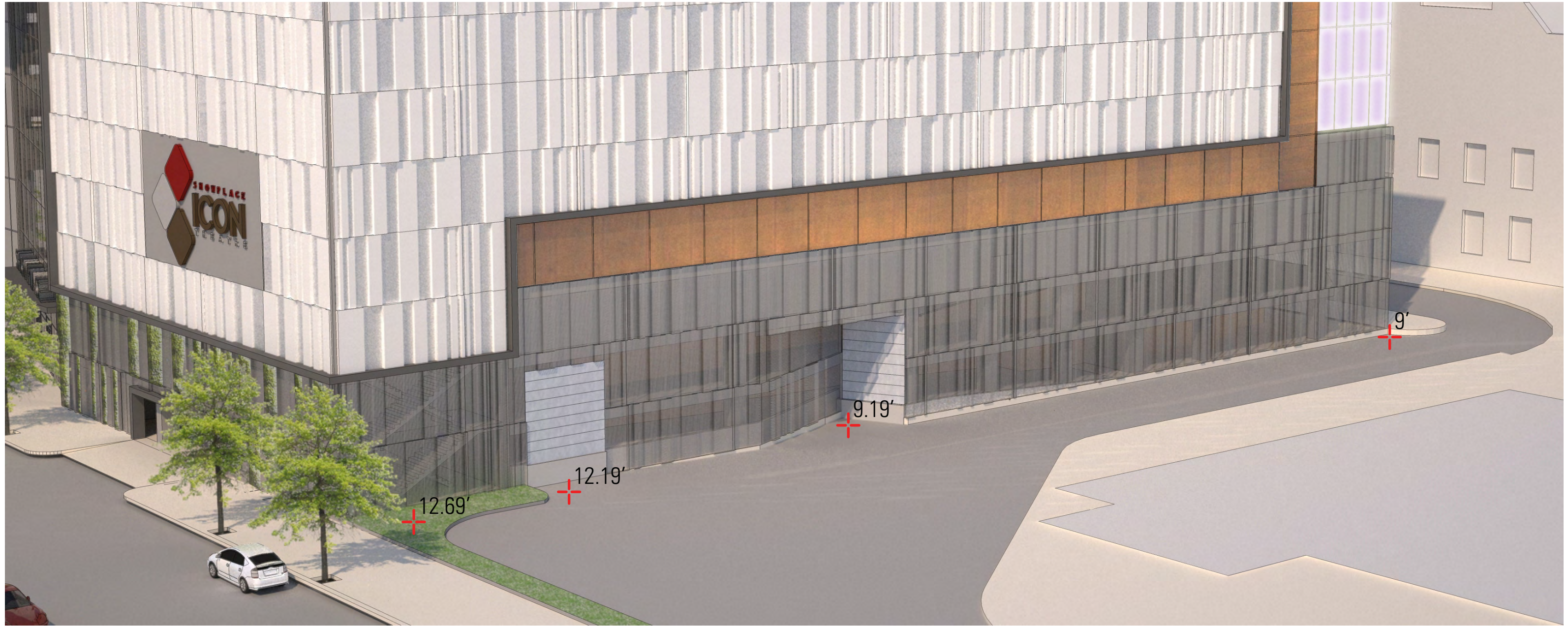
COURT WIDTH
 REQUIRED WIDTH = 20.83'
 (2.5" PER FOOT OF HEIGHT)

PROVIDED WIDTH:
 1 OPEN COURT @ 16.25' (REQUIRES RELIEF)
 1 OPEN COURT @ 1' (REQUIRES RELIEF)
 1 CLOSED COURT @ 1' (REQUIRES RELIEF)

COURT AREA (CLOSED COURT ONLY)
 REQUIRED AREA = 867.78 SF
 PROVIDED AREA = 228.5 SF (REQUIRES RELIEF)

Private Property







F1 Block Cinema

Forest City | PUD Public Hearing Package 08.29.2013

Rendered Perspective - NW

A-20





F1 Block Cinema

Forest City | PUD Public Hearing Package 08.29.2013

Rendered Perspective - SE

A-21





F1 Block Cinema

Forest City | PUD Public Hearing Package 08.29.2013

Rendered Perspective - N

A-22





F1 Block Cinema

Forest City | PUD Public Hearing Package 08.29.2013

Illustrative Elevation - N

A-23





Metal Mesh Panels-
CR Laurence - City Center, Las Vegas



Dimensional Metal Panel -
Alucobond - Uppsala Congress Hall, Sweden



Extruded Metal Cornice



Side-illuminated Fritted Glass Art
Wall



Glass Canopy held with Spider-Fitting Ribs

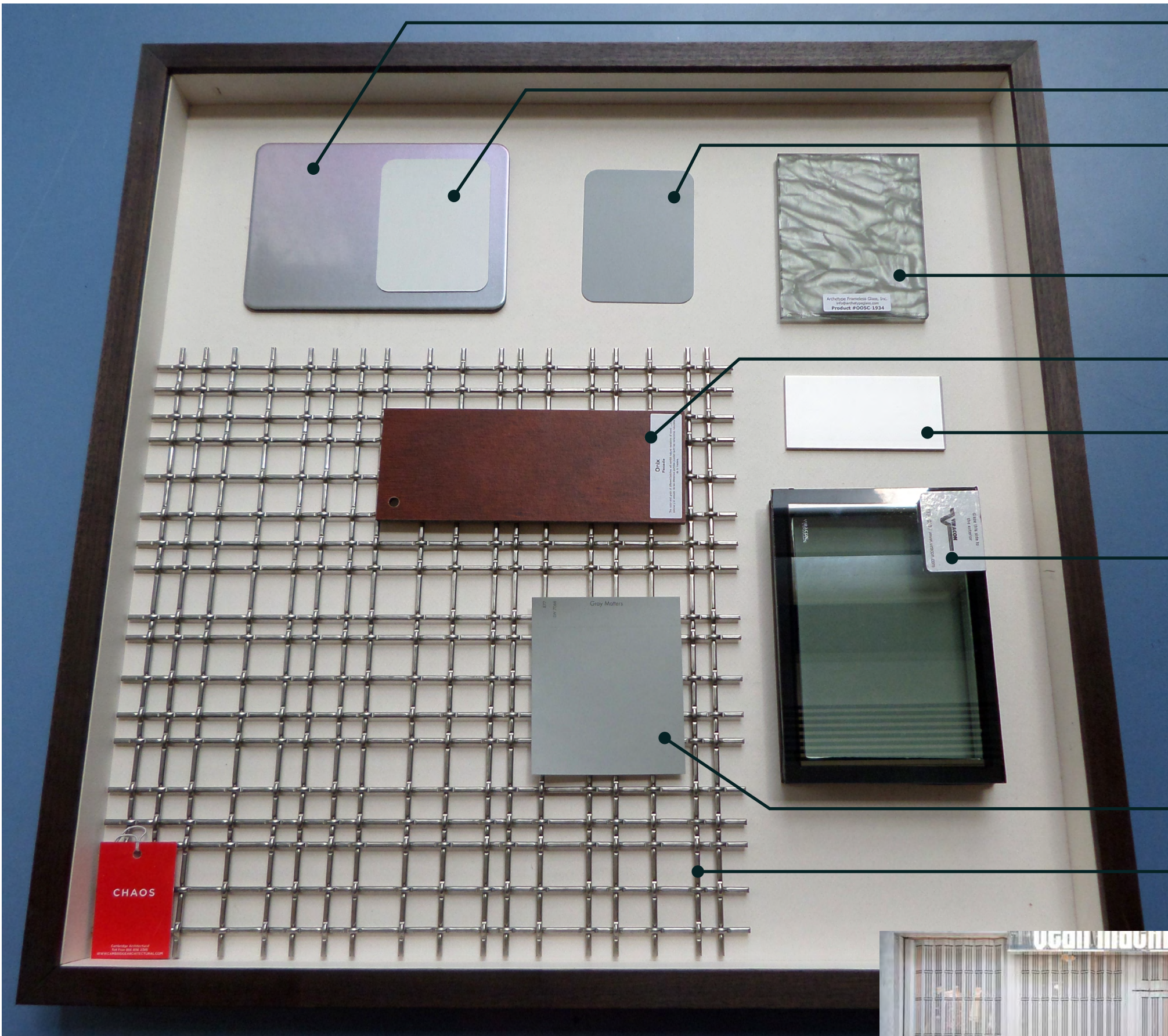
F1 Block Cinema

Forest City | PUD Public Hearing Package 08.29.2013

Material Selections

A-24





- Dimensional Metal Panel System - Alucobond Composite Panel Spectra-Sakura
- Dimensional Metal Panel System - Alucobond Composite Panel Bone White Cool
- Extruded Metal Cornice - Alucobond Composite Panel Cadet Gray Cool
- Side Illuminated Glass Panel - Archetype Frameless Glass #005C-1934
- Accent Panel - Parklex Facade Onix
- Curtain Wall Framing - Kawneer Clear No. 14 and 17
- Curtain Wall Glass - Viracon Solarscreen Radiant Low-E Glass VRE1-46
- Door and Framing Paint Color - Sherwin Williams Paint Gray Matters SW7066
- Steel Framed Metal Mesh - Cambridge Architectural Metal Chaos Metal Fabric - 50% Open
- Garage Security Grille - Cornell Iron Works VistaPane Side-folding Closure Model ESC-31

