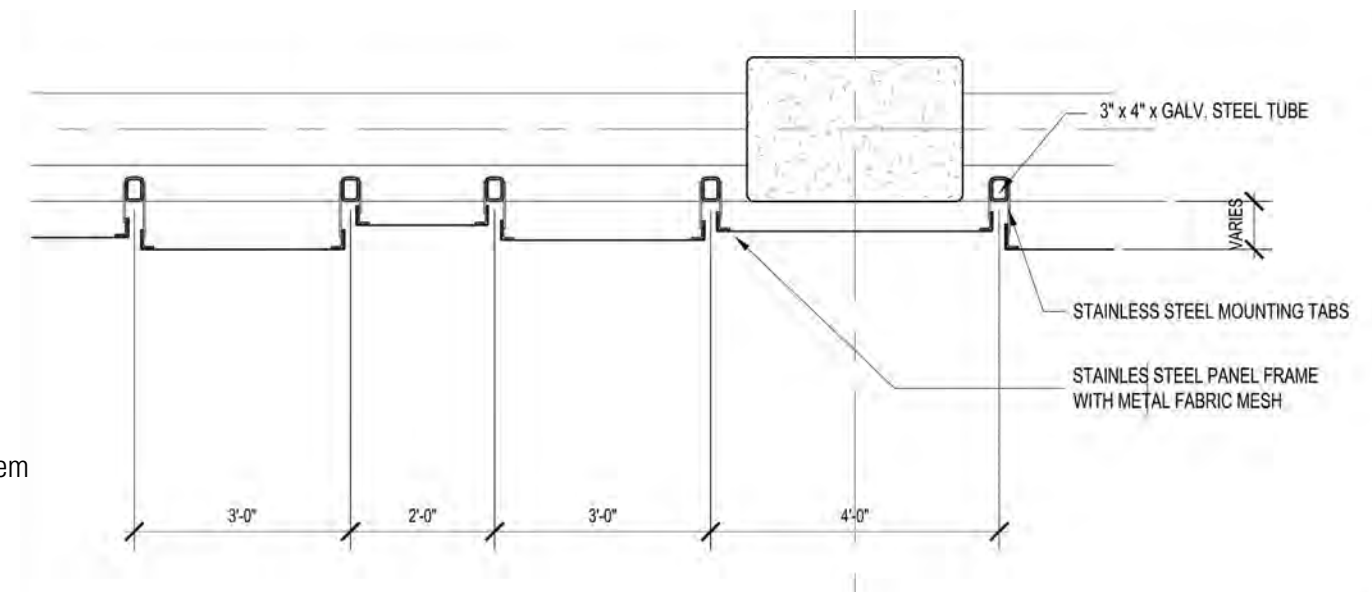
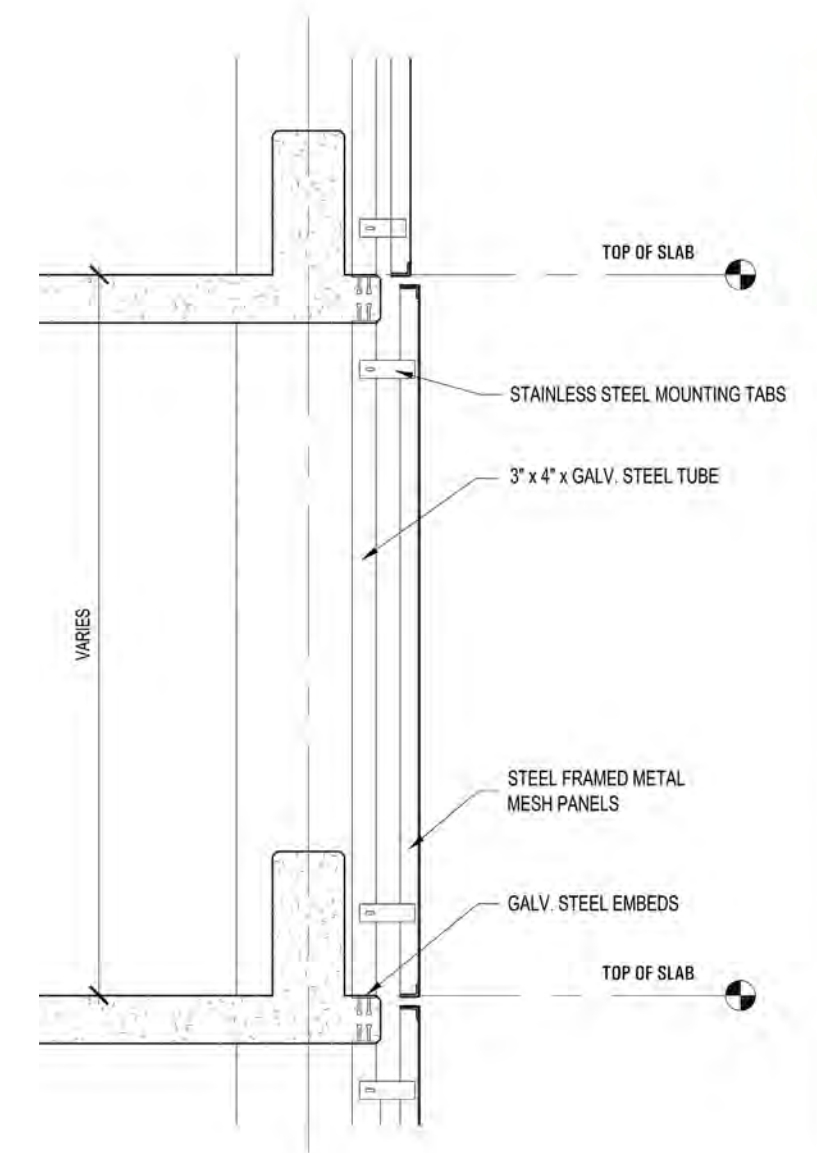
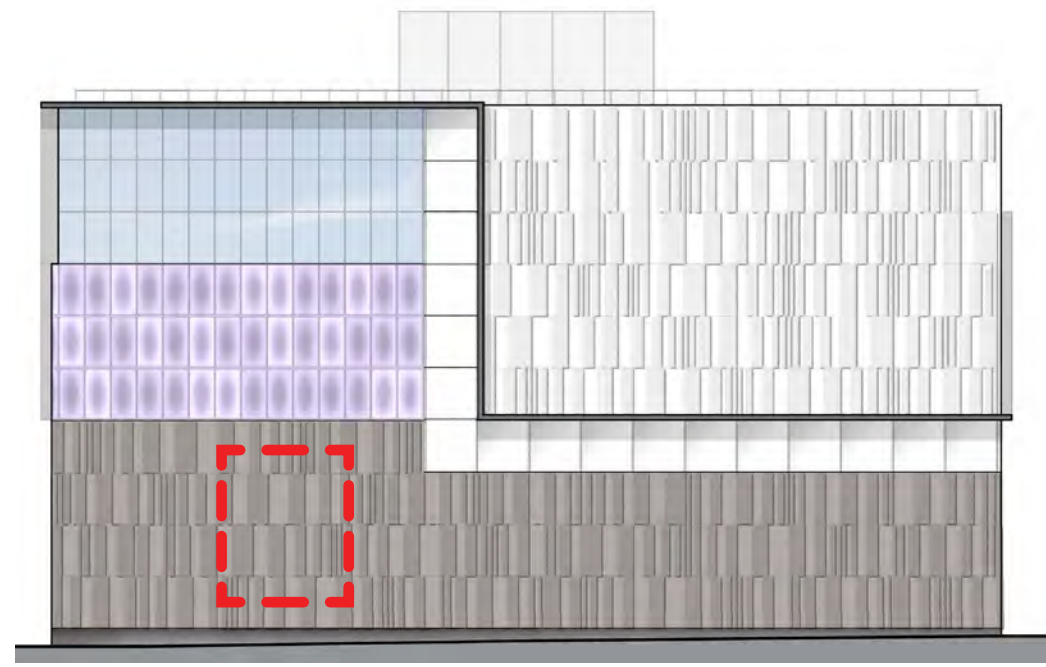
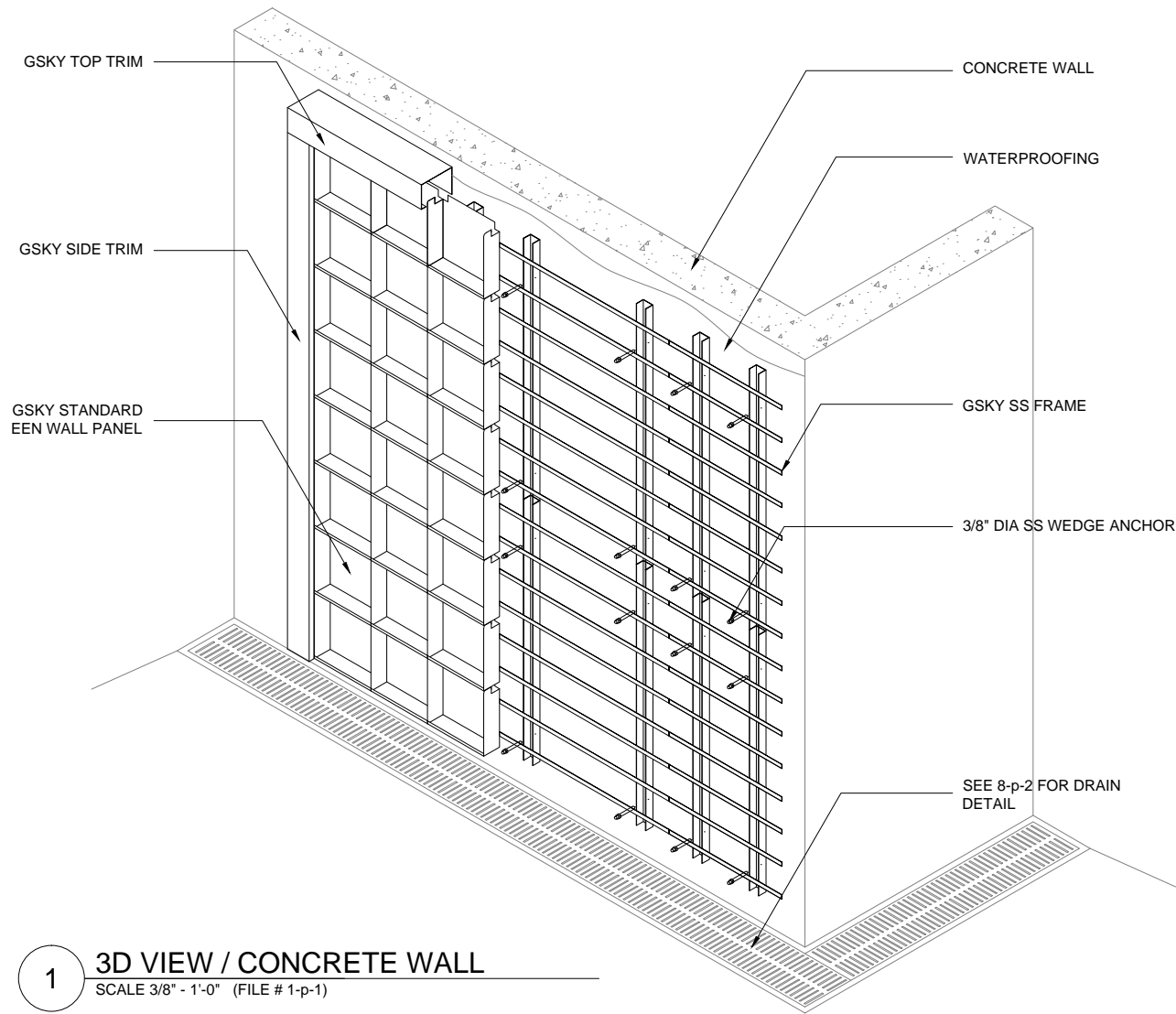
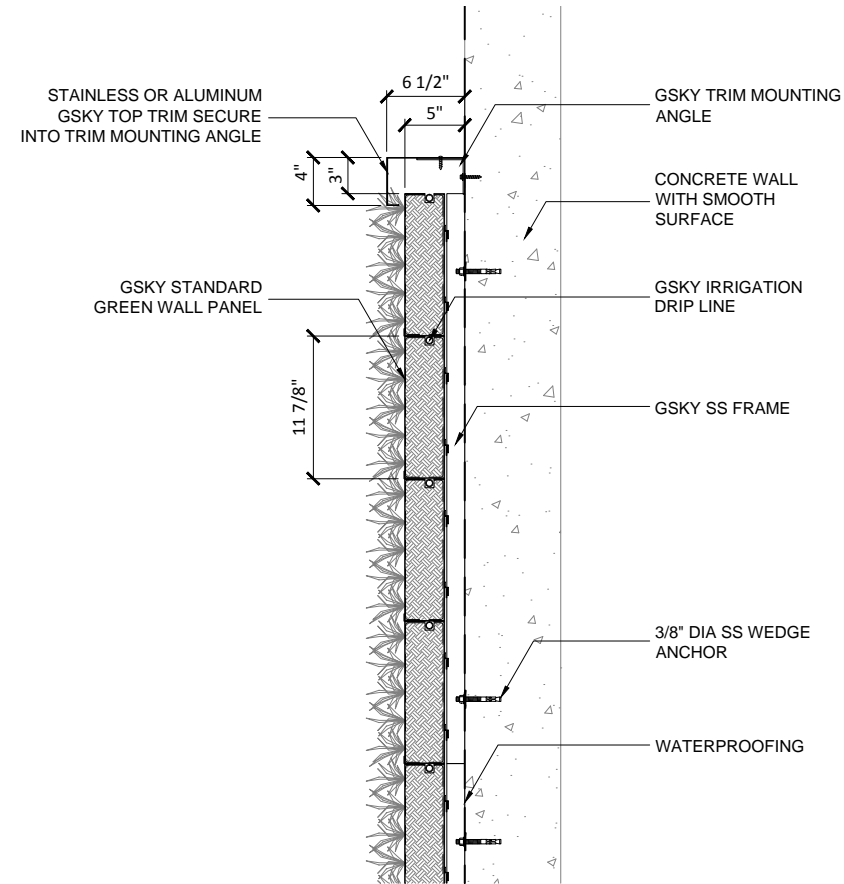


Cambridge Architectural
Chaos Metal Fabric
Tableau Attachment System

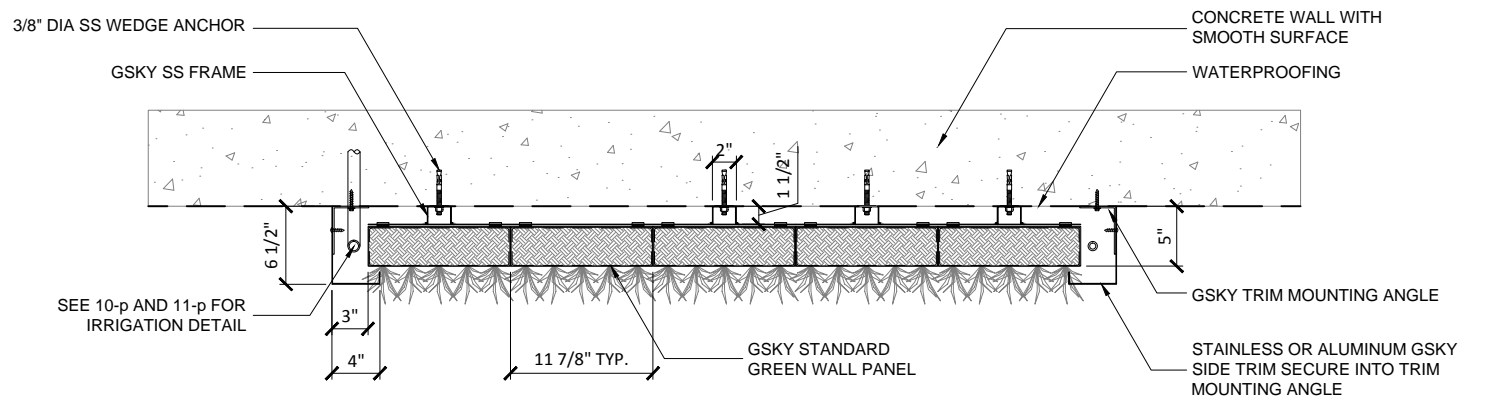
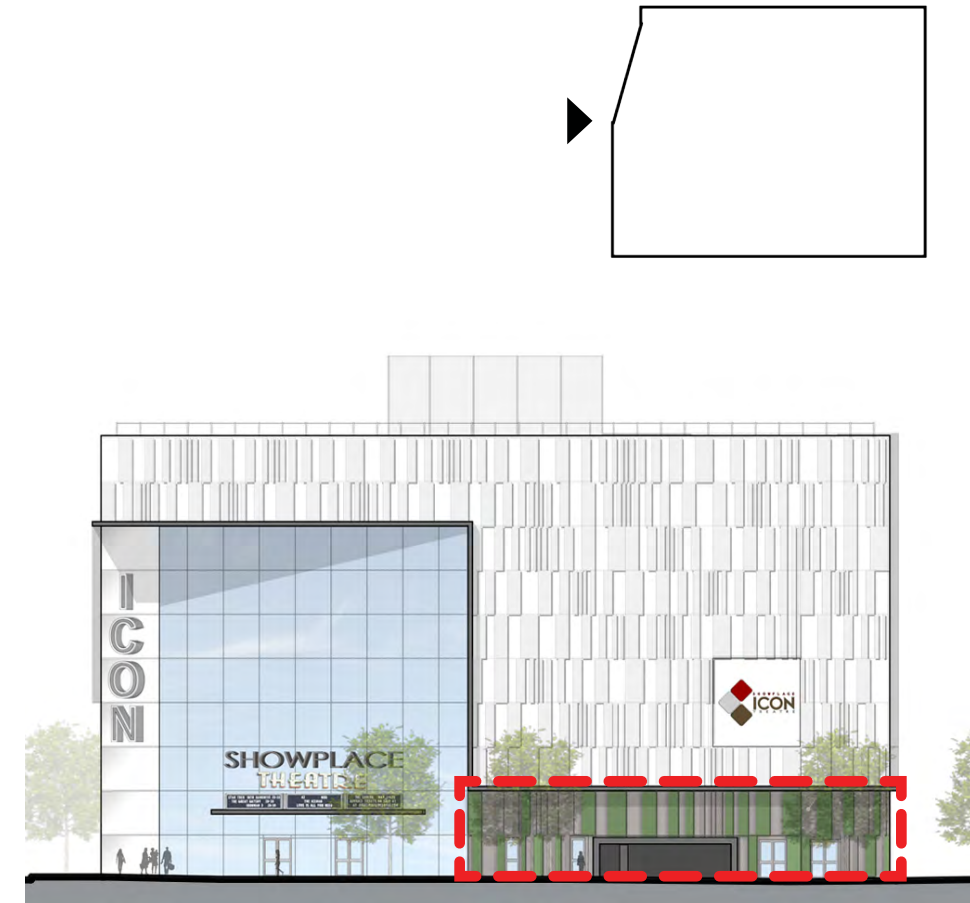




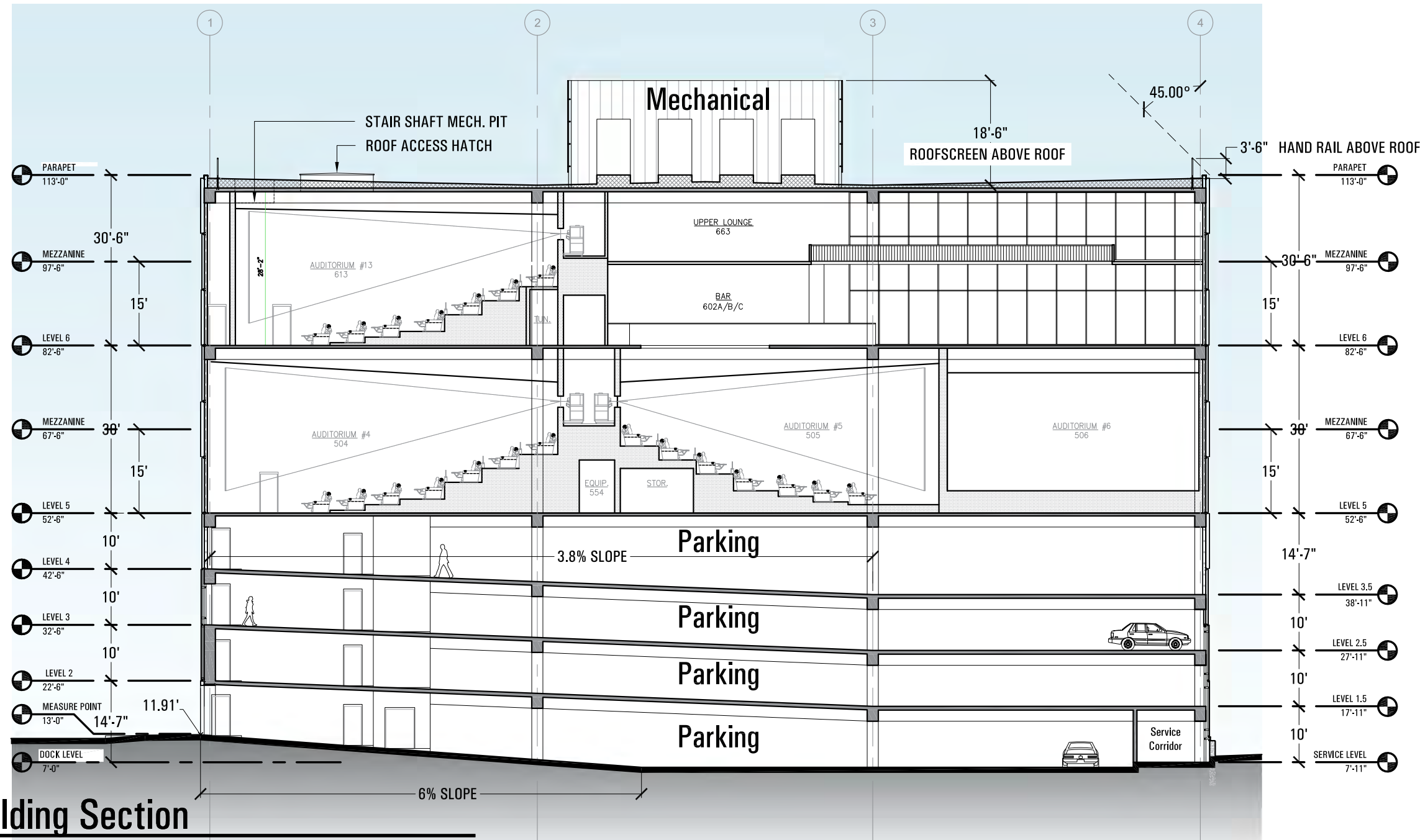
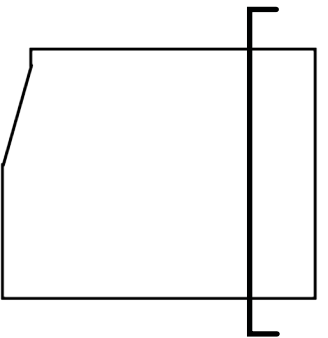
1 3D VIEW / CONCRETE WALL
SCALE 3/8" - 1'-0" (FILE # 1-p-1)



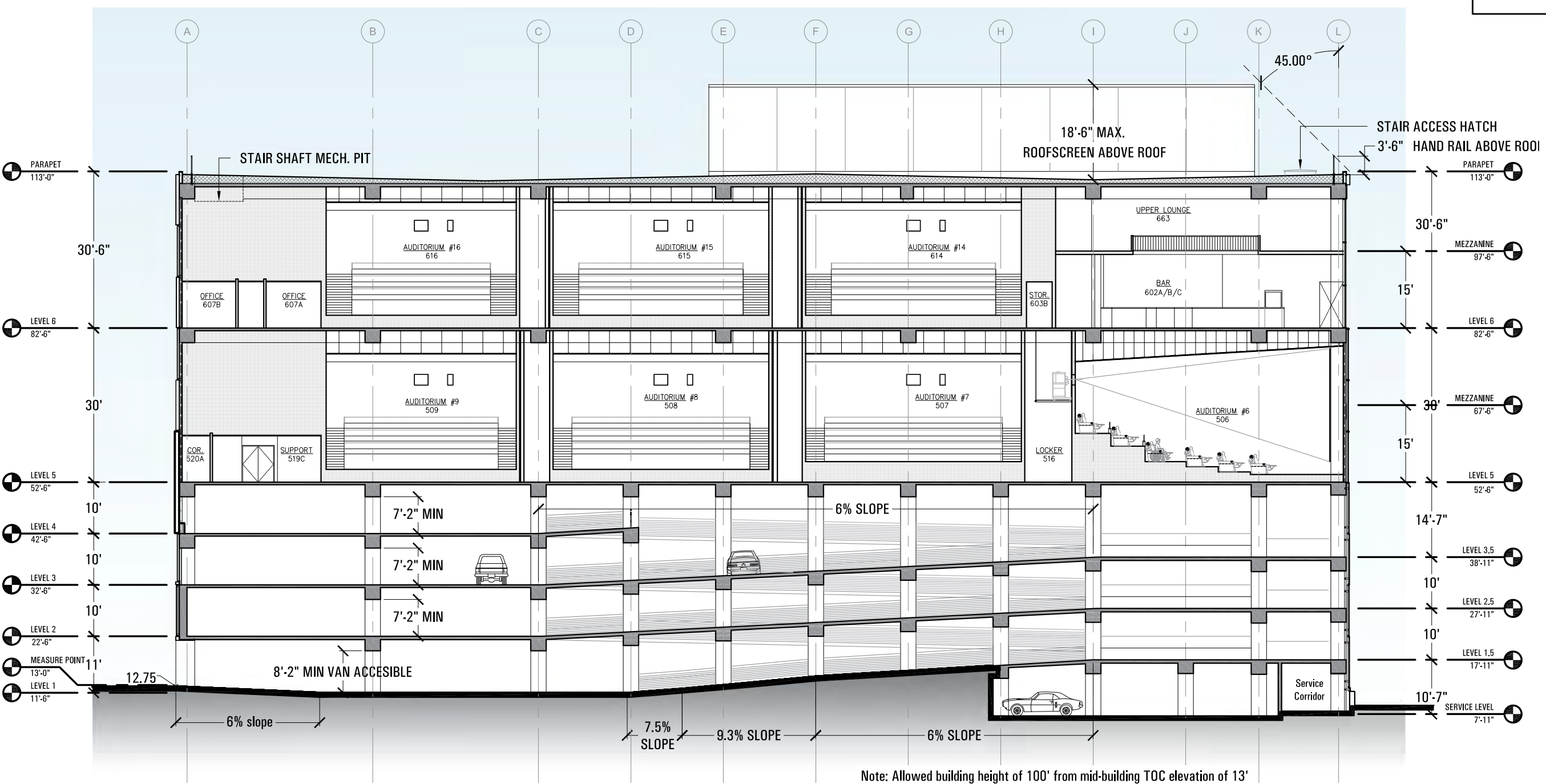
3 SECTION DETAIL / CONCRETE WALL
SCALE 3/4" - 1'-0" (FILE # 1-p-3)



2 PLAN DETAIL / CONCRETE WALL
SCALE 3/4" - 1'-0" (FILE # 1-p-2)

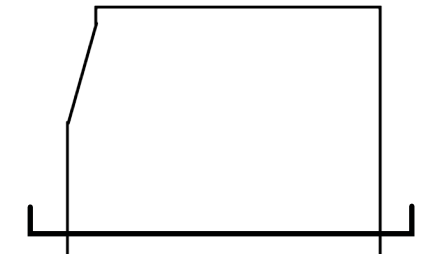
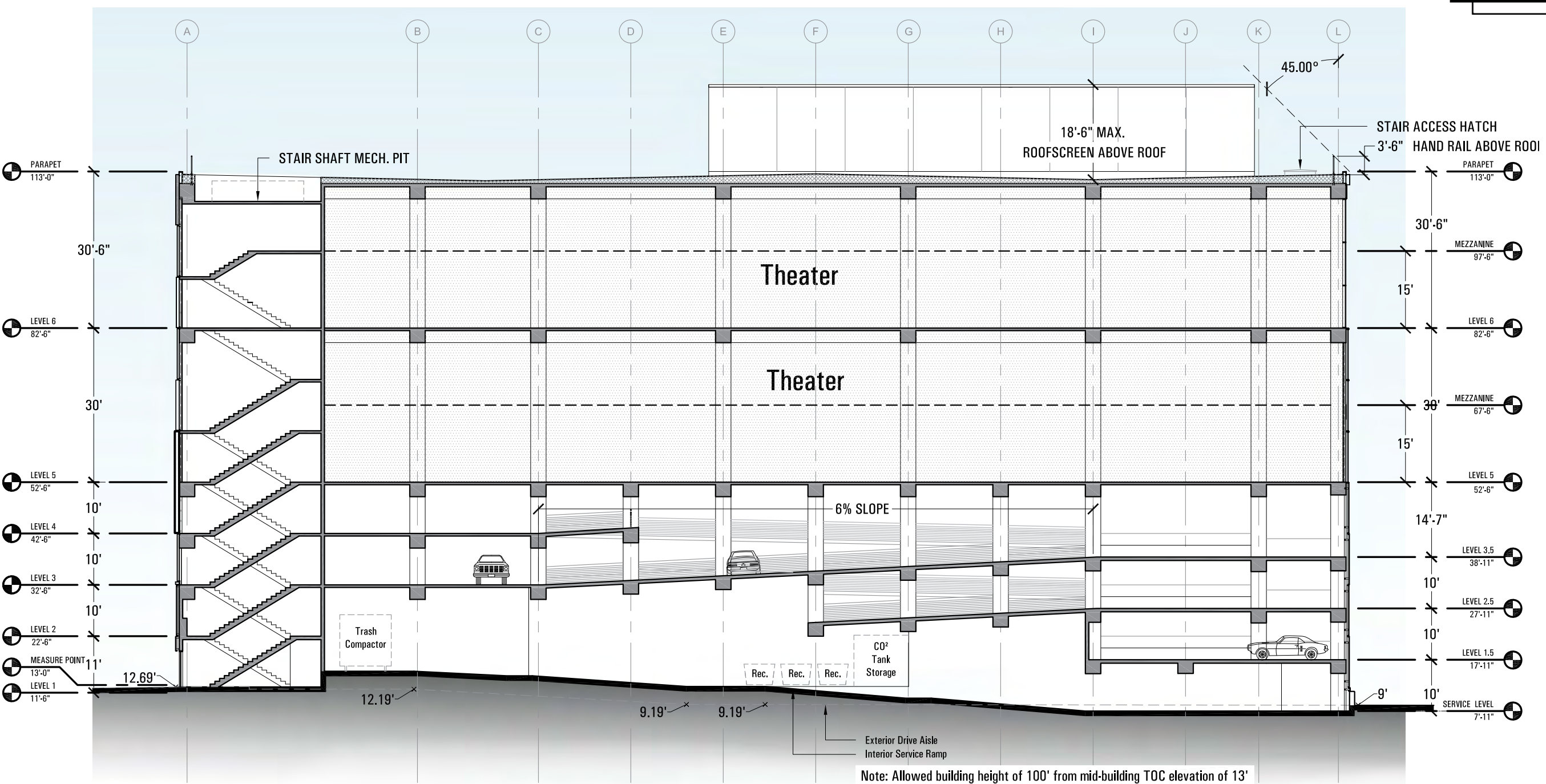


Building Section
Not to Scale



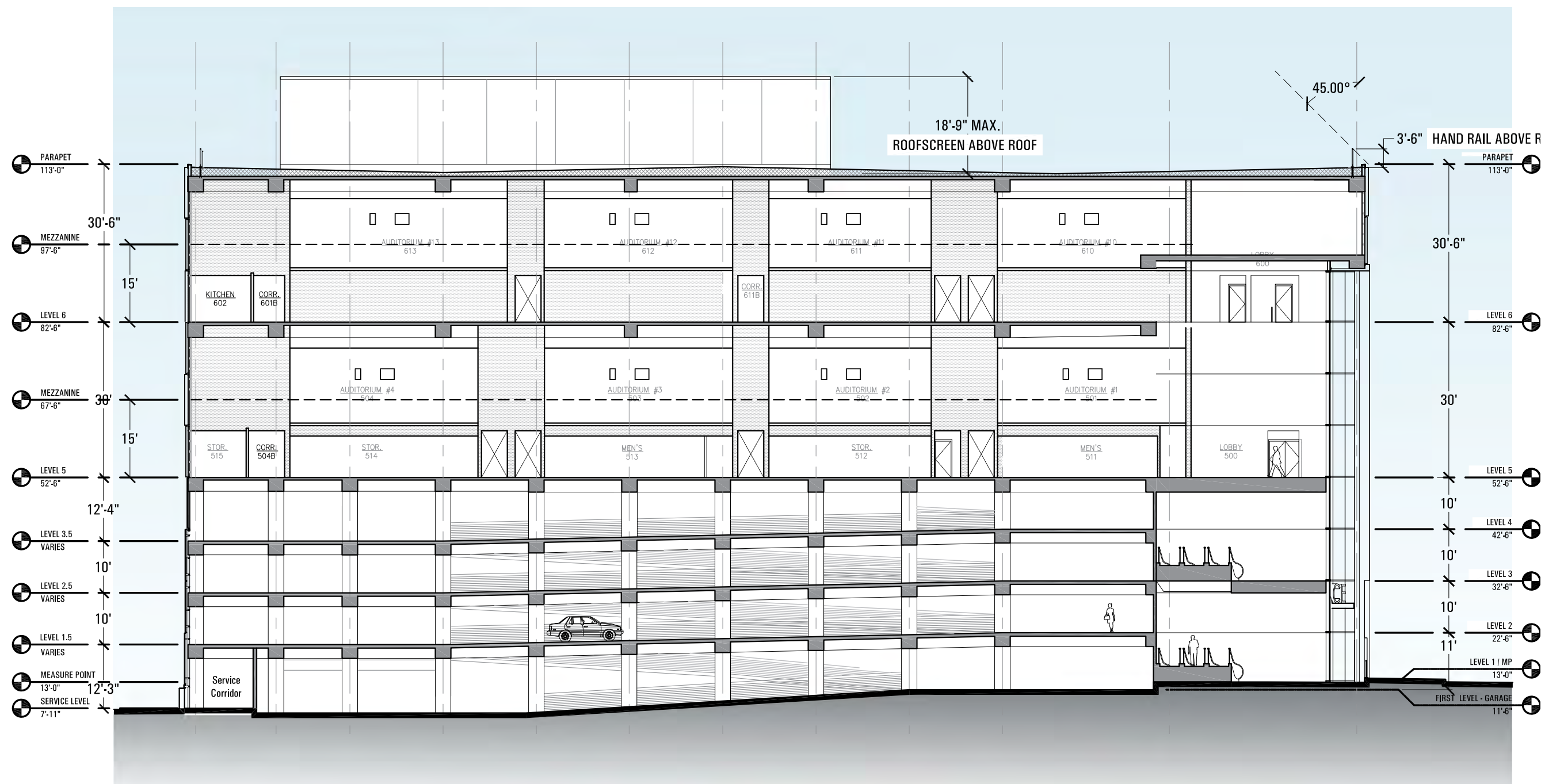
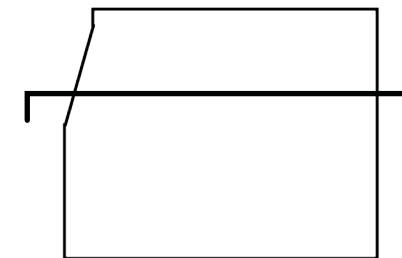
Building Section

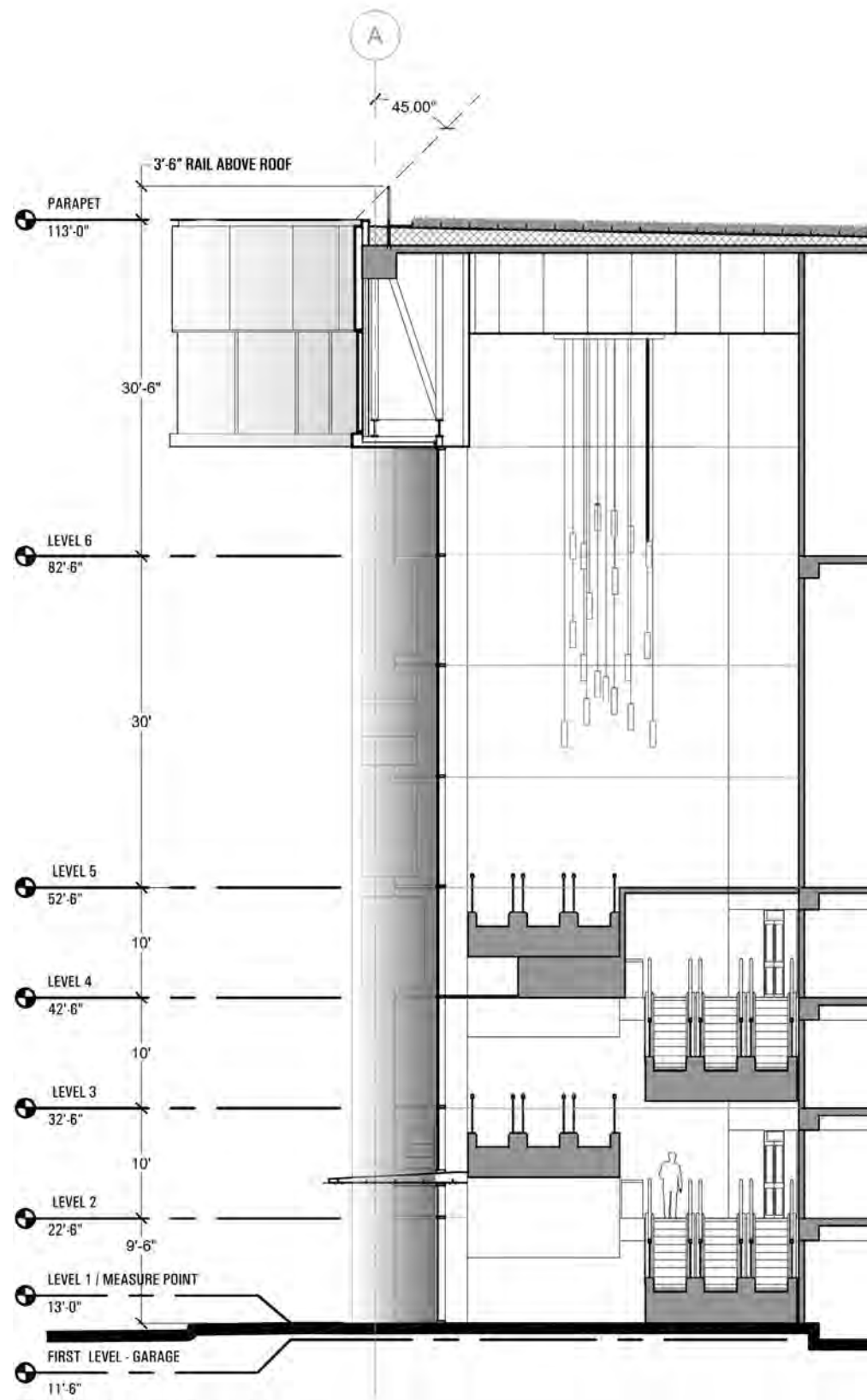
Not to Scale



Building Section

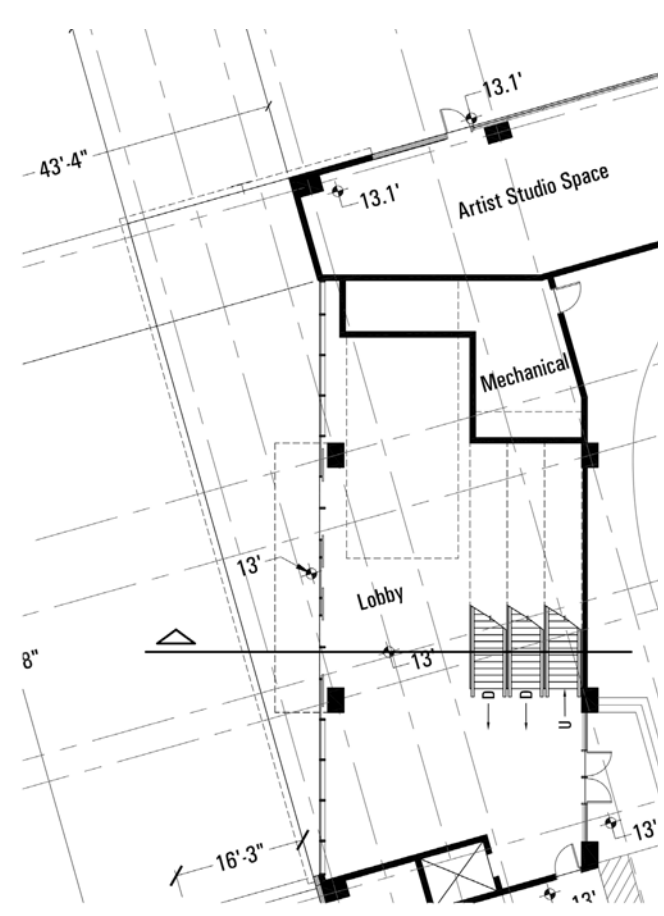
Not to Scale





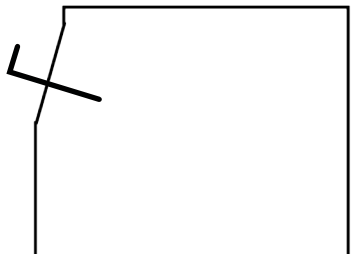
Building Section

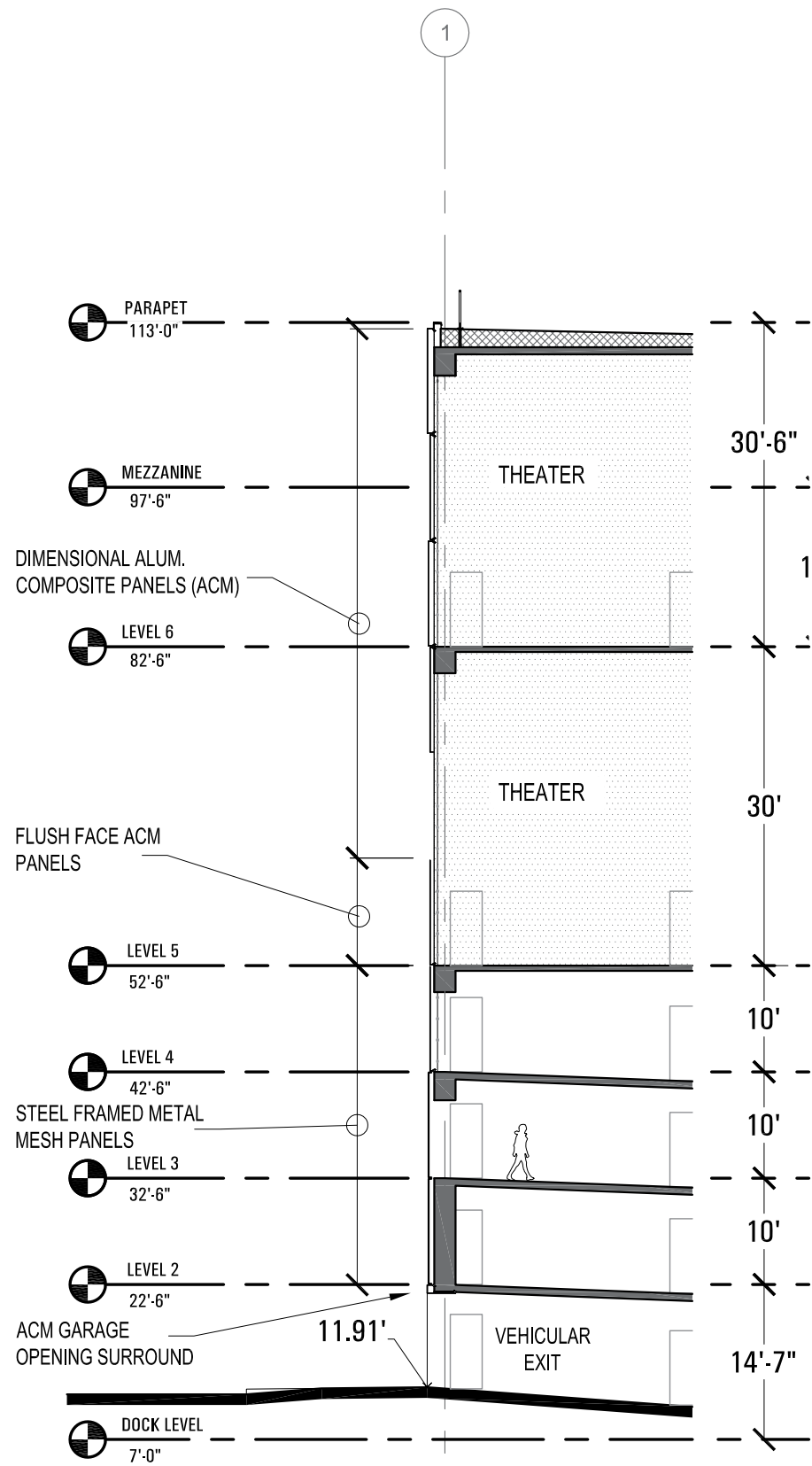
NTS



Floor Plan

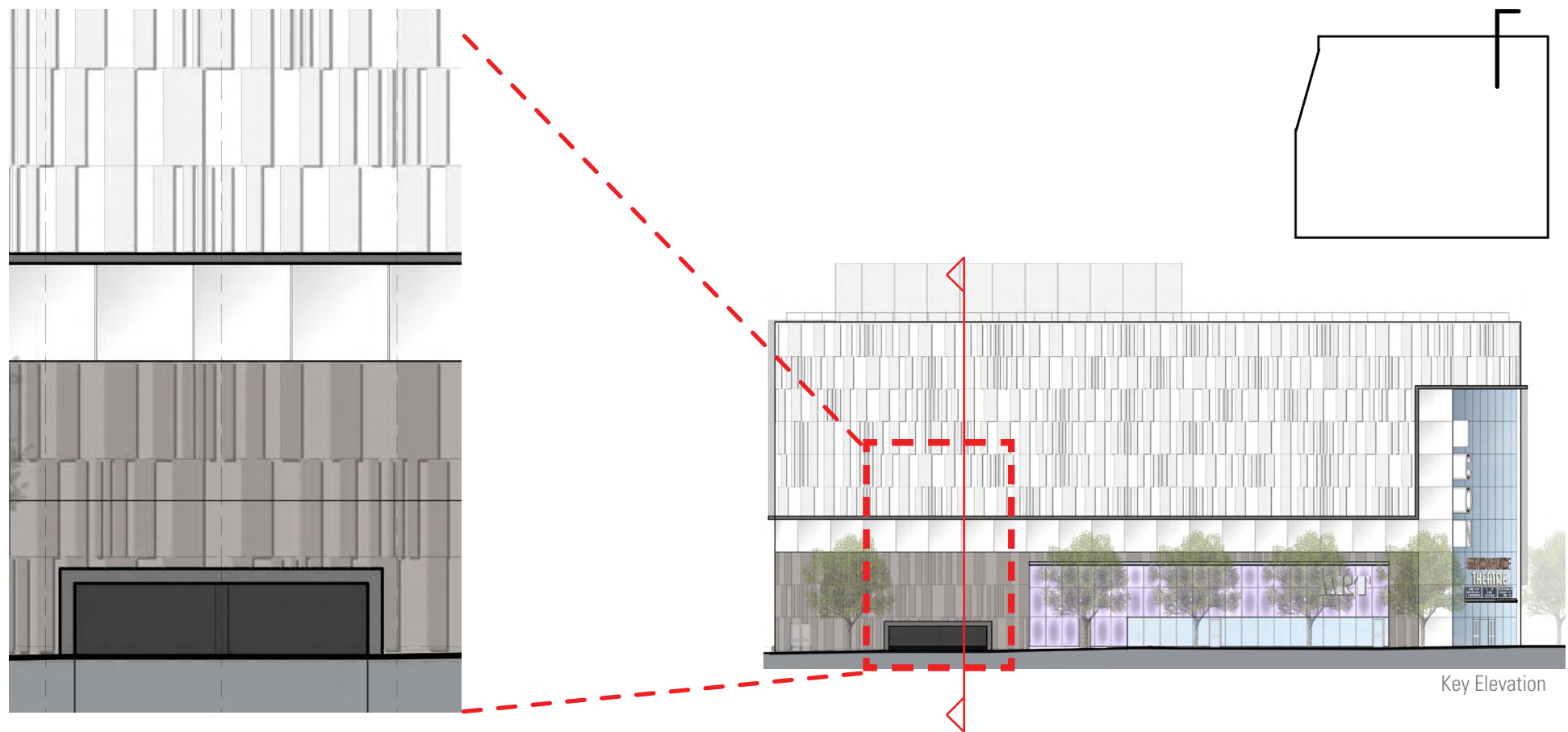
NTS





Building Section

Scale: 1/16" = 1'-0"



*Height and shape of trees is illustrative only and subject to change

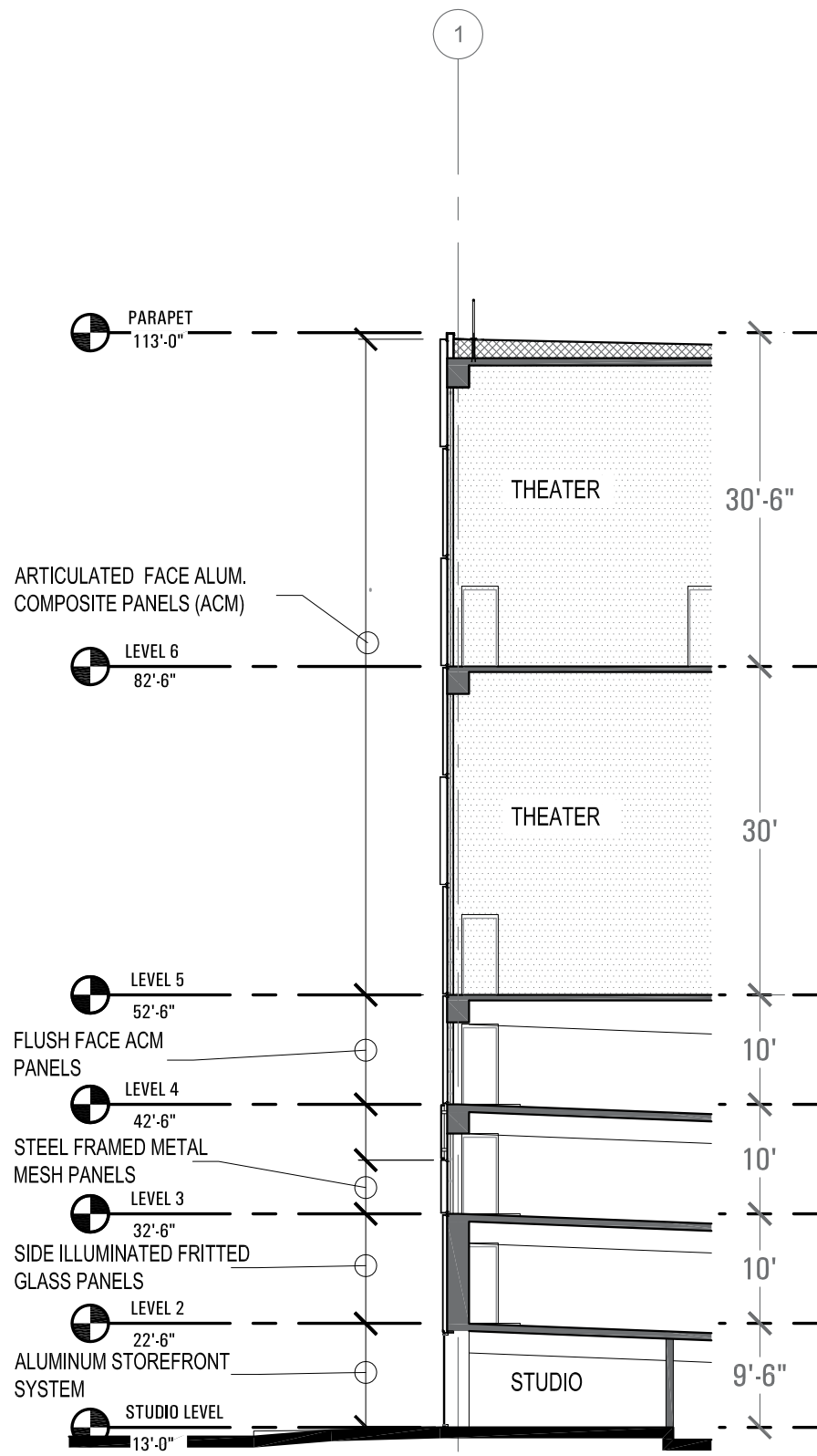
F1 Block Cinema

Forest City | PUD Public Hearing Package 08.29.2013

Enlarged Section - Vehicular Exit

A-38



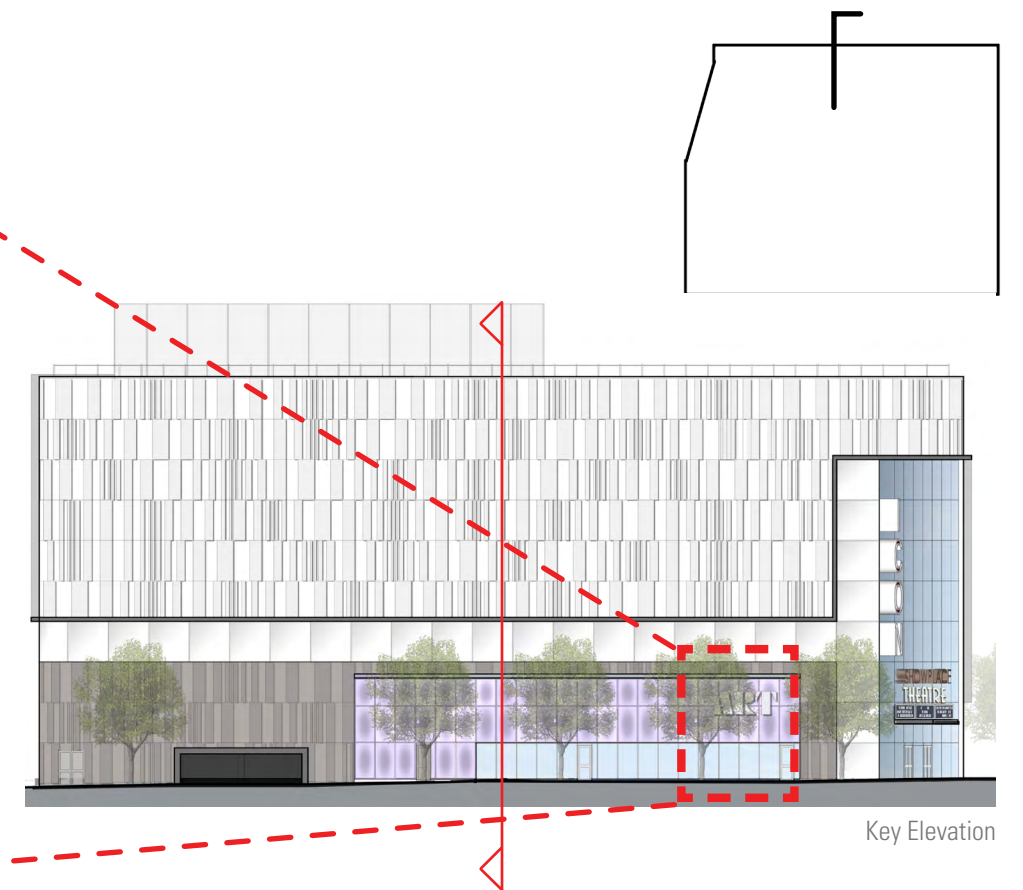


Building Section

Scale: 1/16" = 1'-0"

F1 Block Cinema

Forest City | PUD Public Hearing Package 08.29.2013

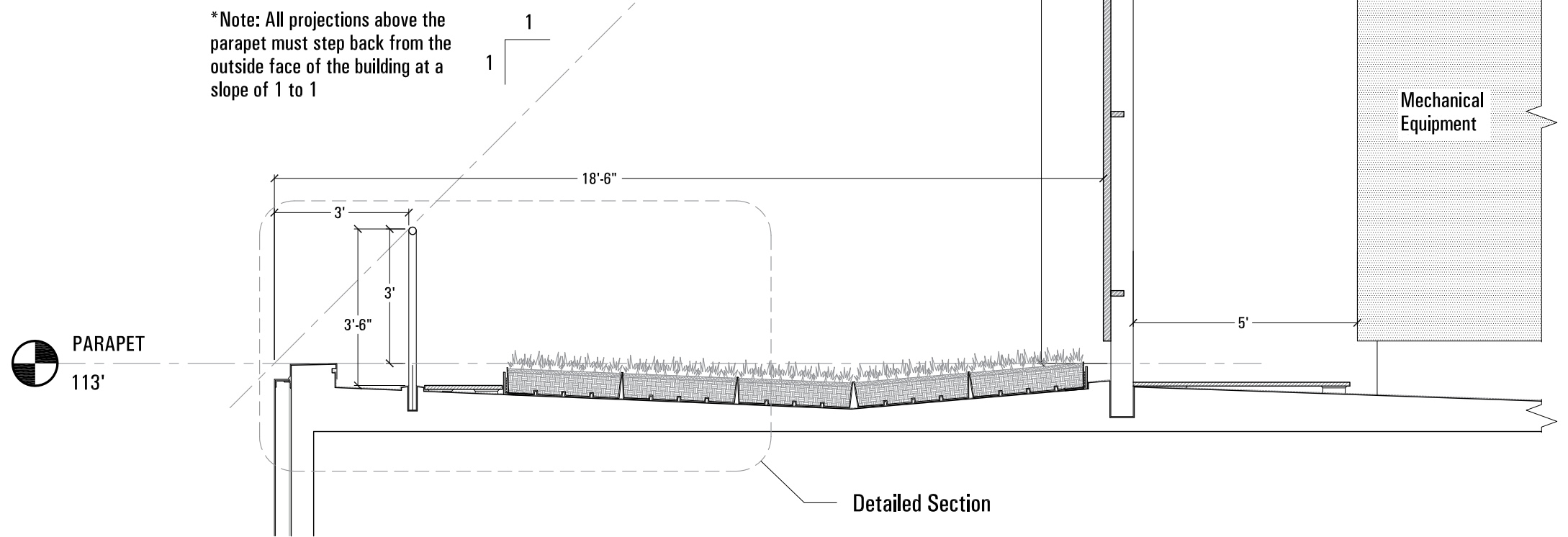
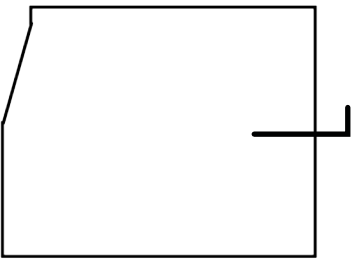
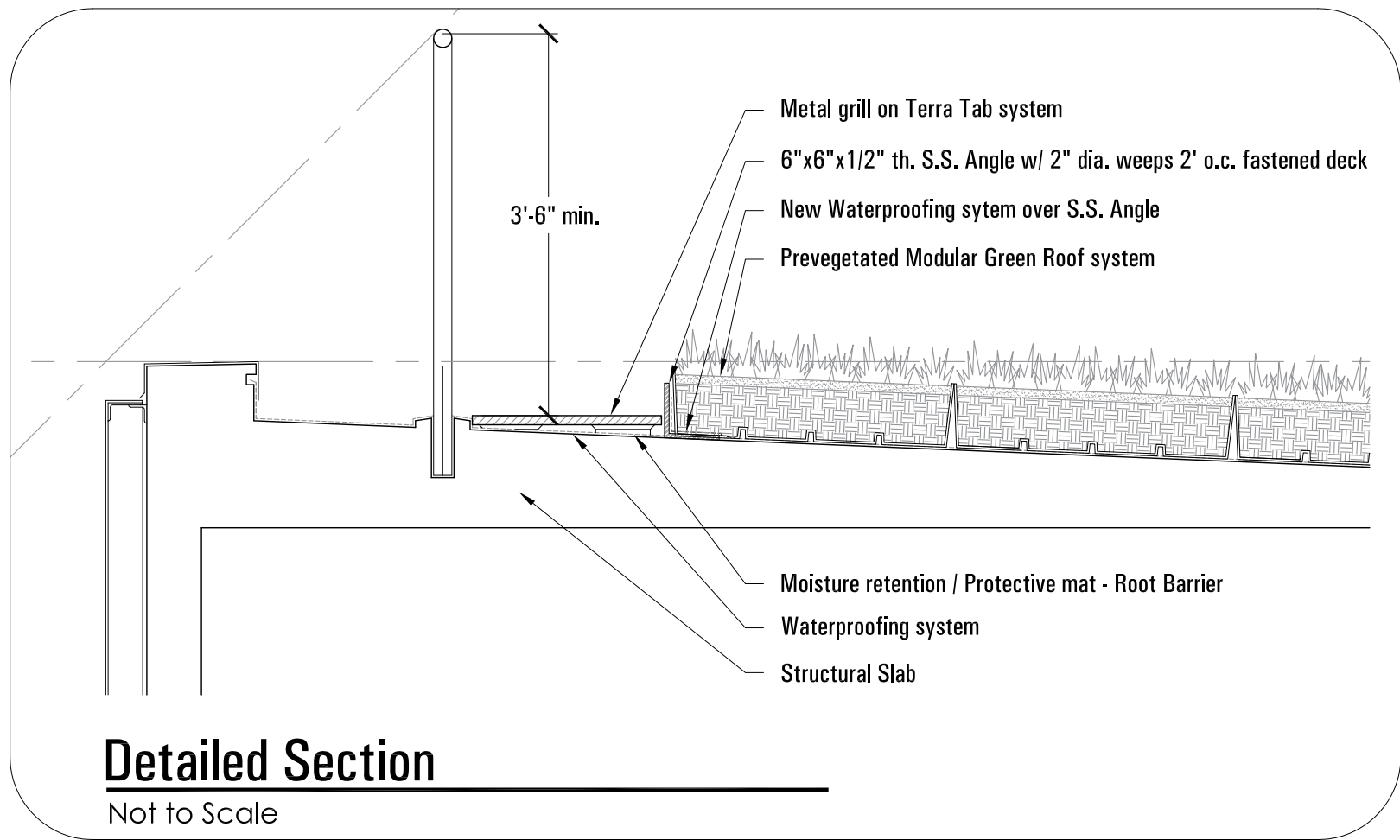


*Height and shape of trees is illustrative only and subject to change

Enlarged Section - Artist Studio

A-39





Section @ Parapet
Not to Scale

Enlarged Section - Roof Set-back



LEED 2009 for Core and Shell Development

Project Checklist

Project Name

Date

17 5 4 Sustainable Sites			Possible Points: 28
Y	?	N	
Y			Prereq 1 Construction Activity Pollution Prevention
1			Credit 1 Site Selection 1
5			Credit 2 Development Density and Community Connectivity 5
1			Credit 3 Brownfield Redevelopment 1
6			Credit 4.1 Alternative Transportation—Public Transportation Access 6
	2		Credit 4.2 Alternative Transportation—Bicycle Storage and Changing Rooms 2
	3		Credit 4.3 Alternative Transportation—Low-Emitting and Fuel-Efficient Vehicles 3
		2	Credit 4.4 Alternative Transportation—Parking Capacity 2
		1	Credit 5.1 Site Development—Protect or Restore Habitat 1
1			Credit 5.2 Site Development—Maximize Open Space 1
			Credit 6.1 Stormwater Design—Quantity Control 1
			Credit 6.2 Stormwater Design—Quality Control 1
1			Credit 7.1 Heat Island Effect—Non-roof 1
1			Credit 7.2 Heat Island Effect—Roof 1
		1	Credit 8 Light Pollution Reduction 1
1			Credit 9 Tenant Design and Construction Guidelines 1

2 4 Water Efficiency			Possible Points: 10
Y	?	N	
Y			Prereq 1 Water Use Reduction—20% Reduction
2			Credit 1 Water Efficient Landscaping 2 to 4
	2		Credit 2 Innovative Wastewater Technologies 2
	2		Credit 3 Water Use Reduction 2 to 4

5 6 Energy and Atmosphere			Possible Points: 37
Y	?	N	
Y			Prereq 1 Fundamental Commissioning of Building Energy Systems
Y			Prereq 2 Minimum Energy Performance
Y			Prereq 3 Fundamental Refrigerant Management
3			Credit 1 Optimize Energy Performance 3 to 21
	4		Credit 2 On-Site Renewable Energy 4
	2		Credit 3 Enhanced Commissioning 2
			Credit 4 Enhanced Refrigerant Management 2
			Credit 5.1 Measurement and Verification—Base Building 3
			Credit 5.2 Measurement and Verification—Tenant Submetering 3
2			Credit 6 Green Power 2

6 1 1 Materials and Resources			Possible Points: 13
Y	?	N	
Y			Prereq 1 Storage and Collection of Recyclables
		1	Credit 1 Building Reuse—Maintain Existing Walls, Floors, and Roof 1 to 5
1			Credit 2 Construction Waste Management 1 to 2
	1		Credit 3 Materials Reuse 1
2			Credit 4 Recycled Content 1 to 2
2			Credit 5 Regional Materials 1 to 2
1			Credit 6 Certified Wood 1

6 2 Indoor Environmental Quality			Possible Points: 12
Y	?	N	
Y			Prereq 1 Minimum Indoor Air Quality Performance
Y			Prereq 2 Environmental Tobacco Smoke (ETS) Control
			Credit 1 Outdoor Air Delivery Monitoring 1
			Credit 2 Increased Ventilation 1
1			Credit 3 Construction IAQ Management Plan—During Construction 1
1			Credit 4.1 Low-Emitting Materials—Adhesives and Sealants 1
1			Credit 4.2 Low-Emitting Materials—Paints and Coatings 1
1			Credit 4.3 Low-Emitting Materials—Flooring Systems 1
			Credit 4.4 Low-Emitting Materials—Composite Wood and Agrifiber Products 1
			Credit 5 Indoor Chemical and Pollutant Source Control 1
		1	Credit 6 Controllability of Systems—Thermal Comfort 1
		1	Credit 7 Thermal Comfort—Design 1
1			Credit 8.1 Daylight and Views—Daylight 1
1			Credit 8.2 Daylight and Views—Views 1

6 Innovation and Design Process			Possible Points: 6
Y	?	N	
1			Credit 1.1 Innovation in Design: Specific Title 1
1			Credit 1.2 Innovation in Design: Specific Title 1
1			Credit 1.3 Innovation in Design: Specific Title 1
1			Credit 1.4 Innovation in Design: Specific Title 1
1			Credit 1.5 Innovation in Design: Specific Title 1
1			Credit 2 LEED Accredited Professional 1

Regional Priority Credits			Possible Points: 4
Y	?	N	
			Credit 1.1 Regional Priority: Specific Credit 1
			Credit 1.2 Regional Priority: Specific Credit 1
			Credit 1.3 Regional Priority: Specific Credit 1
			Credit 1.4 Regional Priority: Specific Credit 1

42 16 7 Total			Possible Points: 110
---------------	--	--	----------------------

Certified 40 to 49 points Silver 50 to 59 points Gold 60 to 79 points Platinum 80 to 110

