

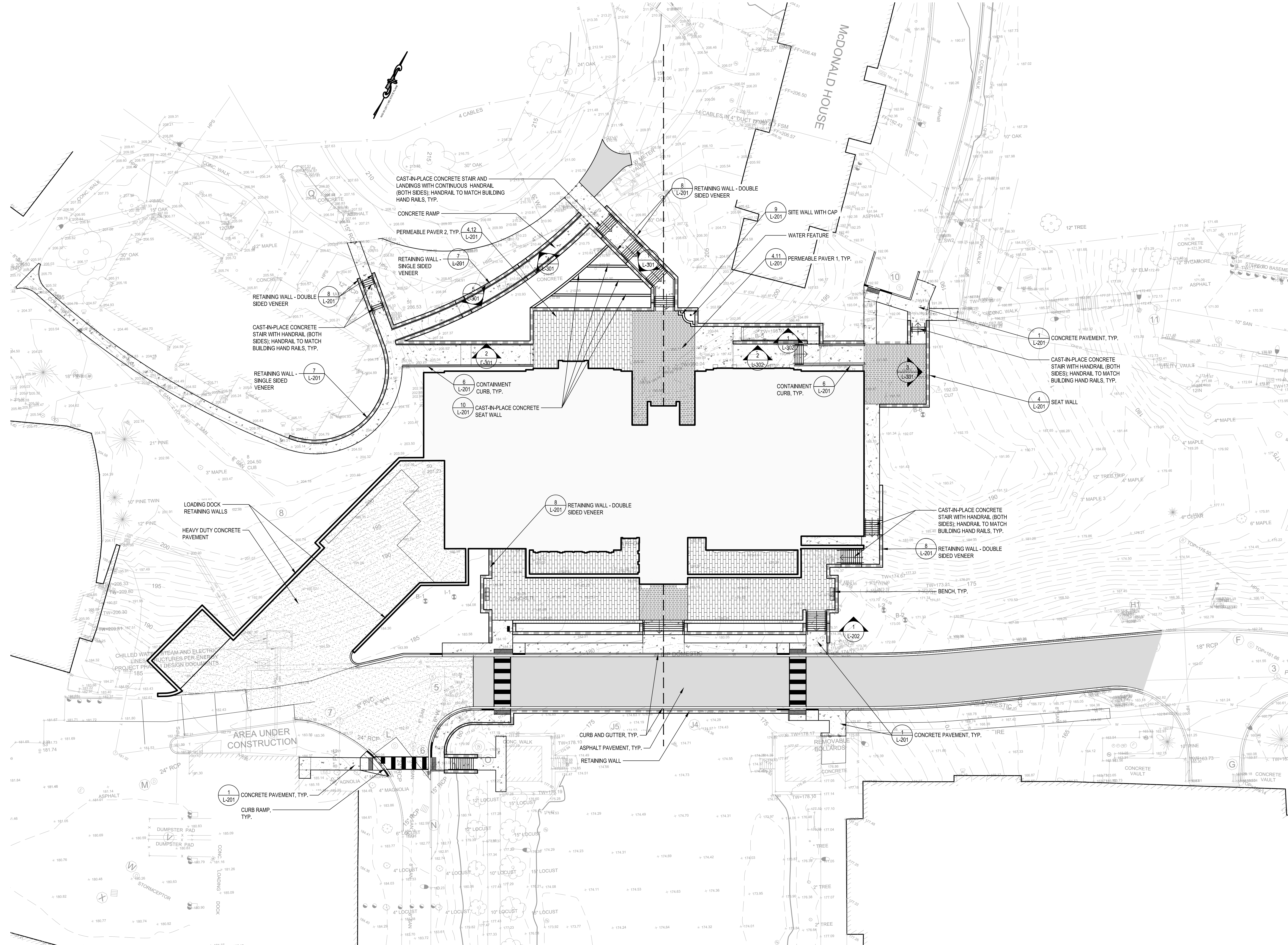
C:\REVIT\LOCAL\174490_CUA Dining R2_R17_ARCH_e.dwg
7/15/2019 10:53:33 AM

SHEET NOTES

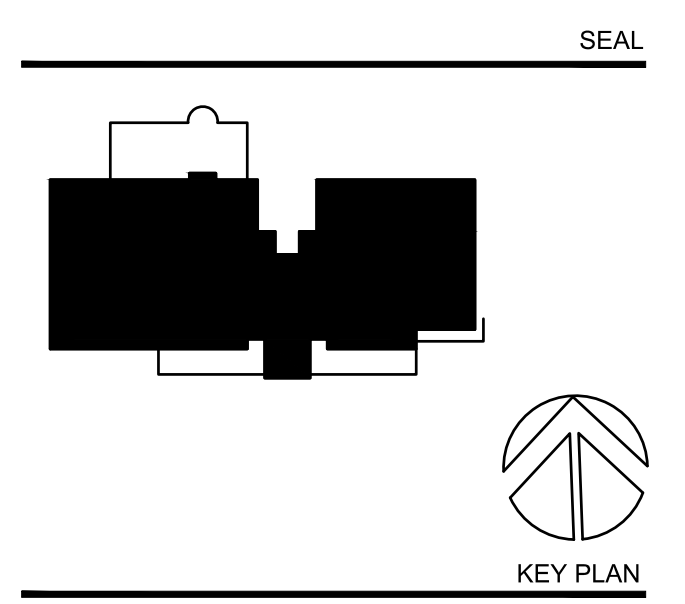
1. HATCH PATTERNS ARE FOR REFERENCE ONLY. HATCHES DO NOT REPRESENT SCALE OR DIRECTIONAL LAYOUT PATTERN OF MATERIALS UNLESS OTHERWISE NOTED.
2. ALL DIMENSIONS MUST BE FIELD VERIFIED AND ANY DISCREPANCIES REPORTED TO THE OWNER'S REPRESENTATIVE IMMEDIATELY.
3. SET AUXILIARY BENCHMARKS AS REQUIRED TO LAYOUT AND CONSTRUCT WORK.
4. DIMENSIONS ARE TO EDGE OF PAVEMENT, BACK OF CURB & GUTTERS, FACE OF WALLS, FACE OF RIBBON CURBS, AND CENTERLINE OF FENCE POSTS UNLESS OTHERWISE NOTED.
5. COMPACTION AND PAVEMENT DESIGN FOR BITUMINOUS PAVEMENT SHALL BE PER ASHTO GUIDE FOR DESIGN OF PAVEMENT STRUCTURES AND RECOMMENDED RECONSTRUCTION PAVEMENT CATALOG FOR THE DISTRICT OF COLUMBIA.
6. SITE FURNISHING LOCATIONS SHALL BE APPROVED BY THE OWNER'S REPRESENTATIVE PRIOR TO INSTALLATION.
7. FIELD LOCATE ALL UTILITIES AND STRUCTURES PRIOR TO CONSTRUCTION. NOTIFY THE OWNER'S REPRESENTATIVE OF ANY CONFLICTS OR UNSATISFACTORY CONDITIONS PRIOR TO CONSTRUCTION OF BUILDING AND SURFACE IMPROVEMENTS. CONSTRUCTION OF SURFACE IMPROVEMENTS SHALL NOT COMMENCE UNTIL UNSATISFACTORY CONDITIONS AND CONFLICTS WITH UNDERGROUND UTILITIES HAVE BEEN RESOLVED.
8. CONTRACTOR SHALL MAKE ADJUSTMENTS TO THE LAYOUT OF PROPOSED SITE ELEMENTS AS DIRECTED BY THE OWNER'S REPRESENTATIVE TO ENSURE PROPER CONNECTION TO EXISTING FACILITIES AND SITE AMENITIES.
9. ADJUST ALL FRAMES, COVERS, VALVE BOXES AND MANHOLE COVERS TO PROPOSED FINISH GRADE PRIOR TO COMPLETION OF PAVING OR RELATED CONSTRUCTION.
10. PAVING RADI SHALL BE FORMED COMPLETELY AND SMOOTHLY TRANSITION INTO TANGENTS AND ADJOINING LINES. FLAT CURVE SEGMENTS IN HORIZONTAL LAYOUT SHALL BE REMOVED AND REPLACED AT NO COST TO OWNER.
11. IN ADDITION TO THOSE SHOWN, EXPANSION JOINTS SHALL BE LOCATED AT ALL FIXED SITE ELEMENTS, I.E. WHERE CONCRETE PAVEMENT MEETS BUILDINGS, UTILITIES, WALLS, CURBS, EXISTING CONCRETE PAVEMENT, ETC.
12. WHERE PROPOSED PAVEMENT ABUTS EXISTING PAVEMENT, JOINT PATTERNS SHALL MATCH AND SUPERCEDE JOINT PATTERNS SHOWN ON PLANS.
13. NEW AND EXISTING PAVEMENT AND CURBS DAMAGED DURING CONSTRUCTION SHALL BE REPAIRED/REPLACED AT NO COST TO THE OWNER.
14. SEE SHEETS CIVIL PLANS FOR UTILITY AND GRADING INFORMATION.
15. SEE ARCHITECTURAL AND STRUCTURAL PLANS FOR DINING FACILITY.
16. SEE ELECTRICAL PLANS FOR ALL SITE LIGHTING, HIGH VOLTAGE ELECTRICAL CONNECTIONS AND LOW VOLTAGE AND COMMUNICATIONS CONNECTIONS.

LEGEND

- ASPHALT PAVEMENT
- HEAVY DUTY CONCRETE PAVEMENT
- CONCRETE PAVEMENT
- PERMEABLE PAVER 1
- PERMEABLE PAVER 2
- CURB AND GUTTER
- SPILLOUT CURB AND GUTTER
- CURB TRANSITION
- FLUSH CURB AND GUTTER
- CURB RAMP
- CONTROL JOINT
- ISOLATION (EXPANSION) JOINT
- SEAT WALL
- RETAINING WALL
- PRECAST STONE BALUSTER RAILING
- CONTAINMENT CURB
- GUARDRAIL
- ORNAMENTAL METAL FENCE
- BENCH



NO.	DATE	ISSUE

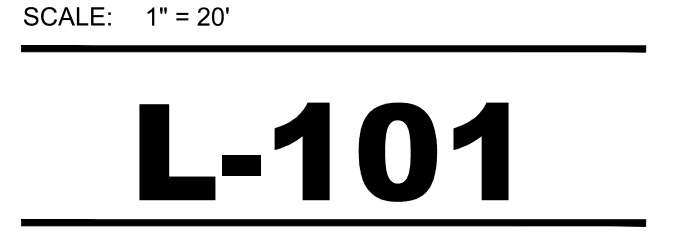


PERKINS EASTMAN
 ONE THOMAS CIRCLE NW, SUITE 200
 WASHINGTON, DC 20005
 T: +1 202 881 1325
 F: +1 202 881 1326

Owner:
 THE CATHOLIC UNIVERSITY OF AMERICA
 620 MICHIGAN AVE NE WASHINGTON, D.C. 20046
Civil Site:
 RUMMEL KLEPPER & KAHL
 300 M STREET, SE SUITE 560 WASHINGTON, DC 20003
Landscape:
 SMITHGROUP
 35 E WACKER DRIVE, SUITE 900 CHICAGO, IL 60601
Structural:
 TADJER-CHOEN-EDLSON ASSOCIATES
 1100 SPRING ST, 5TH FLOOR, SILVER SPRING, MD 20910
Mechanical & Plumbing:
 MUELLER ASSOCIATES
 1306 CONNOR DR, SUITE 100, LINTHICUM, MD 21090
Electrical:
 MUELLER ASSOCIATES
 1306 CONNOR DR, SUITE 100, LINTHICUM, MD 21090
Lighting Consultant:
 STROIK LIGHTING DESIGN
 1470 Wiggaman Circle, McLean, VA 22101
Food Services:
 RICCA DESIGN STUDIOS
 515 WASHINGTON ST, NORWELL, MA 02061
AVIT, Acoustics, & Security Consultant:
 SHEN MILSON & WILKE
 1220 N FILLMORE ST SUITE 360 ARLINGTON, VA 22201

PROJECT TITLE:
THE CATHOLIC UNIVERSITY OF AMERICA
DINING COMMONS
 620 MICHIGAN AVE NE WASHINGTON, D.C. 20064
 PROJECT No: 74490.00

DRAWING TITLE:
SITE PLAN - OVERALL



L-101
 DESIGN DEVELOPMENT