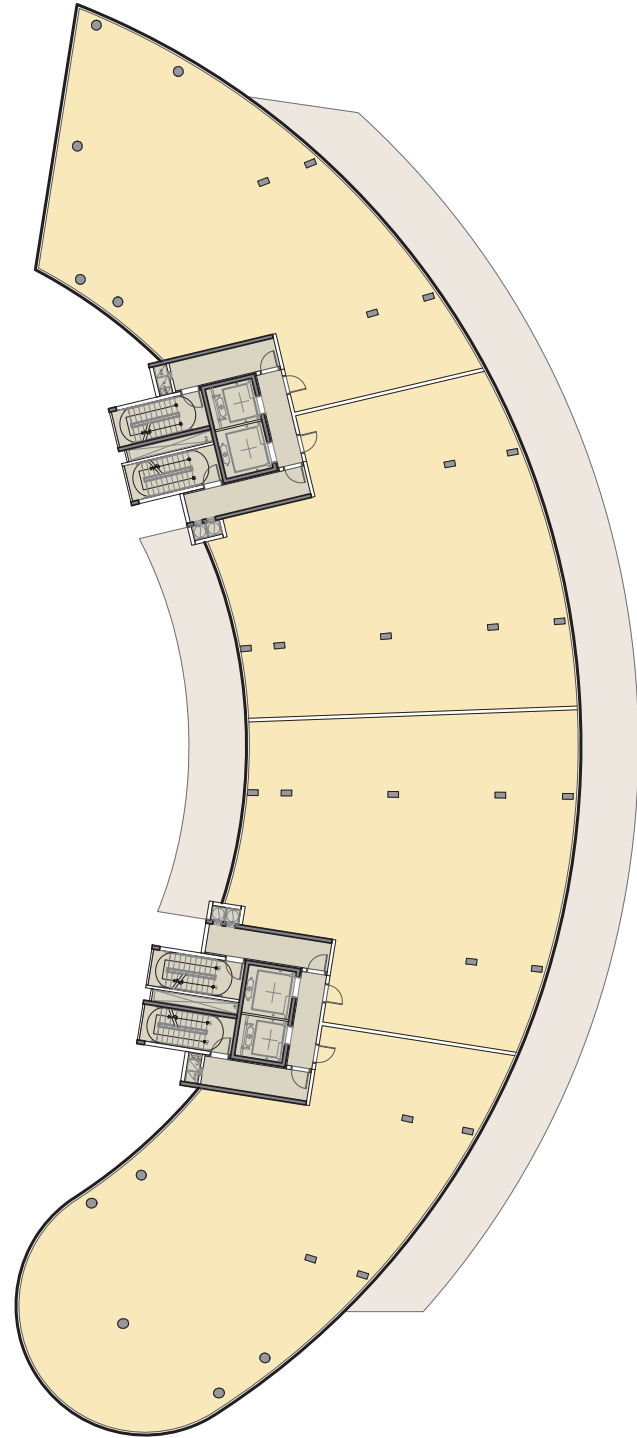
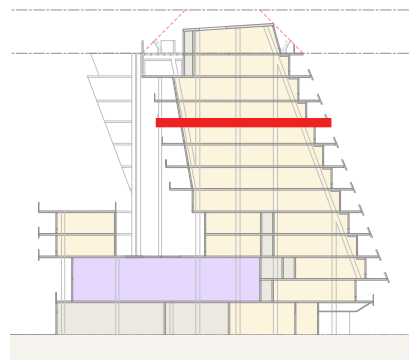
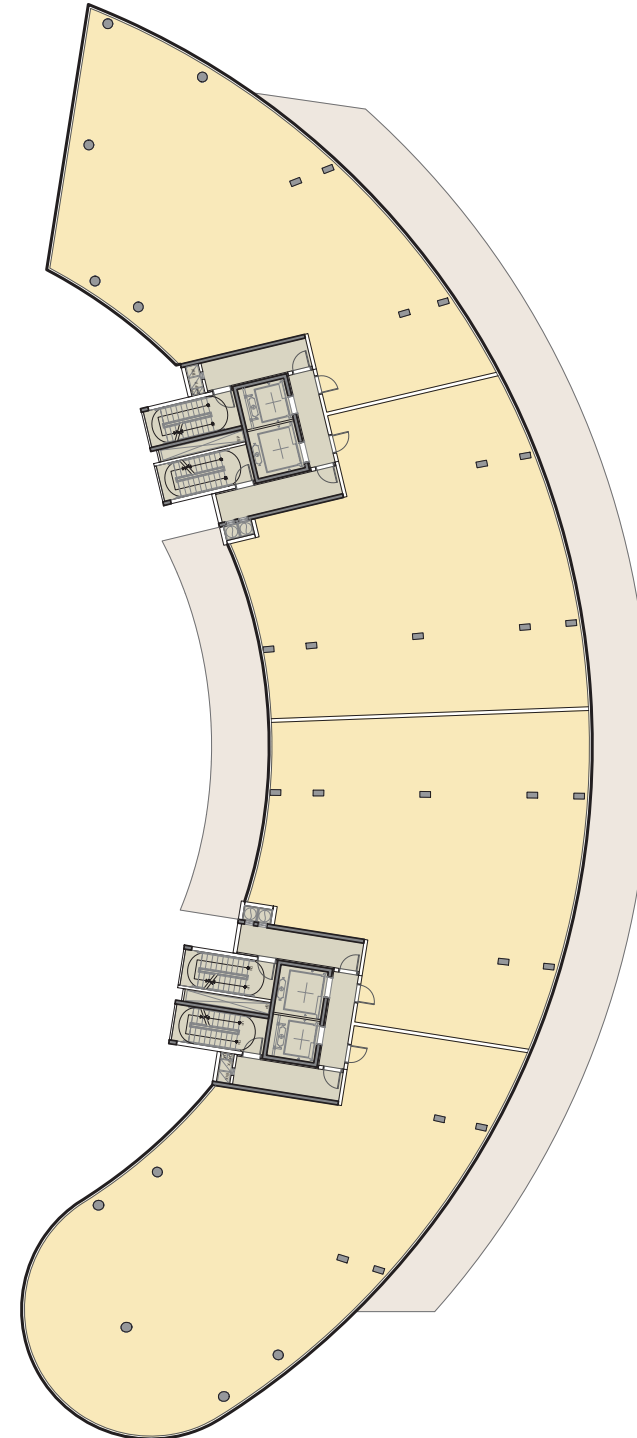


LEVEL 10

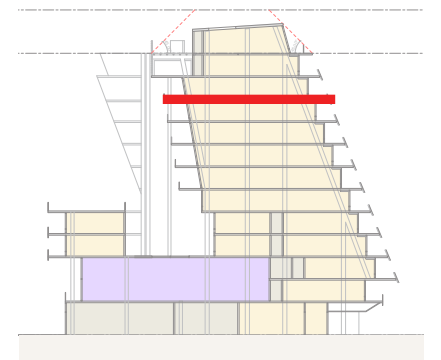


LEVEL 11



LEGEND

- RESIDENTIAL
- AMENITY
- CORE/CORRIDOR
- TERRACE/BALCONY



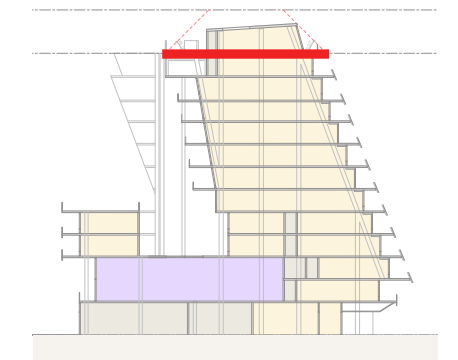
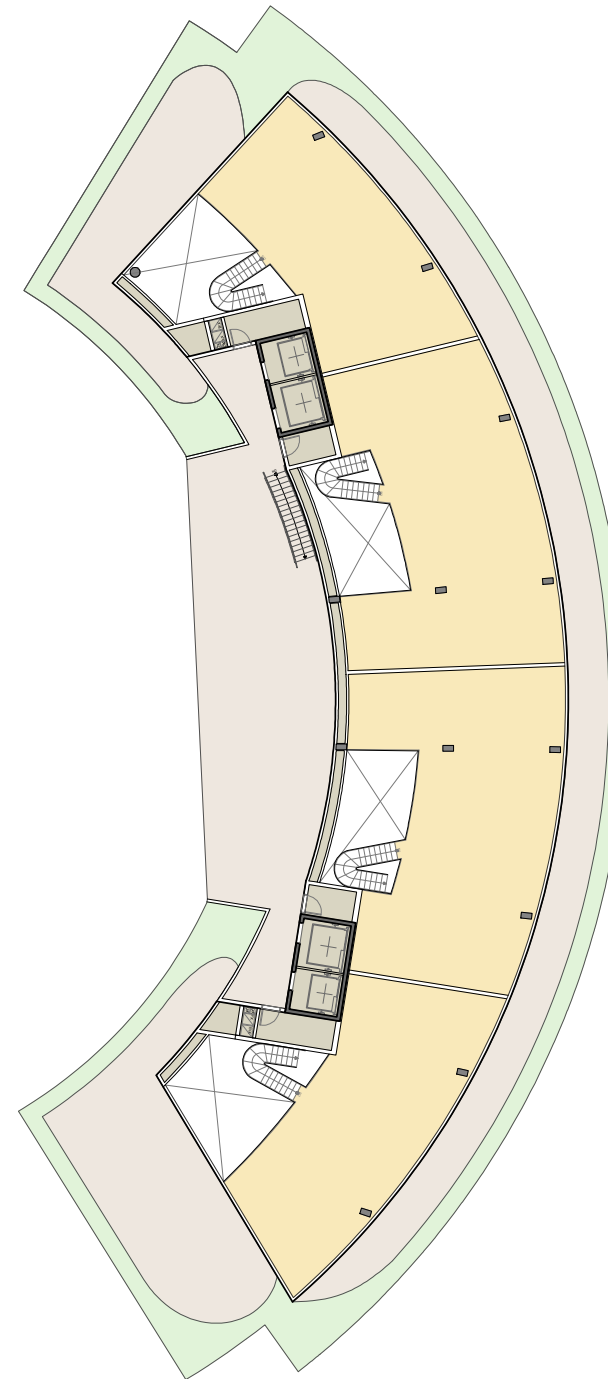
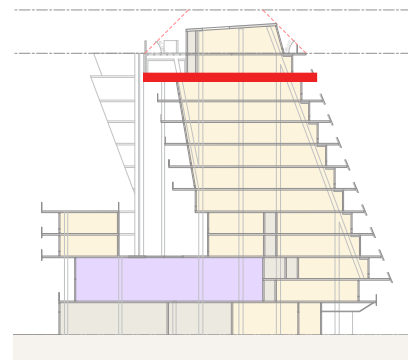
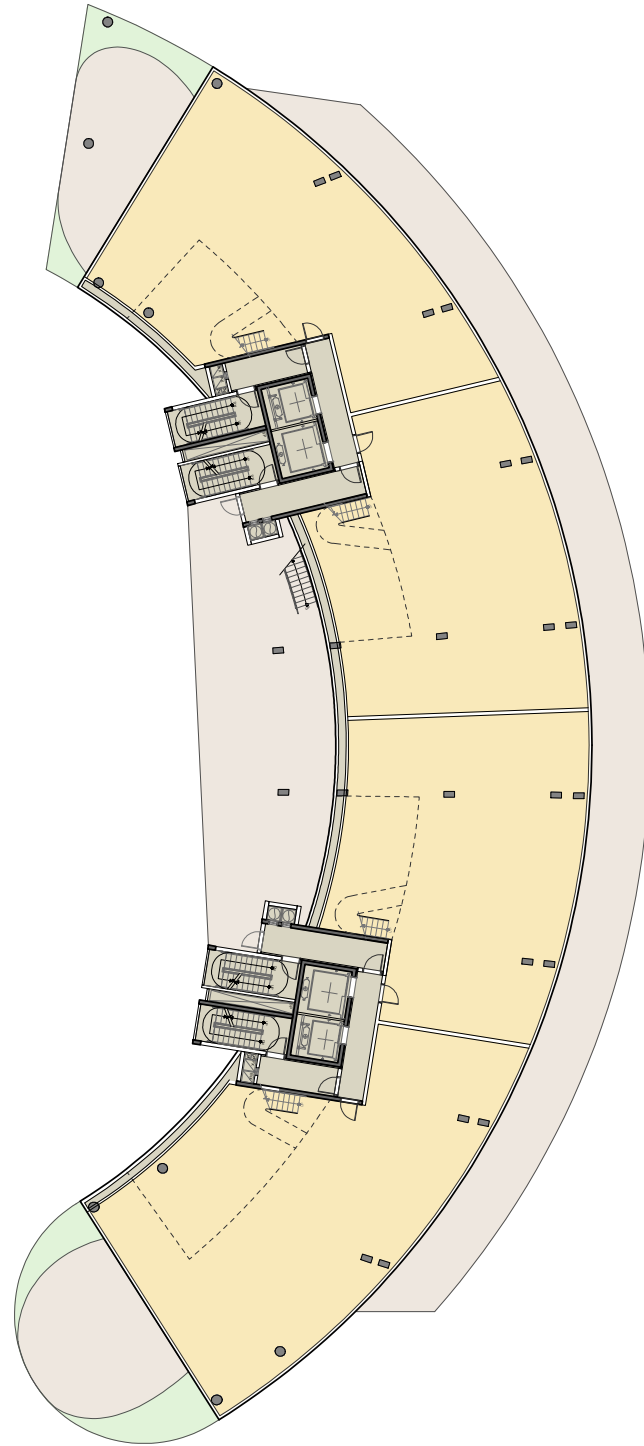
LEVEL 12

PENTHOUSE







LEGEND

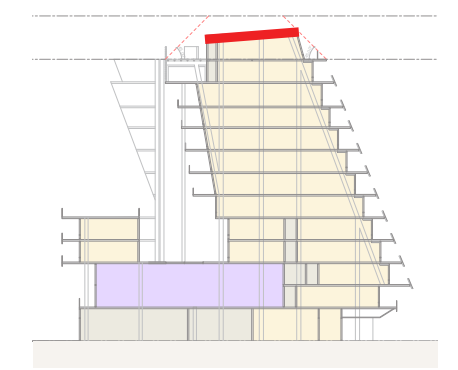
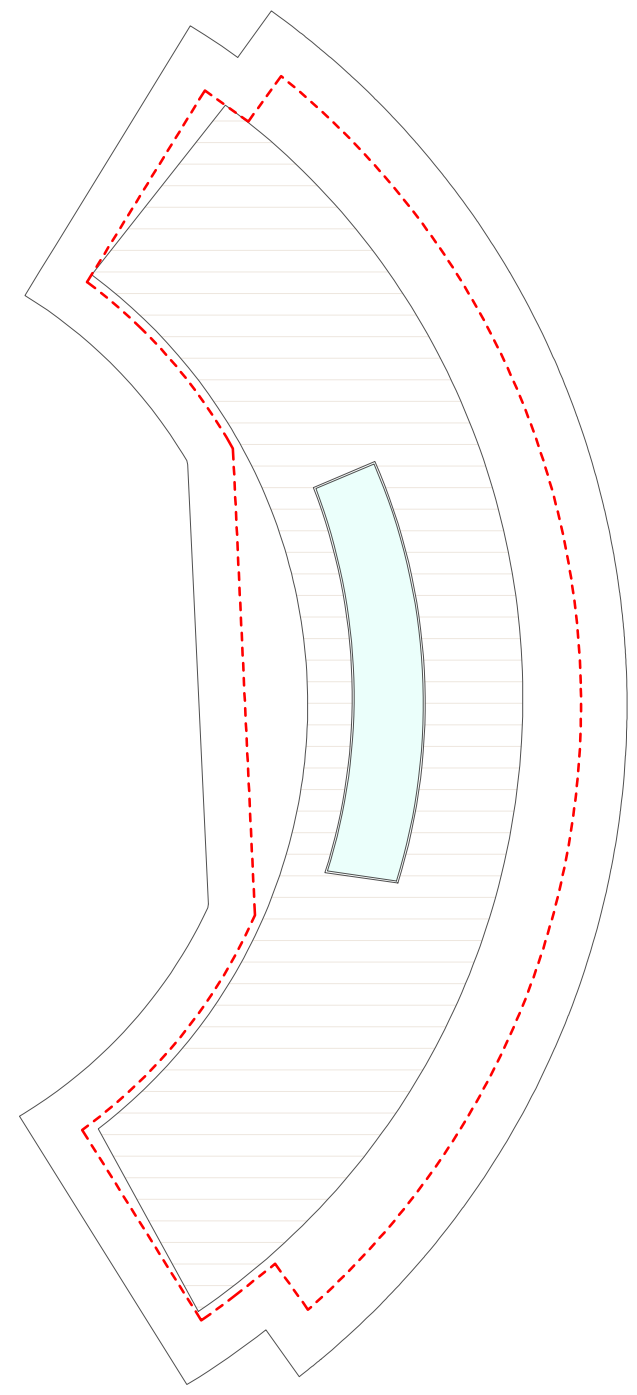
- RESIDENTIAL
- AMENITY
- CORE/CORRIDOR
- TERRACE/BALCONY

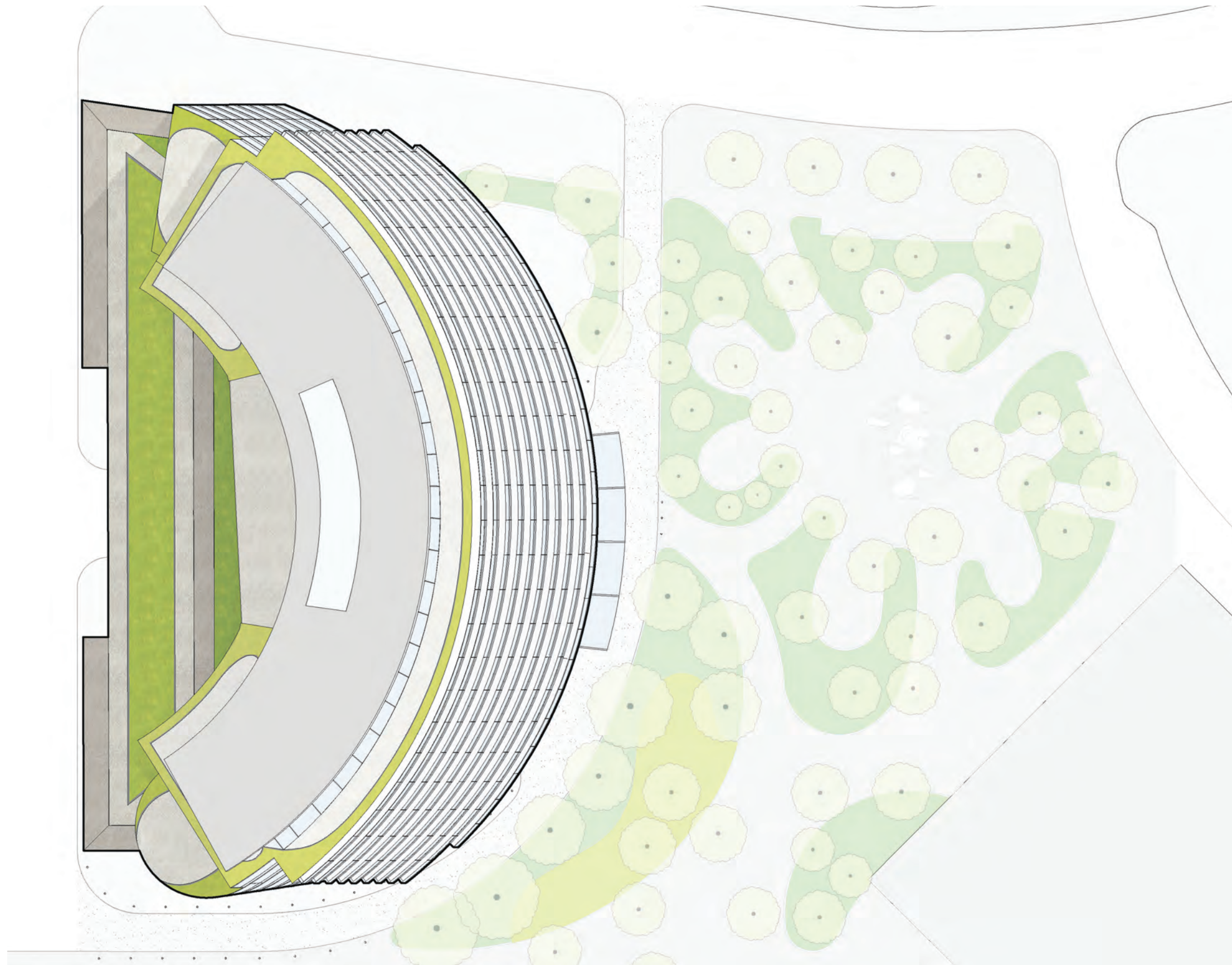




LEGEND

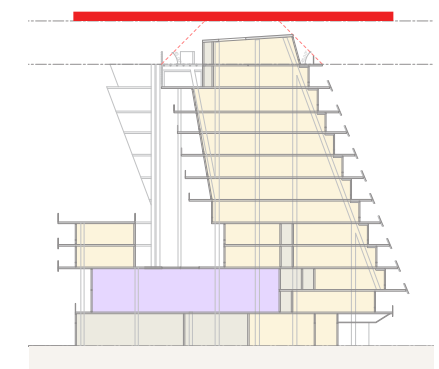
-  RESIDENTIAL
-  AMENITY
-  CORE/CORRIDOR
-  TERRACE/BALCONY

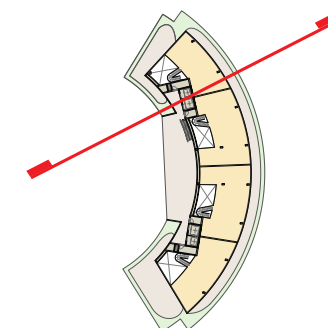
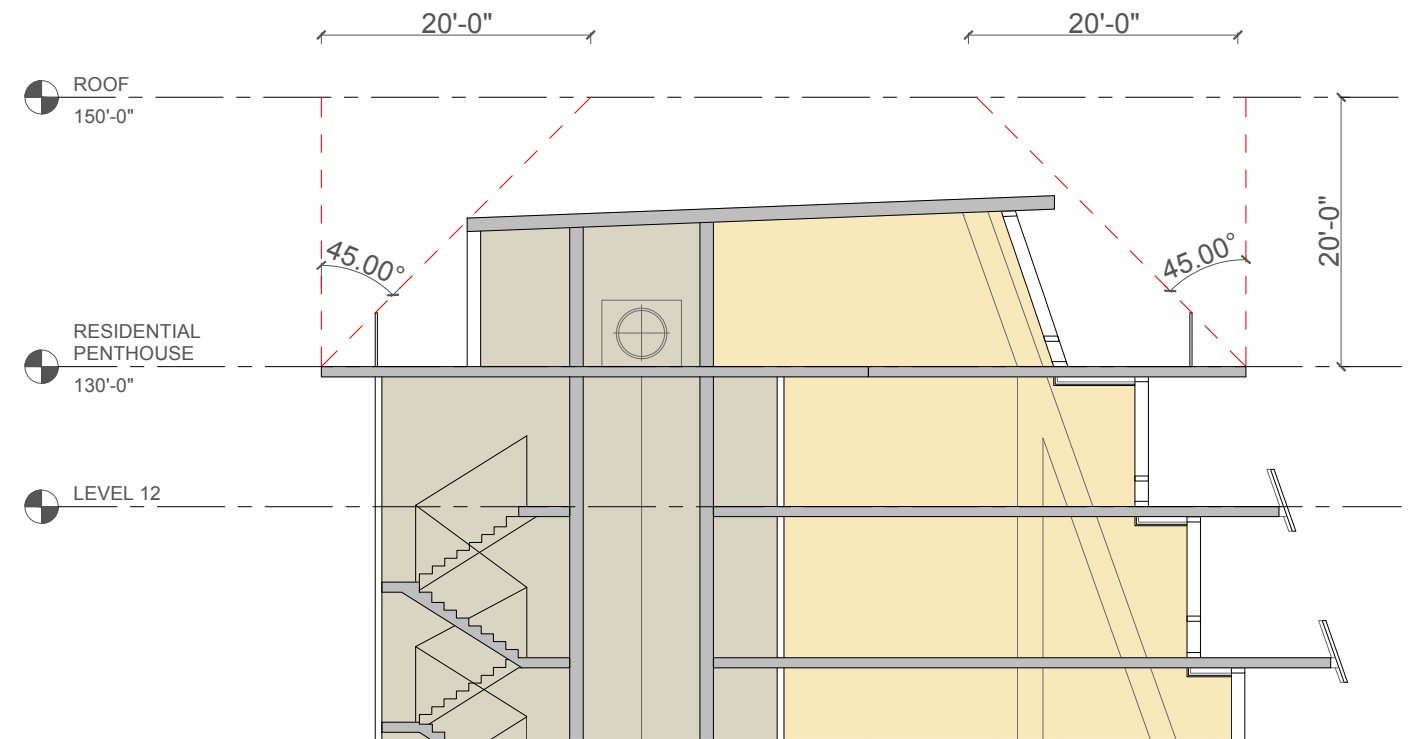
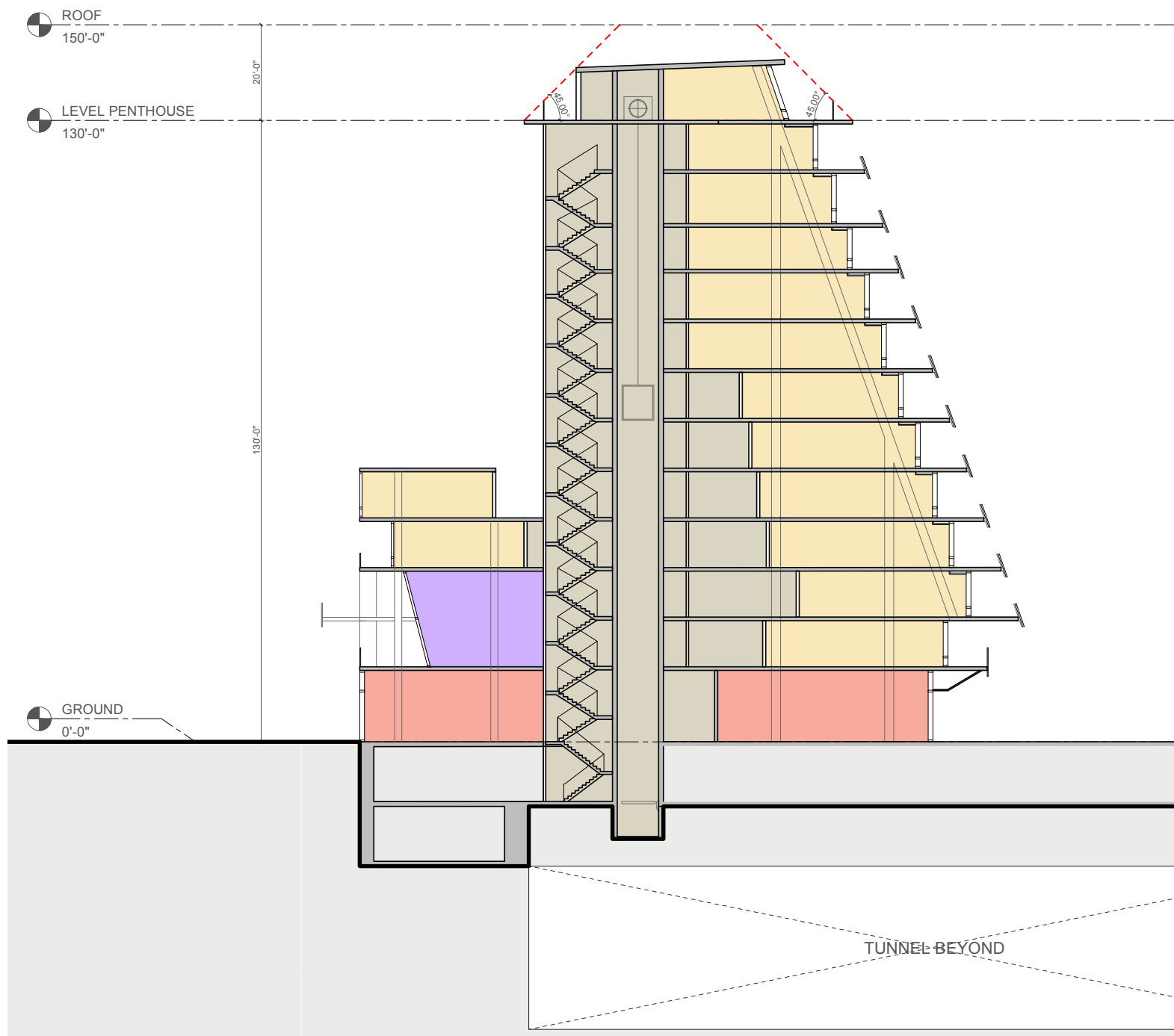




LEGEND

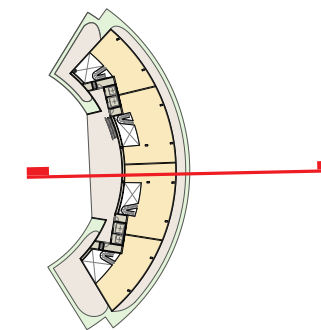
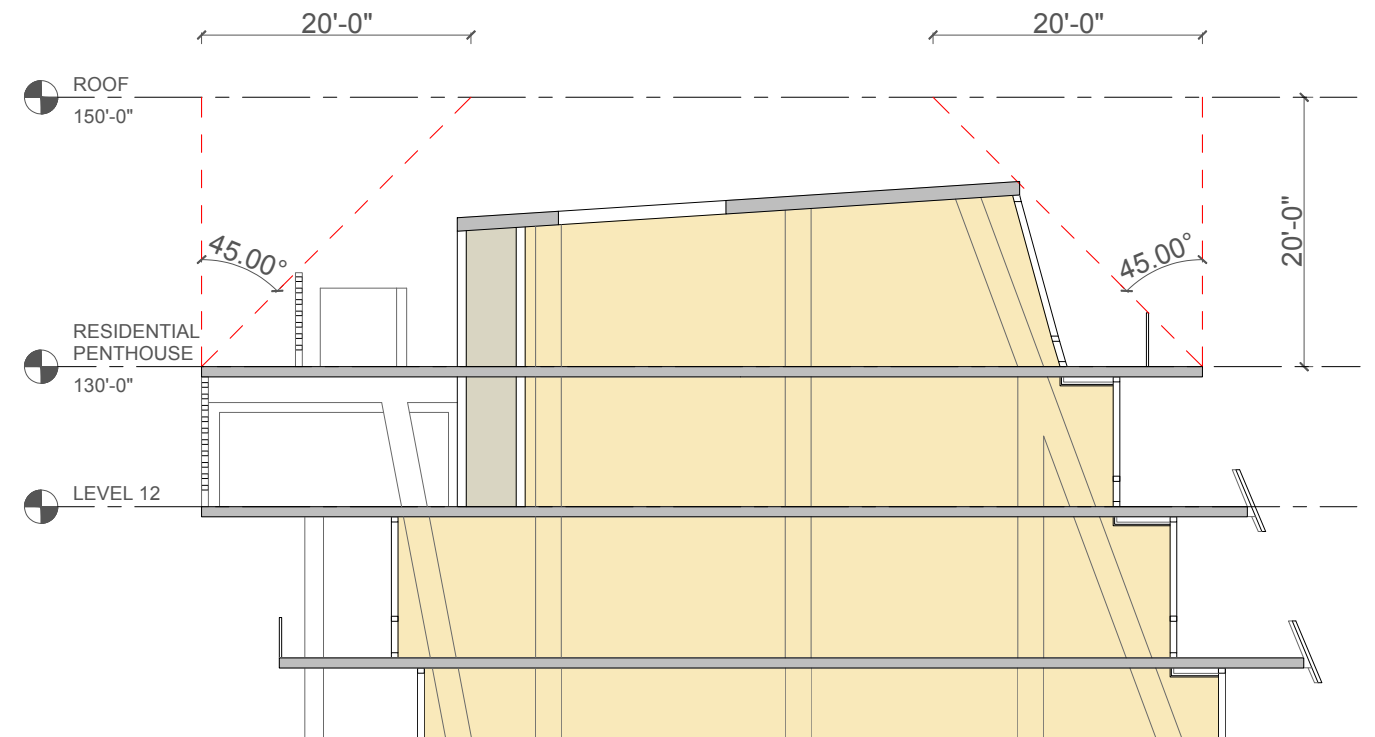
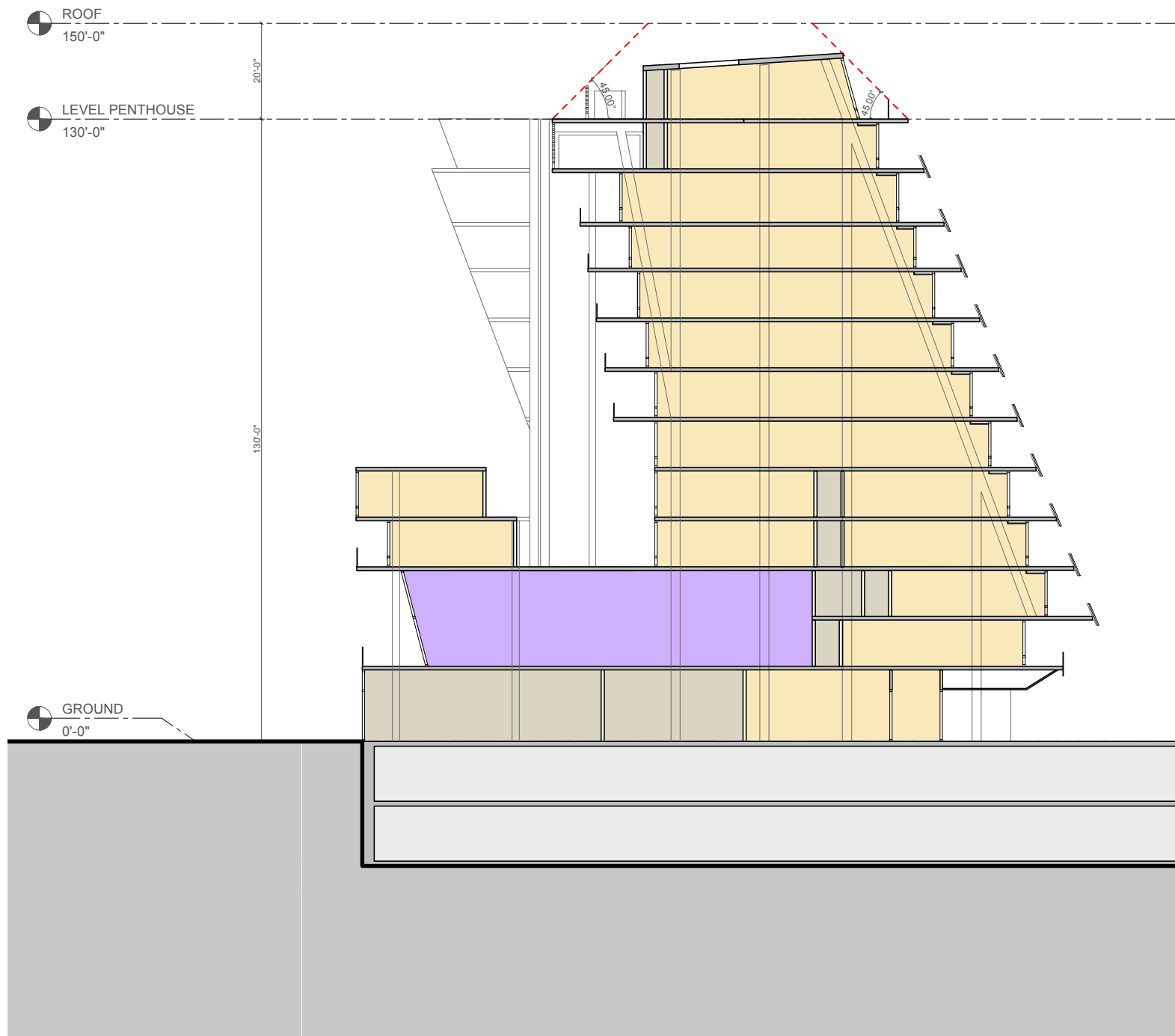
- EXTENSIVE GREEN ROOF
- AMENITY
- CORE/CORRIDOR
- TERRACE/BALCONY





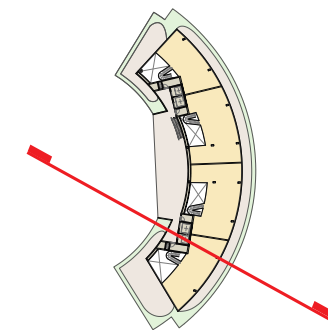
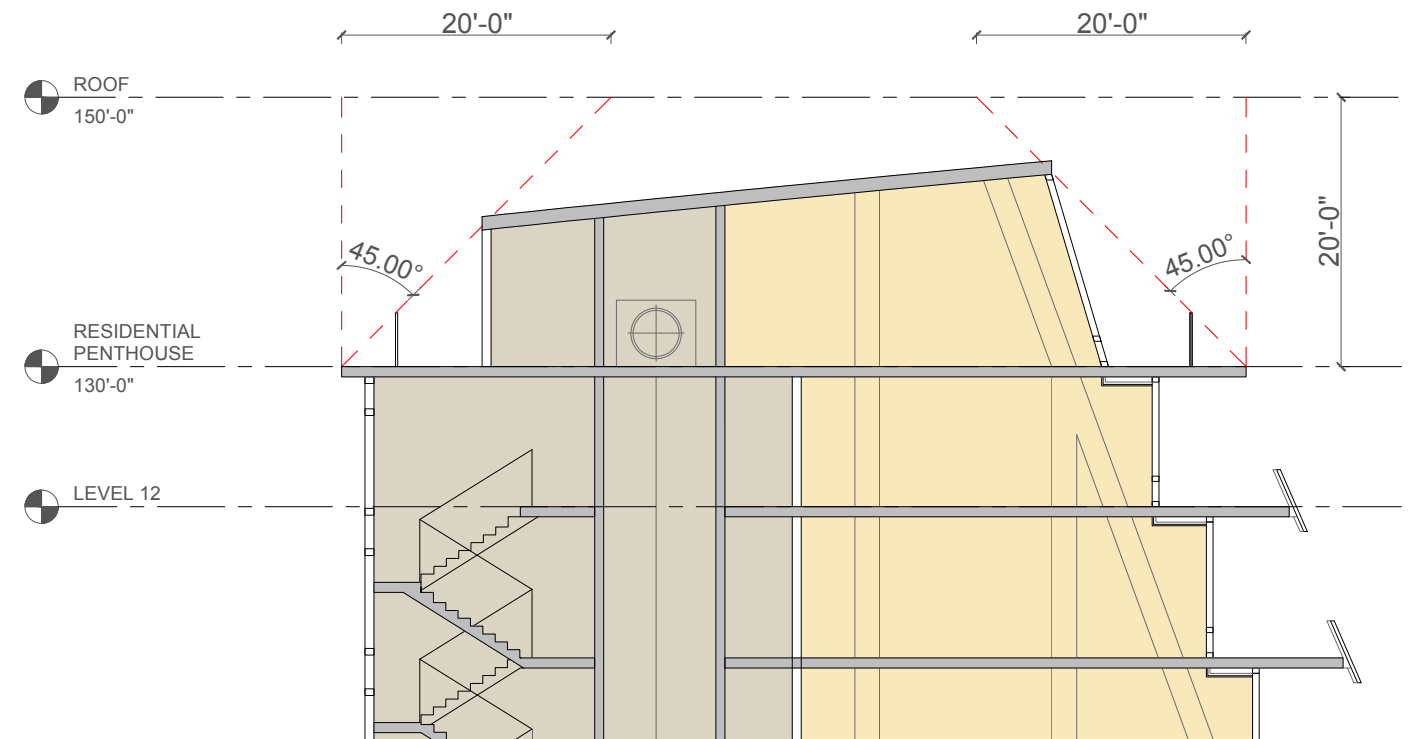
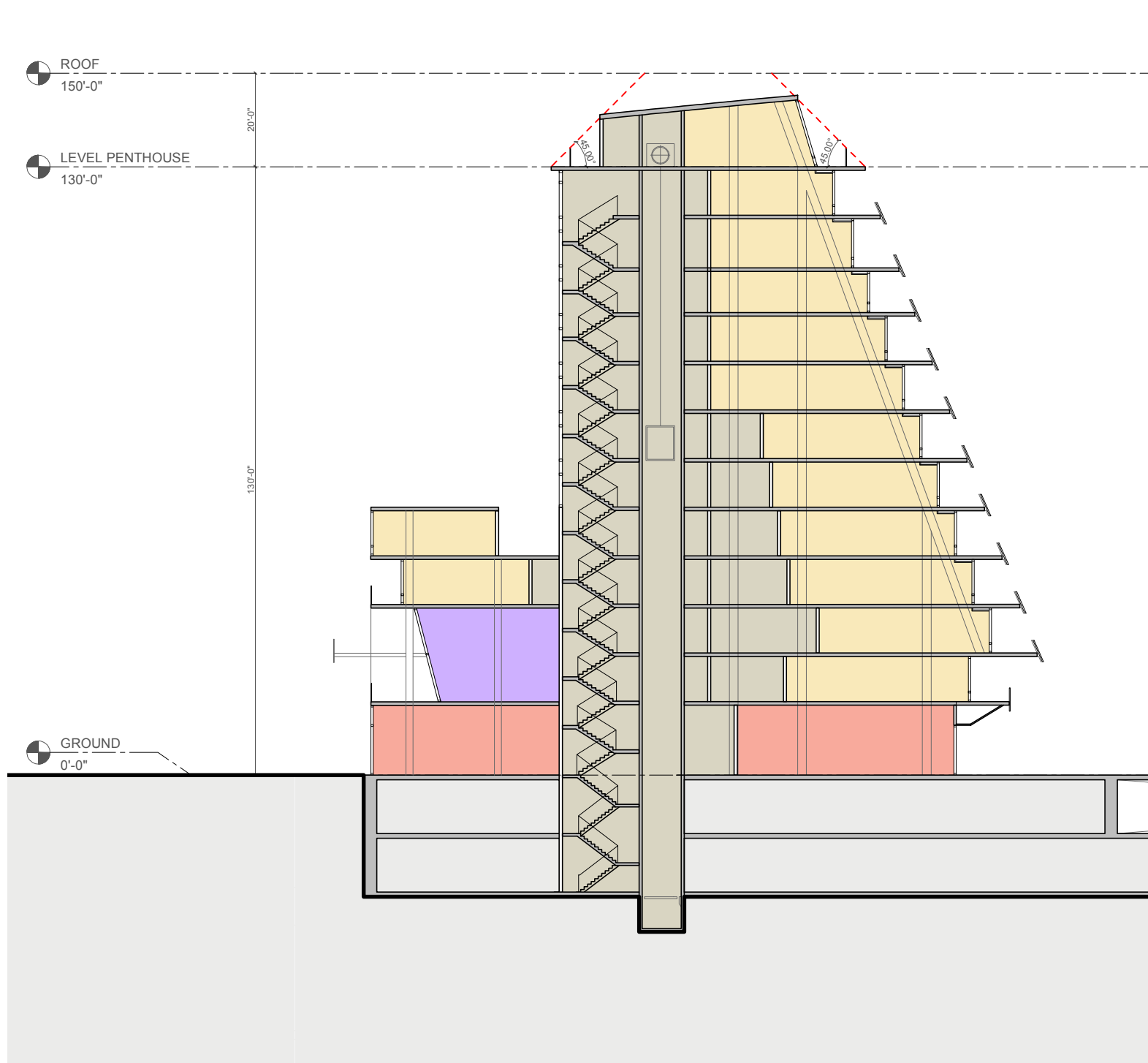
LEGEND

- RESIDENTIAL
- RETAIL
- AMENITY
- PARKING
- CORE/CIRCULATION



LEGEND

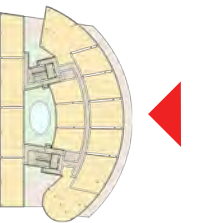
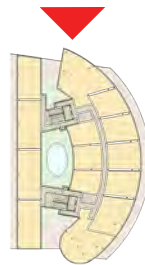
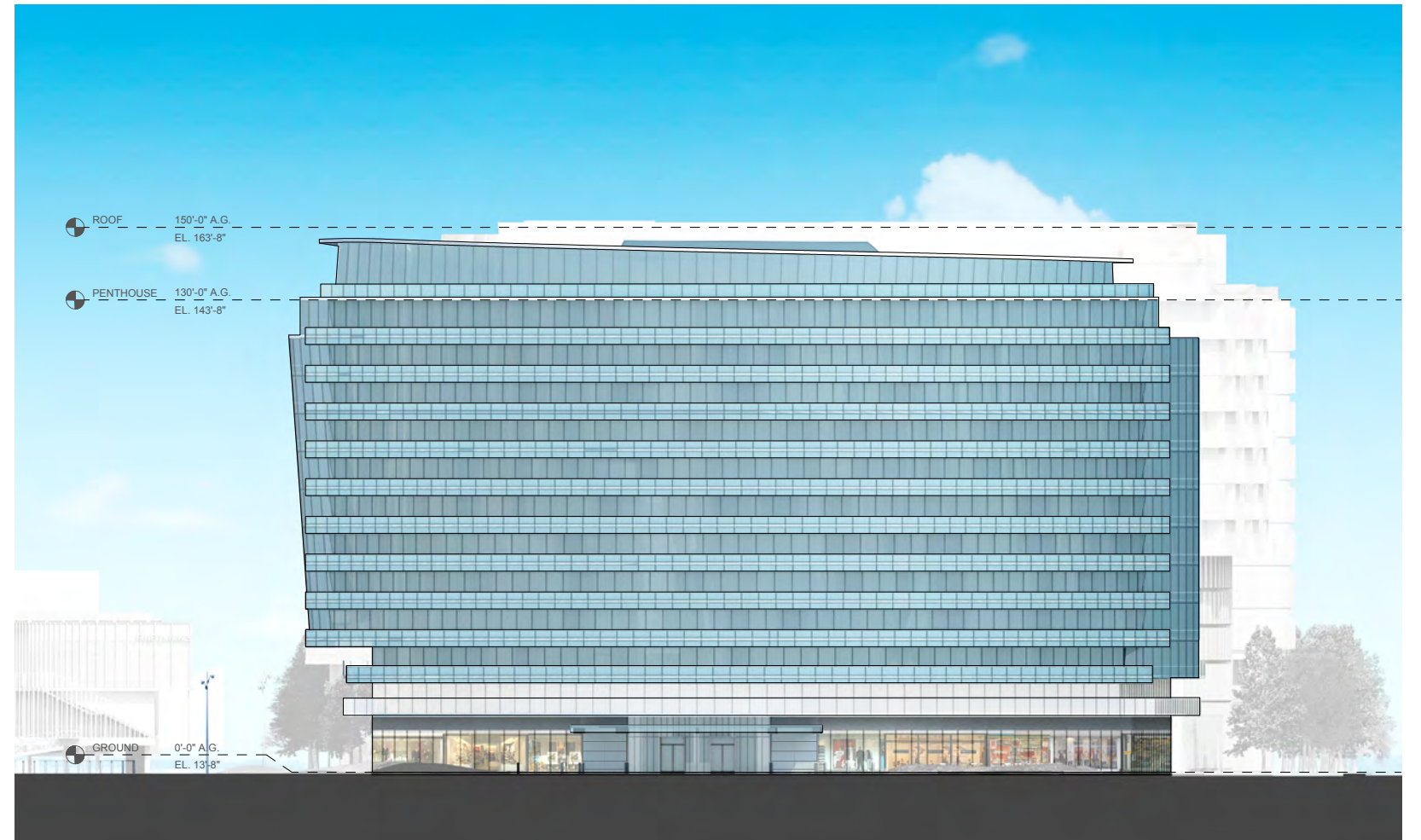
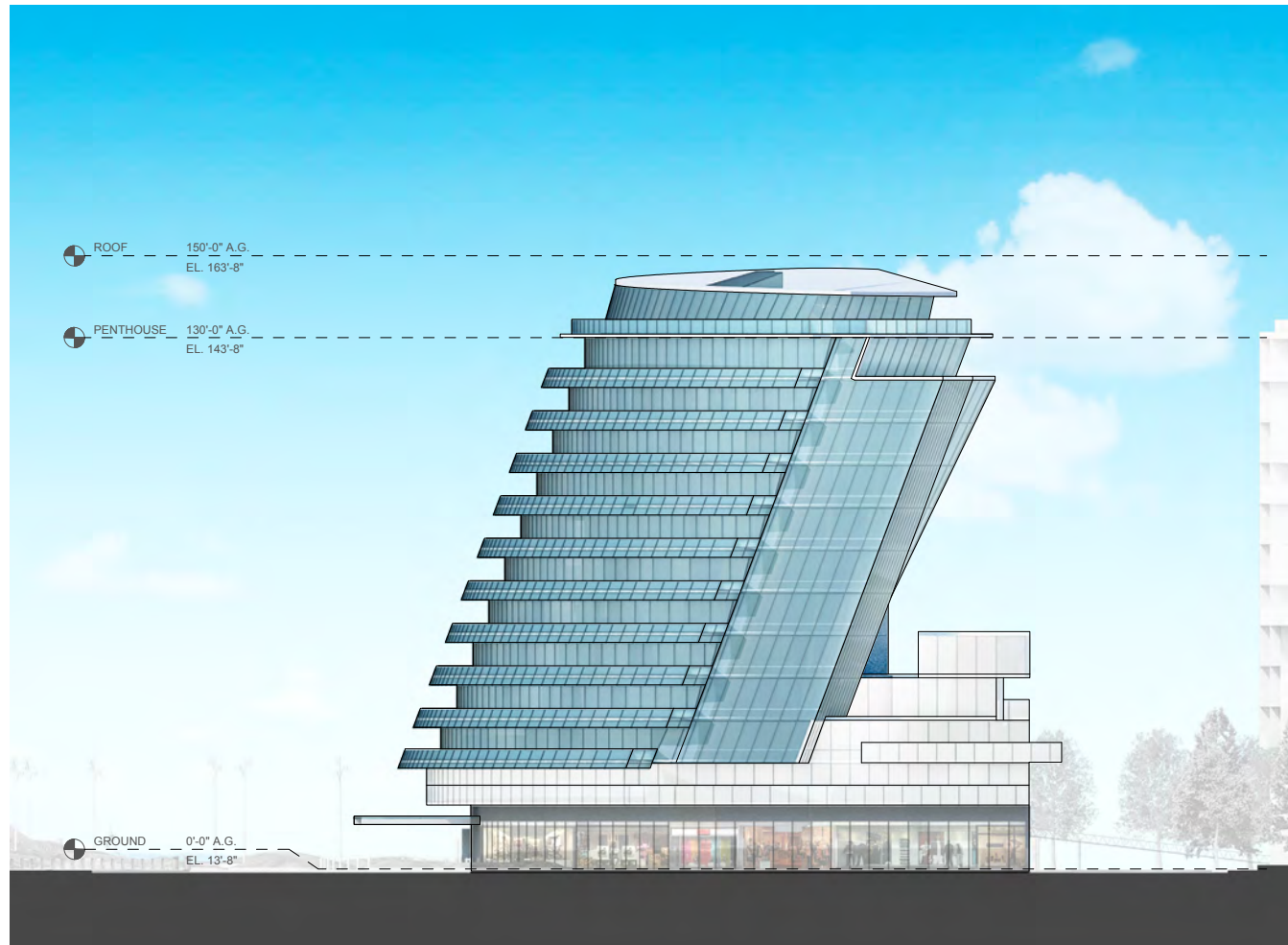
- RESIDENTIAL
- RETAIL
- AMENITY
- PARKING
- CORE/CIRCULATION

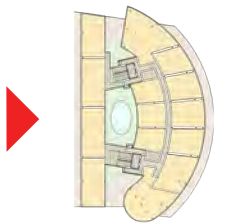
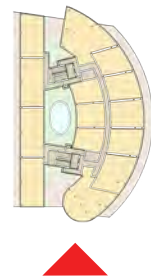
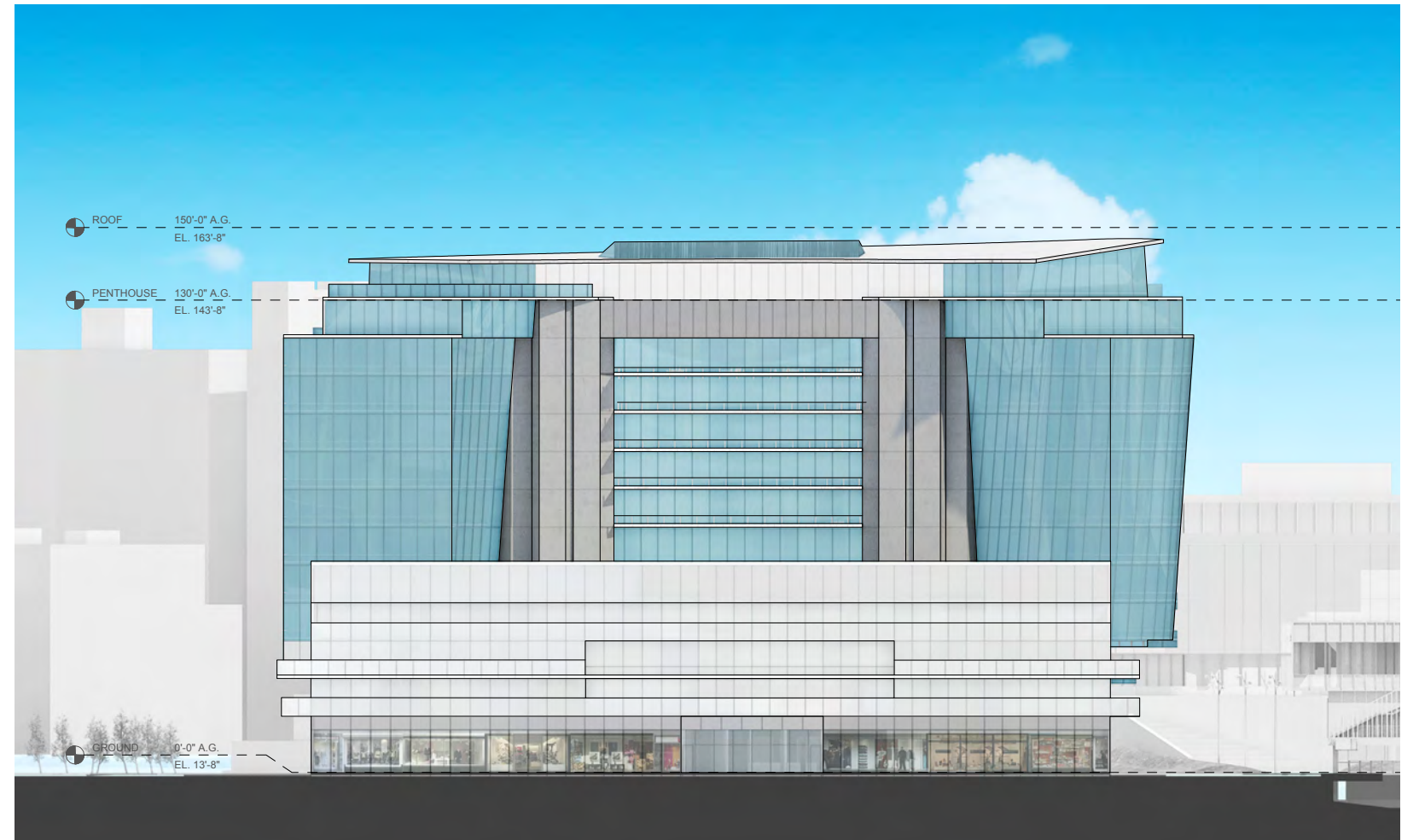
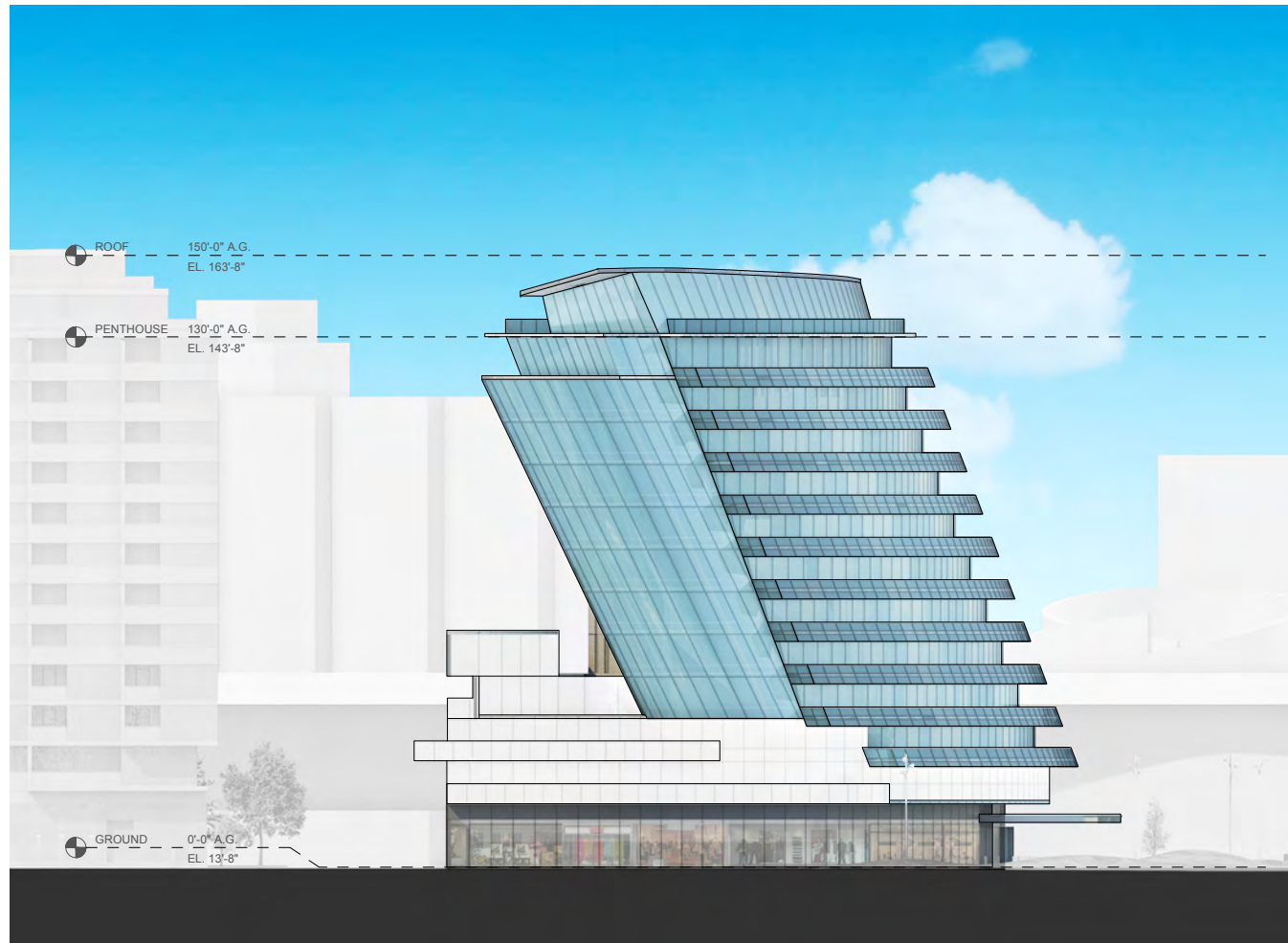


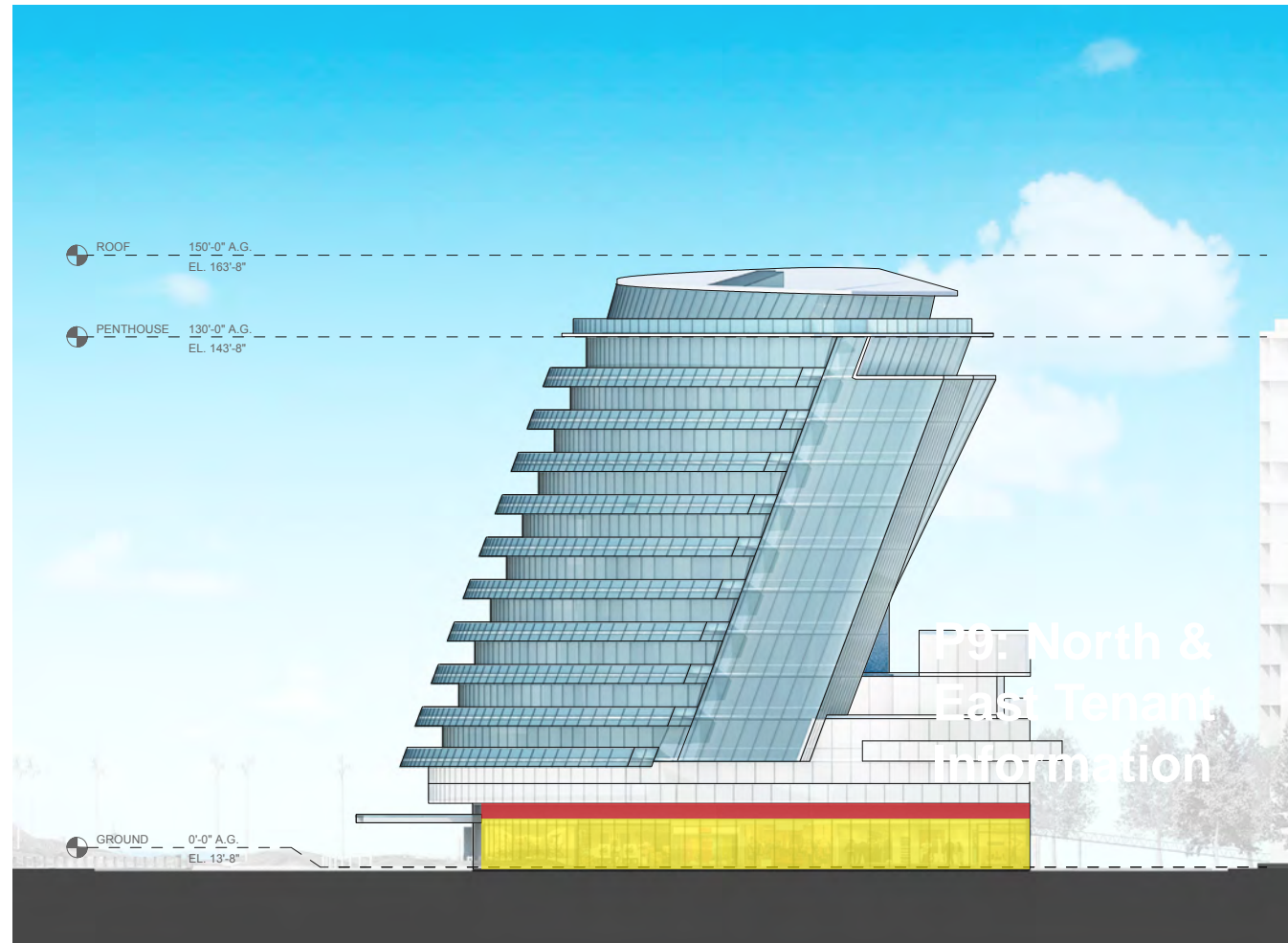
LEGEND

- RESIDENTIAL
- RETAIL
- AMENITY
- PARKING
- CORE/CIRCULATION

PAGE INTENTIONALLY LEFT BLANK



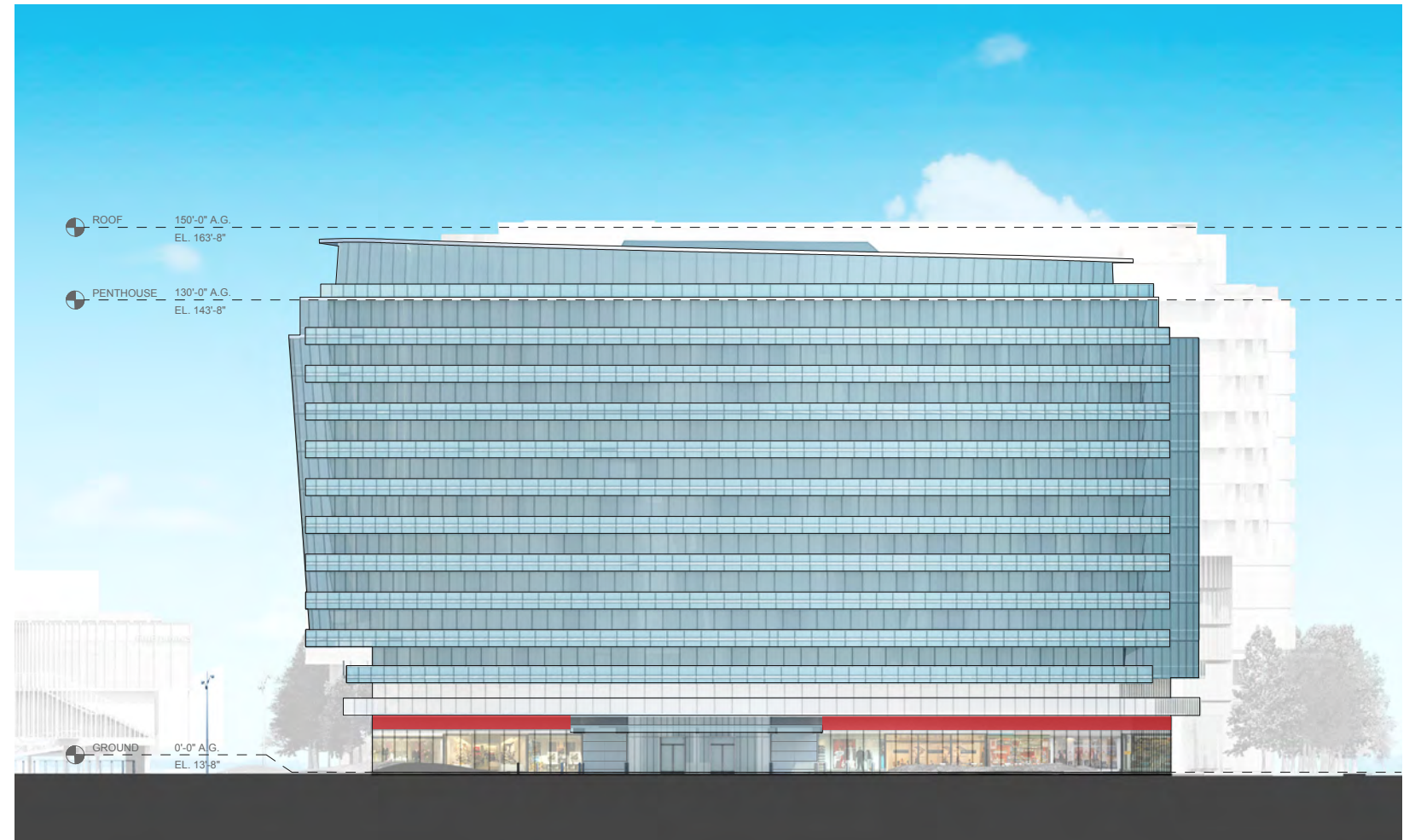




M STREET LANDING

RETAIL FRONTAGE

MARINA WAY



THE WHARF

RETAIL FRONTAGE

LOBBY
GATED CAR LIFTS

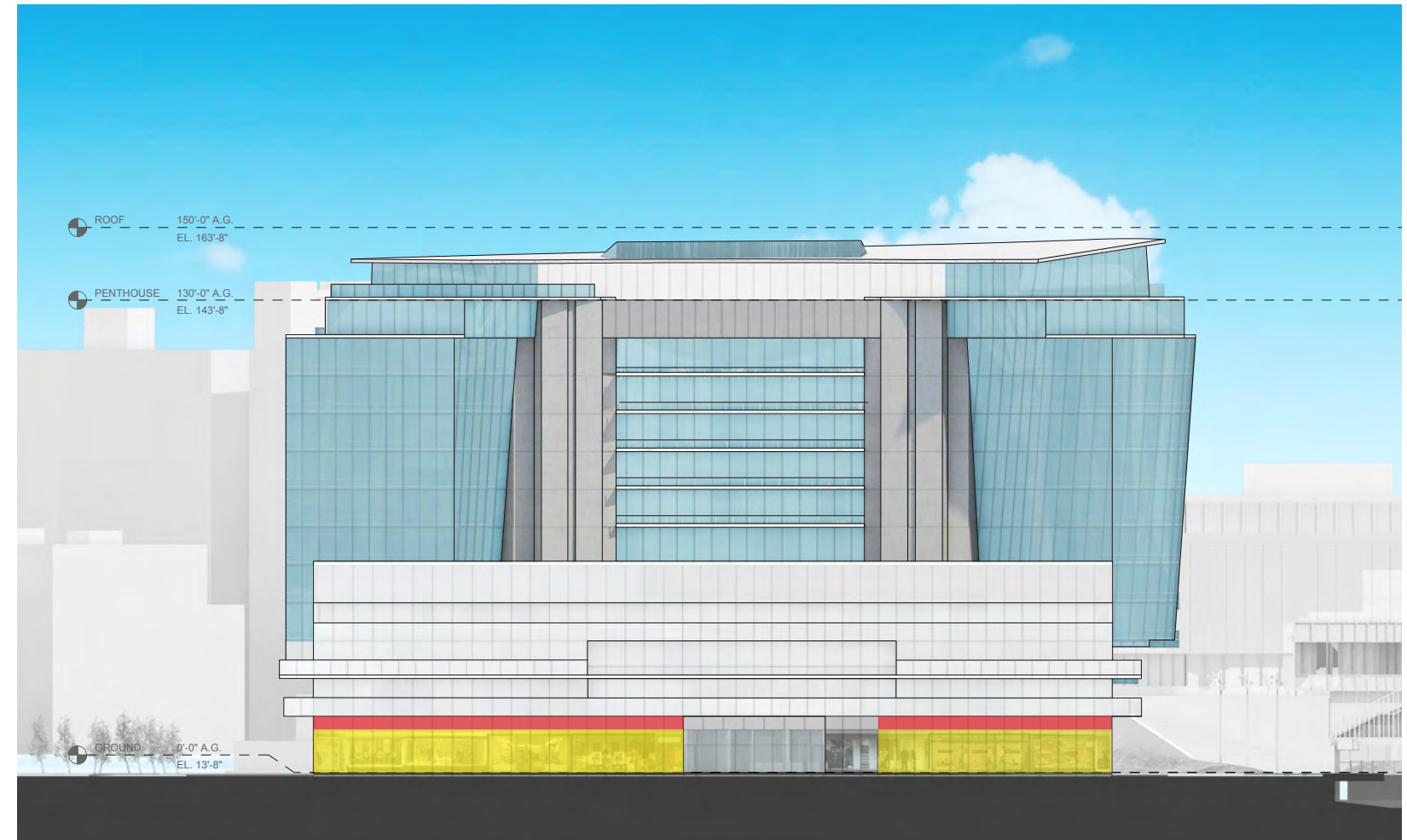
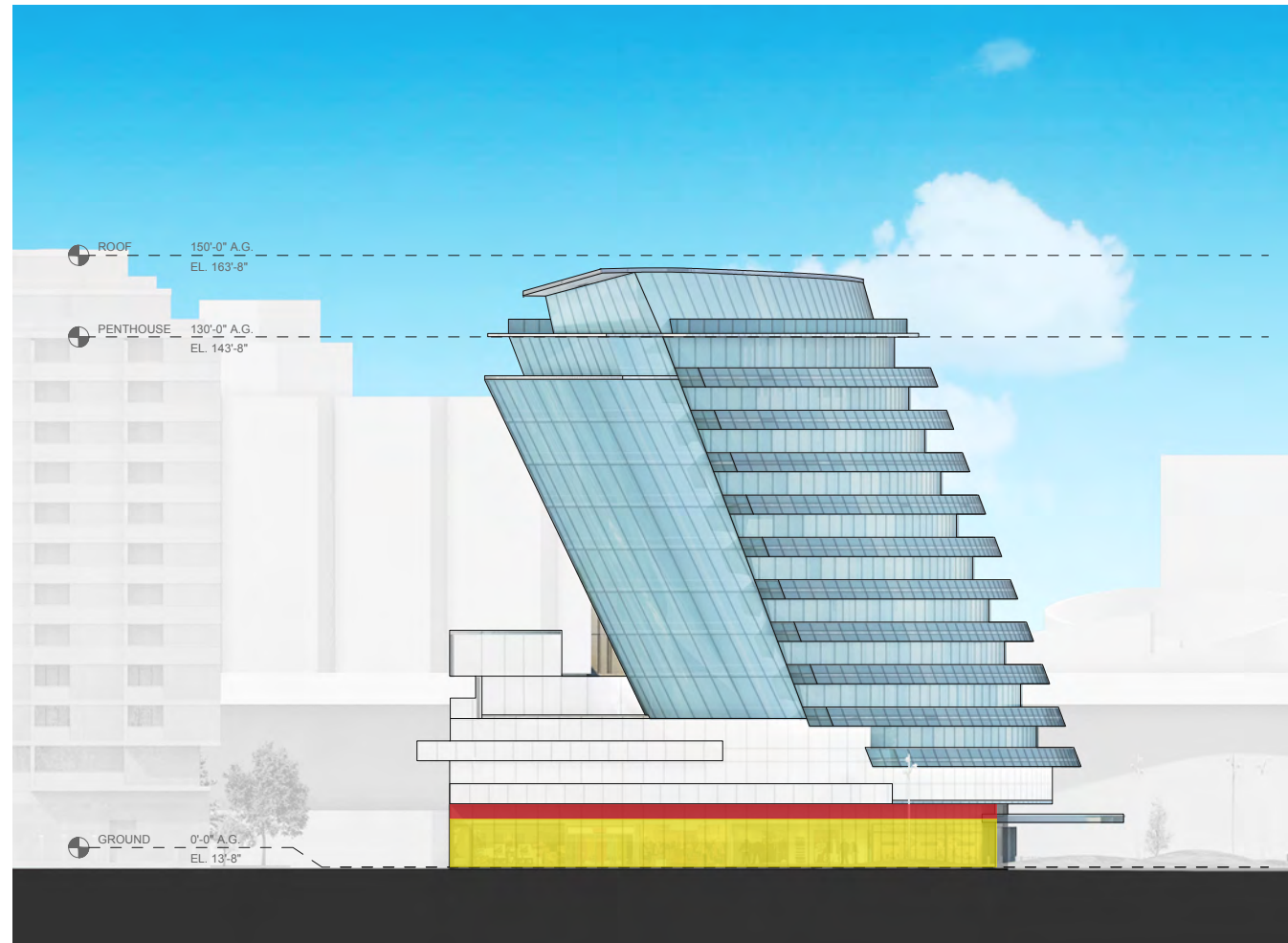
RETAIL FRONTAGE

MAINE AVE

POTENTIAL TENANT SIGNAGE LOCATIONS

POTENTIAL TENANT ENCLOSURE

1. RETAIL SIGNAGE PLACEMENT IS FOR ILLUSTRATIVE PURPOSES ONLY. ACTUAL RETAIL SIGNAGE PLACEMENT, EXTENT, AND DESIGN TO BE COORDINATED WITH INDIVIDUAL TENANT(S)/OCCUPANT(S) REQUIREMENTS. RETAIL SIGNAGE TO BE DESIGNED AND CONSTRUCTED IN ACCORDANCE WITH THE DC BUILDING CODE AND SIGN REGULATIONS IN EFFECT AT THE TIME OF PERMITTING, INCLUDING REGULATIONS APPLICABLE TO DESIGNATED ENTERTAINMENT AREAS, IF APPLICABLE.
2. GROUND FLOOR RETAIL BAY ELEVATIONS AND STOREFRONT ENTRANCES ARE ILLUSTRATIVE AND INTENDED TO DESCRIBE THE CHARACTER AND SCALE FOR THE BASE OF THE BUILDING. THE ACTUAL RETAIL BAY ELEVATIONS WILL BE DEVELOPED BY INDIVIDUAL RETAIL TENANT(S)/OCCUPANTS, SUBJECT TO APPROVAL BY THE BUILDING OWNER. GROUND FLOOR RETAIL BAY ELEVATIONS AND STOREFRONT ENTRANCES ARE SUBJECT TO CHANGE WITH EACH NEW TENANT THAT OCCUPIES A PARTICULAR RETAIL SPACE
3. TENANT SIGNAGE DESIGN SHALL BE COMPATIBLE WITH AND COMPLEMENT THE BUILDING ARCHITECTURE, BE COORDINATED WITH THE BUILDING FAÇADE SYSTEM, AND CONSIST OF HIGH-QUALITY MATERIALS.
4. RETAIL SIGNAGE AND TENANT SIGNAGE MAY CONTAIN LETTERS AND/OR GRAPHIC LOGOS, AND MAY BE SELF-ILLUMINATED OR BACK-LIT.

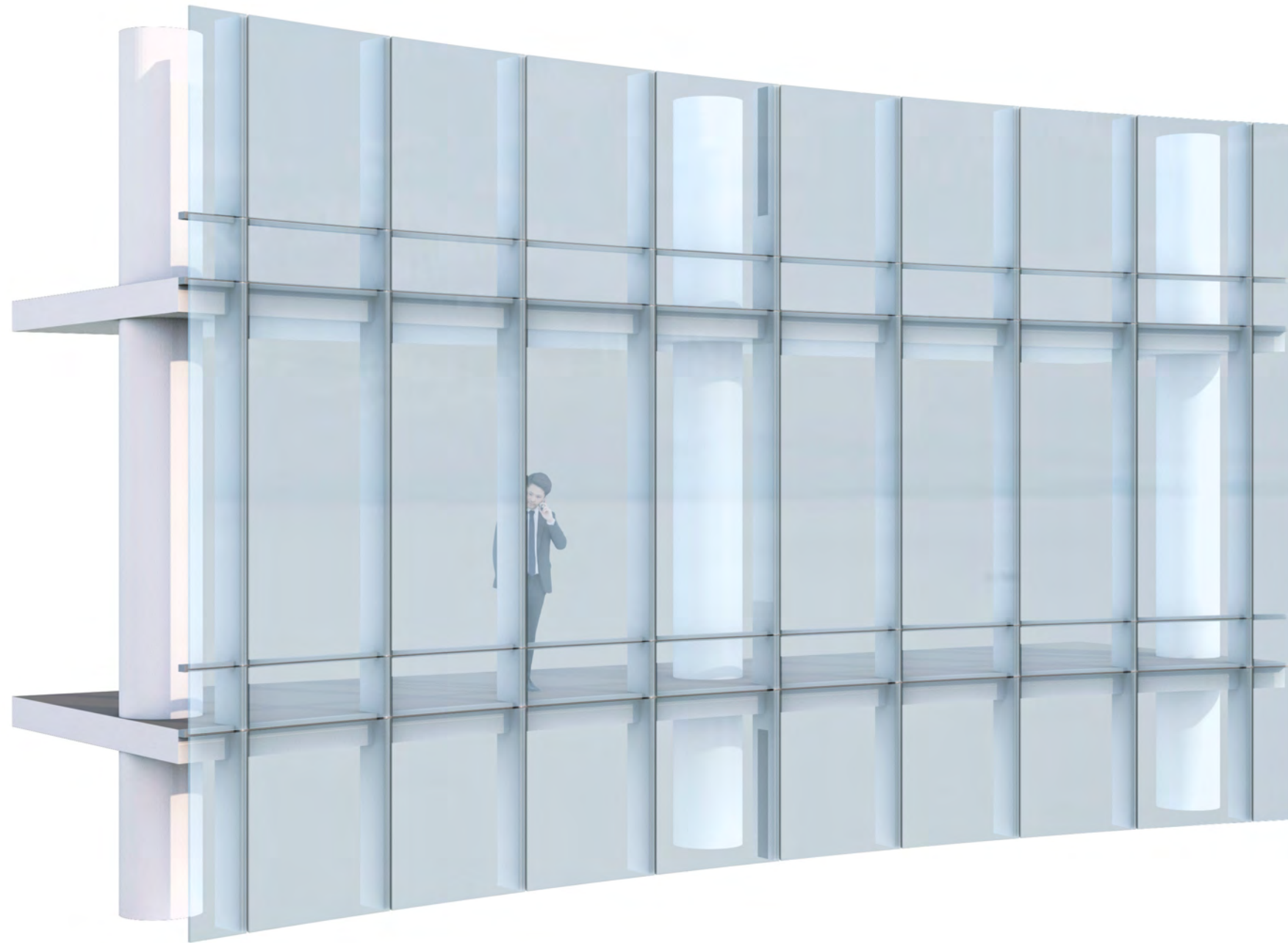
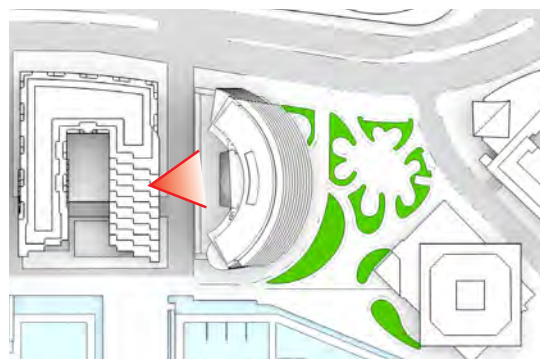
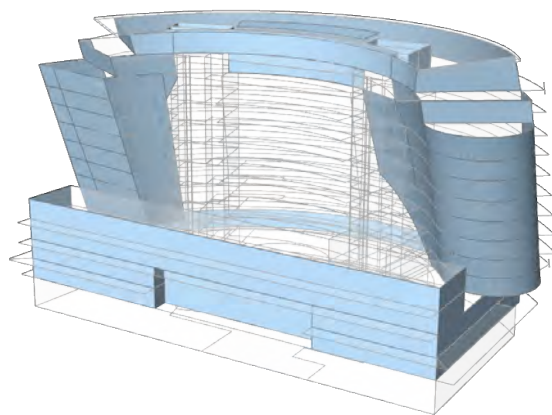


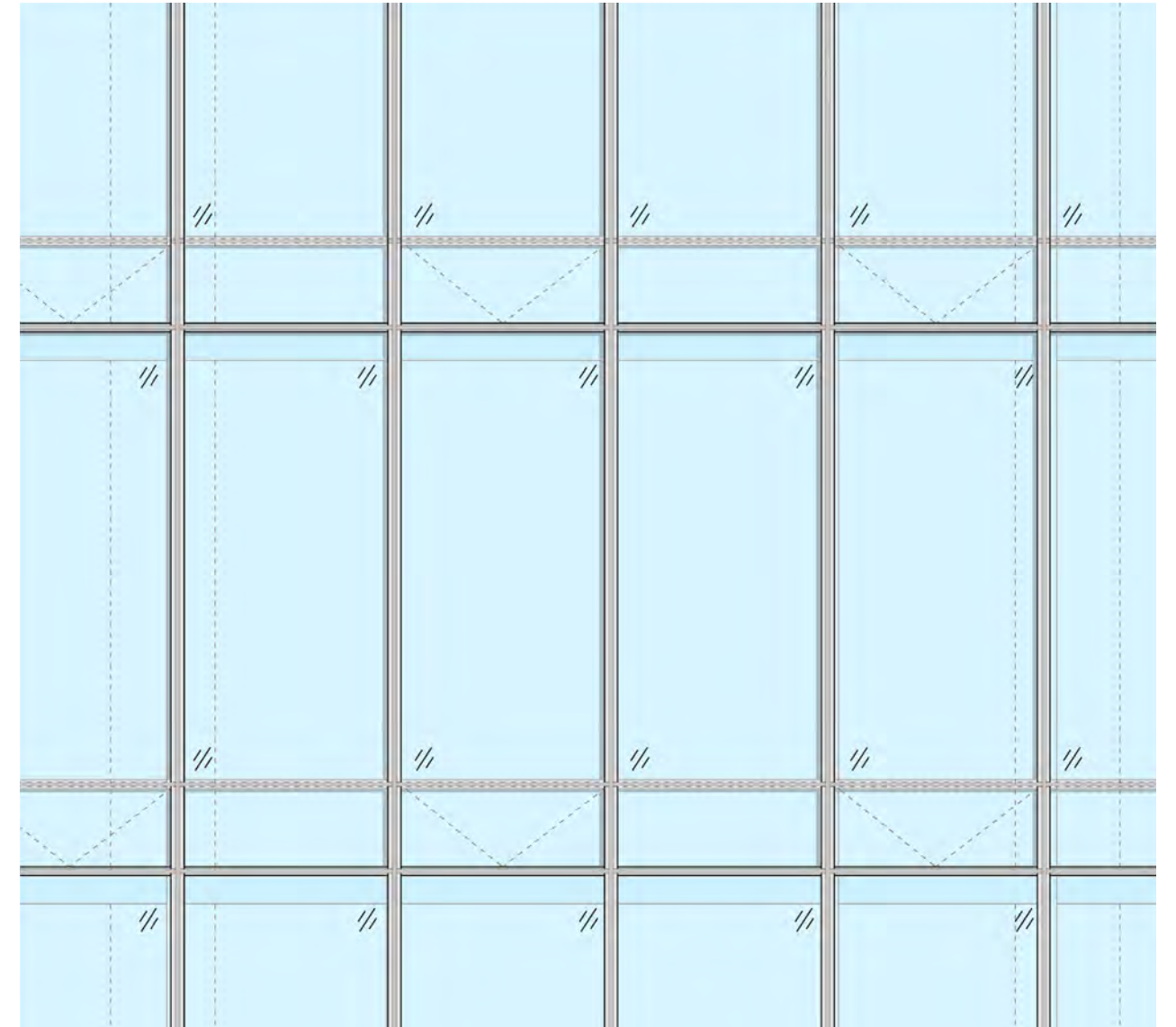
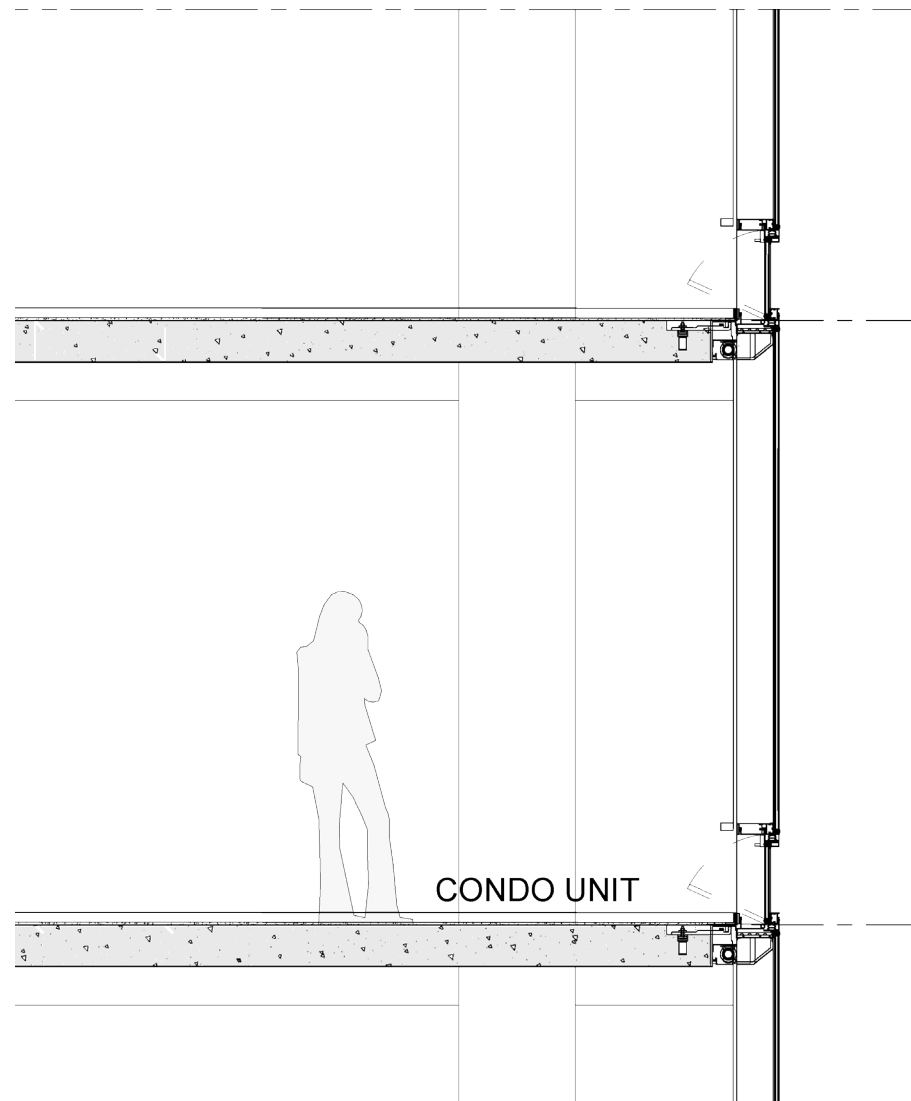
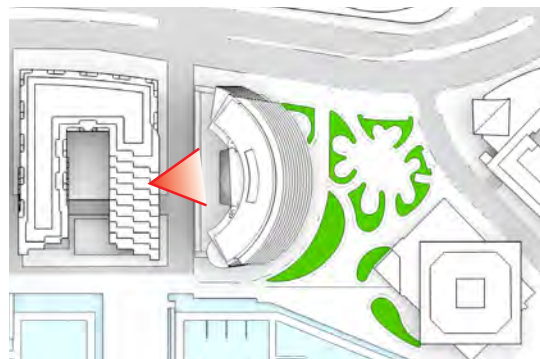
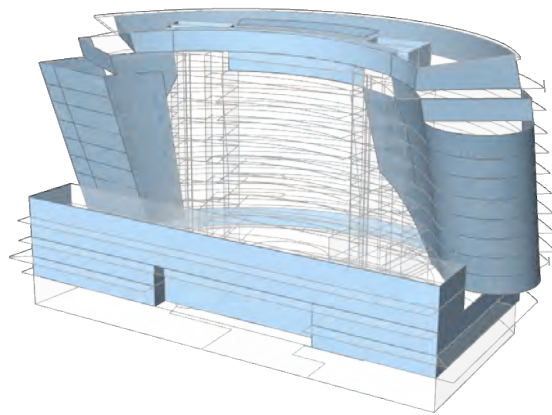
PARCEL 8 | MARINA WAY | RETAIL FRONTAGE | M STREET LANDING

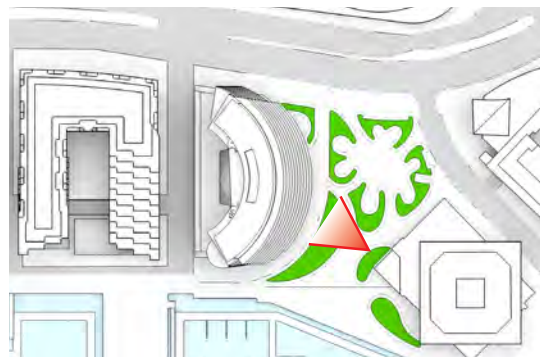
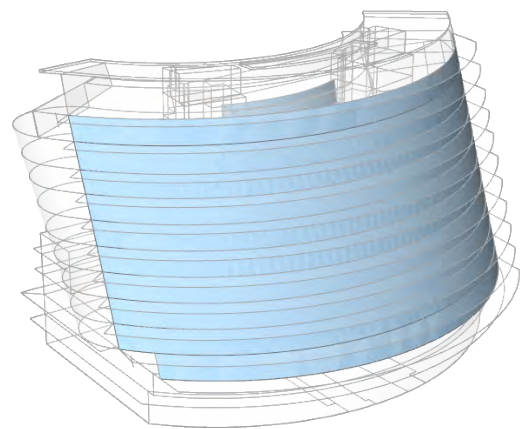
MAINE AVE | RETAIL FRONTAGE | LOADING DOCKS EGRESS | RETAIL FRONTAGE PUBLIC ELEVATOR & STAIRS | THE WHARF

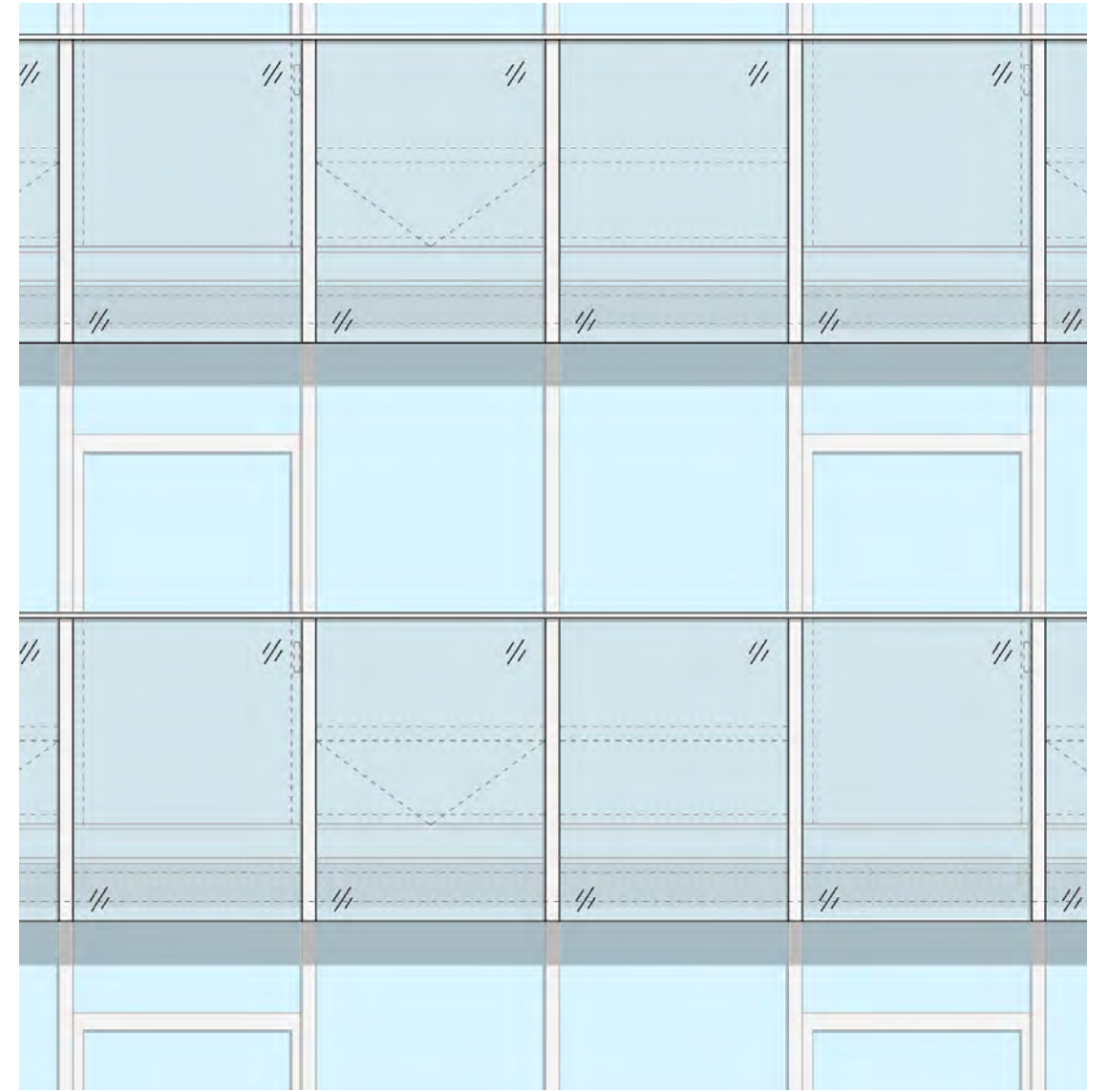
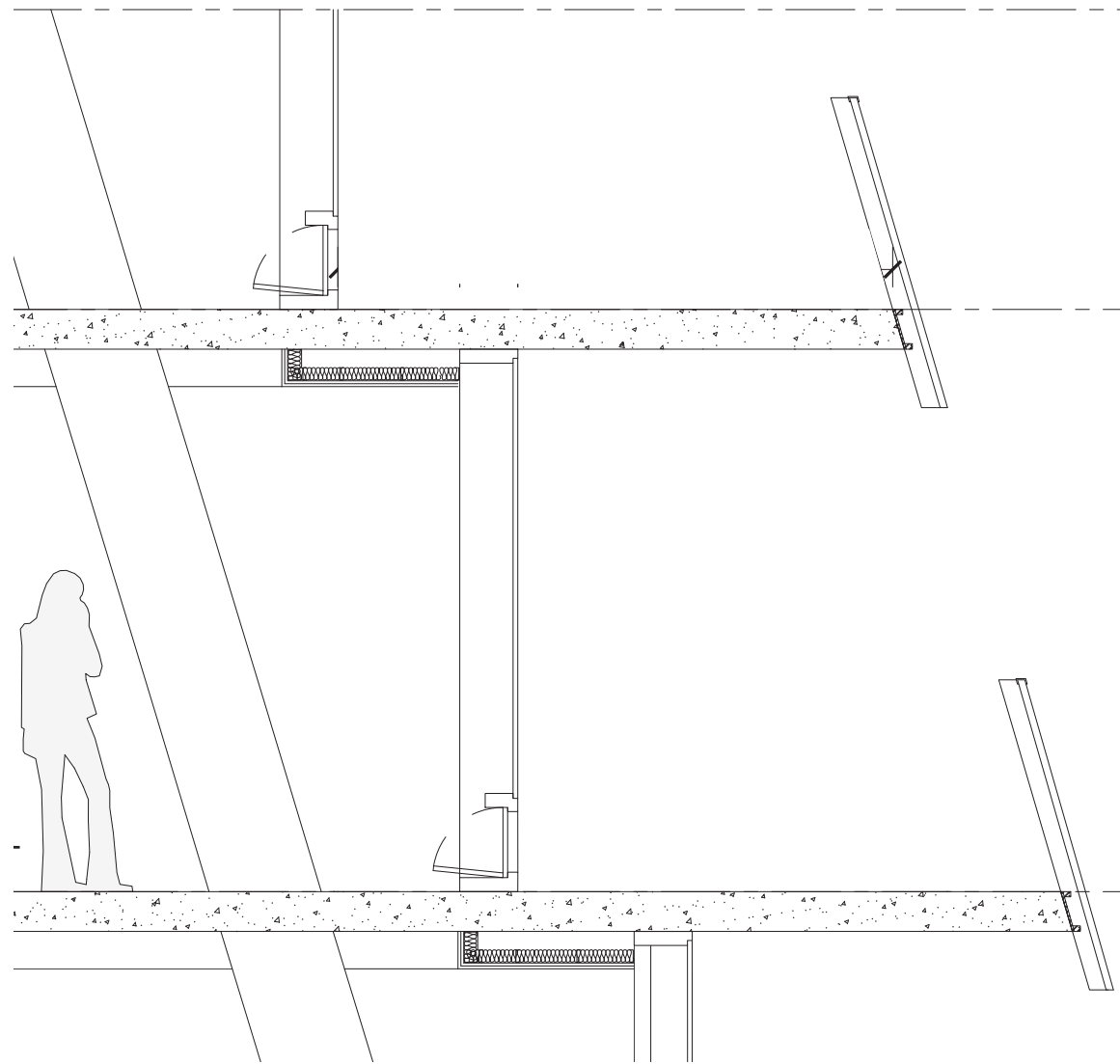
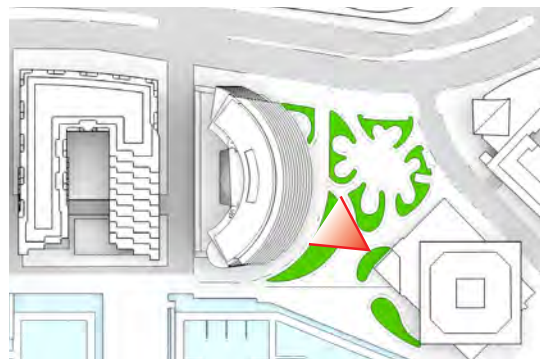
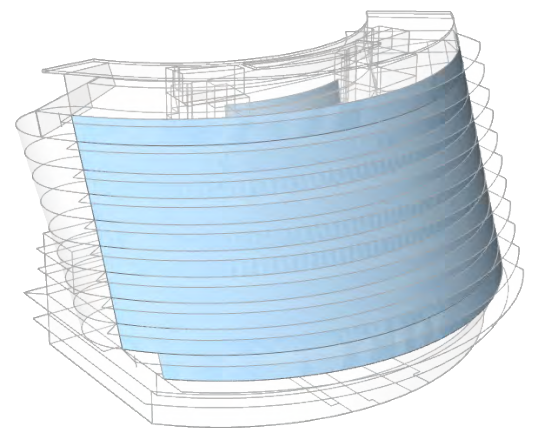
- POTENTIAL TENANT SIGNAGE LOCATIONS
- POTENTIAL TENANT ENCLOSURE

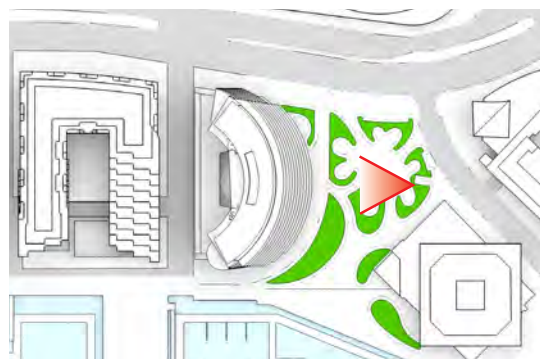
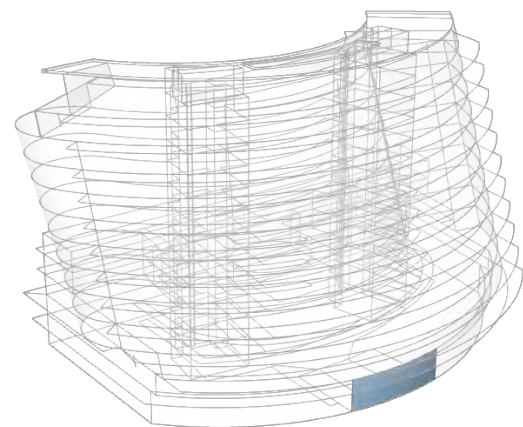
1. RETAIL SIGNAGE PLACEMENT IS FOR ILLUSTRATIVE PURPOSES ONLY. ACTUAL RETAIL SIGNAGE PLACEMENT, EXTENT, AND DESIGN TO BE COORDINATED WITH INDIVIDUAL TENANT(S)/OCCUPANT(S) REQUIREMENTS. RETAIL SIGNAGE TO BE DESIGNED AND CONSTRUCTED IN ACCORDANCE WITH THE DC BUILDING CODE AND SIGN REGULATIONS IN EFFECT AT THE TIME OF PERMITTING, INCLUDING REGULATIONS APPLICABLE TO DESIGNATED ENTERTAINMENT AREAS, IF APPLICABLE.
2. GROUND FLOOR RETAIL BAY ELEVATIONS AND STOREFRONT ENTRANCES ARE ILLUSTRATIVE AND INTENDED TO DESCRIBE THE CHARACTER AND SCALE FOR THE BASE OF THE BUILDING. THE ACTUAL RETAIL BAY ELEVATIONS WILL BE DEVELOPED BY INDIVIDUAL RETAIL TENANT(S)/OCCUPANTS, SUBJECT TO APPROVAL BY THE BUILDING OWNER. GROUND FLOOR RETAIL BAY ELEVATIONS AND STOREFRONT ENTRANCES ARE SUBJECT TO CHANGE WITH EACH NEW TENANT THAT OCCUPIES A PARTICULAR RETAIL SPACE
3. TENANT SIGNAGE DESIGN SHALL BE COMPATIBLE WITH AND COMPLEMENT THE BUILDING ARCHITECTURE, BE COORDINATED WITH THE BUILDING FAÇADE SYSTEM, AND CONSIST OF HIGH-QUALITY MATERIALS.
4. RETAIL SIGNAGE AND TENANT SIGNAGE MAY CONTAIN LETTERS AND/OR GRAPHIC LOGOS, AND MAY BE SELF-ILLUMINATED OR BACK-LIT.

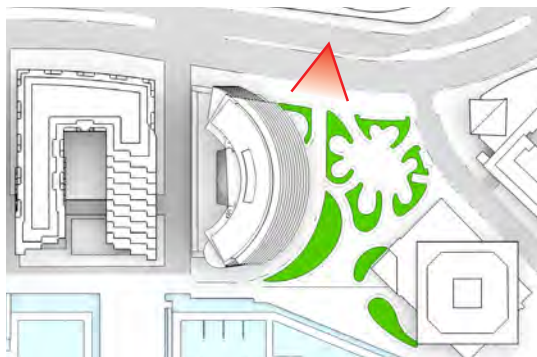
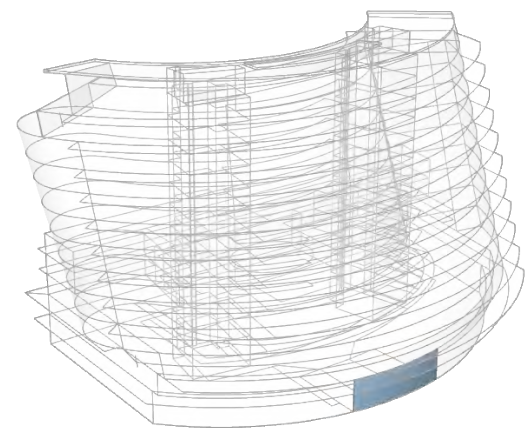


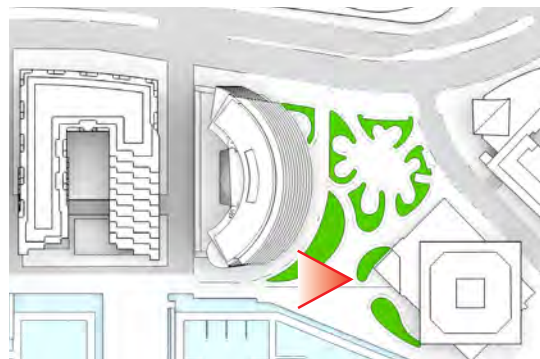
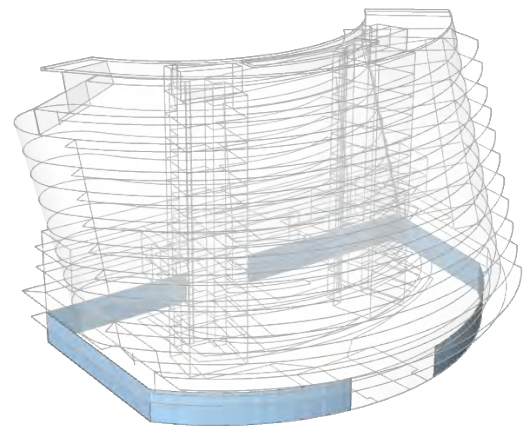


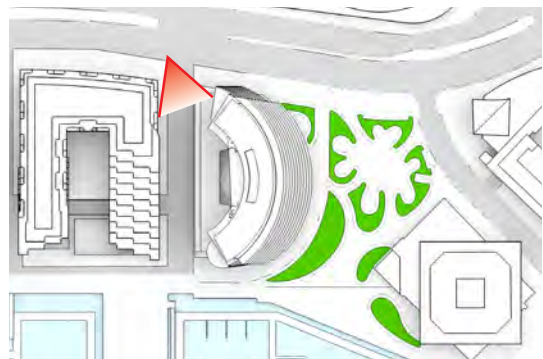
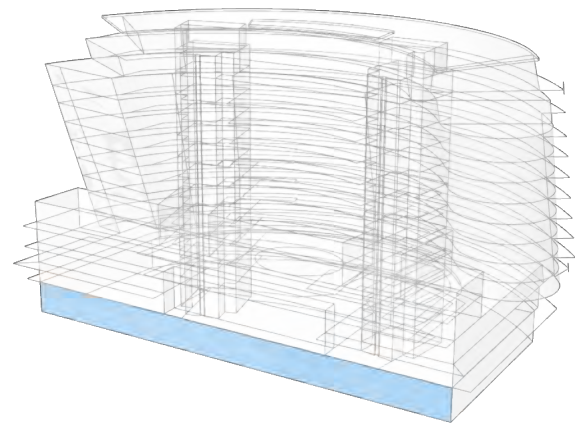














2.36

P9: Aerial View Looking West

SUPPLEMENTAL PREHEARING SUBMISSION | OCTOBER 13, 2017

DISTRICT
WHARF





1. BASE & PODIUM ENCLOSURE
LOW IRON GLASS

2. TOWER ENCLOSURE
CLEAR, BLUE TONE GLASS

3. CORES & EXTERIOR WALLS
EXPOSED CONCRETE

4. TERRACES
50% RESINOUS FLOORING
50% EXTENSIVE GREEN ROOF

