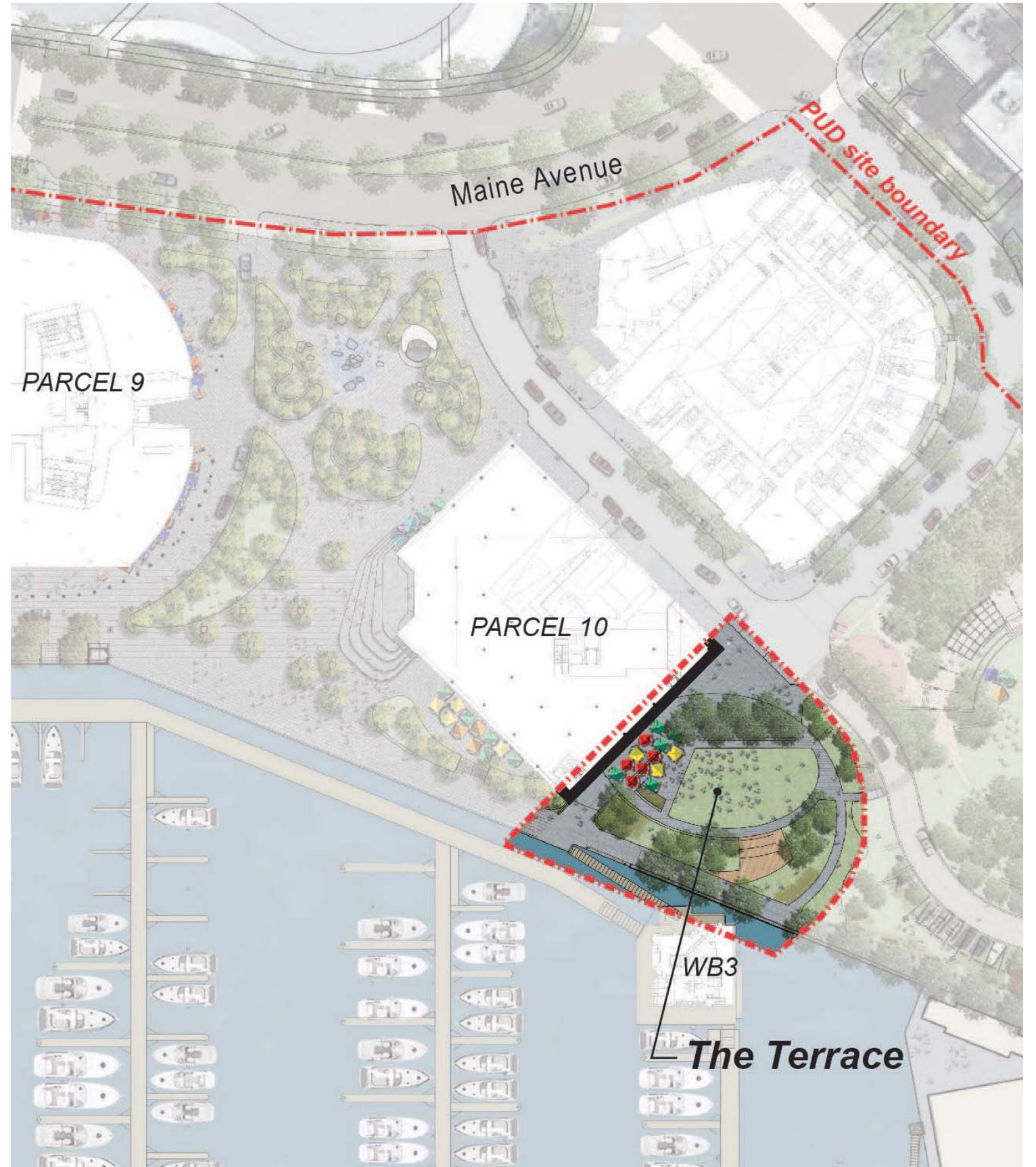


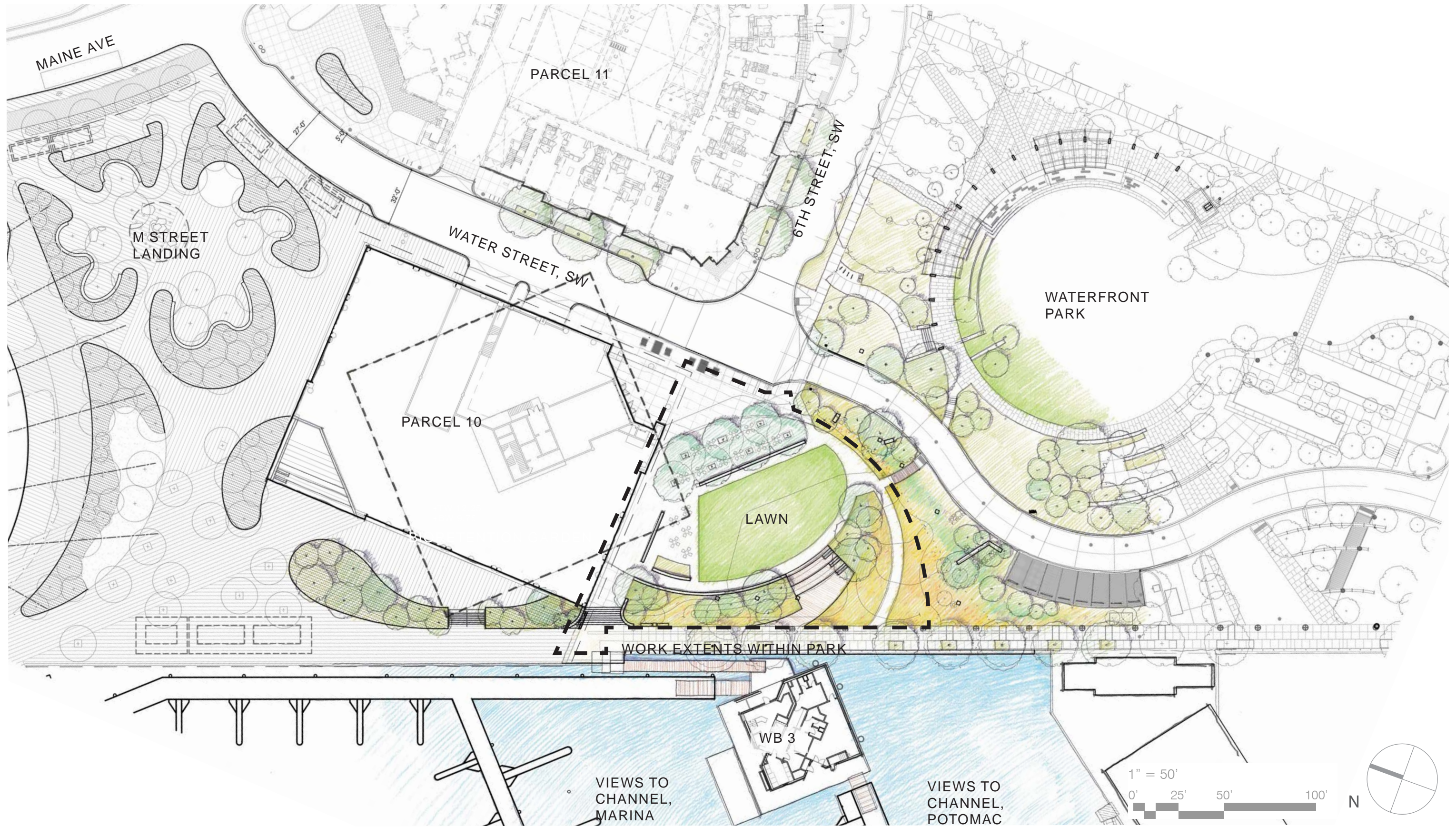
- THE TERRACE
- M STREET LANDING

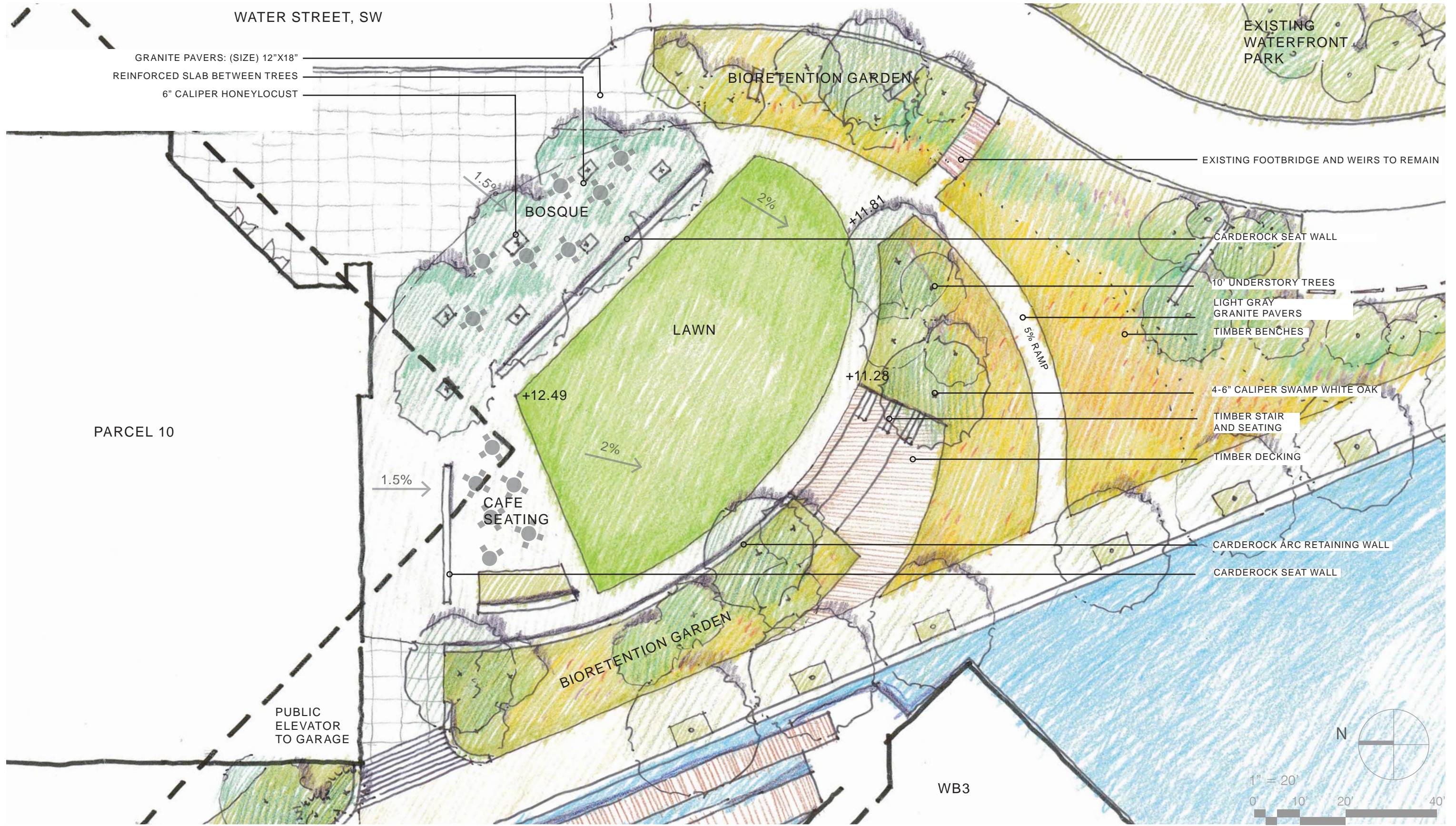
OPEN SPACE





LIMIT OF IMPACT TO
TEMPORARY PHASE 1
LANDSCAPE







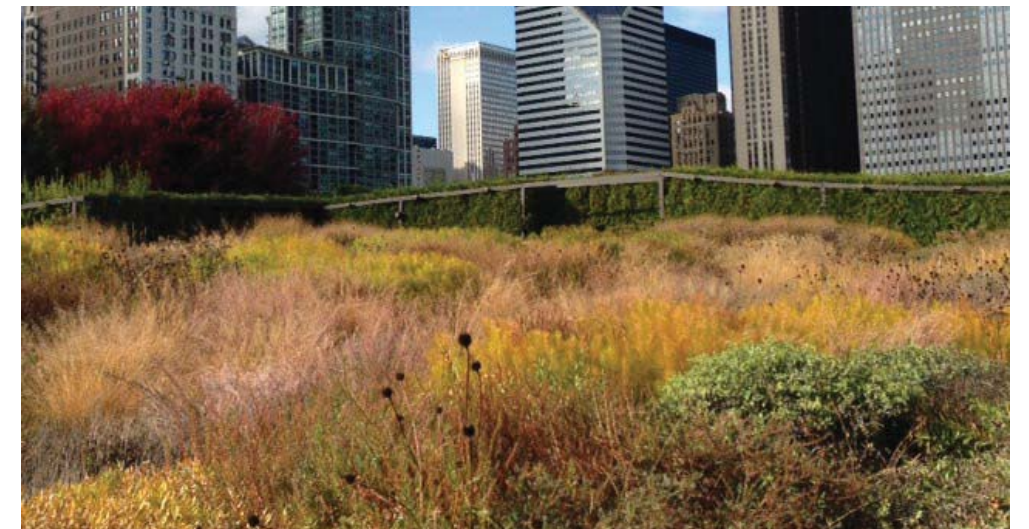
Canopy Trees (*Black Gum, Nyssa sylvatica* in fall)



Understory Trees (*Redbud, Cercis canadensis*, in spring)



Seating lawn with canopy trees to frame views to Washington Channel



Low grasses and perennials in fall



Canopy Tree (*Swamp White Oak, Quercus bicolor* in fall)



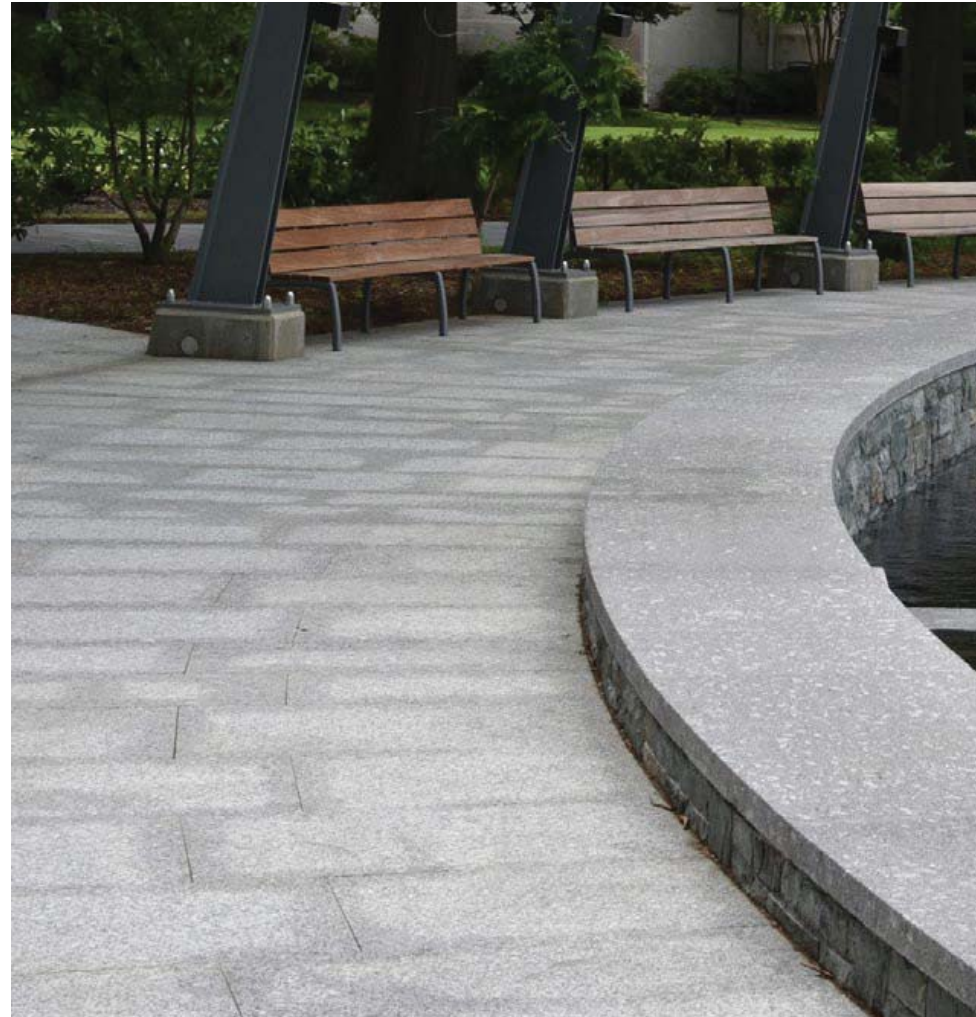
Understory Trees (*Serviceberry, Amelanchier arborea*, in spring)



Low grasses and perennials in spring



Flexible cafe seating



Curved site wall and Greene County granite paving (Waterfront Park)



Carderock seat wall (Waterfront Park)



Stepped kebono seating



Greene County granite and carderock seatwall (Waterfront Park)

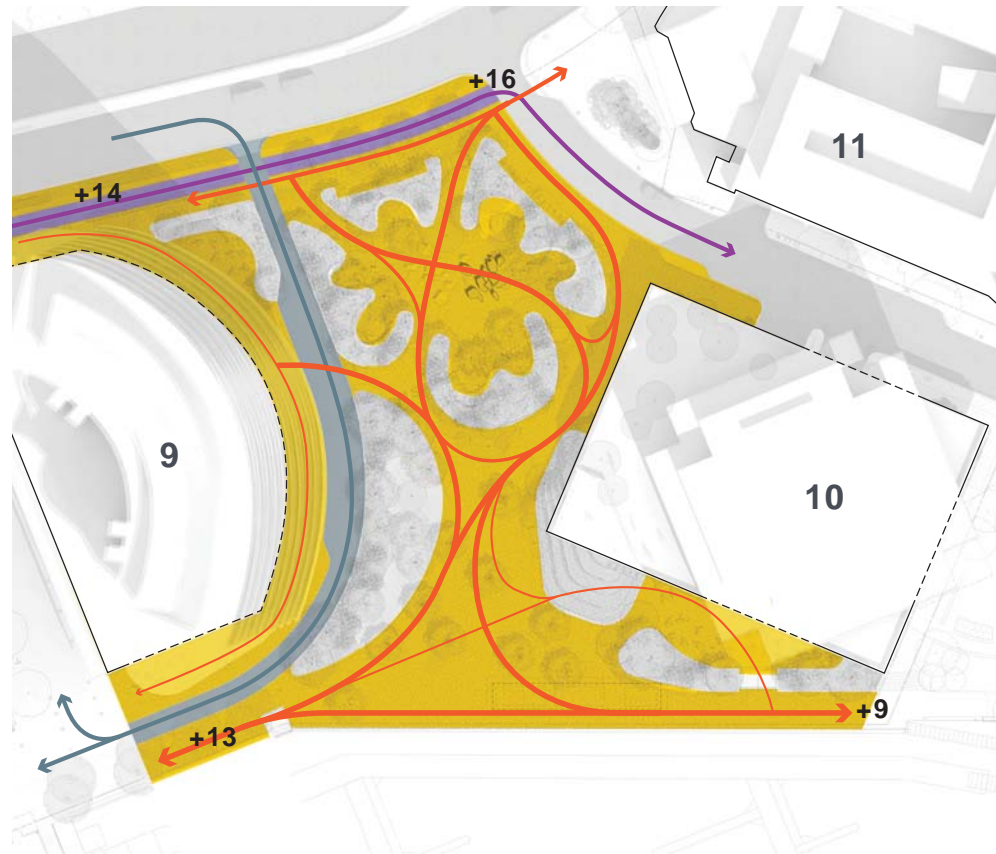


Kebony decking and bioretention planting





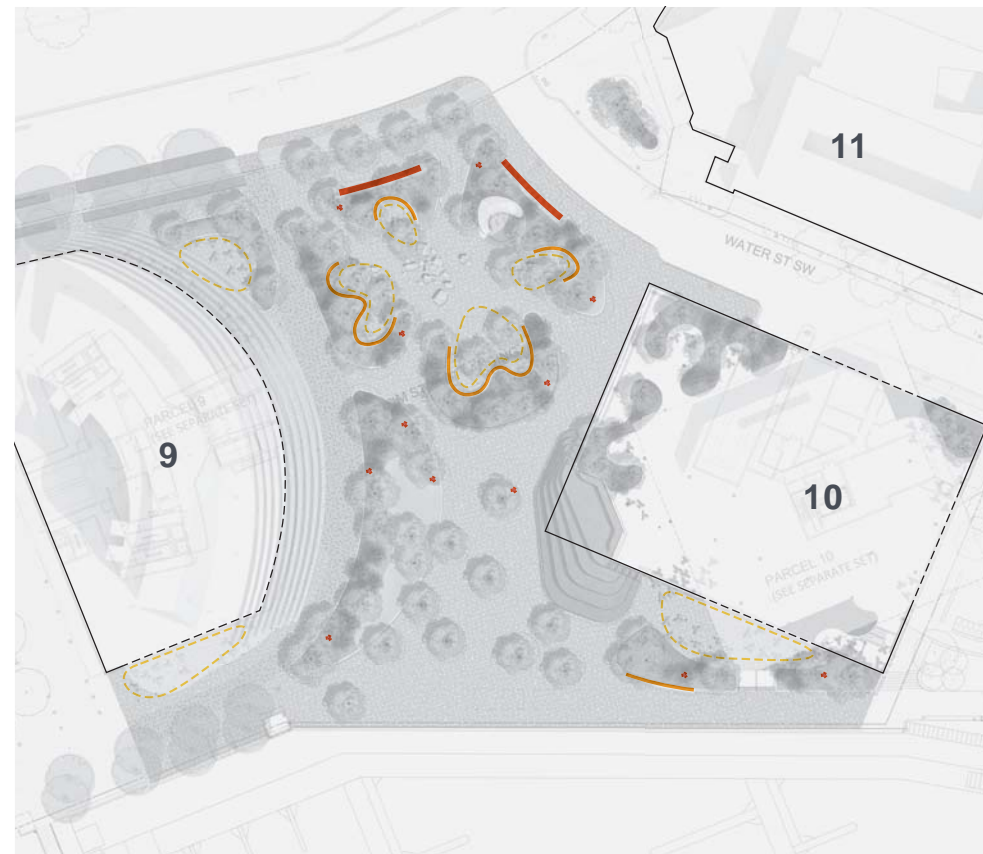




PAVEMENT & CIRCULATION

Circulation has been designed to shape memorable connections to the waterfront promenade through the site, including options to engage and enjoy Fountain Plaza, or walk around it if it is busy with activities. Rectangular concrete pavers are used in sweeps of both light and dark tones, with areas of solid tone that come together in an irregular patterning of dark and light.

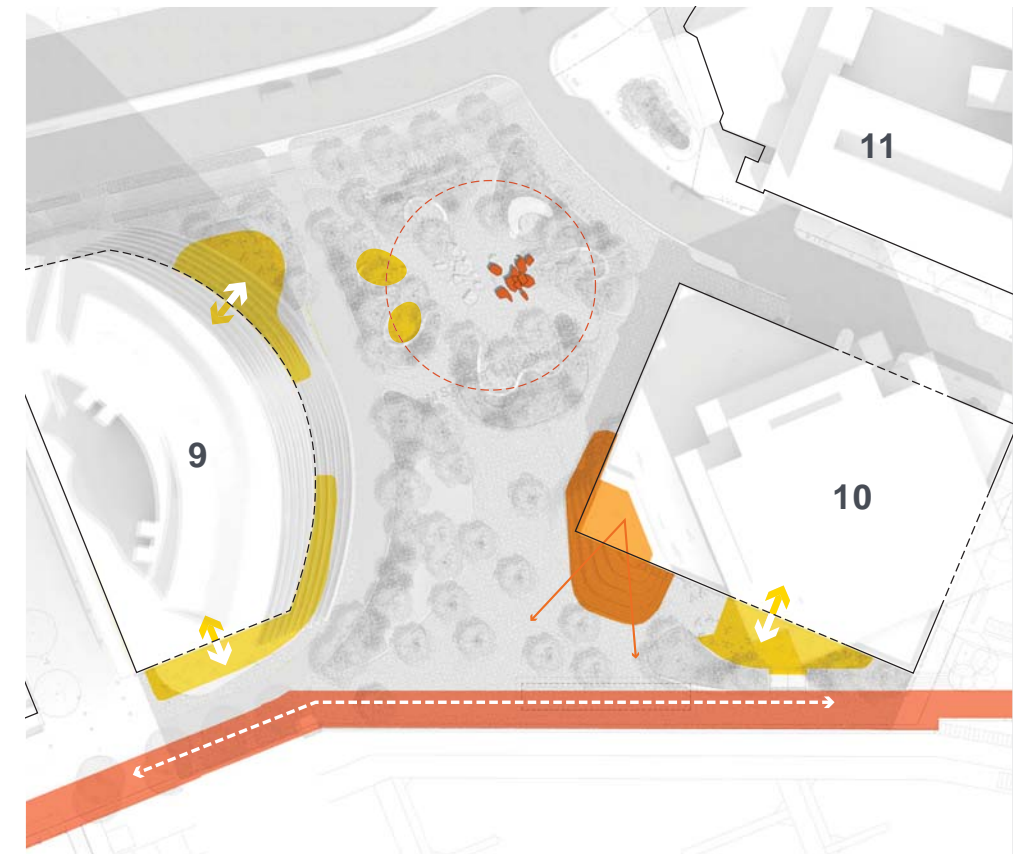
- Pedestrian Pavement
- Vehicular Pavement
- Bike Lane



FURNISHINGS

Site furnishings provide a range of options for different needs and weather. Precast concrete seat benches curve around the inside edge of planters and face toward the center of Fountain Plaza, as well as toward the waterfront and amphitheater. In the café spaces, and also elsewhere in the space moveable chairs and tables give visitors the chance to choose the perfect view and degree of sun or shade. Other important furnishings include bike racks and light poles that are at home with the other materials and details in the space.

- Movable Tables and Chairs
- Light Pole
- Bench
- Bike Rack/Bikeshare



PROGRAM

The site will feature an exciting mix of seasonal and year-round program. The water's edge promenade is a primary program along the south edge of the site. At the center of the space is the Fountain Plaza which will draw visitors in the summertime to splash and hang out. Café nodes near the buildings and also in the park will offer a chance for refreshment and relaxation. An amphitheater will offer a space for larger groups as well as the opportunity for daytime and evening performances.

- Cafe Seating Areas
- Fountain Plaza
- Seat Steps
- Promenade



