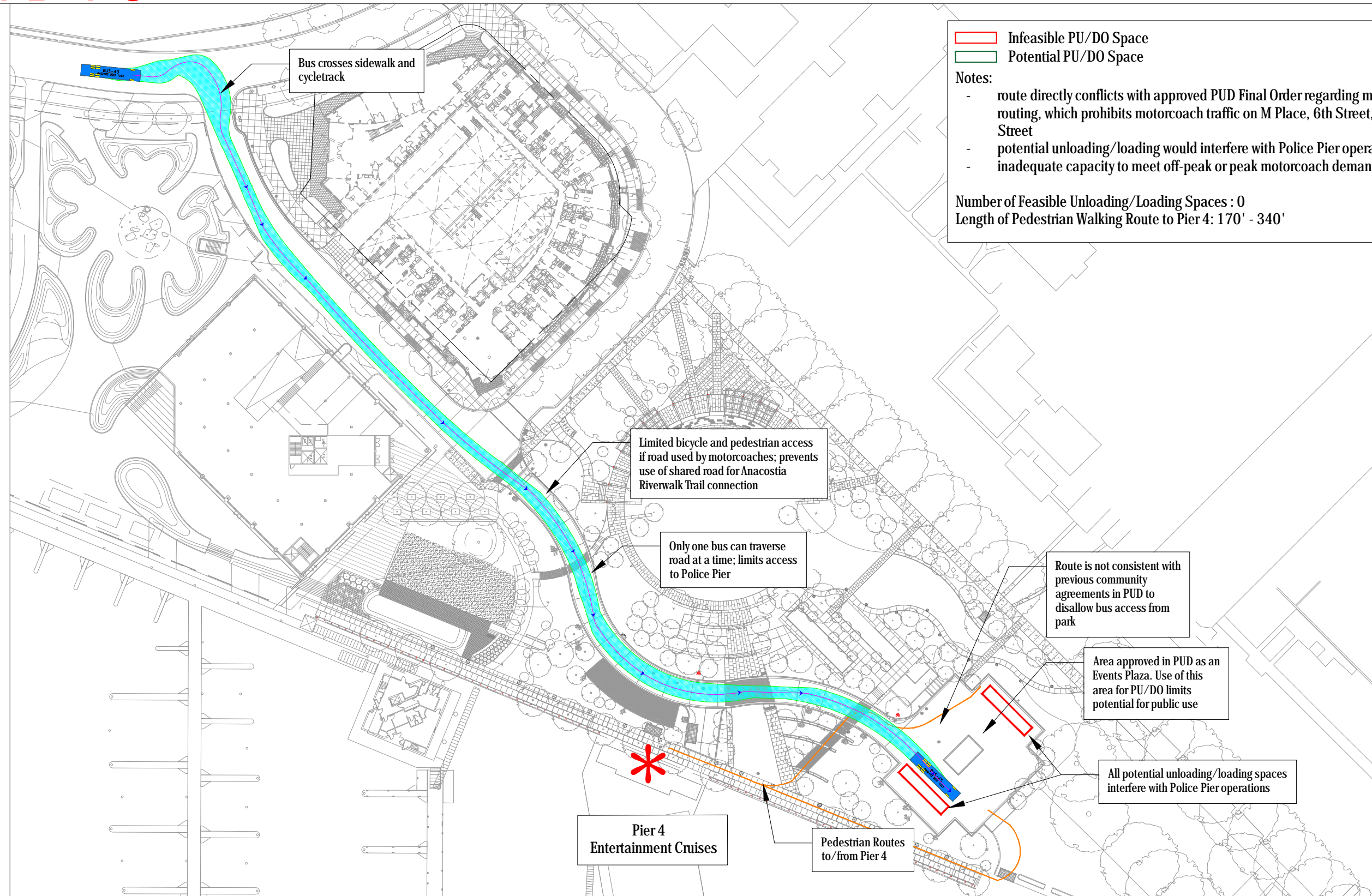
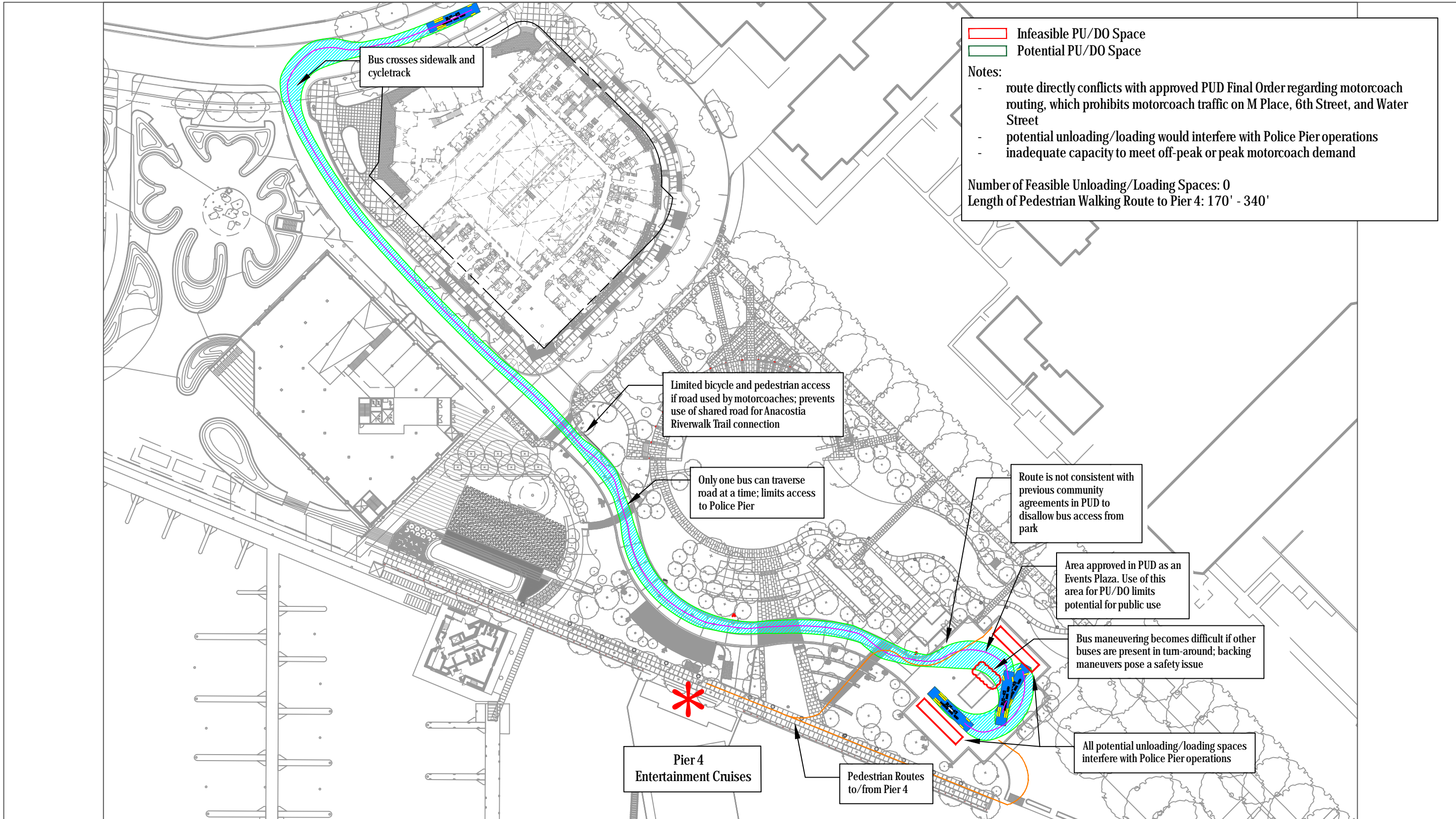
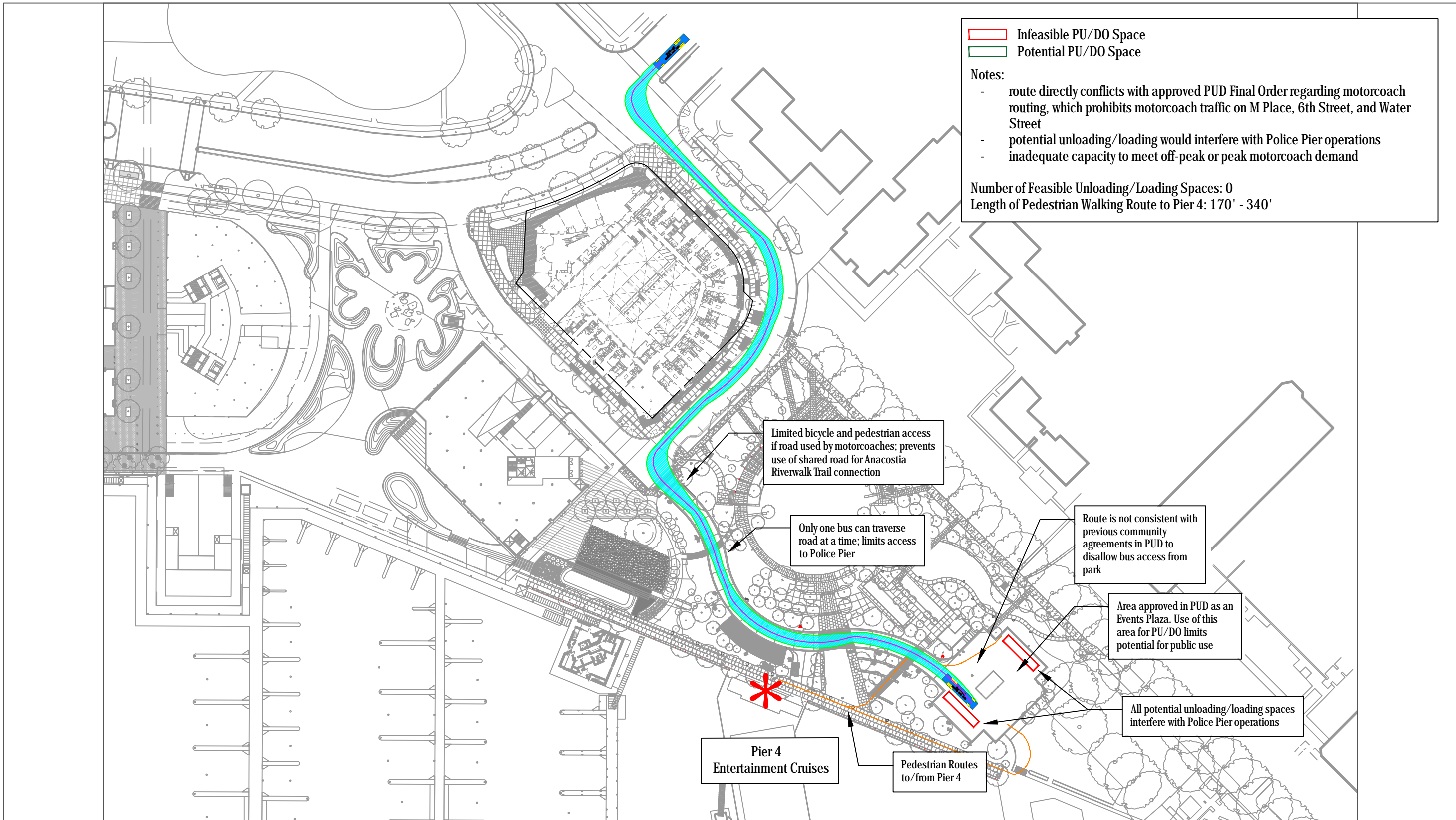


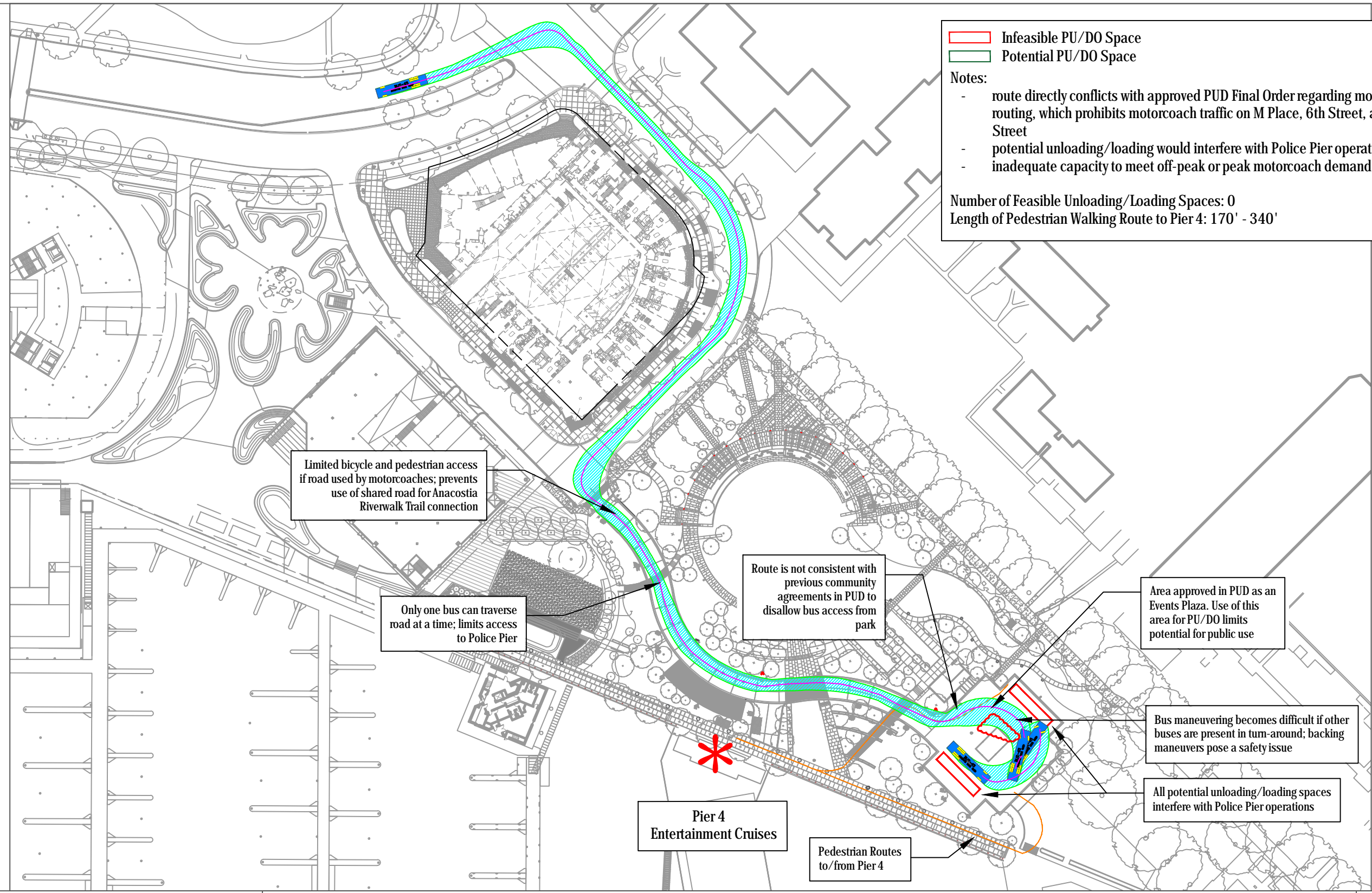
Exhibit J: On-Site Motorcoach Test Routes

EXHIBIT J









▨ Infeasible PU/DO Space
▨ Potential PU/DO Space

Notes:

- route directly conflicts with approved PUD Final Order regarding motorcoach routing, which prohibits motorcoach traffic on M Place, 6th Street, and Water Street
- potential unloading/loading would interfere with Police Pier operations
- inadequate capacity to meet off-peak or peak motorcoach demand

Number of Feasible Unloading/Loading Spaces: 0
 Length of Pedestrian Walking Route to Pier 4: 170' - 340'

Limited bicycle and pedestrian access if road used by motorcoaches; prevents use of shared road for Anacostia Riverwalk Trail connection

Only one bus can traverse road at a time; limits access to Police Pier

Route is not consistent with previous community agreements in PUD to disallow bus access from park

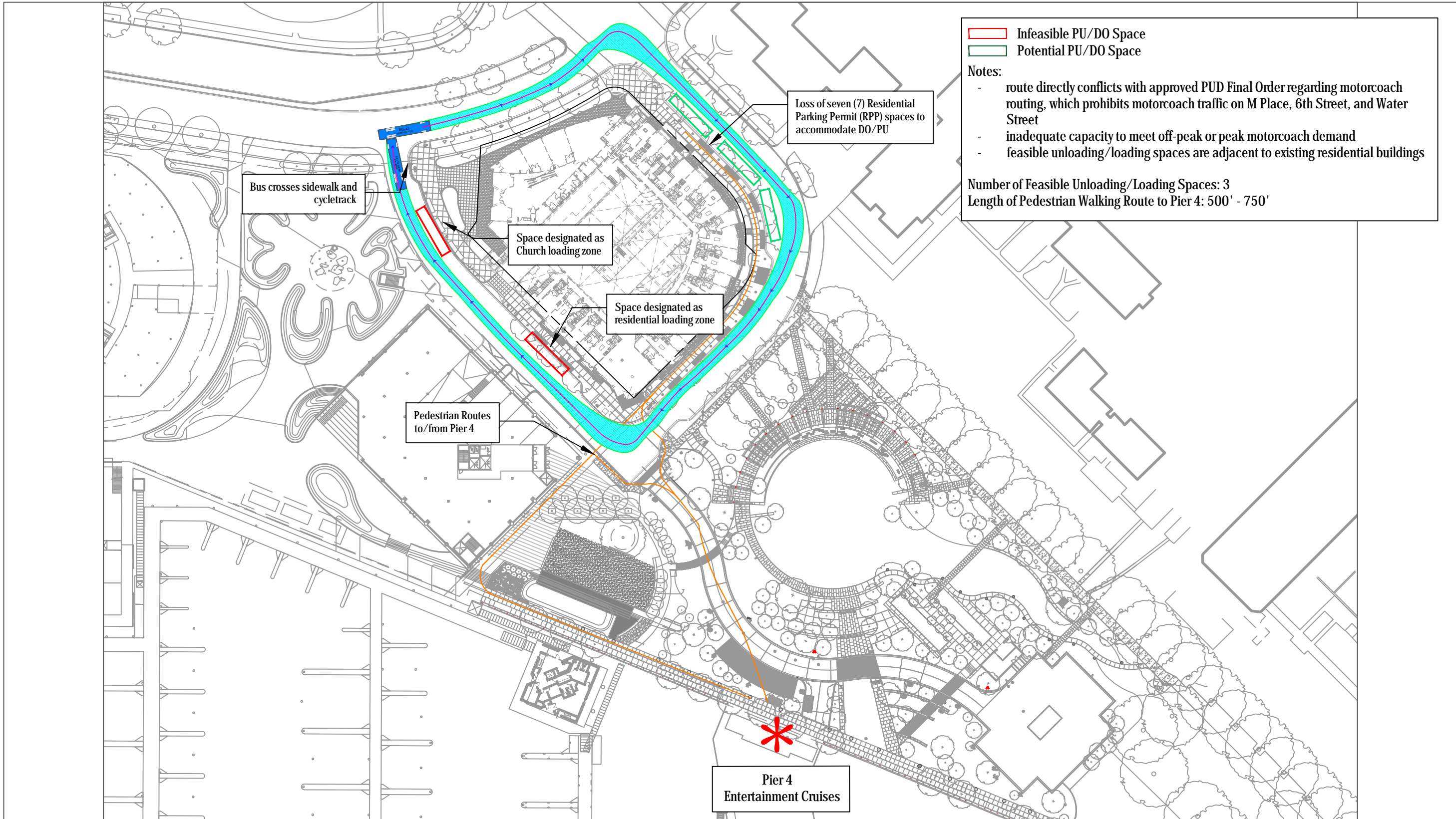
Area approved in PUD as an Events Plaza. Use of this area for PU/DO limits potential for public use

Bus maneuvering becomes difficult if other buses are present in turn-around; backing maneuvers pose a safety issue

All potential unloading/loading spaces interfere with Police Pier operations

Pier 4 Entertainment Cruises

Pedestrian Routes to/from Pier 4



▬ Infeasible PU/DO Space
▬ Potential PU/DO Space

- Notes:
- route directly conflicts with approved PUD Final Order regarding motorcoach routing, which prohibits motorcoach traffic on M Place, 6th Street, and Water Street
 - inadequate capacity to meet off-peak or peak motorcoach demand
 - feasible unloading/loading spaces are adjacent to existing residential buildings

Number of Feasible Unloading/Loading Spaces: 3
 Length of Pedestrian Walking Route to Pier 4: 500' - 750'

