



# SKYLAND TOWN CENTER

ZONING COMMISSION PUBLIC HEARING

July 23, 2020

ZONING COMMISSION  
District of Columbia  
CASE NO.09-03F  
EXHIBIT NO.31A1

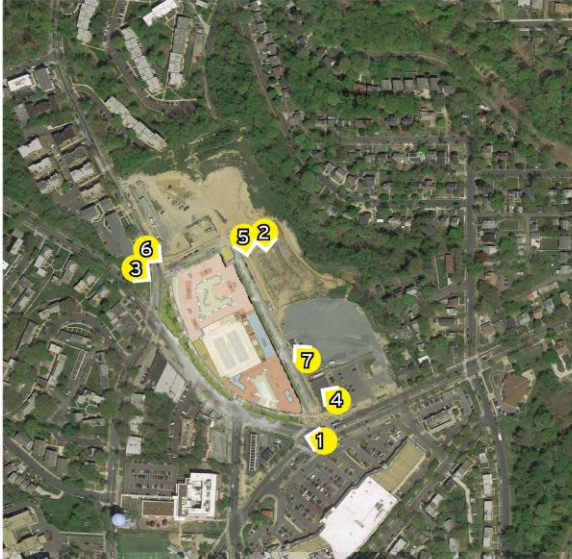


# Surrounding Context





# Block 2 - Construction Photos



BLOCK 2 RENDERING



BLOCK 2 RENDERING





# Proposed Master Plan





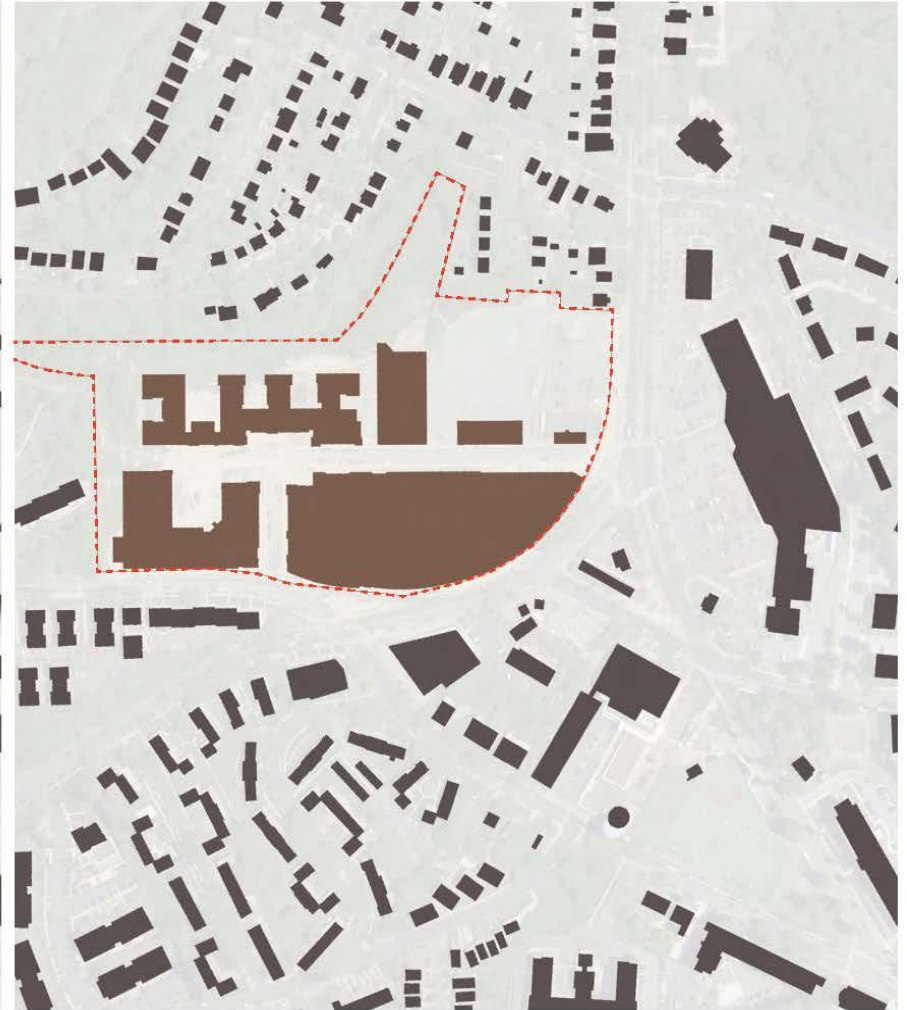
# Aerial View of Town Center



# Town Center Concept



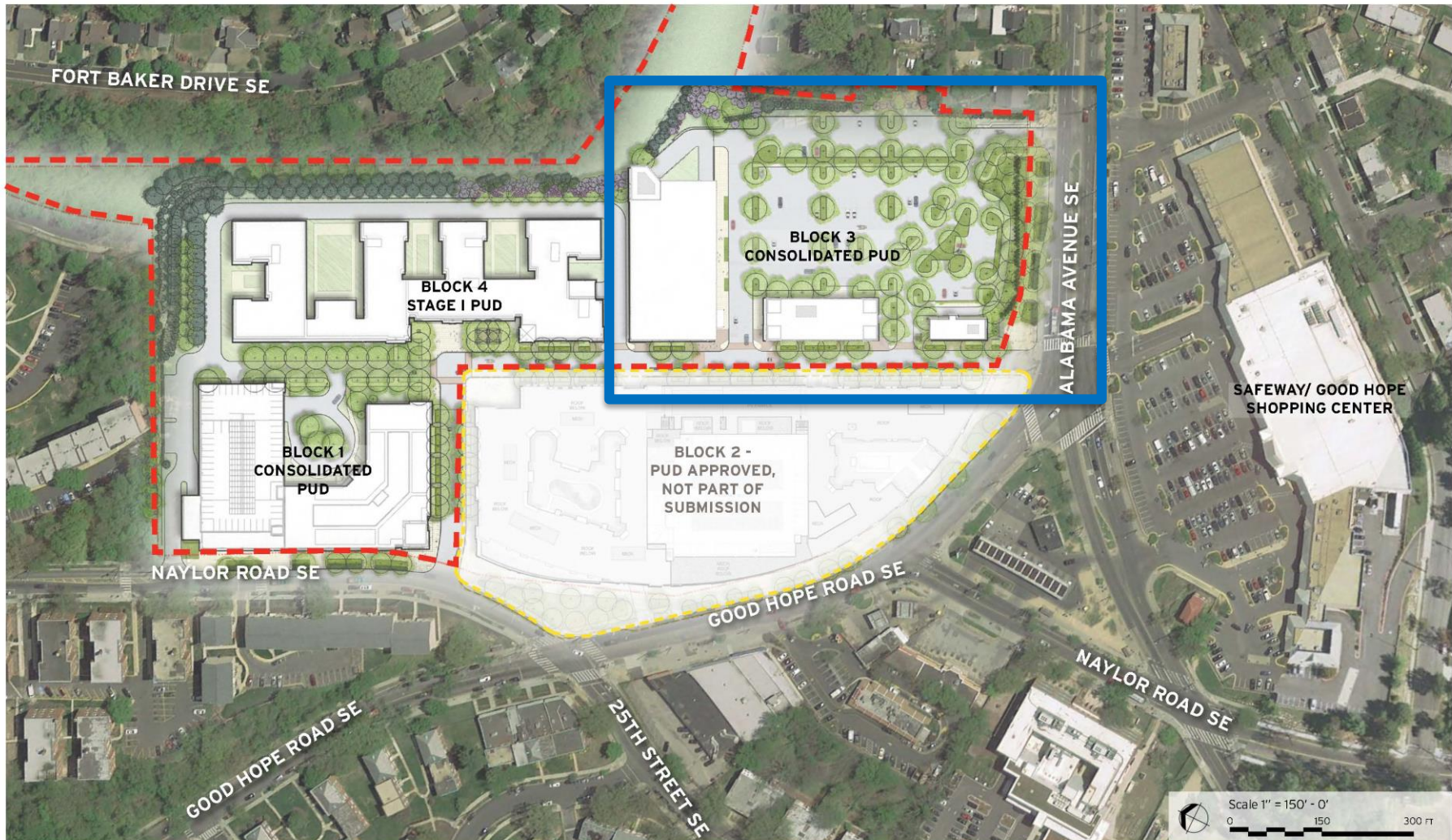
EXISTING SITE IN 2014, BEFORE DEMOLITION AND START OF BLOCK 2 CONSTRUCTION



PROPOSED SKYLAND TOWN CENTER



# Consolidated PUD – Block 3



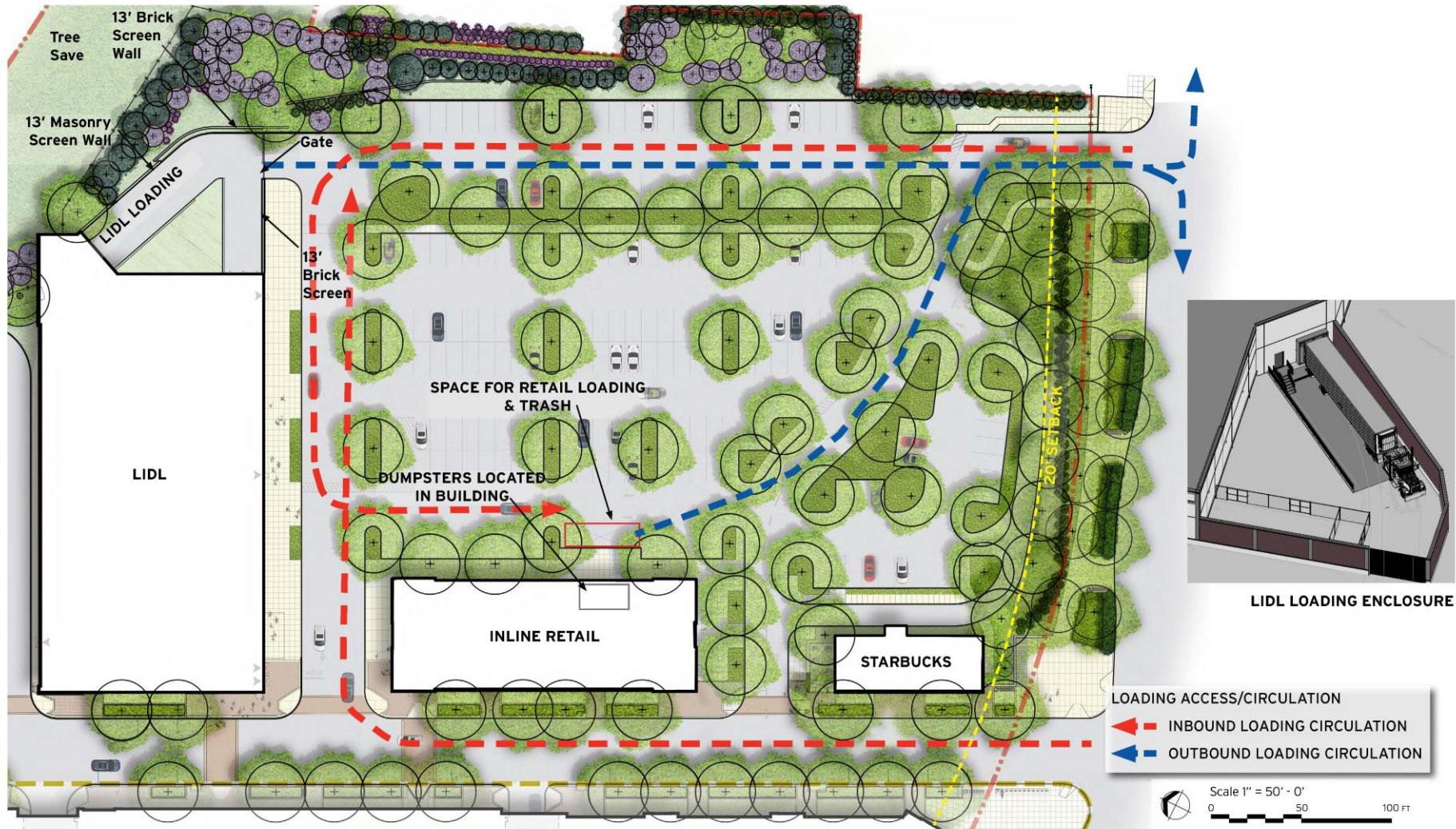


# Block 3 – Site Plan





# Block 3 – Loading Diagram





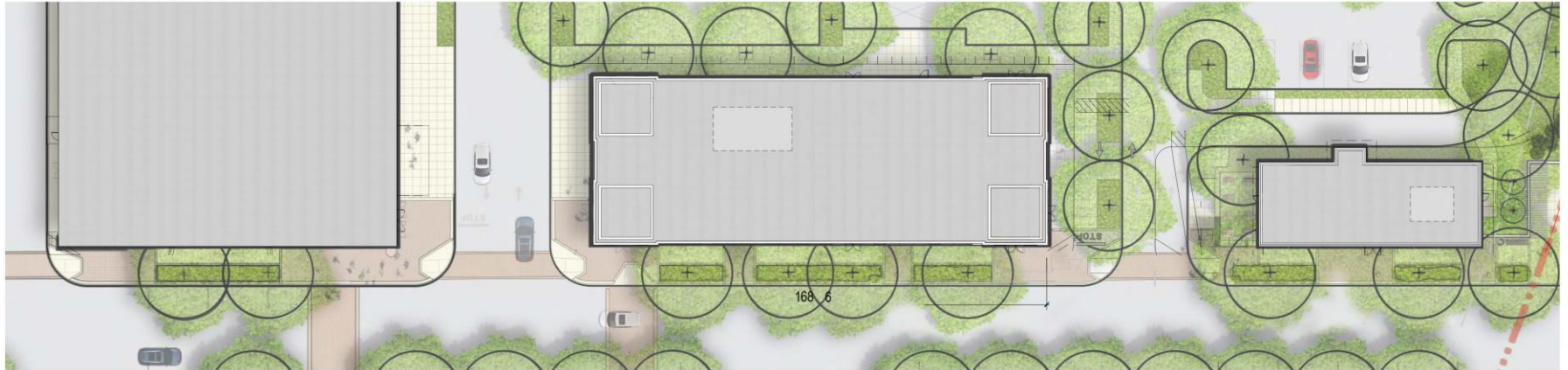
# Block 3 – View from Akron Place



Note: Trees shown 3-4 years from date of planting at 12' tall. Trees are 8' minimum at installation.



# Block 3 – Town Center Drive





# Block 3 – In-Line Retail Precedents

BLOCK 2





# Block 3 – Town Center Drive





# Block 3 – Town Center Drive





# Block 3 – Town Center Drive





# Block 3 – Alabama Avenue



July 2, 2020 ©2020 Terri Gallas Urban 650 F St, NW, Suite 690 Washington, DC 20004 202.232.3132



Skyland Town Center Entrance  
SKYLAND TOWN CENTER

A120



# Block 3 – Alabama Avenue



Note: Trees shown 12-15 years from date of planting at 30'-35' tall. Trees are 14' minimum at installation.



# Block 3 – Alabama Avenue





# Block 3 – Alabama Avenue



Note: Trees shown 12-15 years from date of planting at 30'-35' tall. Trees are 14' minimum at installation.



# Block 3 – Alabama Avenue



Note: Trees shown 12-15 years from date of planting at 30'-35' tall. Trees are 14' minimum at installation.



# Block 3 – Alabama Avenue



Note: Trees shown 12-15 years from date of planting at 30'-35' tall. Trees are 14' minimum at installation.



# First Stage PUD – Block 4

