


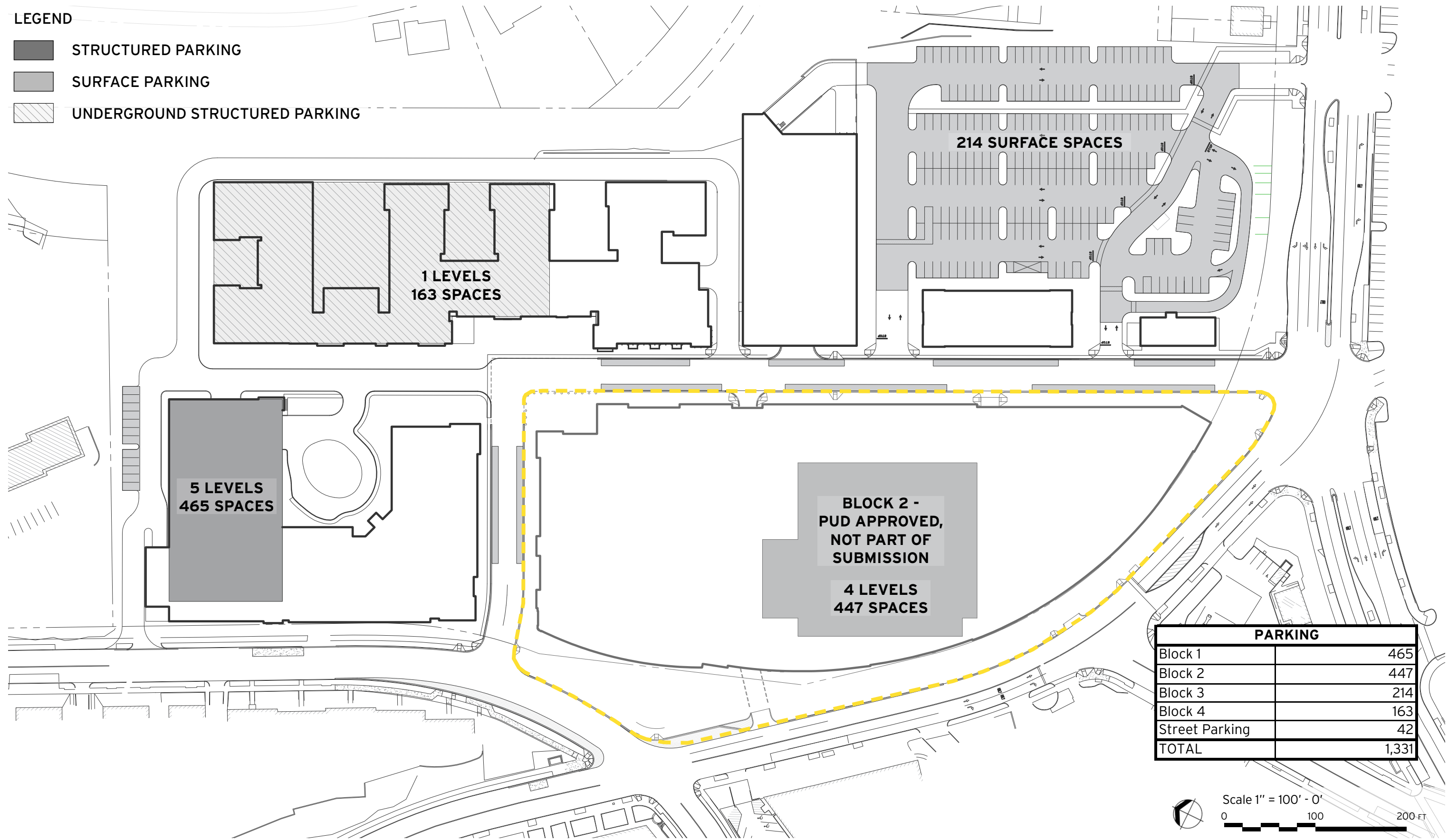
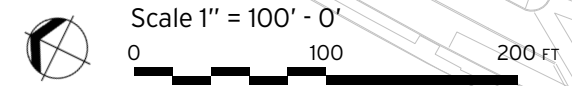


LEGEND

-  STRUCTURED PARKING
-  SURFACE PARKING
-  UNDERGROUND STRUCTURED PARKING



PARKING	
Block 1	465
Block 2	447
Block 3	214
Block 4	163
Street Parking	42
TOTAL	1,331





EXISTING SITE IN 2014, BEFORE DEMOLITION AND START OF BLOCK 2 CONSTRUCTION



PROPOSED SKYLAND TOWN CENTER

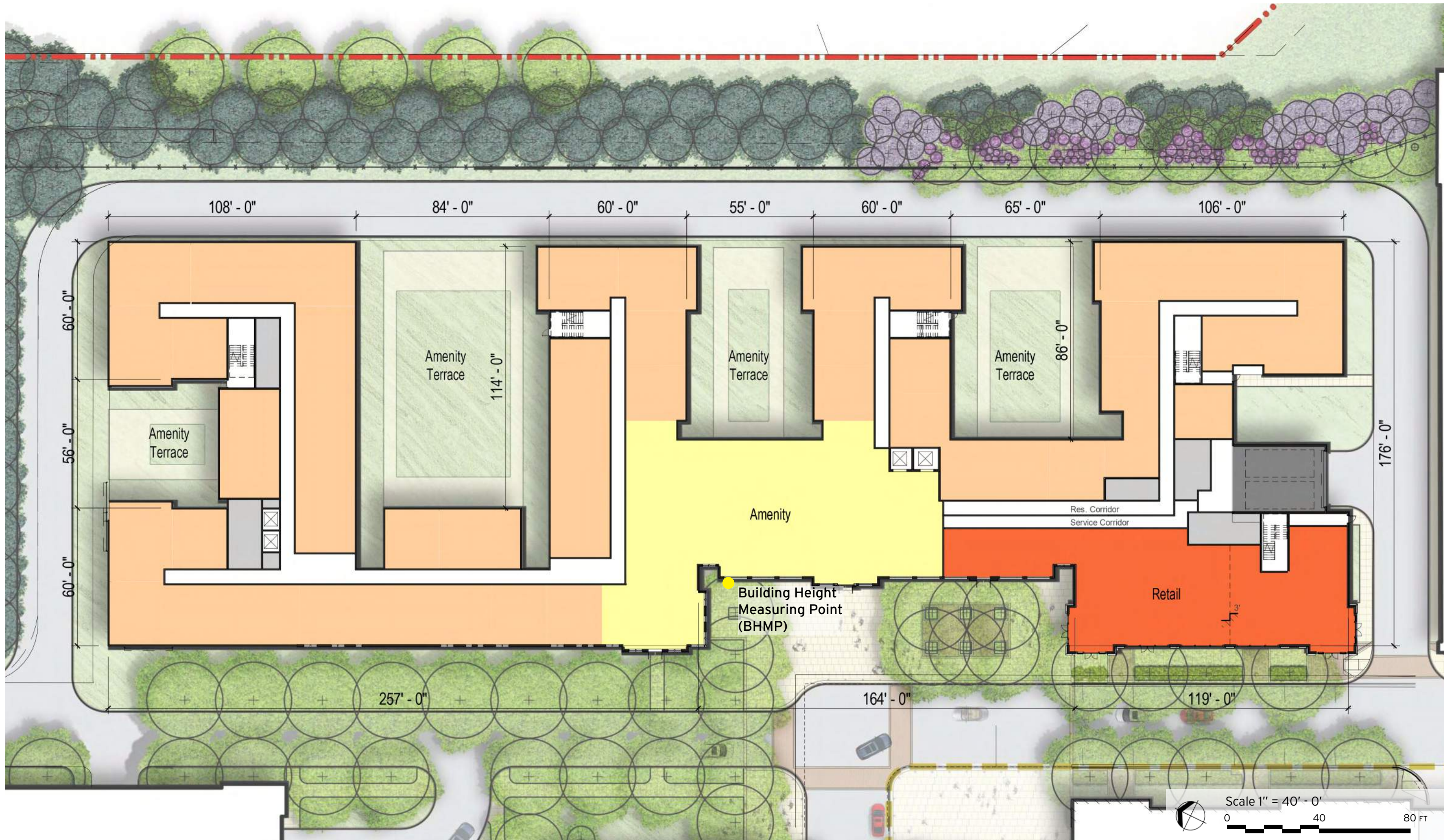


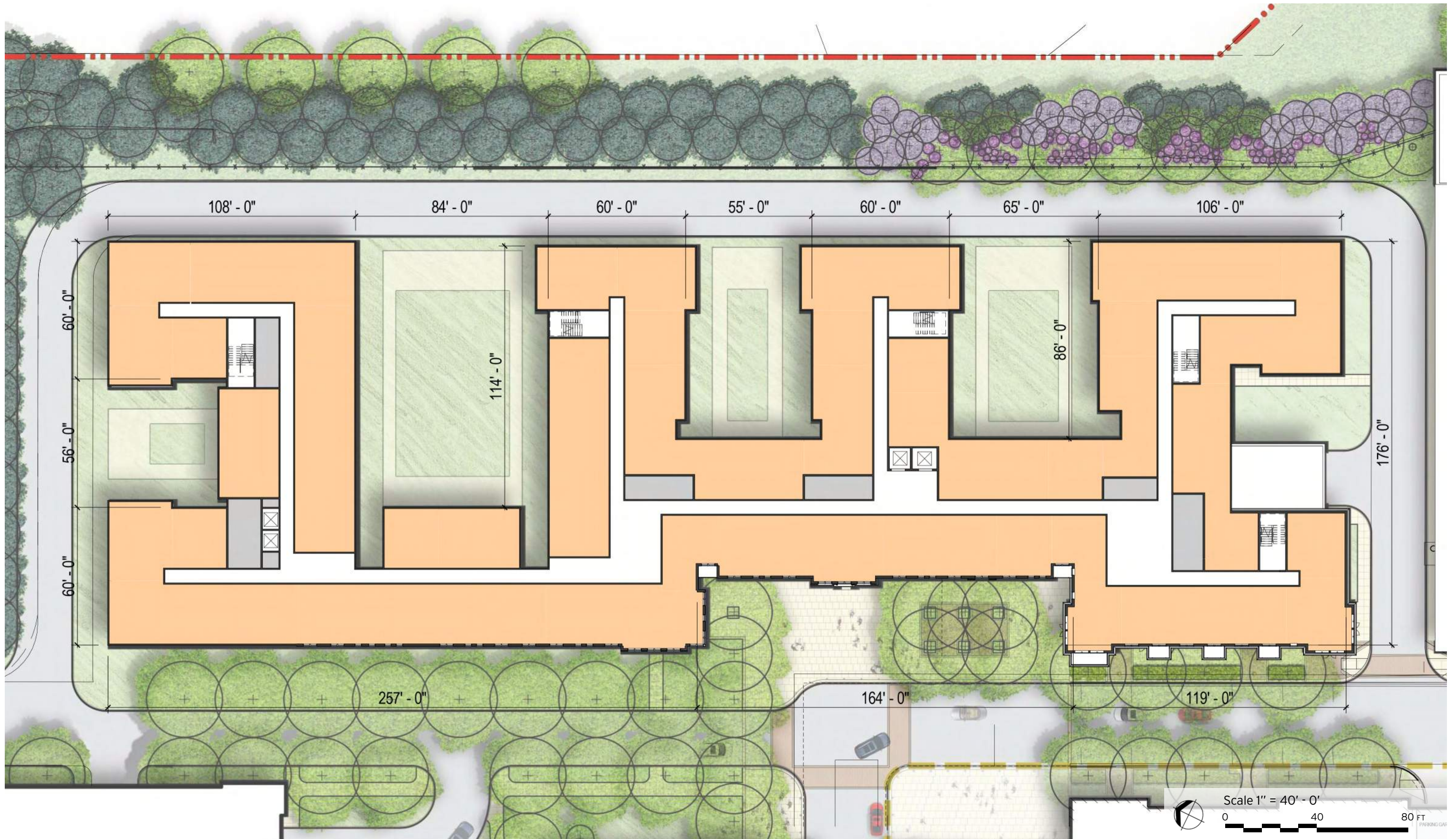


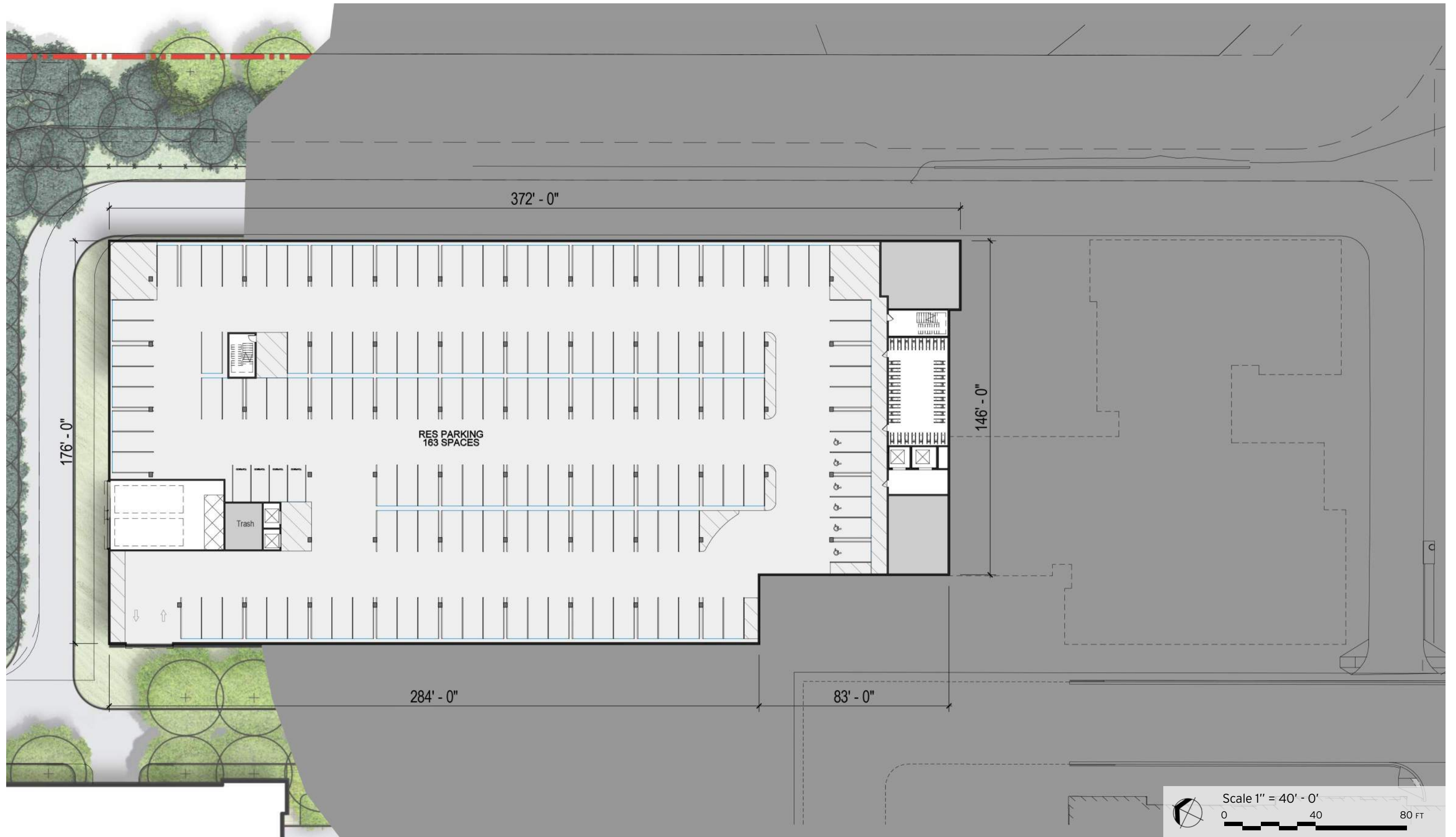


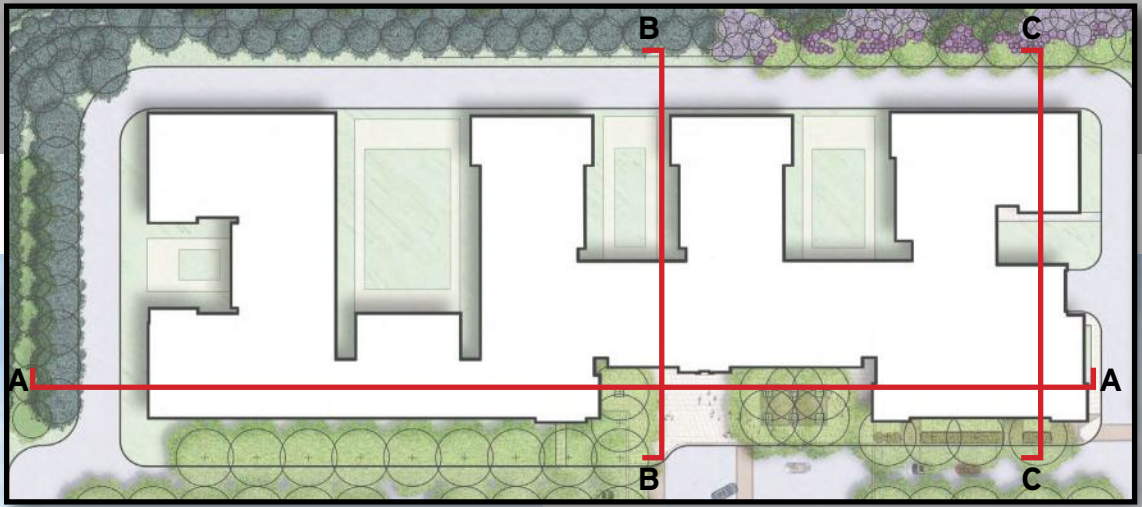
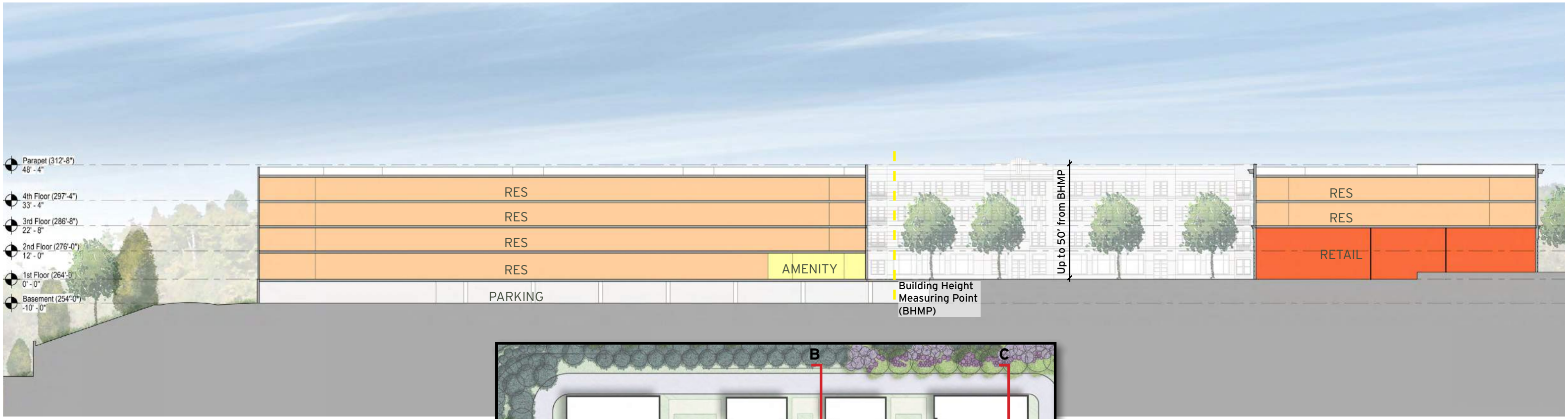
Stage 1 Architecture Exhibits



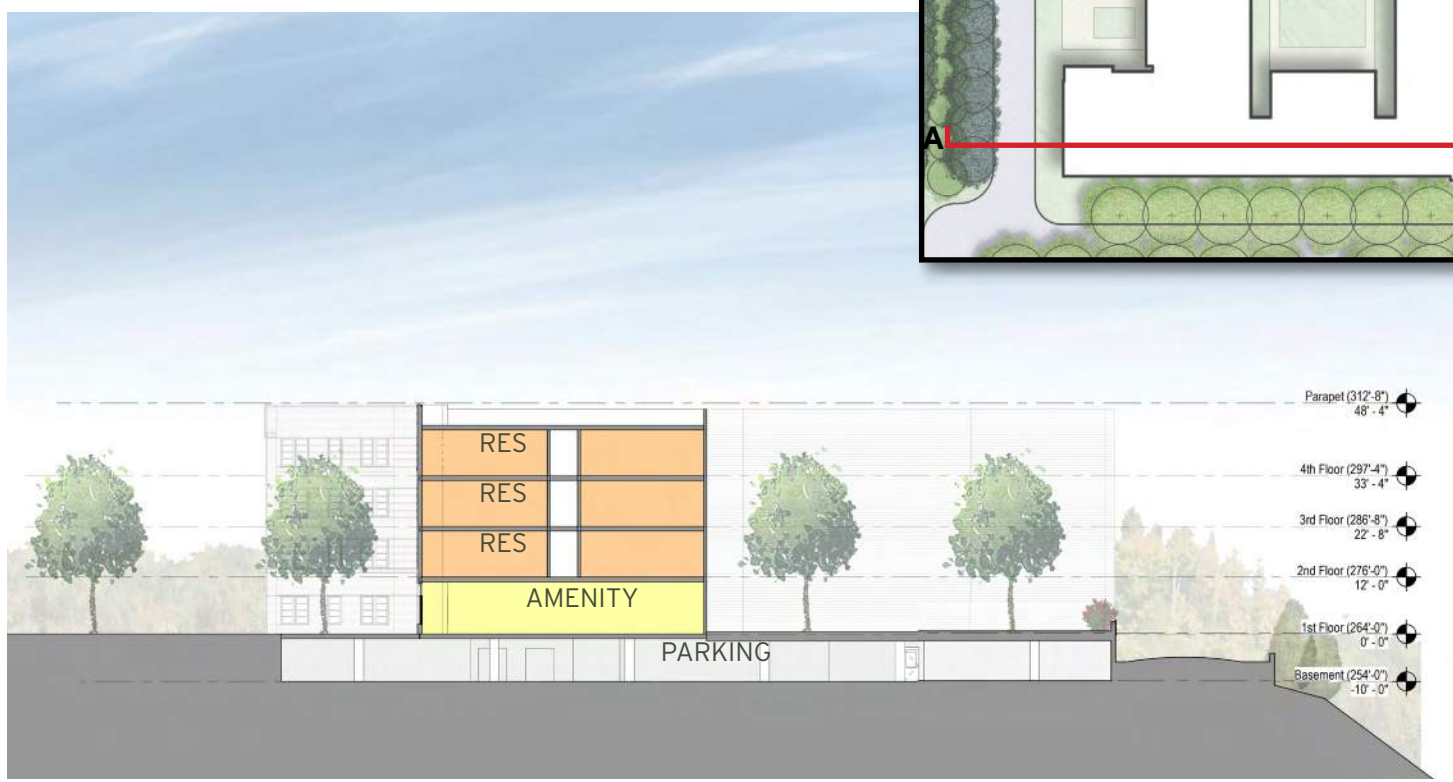








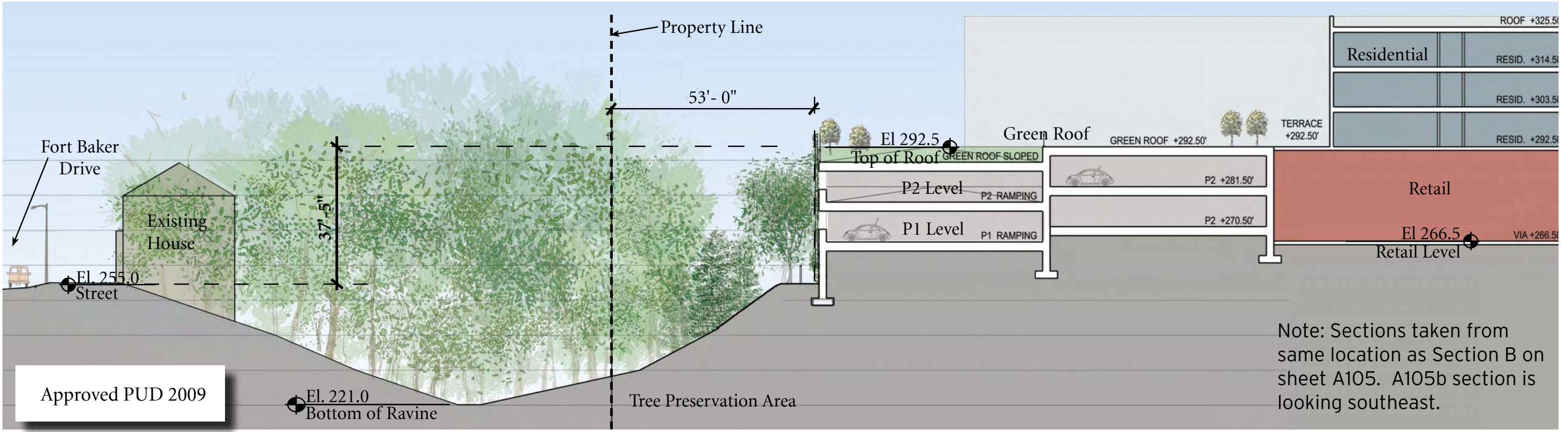
A. N-S SECTION

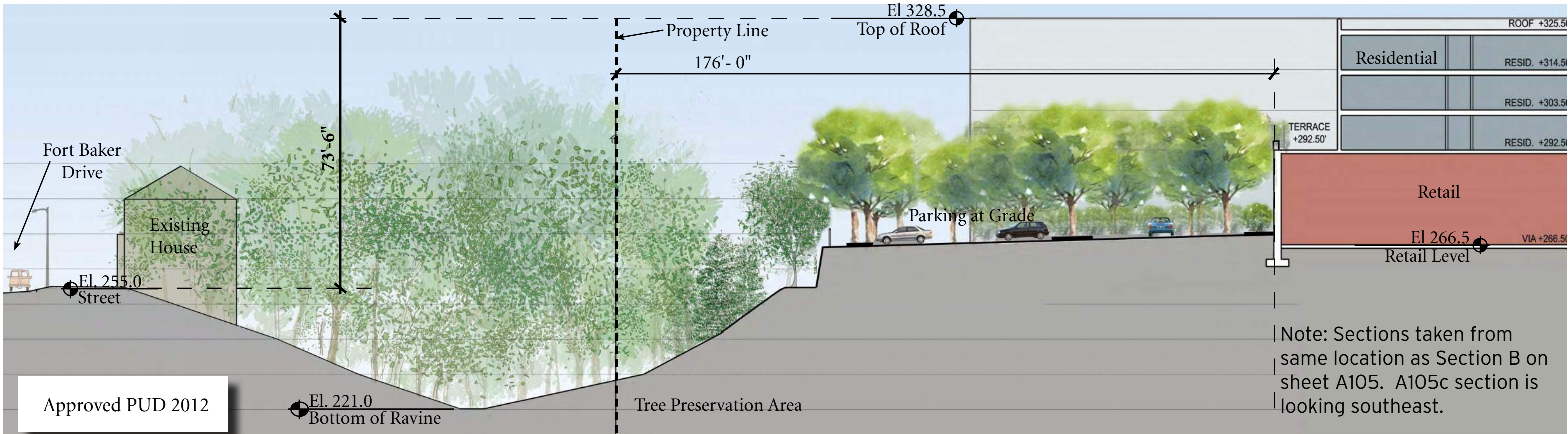


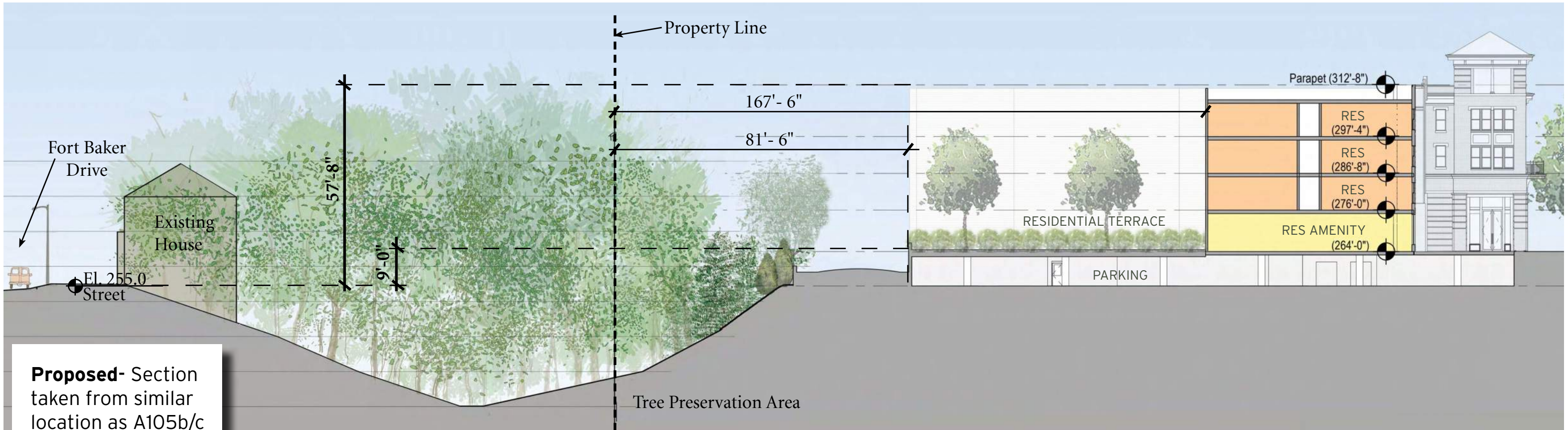
B. E-W SECTION



C. E-W SECTION







Proposed- Section taken from similar location as A105b/c sections



COMPARISON TO 2012 APPROVAL

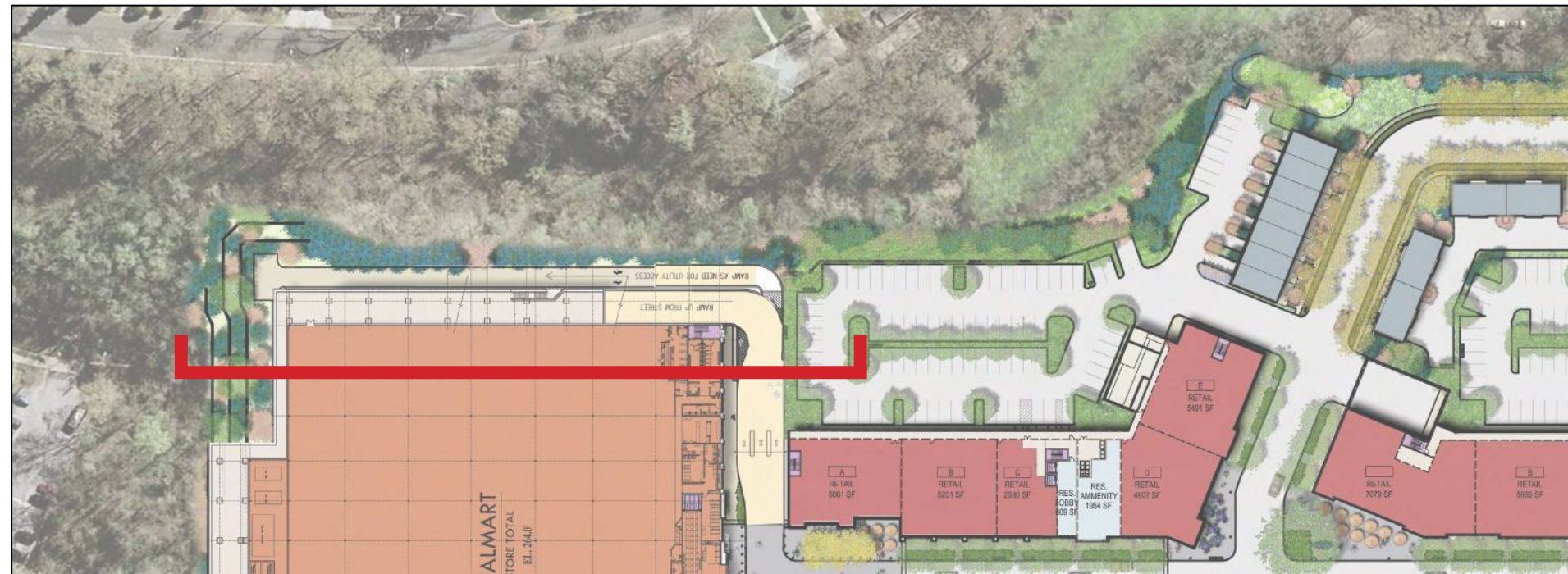
- Building Height Reduced by 15'-2"
- Building closer to Property Line by 94'-6" (8'-6" at residential terraces)
- No exposed surface parking
- No loading adjacent to property line

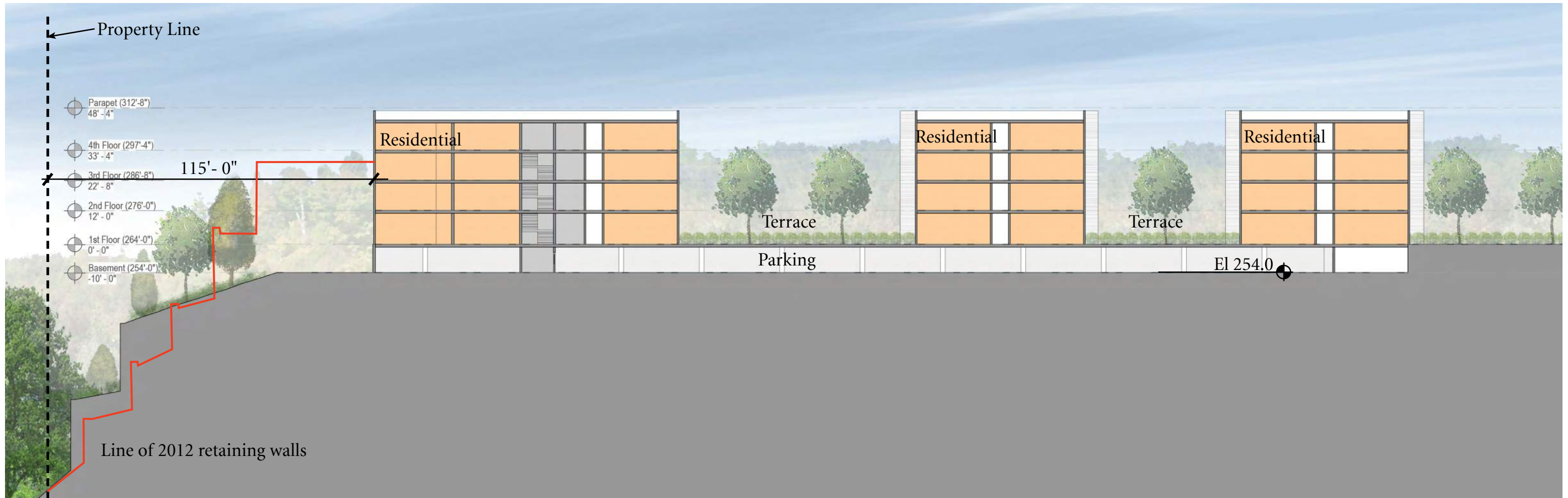
COMPARISON TO 2009 APPROVAL

- Building Height Reduced by 15'-2"
- Building farther from Property Line by 28'-6"
- No exposed parking garage
- No loading adjacent to property line



Approved PUD 2012





COMPARISON TO 2012 APPROVAL

- Building farther from Property Line by 43'-0"
- Reduce number of retaining walls from 3 to 2
- Scheme works with the grade to have the access drive and half buried garage at +254'

Consolidated Architecture Exhibits

BLOCK 2



July 2, 2020

©2020 Torti Gallas Urban | 650 F St NW, Suite 690 | Washington, DC 20004 | 202.232.3132



Block 3 - Precedent
SKYLAND TOWN CENTER



NOTE: ROOFTOP MECHANICAL UNIT HEIGHTS ARE LESS THAN 4' ABOVE PARAPET

