

Proposed- Section taken from similar location as A105b/c sections



COMPARISON TO 2012 APPROVAL

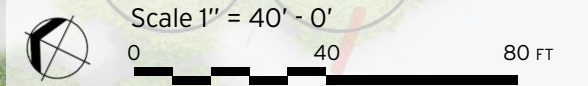
- Building Height Reduced by 15'-2"
- Building closer to Property Line by 94'-6" (8'-6" at residential terraces)
- No exposed surface parking
- No loading adjacent to property line

COMPARISON TO 2009 APPROVAL

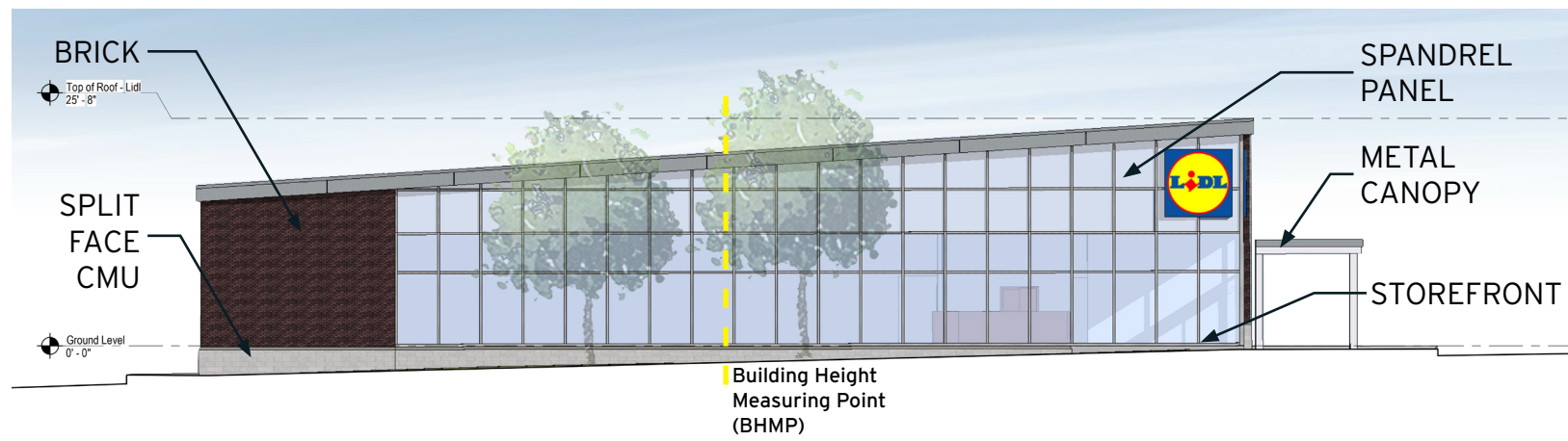
- Building Height Reduced by 15'-2"
- Building farther from Property Line by 28'-6"
- No exposed parking garage
- No loading adjacent to property line



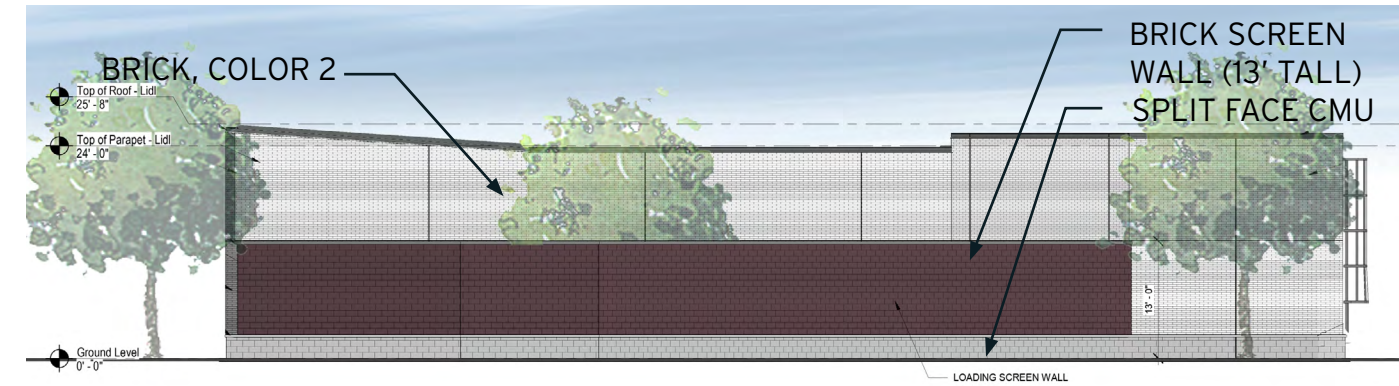
NOTE: ROOFTOP MECHANICAL UNIT HEIGHTS ARE LESS THAN 4' ABOVE PARAPET



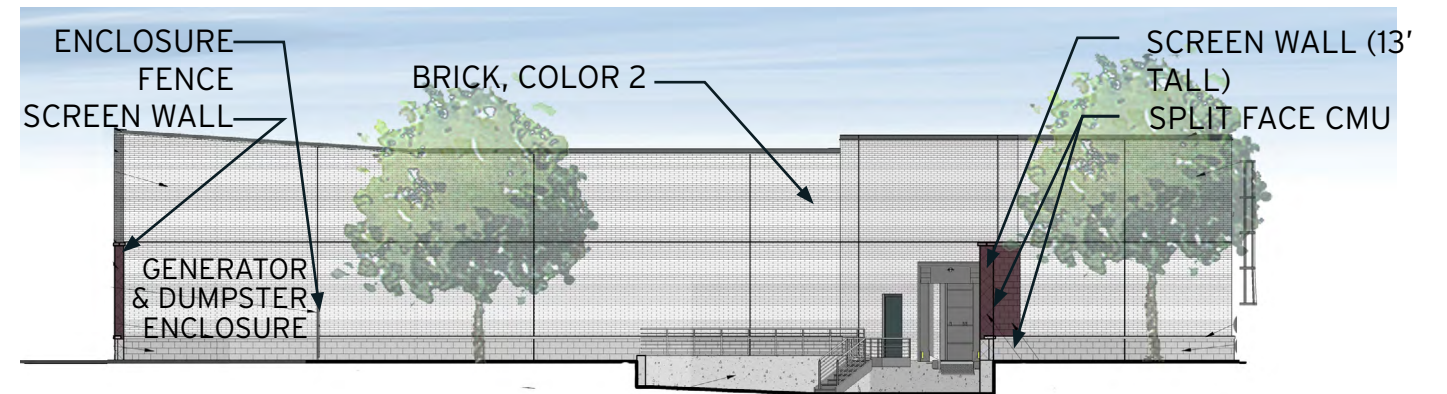




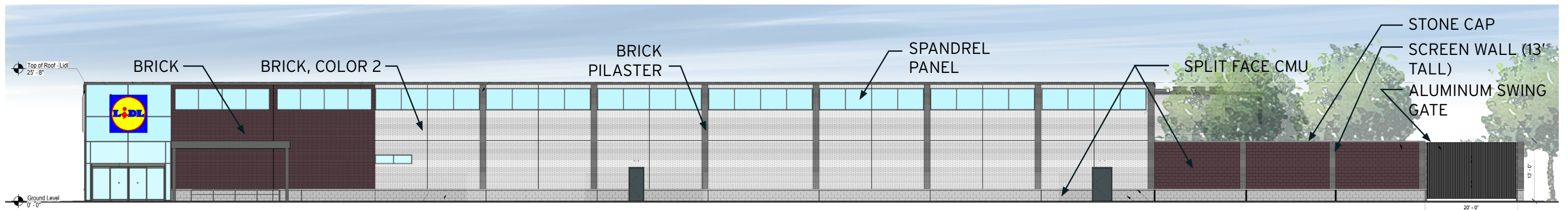
TOWN CENTER DR. ELEVATION



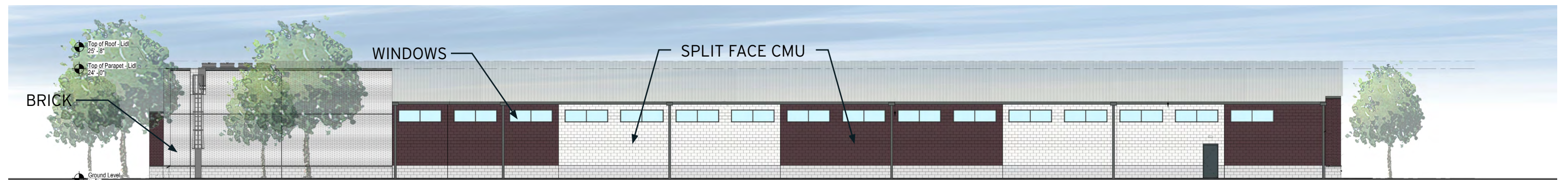
WEST ELEVATION



WEST ELEVATION - INSIDE SCREENING WALLS



PARKING ELEVATION



NORTH ELEVATION