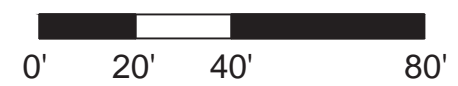
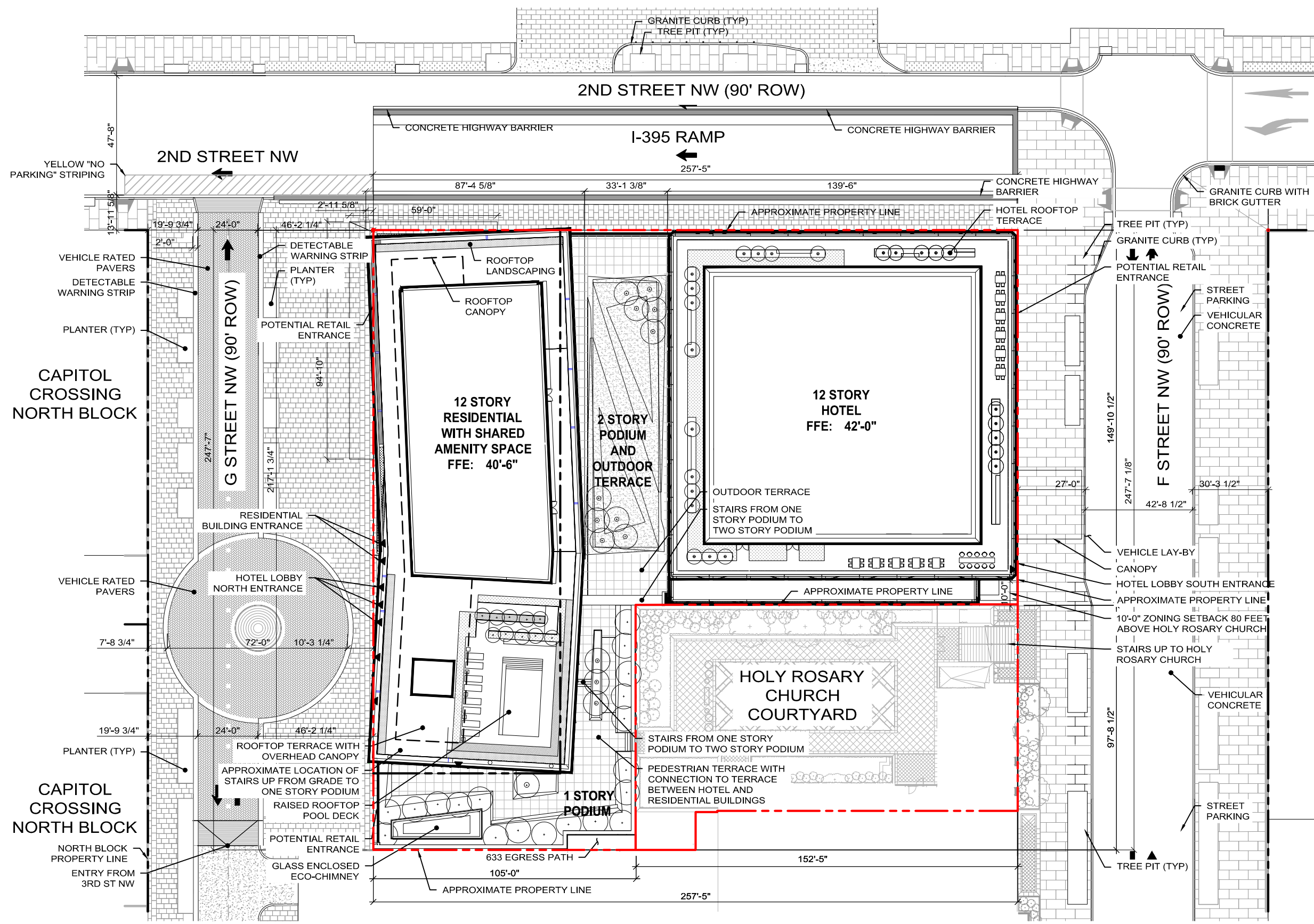


- NOTE:**
- EXISTING CONDITIONS SHOWN ON THESE SHEETS OBTAINED FROM REFERENCE DRAWINGS PROVIDED BY ENNEAD ARCHITECTS. LINEWORK HAS NOT BEEN FIELD VERIFIED.
 - SITE UTILITIES HAVE BEEN REFERENCED FROM A SITE UTILITY PLAN PROVIDED BY ENNEAD ARCHITECTS AND HAVE NOT BEEN SURVEYED.
 - EXISTING SPOT ELEVATIONS OBTAINED FROM A 3D LASER SCAN PRODUCED BY LANGAN IN JULY 2020, WITH REFERENCE TO EXISTING SITE GRADES AND BENCHMARKS.



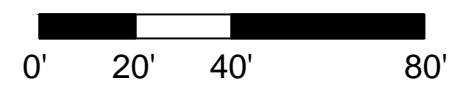
Existing Site And Utility Plan

PUD Stage II Filing: Capitol Crossing III LLC and Capitol Crossing IV LLC: Square 566, Lots 861-862 (part of Record Lot 50)



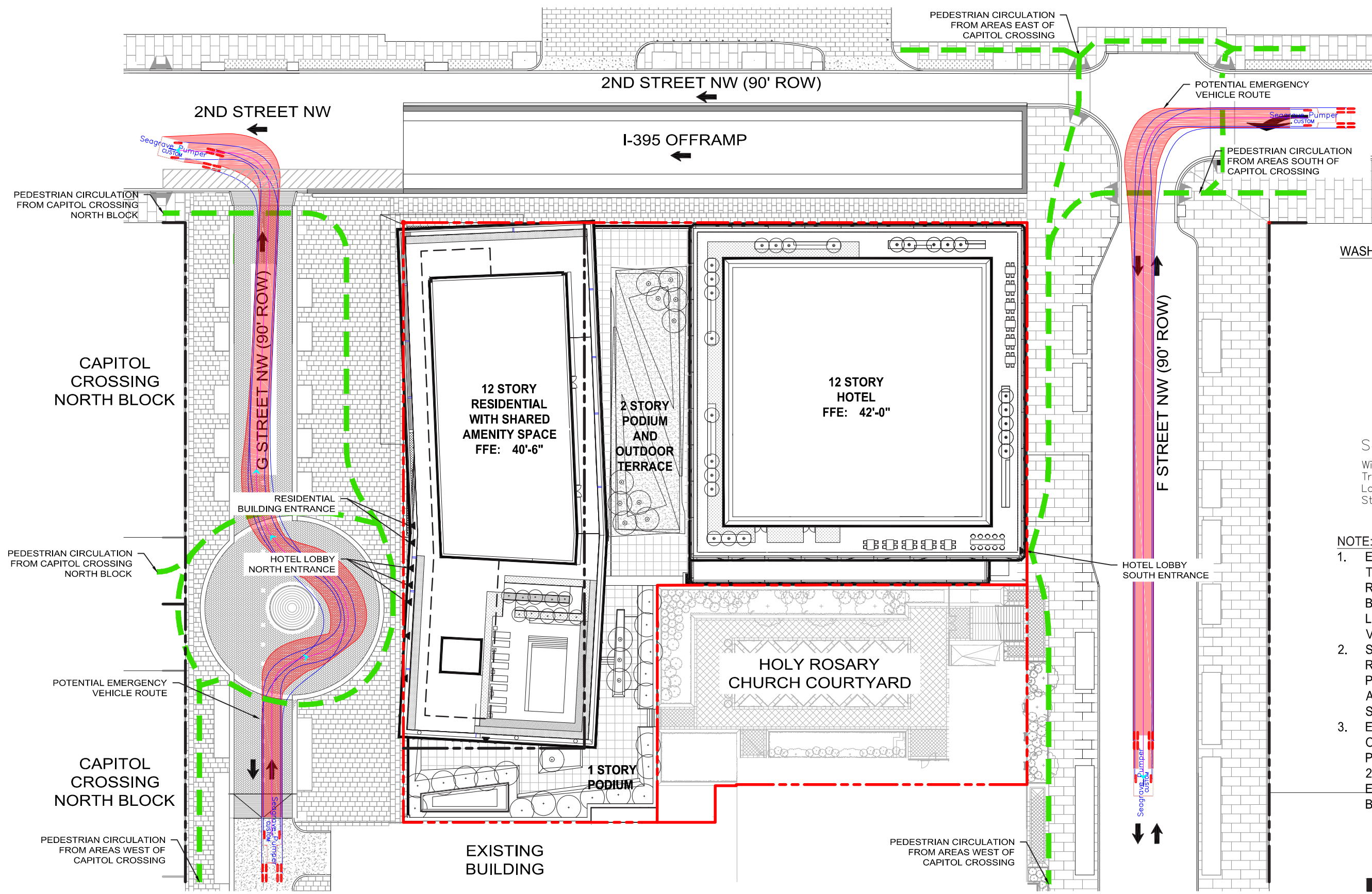
NOTE: THE DESIGN AND LAYOUT OF THE ROOFTOP AND OUTDOOR AMENITY AREAS ARE PRELIMINARY AND ARE SHOWN FOR ILLUSTRATIVE PURPOSES ONLY. FINAL LAYOUTS AND DESIGN, INCLUDING THE AMENITIES PROVIDED AS WELL AS THE LOCATION AND SIZE OF THE ROOFTOP POOL MAY VARY

- NOTE:
1. EXISTING CONDITIONS SHOWN ON THESE SHEETS OBTAINED FROM REFERENCE DRAWINGS PROVIDED BY ENNEAD ARCHITECTS. LINEWORK HAS NOT BEEN FIELD VERIFIED.
 2. SITE UTILITIES HAVE BEEN REFERENCED FROM A SITE UTILITY PLAN PROVIDED BY ENNEAD ARCHITECTS AND HAVE NOT BEEN SURVEYED.
 3. EXISTING SPOT ELEVATIONS OBTAINED FROM A 3D LASER SCAN PRODUCED BY LANGAN IN JULY 2020, WITH REFERENCE TO EXISTING SITE GRADES AND BENCHMARKS.

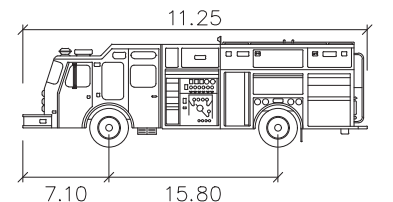


Civil Site Layout Plan

PUD Stage II Filing: Capitol Crossing III LLC and Capitol Crossing IV LLC: Square 566, Lots 861-862 (part of Record Lot 50)



WASHINGTON DC EMERGENCY VEHICLE
(FOR REFERENCE ONLY)
NOTE: NTS



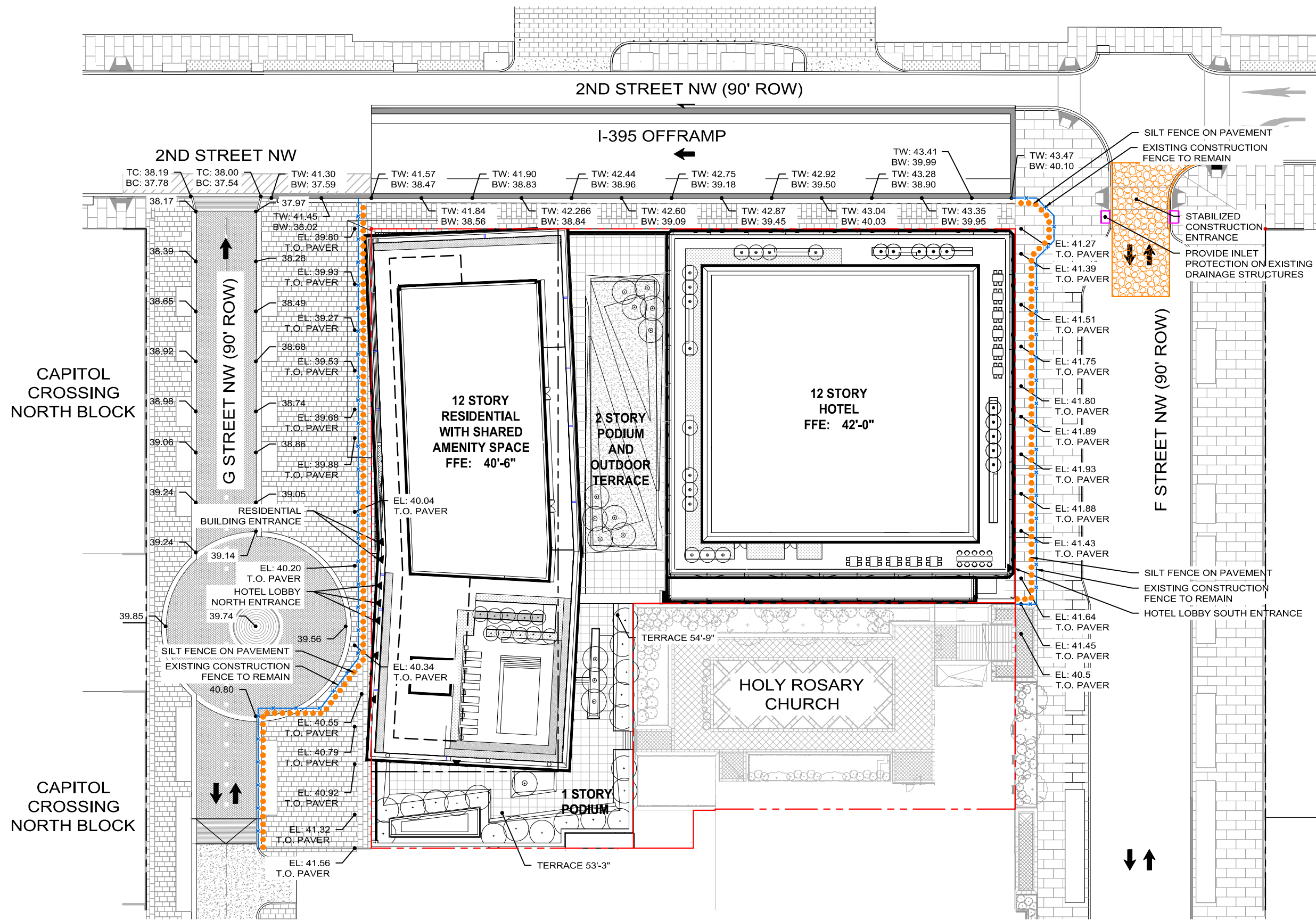
Seagrave Pumper		feet
Width	:	8.00
Track	:	8.50
Lock to Lock Time	:	6.0
Steering Angle	:	40.0

- NOTE:
- EXISTING CONDITIONS SHOWN ON THESE SHEETS OBTAINED FROM REFERENCE DRAWINGS PROVIDED BY ENNEAD ARCHITECTS. LINEWORK HAS NOT BEEN FIELD VERIFIED.
 - SITE UTILITIES HAVE BEEN REFERENCED FROM A SITE UTILITY PLAN PROVIDED BY ENNEAD ARCHITECTS AND HAVE NOT BEEN SURVEYED.
 - EXISTING SPOT ELEVATIONS OBTAINED FROM A 3D LASER SCAN PRODUCED BY LANGAN IN JULY 2020, WITH REFERENCE TO EXISTING SITE GRADES AND BENCHMARKS.



Site Circulation Plan

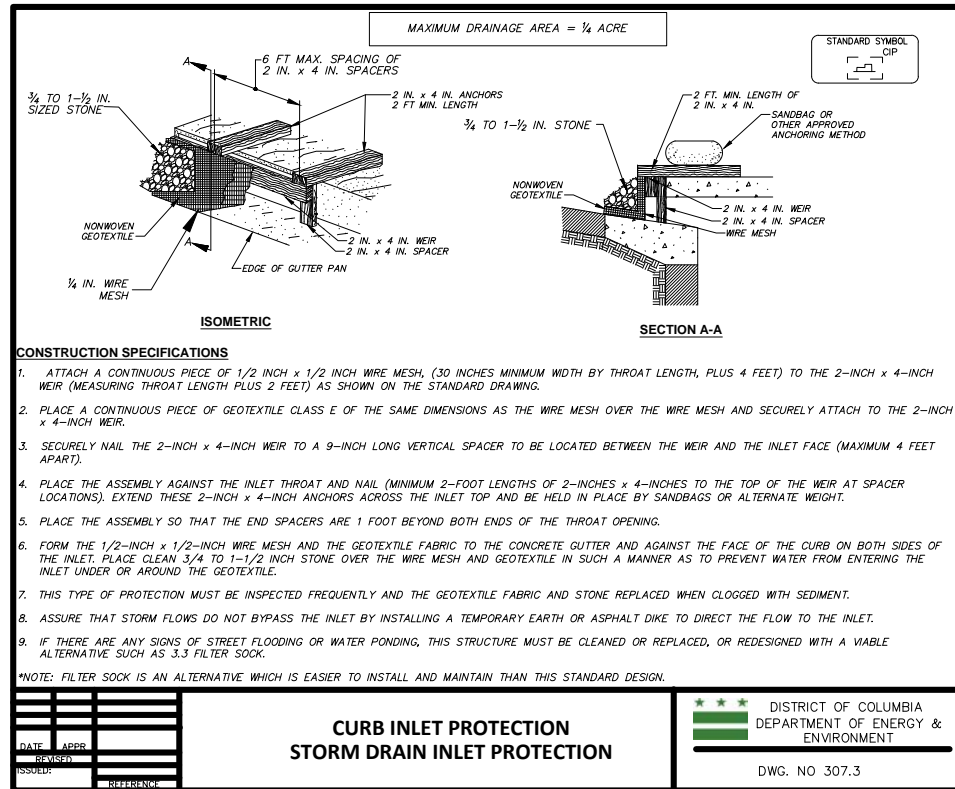
PUD Stage II Filing: Capitol Crossing III LLC and Capitol Crossing IV LLC: Square 566, Lots 861-862 (part of Record Lot 50)



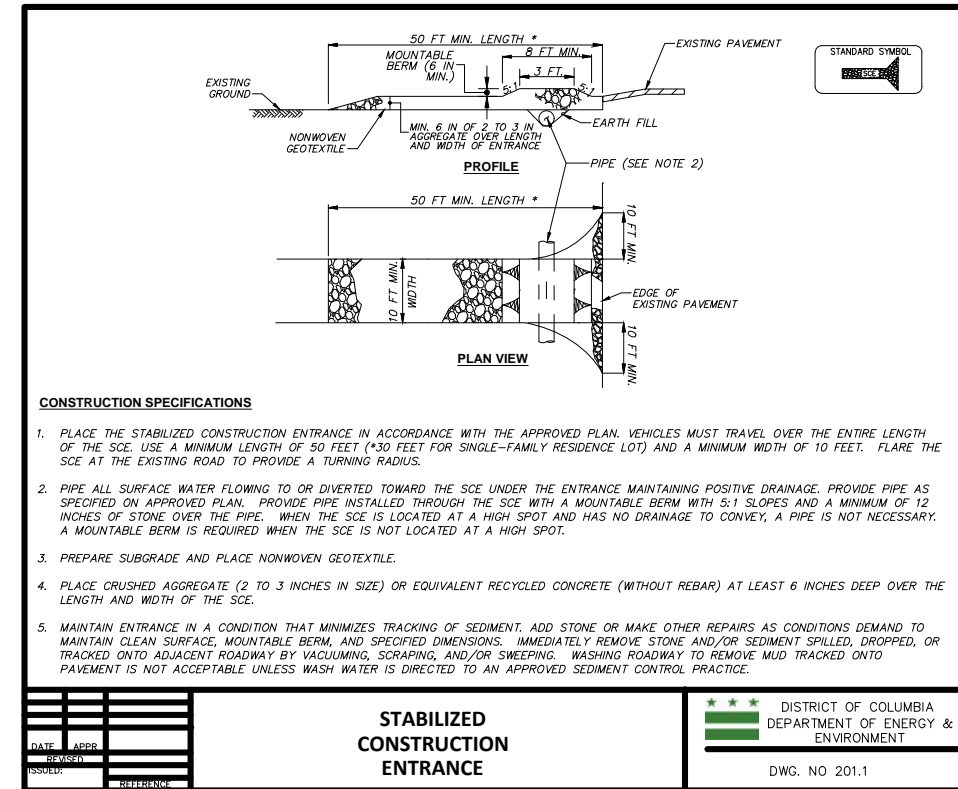
- NOTE:**
1. EXISTING CONDITIONS SHOWN ON THESE SHEETS OBTAINED FROM REFERENCE DRAWINGS PROVIDED BY ENNEAD ARCHITECTS. LINEWORK HAS NOT BEEN FIELD VERIFIED.
 2. SITE UTILITIES HAVE BEEN REFERENCED FROM A SITE UTILITY PLAN PROVIDED BY ENNEAD ARCHITECTS AND HAVE NOT BEEN SURVEYED.
 3. EXISTING SPOT ELEVATIONS OBTAINED FROM A 3D LASER SCAN PRODUCED BY LANGAN IN JULY 2020, WITH REFERENCE TO EXISTING SITE GRADES AND BENCHMARKS.



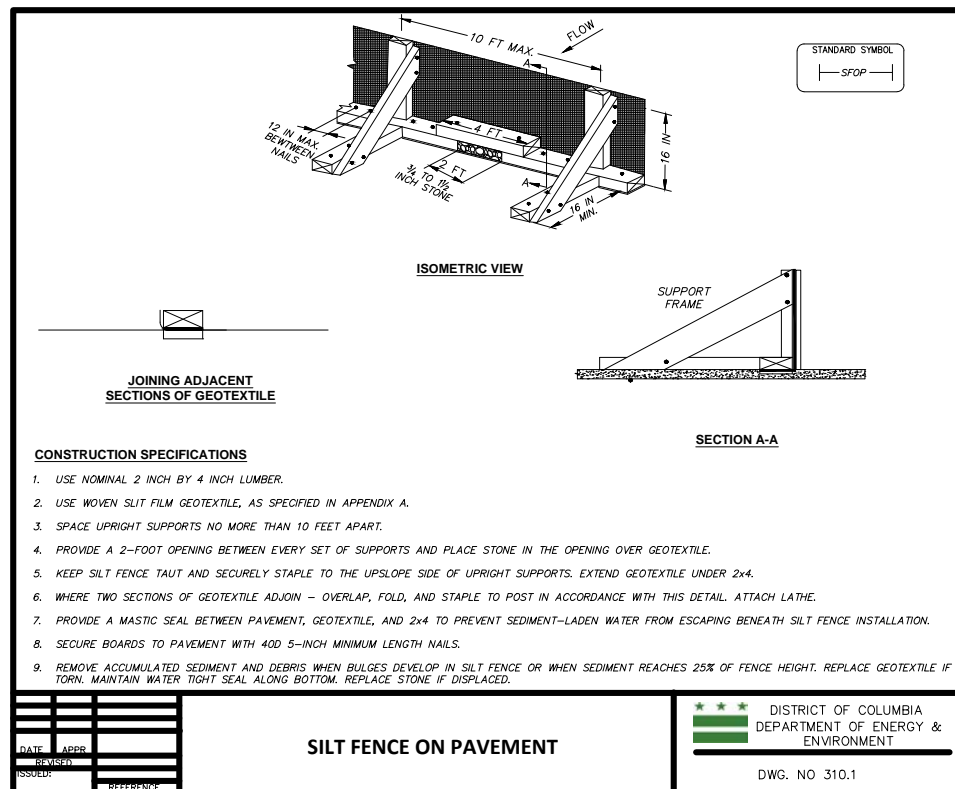
Site Grading Plan



SOURCE: 2011 MARYLAND STANDARDS AND SPECIFICATIONS



SOURCE: 2011 MARYLAND STANDARDS & SPECIFICATIONS



SOURCE: 2011 MARYLAND STANDARDS & SPECIFICATIONS