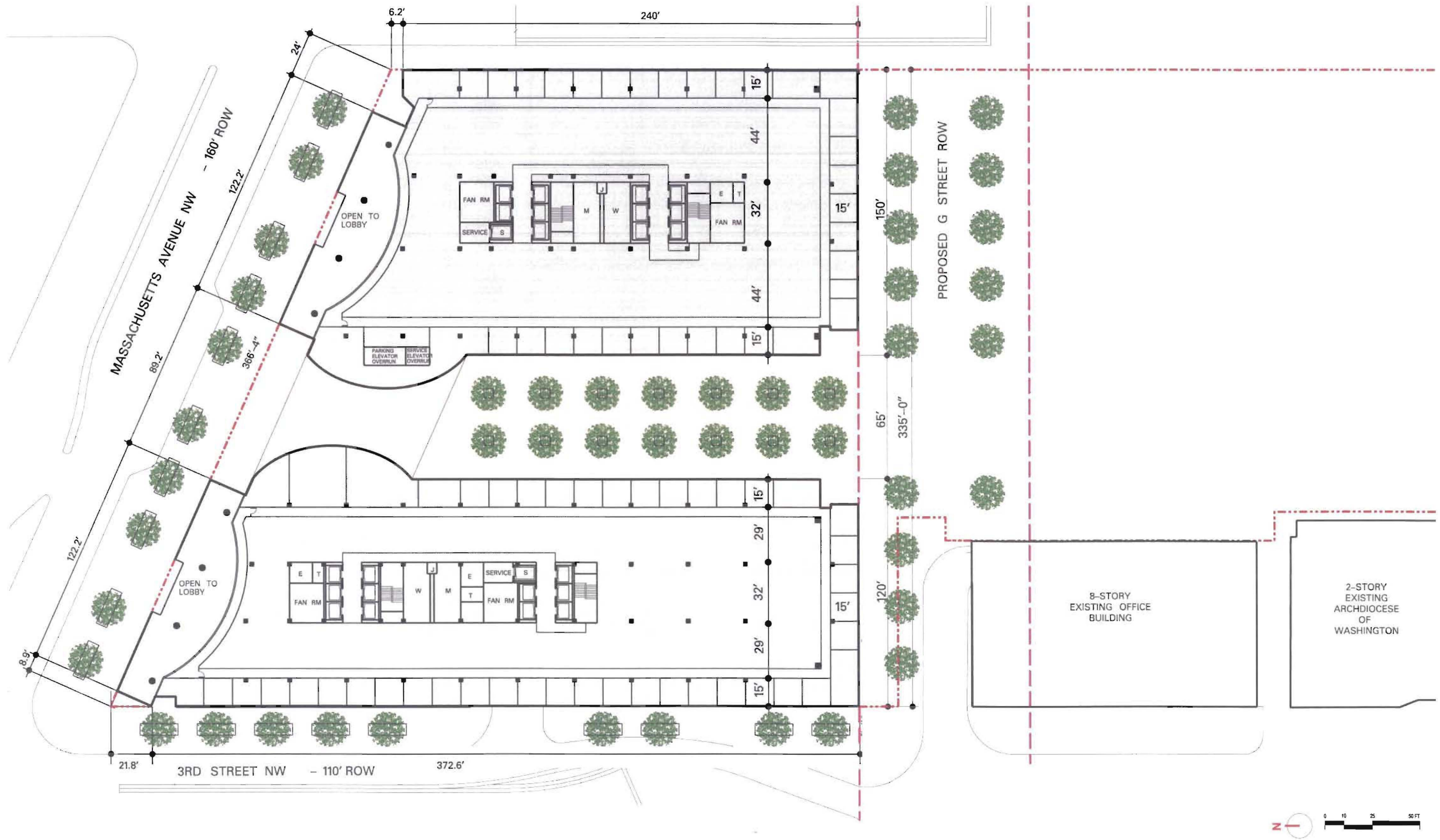


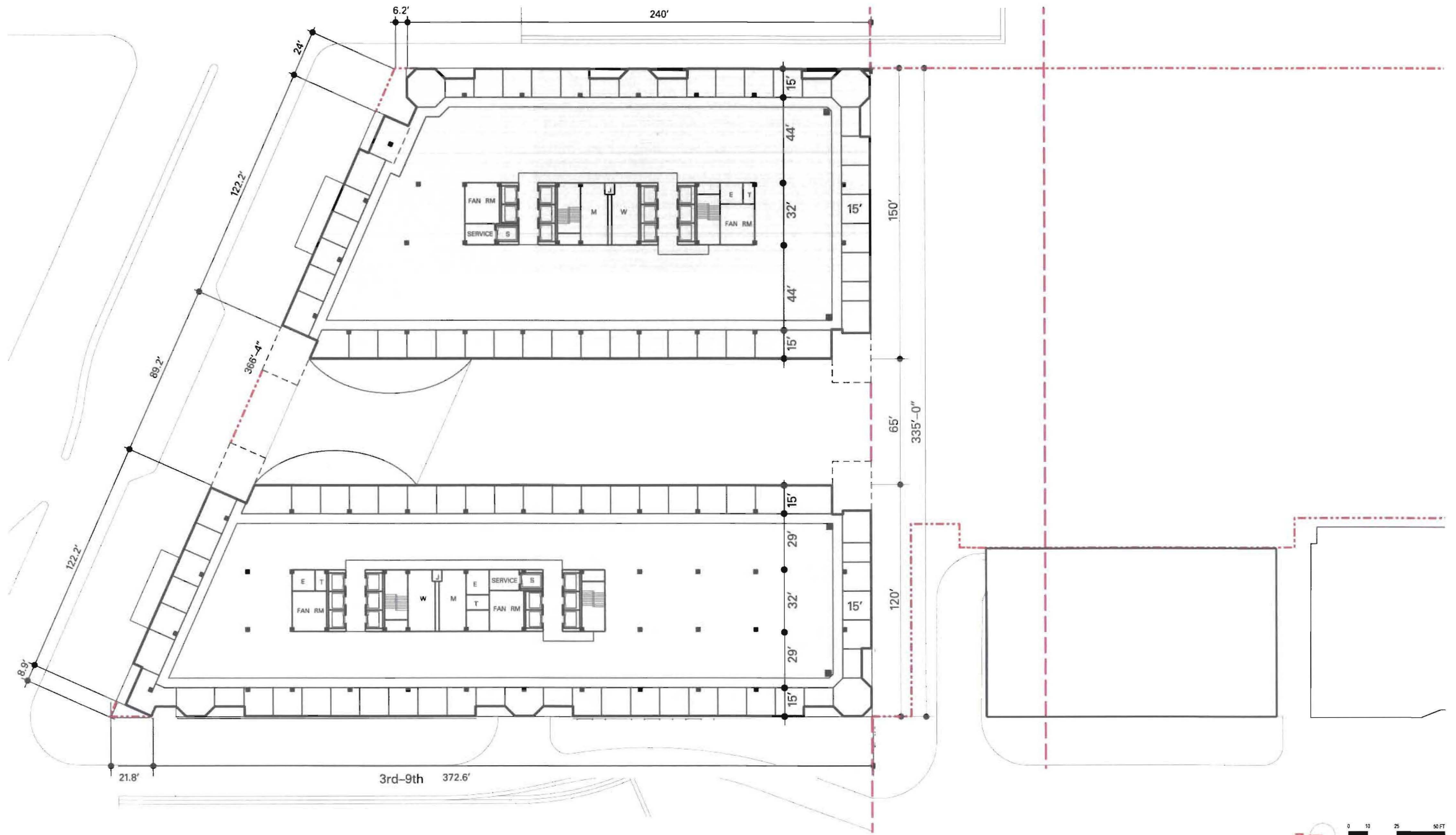
- LEGEND:**
- PROPERTY LINE
 - - - RIGHT OF WAY
 - ⊙ MEASURING POINT ELEVATION



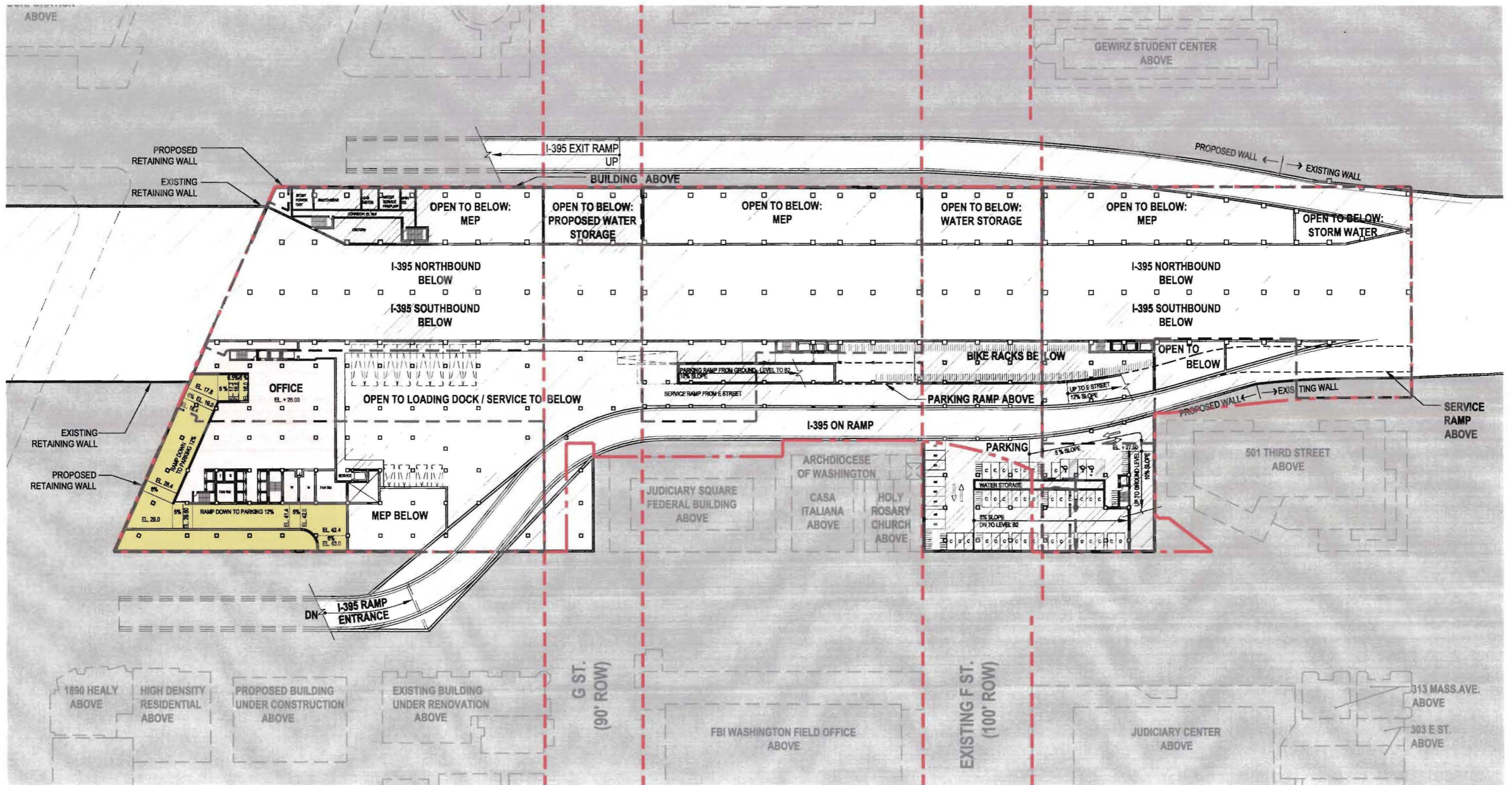
LEGEND:
 - - - - - PROPERTY LINE
 - - - - - RIGHT OF WAY

Return to L'Enfant

2nd Floor Plan - North Block



LEGEND:
 - - - - - PROPERTY LINE
 - - - - - RIGHT OF WAY



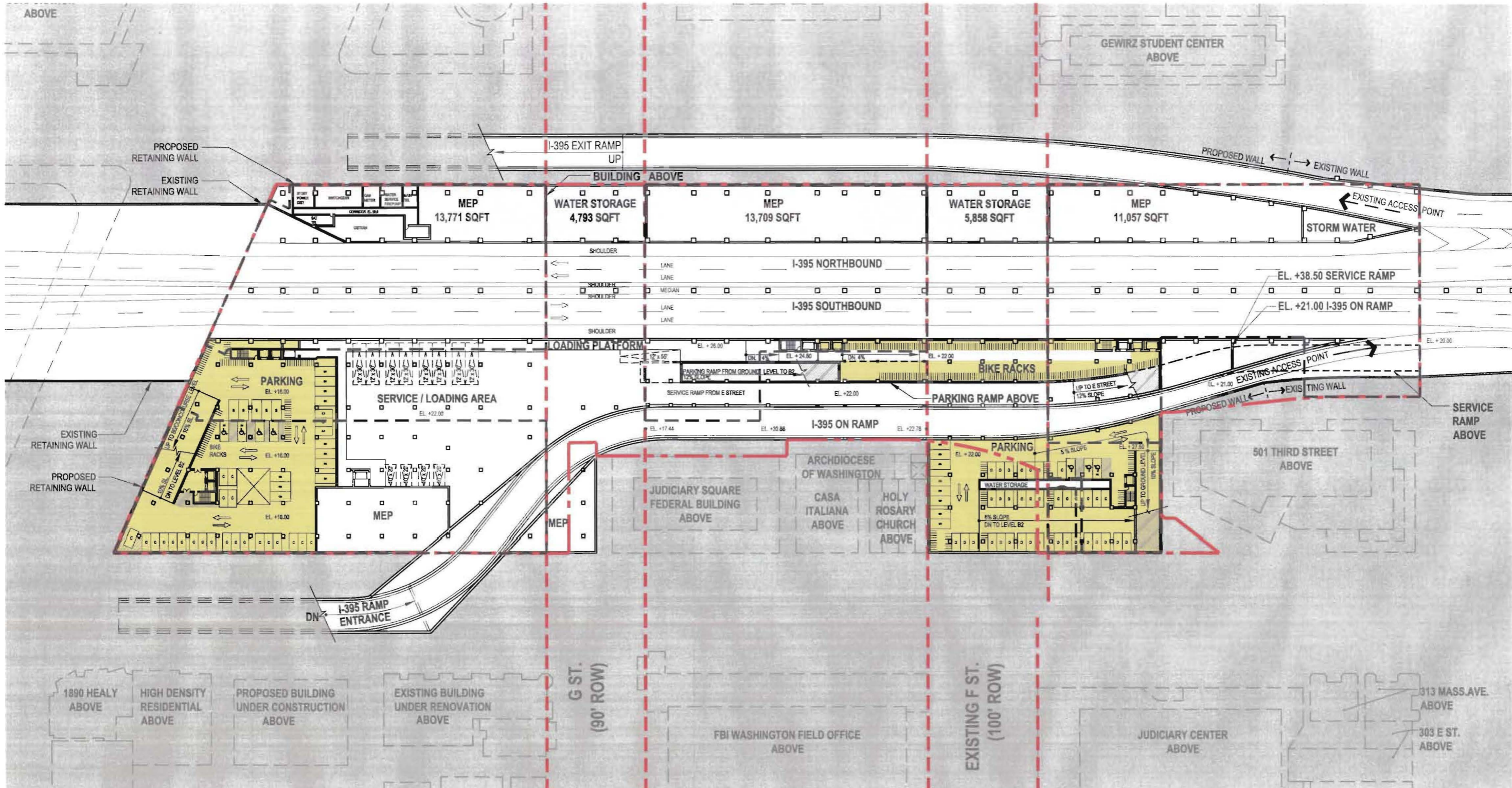
NOTE:

1. The interior layouts shown on the building plans are schematic. Changes to the layouts, not affecting the exterior envelope or the square footage distribution, may occur.
2. Drive aisles will be 20' min. in areas described in DCMR 11, 2117.5.



LEGEND:

- PROPERTY LINE
- RIGHT OF WAY



NOTE:
 1. The interior layouts shown on the building plans are schematic. Changes to the layouts, not affecting the exterior envelope or the square footage distribution, may occur.
 2. Drive aisles will be 20' min. in areas described in DCMR 11, 2117.5.

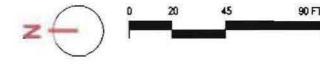
PARKING TABULATION:

OFFICE	Over 2,000 SF, 1 space per 1,800 SF	= 1,102
RETAIL	Over 30,000 SF, 1 space per 3,000 SF	= 23
RESIDENTIAL	1 space per 4 dwelling units	= 38
TOTAL PARKING SPACES		= 1,163

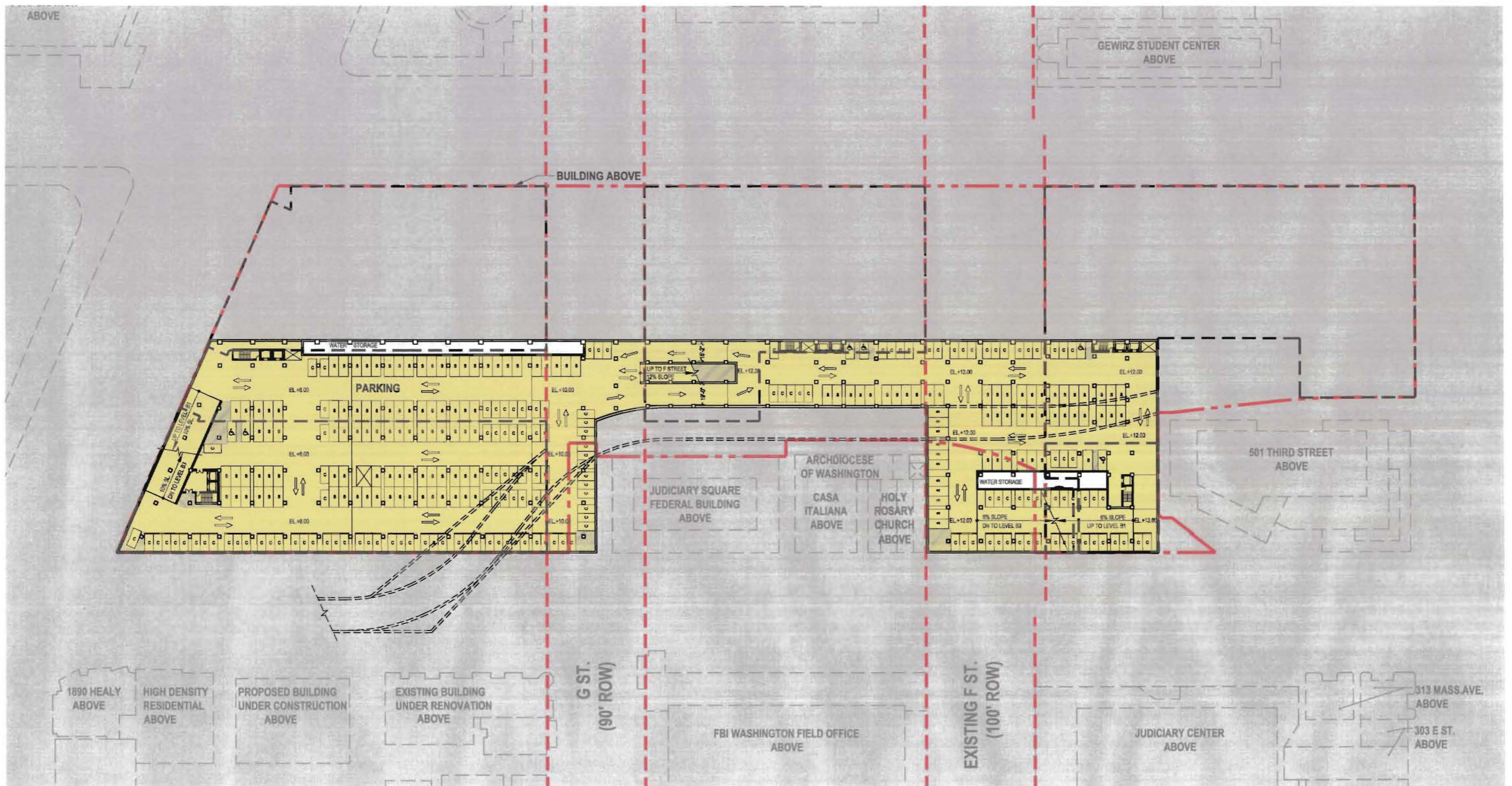
9'x19' spaces - standard	= 677
8'x16' spaces - compact	= 465
Handicap spaces	= 21

BICYCLE PARKING:

BELOW GRADE	345 spaces
AT GRADE	95 spaces
TOTAL SPACES	= 440



LEGEND:
 - - - - - PROPERTY LINE
 - - - - - RIGHT OF WAY
 ||||| BIKE RACKS



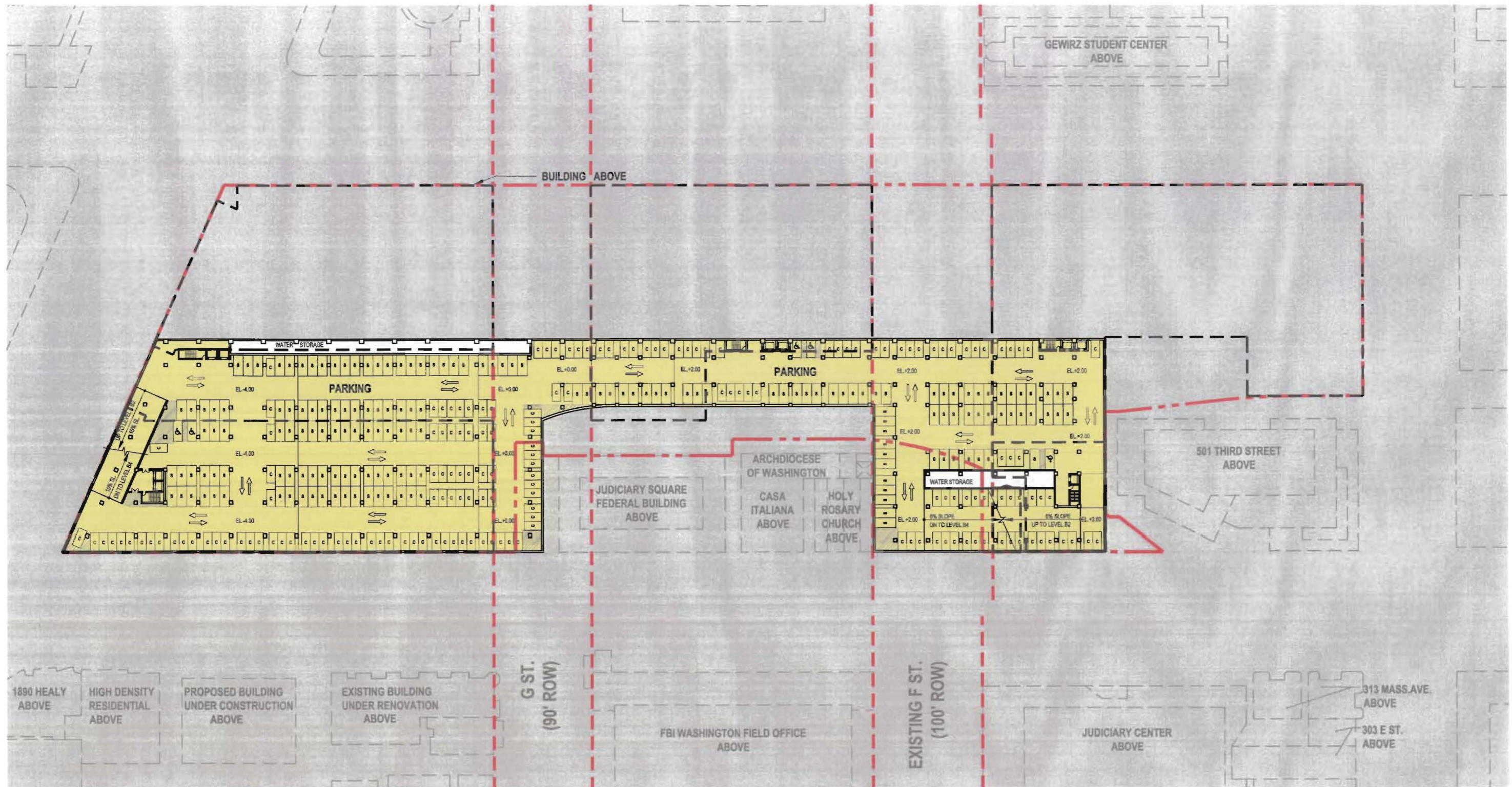
NOTE:

1. The interior layouts shown on the building plans are schematic. Changes to the layouts, not affecting the exterior envelope or the square footage distribution, may occur.
2. Drive aisles will be 20' min. in areas described in DCMR 11, 2117.5.



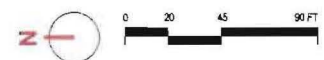
LEGEND:

- PROPERTY LINE
- RIGHT OF WAY



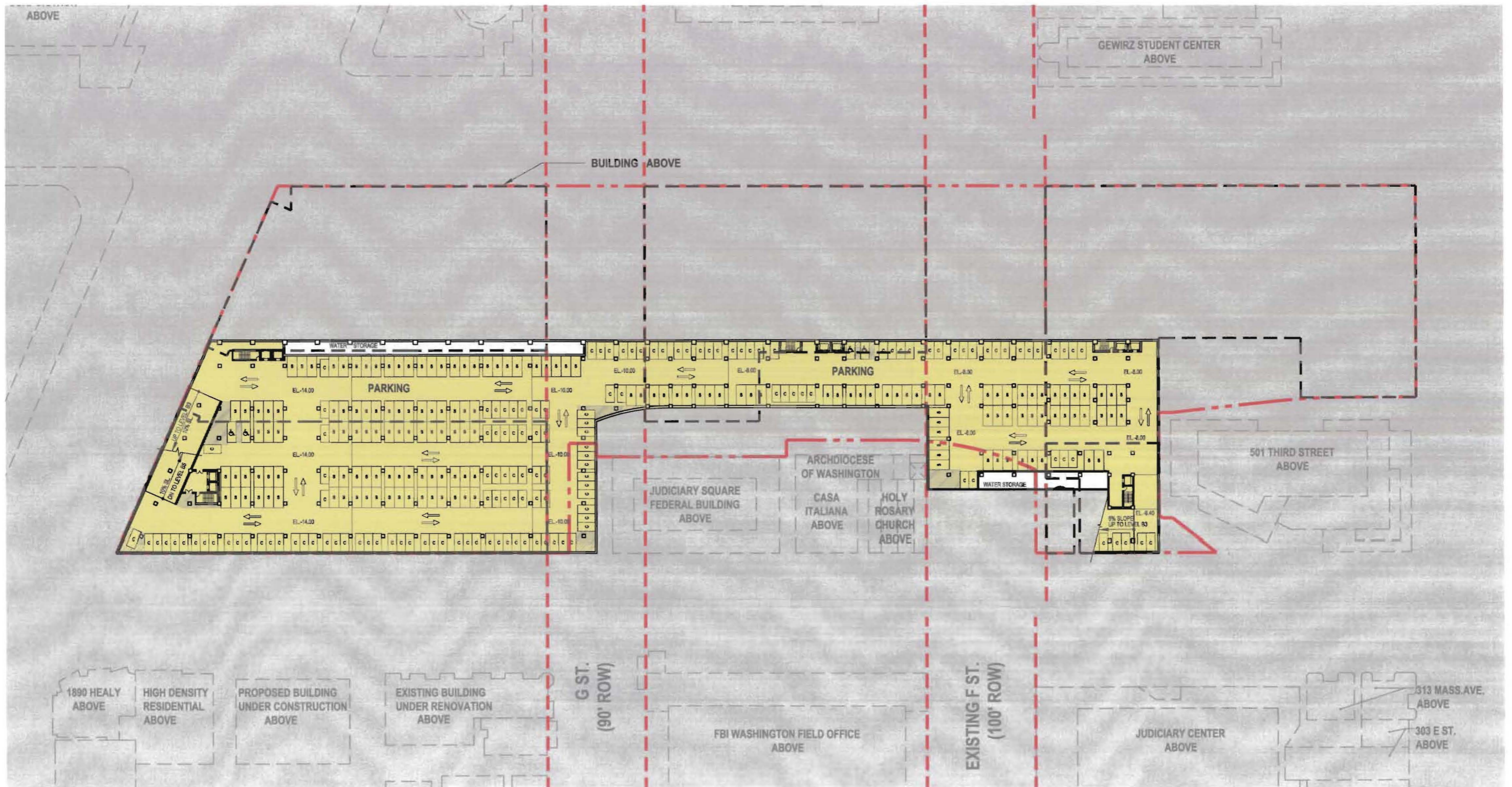
NOTE:

1. The interior layouts shown on the building plans are schematic. Changes to the layouts, not affecting the exterior envelope or the square footage distribution, may occur.
2. Drive aisles will be 20' min. in areas described in DCMR 11, 2117.5.



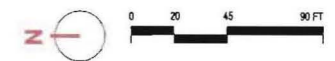
LEGEND:

- — — — — PROPERTY LINE
- - - - - RIGHT OF WAY



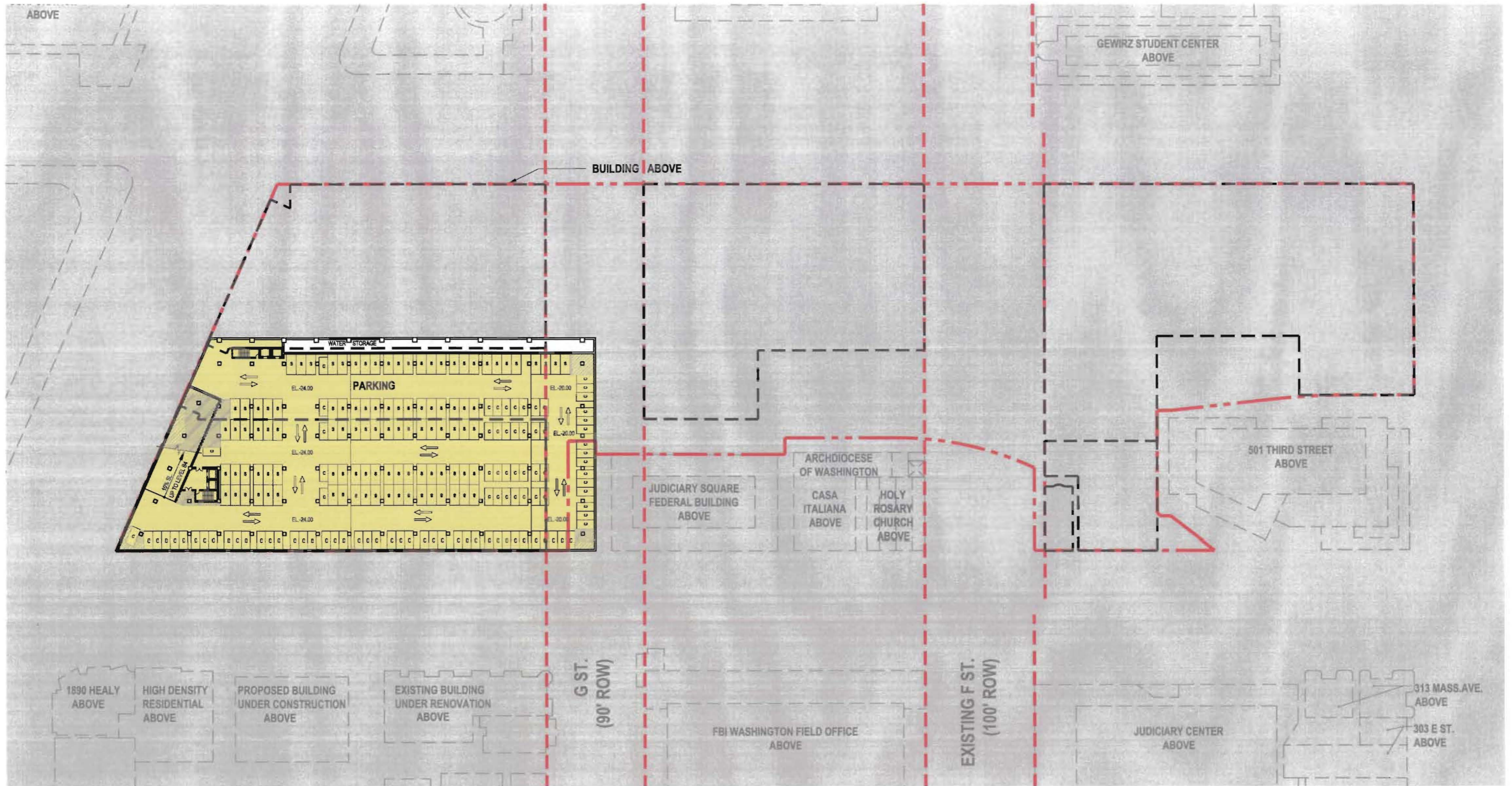
NOTE:

1. The interior layouts shown on the building plans are schematic. Changes to the layouts, not affecting the exterior envelope or the square footage distribution, may occur.
2. Drive aisles will be 20' min. in areas described in DCMR 11, 2117.5.



LEGEND:

- — — — — PROPERTY LINE
- - - - - RIGHT OF WAY



NOTE:

1. The interior layouts shown on the building plans are schematic. Changes to the layouts, not affecting the exterior envelope or the square footage distribution, may occur.
2. Drive aisles will be 20' min. in areas described in DCMR 11, 2117.5.



LEGEND:

- — — — — PROPERTY LINE
- - - - - RIGHT OF WAY