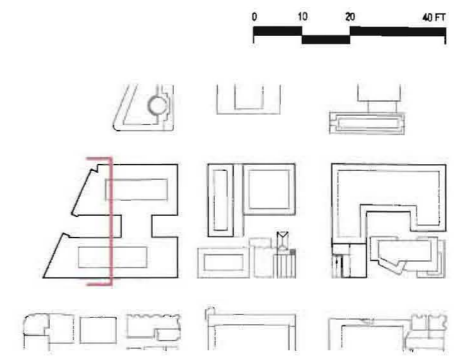


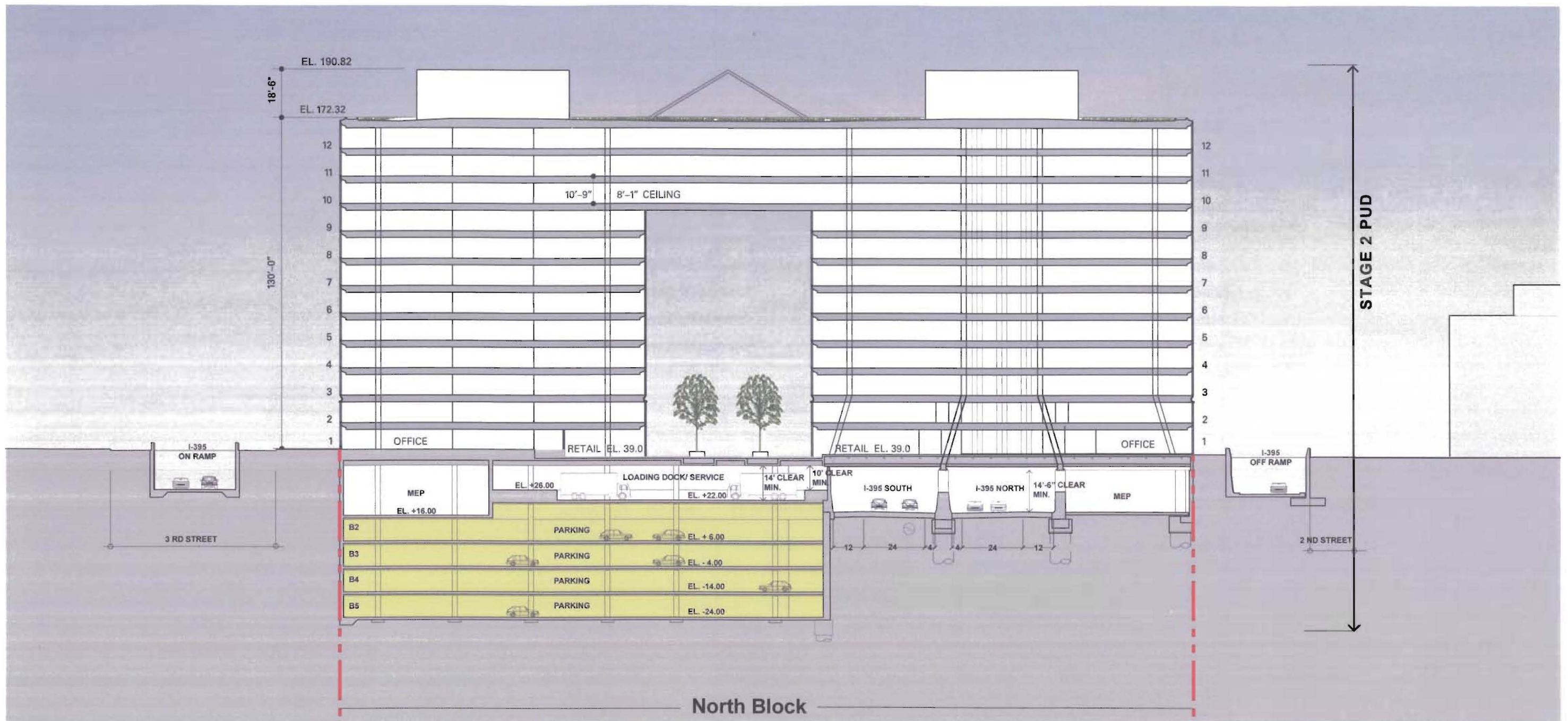
NOTE:

1. Building heights for the North Block are taken from the measuring point of 42.32'. Refer to sheet 1.7 "Detailed Site Circulation Plan" for measuring point location.
2. Refer to sheet 1.4 "Extent of Consolidated PUD Submission" for scope of PUD

LEGEND:

- PROPERTY LINE
- ⊙ MEASURING POINT ELEVATION



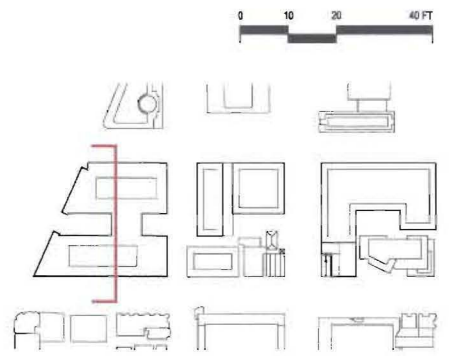


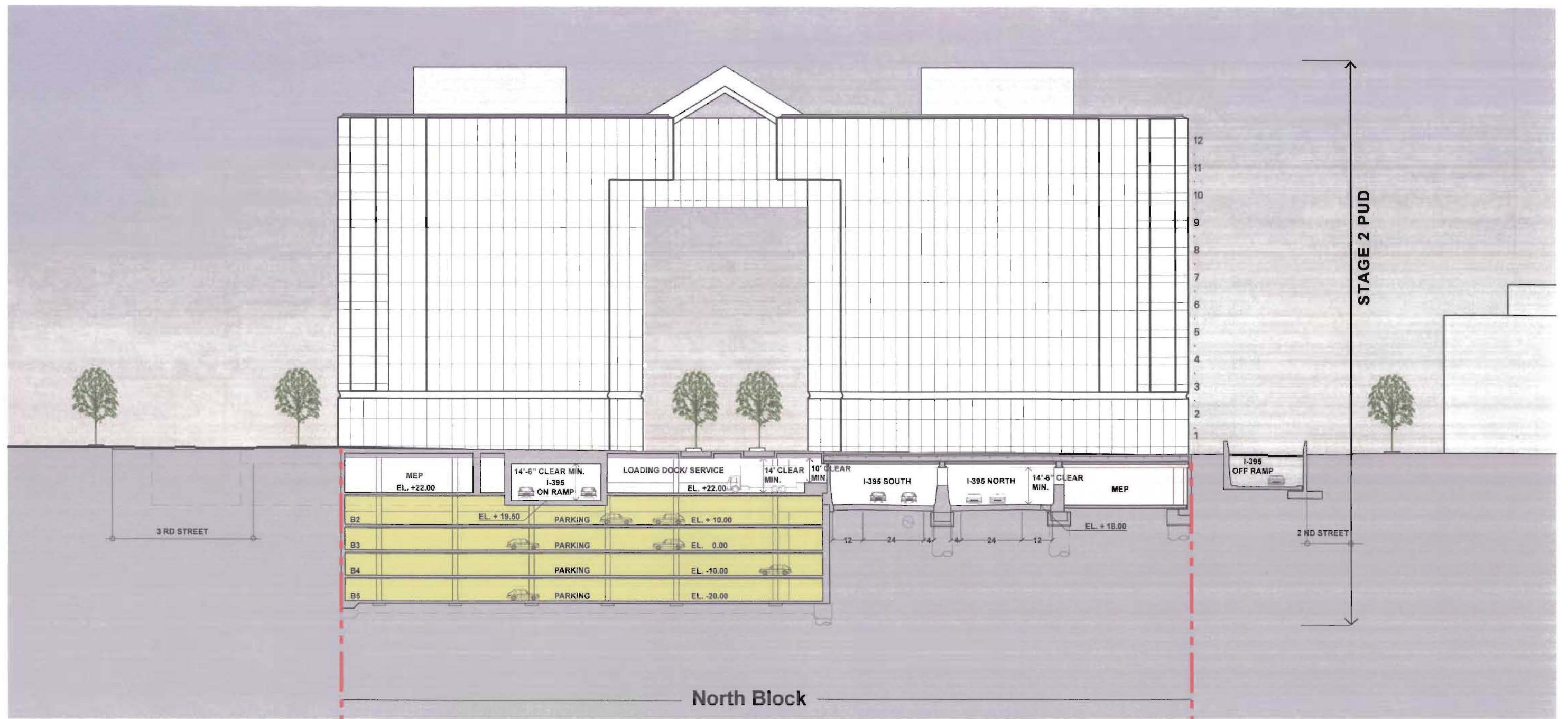
NOTE:

1. Building heights for the North Block are taken from the measuring point of 42.32'. Refer to sheet 1.7 "Detailed Site Circulation Plan" for measuring point location.
2. Refer to sheet 1.4 "Extent of Consolidated PUD Submission" for scope of PUD

LEGEND:

-  PROPERTY LINE
-  MEASURING POINT ELEVATION



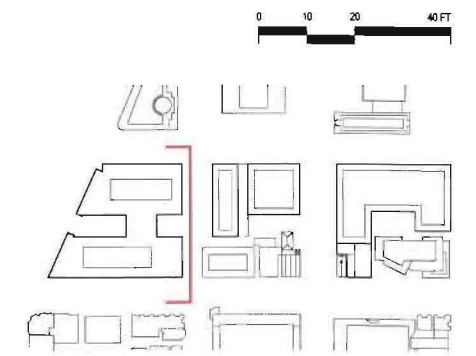


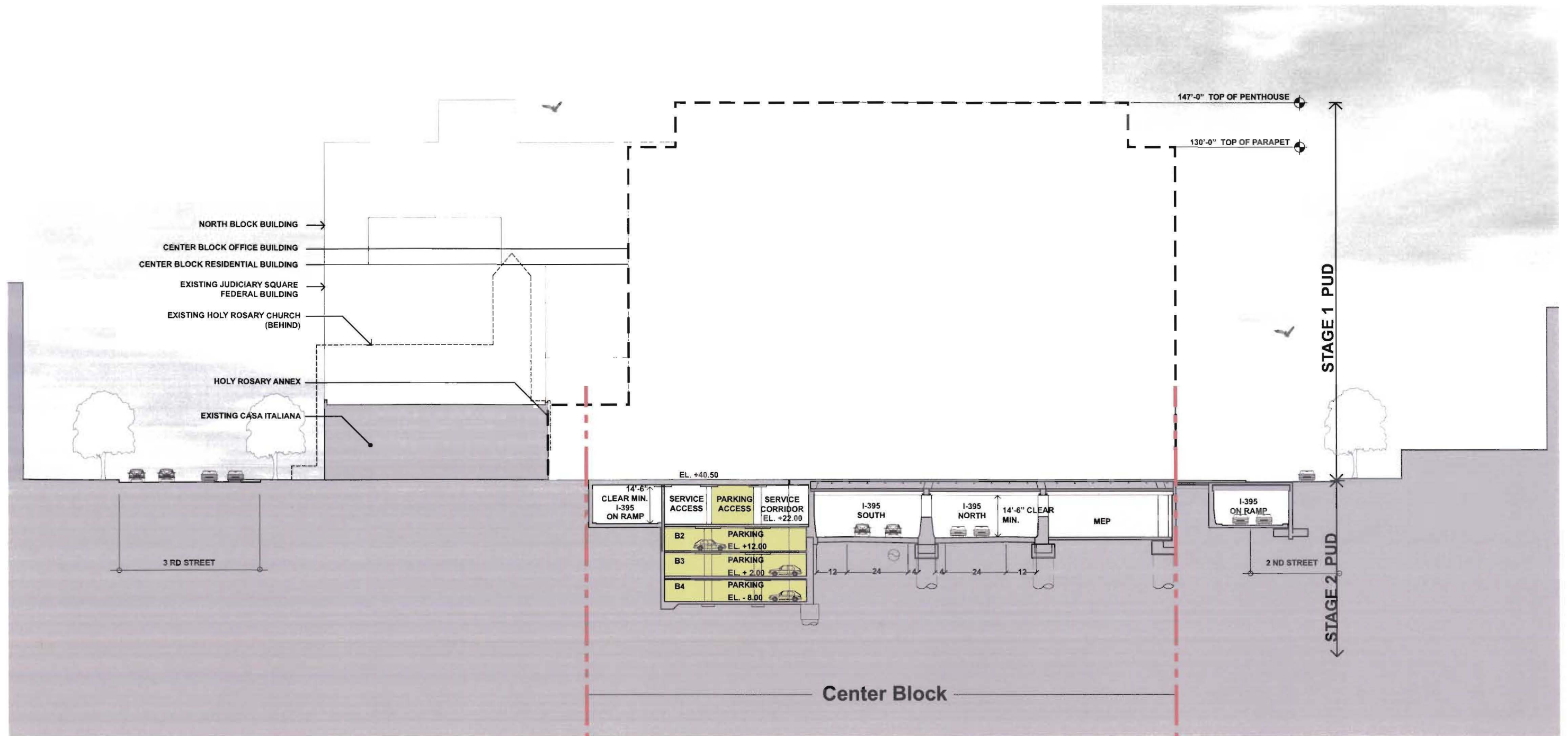
NOTE:

1. Building heights for the North Block are taken from the measuring point of 42.32'. Refer to sheet 1.7 "Detailed Site Circulation Plan" for measuring point location.
2. Refer to sheet 1.4 "Extent of Consolidated PUD Submission" for scope of PUD

LEGEND:

- PROPERTY LINE
- ⊙ MEASURING POINT ELEVATION



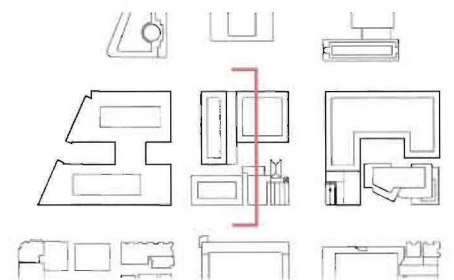


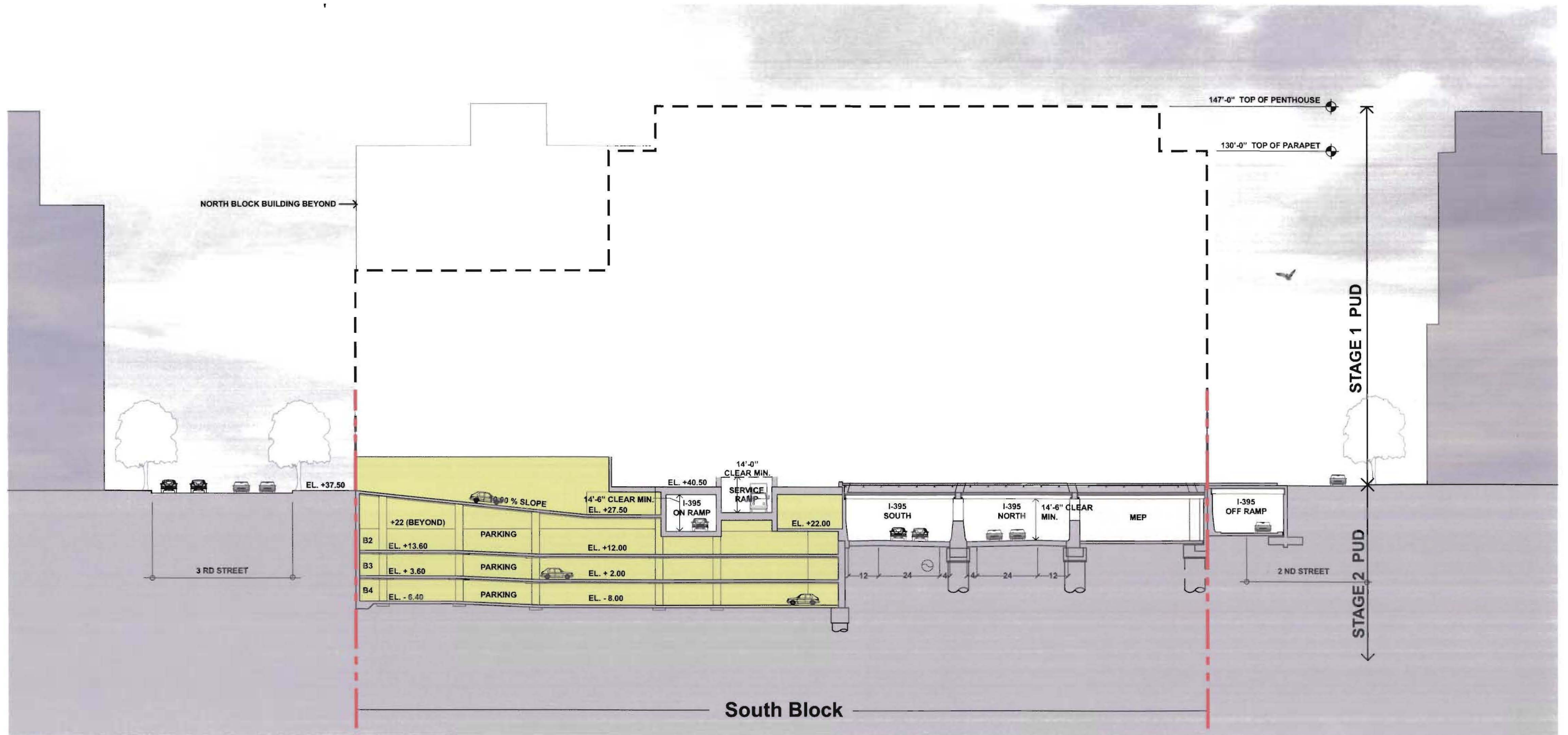
NOTE:

1. Building heights for the Center Block are taken from the measuring point of 40.50'. Refer to sheet 1.7 "Detailed Site Circulation Plan" for measuring point location.
2. Refer to sheet 1.4 "Extent of Consolidated PUD Submission" for scope of PUD

LEGEND:

- PROPERTY LINE
- ⊙ MEASURING POINT ELEVATION



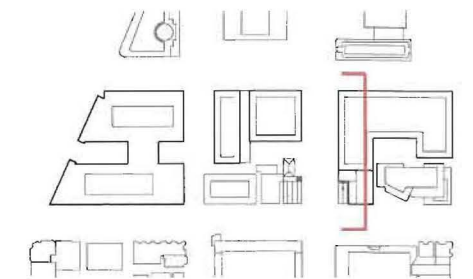


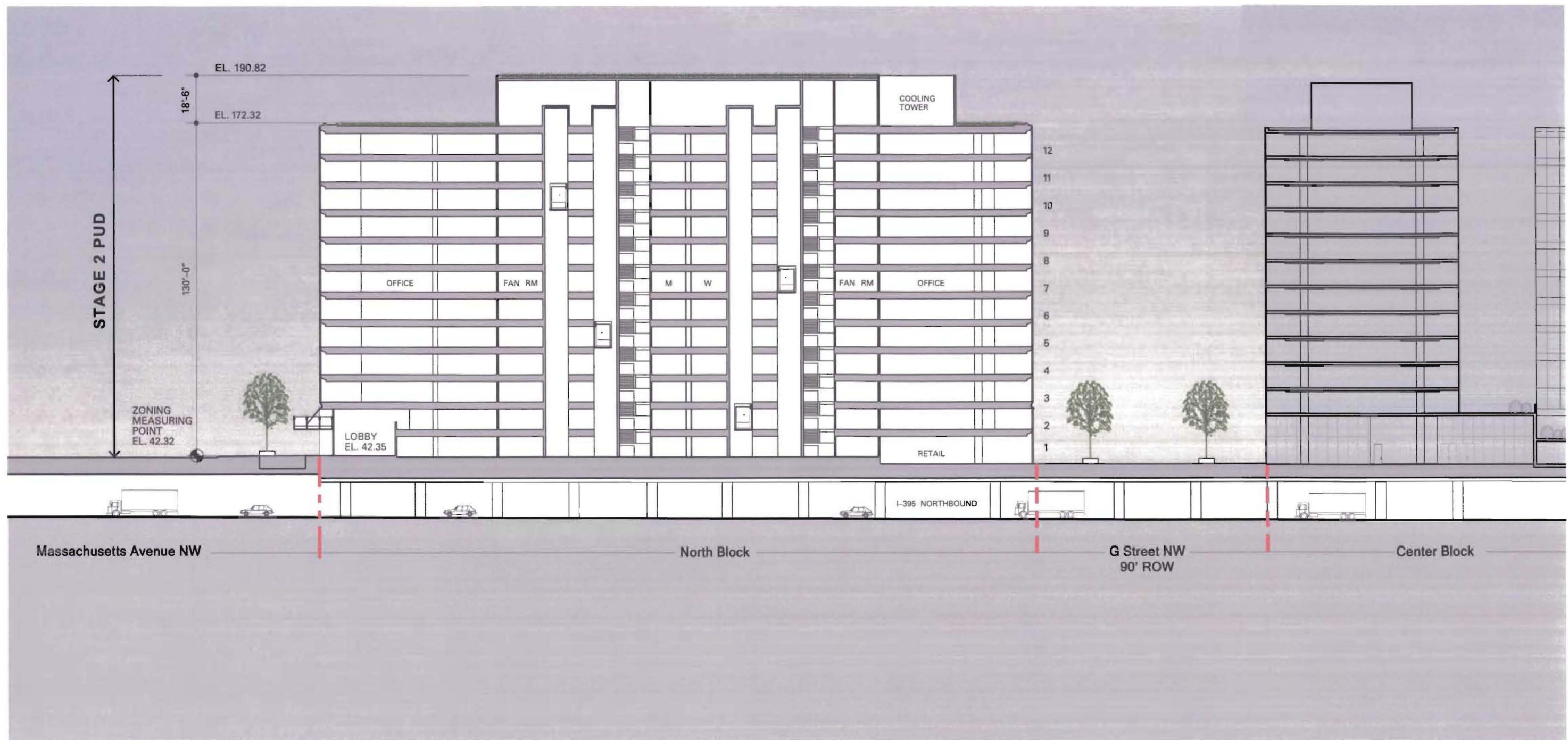
NOTE:

1. Building heights for the South Block are taken from the measuring point of 40.50'. Refer to sheet 1.7 "Detailed Site Circulation Plan" for measuring point location.
2. Refer to sheet 1.4 "Extent of Consolidated PUD Submission" for scope of PUD

LEGEND:

- PROPERTY LINE
- ⊙ MEASURING POINT ELEVATION



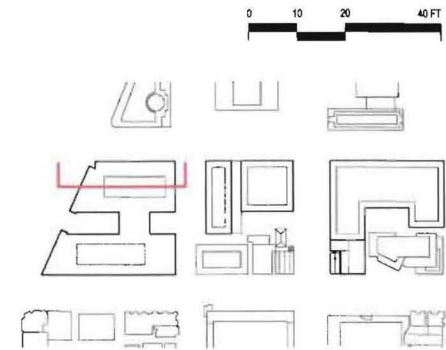


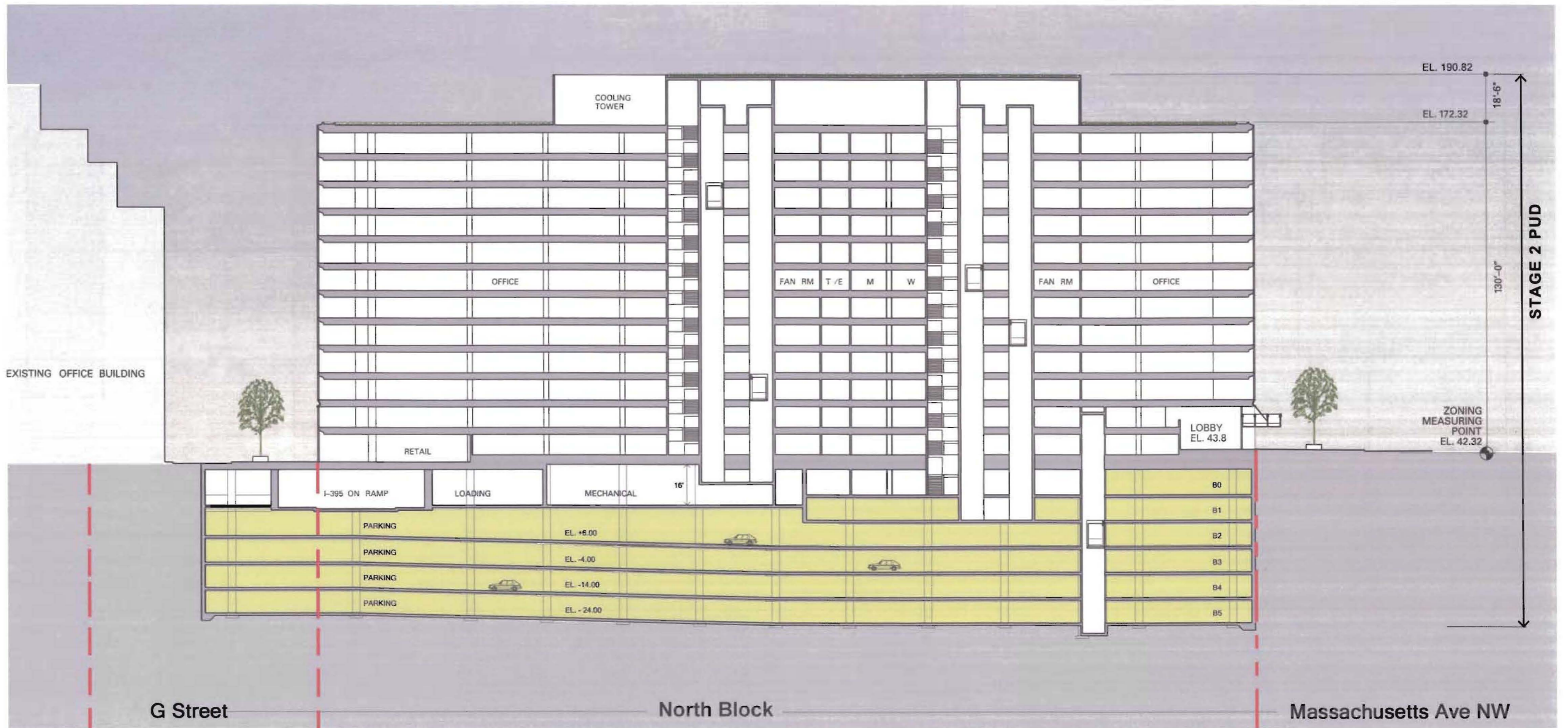
NOTE:

1. Building heights for the North Block are taken from the measuring point of 42.32'. Refer to sheet 1.7 "Detailed Site Circulation Plan" for measuring point location.
2. Refer to sheet 1.4 "Extent of Consolidated PUD Submission" for scope of PUD

LEGEND:

- PROPERTY LINE
- RIGHT OF WAY
- ⊙ MEASURING POINT ELEVATION






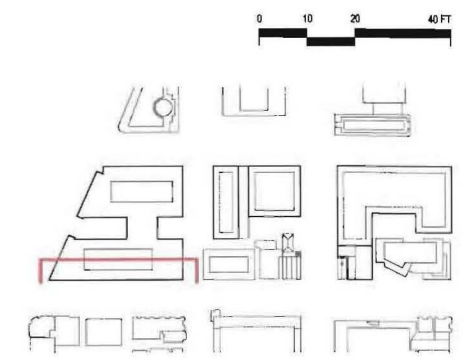


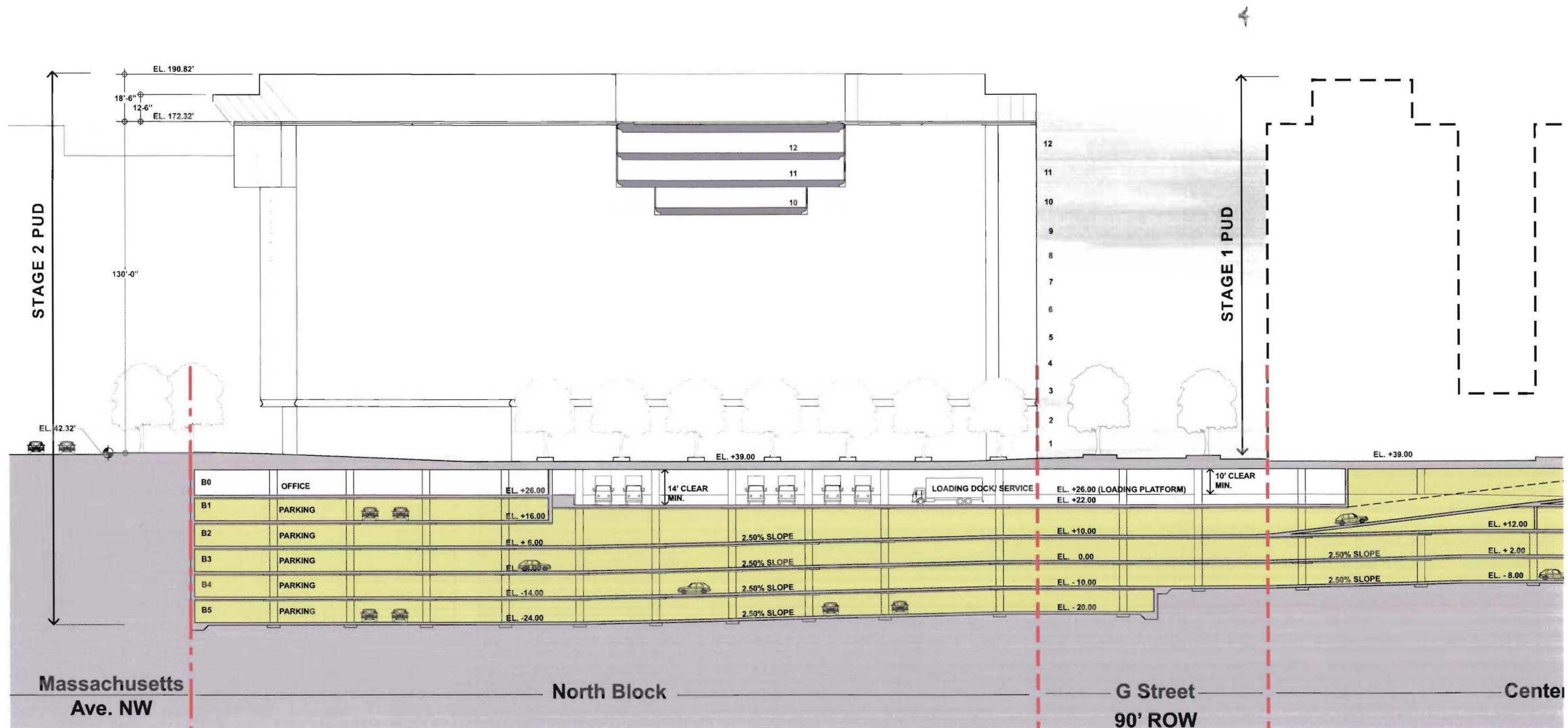
NOTE:

1. Building heights for the North Block are taken from the measuring point of 42.32'. Refer to sheet 1.7 "Detailed Site Circulation Plan" for measuring point location.
2. Refer to sheet 1.4 "Extent of Consolidated PUD Submission" for scope of PUD

LEGEND:

-  PROPERTY LINE
-  RIGHT OF WAY
-  MEASURING POINT ELEVATION

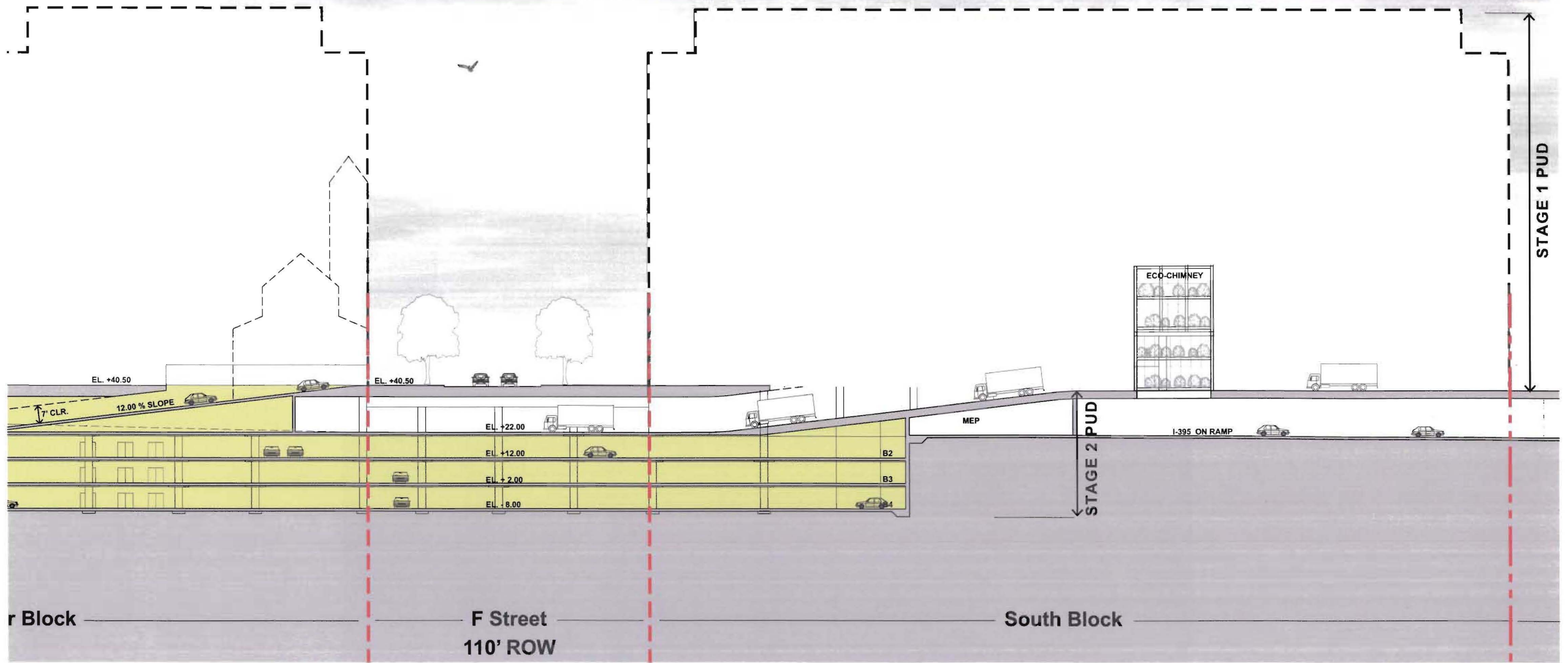




NOTE:
 1. North Block building heights are taken from the measuring point of 42.32'.
 Refer to sheet 1.7 "Detailed Site Circulation Plan" for measuring point location.
 2. Refer to sheet 1.4 "Extent of Consolidated PUD Submission" for scope of PUD

LEGEND:

- - - PROPERTY LINE
- - - RIGHT OF WAY
- MEASURING POINT ELEVATION

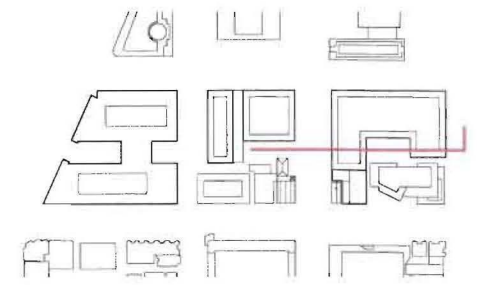


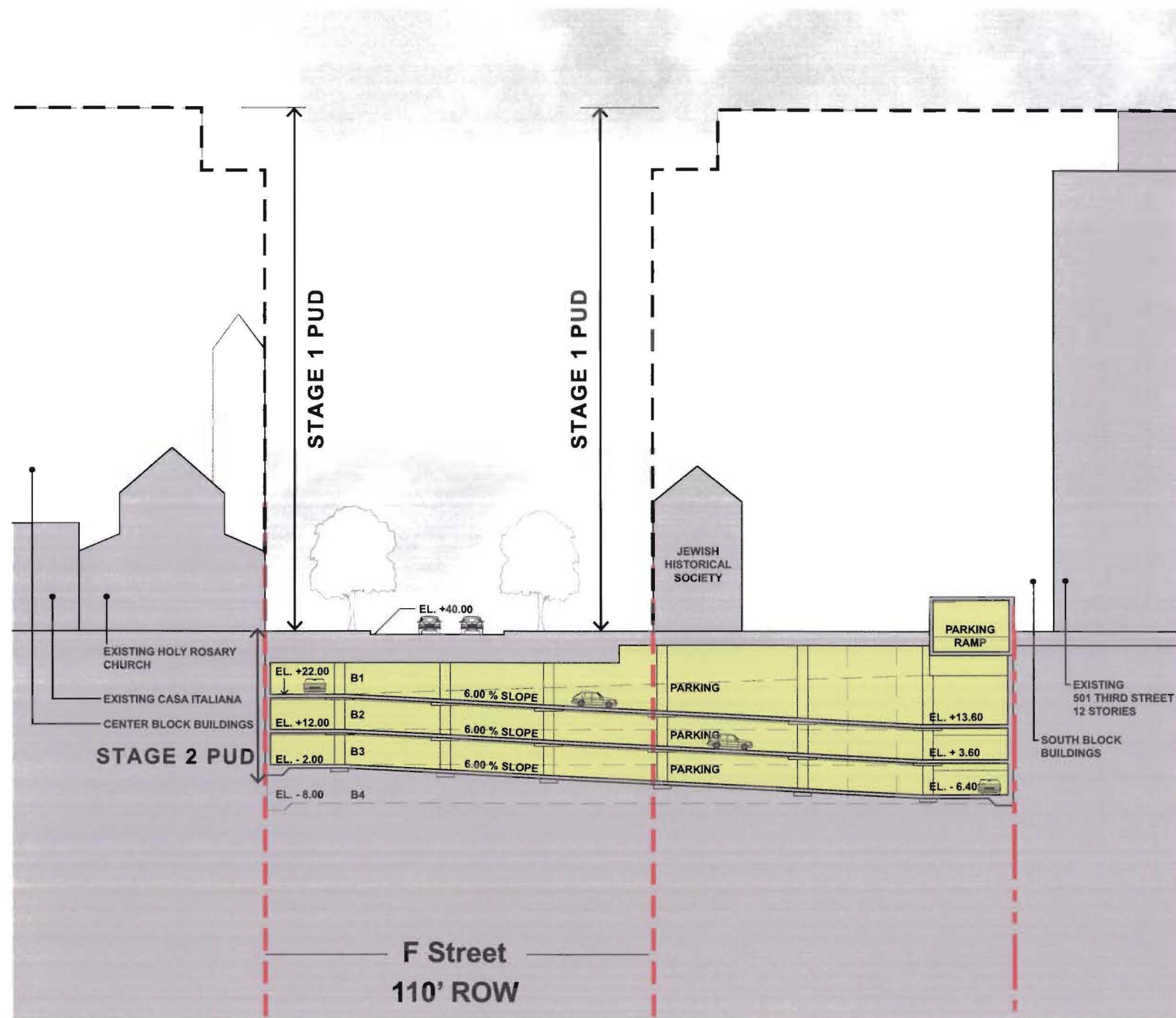
NOTE:

1. Refer to sheet 1.4 "Extent of Consolidated PUD Submission" for scope of PUD

LEGEND:

- PROPERTY LINE
- RIGHT OF WAY
- MEASURING POINT ELEVATION





NOTE:
1. Refer to sheet 1.4 "Extent of Consolidated PUD Submission" for scope of PUD

LEGEND:

-  PROPERTY LINE
-  MEASURING POINT ELEVATION

