

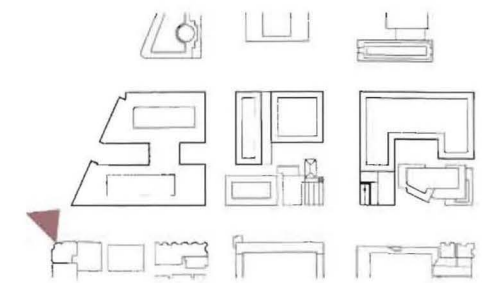
Return to L'Enfant

2.2 Consolidated PUD Application

December 31, 2008

Perspective View - North Block from the North

KEVIN ROCHE JOHN DINKELOO AND ASSOCIATES LLC **Louis Dreyfus Property Group**



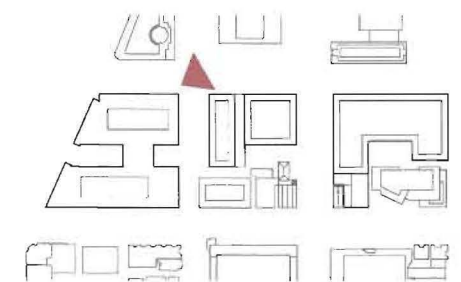
Return to L'Enfant

Consolidated PUD Application

December 31, 2008

Perspective View - North Block from Northwest

KEVIN ROCHE JOHN DINKELOO AND ASSOCIATES LLC **Louis Dreyfus Property Group** 2 3



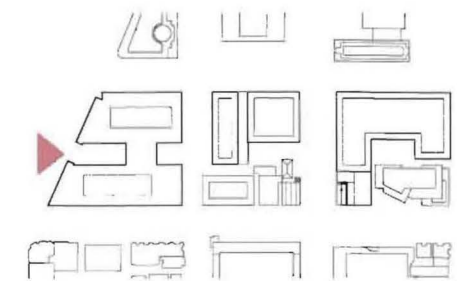
Return to L'Enfant

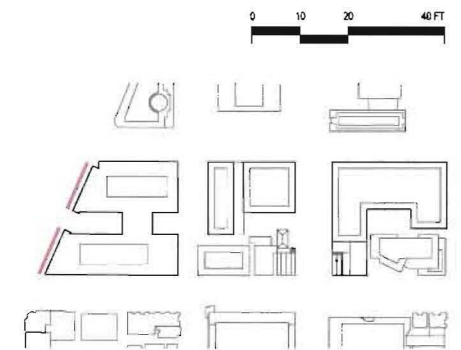
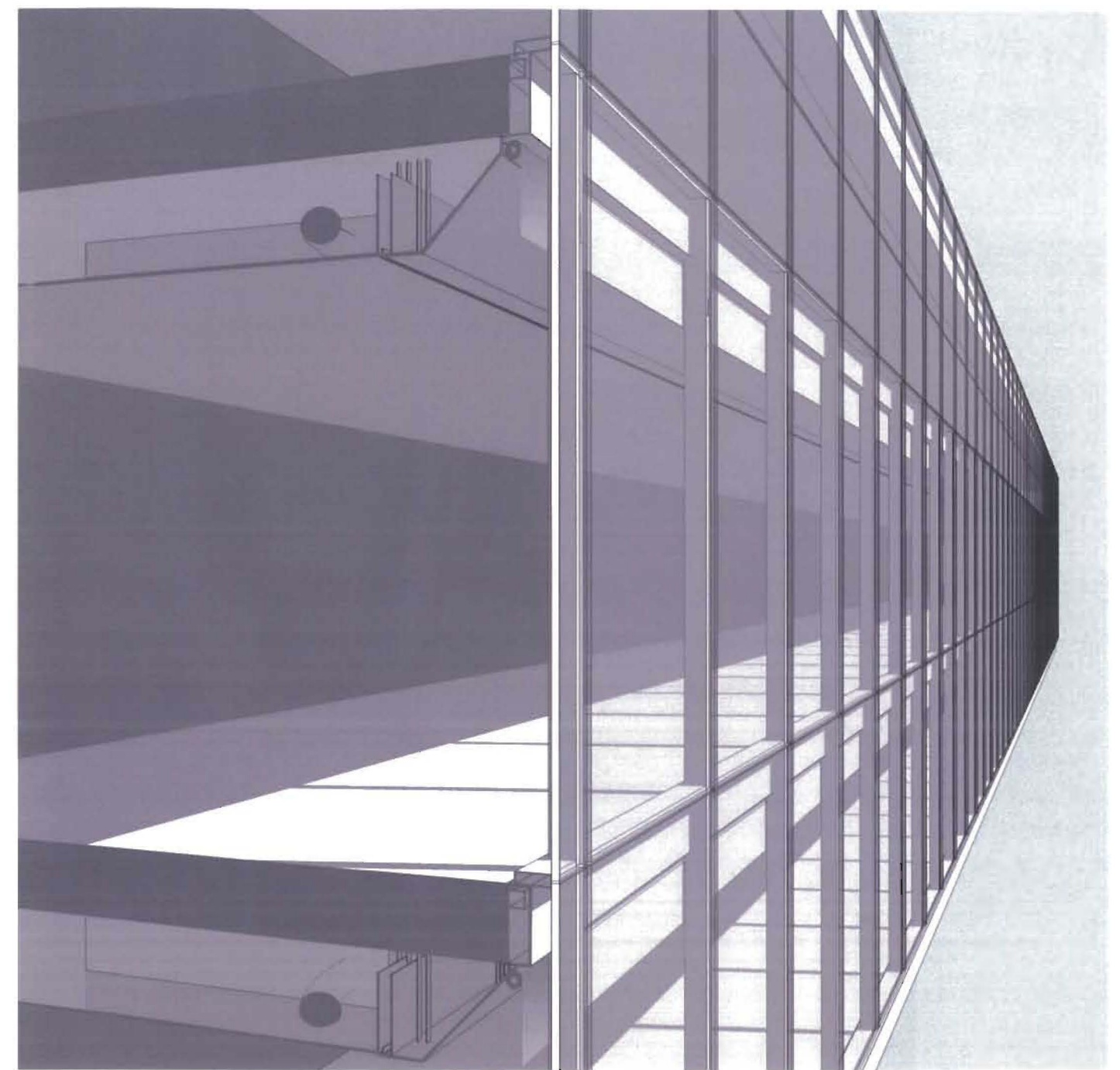
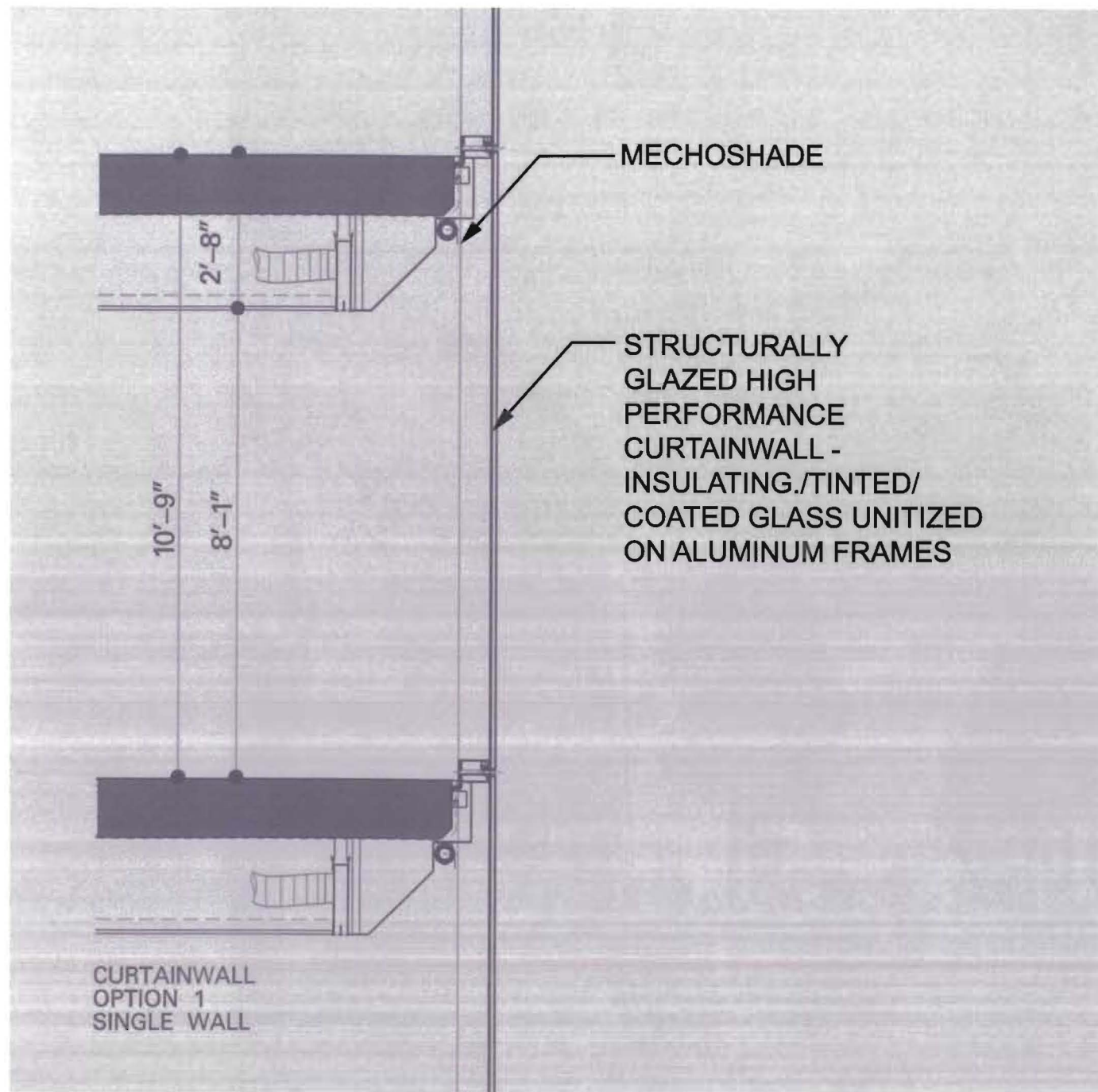
2.4 Consolidated PUD Application

December 31, 2008

Perspective View - North Block & G Street from Southeast

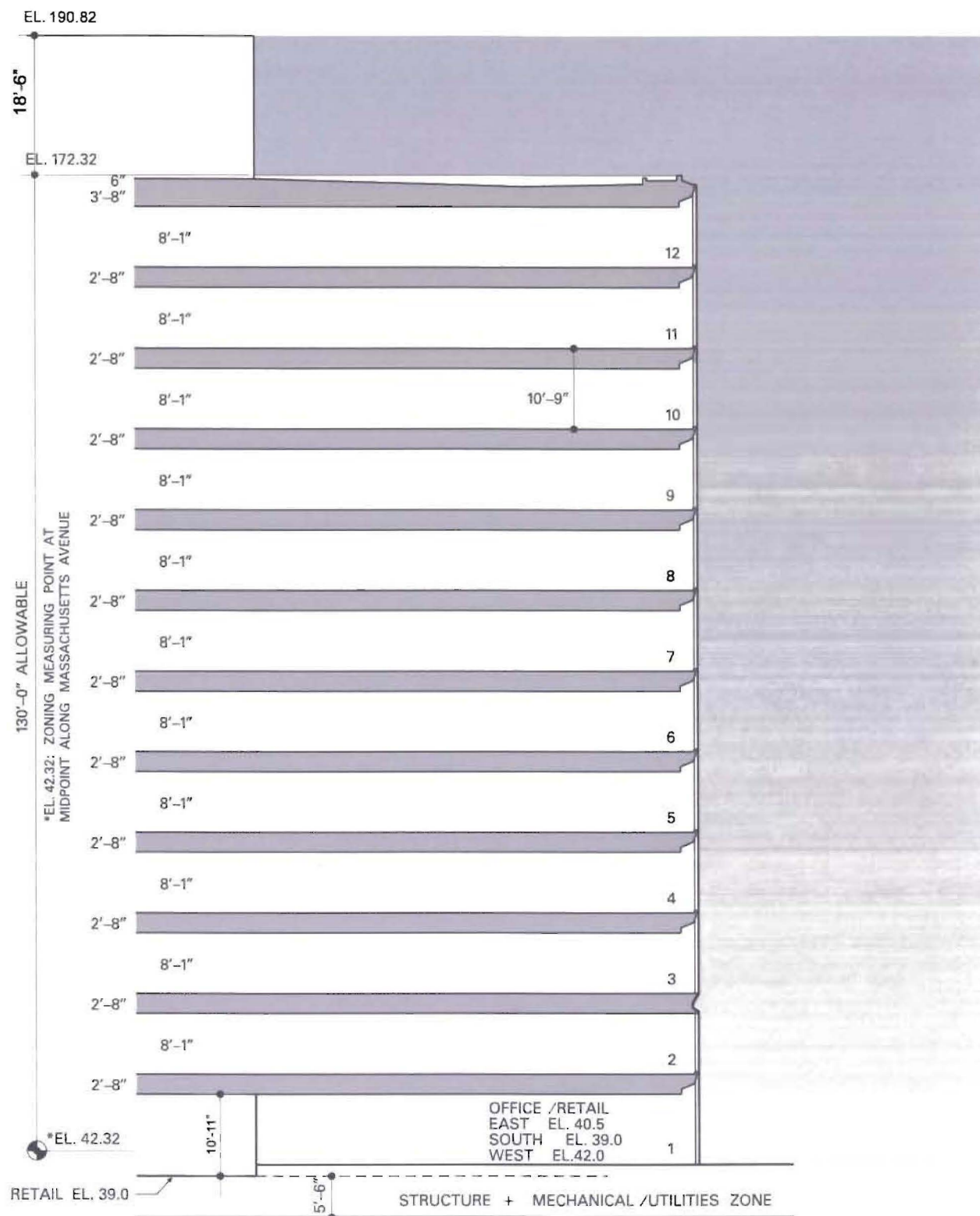
KEVIN ROCHE JOHN DINKELOO AND ASSOCIATES LLC **Louis Dreyfus Property Group**



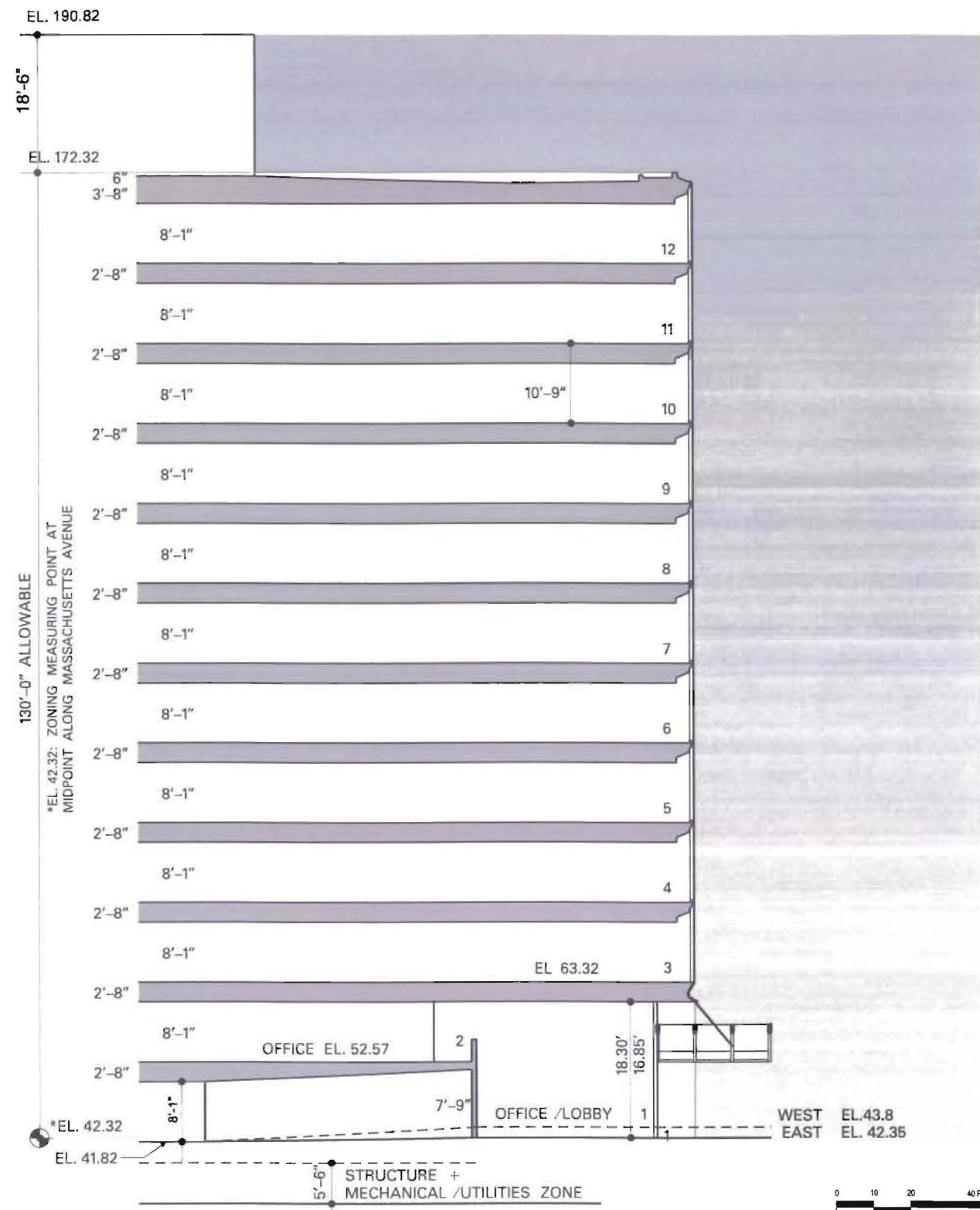


Return to L'Enfant

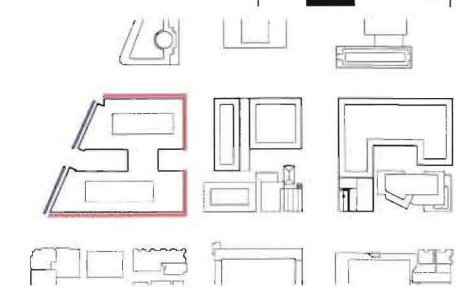
Section Detail at North Curtainwall - North Block

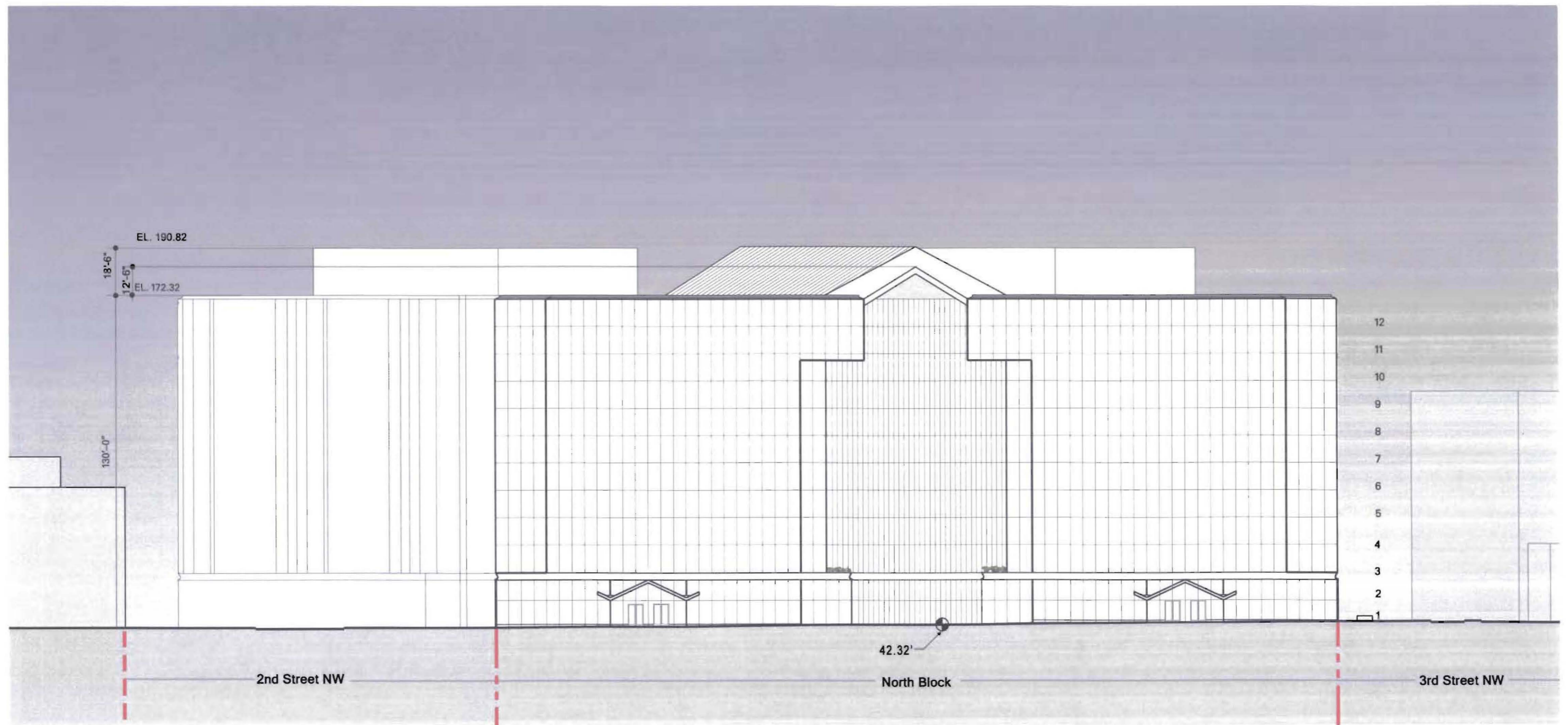


SECTION THROUGH EAST, WEST AND SOUTH FACADE



SECTION THROUGH NORTH






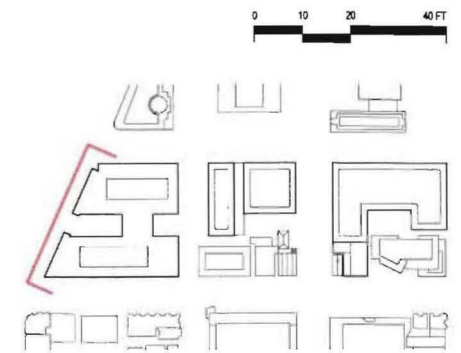


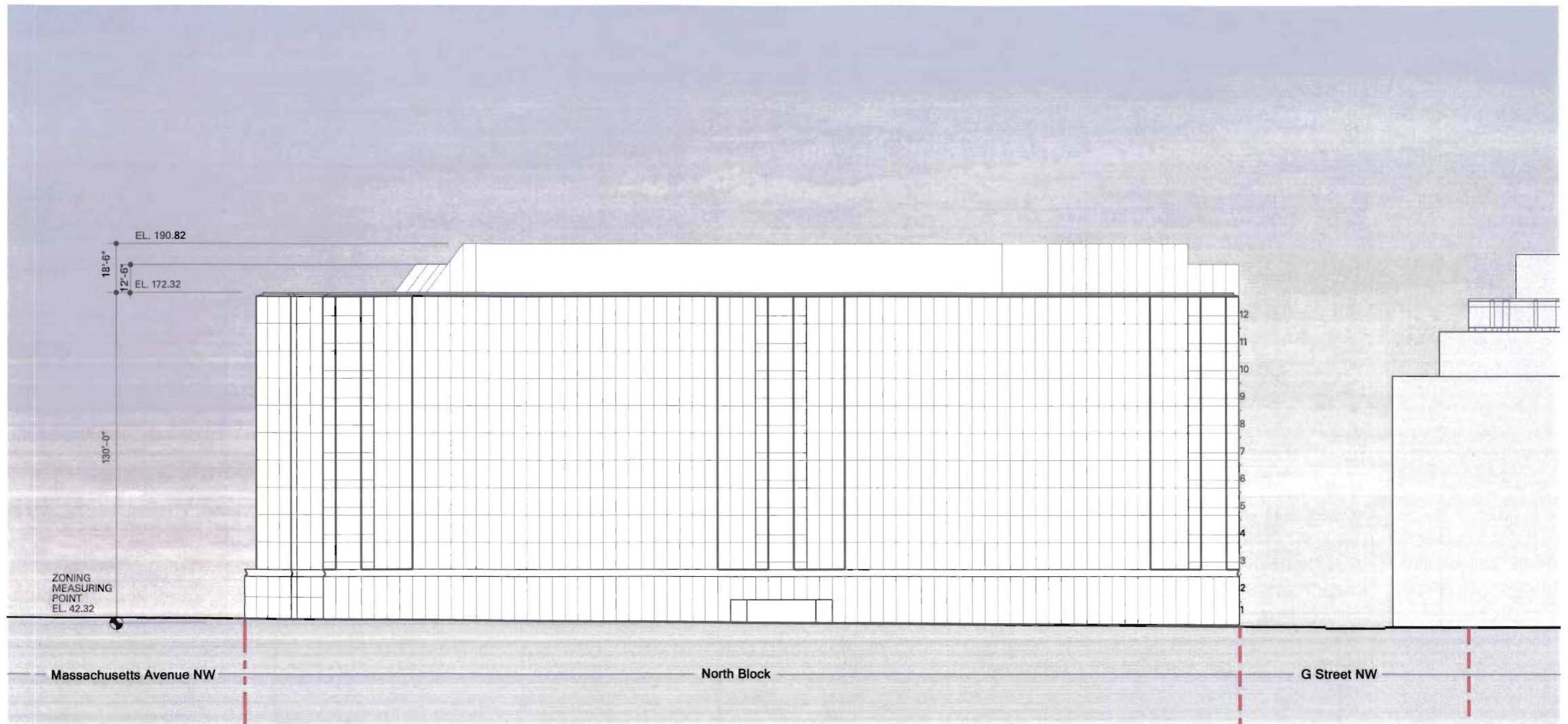
NOTE:

1. Building heights for the North Block are taken from the measuring point of 42.32'. Refer to sheet 1.7 "Detailed Site Circulation Plan" for measuring point location.
2. Refer to sheet 1.4 "Extent of Consolidated PUD Submission" for scope of PUD

LEGEND:

-  PROPERTY LINE
-  RIGHT OF WAY
-  MEASURING POINT ELEVATION






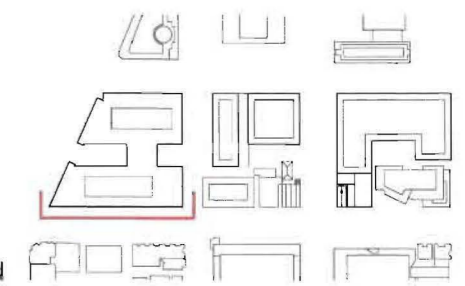


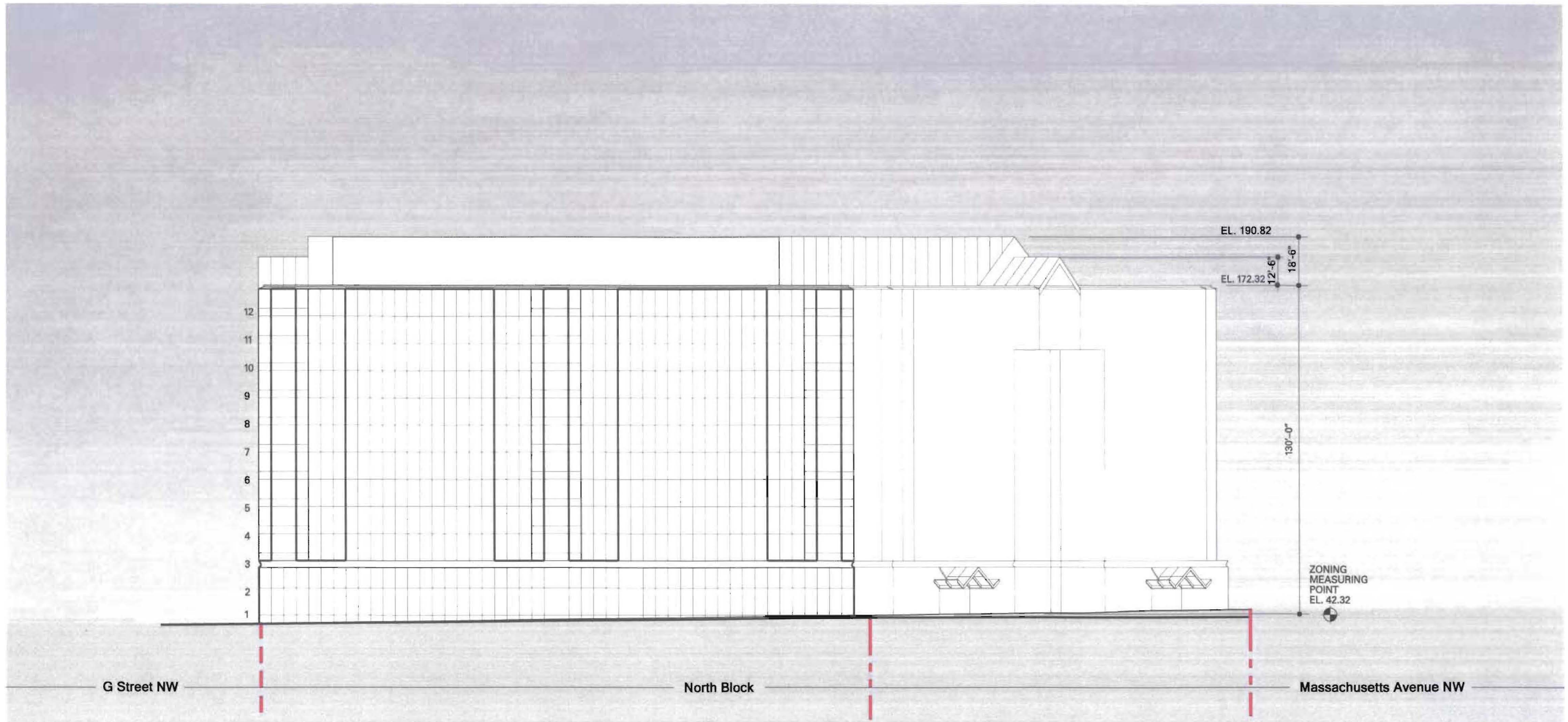
NOTE:

1. Building heights for the North Block are taken from the measuring point of 42.32'. Refer to sheet 1.7 "Detailed Site Circulation Plan" for measuring point location.
2. Refer to sheet 1.4 "Extent of Consolidated PUD Submission" for scope of PUD

LEGEND:

-  PROPERTY LINE
-  RIGHT OF WAY
-  MEASURING POINT ELEVATION





NOTE:
 1. Building heights for the North Block are taken from the measuring point of 42.32'. Refer to sheet 1.7 "Detailed Site Circulation Plan" for measuring point location.
 2. Refer to sheet 1.4 "Extent of Consolidated PUD Submission" for scope of PUD

LEGEND:

- PROPERTY LINE
- RIGHT OF WAY
- MEASURING POINT ELEVATION

