

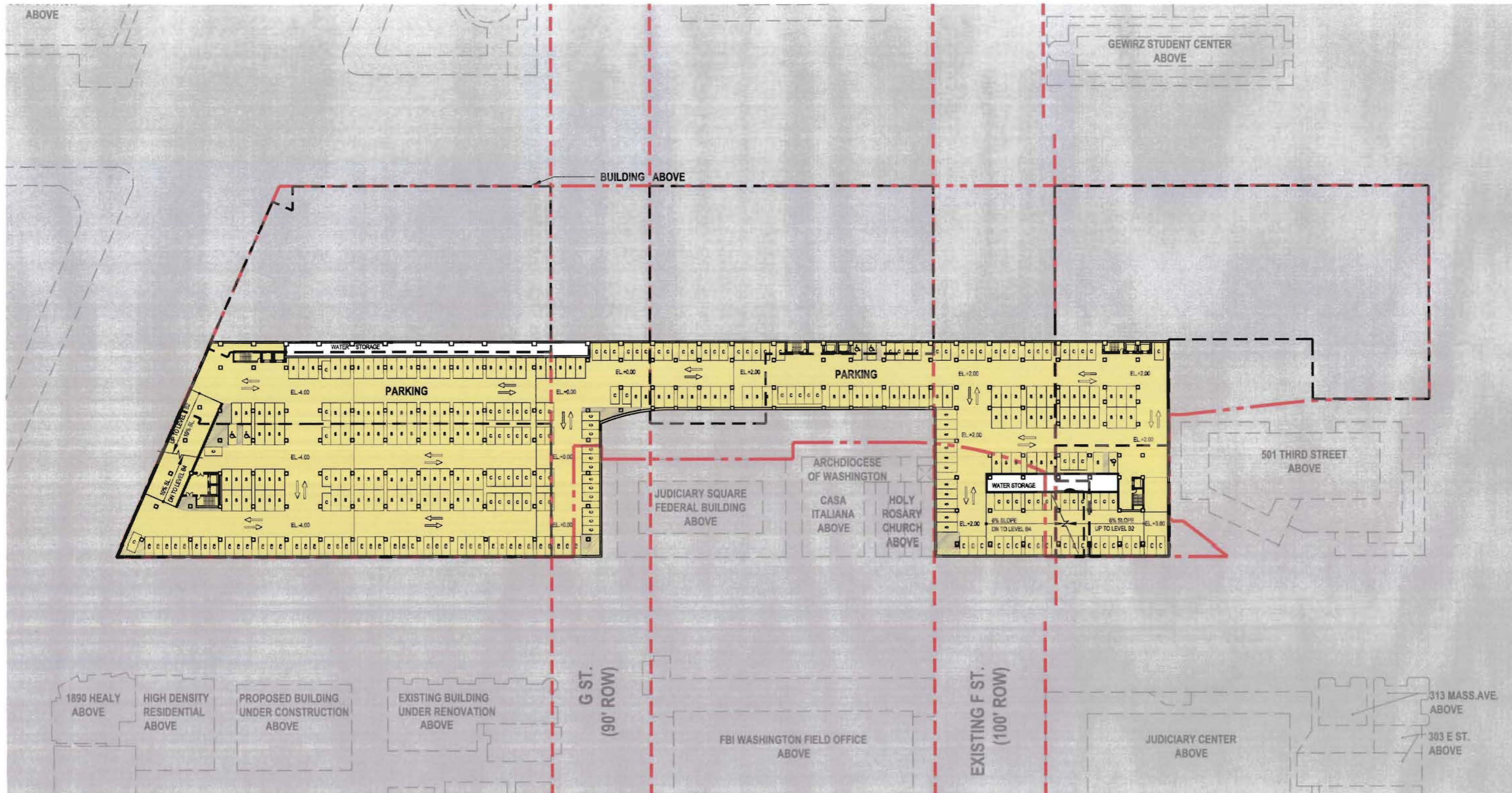
NOTE:

1. The interior layouts shown on the building plans are schematic. Changes to the layouts, not affecting the exterior envelope or the square footage distribution, may occur.
2. Drive aisles will be 20' min. in areas described in DCMR 11, 2117.5



LEGEND:

- PROPERTY LINE
- RIGHT OF WAY



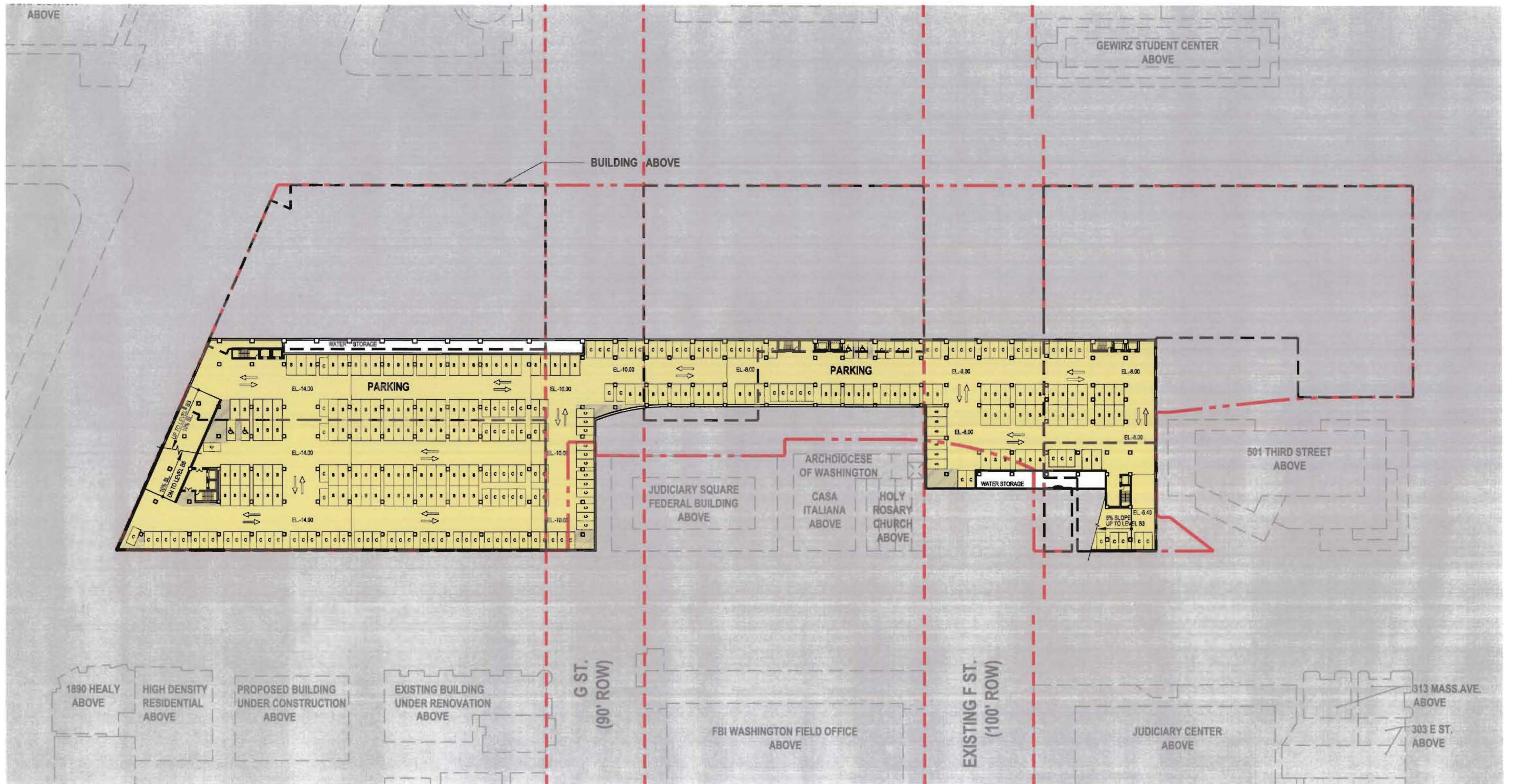
NOTE:

1. The interior layouts shown on the building plans are schematic. Changes to the layouts, not affecting the exterior envelope or the square footage distribution, may occur.
2. Drive aisles will be 20' min. in areas described in DCMR 11, 2117.5



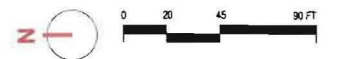
LEGEND:

- PROPERTY LINE
- RIGHT OF WAY



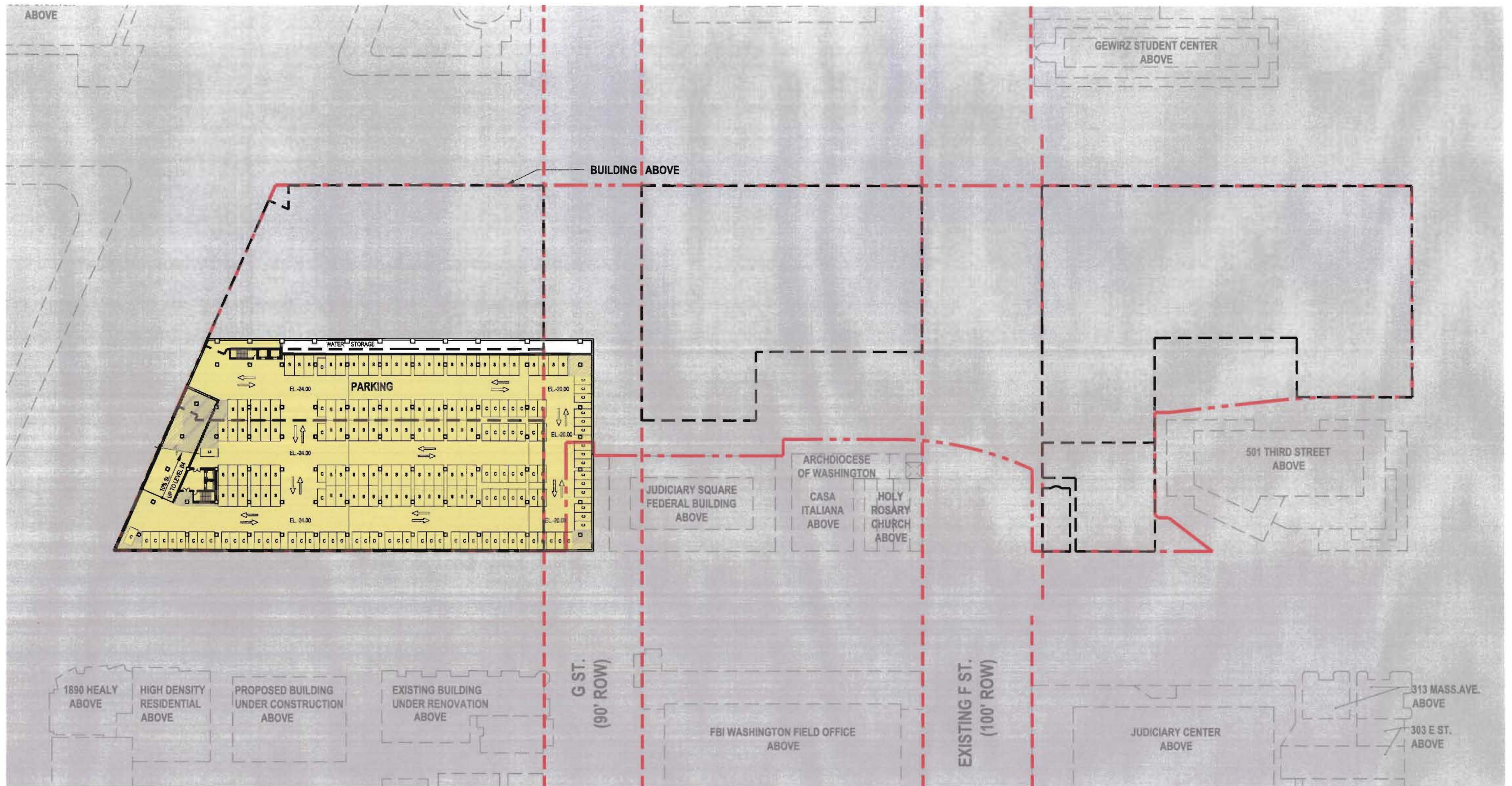
NOTE:

1. The interior layouts shown on the building plans are schematic. Changes to the layouts, not affecting the exterior envelope or the square footage distribution, may occur.
2. Drive aisles will be 20' min. in areas described in DCMR 11, 2117.5



LEGEND:

- - - - - PROPERTY LINE
- - - - - RIGHT OF WAY



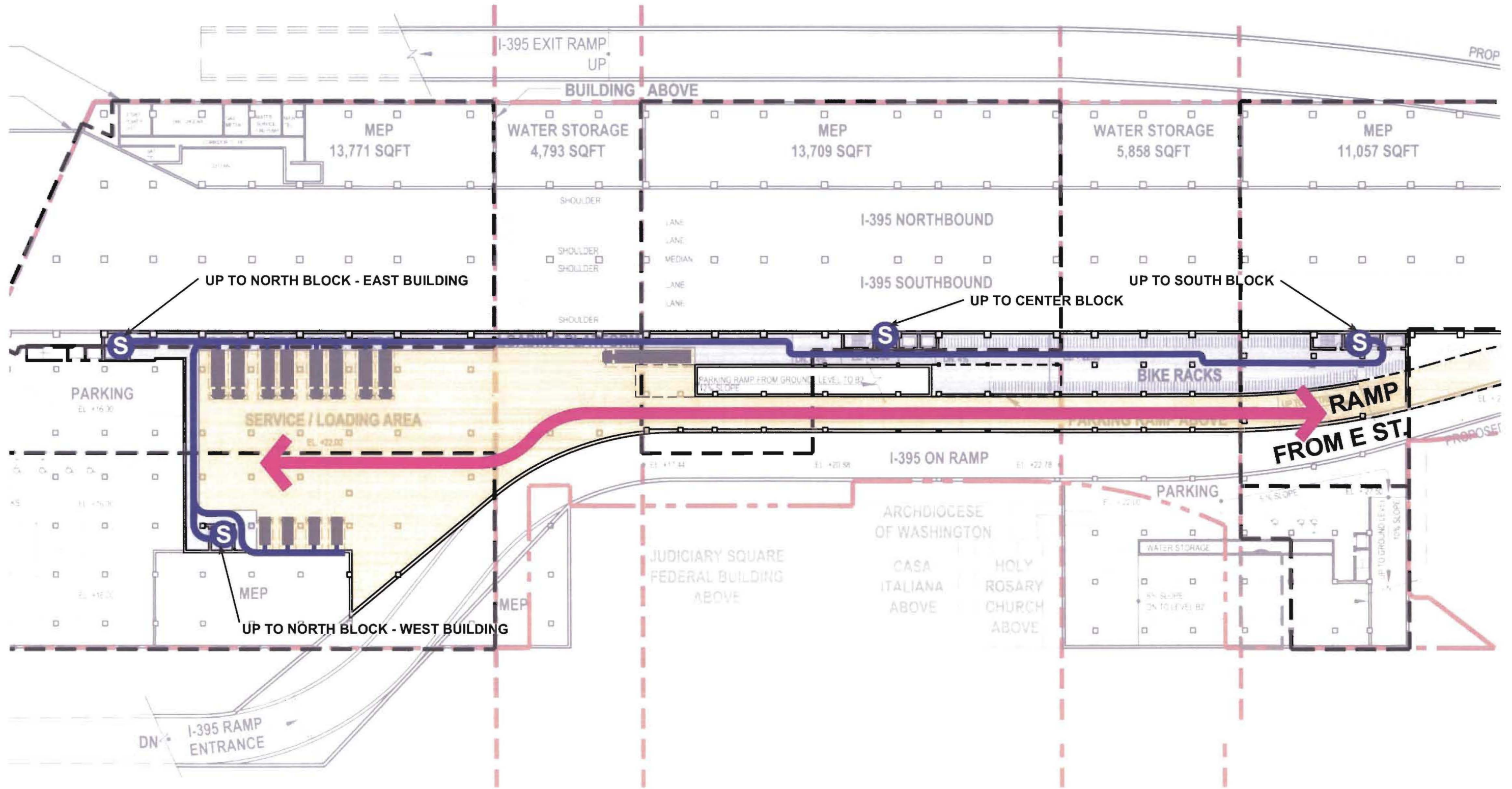
NOTE:

1. The interior layouts shown on the building plans are schematic. Changes to the layouts, not affecting the exterior envelope or the square footage distribution, may occur.
2. Drive aisles will be 20' min. in areas described in DCMR 11, 2117.5



LEGEND:

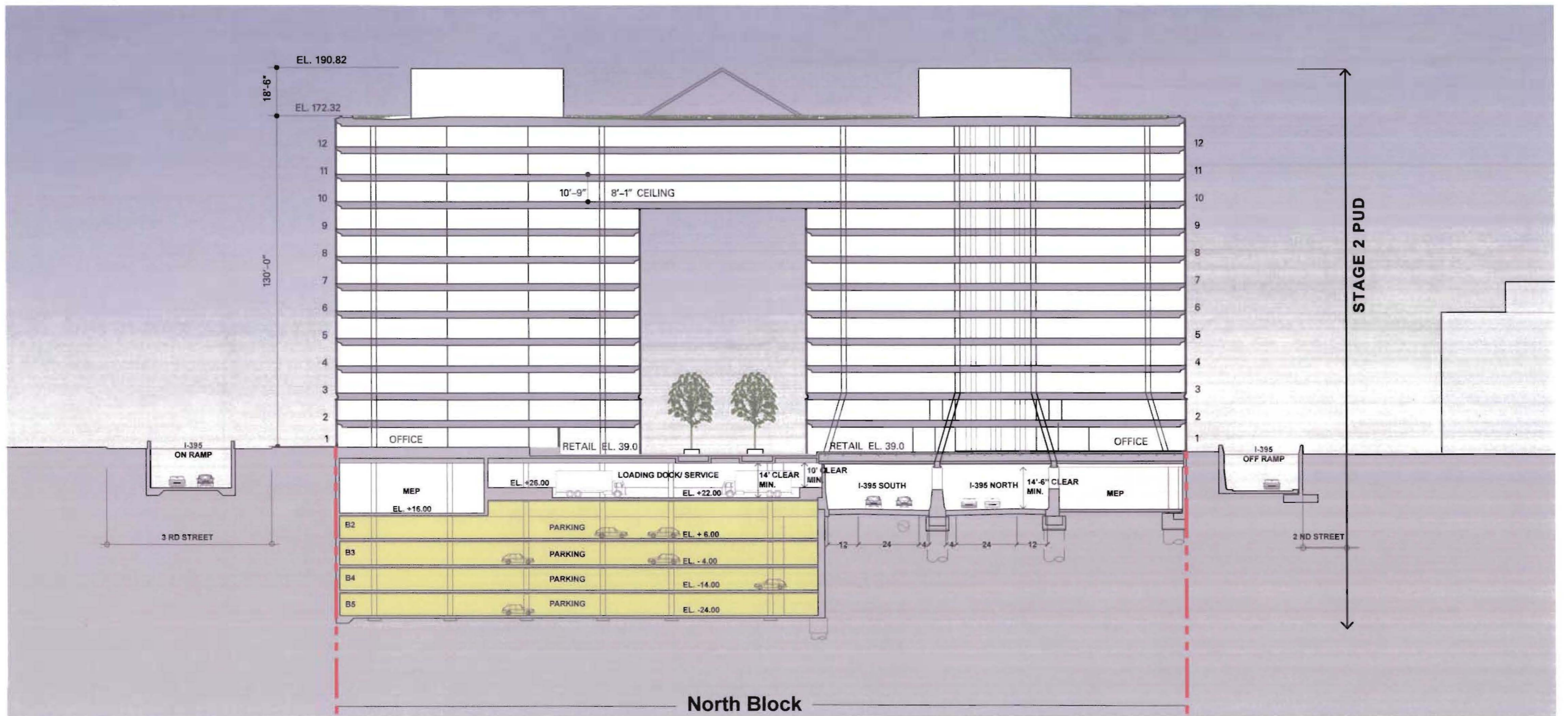
- — — — — PROPERTY LINE
- - - - - RIGHT OF WAY



NOTE:
 The interior layouts shown on the building plans are schematic.
 Changes to the layouts, not affecting the exterior envelope or the square footage distribution, may occur.

LEGEND:

- PEDESTRIAN SERVICE AREA
- PEDESTRIAN SERVICE CORR.
- S SERVICE ELEVATOR
- ↔ VEHICULAR LOADING AREA
- ↔ SERVICE VEHICULAR MAIN ACCESS

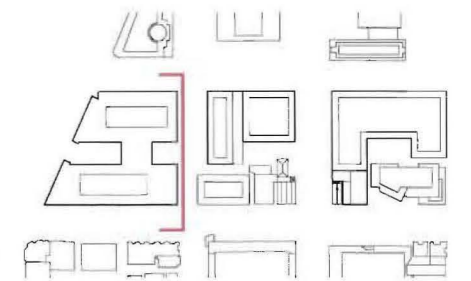


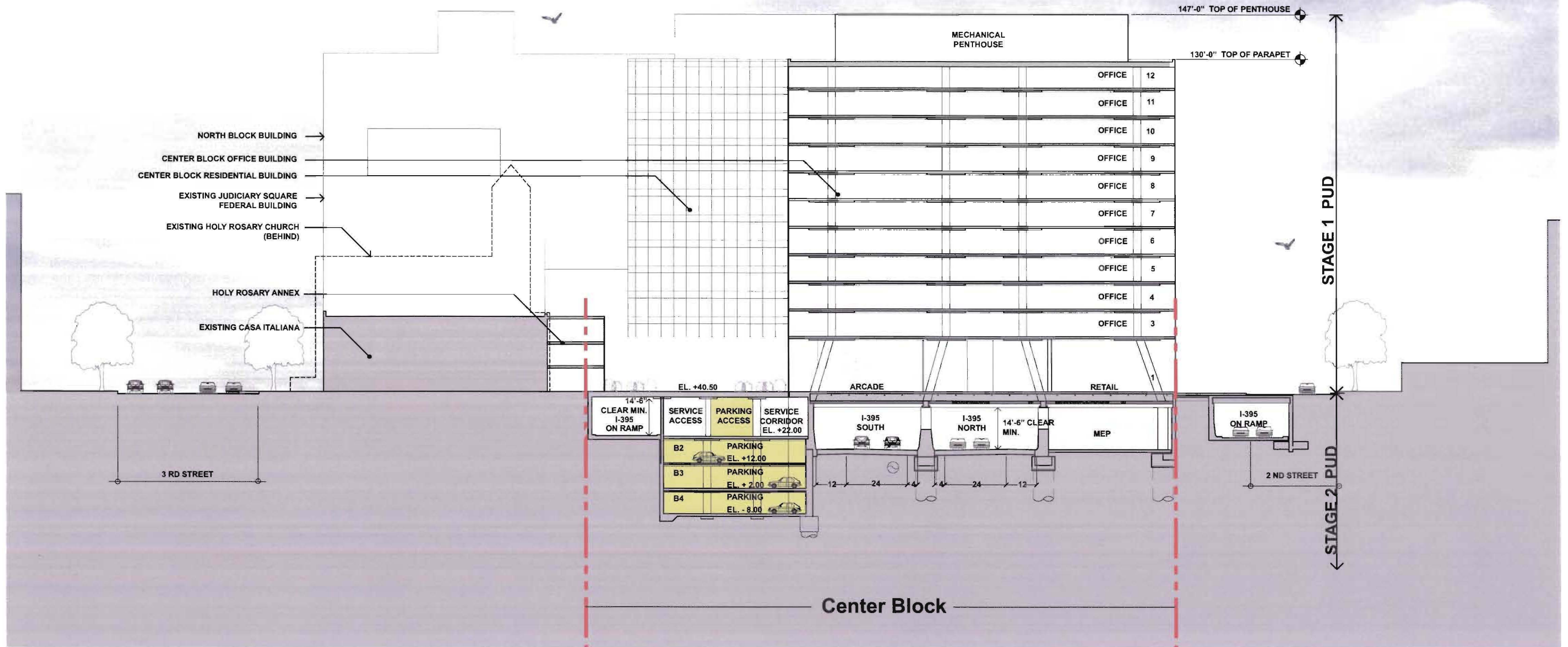
NOTE:

1. North Block building heights are taken from the measuring point of 42.32'. Refer to sheet 2.1 "Building Heights, Area and Use Diagram" for measuring point location.
2. Refer to sheet 1.18 "Extent of First Stage and Consolidated PUD Submission" for scope of PUD.

LEGEND:

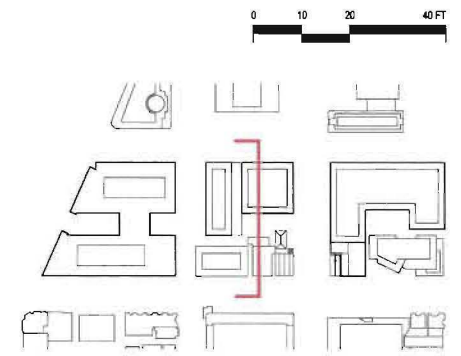
- PROPERTY LINE
- ⊙ MEASURING POINT

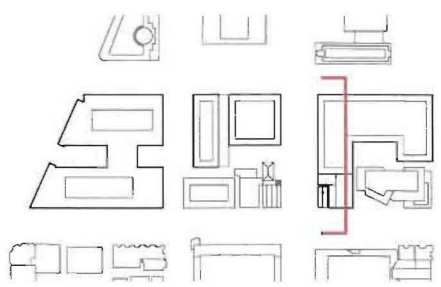
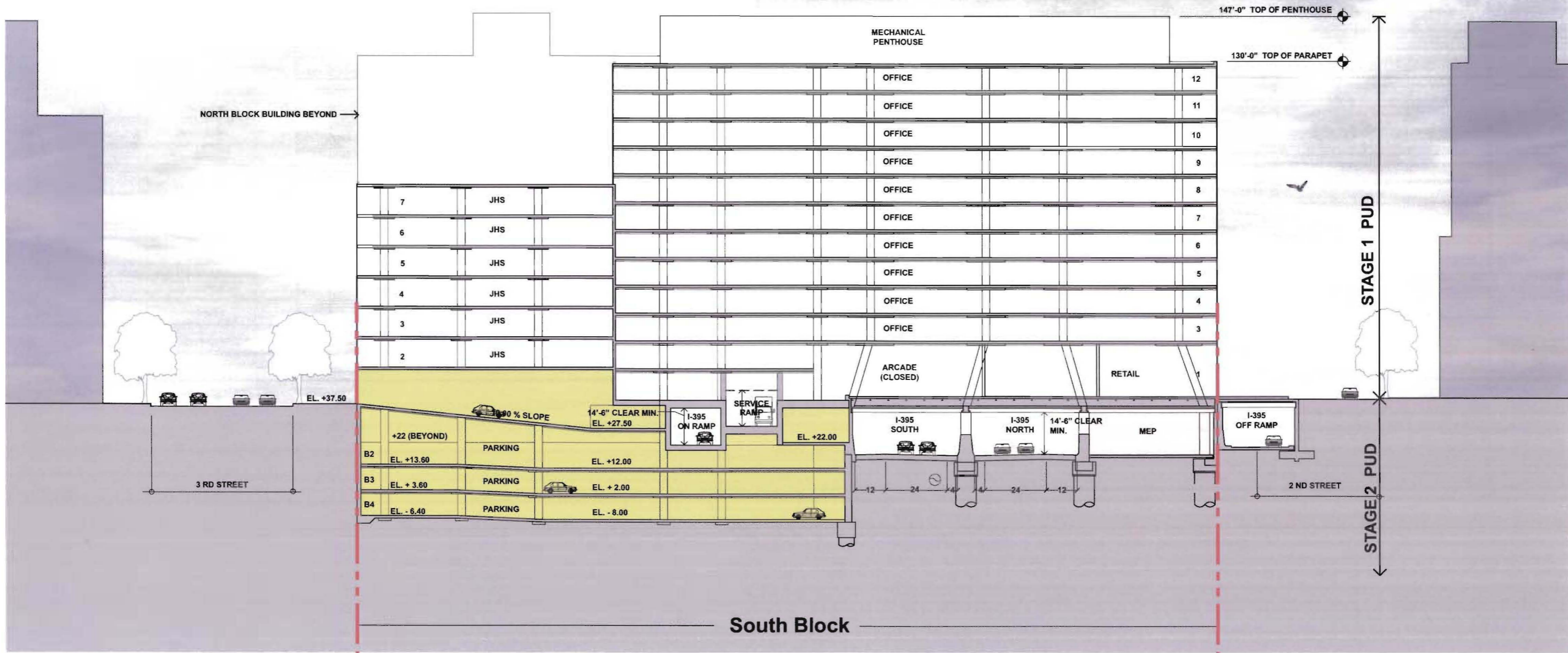




NOTE:
 1. Building heights for the Center Block are taken from the measuring point of 40.50'.
 Refer to sheet 2.1 "Building Heights, Area and Use Diagram" for measuring point location.
 2. Refer to sheet 1.18 "Extent of First Stage and Consolidated PUD Submission" for scope of PUD.

LEGEND:
 - - - - - PROPERTY LINE
 ● MEASURING POINT





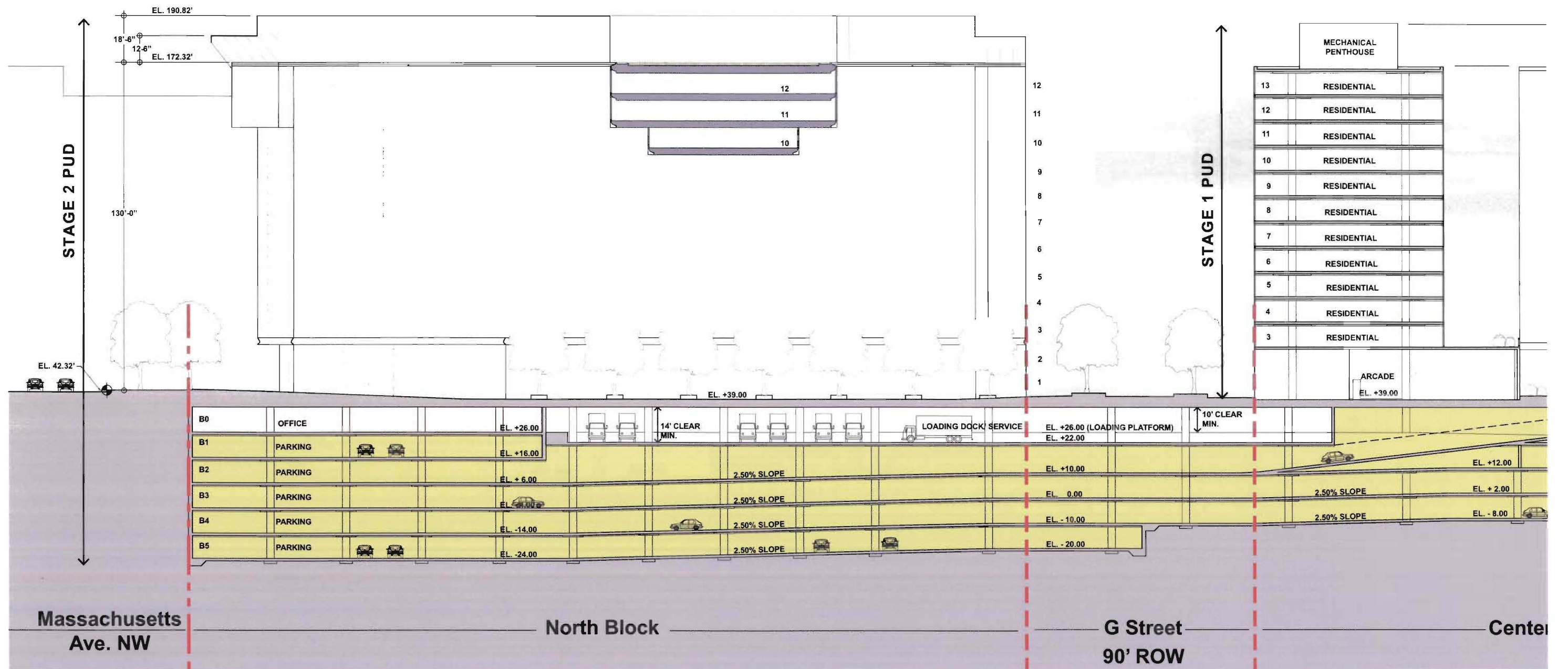
NOTE:

- Building heights for the Center Block are taken from the measuring point of 40.50'. Refer to sheet 2.1 "Building Heights, Area and Use Diagram" for measuring point location.
- Refer to sheet 1.18 "Extent of First Stage and Consolidated PUD Submission" for scope of PUD.

LEGEND:

--- PROPERTY LINE

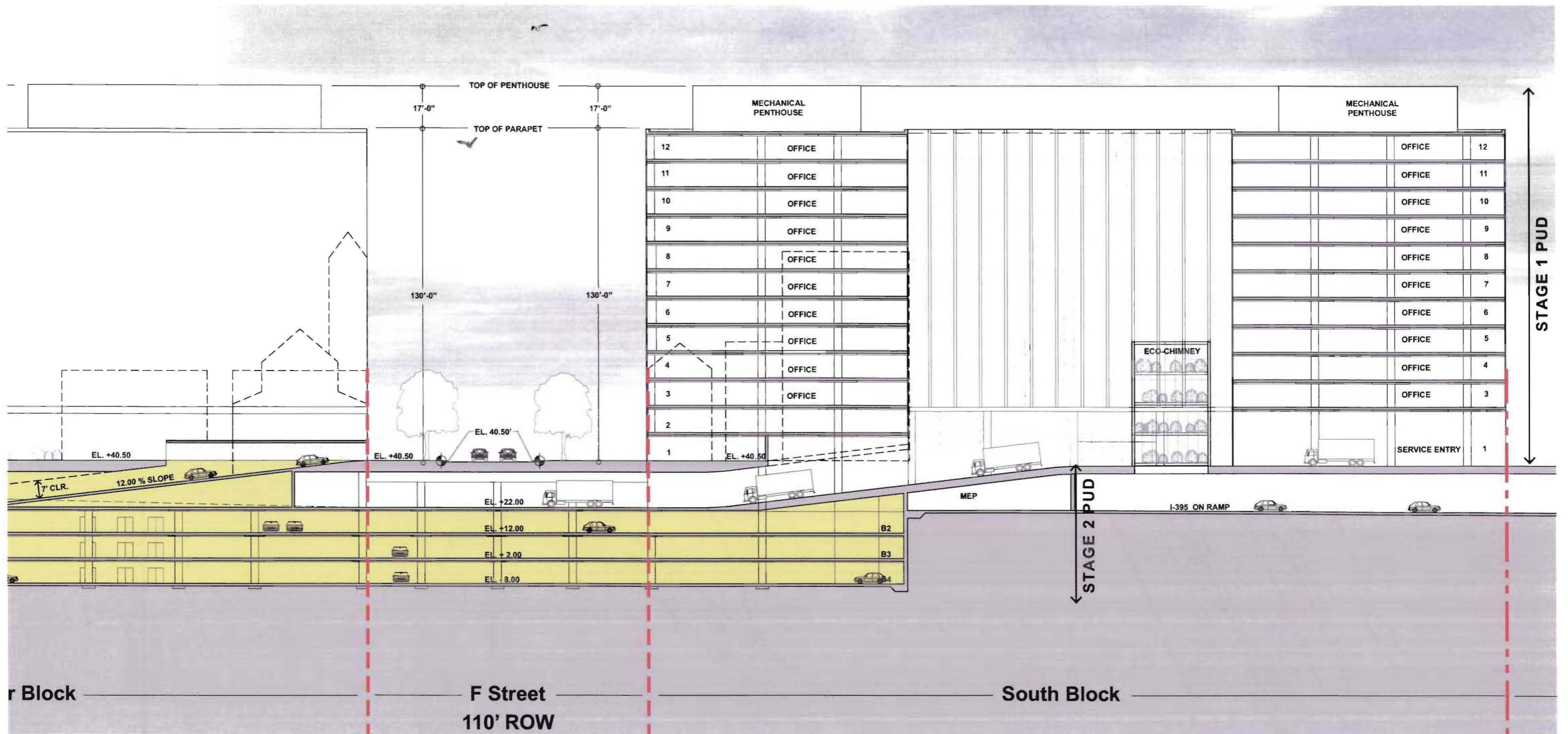
⊙ MEASURING POINT



NOTE:
 1. North Block building heights are taken from the measuring point of 42.32'. Refer to sheet 2.1 "Building Heights, Area and Use Diagram" for measuring point location.
 2. Refer to sheet 1.18 "Extent of First Stage and Consolidated PUD Submission" for scope of PUD.

LEGEND:

- PROPERTY LINE
- RIGHT OF WAY
- ⊙ MEASURING POINT ELEVATION



NOTE:
 1. Building heights for the Center and South Block are taken from the measuring point of 40.50'. Refer to sheet 2.1 "Building Heights, Area and Use Diagram" for measuring point location.
 2. Refer to sheet 1.18 "Extent of First Stage and Consolidated PUD Submission" for scope of PUD.

LEGEND:

- PROPERTY LINE
- RIGHT OF WAY
- MEASURING POINT ELEVATION

