



Return to L'Enfant

Massachusetts Avenue & Second Street NW, Washington DC 20001

A PLANNED UNIT DEVELOPMENT

FIRST-STAGE PUD APPLICATION

December 31, 2008

EXHIBIT "A" TO PUD SUBMISSION

OWNER

**DISTRICT OF COLUMBIA
OFFICE OF THE DEPUTY MAYOR
FOR PLANNING AND ECONOMIC DEVELOPMENT**

APPLICANT

**CENTER PLACE HOLDINGS LLC
c/o LOUIS DREYFUS PROPERTY GROUP**

LAND USE COUNSEL

HOLLAND & KNIGHT LLP

MASTER PLANNER

SKIDMORE, OWINGS & MERRILL LLP

ARCHITECT

KEVIN ROCHE JOHN DINKELOO AND ASSOCIATES LLC

LANDSCAPE ARCHITECT

EDAW INC

TRAFFIC AND TRANSPORTATION CONSULTANT

WELLS + ASSOCIATES INC

INFRASTRUCTURE ENGINEER

DMJM HARRIS | AECOM

CIVIL ENGINEER AND SURVEYOR

WILES MENSCH CORPORATION

STRUCTURAL ENGINEER

LESLIE E. ROBERTSON ASSOCIATES RLLP

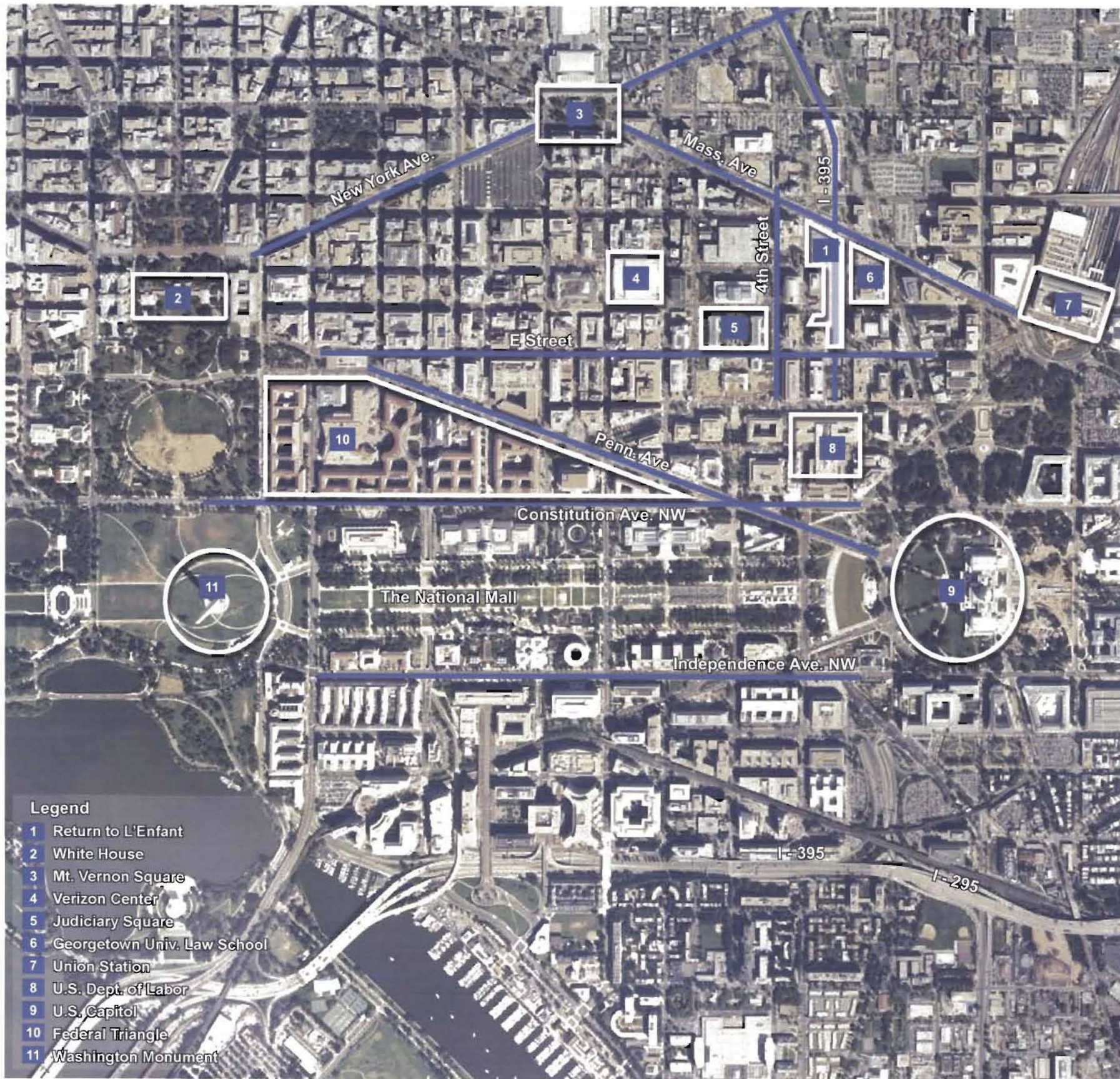
SUSTAINABILITY CONSULTANT

TERRAPIN BRIGHT GREEN LLC

ECONOMIC IMPACT CONSULTANT

BOLAN SMART ASSOCIATES

ZONING COMMISSION
District of Columbia
CASE NO.08-34
EXHIBIT NO.5A1



DRAWING INDEX

FILING REQUIREMENT
DCMR 11, Section:

NO.	TITLE:	FILING REQUIREMENT
----	Cover Sheet	
1.1	Aerial Photograph and Drawing Index	2406.11 (e)(7)
1.2	Context Aerial Photograph - View from North	2406.11 (e)(7)
1.3	Context Aerial Photograph - View from South	2406.11 (e)(7)
1.4	Context Aerial Photographs - View from East & West	2406.11 (e)(7)
1.5	L'Enfant Plan	2406.11 (e)(7)
1.6	Survey Year 1939	2406.11 (e)(7)
1.7	DC Comprehensive Plan - Future Land Use	2406.11 (e)(7)
1.8	F Street from White House to Union Station	2406.11 (e)(7)
1.9	Context and Land Use	2406.11 (e)(7)
1.10	Existing Access - 1 of 2	2406.11 (e)(7)
1.11	Existing Access - 2 of 2	2406.11 (e)(7)
1.12	Existing Site Plan	2406.11 (e)(7)
1.13	Site Constraints and Issues	2406.11 (e)(7)
1.14	Site Area	2406.11 (e)(7)
1.15	Illustrative Site Plan	2406.11 (e)(7)
1.16	Zoning Map	2406.11 (b)(d)(e)
1.17	Development Data	2406.11 (b)(d)(e)
1.18	Extent of First Stage and Consolidated PUD Submission	2406.11 (e)(7)
1.19	Model Photographs - View from Southwest	2406.11 (e)(7)
1.20	Model Photographs - View from Northeast	2406.11 (e)(7)
1.21	Model Photographs - View from North	2406.11 (e)(7)
1.22	Model Photographs - View from Northwest	2406.11 (e)(7)
1.23	Model Photographs - View from Southeast	2406.11 (e)(7)
1.24	Model Photographs - View below the Platform, from East	2406.11 (e)(7)
2.1	Building Height, Area and Use Diagram	2406.11 (d)
2.2	Context Circulation Plan	2406.11 (e)(4)
2.3	Site Circulation Plan	2406.11 (e)(4)
2.4	Retail Diagram	2406.11 (3)(7)
2.5	Open Space Diagram	2406.11 (d)
2.6	LEED Score Card	2406.11 (e)(7)
2.7	Sustainability Diagram	2406.11 (e)(7)
3.1	B0 Level - Concourse, Office Plan	2406.11 (d)
3.2	B1 Level Parking Plan - Parking, Service, Highway Plan	2406.11 (d)
3.3	B2 Level Parking Plan	2406.11 (d)
3.4	B3 Level Parking Plan	2406.11 (d)
3.5	B4 Level Parking Plan	2406.11 (d)
3.6	B5 Level Parking Plan	2406.11 (d)
3.7	Service Corridor Circulation Diagram	2406.11 (e)(4)(7)
4.1	Site Section - North Block - Through Skylight	2406.11 (d)
4.2	Site Section - North Block - Through G St. Garden	2406.11 (d)
4.3	Site Section - Center Block	2406.11 (d)
4.4	Site Section - South Block	2406.11 (d)
4.5	Site Section - Longitudinal Section - 1 of 2	2406.11 (d)
4.6	Site Section - Longitudinal Section - 2 of 2	2406.11 (d)
5.1	Civil Survey - 1 of 2	2406.11 (d)(e5)
5.2	Civil Survey - 2 of 2	2406.11 (d)(e5)
5.3	Water & Sewer Load Calculation - 1 of 5	2406.11 (e)(6)
5.4	Water & Sewer Load Calculation - 2 of 5	2406.11 (e)(6)
5.5	Water & Sewer Load Calculation - 3 of 5	2406.11 (e)(6)
5.6	Water & Sewer Load Calculation - 4 of 5	2406.11 (e)(6)
5.7	Water & Sewer Load Calculation - 5 of 5	2406.11 (e)(6)
5.8	Stormwater Management Calculation	2406.11 (e)(6)



Photo by Anita Lambert, February 2008

Return to L'Enfant

1.2 First-Stage PUD Application

December 31, 2008

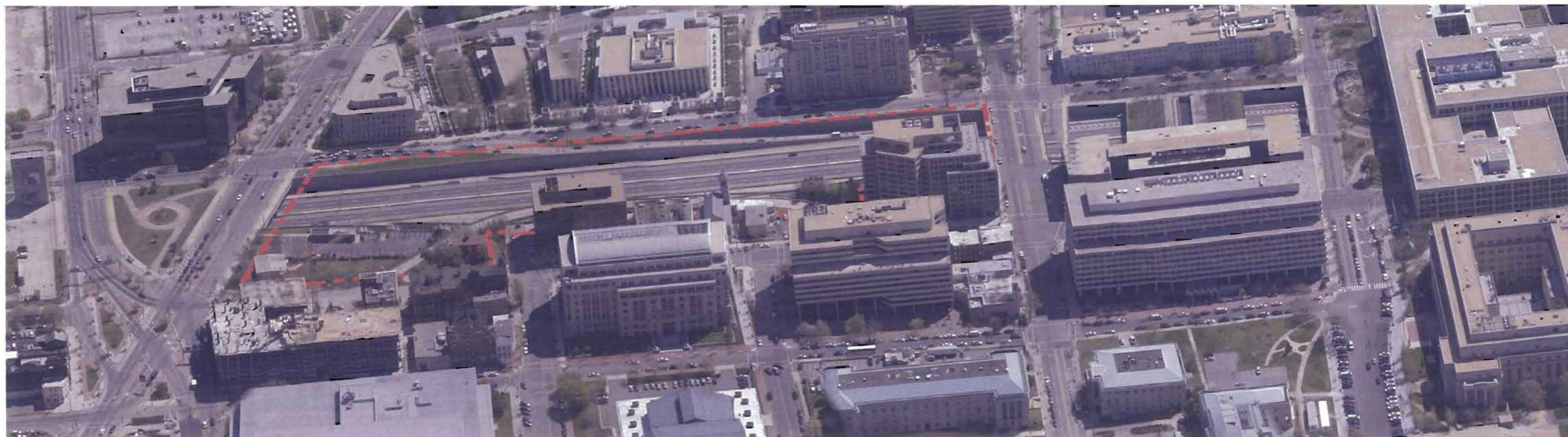
Context Aerial Photograph - View from North

SOM Louis Dreyfus Property Group





VIEW FROM EAST



VIEW FROM WEST

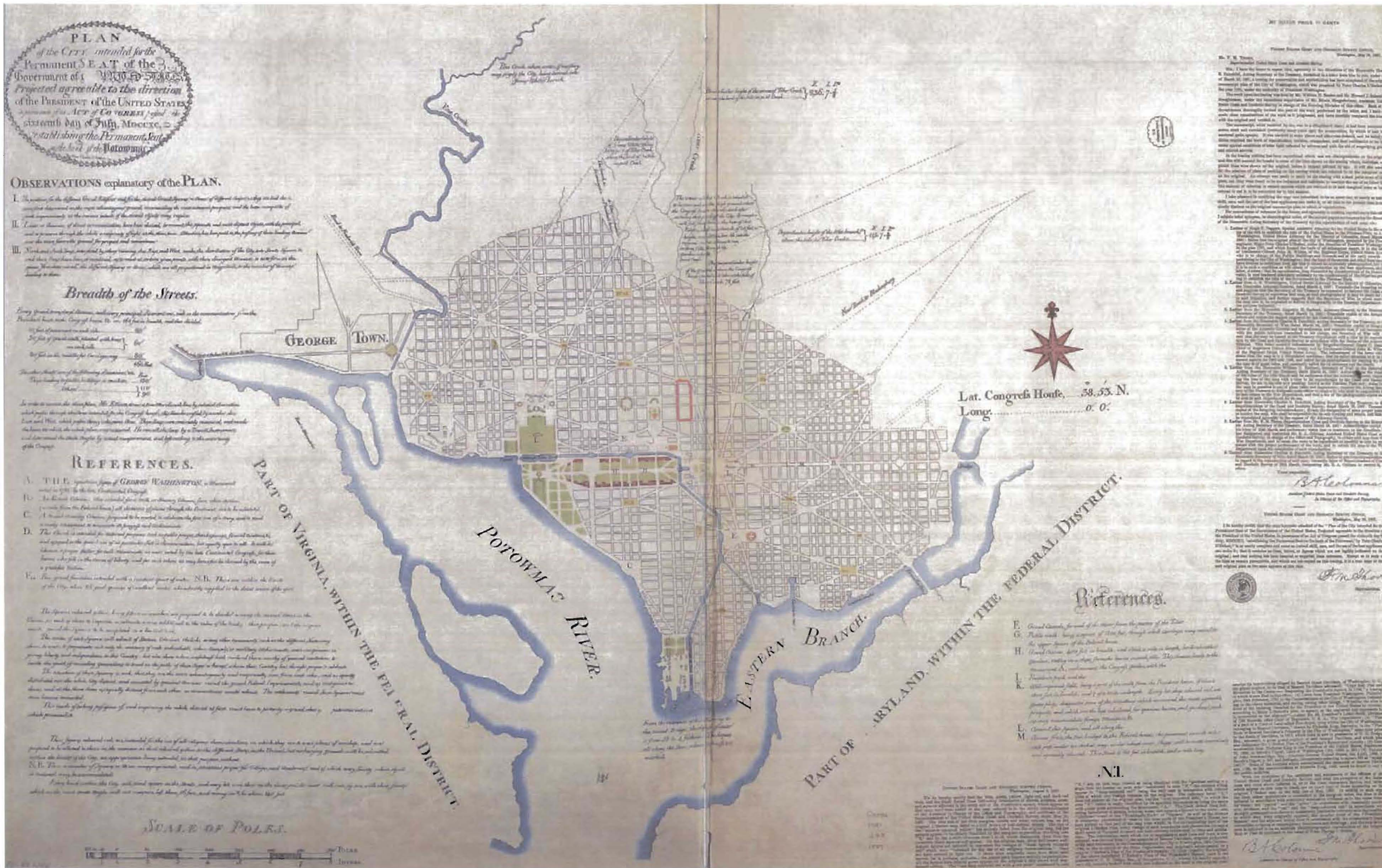
Return to L'Enfant

1.4 First-Stage PUD Application

December 31, 2008

Context Aerial Photographs

SOM Louis Dreyfus Property Group



**L'ENFANT PLAN FACSIMILE:
PRESERVING THE IMAGE
The U.S. Coast and Geodetic
Survey Copy**

TITLE: Plan of the City intended for the Permanent Seat of the Government of the United States.

DATE DEPICTED: 1797 Projection

DATE ISSUED: 1887

CARTOGRAPHER:

Peter(Pierre) Charles L'Enfant
Facsimile: B.A. Colonna,
F.M. Thorn

PUBLISHER:

U.S. Coast and Geodetic
Survey Office; Julius Bien
& Co., N.Y.

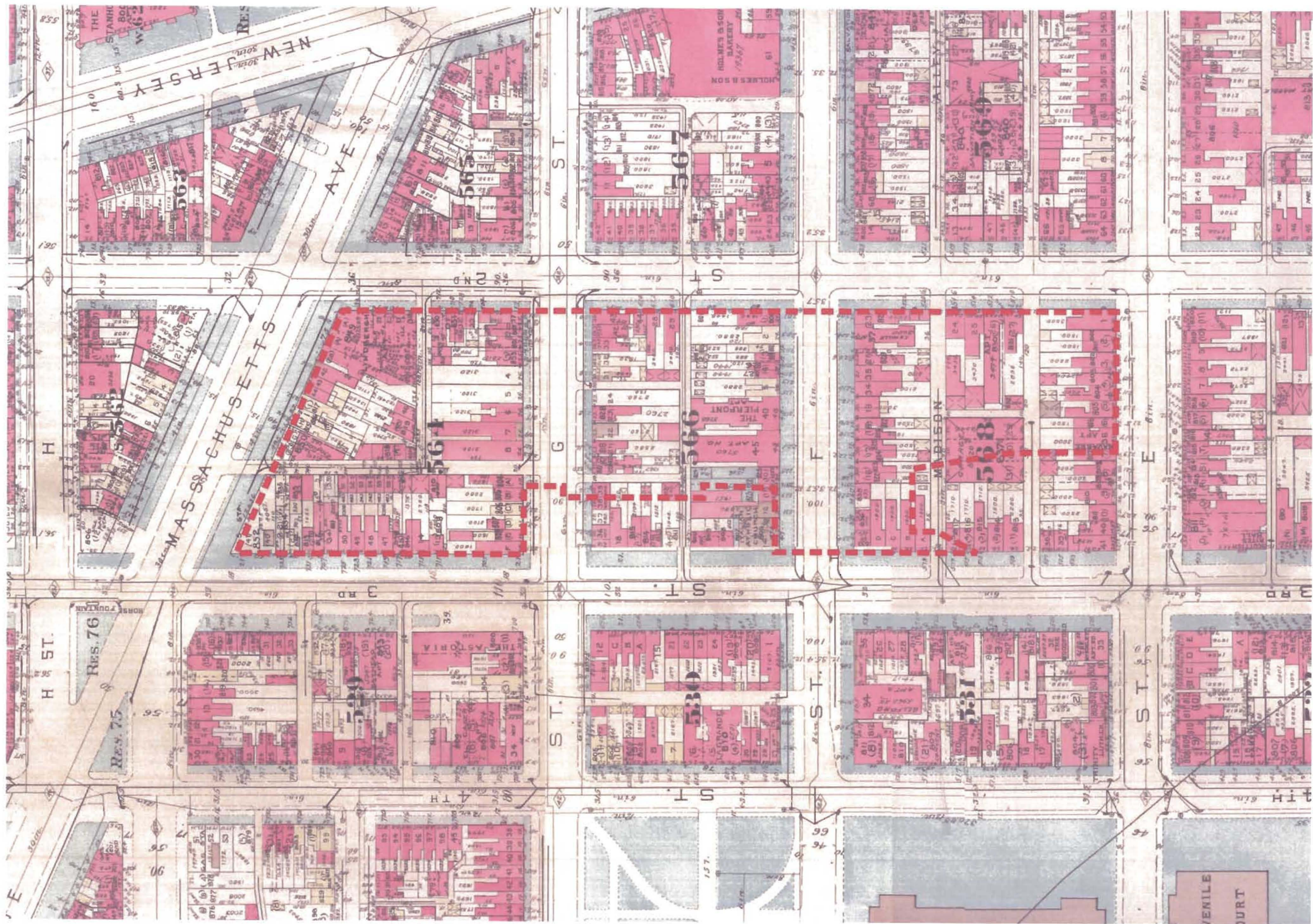
Phot Lithograph, Color,
Scale [ca.1:16,000], 70 x 81 cm,
on sheet 77 x 119 cm,
Library of Congress,
Geography and Map Division,
G3850 1791. L43 1887

SOURCE:

Miller, Iris.
Washington in Maps 1606-2000,
Rizzoli International Publications, 2000
Pages: 34 ~ 39

LEGEND:



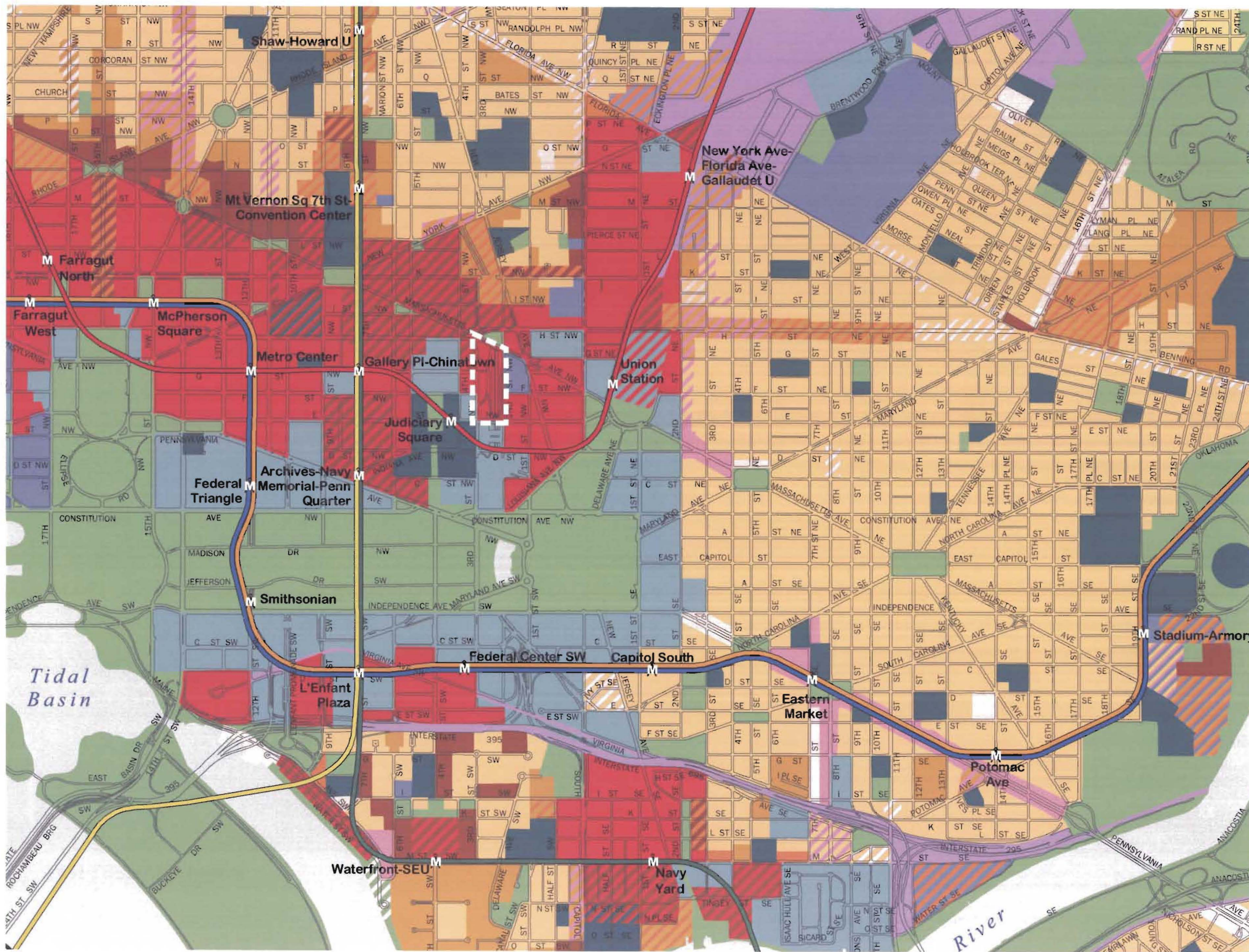


SOURCE:
G.W^m Baist's Sons,
Baist's Real Estate
Atlas of Surveys of
Washington,
District of Columbia,
Vol. 1, ©1939

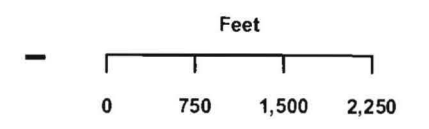
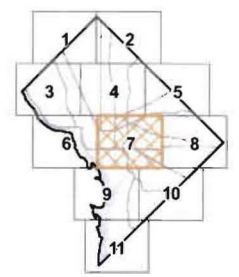
Return to L'Enfant

Survey Year 1939

Comprehensive Plan Future Land Use Map 7



- Low Density Residential
- Moderate Density Residential
- Medium Density Residential
- High Density Residential
- Low Density Commercial
- Moderate Density Commercial
- Medium Density Commercial
- High Density Commercial
- Production, Distribution, and Repair
- Federal
- Local Public Facilities
- Institutional
- Parks, Recreation, and Open Space
- Mixed Land Use
- WATER



*** Government of the
District of Columbia
Adrian M. Fenty, Mayor

Office of Planning ~ June, 2007
This map was created for planning purposes from a variety of sources. It is neither a survey nor a legal document. Information provided by other agencies should be verified with them where appropriate.