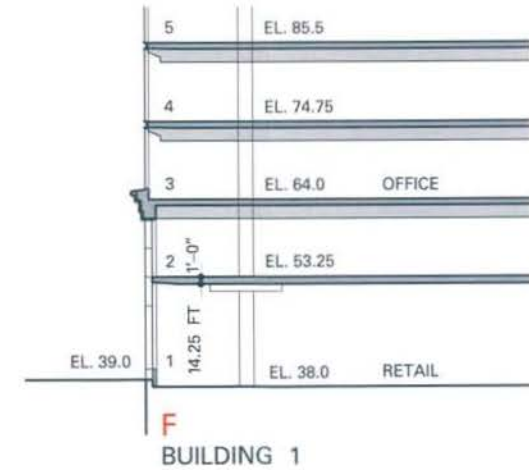
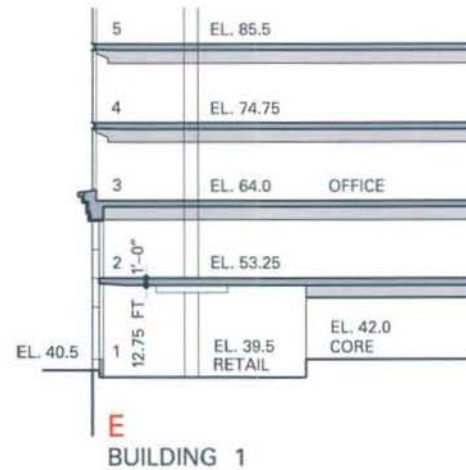
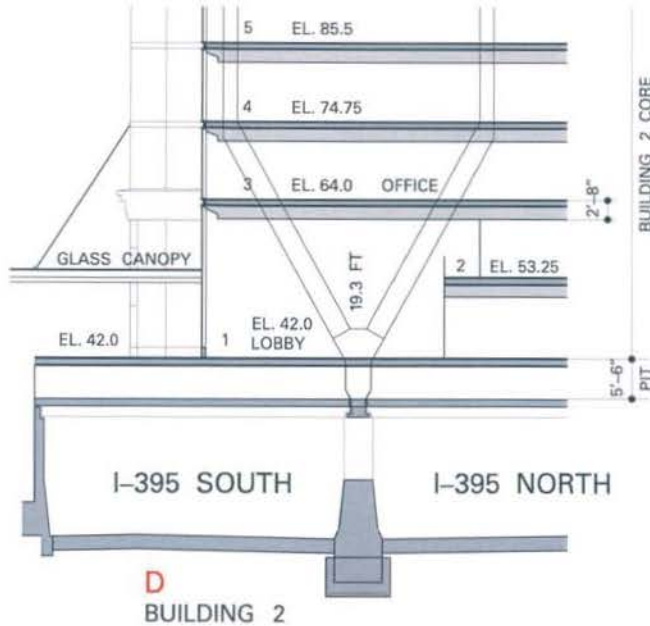
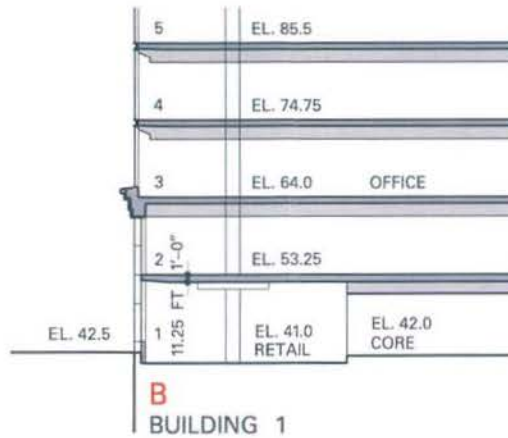
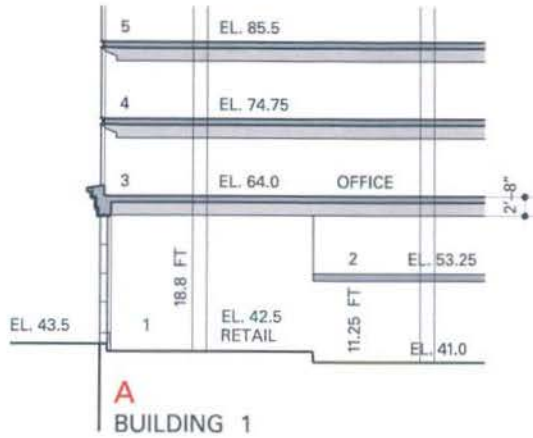


Return to L'Enfant

Consolidated PUD Application Supplemental Post-Hearing Submission - May 9, 2011

1st Floor Plan - Retail Heights - North Block

KEVIN ROCHE JOHN DINKELOO AND ASSOCIATES LLC Louis Dreyfus Property Group 4.3





Return to L'Enfant Perspective View - Pedestrian Way Retail Looking East -North Block

Consolidated PUD Application Supplemental Post-Hearing Submission - April 28, 2011

KEVIN ROCHE JOHN DINKELOO AND ASSOCIATES LLC **Louis Dreyfus Property Group** 2.14.1



Return to L'Enfant

Pedestrian Way Retail/Lobby Looking East - North Block

Consolidated PUD Application

Supplemental Post-Hearing Submittal - April 28, 2011

KEVIN ROCHE JOHN DINKELOO AND ASSOCIATES LLC **Louis Dreyfus Property Group** 2.14.2



Return to L'Enfant

Pedestrian Way Lobby/Retail Looking East - North Block

Consolidated PUD Application Supplemental Post-Hearing Submission - April 28, 2011

KEVIN ROCHE, JOHN DINKELOO AND ASSOCIATES LLC Louis Dreyfus Property Group 2.14.3



Return to L'Enfant Perspective View - Pedestrian Way Retail Looking East - North Block

Consolidated PUD Application Supplemental Post-Hearing Submission - April 28, 2011

KEVIN ROCHE JOHN DINKELOO AND ASSOCIATES LLC Louis Dreyfus Property Group 2.14.4