

08-09

Form 145  
(Revised 04/29/02)

BEFORE THE BOARD OF ZONING ADJUSTMENT  
OF THE DISTRICT OF COLUMBIA

AFFIDAVIT OF POSTING

Notice: [Click Here for Affidavit Form Instructions](#)

RECEIVED  
Case No. 08-09  
D.C. OFFICE OF ZONING  
2008 AUG 22 PM 5:39

DISTRICT OF COLUMBIA, ss:

AUDREY NWANZE

\*, being first duly sworn, do hereby depose and say that:

I, \* AUDREY NWANZE

, posted \* 92 zoning poster(s)

("Notice of Public Hearing") furnished by the Director of the Office of Zoning on private property known as\*

Streets as indicated on attachments

on \* 08/13/2008

at \* 06:30 PM

The zoning posters were placed in plain view of the public on the street frontages as listed on this affidavit below. I have maintained the posting notice by checking the signs every five days, and by posting new notices as necessary.

I have taken, or authorized to be taken, \* 92 photograph(s) of the zoning posters where they have been placed.

The photographs (not to exceed 8 1/2" X 11"), attached hereto, clearly show each zoning poster as seen by the public.

The photographs, are numbered and correspond to the following street frontages:

Photograph No. \*

Street Frontage\*

See Attached

See attached List and map

Signature:

Subscribed and sworn to before me this

22<sup>nd</sup>

day of

August, 2008

Seal

Notary Public, D.C.

GEORGE NWANZE

NOTARY PUBLIC DISTRICT OF COLUMBIA

My commission expires on:

12/14/2009

My Commission Expires December 14, 2009

Jerrily R. Kress, FAIA – Director

District of Columbia Office of Zoning

441 4th Street, N.W. Ste. 210-S, Washington, D.C. 20001

(202) 727-6311 \* (202) 727-6072 fax \* www.dcoz.dc.gov

Print Preview Clear Form

ZONING COMMISSION  
District of Columbia  
CASE NO. 08-09  
EXHIBIT NO. 18

ZONING COMMISSION

District of Columbia

CASE NO. 08-09

EXHIBIT NO. 18



8/22/2008 3:54 PM

**ANC 4C**

This map was created for planning purposes from a variety of sources. It is neither a survey nor a legal document. Information provided by other agencies should be verified with them where appropriate.

**ZONING COMMISSION**  
District of Columbia

CASE NO. 09-09  
EXHIBIT NO. 3

★ ★ ★ Government of the  
 District of Columbia  
 Adrian M. Fenty, Mayor

Office of Planning - April 11, 2008



PHOTO #	STREET FRONTAGE
	<b>SQUARE 2716</b>
1	Colorado Ave. and 14 <sup>th</sup> SW
2	Colorado Ave. mid block between Jefferson and Ingraham E
3	Colorado Ave. and Ingraham NE
4	Ingraham mid block between Colorado Ave. and 14 <sup>th</sup> N
5	14 <sup>th</sup> and Ingraham NW
6	14 <sup>th</sup> mid block between Ingraham and Jefferson W
	<b>SQUARE 2715</b>
7	Ingraham and 14 <sup>th</sup> SW
8	Ingraham mid block between 14 <sup>th</sup> and Colorado Ave. S
9	Colorado Ave. and Ingraham SE
10	Colorado Ave. and Piney Branch Rd. SW
11	Colorado Ave. and Hamilton NE
12	Hamilton and Piney Branch Rd. NW
13	Hamilton and Piney Branch Rd. NE
14	Piney Branch Rd. mid block between Hamilton and Ingraham E
14A	Piney Branch Rd. mid block between Hamilton and Ingraham W
15	Hamilton mid block between Piney Branch Rd. and 14 <sup>th</sup> N
16	14 <sup>th</sup> and Hamilton
17	14 <sup>th</sup> mid block between Hamilton and Ingraham NW
	<b>SQUARE 2714</b>
18	14 <sup>th</sup> and Hamilton SW
19	Hamilton mid block between Piney Branch Rd. and 14 <sup>th</sup> S
20	Hamilton and Piney Branch Rd. SE
21	Hamilton and Piney Branch Rd. SW
22	Hamilton mid block between Piney Branch Rd. and Colorado Ave. S
23	Colorado Ave. and 16 <sup>th</sup> SE
24	16 <sup>th</sup> mid block between Hamilton and Gallatin E
25	16 <sup>th</sup> and Gallatin NE
26	Gallatin mid block between 16 <sup>th</sup> and Piney Branch Rd. N
27	Piney Branch Rd. and Gallatin NW
28	Piney Branch Rd. and Gallatin NE
29	Gallatin mid block between Piney Branch Rd. and 14 <sup>th</sup> N
30	14 <sup>th</sup> and Gallatin NW
31	14 <sup>th</sup> mid block between Gallatin and Hamilton W
32	Piney Branch Rd. mid block between Gallatin and Hamilton W
33	Piney Branch Rd. mid block between Gallatin and Hamilton E
	<b>SQUARE 2712</b>
34	Gallatin and Piney Branch Rd. SW
35	Gallatin mid block between Piney Branch Rd. and Iowa Ave. S
36	Gallatin and Iowa Ave. SE
	<b>SQUARE 2713</b>
37	Gallatin and Iowa Ave. SW

PHOTO #	STREET FRONTAGE
38	Gallatin and 16 <sup>th</sup> SE
39	16 <sup>th</sup> mid block between Gallatin and Farragut E
40	16 <sup>th</sup> and Farragut NE
41	Farragut mid block between 16 <sup>th</sup> and Piney Branch Rd. N
42	Farragut and Piney Branch Rd. NW
43	Iowa Ave. mid block between Farragut and Gallatin W
	<b>SQUARE 2711</b>
44	14 <sup>th</sup> and Gallatin SW
45	Gallatin mid block between 14 <sup>th</sup> and Piney Branch
46	Gallatin and Piney Branch Rd. SE
47	Piney Branch Rd. upper mid block between Gallatin and Emerson E
48	Piney Branch Rd. lower mid block between Gallatin and Emerson E
49	Emerson and Piney Branch Rd. NE
50	Emerson mid block between Piney Branch Rd. and 14 <sup>th</sup> (Iowa) N
51	14 <sup>th</sup> (Iowa) and Emerson NW
52	14 <sup>th</sup> lower mid block between Emerson and Gallatin W
53	14 <sup>th</sup> upper mid block between Emerson and Gallatin W (near Farragut)
	?
	<b>SQUARE 2709</b>
54	Emerson and 14 <sup>th</sup> Street
55	Emerson mid block between 14 <sup>th</sup> and 15 <sup>th</sup>
56	15 <sup>th</sup> and Emerson
57	15 <sup>th</sup> and Delafield Pl.
58	Delafield Pl. mid block between 15 <sup>th</sup> and 14 <sup>th</sup>
59	14 <sup>th</sup> and Delafield
60	14 <sup>th</sup> mid block between Delafield Pl. and Emerson
61	14 <sup>th</sup> and Delafield Pl. SW
62	Delafield Pl. mid block between 14 <sup>th</sup> and 15 <sup>th</sup> S
63	15 <sup>th</sup> and Delafield Pl. SE
64	15 <sup>th</sup> and Decatur NE
65	Decatur mid block N
66	14 <sup>th</sup> and Decatur NW
67	14 <sup>th</sup> mid block between Decatur and Delafield Pl. W
	<b>SQUARE 2708</b>
68	Emerson and 15 <sup>th</sup> SW
69	Piney Branch Rd. and Emerson SE
70	Piney Branch Rd. and Delafield Pl. NE
71	Delafield Pl. and 15 <sup>th</sup> NW
72	Delafield Pl. and 15 <sup>th</sup> SW
73	Delafield Pl. and Piney Branch Rd. SE
74	Piney Branch Rd. and Decatur NE
75	Decatur and 15 <sup>th</sup> NW



PHOTO #	STREET FRONTAGE
	<b>SQUARE 2706</b>
76	Emerson and Piney Branch Rd. SW
77	Emerson mid block between Piney Branch Rd. and 16 <sup>th</sup> S
78	16 <sup>th</sup> and Emerson SE
79	16 <sup>th</sup> mid block between Emerson and Decatur E
80	16 <sup>th</sup> and Decatur NE
81	Decatur and Piney Branch Rd. NW
82	Piney Branch Rd. mid block between Decatur and Emerson (near Delafield) W
	<b>SQUARE 2710</b>
83	Farragut and Piney Branch Rd. SW
84	Farragut mid block between Piney Branch Rd. and 16 <sup>th</sup> S
85	16 <sup>th</sup> and Farragut NE
86	16 <sup>th</sup> mid block between Farragut and Emerson E
87	16 <sup>th</sup> and Emerson NE
88	Emerson mid block between 16 <sup>th</sup> and Piney Branch
89	Emerson and Piney Branch Rd. NW
90	Piney Branch Rd. mid block between Emerson and Farragut W

### LEGEND

All Street Names end in "Street" unless otherwise indicated.

N = North Side of Street

S = South Side of Street

W = West Side of Street

E = East Side of Street

NW = Northwest corner of intersection

NE = Northeast corner of intersection

SW = Southwest corner of intersection

SE = Southeast corner of intersection





# 1





#2





#2





#3





#3





#4





#5





#6



#7





#8





# 9





719





H#10



# 11







#11





#11





# 12





#13





#14





#14A





#15





#16





#16





#17





#17





#18





#18





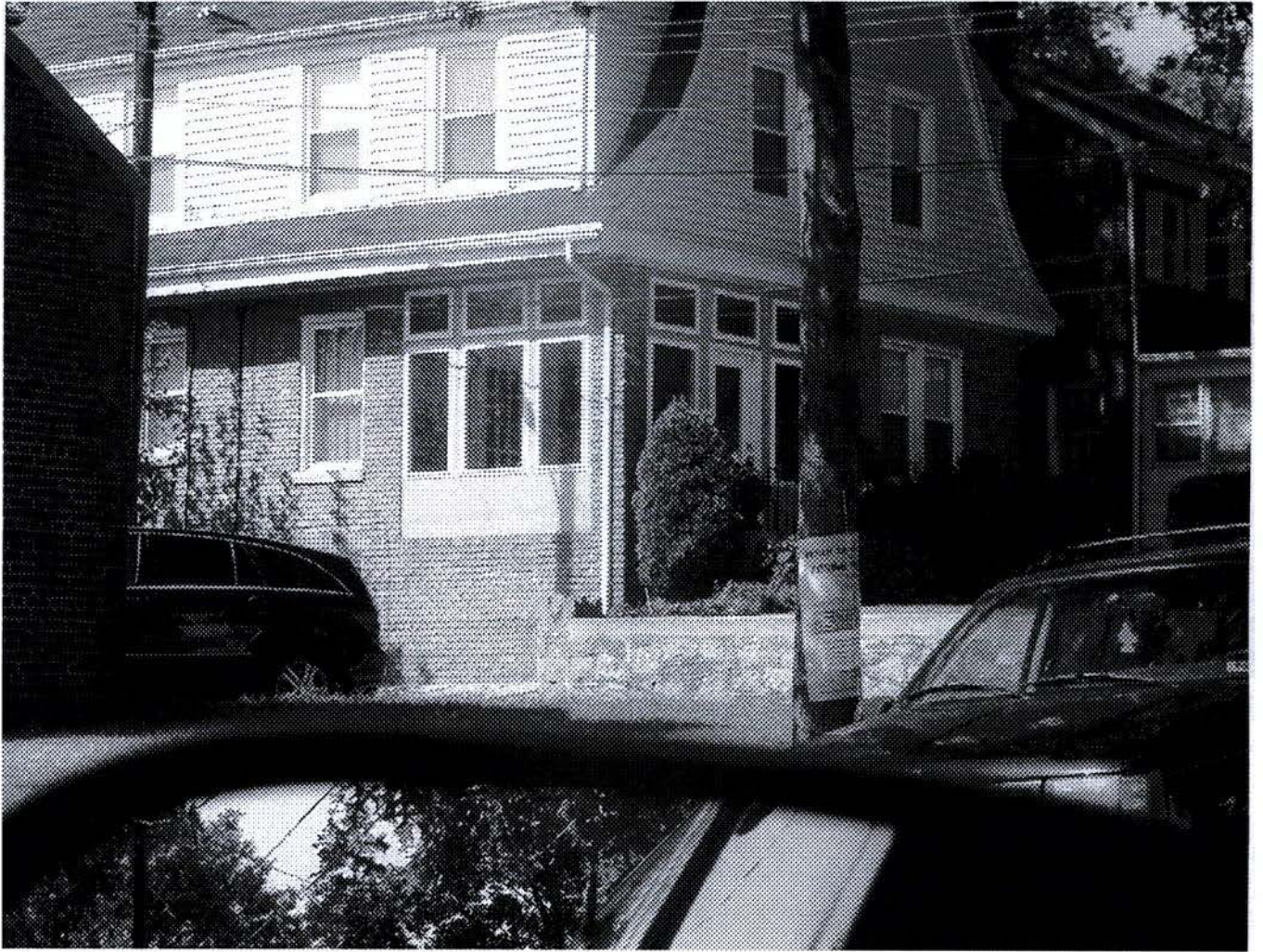
1119





#19





#19





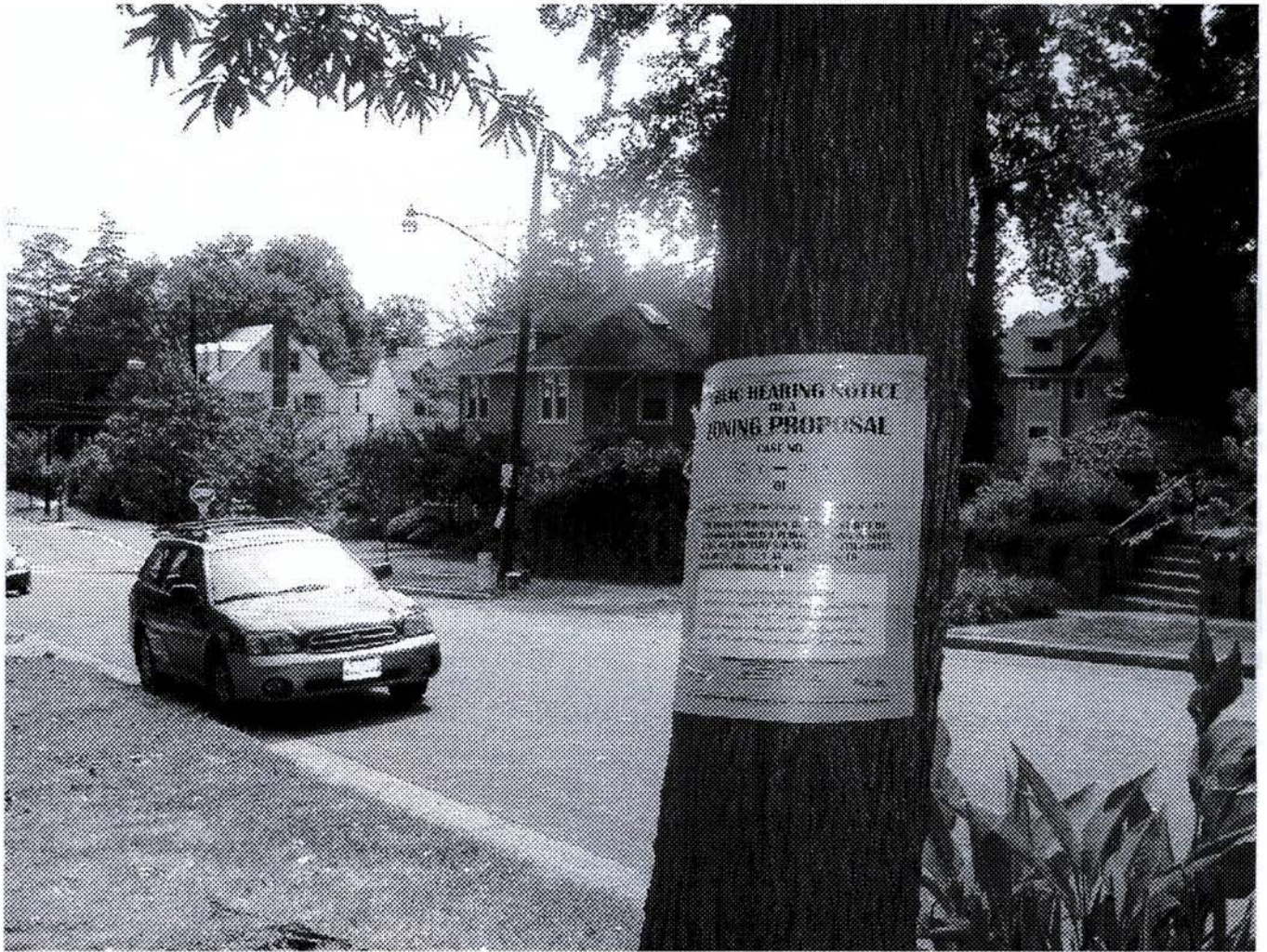
#20





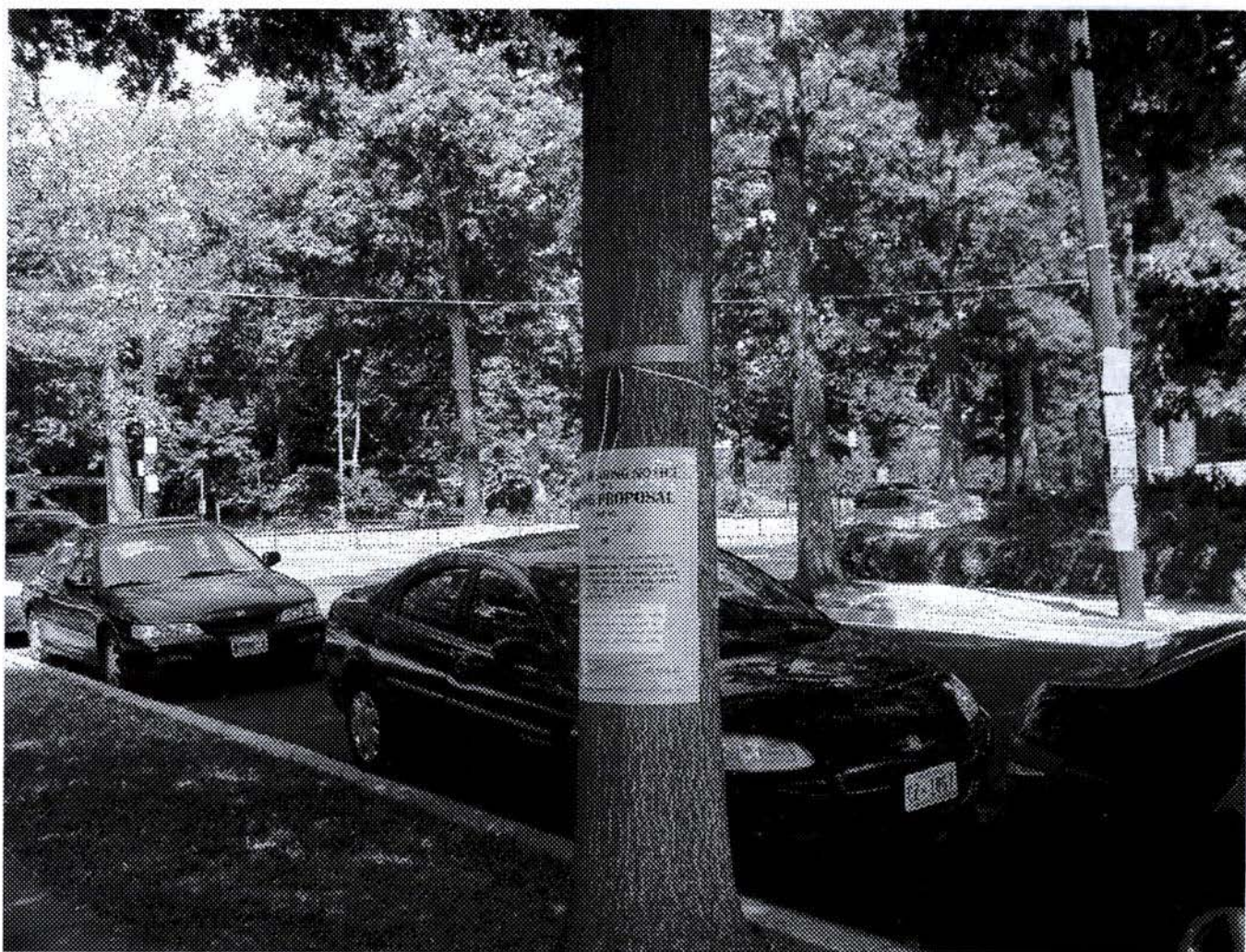
#21





#27





#22