

ZC Case No. 08-07 A

2255 Martin Luther King Jr. Avenue, SE



DEVELOPMENT TEAM
OWNER/DEVELOPER
LAND USE COUNSEL:
TRAFFIC CONSULTANT:
ARCHITECT:
CIVIL/LANDSCAPE ARCHITECT:

FourPoints, LLC
Holland & Knight
Gorove Slade Associates
Grimm + Parker Architects
Bowman Consulting

December 18, 2014

ZONING COMMISSION
District of Columbia
CASE NO.08-07A
EXHIBIT NO.77

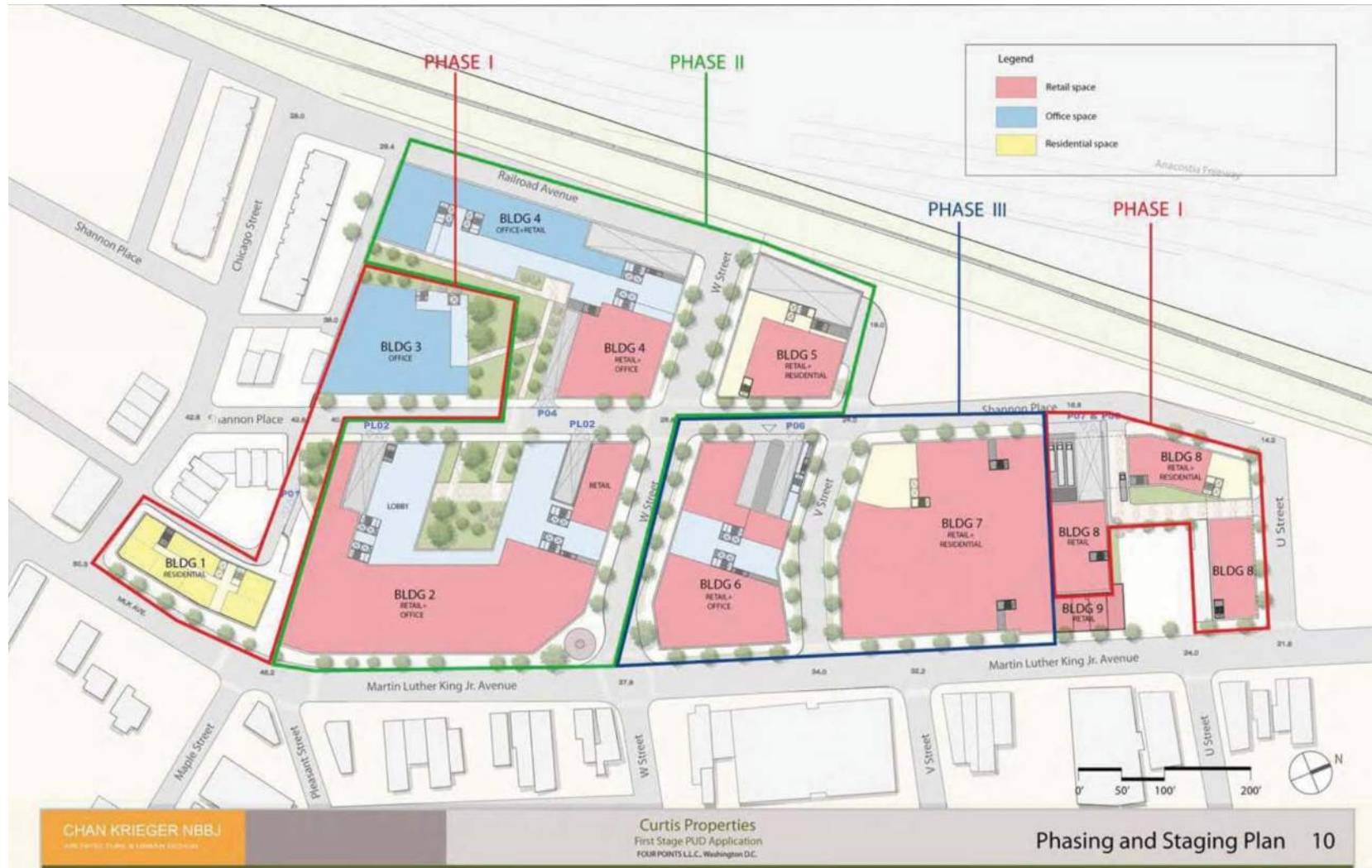


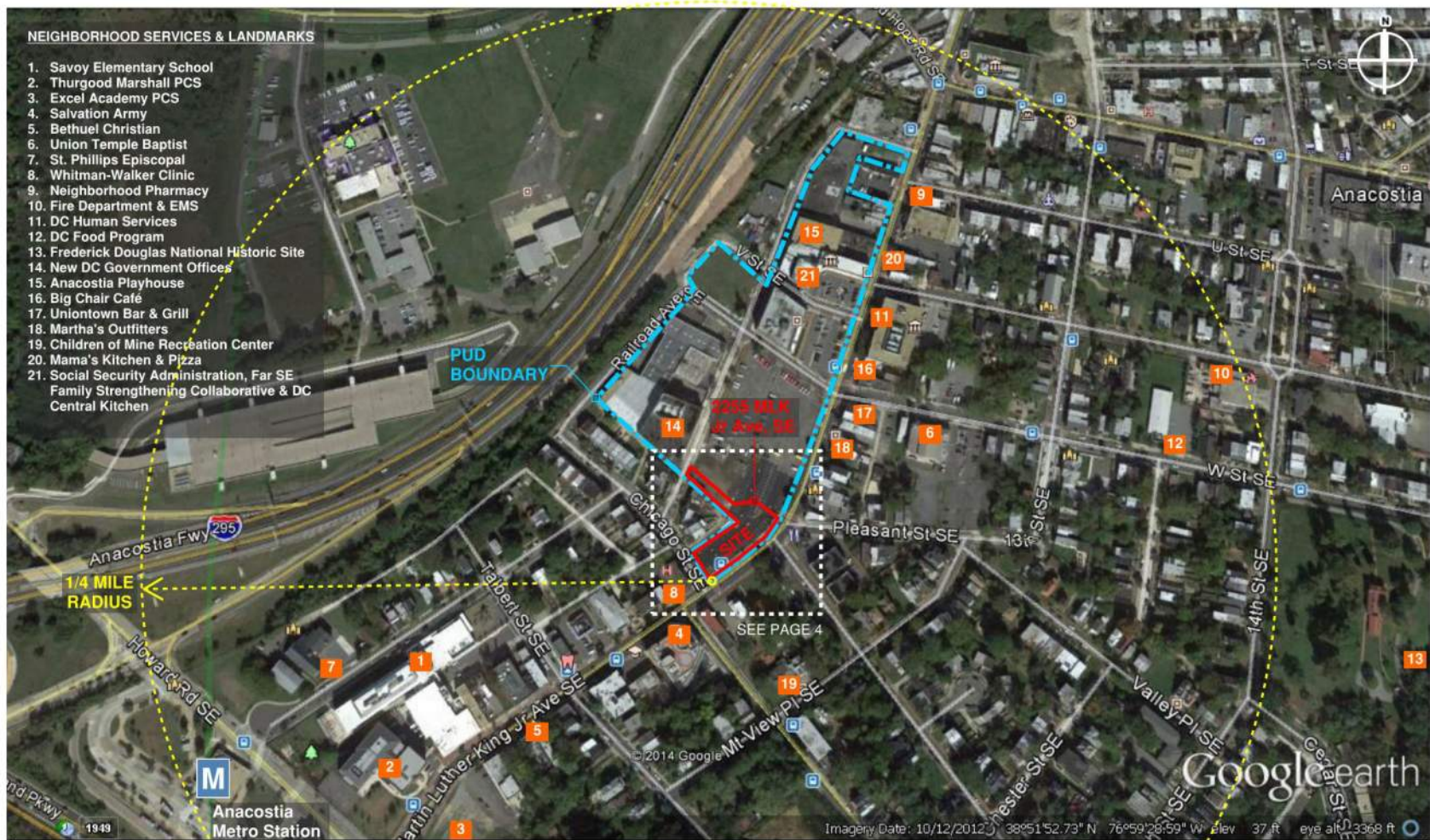
FOUR  POINTS



G+P
GRIMM AND PARKER

APPROVED PUD PHASE 1 PLAN







- VEHICULAR CIRCULATION -
RESIDENT AND VISITOR
- TRUCK CIRCULATION
- PEDESTRIAN ACCESS
- LIVE/WORK ACCESS
- MAIN ENTRY



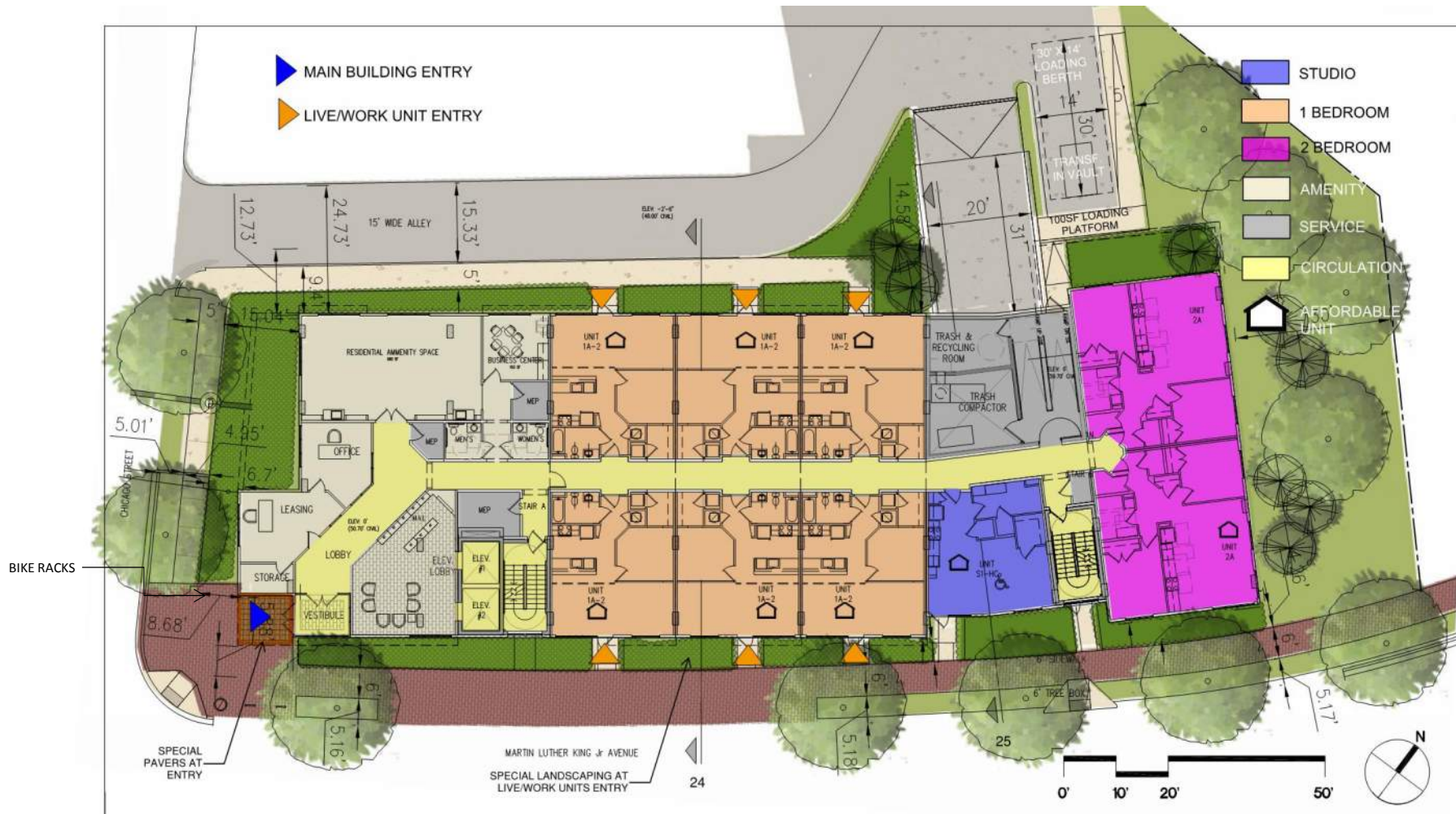
FOUR  POINTS

2255 MLK JR. AVE, SE
Washington, D.C.

8. SITE ACCESS AND CIRUCLATION DIAGRAM

November, 2014

G+P
GRIMM AND PARKER



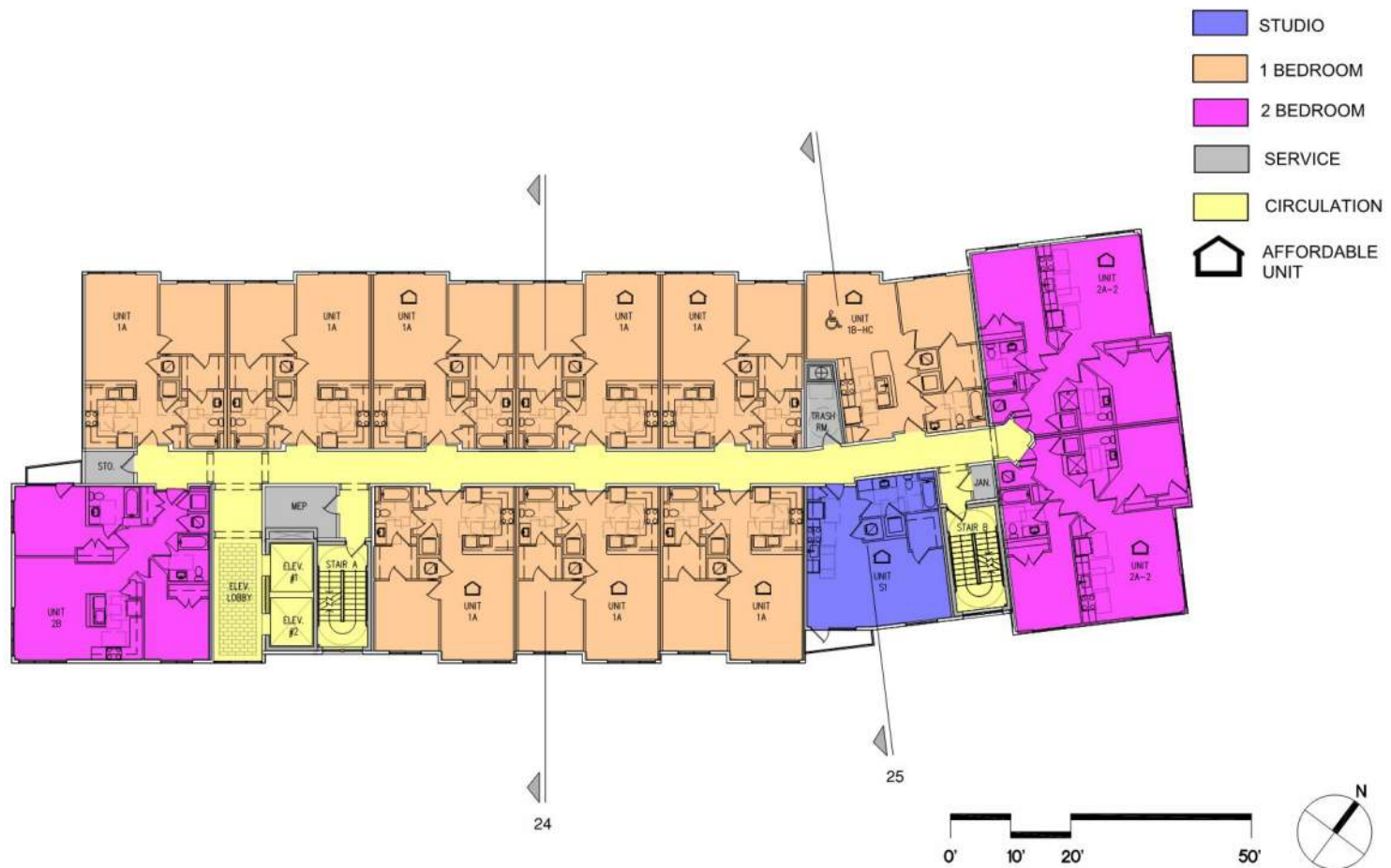
FOUR POINTS

2255 MLK JR. AVE, SE
Washington, D.C.

11. GROUND FLOOR PLAN

November, 2014

G+P
GRIMM AND PARKER



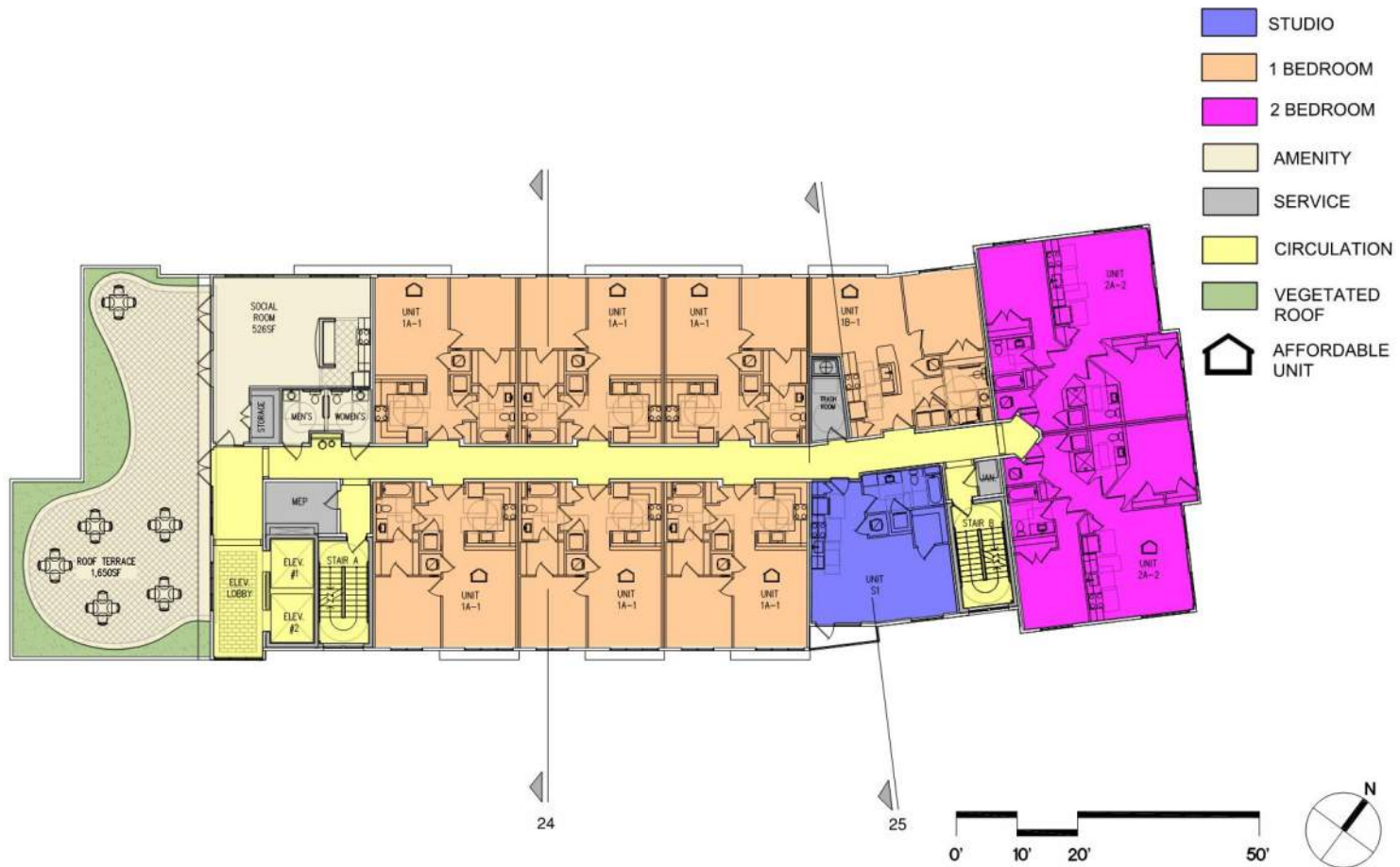
FOUR  POINTS

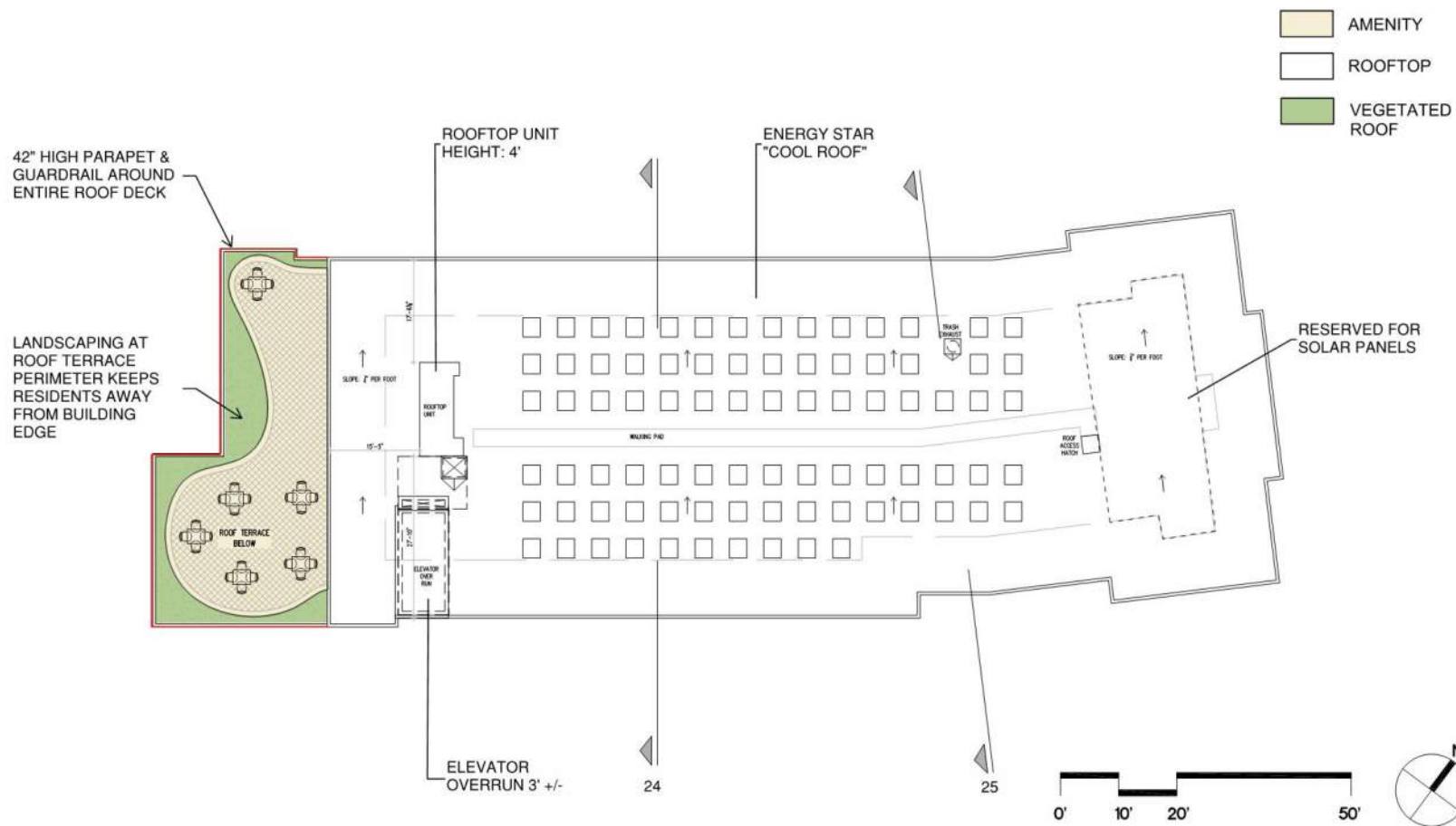
2255 MLK JR. AVE, SE
Washington, D.C.

13. TYPICAL FLOOR PLAN (3RD - 5TH)

November, 2014


GRIMM AND PARKER







VIEW LOOKING NORTH ON CORNER OF CHICAGO AVE AND MLK AVE



VIEW LOOKING NORTHWEST ON MAPLE VIEW TO MLK AVE



VIEW LOOKING SOUTH ON INTERSECTION OF PLEASANT ST AND MLK AVE



VIEW 1 - NO. 4 SALVATION ARMY



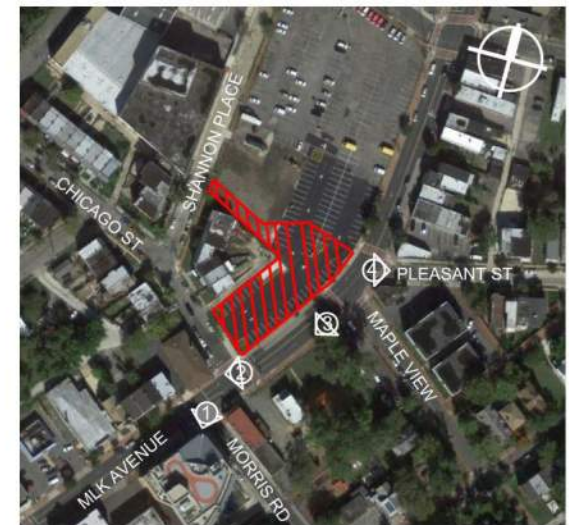
VIEW 2 - NO. 8 WHITMAN WALKER CLINIC



VIEW 3 - LOOKING SOUTH EAST ON MLK



VIEW 4 - BIKE SHARE ON PLEASANT ST



ANACOSTIA CONTEXT



**NEW DC GOVERNMENT OFFICES (Shannon Place)
GLASS AND METAL CANOPIES & PANELS**



**METAL CANOPIES & STOREFRONT
ALONG MLK Jr. Ave.**



LANDSCAPED ENTRIES MLK Jr. Ave.



**BRICK, METAL & GLASS STOREFRONTS
ALONG MLK Jr. Ave.**



BUILDINGS & WALKWAYS ALONG MLK Jr. Ave.

ANACOSTIA CONTEXT



SHERIDAN STATION (Sheridan Rd)



DC HUMAN SERVICES (MLK & V Street)



DC LOTTERY BUILDING (MLK & W Street)



FOUR  POINTS

2255 MLK JR. AVE, SE
Washington, D.C.

19. PERSPECTIVE VIEWS - FROM MLK AVENUE

November, 2014


GRIMM AND PARKER



FOUR  POINTS

2255 MLK JR. AVE, SE
Washington, D.C.

20. PERSPECTIVE VIEWS - MAIN ENTRANCE

November, 2014


GRIMM AND PARKER



FOUR  POINTS

2255 MLK JR. AVE, SE
Washington, D.C.

21. PERSPECTIVE VIEWS - LIVE/WORK UNIT ENTRY

November, 2014


GRIMM AND PARKER





FOUR  POINTS

2255 MLK JR. AVE, SE
Washington, D.C.

23. VIEW FROM MLK JR AVE LOOKING EAST
November, 2014


GRIMM AND PARKER



FOUR  POINTS

2255 MLK JR. AVE, SE
Washington, D.C.

25. VIEW FROM CHICAGO ST LOOKING SOUTHEAST
November, 2014



FAÇADE REVISIONS

Before



After



2255 MLK Jr. AVE

