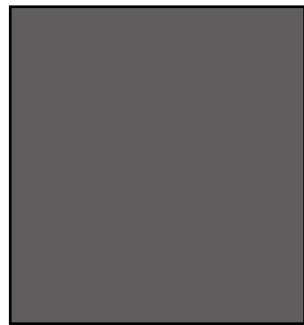


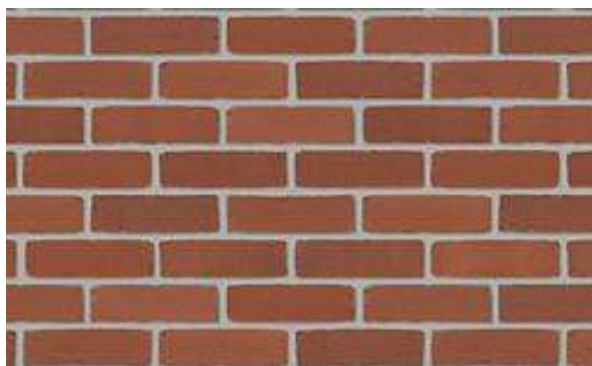
OPERABLE & FIXED WINDOWS



FIBER CEMENT PANELS
PANEL (SMOOTH) W/ REGLETS AND METAL
FURRING STRIPS. CUSTOM COLORS.



ALUMINUM PANEL:
GRAY



FACE BRICK:
RED BROWN BRICK

ALUMINUM PANEL

FIXED & OPERABLE
WINDOWS

FIBER CEMENT PANEL

FACE BRICK

FIXED WINDOW

METAL CANOPY

METAL DOOR &
STOREFRONT

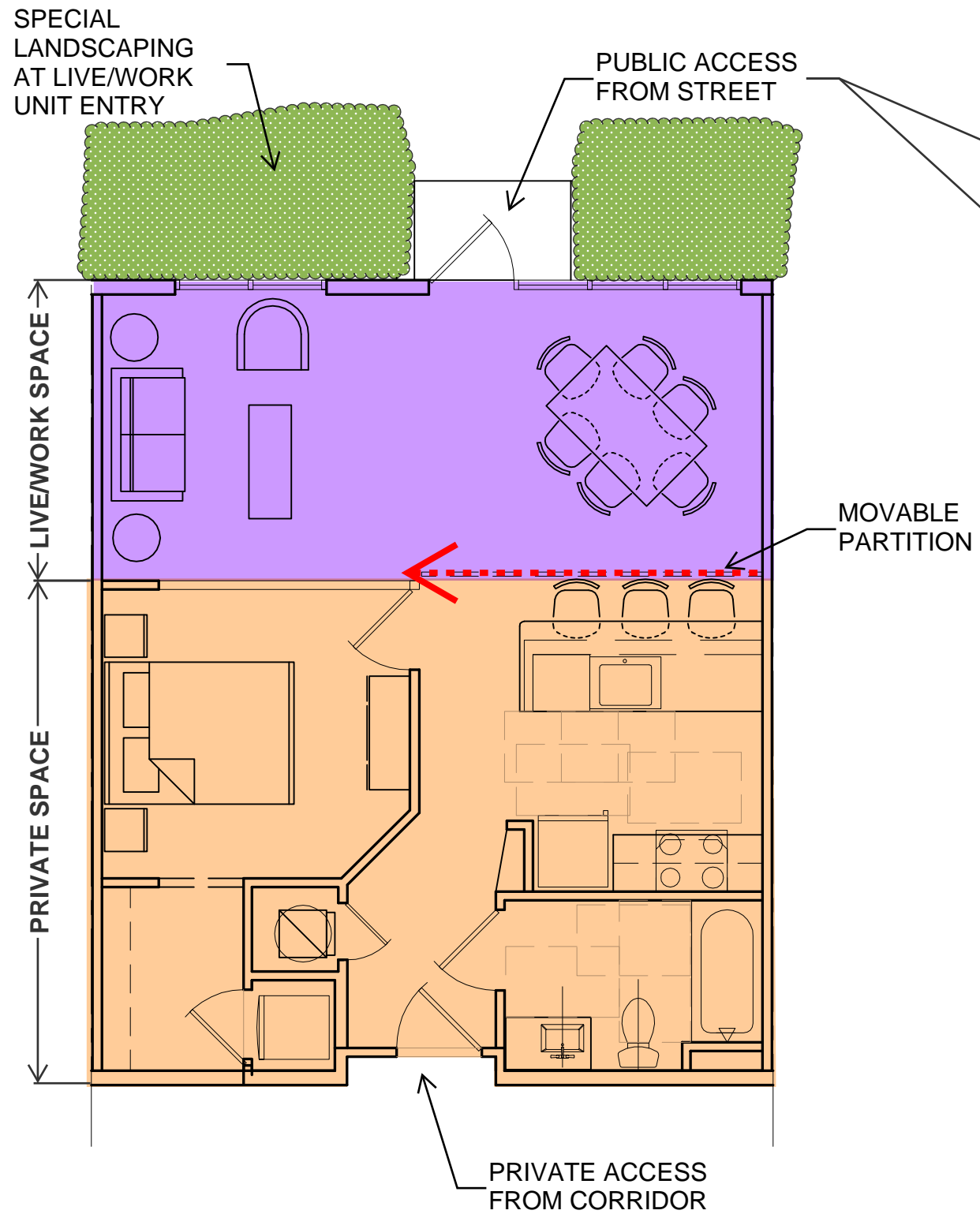
FIBER
CEMENT
PANEL

FACE
BRICK



DETAILED
AREA



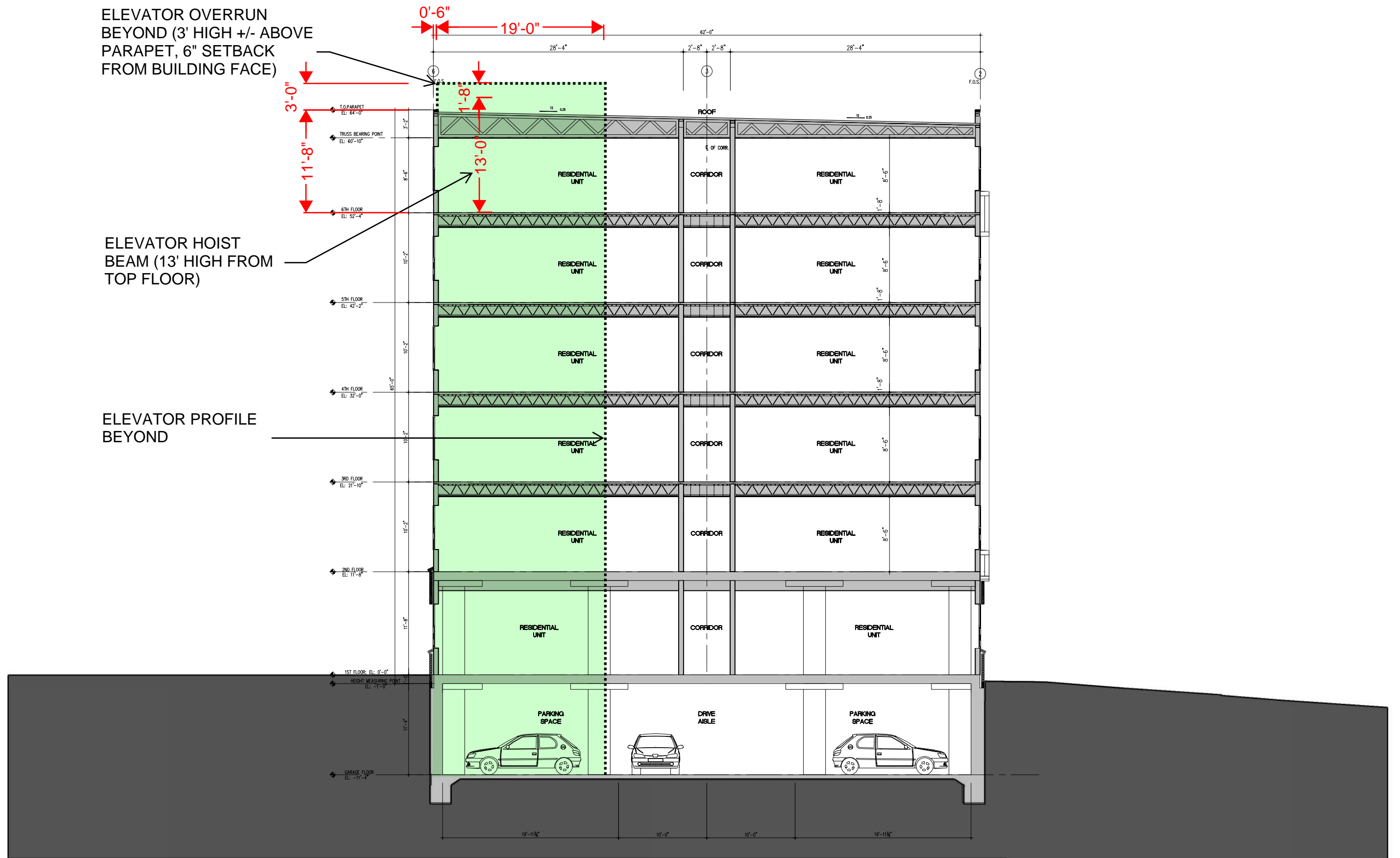


A1 ENLARGED ELEVATION A-A
TYPICAL LIVE / WORK STUDIO UNIT





A1 ENLARGED ELEVATION A-A
TYPICAL LIVE / WORK STUDIO UNIT



SCALE: 3/32" = 1'-0"

[illegible]The logo for Grimm and Parker, featuring a stylized 'G' and 'P' with a green plus sign between them, and the text 'GRIMM AND PARKER' below.



2255 MLK Jr Ave, SE | Washington DC
G+P Project No. 21410
Project will achieve minimum of 35 Optional Points
Anticipated Optional Points: 46
Modified: 04/15/2014

M = MANDATORY
= AVAILABLE OPTIONAL POINTS

2011 Enterprise Green Communities
Criteria Checklist

This checklist provides an overview of the technical requirements within the Enterprise Green Communities Criteria. **To achieve Enterprise Green Communities Certification, all projects must achieve compliance with the Criteria mandatory measures applicable to that construction type. Additionally, New Construction projects must achieve 35 optional points, Substantial Rehab projects must achieve 30 optional points, and Moderate Rehab projects must also achieve 30 optional points.**

1: INTEGRATIVE DESIGN	
<input checked="" type="radio"/> YES <input type="radio"/> NO <input type="radio"/> MAYBE	M
1.1a Green Development Plan: Integrative Design Meeting(s) Conduct one or more integrative design meetings and submit a Green Development Plan or equivalent documentation.	
<input checked="" type="radio"/> YES <input type="radio"/> NO <input type="radio"/> MAYBE	M
1.1b Green Development Plan: Criteria Documentation Create design and construction documentation to include information on implementation of appropriate Enterprise Green Communities Criteria.	
<input type="radio"/> YES <input checked="" type="radio"/> NO <input type="radio"/> MAYBE	2
1.2a Universal Design (New Construction only) Design a minimum of 15% of the dwelling units (no fewer than one) in accordance with ICC/ANSI A117.1, Type A, Fully Accessible guidelines.	
<input type="radio"/> YES <input type="radio"/> NO <input type="radio"/> MAYBE	2 or 3 N/A
1.2b Universal Design (Substantial and Moderate Rehab only) Design a minimum of 10% of the dwelling units (no fewer than one) in accordance with ICC/ANSI A117.1, Type A, Fully Accessible guidelines [2 points] and, for an additional point, the remainder of the ground-floor units and elevator-reachable units should have accessible unit entrances.	
0 POINTS SUBTOTAL OPTIONAL POINTS	
2: LOCATION + NEIGHBORHOOD FABRIC	
<input checked="" type="radio"/> YES <input type="radio"/> NO <input type="radio"/> MAYBE	M
2.1 Sensitive Site Protection (New Construction only) Do not locate new development, including buildings, built structures, roads, or other parking areas, on portions of sites that meet any of the following provisions: <ul style="list-style-type: none">Land within 100 feet of wetlands, including isolated wetlands or streamsLand on slope greater than 15%Land with prime soils, unique soils, or soils of state significancePublic parklandLand that is specifically identified as habitat for any species on federal or state threatened or endangered listsLand with elevation at or below the 100-year floodplain	
<input checked="" type="radio"/> YES <input type="radio"/> NO <input type="radio"/> MAYBE	M
2.2 Connections to Existing Development and Infrastructure (New Construction only, except for projects located on rural tribal lands, in colonias communities, or in communities of population less than 10,000) Locate project on a site with access to existing roads, water, sewers, and other infrastructure within or contiguous to existing development. Connect the project to the pedestrian grid.	



2011 ENTERPRISE GREEN COMMUNITIES CRITERIA CHECKLIST

M = MANDATORY
= AVAILABLE OPTIONAL POINTS

<input checked="" type="radio"/> YES <input type="radio"/> NO <input type="radio"/> MAYBE	M
LOCATION + NEIGHBORHOOD FABRIC (CONTINUED)	
2.3 Compact Development (New Construction only) Design and build the project to a density of at least: <ul style="list-style-type: none">Urban/Small Cities: 10 dwelling units per acre, or at least 75% of surrounding net residential density, whichever is greaterSuburban/Mid-Size Towns: 7 dwelling units per acre, or at least 75% of surrounding net residential density, whichever is greaterRural/Tribal/Small Towns: 5 units per acre for detached or semi-detached housing; 10 units per acre for townhomes; 15 units per acre for apartments	
<input checked="" type="radio"/> YES <input type="radio"/> NO <input type="radio"/> MAYBE	5 or 6 5
PROPOSED SITE DENSITY: 140 U/ACRE +/-	
<input checked="" type="radio"/> YES <input type="radio"/> NO <input type="radio"/> MAYBE	M
2.4 Compact Development Design and build the project to a density of at least: <ul style="list-style-type: none">Urban/Small Cities: 15 dwelling units per acre, or at least 75% of surrounding net residential density, whichever is greater [5 points]Suburban/Mid-Size Towns: 10 dwelling units per acre, or at least 75% of surrounding net residential density, whichever is greater [6 points]Rural/Tribal/Small Towns: 7.5 units per acre for detached or semi-detached housing; 12 units per acre for townhomes; 20 units per acre for apartments [6 points]	
<input checked="" type="radio"/> YES <input type="radio"/> NO <input type="radio"/> MAYBE	M
2.5 Proximity to Services (New Construction only) Locate the project within: <ul style="list-style-type: none">Urban/Small Cities: a 0.25-mile walk distance of at least two OR a 0.5-mile walk distance of at least four of the list of facilitiesSuburban/Mid-Size Towns: a 0.5-mile walk distance of at least three OR a 1-mile walk distance of at least six of the list of facilitiesRural/Tribal/Small Towns: two miles of at least two of the list of facilities	
<input type="radio"/> YES <input type="radio"/> NO <input type="radio"/> MAYBE	M N/A
2.6 Preservation of and Access to Open Space: Rural/Tribal/Small Towns Only (New Construction only) Set aside a minimum of 10% of the total project acreage as open space for use by residents OR locate project within a 0.25-mile walk distance of dedicated public open space that is a minimum of 0.75 acres	
<input type="radio"/> YES <input checked="" type="radio"/> NO <input type="radio"/> MAYBE	3 max
2.7 Preservation of and Access to Open Space Set aside a percentage of the total project acreage as open space for use by residents: 20% [1 point]; 30% [2 points]; and 40% + written statement of preservation/conservation policy for set-aside land [3 points]	
<input checked="" type="radio"/> YES <input type="radio"/> NO <input type="radio"/> MAYBE	5
2.8 Access to Public Transportation Locate the project within: <ul style="list-style-type: none">Urban/Small Cities: a 0.5-mile walk distance of combined transit services (bus, rail, and ferry) constituting 76 or more transit rides per weekday and 32 or more transit rides on the weekendSuburban/Mid-Size Towns: a 0.5-mile walk distance of combined transit services (bus, rail, and ferry) constituting 60 or more transit rides per weekday and some type of weekend ride optionRural/Tribal/Small Towns: 5-mile distance of either a vehicle share program, a dial-a-ride program, an employer van pool, or public-private regional transportation	
<input type="radio"/> YES <input type="radio"/> NO <input type="radio"/> MAYBE	5 N/A
2.9 Walkable Neighborhoods: Connections to Surrounding Neighborhood— Rural/Tribal/Small Towns Connect the project to public spaces, open spaces, and adjacent development by providing at least three separate connections from the project to sidewalks or pathways in surrounding neighborhoods and natural areas.	



M = MANDATORY
= AVAILABLE OPTIONAL POINTS

<div><div><div><div></div><div>YES</div></div><div><div><div></div></div><div>NO</div></div></div><div><div><div></div></div><div>MAYBE</div></div></div>

7
max

M = MANDATORY
= AVAILABLE OPTIONAL POINTS

<div>4: WATER CONSERVATION</div>	
<div><div><div><div></div><div>YES</div></div><div><div><div></div></div><div>NO</div></div></div><div><div><div></div></div><div>MAYBE</div></div></div>	

M