

ELEVATIONS



PL FIRST STREET SW

PL



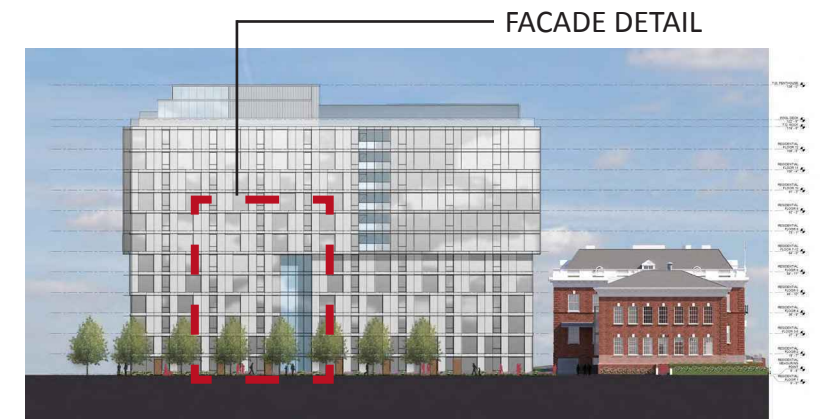
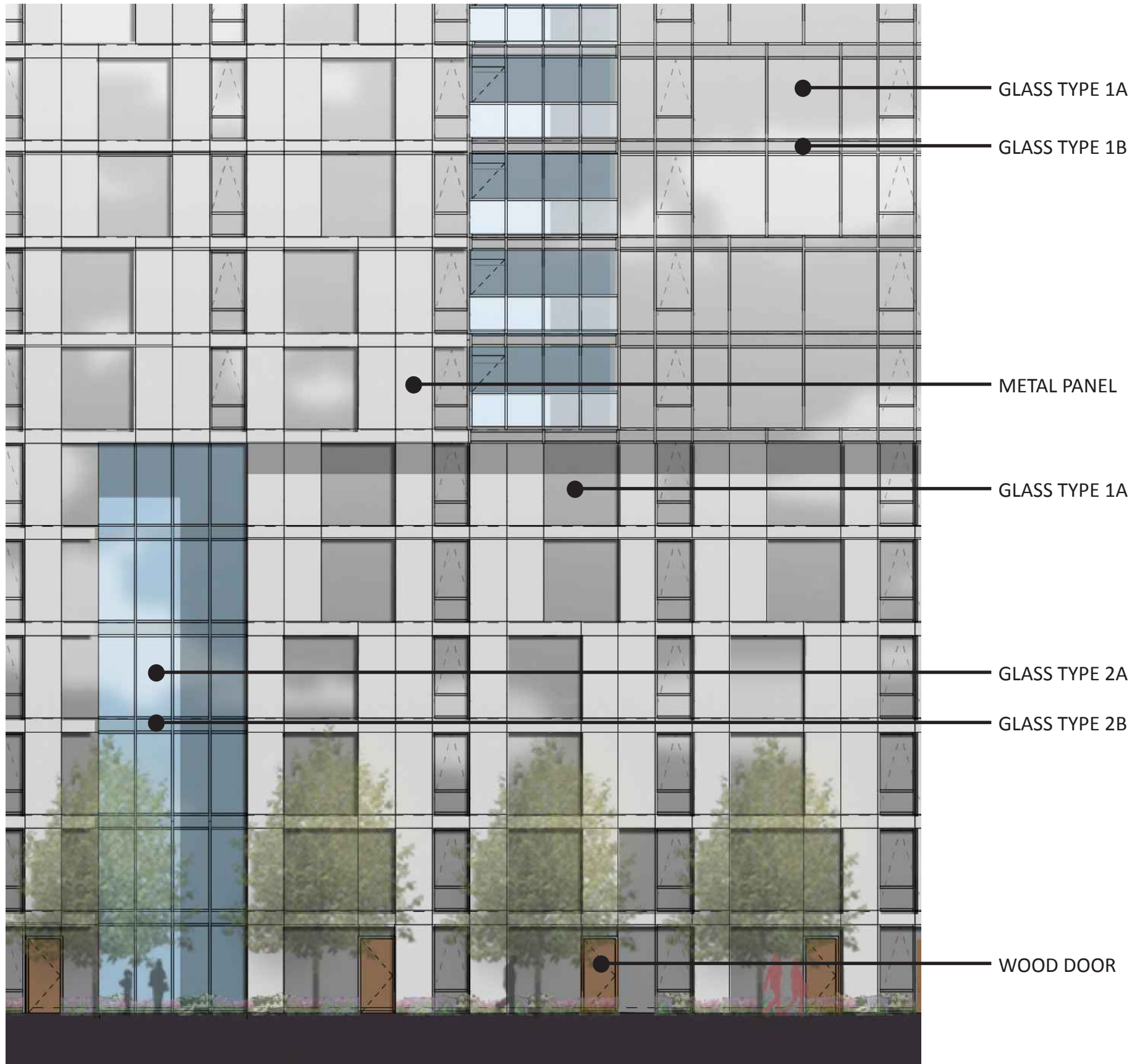


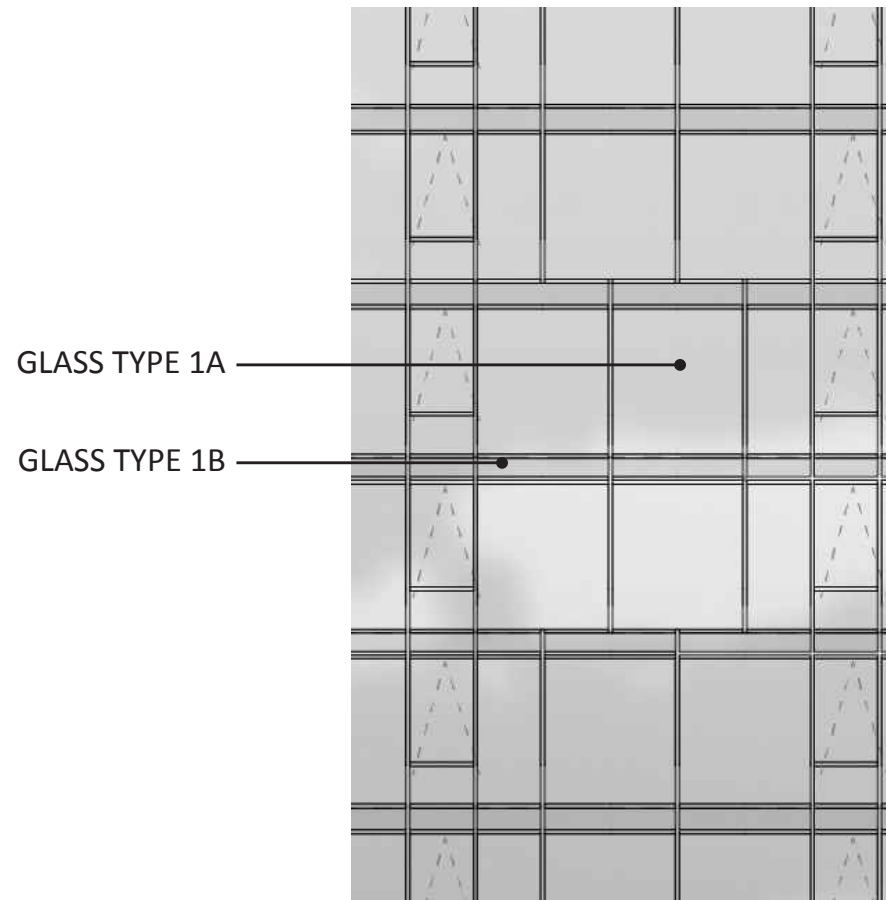
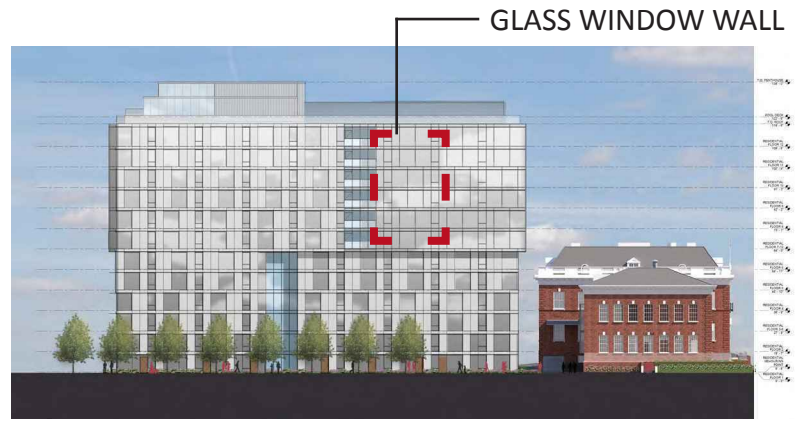
- T.O. PENTHOUSE
136'-0"
- POOL DECK
122'-8"
- T.O. ROOF
119'-6"
- RESIDENTIAL FLOOR 12
109'-6"
- RESIDENTIAL FLOOR 11
100'-4"
- RESIDENTIAL FLOOR 10
91'-3"
- RESIDENTIAL FLOOR 9
82'-2"
- RESIDENTIAL FLOOR 8
73'-1"
- RESIDENTIAL FLOOR 7-12
64'-0"
- RESIDENTIAL FLOOR 6
54'-11"
- RESIDENTIAL FLOOR 5
45'-10"
- RESIDENTIAL FLOOR 4
36'-9"
- RESIDENTIAL FLOOR 3-6
27'-8"
- RESIDENTIAL FLOOR 2
18'-7"
- RESIDENTIAL MEASURING POINT
9'-6"
- RESIDENTIAL FLOOR 1
0'-0"



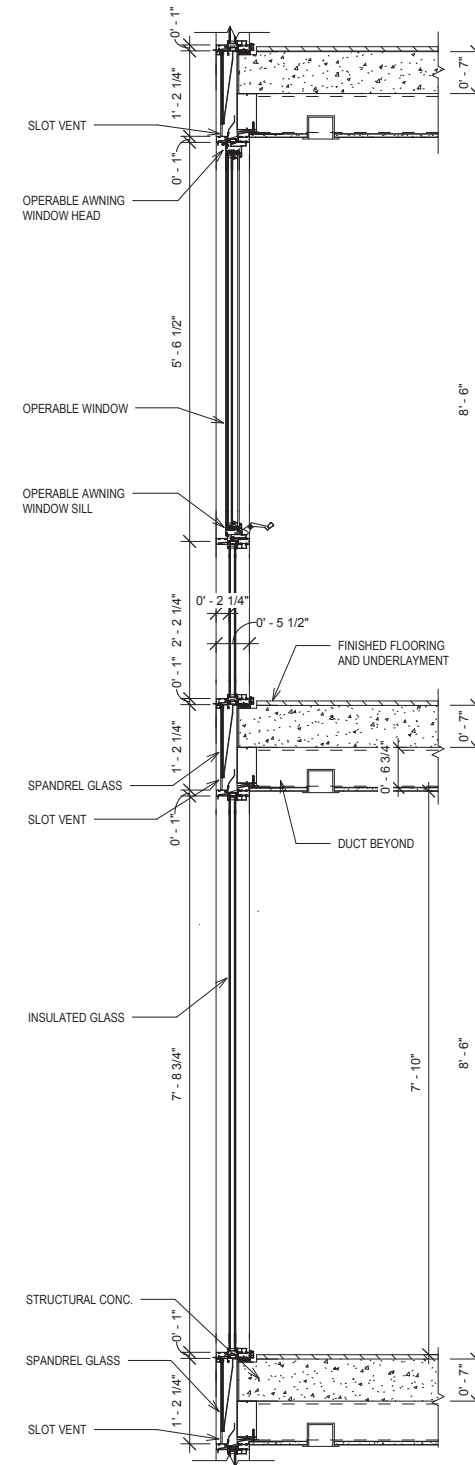




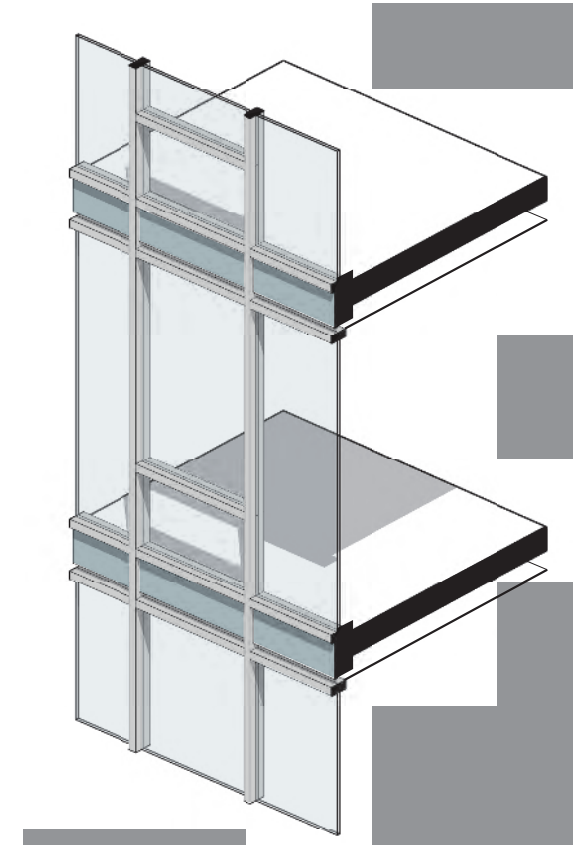




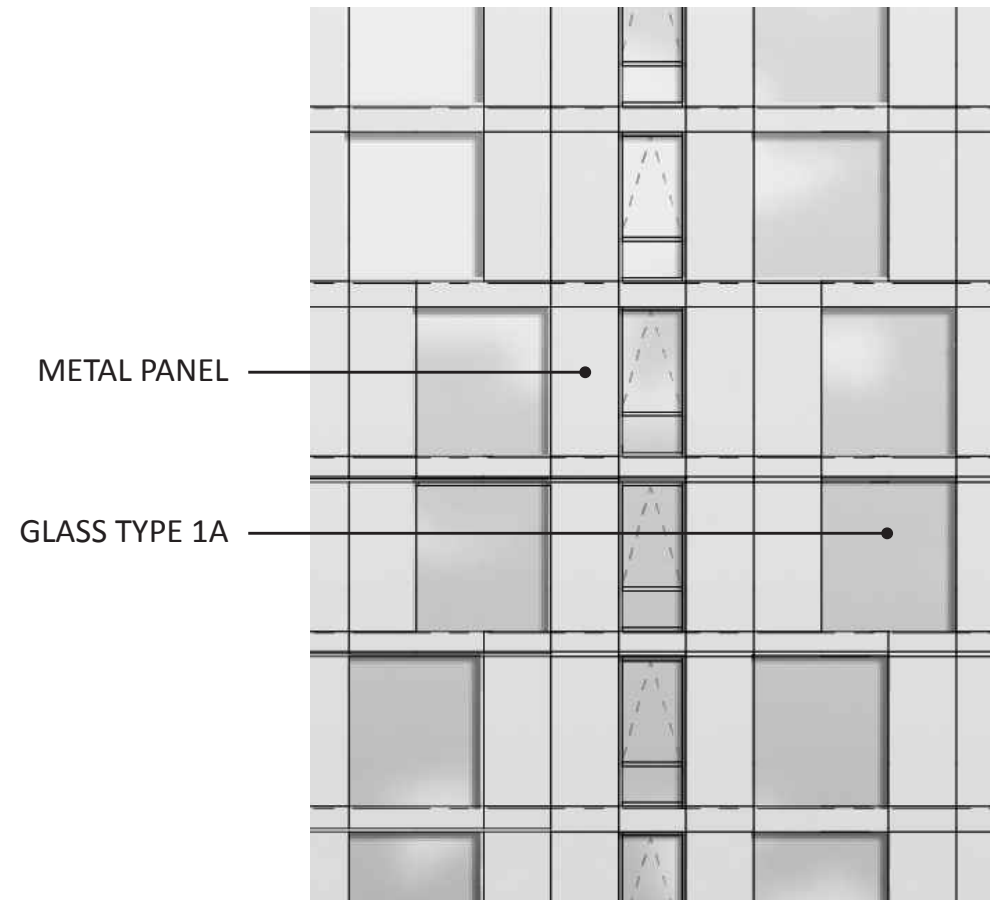
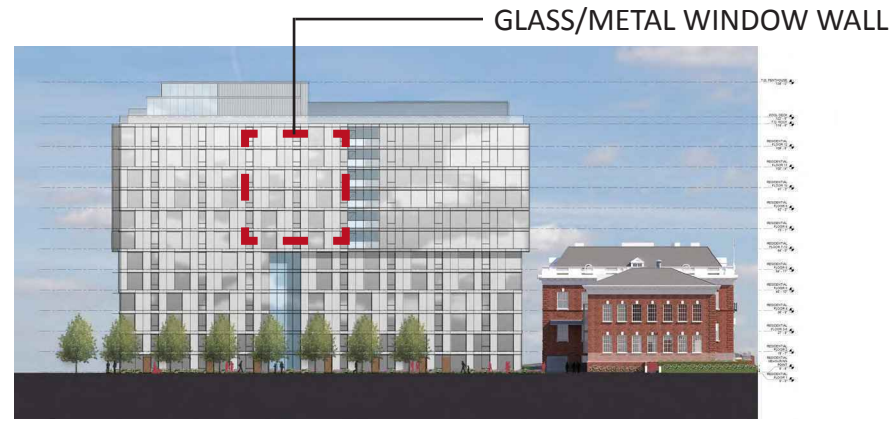
GLASS WINDOW WALL



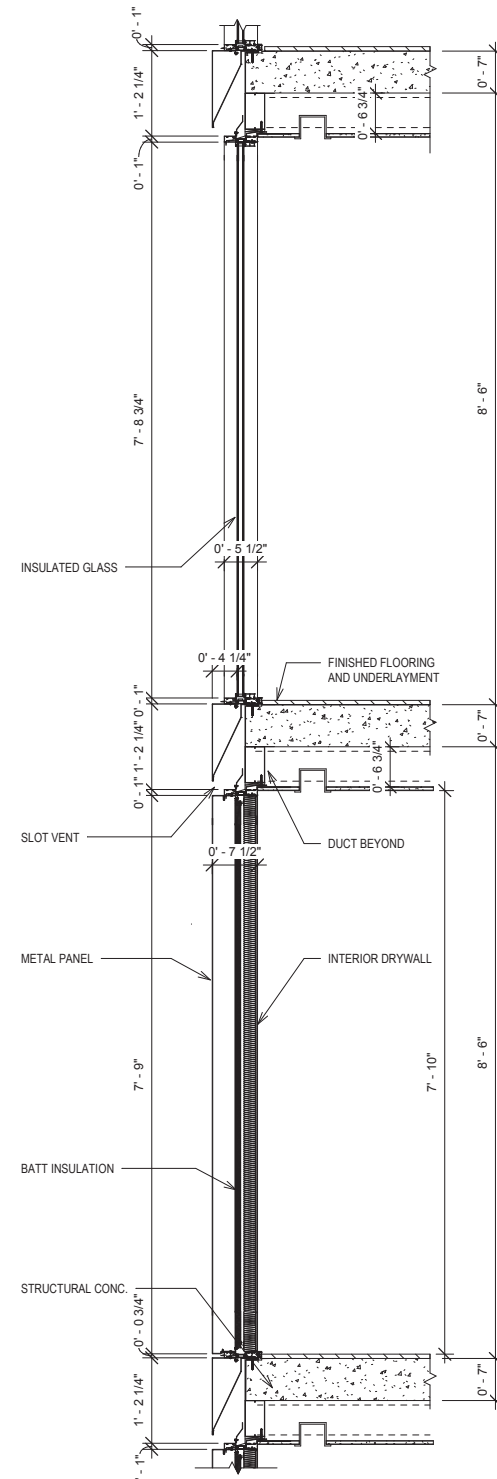
GLASS WINDOW WALL 3/8" = 1'



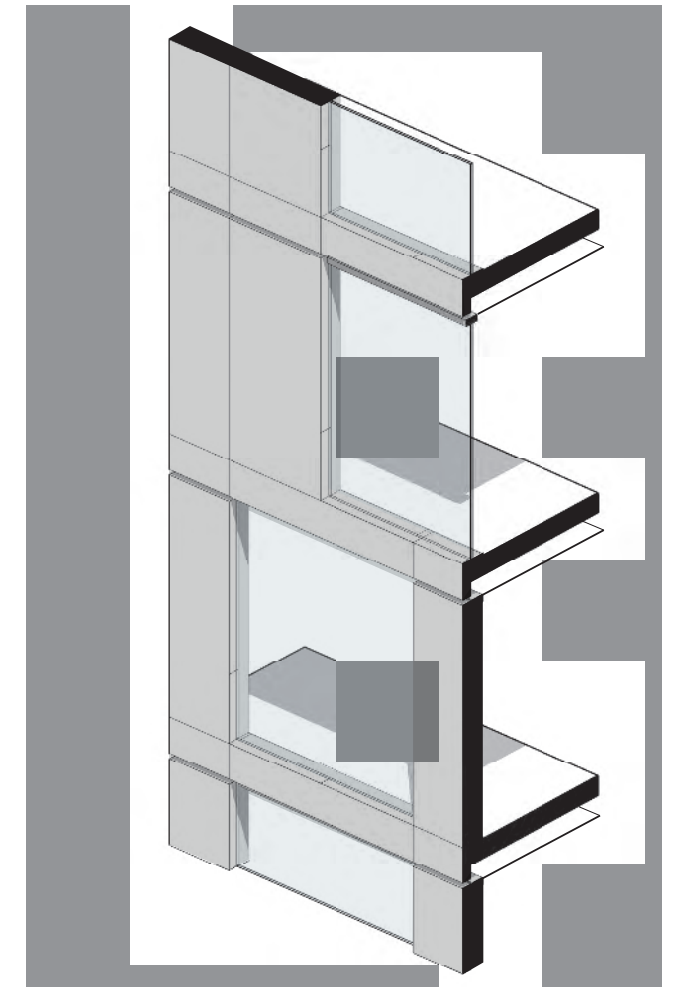
GLASS WINDOW WALL AXON



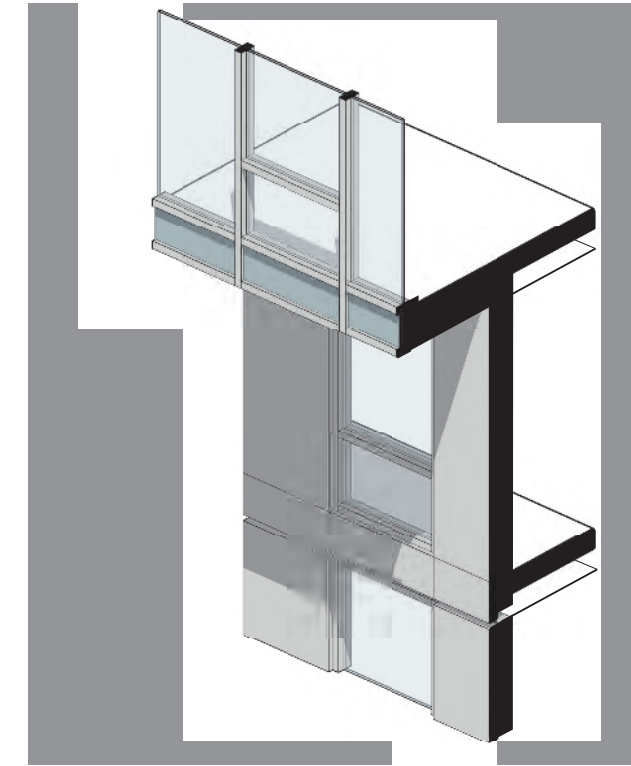
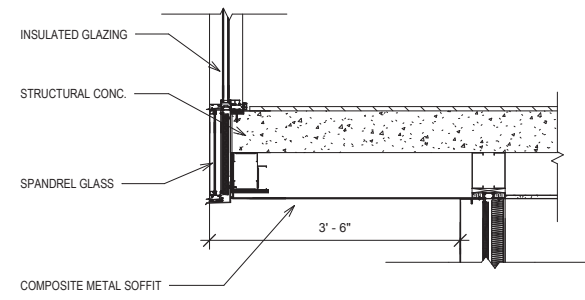
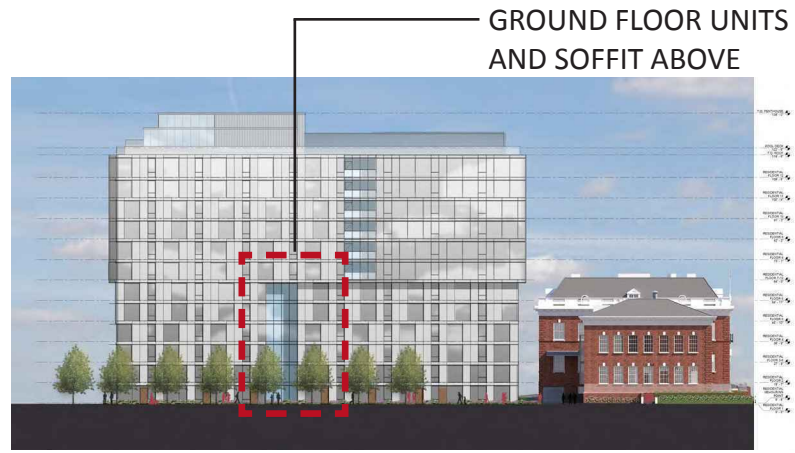
GLASS/METAL WINDOW WALL



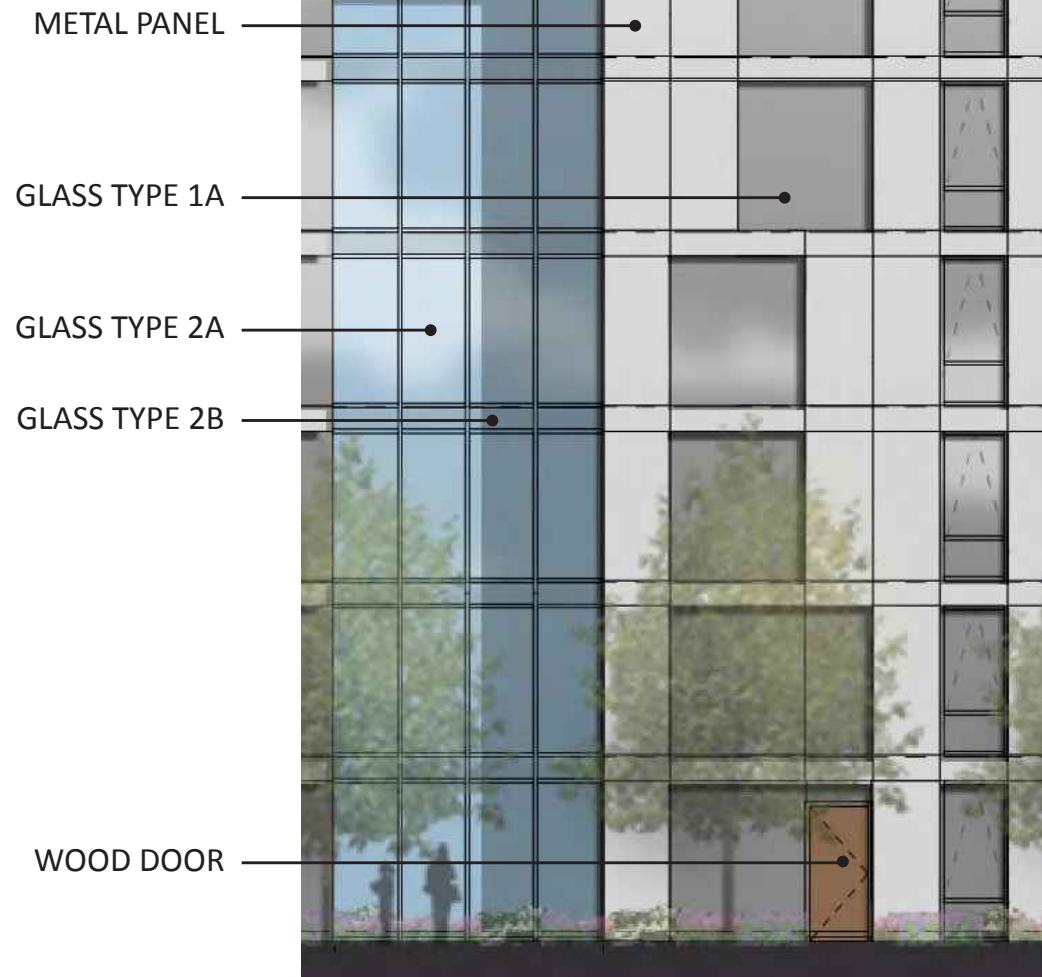
GLASS/METAL WINDOW WALL 3/8" = 1'



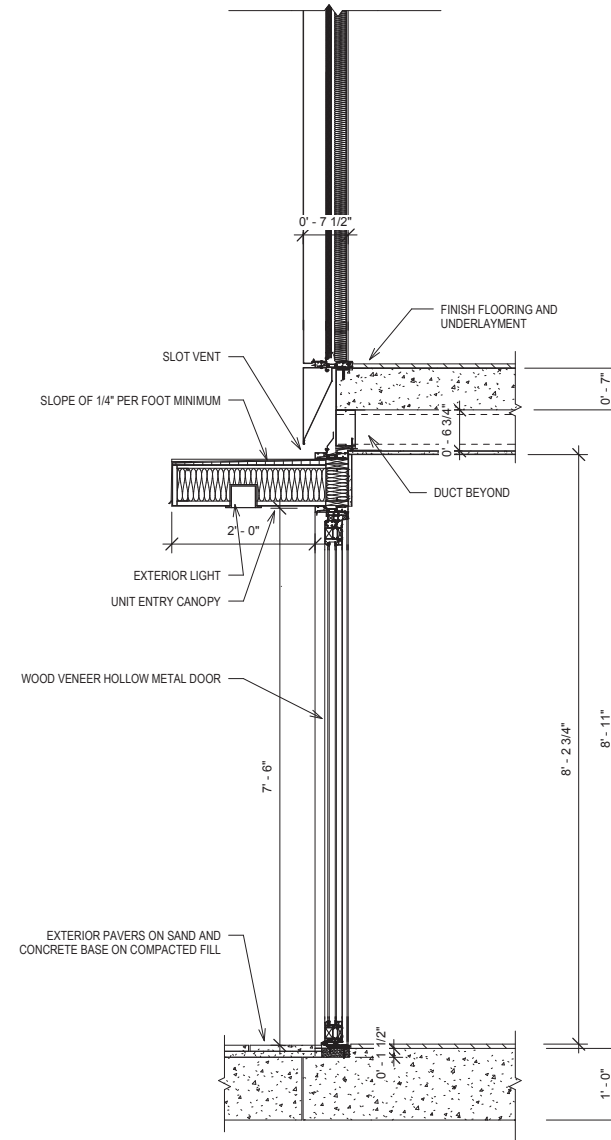
GLASS/METAL WINDOW WALL AXON



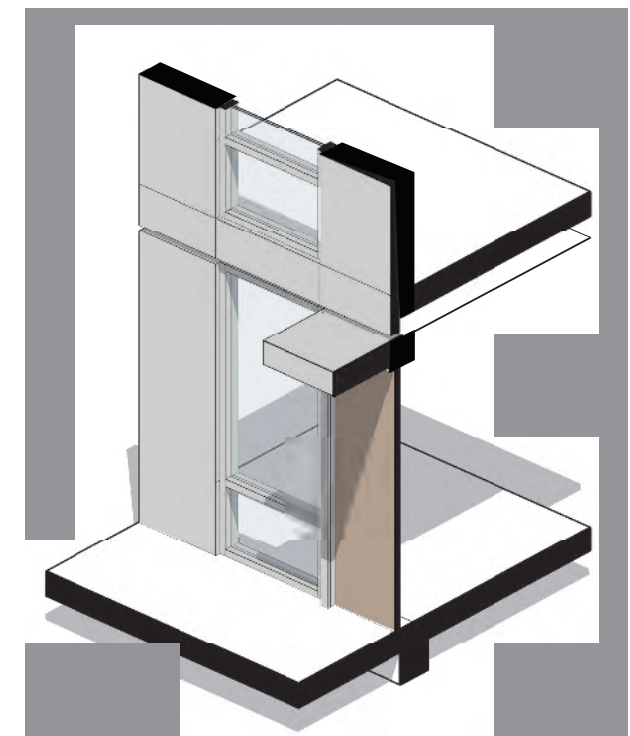
SOFFIT AXON



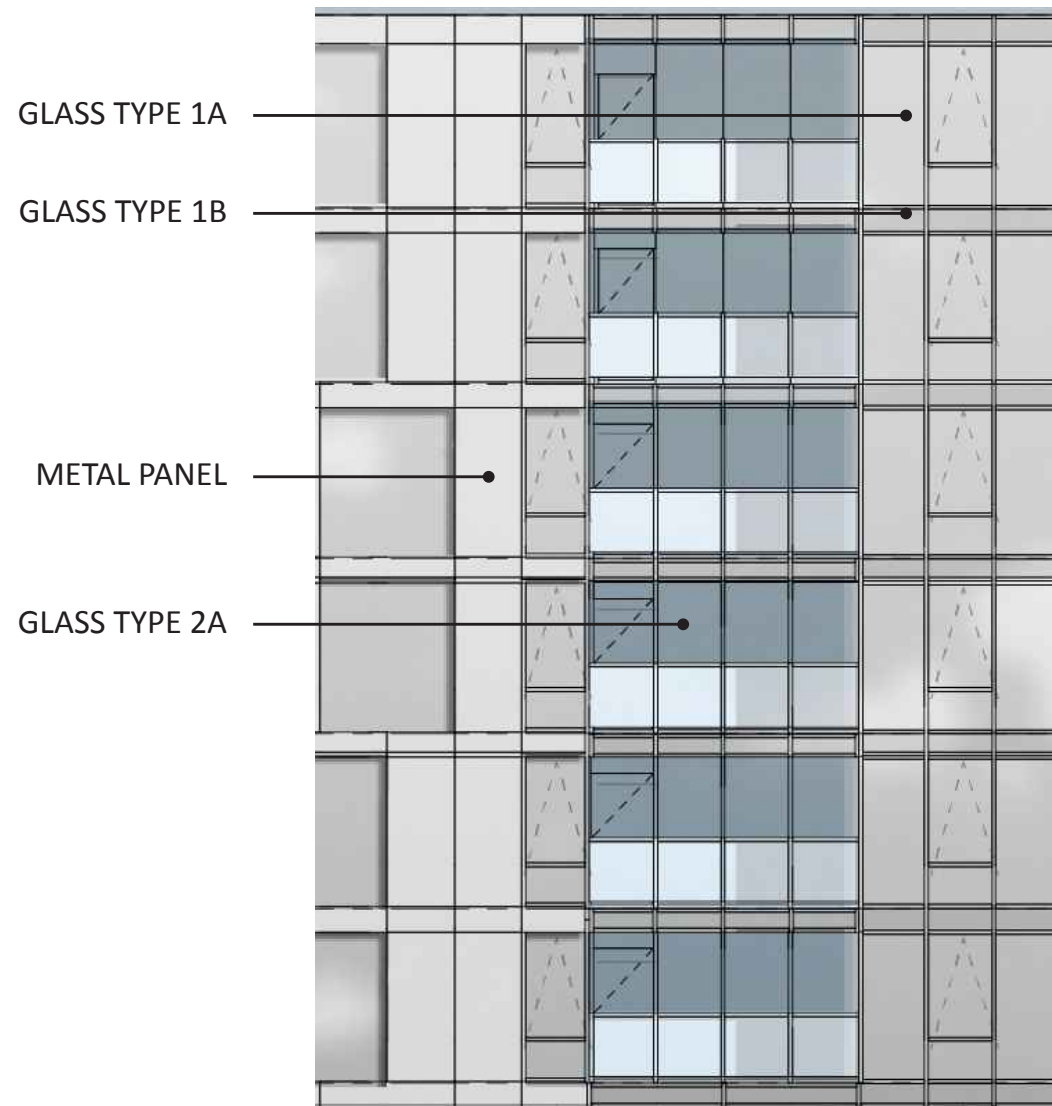
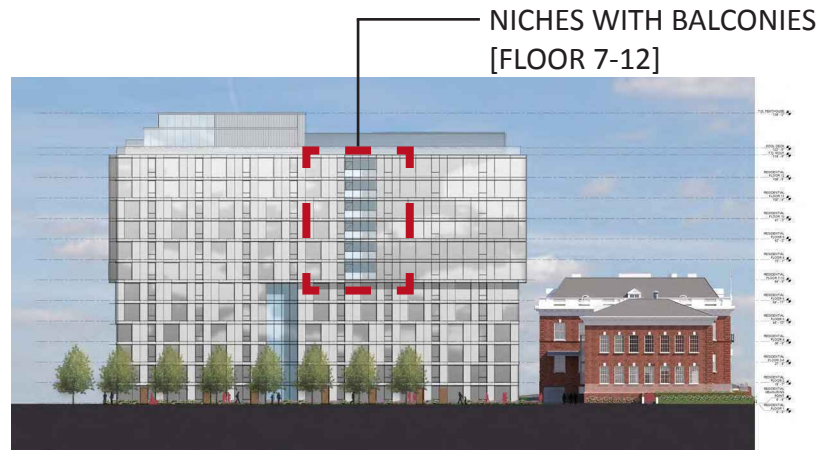
GROUND FLOOR UNIT ENTRY



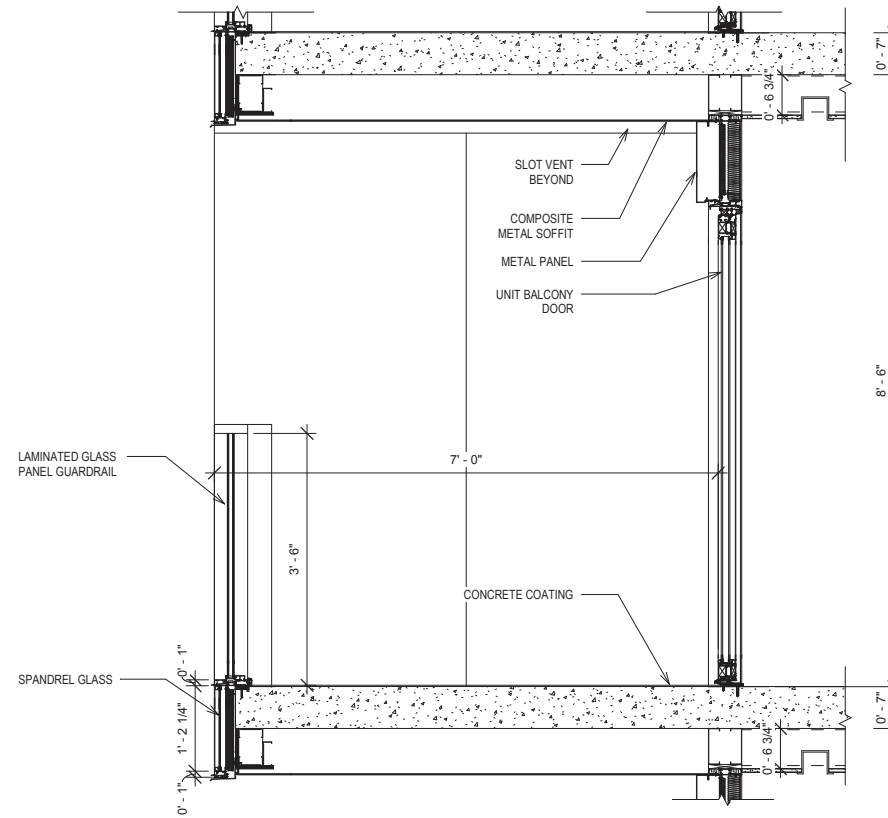
GROUND FLOOR UNIT ENTRY 3/8" = 1'



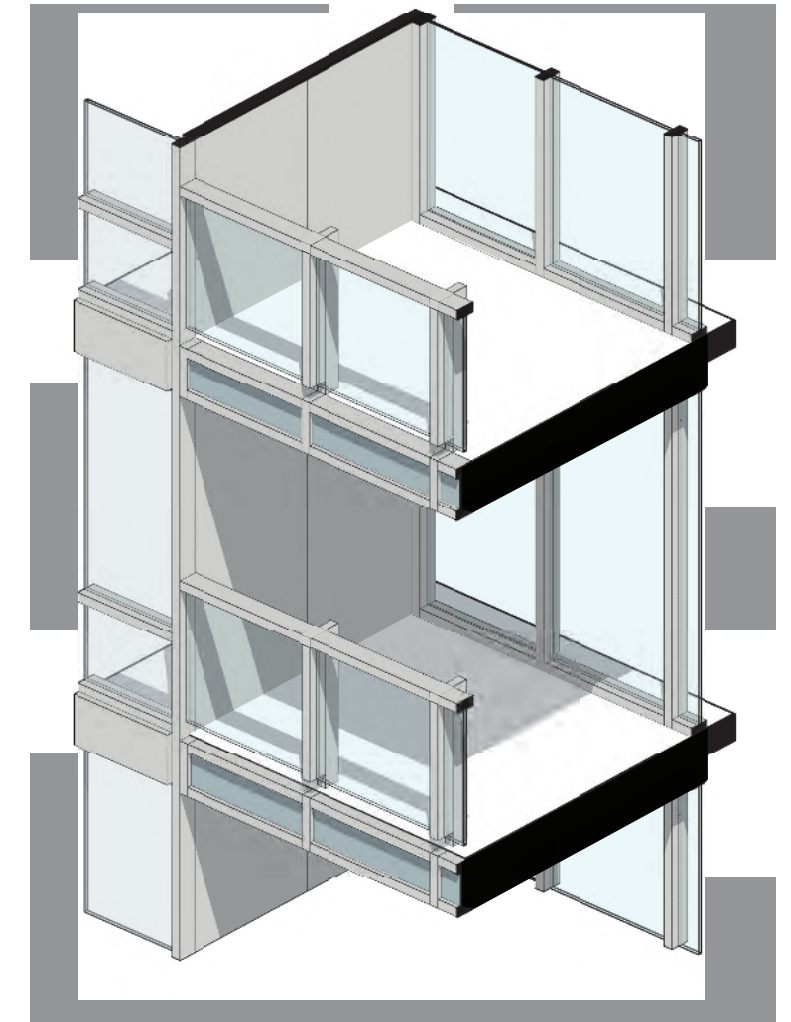
GROUND FLOOR UNIT ENTRY AXON



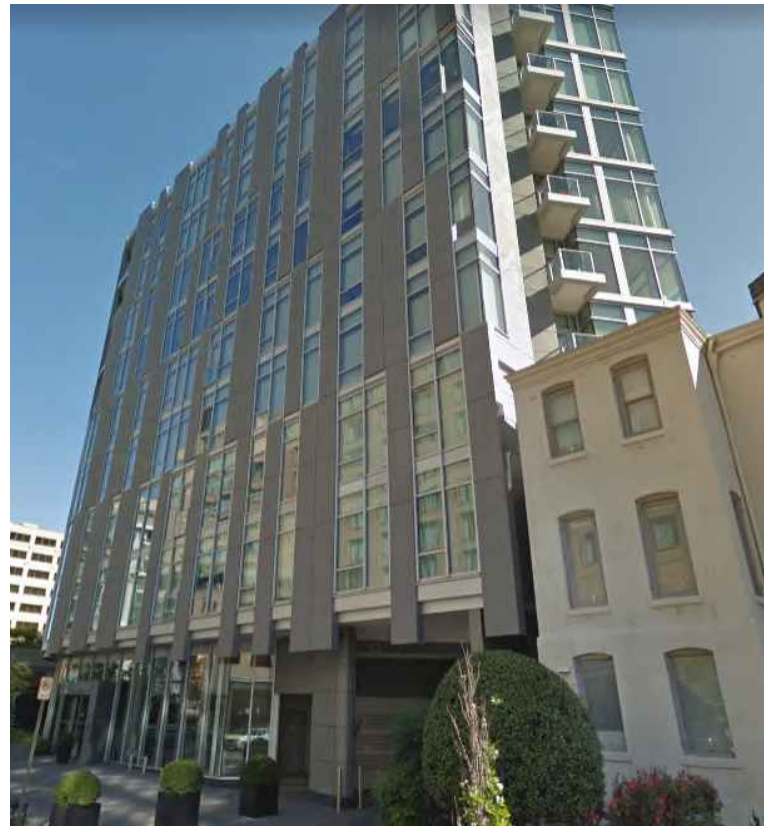
NICHES WITH BALCONIES



BALCONY DETAIL 3/8" = 1'



NICHES WITH BALCONIES AXON



PRECEDENT - 22 WEST



PRECEDENT - ARRIS

HISTORIC BUILDING



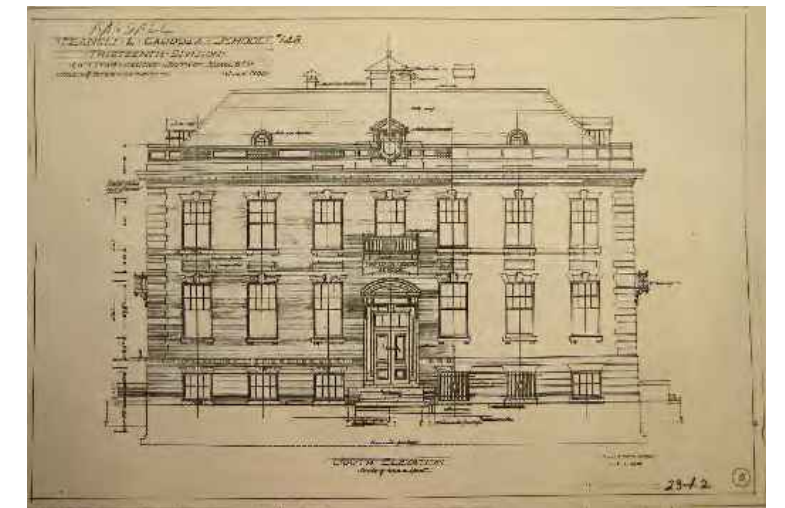




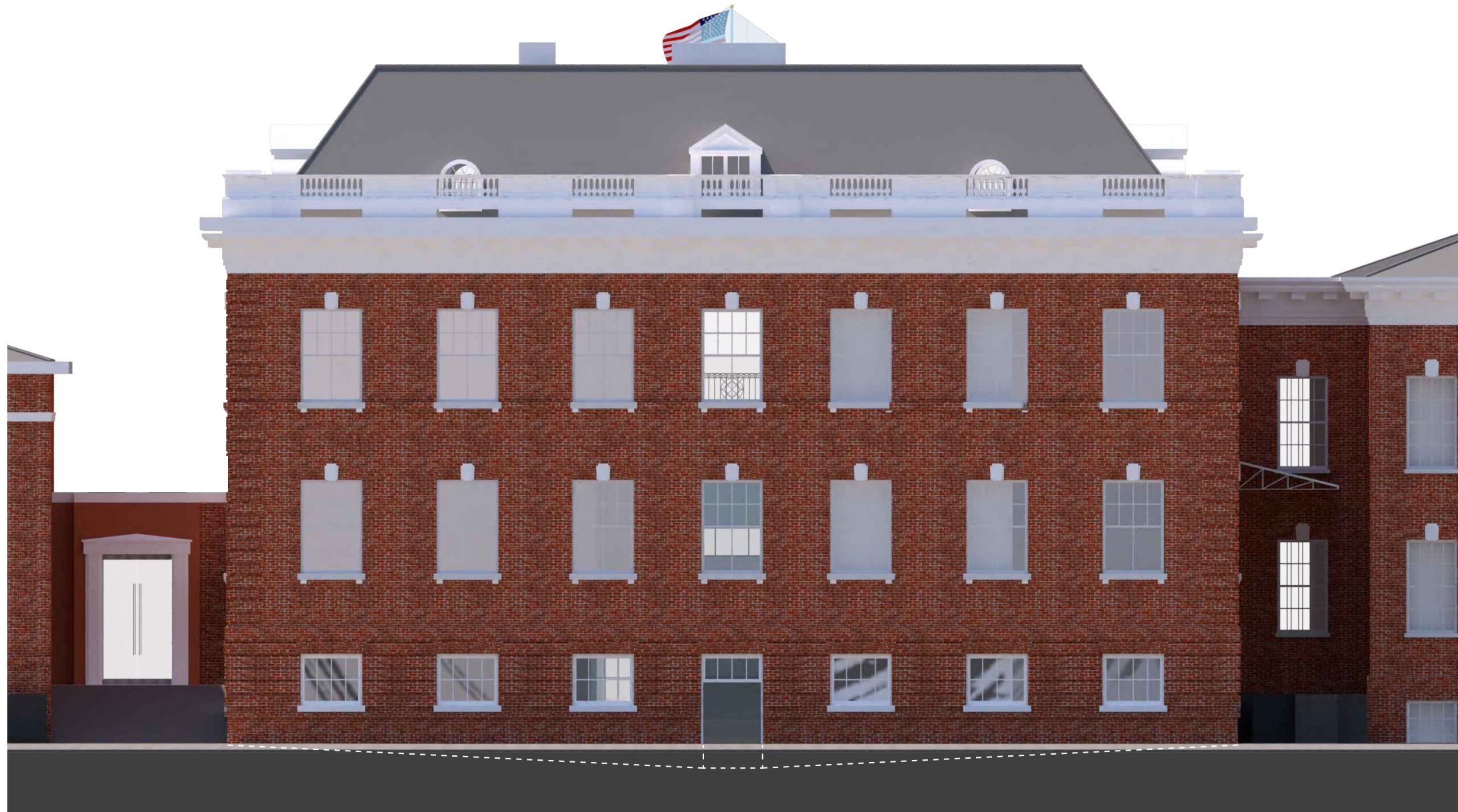
PROPOSED SOUTH ELEVATION



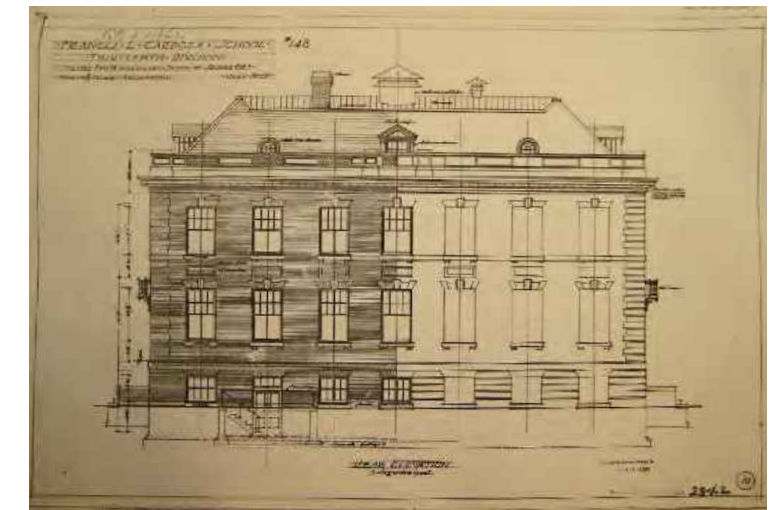
SOUTH ELEVATION (EXISTING CONDITIONS)



SOUTH ELEVATION - ORIGINAL DRAWING (1905)



PROPOSED NORTH ELEVATION



NORTH ELEVATION - ORIGINAL DRAWING (1905)



