

Amelanchier canadensis



Leucothoe fontanesiana 'Nana'



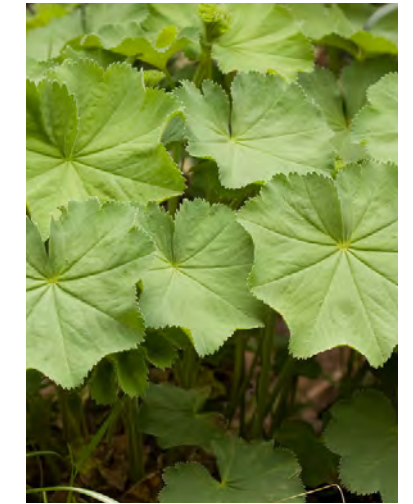
Sarcococca hookeriana var. humilis



Taxus baccata 'Repandens'



Astilbe japonica 'Deutschland'



Alchemilla mollis



Alchemilla mollis 'Auslese'



Hellebores foetidus



Hellebores niger 'White Lady'



Carex flaccosperma



Carex platyphylla



Hakonechloa 'Aureola'



Hakonechloa macra 'Fubuki'



Rohdea japonica



Athyrium nipponicum 'Pictum'



Dryopteris erythrosora



Polystichum acrostichoides



Thelypteris decursive-pinnata

H STREET SW: REPRESENTATIVE PLANT PALETTE



Betula nigra



Fargesia sp.



Leucothoe fontanesiana 'Nana'



Sarcococca hookeriana var. humilis



Taxus baccata 'Repandens'



Alchemilla mollis 'Auslese'



Helleborus niger 'White Lady'



Rohdea japonica



Leucojum aestivum



Sagina subulata



Calamagrostis brachytricha



Hakonechloa macra 'Aureola'



Hakonechloa macra 'Fubuki'



Sporobolus heterolepis



Athyrium filix-femina ssp. asplenioides



Athyrium nipponicum 'Pictum'



Cyrtomium falcatum 'Rochfordianum'



Dryopteris erythrosora

COURTYARD: REPRESENTATIVE PLANT PALETTE

GREENROOF - REPRESENTATIVE EXTENSIVE PALETTE

BOTANICAL NAME / COMMON NAME

PERENNIALS

- Allium cernuum / Nodding Onion
- Allium schoenoprasum / Chives
- Opuntia humifusa / Prickly Pear
- Ruellia humilis / Wild Petunia
- Sedum acre / Stonecrop
- Sedum acre 'Aureum' / Aureum Stonecrop
- Sedum acre 'Octoberfest' / Stonecrop
- Sedum album / Stonecrop
- Sedum album 'Chloroticum' / Stonecrop
- Sedum album 'Murale' / Murale Stonecrop
- Sedum cauticola / Stonecrop
- Sedum cauticola 'Lidakense' / Lidakense Stonecrop
- Sedum floriferum 'Weihenstephaner Gold' / Weihenstephaner Gold Stonecrop
- Sedum hybridum 'Immergrunchen' / Immergrunchen Stonecrop
- Sedum kamtschaticum / Kamtschaticum Stonecrop
- Sedum middendorffianum var. diffusum / Stonecrop
- Sedum reflexum / Stonecrop
- Sedum rupestre 'Angelina' / Stonecrop
- Sedum sexangulare / Stonecrop
- Sedum sieboldii / Stonecrop
- Sedum spurium 'Dragon's Blood' / Dragon's Blood Stonecrop
- Sedum spurium 'Leningrad White' / Leningrad White Stonecrop
- Sedum spurium var Album / Stonecrop
- Sedum telephioides / Stonecrop
- Sedum ternatum / Stonecrop
- Symphyotrichum ericoides (syn. Aster ericoides) / Heath White Aster
- Symphyotrichum ericoides 'Snow Flurry' (syn. Aster ericoides) White Aster
- Thymus praecox coccineus / Creeping Thyme
- Thymus praecox minus / Creeping Thyme
- Thymus serphyllum 'Coccineum' / Creeping Thyme

GRASSES

- Bouteloua curtipendula / Sideoats grama



Allium cernuum



Allium schoenoprasum



Ruellia humilis



Sedum acre 'Aureum'



Sedum album 'Murale'



Sedum cauticola



Sedum floriferum
'Weihenstephaner Gold'



Sedum hybridum
'Immergrunchen'



Sedum sexangulare



Sedum ternatum



Thymus praecox coccineus



Thymus serphyllum 'Coccineum'

GREEN ROOF: REPRESENTATIVE PLANT PALETTE



STREET LIGHT: *Washington Globe*



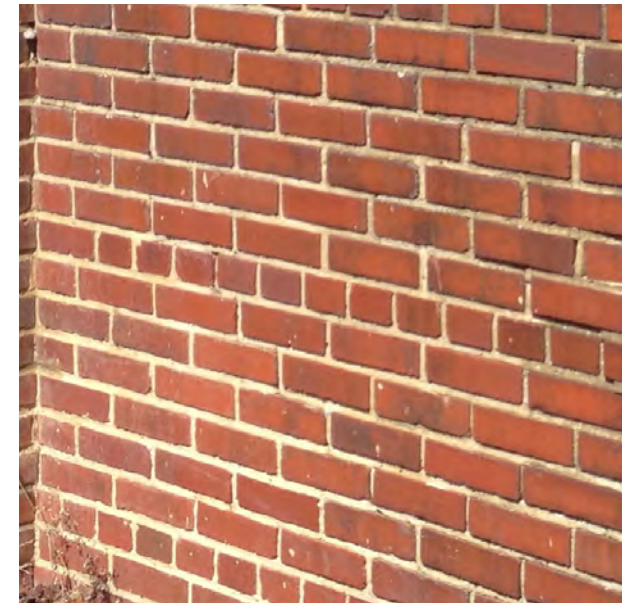
TRASH RECEPTACLE: *Traditional, Black*



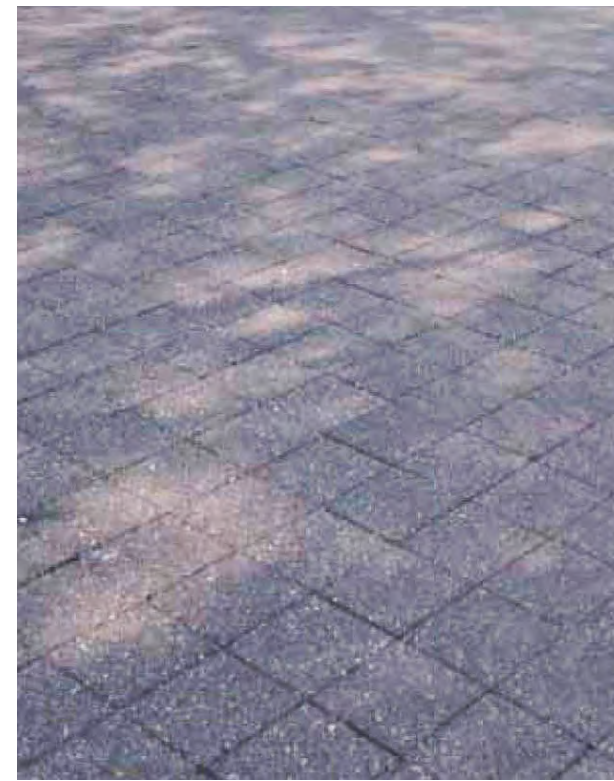
PARKING METER: *Multi-space*



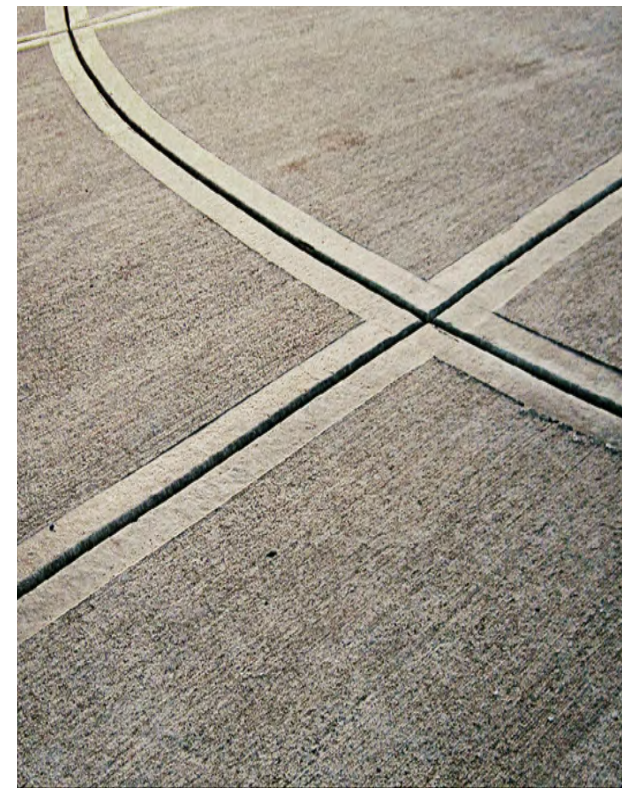
CAST STONE WALL CAPS



RECLAIMED BRICK PLANTER WALLS



DROP-OFF: ASPHALT BLOCK PAVER: *with concrete curbing*



CONCRETE SIDEWALK: *3'x3' Scoring, Hairbroom Finish*

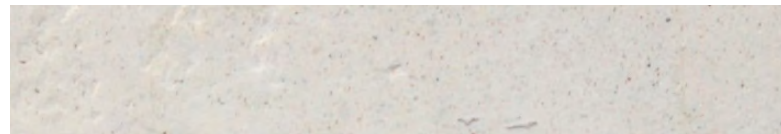


HANDRAIL: *Stainless Steel, with optional inlay panel*

SITE FURNISHINGS AND MATERIALS: I STREET SW AND DROP-OFF



STREET LIGHT: *Washington Globe*



CAST STONE WALL CAPS



SLURRY BRICK PLANTER WALLS



CONCRETE SIDEWALK: 3'x3' Scoring, Hairbroom Finish



TRASH RECEPTACLE: *Wire mesh*



BIKE RACK: *Upright, gray*

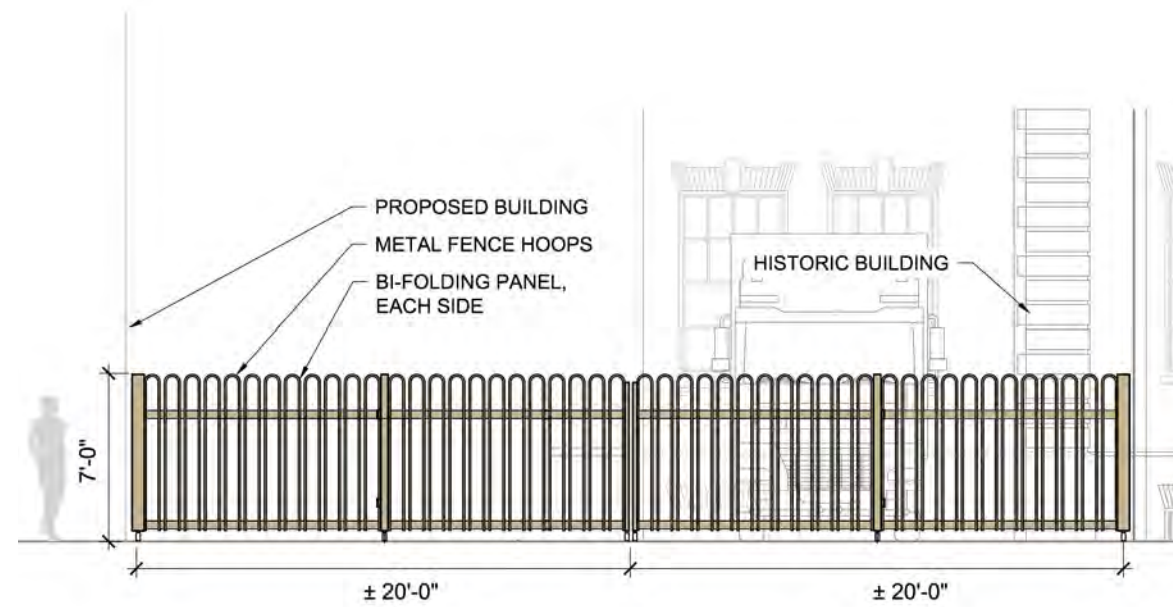
SITE FURNISHINGS AND MATERIALS: FIRST AND H STREETS SW



POWDER COATED ALUMINUM PLANTER WALLS



BIKE RACK: *Upright, gray*



SECURITY FENCE: REPRESENTATIVE ELEVATION

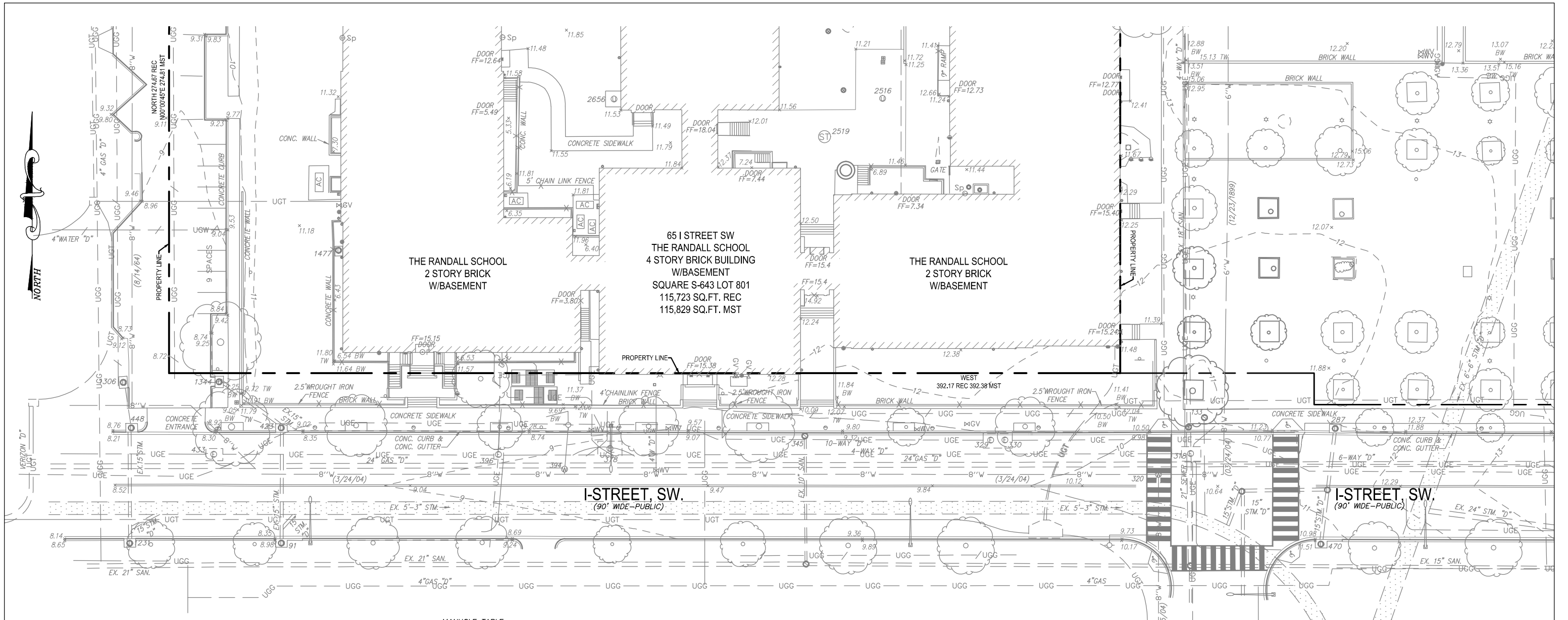


CONCRETE PAVERS, MUSEUM LOADING ZONE



PRECAST CONCRETE PAVER

SITE FURNISHINGS AND MATERIALS: COURTYARD



MANHOLE TABLE

91 STORM MANHOLE TOP=9.04 FILLED W/DEBRIS	423 STORM MANHOLE TOP=8.95 FILLED W/WATER	2251 SEWER MANHOLE TOP=9.90 6" INV=4.59(W) 12" INV=4.19(E)	329 ELECTRIC MANHOLE TOP=9.68 BOTTOM=-1.17	2068 SEWER MANHOLE TOP=11.15 ?" INV=-4.66(N) ?" INV=-4.64(SW)	2386 ELECTRIC MANHOLE TOP=9.38 BOTTOM=6.98
133 SEWER MANHOLE TOP=10.89 ?" INV=-5.85(N) ?" INV=-5.58(S)	433 ELECTRIC MANHOLE TOP=8.57 BOTTOM=1.87	2255 STORM MANHOLE TOP=9.51 FILLED W/DEBRIS	330 ELECTRIC MANHOLE TOP=9.70 BOTTOM=-1.05	2069 SEWER MANHOLE TOP=10.98 21" INV=-1.54(W) ?" INV=-1.54(SW) 24" INV=-1.81(NE)	2387 ELECTRIC MANHOLE TOP=9.60 BOTTOM=7.10
179 TELEPHONE MANHOLE TOP=15.69 BOTTOM=3.94	448 STORM MANHOLE TOP=8.77 FILLED W/WATER	2256 STORM MANHOLE TOP=9.49 FILLED W/DEBRIS	345 SEWER MANHOLE TOP=9.41 ?" INV=-5.07(N) 10" INV=-1.28(W) 10" INV=-5.18(S)	2090 ELECTRIC MANHOLE TOP=11.46 INACCESSIBLE	2512 SEWER MANHOLE TOP=11.57 10" INV=3.35(N) 10" INV=3.45(W) 6" INV=6.21(S)
180 TELEPHONE MANHOLE TOP=15.95 BOTTOM=3.80	470 STORM MANHOLE TOP=11.48 FILLED W/WATER	2257 STORM MANHOLE TOP=9.48 FILLED W/DEBRIS	378 ELECTRIC MANHOLE TOP=9.14 BOTTOM=-0.71	2179 SEWER MANHOLE TOP=11.18 21" INV=-0.12(N) 4" INV=7.07(S) 10" INV=3.22(S)	2516 UTILITY MANHOLE (FUEL) TOP=11.61 TOP OF TANK=8.56 BOTTOM=-1.89
183 TELEPHONE MANHOLE TOP=15.86 BOTTOM=3.82	1231 STORM MANHOLE TOP=8.70 FILLED W/WATER	2261 SEWER MANHOLE TOP=9.11 FILLED W/DEBRIS	394 WATER MANHOLE TOP=9.28 BOTTOM=7.08	2184 WATER MANHOLE TOP=9.01 BOTTOM=6.31	2519 STEAM MANHOLE TOP=11.84 BOTTOM=7.94
261 ELECTRIC MANHOLE TOP=13.99 BOTTOM=4.61	1306 STORM MANHOLE TOP=8.99 FILLED W/WATER	2262 SEWER MANHOLE TOP=9.37 15" INV=3.90(N) 21" INV=0.55(W) 15" INV=5.07(S) 21" INV=0.47(E)	396 ELECTRIC MANHOLE TOP=9.04 BOTTOM=1.16		2656 UTILITY MANHOLE TOP=11.61 BOTTOM=7.1
287 STORM MANHOLE TOP=11.87 FILLED W/DEBRIS	1477 STORM MANHOLE TOP=7.40 BOTTOM=0.50 SUMP PUMP	2268 SEWER MANHOLE TOP=9.52 INACCESSIBLE			
318 ELECTRIC MANHOLE TOP=10.50 BOTTOM=1.52	2067 SEWER MANHOLE TOP=10.97 ?" INV=-1.40(W) 12" INV=3.70(W) ?" INV=-2.68(NE)	2269 WATER MANHOLE TOP=9.29 INACCESSIBLE			
320 WATER MANHOLE TOP=10.32 BOTTOM=7.94	2270 SEWER MANHOLE TOP=9.82 10" INV=1.54(N) 8" INV=2.40(E)				



1" = 40'

1" = 40'

TITLE: EXISTING
CONDITIONS PLAN
SOUTH

NUMBER:

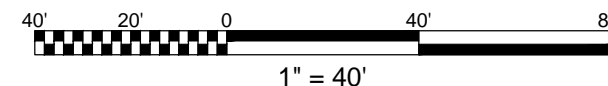
C-01

H-STREET, SW.
(80' WIDE-PUBLIC)

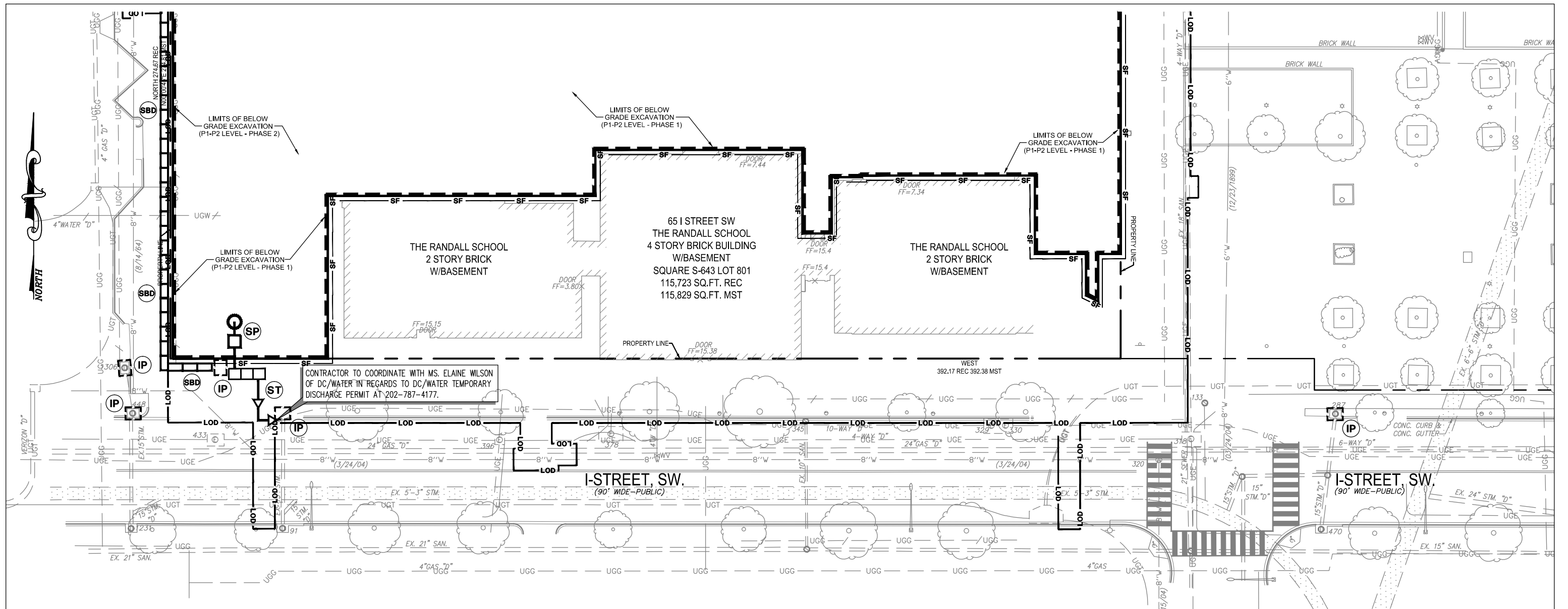
LOT 812 SQUARE 644
N/F UNITED STATES OF
AMERICA

MANHOLE TABLE

91 STORM MANHOLE TOP=9.04 FILLED W/DEBRIS	423 STORM MANHOLE TOP=8.95 FILLED W/WATER	2251 SEWER MANHOLE TOP=9.90 6" INV=4.59(W) 12" INV=4.19(E)	329 ELECTRIC MANHOLE TOP=9.68 BOTTOM=-1.17	2068 SEWER MANHOLE TOP=11.15 ?" INV=-4.66(N) ?" INV=-4.64(SW)	2386 ELECTRIC MANHOLE TOP=9.38 BOTTOM=6.98
133 SEWER MANHOLE TOP=10.89 ?" INV=-5.85(N) ?" INV=-5.58(S)	433 ELECTRIC MANHOLE TOP=8.57 BOTTOM=1.87	2255 STORM MANHOLE TOP=9.51 FILLED W/DEBRIS	330 ELECTRIC MANHOLE TOP=9.70 BOTTOM=-1.05	2069 SEWER MANHOLE TOP=10.98 21" INV=-1.54(W) ?" INV=-1.54(SW) 24" INV=-1.81(NE)	2387 ELECTRIC MANHOLE TOP=9.60 BOTTOM=7.10
179 TELEPHONE MANHOLE TOP=15.69 BOTTOM=3.94	448 STORM MANHOLE TOP=8.77 FILLED W/WATER	2256 STORM MANHOLE TOP=9.49 FILLED W/DEBRIS	345 SEWER MANHOLE TOP=9.41 ?" INV=-5.07(N) 10" INV=-1.28(W) 10" INV=-5.18(S)	2090 ELECTRIC MANHOLE TOP=11.46 INACCESSIBLE	2512 SEWER MANHOLE TOP=11.57 10" INV=3.35(N) 10" INV=3.45(W) 6" INV=6.21(S)
180 TELEPHONE MANHOLE TOP=15.95 BOTTOM=3.80	470 STORM MANHOLE TOP=11.48 FILLED W/WATER	2257 STORM MANHOLE TOP=9.48 FILLED W/DEBRIS	378 ELECTRIC MANHOLE TOP=9.14 BOTTOM=-0.71	2179 SEWER MANHOLE TOP=11.18 21" INV=-0.12(N) 4" INV=7.07(S) 10" INV=3.22(S)	2516 UTILITY MANHOLE (FUEL) TOP=11.61 TOP OF TANK=8.56 BOTTOM=-1.89
183 TELEPHONE MANHOLE TOP=15.86 BOTTOM=3.82	1231 STORM MANHOLE TOP=8.70 FILLED W/WATER	2261 SEWER MANHOLE TOP=9.11 FILLED W/DEBRIS	394 WATER MANHOLE TOP=9.28 BOTTOM=7.08	2184 WATER MANHOLE TOP=9.01 BOTTOM=6.31	2519 STEAM MANHOLE TOP=11.84 BOTTOM=7.94
261 ELECTRIC MANHOLE TOP=13.99 BOTTOM=4.61	1306 STORM MANHOLE TOP=8.99 FILLED W/WATER	2262 SEWER MANHOLE TOP=9.37 15" INV=3.90(N) 21" INV=0.55(W) 15" INV=5.07(S) 21" INV=0.47(E)	396 ELECTRIC MANHOLE TOP=9.04 BOTTOM=1.16		2656 UTILITY MANHOLE TOP=11.61 BOTTOM=7.1
287 STORM MANHOLE TOP=11.87 FILLED W/DEBRIS	1477 STORM MANHOLE TOP=7.40 BOTTOM=0.50 SUMP PUMP	2268 SEWER MANHOLE TOP=9.52 INACCESSIBLE			
318 ELECTRIC MANHOLE TOP=10.50 BOTTOM=1.52	2067 SEWER MANHOLE TOP=10.97 ?" INV=-1.40(W) 12" INV=3.70(W) ?" INV=-2.68(NE)	2269 WATER MANHOLE TOP=9.29 INACCESSIBLE			
320 WATER MANHOLE TOP=10.32 BOTTOM=7.94	2270 SEWER MANHOLE TOP=9.82 10" INV=1.54(N) 8" INV=2.40(E)				



1" = 40'
TITLE: EXISTING CONDITIONS PLAN NORTH
NUMBER: C-02



DUST CONTROL NOTES:

1. THE CONTRACTOR SHALL CONDUCT OPERATIONS AND MAINTAIN THE PROJECT SITE AS TO MINIMIZE THE CREATION AND DISPERSION OF DUST. DUST CONTROL SHALL BE USED THROUGHOUT THE WORK AT THE SITE.
2. THE CONTRACTOR MUST PROVIDE CLEAN WATER, FREE FROM SALT, OIL AND OTHER DELETERIOUS MATERIAL TO BE USED FOR ON-SITE DUST CONTROL.
3. THE CONTRACTOR SHALL SUPPLY WATER SPRAYING EQUIPMENT CAPABLE OF ACCESSING ALL WORK AREAS.
4. THE CONTRACTOR SHALL IMPLEMENT STRICT DUST CONTROL MEASURES DURING ACTIVE CONSTRUCTION PERIODS ON-SITE. THESE CONTROL MEASURES WILL GENERALLY CONSIST OF WATER APPLICATIONS THAT SHALL BE APPLIED A MINIMUM OF ONCE PER DAY DURING DRY WEATHER OR MORE OFTEN AS REQUIRED TO PREVENT DUST EMISSIONS.
5. FOR WATER APPLICATION TO UNDISTURBED SOIL SURFACES, THE CONTRACTOR SHALL:
 - A. APPLY WATER WITH EQUIPMENT CONSISTING OF TANK, SPRAY BAR, PUMP WITH DISCHARGE PRESSURE GAUGE;
 - B. ARRANGE SPRAY BAR HEIGHT, NOZZLE SPACING AND SPRAY PATTERN TO PROVIDE COMPLETE COVERAGE OF GROUND WITH WATER;
 - C. DISPERSE WATER THROUGH NOZZLES ON SPRAY BAR AT 20 PSI (137.8 K PA) MINIMUM. KEEP AREAS DAMP WITHOUT CREATING NUISANCE CONDITIONS SUCH AS PONDING.
6. FOR WATER APPLICATION TO SOIL SURFACES DURING DEMOLITION AND/OR EXCAVATION, THE CONTRACTOR SHALL:
 - A. APPLY WATER WITH EQUIPMENT CONSISTING OF A TANK, PUMP WITH DISCHARGE GAUGE, HOSES AND MIST NOZZLES;
 - B. LOCATE TANK AND SPRAYING EQUIPMENT SO THAT THE ENTIRE EXCAVATION AREA CAN BE MISTED WITHOUT INTERFERING WITH DEMOLITION AND/OR EXCAVATION EQUIPMENT OR OPERATIONS. KEEP AREAS DAMP WITHOUT CREATING NUISANCE CONDITIONS SUCH AS PONDING.
 - C. APPLY WATER SPRAY IN A MANNER TO PREVENT MOVEMENT OF SPRAY BEYOND SITE BOUNDARIES.

CONSTRUCTION AND STABILIZATION SEQUENCE:

1. INSTALL SEDIMENT AND EROSION CONTROL MEASURES INCLUDING STABILIZED TREE PROTECTION, AND SILT FENCE AS INDICATED ON SHEET C-103. SEE SHEET C-503 FOR SEDIMENTATION AND EROSION CONTROL DETAILS.
2. SEDIMENT CONTROL MEASURES SHALL BE INSPECTED AND APPROVED BY THE INSPECTOR PRIOR TO COMMENCING ANY OTHER LAND DISTURBING ACTIVITIES.
3. REMOVE ITEMS AS INDICATED ON DEMOLITION PLAN.
4. INSTALL SITE IMPROVEMENTS AS INDICATED ON CONSTRUCTION DOCUMENTS FOR THE PROPOSED BUILDING.
5. AT THE COMPLETION OF CONSTRUCTION AND AFTER THE INSPECTOR'S APPROVAL, ALL TEMPORARY SEDIMENTATION AND EROSION CONTROL MEASURES SHALL BE REMOVED.

SEDIMENTATION EROSION CONTROL NOTE:

THE APPLICANT MUST NOTIFY THE DEPARTMENT OF HEALTH BY PHONE (202-535-2250) AT LEAST 24 HOURS PRIOR TO THE START OF GRADING ACTIVITY AND WITHIN (2) WEEKS AFTER COMPLETION OF PROJECT TO REQUEST INSPECTION. IF THERE IS NEED TO MAKE CHANGES OR MODIFICATIONS IN THE APPROVED DESIGN, DEPARTMENT OF HEALTH MUST BE NOTIFIED IMMEDIATELY.

SCHEDULE AND HOLD PRE-CONSTRUCTION MEETING WITH THE SEDIMENT CONTROL INSPECTOR 48 HOURS PRIOR TO ANY LAND DISTURBING ACTIVITY. CALL 202-535-2977 FOR APPOINTMENT.

NOTE:

1. THE CONTRACTOR SHALL BE RESPONSIBLE FOR DESIGN OF SHEETING AND SHORING AND SUPPORT OF EXISTING UTILITIES AND ADJACENT STRUCTURES. SHORING, BRACING, AND UNDERPINNING DESIGNED BY THE CONTRACTOR'S STRUCTURAL ENGINEER LICENSED IN THE DISTRICT OF COLUMBIA SHALL BE PROVIDED AS NECESSARY TO ENSURE THEIR SUPPORT.
2. PROVIDE SILT FENCE AT PERIMETER OF EXCAVATION AREA TO REMAIN IN PLACE UNTIL BELOW GRADE EXCAVATION HAS BEGUN UNLESS OTHERWISE APPROVED BY THE INSPECTOR.
3. CONTRACTOR TO PROVIDE ON SITE APPROVED STAMPED AND SIGNED SEDIMENTATION AND EROSION CONTROL DRAWINGS BY DEPARTMENT OF ENVIRONMENT, WATERSHED PROTECTION DIVISION.
4. PROVIDE CHAIN LINK FENCE AT PERIMETER OF SITE.

CONSTRUCTION DATES:

- THE PROPOSED DEMOLITION WORK DUE TO COMMENCE FALL 2013 AND IS ANTICIPATED TO TAKE APPROXIMATELY 24 MONTHS.
- EXACT BEGINNING AND END OF CONSTRUCTION IS TO BE ESTABLISHED BY THE OWNER.

TOTAL AREA OF DISTURBANCE:

TOTAL AREA OF DISTURBANCE: 137,914 SQUARE FEET OR 3.1661 AC

TOTAL VOLUME OF CUT OF BELOW GRADE EXCAVATION:

(PHASE 1)
 TOTAL AREA OF EXCAVATION: 56,647 SF / 1.30 AC
 VOLUME OF CUT: 56,647 SQ.FT. (AREA) X 14 FEET (DEPTH)
 27
 VOLUME OF CUT: 29,373 cy +/-

TOTAL VOLUME OF CUT OF BELOW GRADE EXCAVATION:

(PHASE 2)
 TOTAL AREA OF EXCAVATION: 35,614 SF / 0.8176 AC
 VOLUME OF CUT: 35,614 SQ.FT. (AREA) X 14 FEET (DEPTH)
 27
 VOLUME OF CUT: 18,467 cy +/-

TOTAL VOLUME OF CUT /FILL FOR UTILITIES:

TOTAL AREA OF EXCAVATION: 2,888 SF
 VOLUME OF CUT: 2,888 SQ.FT. (AREA) X 7 FEET (DEPTH)
 27
 VOLUME OF CUT AND FILL: 749 cy +/-

SEDIMENT CONTROL APPROVAL:

PLAN NUMBER:
 THIS APPROVAL IS FOR GRADING AND SEDIMENT CONTROL ONLY. PERMITTEE/ CONTRACTOR IS REQUIRED TO CONSTRUCT DESIGN FEATURE SHOWN HEREON. HE SHALL NOTIFY THIS OFFICE AT NUMBER LISTED BELOW AT LEAST 24 HOURS BEFORE START OF GRADING ACTIVITY, AND WITHIN TWO WEEKS AFTER COMPLETION OF PROJECT FOR FINAL INSPECTION.

DATE _____

EROSION AND SEDIMENT CONTROL BRANCH

FOR FURTHER INFORMATION, PLEASE CALL:
 GOVERNMENT OF THE DISTRICT OF COLUMBIA
 DISTRICT DEPARTMENT OF ENVIRONMENT
 WATERSHED PROTECTION DIVISION

1200 1ST-STREET, NE
 WASHINGTON, D.C.
 TEL NO. (202) 535-2240
 FAX NO. (202) 535-1364

LEGEND

LEGEND	PROPOSED
TEMP CONSTRUCTION ENTRANCE	
WASH RACK	
SILT FENCE	
INLET PROTECTION	
APPROXIMATE LIMIT OF BELOW GRADE EXCAVATION	
APPROXIMATE LIMIT OF DISTURBANCE	
SEDIMENT TANK	
SUMP PUMP	
TREE PROTECTION	
STRAW BALE DIKE	

THIS SHEET IS TO BE USED FOR SEDIMENTATION AND EROSION CONTROL PURPOSES ONLY !!

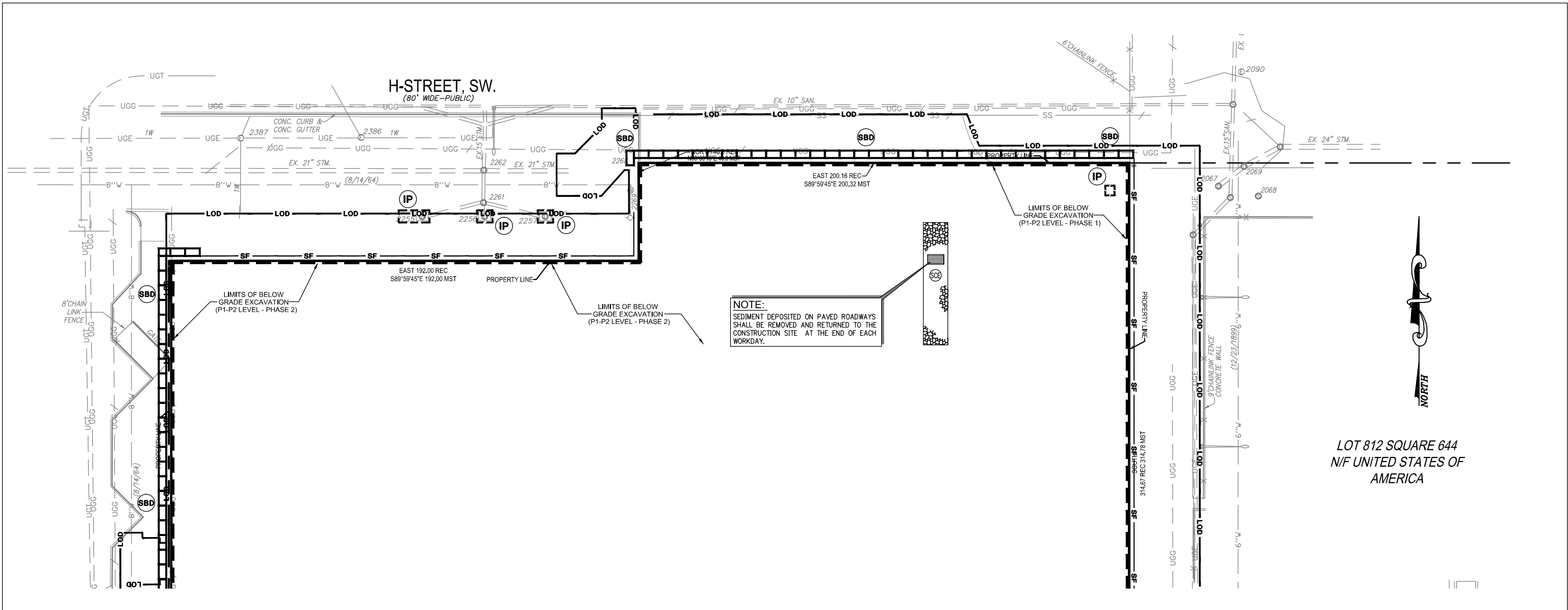


1" = 40'

TITLE: EROSION AND SEDIMENTATION CONTROL PLAN SOUTH

NUMBER:

C-03



NOTE:
 SEDIMENT DEPOSITED ON PAVED ROADWAYS SHALL BE REMOVED AND RETURNED TO THE CONSTRUCTION SITE AT THE END OF EACH WORKDAY.

LOT 812 SQUARE 644
 N/F UNITED STATES OF AMERICA

DUST CONTROL NOTES:

1. THE CONTRACTOR SHALL CONDUCT OPERATIONS AND MAINTAIN THE PROJECT SITE AS TO MINIMIZE THE CREATION AND DISPERSION OF DUST. DUST CONTROL SHALL BE USED THROUGHOUT THE WORK AT THE SITE.
2. THE CONTRACTOR MUST PROVIDE CLEAN WATER, FREE FROM SALT, OIL AND OTHER DELETERIOUS MATERIAL TO BE USED FOR ON-SITE DUST CONTROL.
3. THE CONTRACTOR SHALL SUPPLY WATER SPRAYING EQUIPMENT CAPABLE OF ACCESSING ALL WORK AREAS.
4. THE CONTRACTOR SHALL IMPLEMENT STRICT DUST CONTROL MEASURES DURING ACTIVE CONSTRUCTION PERIODS ON-SITE. THESE CONTROL MEASURES WILL GENERALLY CONSIST OF WATER APPLICATIONS THAT SHALL BE APPLIED A MINIMUM OF ONCE PER DAY DURING DRY WEATHER OR MORE OFTEN AS REQUIRED TO PREVENT DUST EMISSIONS.
5. FOR WATER APPLICATION TO UNDISTURBED SOIL SURFACES, THE CONTRACTOR SHALL:
 - A. APPLY WATER WITH EQUIPMENT CONSISTING OF TANK, SPRAY BAR, PUMP WITH DISCHARGE PRESSURE GAUGE;
 - B. ARRANGE SPRAY BAR HEIGHT, NOZZLE SPACING AND SPRAY PATTERN TO PROVIDE COMPLETE COVERAGE OF GROUND WITH WATER;
 - C. DISPERSE WATER THROUGH NOZZLES ON SPRAY BAR AT 20 PSI (137.8 k Pa) MINIMUM. KEEP AREAS DAMP WITHOUT CREATING NUISANCE CONDITIONS SUCH AS PONDING.
6. FOR WATER APPLICATION TO SOIL SURFACES DURING DEMOLITION AND/OR EXCAVATION, THE CONTRACTOR SHALL:
 - A. APPLY WATER WITH EQUIPMENT CONSISTING OF A TANK, PUMP WITH DISCHARGE GAUGE, HOSES AND MIST NOZZLES;
 - B. LOCATE TANK AND SPRAYING EQUIPMENT SO THAT THE ENTIRE EXCAVATION AREA CAN BE MISTED WITHOUT INTERFERING WITH DEMOLITION AND/OR EXCAVATION EQUIPMENT OR OPERATIONS. KEEP AREAS DAMP WITHOUT CREATING NUISANCE CONDITIONS SUCH AS PONDING.
 - C. APPLY WATER SPRAY IN A MANNER TO PREVENT MOVEMENT OF SPRAY BEYOND SITE BOUNDARIES.

CONSTRUCTION AND STABILIZATION SEQUENCE:

1. INSTALL SEDIMENT AND EROSION CONTROL MEASURES INCLUDING STABILIZED TREE PROTECTION, AND SILT FENCE AS INDICATED ON SHEET C-103. SEE SHEET C-503 FOR SEDIMENTATION AND EROSION CONTROL DETAILS.
2. SEDIMENT CONTROL MEASURES SHALL BE INSPECTED AND APPROVED BY THE INSPECTOR PRIOR TO COMMENCING ANY OTHER LAND DISTURBING ACTIVITIES.
3. REMOVE ITEMS AS INDICATED ON DEMOLITION PLAN.
4. INSTALL SITE IMPROVEMENTS AS INDICATED ON CONSTRUCTION DOCUMENTS FOR THE PROPOSED BUILDING.
5. AT THE COMPLETION OF CONSTRUCTION AND AFTER THE INSPECTOR'S APPROVAL, ALL TEMPORARY SEDIMENTATION AND EROSION CONTROL MEASURES SHALL BE REMOVED.

SEDIMENTATION EROSION CONTROL NOTE:

THE APPLICANT MUST NOTIFY THE DEPARTMENT OF HEALTH BY PHONE (202-535-2250) AT LEAST 24 HOURS PRIOR TO THE START OF GRADING ACTIVITY AND WITHIN (2) WEEKS AFTER COMPLETION OF PROJECT TO REQUEST INSPECTION. IF THERE IS NEED TO MAKE CHANGES OR MODIFICATIONS IN THE APPROVED DESIGN, DEPARTMENT OF HEALTH MUST BE NOTIFIED IMMEDIATELY.

SCHEDULE AND HOLD PRE-CONSTRUCTION MEETING WITH THE SEDIMENT CONTROL INSPECTOR 48 HOURS PRIOR TO ANY LAND DISTURBING ACTIVITY. CALL 202-535-2977 FOR APPOINTMENT.

NOTE:

1. THE CONTRACTOR SHALL BE RESPONSIBLE FOR DESIGN OF SHEETING AND SHORING AND SUPPORT OF EXISTING UTILITIES AND ADJACENT STRUCTURES. SHORING, BRACING, AND UNDERPINNING DESIGNED BY THE CONTRACTOR'S STRUCTURAL ENGINEER LICENSED IN THE DISTRICT OF COLUMBIA SHALL BE PROVIDED AS NECESSARY TO ENSURE THEIR SUPPORT.
2. PROVIDE SILT FENCE AT PERIMETER OF EXCAVATION AREA TO REMAIN IN PLACE UNTIL BELOW GRADE EXCAVATION HAS BEGUN UNLESS OTHERWISE APPROVED BY THE INSPECTOR.
3. CONTRACTOR TO PROVIDE ON SITE APPROVED STAMPED AND SIGNED SEDIMENTATION AND EROSION CONTROL DRAWINGS BY DEPARTMENT OF ENVIRONMENT, WATERSHED PROTECTION DIVISION.
4. PROVIDE CHAIN LINK FENCE AT PERIMETER OF SITE.

CONSTRUCTION DATES:

- THE PROPOSED DEMOLITION WORK DUE TO COMMENCE FALL 2013 AND IS ANTICIPATED TO TAKE APPROXIMATELY 24 MONTHS.
- EXACT BEGINNING AND END OF CONSTRUCTION IS TO BE ESTABLISHED BY THE OWNER.

TOTAL AREA OF DISTURBANCE:

TOTAL AREA OF DISTURBANCE: 137,914 SQUARE FEET OR 3.1661 AC

TOTAL VOLUME OF CUT OF BELOW GRADE EXCAVATION: (PHASE 1)

TOTAL AREA OF EXCAVATION: 56,647 SF / 1.30 AC
 VOLUME OF CUT: 56,647 SQ.FT. (AREA) X 14 FEET (DEPTH)
 27
 VOLUME OF CUT: 29,373 cy +/-

TOTAL VOLUME OF CUT OF BELOW GRADE EXCAVATION: (PHASE 2)

TOTAL AREA OF EXCAVATION: 35,614 SF / 0.8176 AC
 VOLUME OF CUT: 35,614 SQ.FT. (AREA) X 14 FEET (DEPTH)
 27
 VOLUME OF CUT: 18,467 cy +/-

TOTAL VOLUME OF CUT /FILL FOR UTILITIES:

TOTAL AREA OF EXCAVATION: 2,888 SF
 VOLUME OF CUT: 2,888 SQ.FT. (AREA) X 7 FEET (DEPTH)
 27
 VOLUME OF CUT AND FILL: 749 cy +/-

SEDIMENT CONTROL APPROVAL:

PLAN NUMBER:
 THIS APPROVAL IS FOR GRADING AND SEDIMENT CONTROL ONLY. PERMITTEE/ CONTRACTOR IS REQUIRED TO CONSTRUCT DESIGN FEATURE SHOWN HEREON. HE SHALL NOTIFY THIS OFFICE AT NUMBER LISTED BELOW AT LEAST 24 HOURS BEFORE START OF GRADING ACTIVITY, AND WITHIN TWO WEEKS AFTER COMPLETION OF PROJECT FOR FINAL INSPECTION.

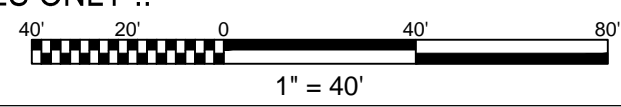
DATE _____

EROSION AND SEDIMENT CONTROL BRANCH

FOR FURTHER INFORMATION, PLEASE CALL:
 GOVERNMENT OF THE DISTRICT OF COLUMBIA
 DISTRICT DEPARTMENT OF ENVIRONMENT
 WATERSHED PROTECTION DIVISION
 1200 1ST-STREET, NE
 WASHINGTON, D.C.
 TEL. NO. (202) 535-2240
 FAX NO. (202) 535-1364

THIS SHEET IS TO BE USED FOR SEDIMENTATION AND EROSION CONTROL PURPOSES ONLY !!

LEGEND	
TEMP CONSTRUCTION ENTRANCE	
WASH RACK	
SILT FENCE	
INLET PROTECTION	
APPROXIMATE LIMIT OF BELOW GRADE EXCAVATION	
APPROXIMATE LIMIT OF DISTURBANCE	
SEDIMENT TANK	
SUMP PUMP	
TREE PROTECTION	
STRAW BALE DIKE	



1" = 40'

TITLE: EROSION AND SEDIMENTATION CONTROL PLAN NORTH

NUMBER: C-04