



SOUTHEAST CORNER VIEW



NORTHWEST CORNER VIEW



VIEW FROM RANDALL POOL



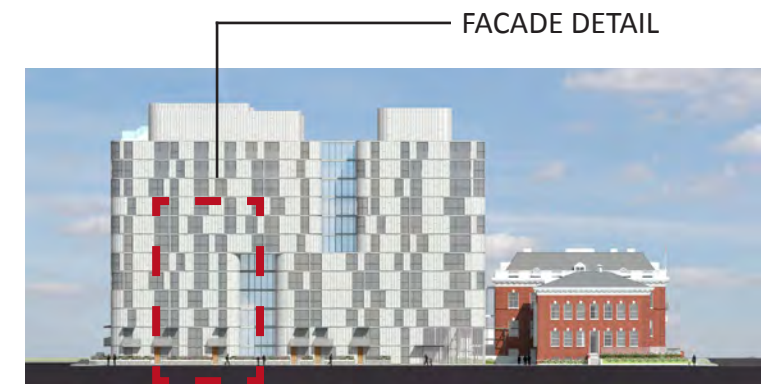
WEST COURTYARD ENTRANCE VIEW



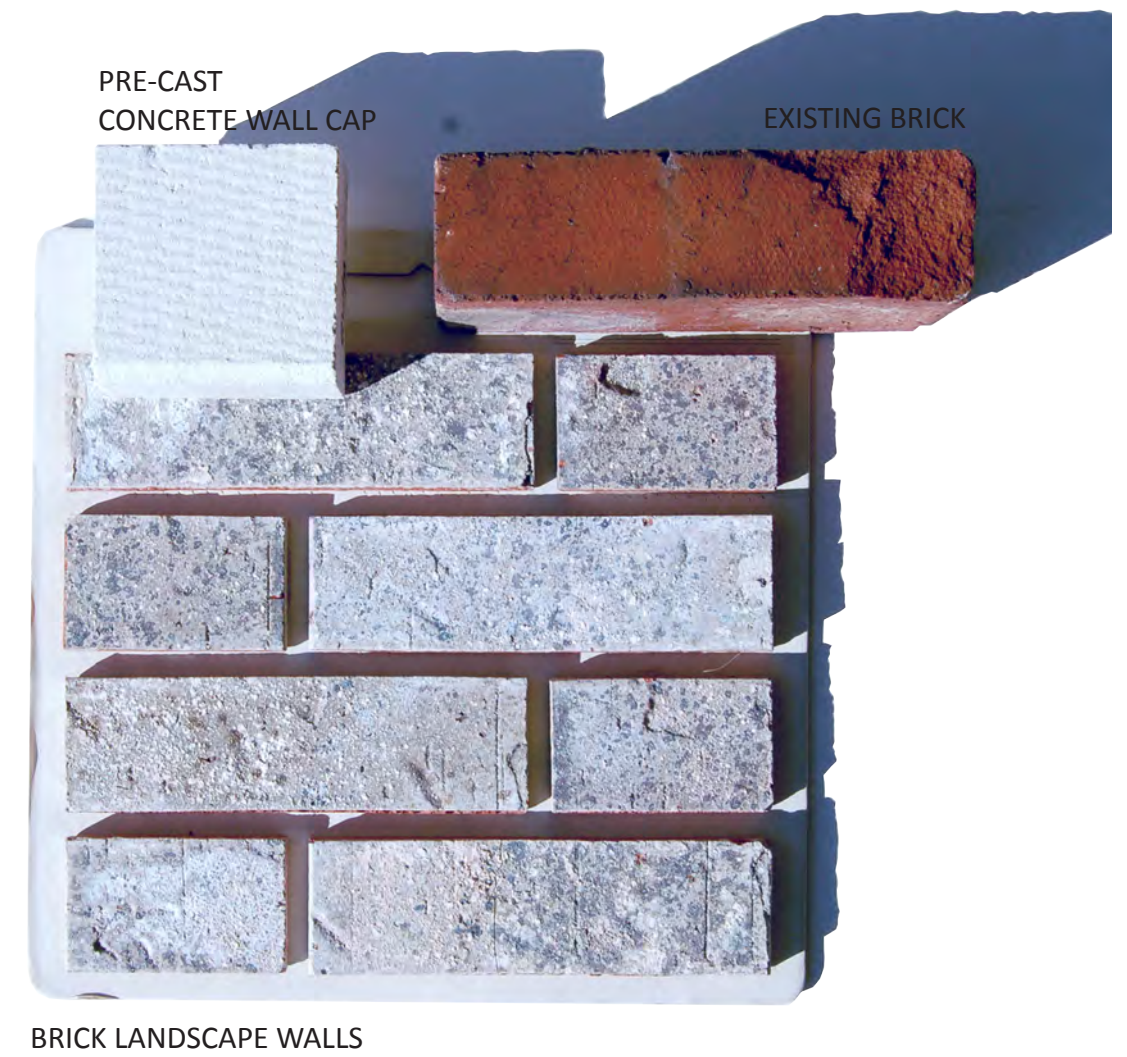
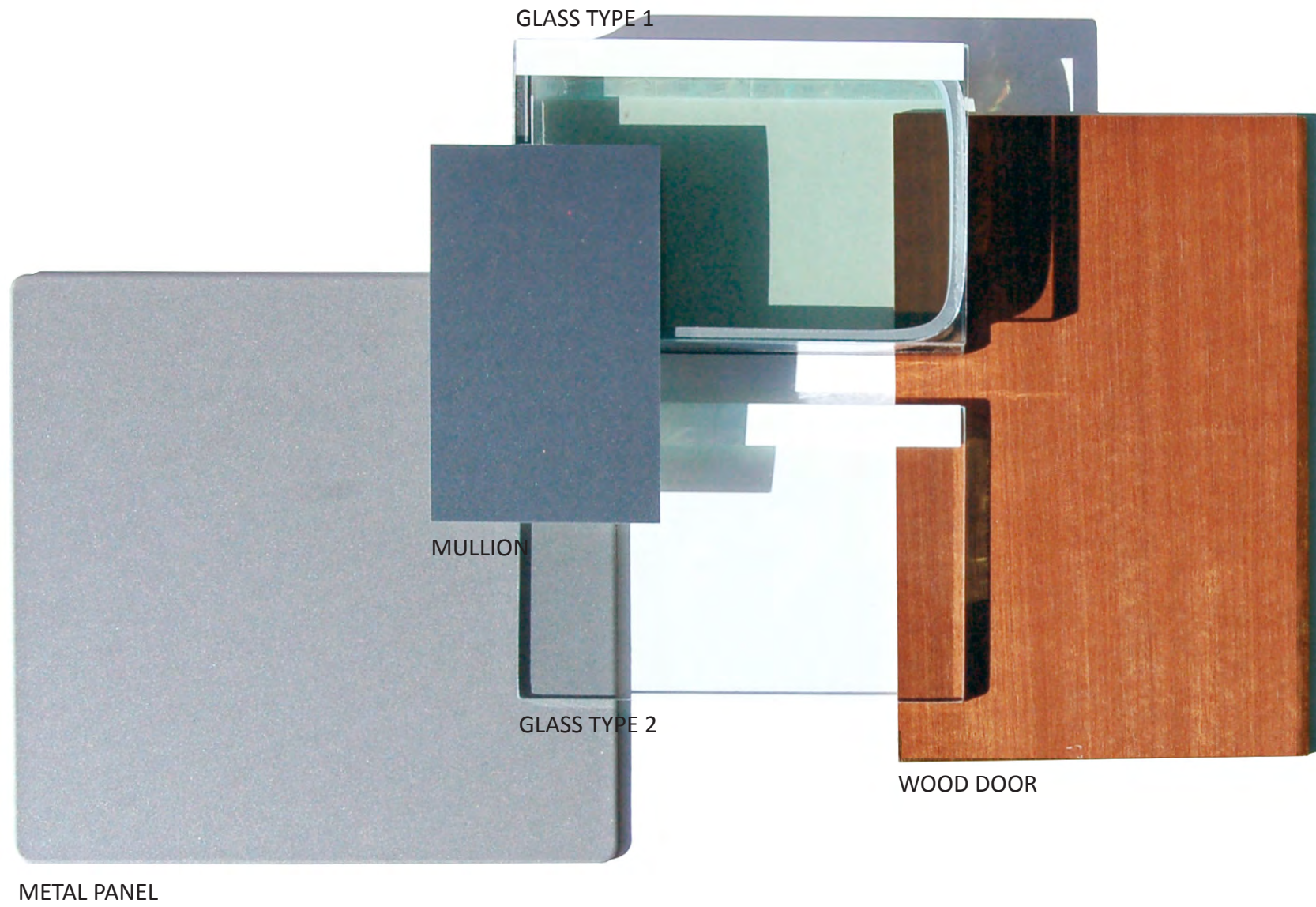
WEST COURTYARD ENTRANCE VIEW



VIEW LOOKING WEST IN COURTYARD



TYPICAL RESIDENTIAL BUILDING MATERIALS



TYPICAL RESIDENTIAL MATERIALS PALETTE



WEST COURTYARD ENTRANCE VIEW



WOOD PANEL

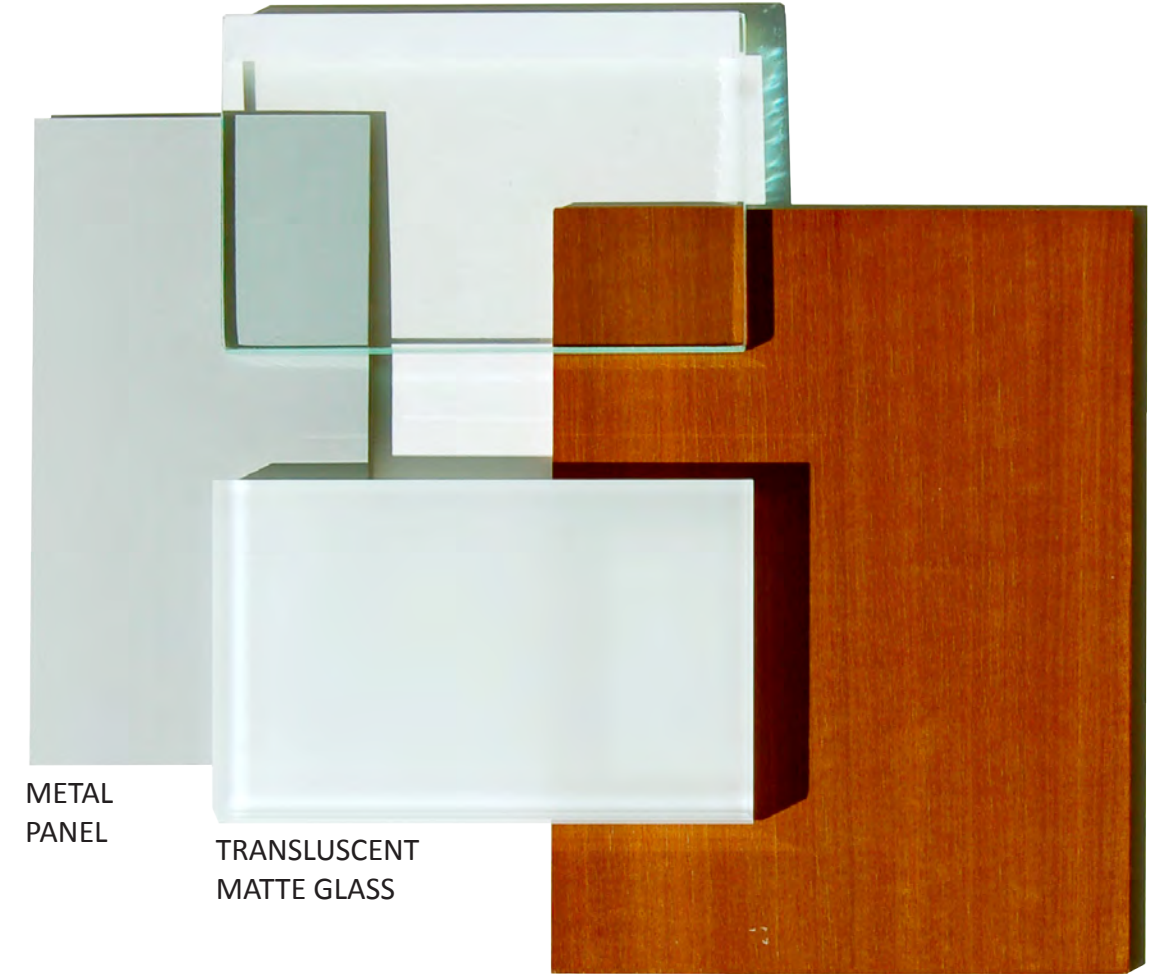
TRANSLUCENT
MATTE GLASS

CLEAR GLASS RAILING

CLEAR GLASS

METAL PANEL

CLEAR GLASS GUARDRAIL



METAL
PANEL

TRANSLUCENT
MATTE GLASS

WOOD

MUSEUM ADDITION MATERIALS PALETTE



MUSEE DU QUAI BRANLY, PARIS



CITY CENTER, DC



THE STANDARD HOTEL ON THE HIGHLINE, NYC





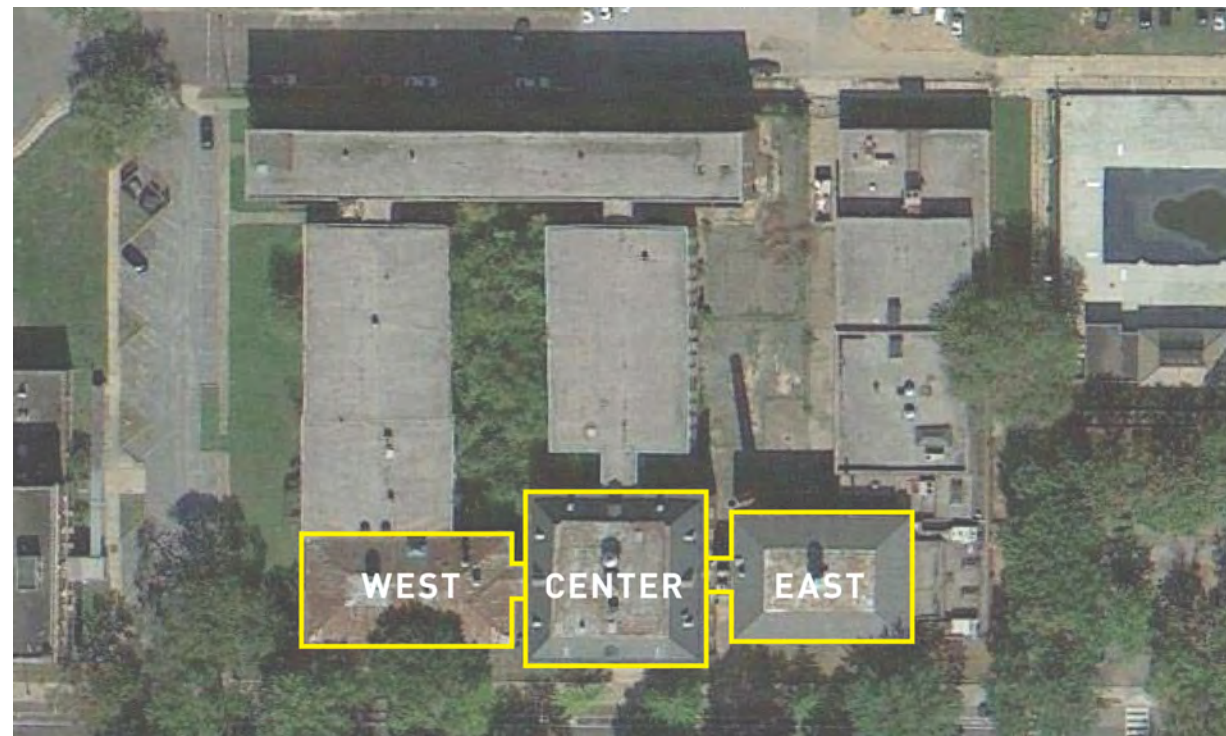
RITZ CARLTON, DC

PROJECT PRECEDENTS

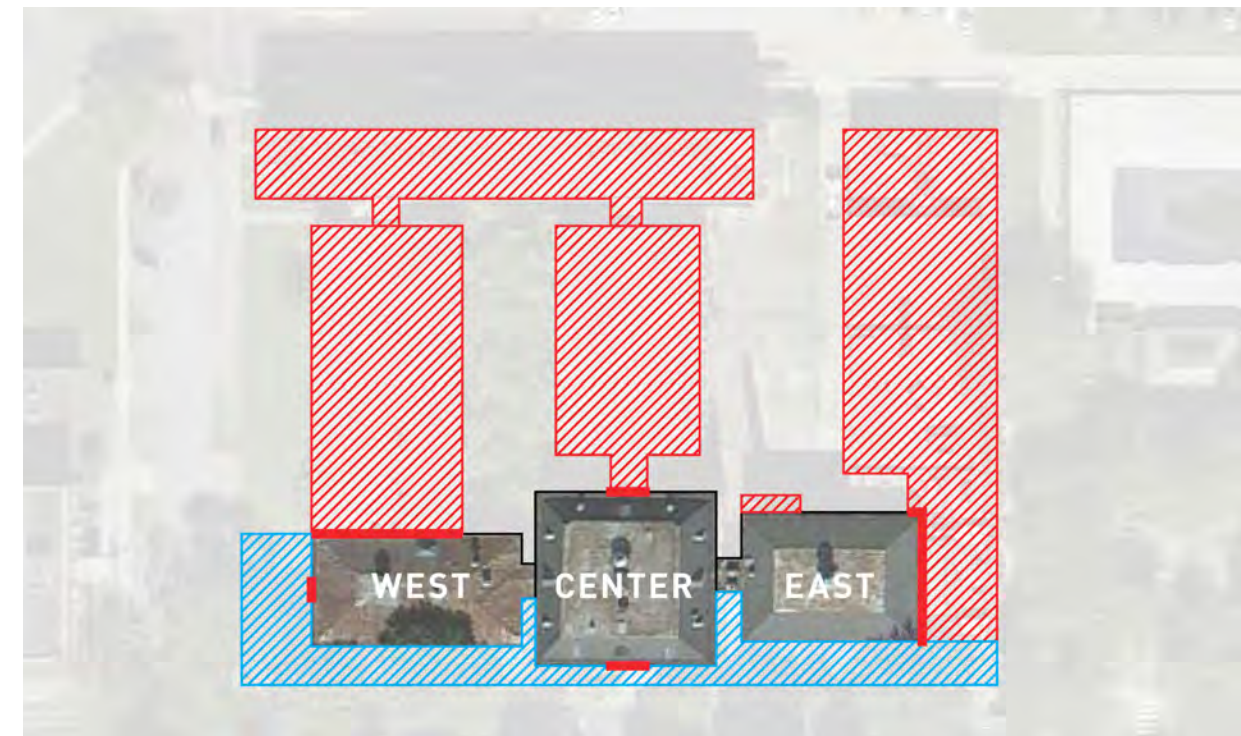


EXHIBIT FROM THE HISTORIC REHABILITATION TREATMENT REPORT PREPARED BY EHT TRACERIES DATED JULY 2011

-  DEMOLITION
-  MODIFICATION

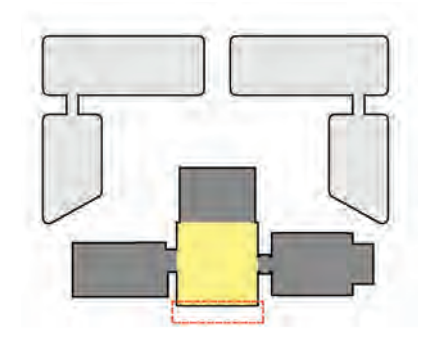


RETAINED HERITAGE BUILDINGS



PROPOSED DEMOLITION AND FACADE MODIFICATION LOCATIONS

HISTORICAL BUILDINGS TO BE RETAINED

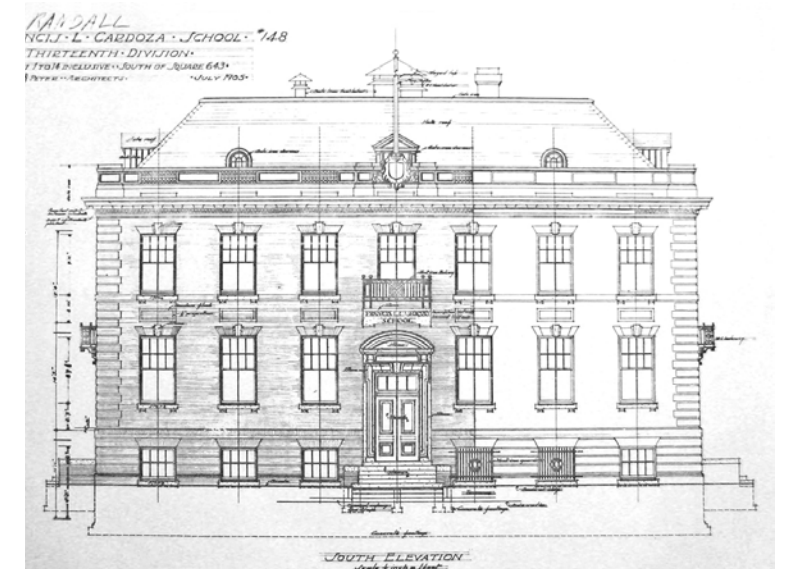


PROPOSED SOUTH ELEVATION

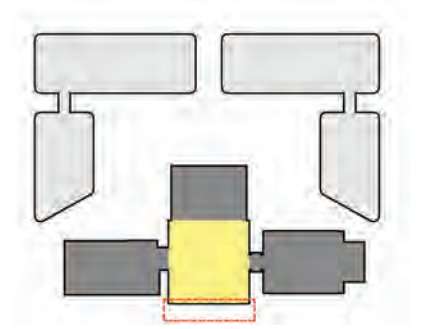
CENTRAL BUILDING -SOUTH ELEVATION (PROPOSED)



CENTRAL BUILDING - SOUTH ELEVATION (EXISTING CONDITIONS)

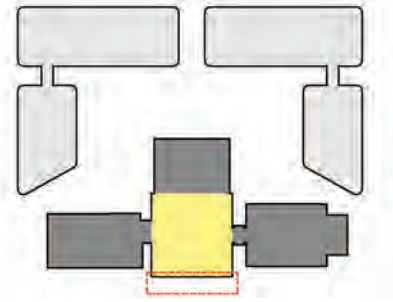


CENTRAL BUILDING SOUTH ELEVATION - ORIGINAL DRAWING (1905)



PROPOSED ENTRANCE RAMPS AT MUSEUM

SOUTHEAST CORNER VIEW OF MUSEUM ENTRANCE

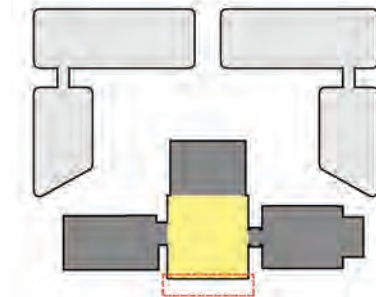


CENTRAL BUILDING PHOTOGRAPH (1908)- ROLLED CURB

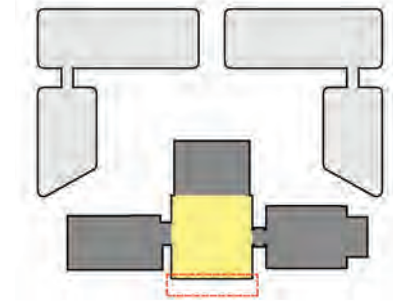


PHOTOGRAPH FROM 1960- SUMMER SCHOOL ARCHIVES

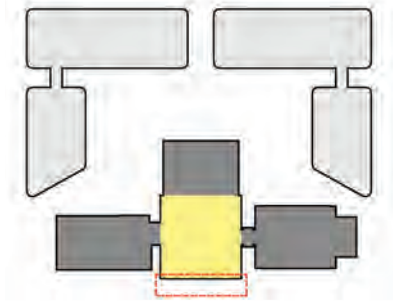
LANDSCAPE TREATMENT AT HISTORIC BUILDINGS



CENTRAL BUILDING - SOUTH MUSEUM ENTRANCE DETAIL



RESTORATION OF BALUSTRADE

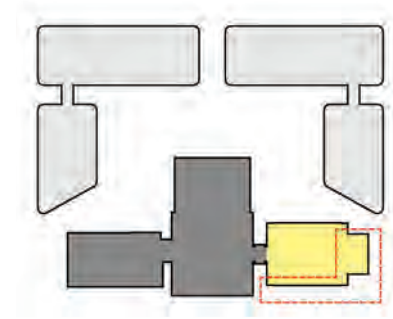


EXISTING ENTRANCE SECTION

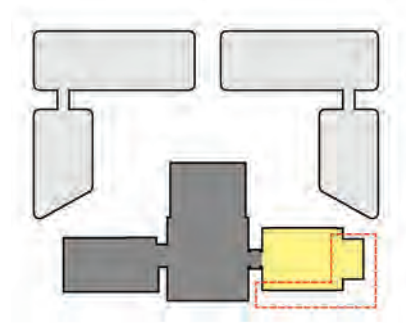


PROPOSED ENTRANCE SECTION

CENTRAL BUILDING - MUSEUM ENTRANCE SECTION



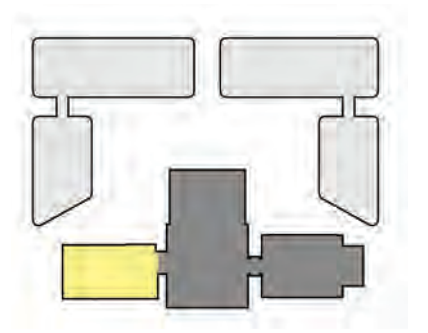
EAST WING - RESTAURANT AS THEATER



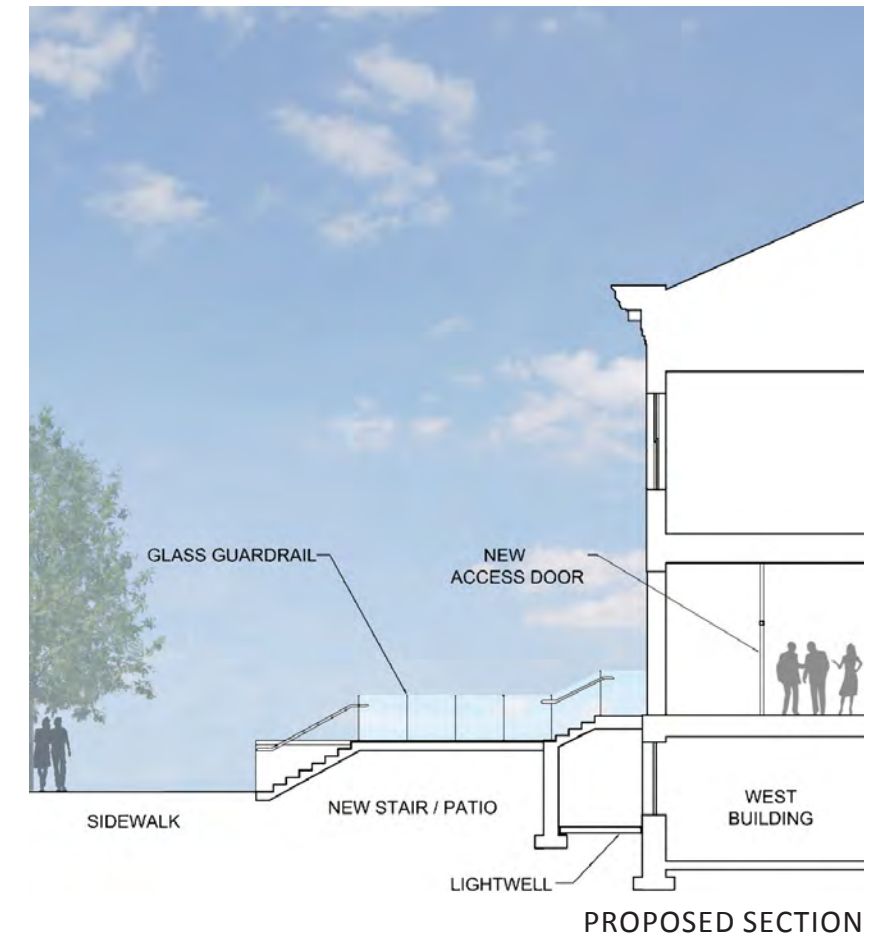
RESTAURANT AT NIGHT



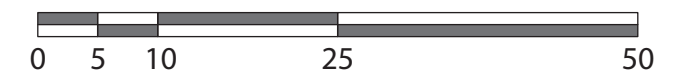
SOUTH ELEVATION



WEST ELEVATION AT TERRACE



PROPOSED SECTION



WEST WING- SOUTH AND WEST ELEVATIONS