



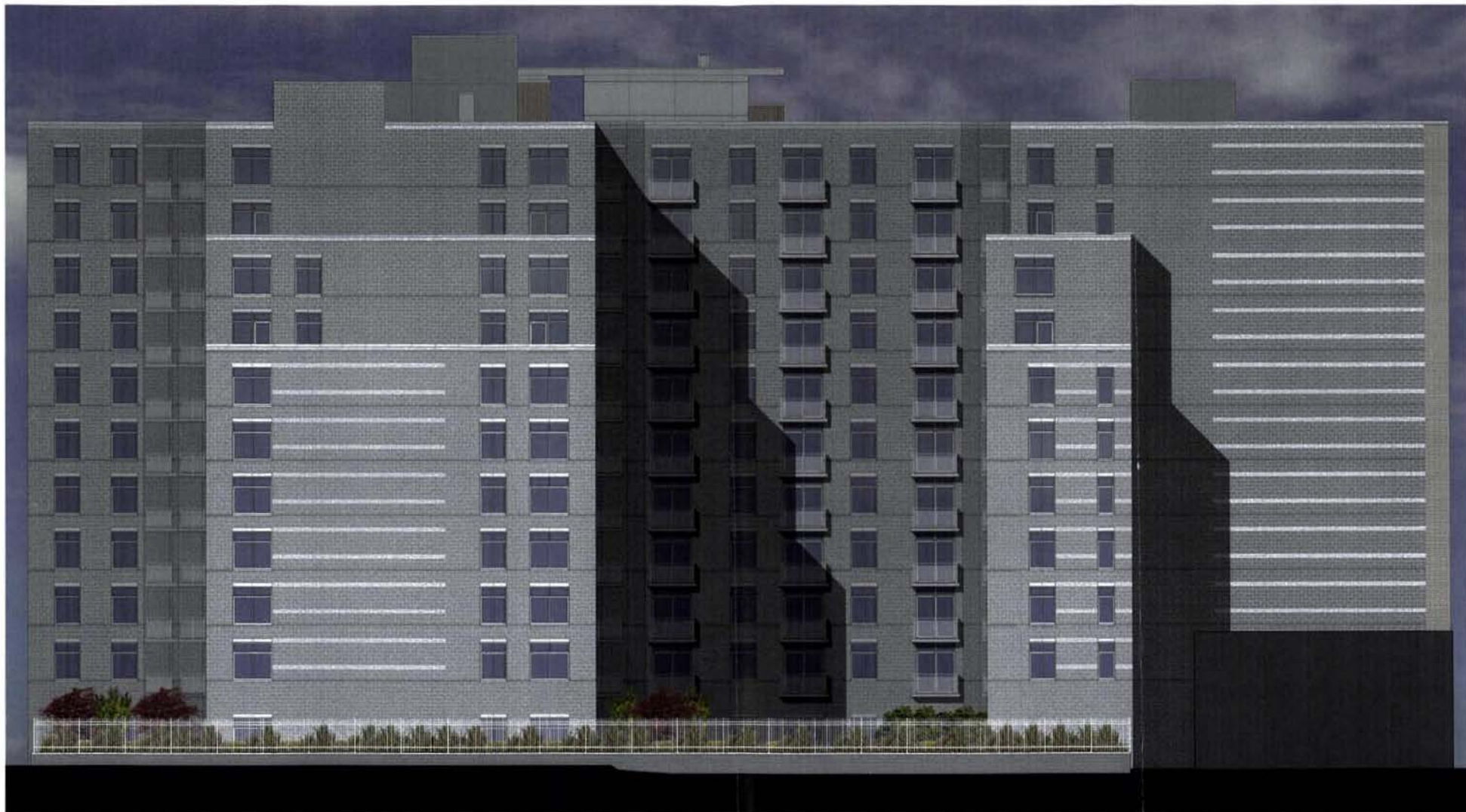
WEST FACADE



1325 South Capitol Street SW
Supplemental Zoning Submittal
03/07/17



ZONING COMMISSION
District of Columbia
CASE NO.06-41
EXHIBIT NO.35D



WEST ELEVATION

WDC
1325 South Capitol Street SW
Supplemental Zoning Submittal
Scale: 1/16" = 1'-0"
03/07/07

CAMDEN